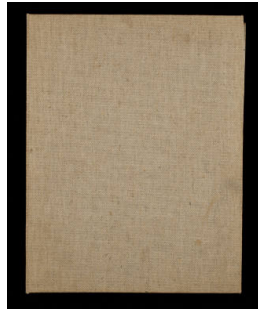


Basic Report



Title: The Connecticut Ballroom: Album à Dessin, Untitled
[Sketchbook #15, cover]
Date: 1975 - 1981
Primary Maker: H. C. (Horace Clifford) Westermann
Medium: Pencil



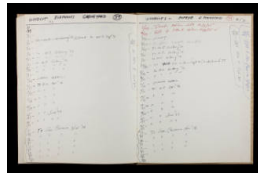
Title: The Connecticut Ballroom: Album à Dessin [Sketchbook #15]
Date: 1975 - 1981
Primary Maker: H. C. (Horace Clifford) Westermann
Medium: Pencil, pen and ink, marking pen, and collage on wove paper



Title: The Connecticut Ballroom: Album à Dessin, Untitled
[Sketchbook #15, leaf 29]
Date: 1975 - 1981
Primary Maker: H. C. (Horace Clifford) Westermann
Medium: Black ink



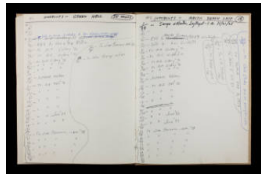
Title: The Connecticut Ballroom: Album à Dessin, Untitled
[Sketchbook #15, cover]
Date: 1975 - 1981
Primary Maker: H. C. (Horace Clifford) Westermann
Medium: Paper



Title: The Connecticut Ballroom: Album à Dessin, Untitled
[Sketchbook #15, leaf 30]
Date: 1975 - 1981
Primary Maker: H. C. (Horace Clifford) Westermann
Medium: Black, blue and red ink



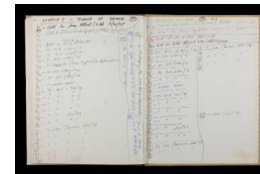
Title: The Connecticut Ballroom: Album à Dessin, Untitled
[Sketchbook #15, loose sheet inbetween cover and leaf 1]
Date: 1975 - 1981
Primary Maker: H. C. (Horace Clifford) Westermann
Medium: Pencil [sheet is example of paper used for woodcuts]



Title: The Connecticut Ballroom: Album à Dessin, Untitled
[Sketchbook #15, leaf 31]
Date: 1975 - 1981
Primary Maker: H. C. (Horace Clifford) Westermann
Medium: Black ink



Title: The Connecticut Ballroom: Album à Dessin, Untitled
[Sketchbook #15, leaf 5]
Date: 1975 - 1981
Primary Maker: H. C. (Horace Clifford) Westermann



Title: The Connecticut Ballroom: Album à Dessin, Untitled
[Sketchbook #15, back cover]
Date: 1975 - 1981
Primary Maker: H. C. (Horace Clifford) Westermann
Medium: Black ink



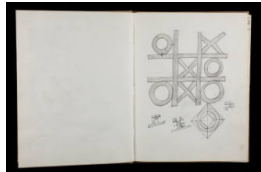
Title: The Connecticut Ballroom: Album à Dessin, Untitled
[Sketchbook #15, leaf 6]
Date: 1975 - 1981
Primary Maker: H. C. (Horace Clifford) Westermann
Medium: Pencil and black ink



Title: The Connecticut Ballroom: Album à Dessin, Untitled
[Sketchbook #15, leaf 7]
Date: 1975 - 1981
Primary Maker: H. C. (Horace Clifford) Westermann
Medium: Pencil



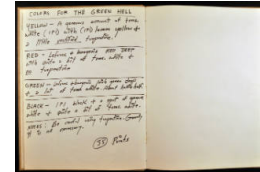
Title: The Connecticut Ballroom: Album à Dessin, Untitled
[Sketchbook #15, leaf 8]
Date: 1975 - 1981
Primary Maker: H. C. (Horace Clifford) Westermann



Title: The Connecticut Ballroom: Album à Dessin, Untitled
[Sketchbook #15, leaf 9]
Date: 1975 - 1981
Primary Maker: H. C. (Horace Clifford) Westermann
Medium: Pencil



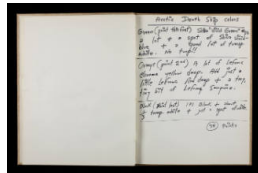
Title: The Connecticut Ballroom: Album à Dessin, Untitled
[Sketchbook #15, leaf 11]
Date: 1975 - 1981
Primary Maker: H. C. (Horace Clifford) Westermann
Medium: Pencil



Title: The Connecticut Ballroom: Album à Dessin, Untitled
[Sketchbook #15, cover]
Date: 1975 - 1981
Primary Maker: H. C. (Horace Clifford) Westermann



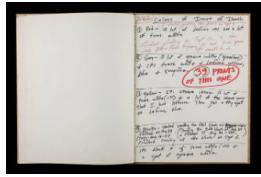
Title: The Connecticut Ballroom: Album à Dessin, Untitled
[Sketchbook #15, leaf 12]
Date: 1975 - 1981
Primary Maker: H. C. (Horace Clifford) Westermann
Medium: Pencil



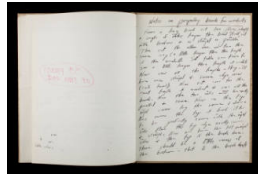
Title: The Connecticut Ballroom: Album à Dessin, Untitled
[Sketchbook #15, leaf 13]
Date: 1975 - 1981
Primary Maker: H. C. (Horace Clifford) Westermann
Medium: Black marker



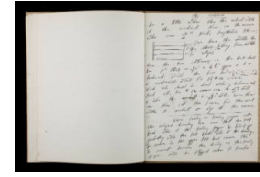
Title: The Connecticut Ballroom: Album à Dessin, Untitled
[Sketchbook #15, leaf 14]
Date: 1975 - 1981
Primary Maker: H. C. (Horace Clifford) Westermann
Medium: Pencil



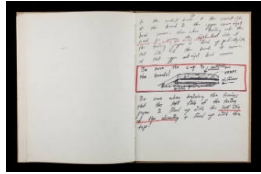
Title: The Connecticut
Ballroom: Album à
Dessin, Untitled
[Sketchbook #15, leaf 16]
Date: 1975 - 1981
Primary Maker: H. C. (Horace
Clifford) Westermann
Medium: Black and red marker



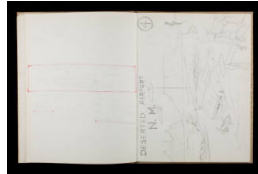
Title: The Connecticut
Ballroom: Album à
Dessin, Untitled
[Sketchbook #15, leaf 17]
Date: 1975 - 1981
Primary Maker: H. C. (Horace
Clifford) Westermann
Medium: Black ink



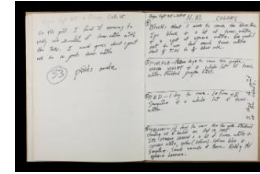
Title: The Connecticut
Ballroom: Album à
Dessin, Untitled
[Sketchbook #15, leaf 18]
Date: 1975 - 1981
Primary Maker: H. C. (Horace
Clifford) Westermann
Medium: Black ink



Title: The Connecticut
Ballroom: Album à
Dessin, Untitled
[Sketchbook #15, leaf 19]
Date: 1975 - 1981
Primary Maker: H. C. (Horace
Clifford) Westermann
Medium: Black and red ink



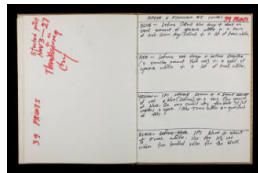
Title: The Connecticut
Ballroom: Album à
Dessin, Untitled
[Sketchbook #15, leaf 20]
Date: 1975 - 1981
Primary Maker: H. C. (Horace
Clifford) Westermann
Medium: Pencil and ink



Title: The Connecticut
Ballroom: Album à
Dessin, Untitled
[Sketchbook #15, leaf 21]
Date: 1975 - 1981
Primary Maker: H. C. (Horace
Clifford) Westermann
Medium: Black and red ink



Title: The Connecticut
Ballroom: Album à
Dessin, Untitled
[Sketchbook #15, leaf 22]
Date: 1975 - 1981
Primary Maker: H. C. (Horace
Clifford) Westermann
Medium: Pencil and red ink



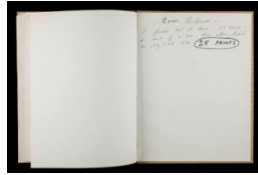
Title: The Connecticut
Ballroom: Album à
Dessin, Untitled
[Sketchbook #15, leaf 23]
Date: 1975 - 1981
Primary Maker: H. C. (Horace
Clifford) Westermann
Medium: Black and red ink



Title: The Connecticut
Ballroom: Album à
Dessin, Untitled
[Sketchbook #15, leaf 24]
Date: 1975 - 1981
Primary Maker: H. C. (Horace
Clifford) Westermann
Medium: Black ink



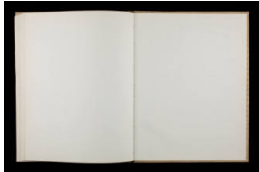
Title: The Connecticut Ballroom: Album à Dessin, Untitled
[Sketchbook #15, leaf 25]
Date: 1975 - 1981
Primary Maker: H. C. (Horace Clifford) Westermann
Medium: Black and red ink



Title: The Connecticut Ballroom: Album à Dessin, Untitled
[Sketchbook #15, leaf 26]
Date: 1975 - 1981
Primary Maker: H. C. (Horace Clifford) Westermann
Medium: Black ink



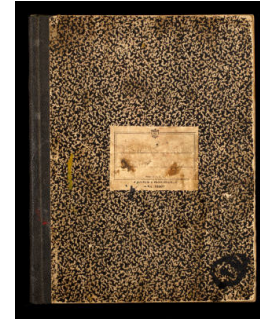
Title: The Connecticut Ballroom: Album à Dessin, Untitled
[Sketchbook #15, leaf 27]
Date: 1975 - 1981
Primary Maker: H. C. (Horace Clifford) Westermann



Title: The Connecticut Ballroom: Album à Dessin, Untitled
[Sketchbook #15, leaf 28]
Date: 1975 - 1981
Primary Maker: H. C. (Horace Clifford) Westermann
Medium: Black ink



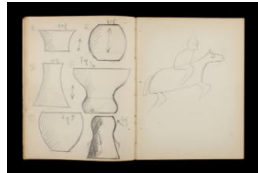
Title: Designs From America [Sketchbook #1, cover]
Date: circa 1952 - 1954
Primary Maker: H. C. (Horace Clifford) Westermann



Title: Designs From America [Sketchbook #1]
Date: circa 1952 - 1954
Primary Maker: H. C. (Horace Clifford) Westermann



Title: Designs From America [Sketchbook #1, Leaf 67]
Date: circa 1952 - 1954
Primary Maker: H. C. (Horace Clifford) Westermann



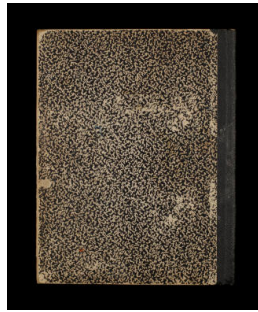
Title: Designs From America [Sketchbook #1, Leaf 95]
Date: circa 1952 - 1954
Primary Maker: H. C. (Horace Clifford) Westermann



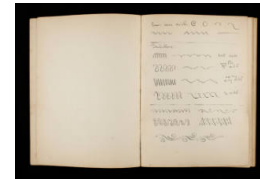
Title: Designs From America [Sketchbook #1, Leaf 1]
Date: circa 1952 - 1954
Primary Maker: H. C. (Horace Clifford) Westermann



Title: Designs From America [Sketchbook #1, Leaf 71]
Date: circa 1952 - 1954
Primary Maker: H. C. (Horace Clifford) Westermann



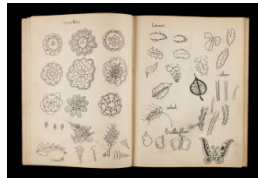
Title: Designs From America [Sketchbook #1, Back cover]
Date: circa 1952 - 1954
Primary Maker: H. C. (Horace Clifford) Westermann



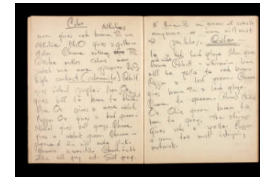
Title: Designs From America [Sketchbook #1, Leaf 2]
Date: circa 1952 - 1954
Primary Maker: H. C. (Horace Clifford) Westermann



Title: Designs From America [Sketchbook #1, Leaf 72]
Date: circa 1952 - 1954
Primary Maker: H. C. (Horace Clifford) Westermann



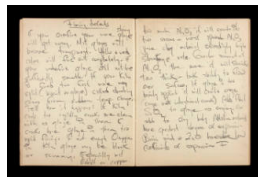
Title: Designs From America [Sketchbook #1, Leaf 3]
Date: circa 1952 - 1954
Primary Maker: H. C. (Horace Clifford) Westermann



Title: Designs From America [Sketchbook #1, Leaf 73]
Date: circa 1952 - 1954
Primary Maker: H. C. (Horace Clifford) Westermann



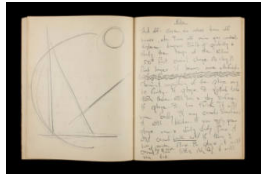
Title: Designs From America [Sketchbook #1, Leaf 4]
Date: circa 1952 - 1954
Primary Maker: H. C. (Horace Clifford) Westermann



Title: Designs From America [Sketchbook #1, Leaf 74]
Date: circa 1952 - 1954
Primary Maker: H. C. (Horace Clifford) Westermann



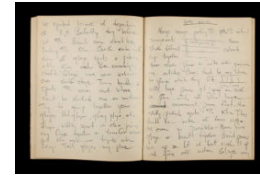
Title: Designs From America [Sketchbook #1, Leaf 5]
Date: circa 1952 - 1954
Primary Maker: H. C. (Horace Clifford) Westermann



Title: Designs From America [Sketchbook #1, Leaf 75]
Date: circa 1952 - 1954
Primary Maker: H. C. (Horace Clifford) Westermann



Title: Designs From America [Sketchbook #1, Leaf 6]
Date: circa 1952 - 1954
Primary Maker: H. C. (Horace Clifford) Westermann



Title: Designs From America [Sketchbook #1, Leaf 76]
Date: circa 1952 - 1954
Primary Maker: H. C. (Horace Clifford) Westermann



Title: Designs From America [Sketchbook #1, Leaf 7]
Date: circa 1952 - 1954
Primary Maker: H. C. (Horace Clifford) Westermann



Title: Designs From America [Sketchbook #1, Leaf 77]
Date: circa 1952 - 1954
Primary Maker: H. C. (Horace Clifford) Westermann



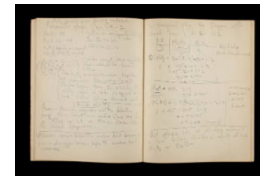
Title: Designs From America [Sketchbook #1, Leaf 8]
Date: circa 1952 - 1954
Primary Maker: H. C. (Horace Clifford) Westermann



Title: Designs From America [Sketchbook #1, Leaf 78]
Date: circa 1952 - 1954
Primary Maker: H. C. (Horace Clifford) Westermann



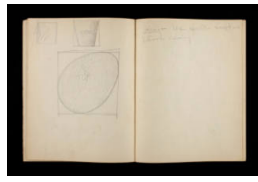
Title: Designs From America [Sketchbook #1, Leaf 9]
Date: circa 1952 - 1954
Primary Maker: H. C. (Horace Clifford) Westermann



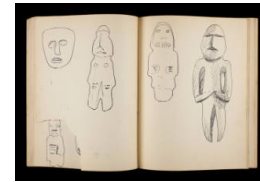
Title: Designs From America [Sketchbook #1, Leaf 79]
Date: circa 1952 - 1954
Primary Maker: H. C. (Horace Clifford) Westermann



Title: Designs From America [Sketchbook #1, Leaf 10]
Date: circa 1952 - 1954
Primary Maker: H. C. (Horace Clifford) Westermann



Title: Designs From America [Sketchbook #1, Leaf 80]
Date: circa 1952 - 1954
Primary Maker: H. C. (Horace Clifford) Westermann



Title: Designs From America [Sketchbook #1, Leaf 11]
Date: circa 1952 - 1954
Primary Maker: H. C. (Horace Clifford) Westermann



Title: Designs From America [Sketchbook #1, Leaf 81]
Date: circa 1952 - 1954
Primary Maker: H. C. (Horace Clifford) Westermann



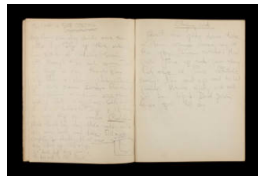
Title: Designs From America [Sketchbook #1, Leaf 12]
Date: circa 1952 - 1954
Primary Maker: H. C. (Horace Clifford) Westermann



Title: Designs From America [Sketchbook #1, Leaf 82]
Date: circa 1952 - 1954
Primary Maker: H. C. (Horace Clifford) Westermann



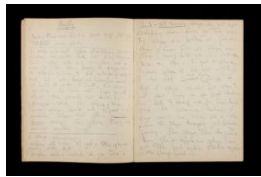
Title: Designs From America [Sketchbook #1, Leaf 13]
Date: circa 1952 - 1954
Primary Maker: H. C. (Horace Clifford) Westermann



Title: Designs From America [Sketchbook #1, Leaf 83]
Date: circa 1952 - 1954
Primary Maker: H. C. (Horace Clifford) Westermann



Title: Designs From America [Sketchbook #1, Leaf 14]
Date: circa 1952 - 1954
Primary Maker: H. C. (Horace Clifford) Westermann



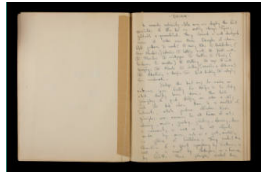
Title: Designs From America [Sketchbook #1, Leaf 84]
Date: circa 1952 - 1954
Primary Maker: H. C. (Horace Clifford) Westermann



Title: Designs From America [Sketchbook #1, Leaf 19]
Date: circa 1952 - 1954
Primary Maker: H. C. (Horace Clifford) Westermann
Medium: Page adhered to book with masking tape



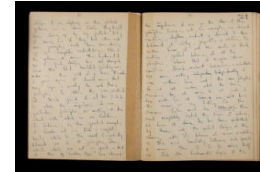
Title: Designs From America [Sketchbook #1, Leaf 85]
Date: circa 1952 - 1954
Primary Maker: H. C. (Horace Clifford) Westermann



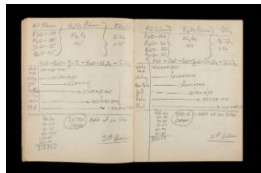
Title: Designs From America [Sketchbook #1, Leaves 20-25]
Date: circa 1952 - 1954
Primary Maker: H. C. (Horace Clifford) Westermann



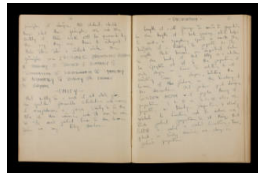
Title: Designs From America [Sketchbook #1, Leaf 85]
Date: circa 1952 - 1954
Primary Maker: H. C. (Horace Clifford) Westermann



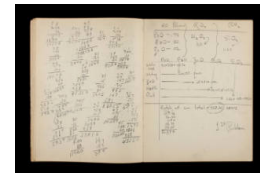
Title: Designs From America [Sketchbook #1, Leaves 20-25]
Date: circa 1952 - 1954
Primary Maker: H. C. (Horace Clifford) Westermann



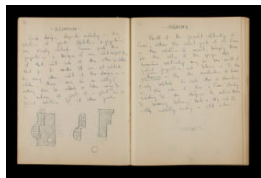
Title: Designs From America [Sketchbook #1, Leaf 86]
Date: circa 1952 - 1954
Primary Maker: H. C. (Horace Clifford) Westermann



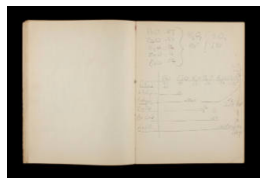
Title: Designs From America [Sketchbook #1, Leaves 20-25]
Date: circa 1952 - 1954
Primary Maker: H. C. (Horace Clifford) Westermann



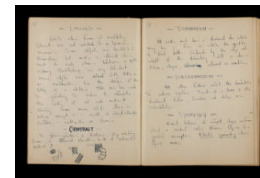
Title: Designs From America [Sketchbook #1, Leaf 87]
Date: circa 1952 - 1954
Primary Maker: H. C. (Horace Clifford) Westermann



Title: Designs From America [Sketchbook #1, Leaves 20-25]
Date: circa 1952 - 1954
Primary Maker: H. C. (Horace Clifford) Westermann



Title: Designs From America [Sketchbook #1, Leaf 88]
Date: circa 1952 - 1954
Primary Maker: H. C. (Horace Clifford) Westermann



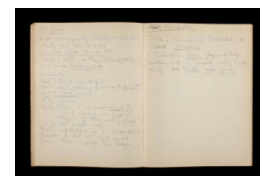
Title: Designs From America [Sketchbook #1, Leaves 20-25]
Date: circa 1952 - 1954
Primary Maker: H. C. (Horace Clifford) Westermann



Title: Designs From America [Sketchbook #1, Leaf 89]
Date: circa 1952 - 1954
Primary Maker: H. C. (Horace Clifford) Westermann



Title: Designs From America [Sketchbook #1, Leaves 20-25]
Date: circa 1952 - 1954
Primary Maker: H. C. (Horace Clifford) Westermann



Title: Designs From America [Sketchbook #1, Leaf 90]
Date: circa 1952 - 1954
Primary Maker: H. C. (Horace Clifford) Westermann



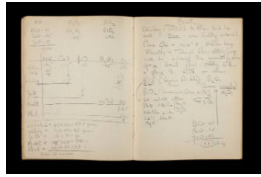
Title: Designs From America [Sketchbook #1, Leaves 20-25]
Date: circa 1952 - 1954
Primary Maker: H. C. (Horace Clifford) Westermann
Medium: Pencil and paper



Title: Designs From America [Sketchbook #1, Leaf 91]
Date: circa 1952 - 1954
Primary Maker: H. C. (Horace Clifford) Westermann



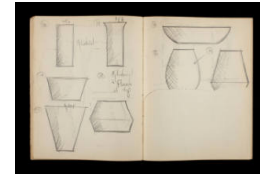
Title: Designs From America [Sketchbook #1, Leaf 27]
Date: circa 1952 - 1954
Primary Maker: H. C. (Horace Clifford) Westermann



Title: Designs From America [Sketchbook #1, Leaf 92]
Date: circa 1952 - 1954
Primary Maker: H. C. (Horace Clifford) Westermann



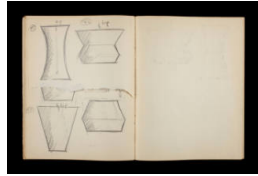
Title: Designs From America [Sketchbook #1, Leaf 64]
Date: circa 1952 - 1954
Primary Maker: H. C. (Horace Clifford) Westermann



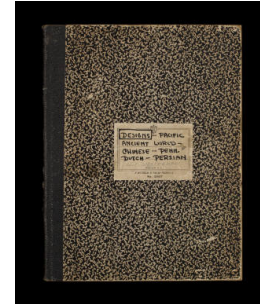
Title: Designs From America [Sketchbook #1, Leaf 93]
Date: circa 1952 - 1954
Primary Maker: H. C. (Horace Clifford) Westermann



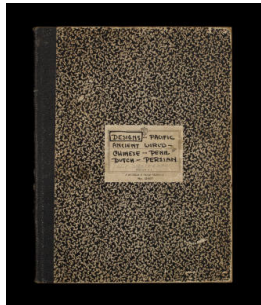
Title: Designs From America [Sketchbook #1, Leaf 65]
Date: circa 1952 - 1954
Primary Maker: H. C. (Horace Clifford) Westermann
Medium: Sheet adhered to book



Title: Designs From America [Sketchbook #1, Leaf 94]
Date: circa 1952 - 1954
Primary Maker: H. C. (Horace Clifford) Westermann



Title: Designs--Pacific Ancient World--Chinese--Penn. Dutch--Persian [Sketchbook #2, cover]
Date: circa 1952 - 1954
Primary Maker: H. C. (Horace Clifford) Westermann



Title: Designs--Pacific Ancient World--Chinese--Penn.Dutch--Persian [Sketchbook #2]
Date: circa 1952 - 1954
Primary Maker: H. C. (Horace Clifford) Westermann



Title: Designs--Pacific Ancient World--Chinese--Penn.Dutch--Persian [Sketchbook #2, Leaf 42]
Date: circa 1952 - 1954
Primary Maker: H. C. (Horace Clifford) Westermann



Title: Designs--Pacific Ancient World--Chinese--Penn.Dutch--Persian [Sketchbook #2, Leaf 75]
Date: circa 1952 - 1954
Primary Maker: H. C. (Horace Clifford) Westermann



Title: Designs--Pacific
Ancient World--Chinese--
Penn.Dutch--Persian
[Sketchbook #2, back
cover]

Date: circa 1952 - 1954

Primary Maker: H. C. (Horace
Clifford) Westermann



Title: Designs--Pacific
Ancient World--Chinese--
Penn.Dutch--Persian
[Sketchbook #2, Leaf 5]

Date: circa 1952 - 1954

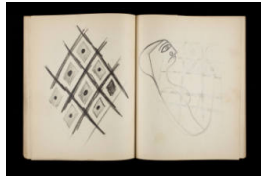
Primary Maker: H. C. (Horace
Clifford) Westermann



Title: Designs--Pacific
Ancient World--Chinese--
Penn.Dutch--Persian
[Sketchbook #2, Leaf 43]

Date: circa 1952 - 1954

Primary Maker: H. C. (Horace
Clifford) Westermann



Title: Designs--Pacific
Ancient World--Chinese--
Penn.Dutch--Persian
[Sketchbook #2, Leaf 76]

Date: circa 1952 - 1954

Primary Maker: H. C. (Horace
Clifford) Westermann



Title: Designs--Pacific
Ancient World--Chinese--
Penn.Dutch--Persian
[Sketchbook #2, Leaf 17]

Date: circa 1952 - 1954

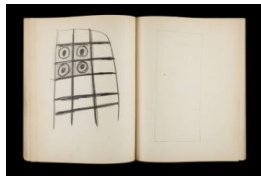
Primary Maker: H. C. (Horace
Clifford) Westermann



Title: Designs--Pacific
Ancient World--Chinese--
Penn.Dutch--Persian
[Sketchbook #2, Leaf 44]

Date: circa 1952 - 1954

Primary Maker: H. C. (Horace
Clifford) Westermann



Title: Designs--Pacific
Ancient World--Chinese--
Penn.Dutch--Persian
[Sketchbook #2, Leaf 77]

Date: circa 1952 - 1954

Primary Maker: H. C. (Horace
Clifford) Westermann



Title: Designs--Pacific
Ancient World--Chinese--
Penn.Dutch--Persian
[Sketchbook #2, Leaf 18]

Date: circa 1952 - 1954

Primary Maker: H. C. (Horace
Clifford) Westermann



Title: Designs--Pacific
Ancient World--Chinese--
Penn.Dutch--Persian
[Sketchbook #2, Leaf 47]

Date: circa 1952 - 1954

Primary Maker: H. C. (Horace
Clifford) Westermann



Title: Designs--Pacific
Ancient World--Chinese--
Penn.Dutch--Persian
[Sketchbook #2, Leaf 78]
Date: circa 1952 - 1954
Primary Maker: H. C. (Horace
Clifford) Westermann



Title: Designs--Pacific
Ancient World--Chinese--
Penn.Dutch--Persian
[Sketchbook #2, Leaf 19]
Date: circa 1952 - 1954
Primary Maker: H. C. (Horace
Clifford) Westermann



Title: Designs--Pacific
Ancient World--Chinese--
Penn.Dutch--Persian
[Sketchbook #2, Leaf 48]
Date: circa 1952 - 1954
Primary Maker: H. C. (Horace
Clifford) Westermann



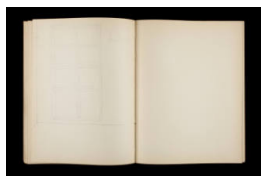
Title: Designs--Pacific
Ancient World--Chinese--
Penn.Dutch--Persian
[Sketchbook #2, Leaf 79]
Date: circa 1952 - 1954
Primary Maker: H. C. (Horace
Clifford) Westermann



Title: Designs--Pacific
Ancient World--Chinese--
Penn.Dutch--Persian
[Sketchbook #2, Leaf 20]
Date: circa 1952 - 1954
Primary Maker: H. C. (Horace
Clifford) Westermann



Title: Designs--Pacific
Ancient World--Chinese--
Penn.Dutch--Persian
[Sketchbook #2, Leaf 50]
Date: circa 1952 - 1954
Primary Maker: H. C. (Horace
Clifford) Westermann



Title: Designs--Pacific
Ancient World--Chinese--
Penn.Dutch--Persian
[Sketchbook #2, Leaves
80-97]
Date: circa 1952 - 1954
Primary Maker: H. C. (Horace
Clifford) Westermann



Title: Designs--Pacific
Ancient World--Chinese--
Penn.Dutch--Persian
[Sketchbook #2, Leaf 21]
Date: circa 1952 - 1954
Primary Maker: H. C. (Horace
Clifford) Westermann



Title: Designs--Pacific
Ancient World--Chinese--
Penn.Dutch--Persian
[Sketchbook #2, Leaf 51]
Date: circa 1952 - 1954
Primary Maker: H. C. (Horace
Clifford) Westermann



Title: Designs--Pacific
Ancient World--Chinese--
Penn.Dutch--Persian
[Sketchbook #2, Leaf 22]
Date: circa 1952 - 1954
Primary Maker: H. C. (Horace
Clifford) Westermann



Title: Designs--Pacific
Ancient World--Chinese--
Penn.Dutch--Persian
[Sketchbook #2, Leaf 52]
Date: circa 1952 - 1954
Primary Maker: H. C. (Horace
Clifford) Westermann



Title: Designs--Pacific
Ancient World--Chinese--
Penn.Dutch--Persian
[Sketchbook #2, Leaf 23]
Date: circa 1952 - 1954
Primary Maker: H. C. (Horace
Clifford) Westermann



Title: Designs--Pacific
Ancient World--Chinese--
Penn.Dutch--Persian
[Sketchbook #2, Leaf 53]
Date: circa 1952 - 1954
Primary Maker: H. C. (Horace
Clifford) Westermann



Title: Designs--Pacific
Ancient World--Chinese--
Penn.Dutch--Persian
[Sketchbook #2, Leaf 25]
Date: circa 1952 - 1954
Primary Maker: H. C. (Horace
Clifford) Westermann



Title: Designs--Pacific
Ancient World--Chinese--
Penn.Dutch--Persian
[Sketchbook #2, Leaf 54]
Date: circa 1952 - 1954
Primary Maker: H. C. (Horace
Clifford) Westermann



Title: Designs--Pacific
Ancient World--Chinese--
Penn.Dutch--Persian
[Sketchbook #2, Leaf 26]
Date: circa 1952 - 1954
Primary Maker: H. C. (Horace
Clifford) Westermann



Title: Designs--Pacific
Ancient World--Chinese--
Penn.Dutch--Persian
[Sketchbook #2, Leaf 55]
Date: circa 1952 - 1954
Primary Maker: H. C. (Horace
Clifford) Westermann



Title: Designs--Pacific
Ancient World--Chinese--
Penn.Dutch--Persian
[Sketchbook #2, Leaf 27]
Date: circa 1952 - 1954
Primary Maker: H. C. (Horace
Clifford) Westermann



Title: Designs--Pacific
Ancient World--Chinese--
Penn.Dutch--Persian
[Sketchbook #2, Leaf 56]
Date: circa 1952 - 1954
Primary Maker: H. C. (Horace
Clifford) Westermann



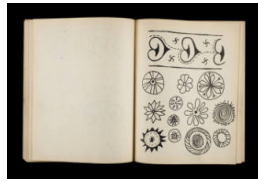
Title: Designs--Pacific
Ancient World--Chinese--
Penn.Dutch--Persian
[Sketchbook #2, Leaf 28]
Date: circa 1952 - 1954
Primary Maker: H. C. (Horace
Clifford) Westermann



Title: Designs--Pacific
Ancient World--Chinese--
Penn.Dutch--Persian
[Sketchbook #2, Leaf 57]
Date: circa 1952 - 1954
Primary Maker: H. C. (Horace
Clifford) Westermann



Title: Designs--Pacific
Ancient World--Chinese--
Penn.Dutch--Persian
[Sketchbook #2, Leaf 29]
Date: circa 1952 - 1954
Primary Maker: H. C. (Horace
Clifford) Westermann



Title: Designs--Pacific
Ancient World--Chinese--
Penn.Dutch--Persian
[Sketchbook #2, Leaf 58]
Date: circa 1952 - 1954
Primary Maker: H. C. (Horace
Clifford) Westermann



Title: Designs--Pacific
Ancient World--Chinese--
Penn.Dutch--Persian
[Sketchbook #2, Leaf 30]
Date: circa 1952 - 1954
Primary Maker: H. C. (Horace
Clifford) Westermann



Title: Designs--Pacific
Ancient World--Chinese--
Penn.Dutch--Persian
[Sketchbook #2, Leaf 59]
Date: circa 1952 - 1954
Primary Maker: H. C. (Horace
Clifford) Westermann



Title: Designs--Pacific
Ancient World--Chinese--
Penn.Dutch--Persian
[Sketchbook #2, Leaf 31]
Date: circa 1952 - 1954
Primary Maker: H. C. (Horace
Clifford) Westermann



Title: Designs--Pacific
Ancient World--Chinese--
Penn.Dutch--Persian
[Sketchbook #2, Leaf 60]
Date: circa 1952 - 1954
Primary Maker: H. C. (Horace
Clifford) Westermann



Title: Designs--Pacific
Ancient World--Chinese--
Penn.Dutch--Persian
[Sketchbook #2, Leaf 32]
Date: circa 1952 - 1954
Primary Maker: H. C. (Horace
Clifford) Westermann



Title: Designs--Pacific
Ancient World--Chinese--
Penn.Dutch--Persian
[Sketchbook #2, Leaf 61]
Date: circa 1952 - 1954
Primary Maker: H. C. (Horace
Clifford) Westermann



Title: Designs--Pacific
Ancient World--Chinese--
Penn.Dutch--Persian
[Sketchbook #2, Leaf 33]
Date: circa 1952 - 1954
Primary Maker: H. C. (Horace
Clifford) Westermann



Title: Designs--Pacific
Ancient World--Chinese--
Penn.Dutch--Persian
[Sketchbook #2, Leaf 62]
Date: circa 1952 - 1954
Primary Maker: H. C. (Horace
Clifford) Westermann



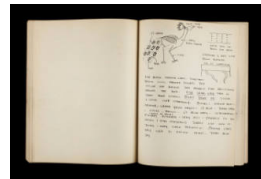
Title: Designs--Pacific
Ancient World--Chinese--
Penn.Dutch--Persian
[Sketchbook #2, Leaf 34]
Date: circa 1952 - 1954
Primary Maker: H. C. (Horace
Clifford) Westermann



Title: Designs--Pacific
Ancient World--Chinese--
Penn.Dutch--Persian
[Sketchbook #2, Leaf 63]
Date: circa 1952 - 1954
Primary Maker: H. C. (Horace
Clifford) Westermann



Title: Designs--Pacific
Ancient World--Chinese--
Penn.Dutch--Persian
[Sketchbook #2, Leaf 35]
Date: circa 1952 - 1954
Primary Maker: H. C. (Horace
Clifford) Westermann



Title: Designs--Pacific
Ancient World--Chinese--
Penn.Dutch--Persian
[Sketchbook #2, Leaf 64]
Date: circa 1952 - 1954
Primary Maker: H. C. (Horace
Clifford) Westermann



Title: Designs--Pacific
Ancient World--Chinese--
Penn.Dutch--Persian
[Sketchbook #2, Leaf 36]
Date: circa 1952 - 1954
Primary Maker: H. C. (Horace
Clifford) Westermann



Title: Designs--Pacific
Ancient World--Chinese--
Penn.Dutch--Persian
[Sketchbook #2, Leaf 65]
Date: circa 1952 - 1954
Primary Maker: H. C. (Horace
Clifford) Westermann



Title: Designs--Pacific
Ancient World--Chinese--
Penn.Dutch--Persian
[Sketchbook #2, Leaf 37]
Date: circa 1952 - 1954
Primary Maker: H. C. (Horace
Clifford) Westermann



Title: Designs--Pacific
Ancient World--Chinese--
Penn.Dutch--Persian
[Sketchbook #2, Leaf 66]
Date: circa 1952 - 1954
Primary Maker: H. C. (Horace
Clifford) Westermann



Title: Designs--Pacific
Ancient World--Chinese--
Penn.Dutch--Persian
[Sketchbook #2, Leaf 38]
Date: circa 1952 - 1954
Primary Maker: H. C. (Horace
Clifford) Westermann



Title: Designs--Pacific
Ancient World--Chinese--
Penn.Dutch--Persian
[Sketchbook #2, Leaf 70]
Date: circa 1952 - 1954
Primary Maker: H. C. (Horace
Clifford) Westermann



Title: Designs--Pacific
Ancient World--Chinese--
Penn.Dutch--Persian
[Sketchbook #2, Leaves
80-97]
Date: circa 1952 - 1954
Primary Maker: H. C. (Horace
Clifford) Westermann



Title: Designs--Pacific
Ancient World--Chinese--
Penn.Dutch--Persian
[Sketchbook #2, Leaf 39]
Date: circa 1952 - 1954
Primary Maker: H. C. (Horace
Clifford) Westermann



Title: Designs--Pacific
Ancient World--Chinese--
Penn.Dutch--Persian
[Sketchbook #2, Leaf 72]
Date: circa 1952 - 1954
Primary Maker: H. C. (Horace
Clifford) Westermann



Title: Designs--Pacific
Ancient World--Chinese--
Penn.Dutch--Persian
[Sketchbook #2, Leaf 98]
Date: circa 1952 - 1954
Primary Maker: H. C. (Horace
Clifford) Westermann



Title: Designs--Pacific
Ancient World--Chinese--
Penn.Dutch--Persian
[Sketchbook #2, Leaf 40]
Date: circa 1952 - 1954
Primary Maker: H. C. (Horace
Clifford) Westermann



Title: Designs--Pacific
Ancient World--Chinese--
Penn.Dutch--Persian
[Sketchbook #2, Leaf 73]
Date: circa 1952 - 1954
Primary Maker: H. C. (Horace
Clifford) Westermann



Title: Designs--Pacific
Ancient World--Chinese--
Penn.Dutch--Persian
**[Sketchbook #2, Leaf
101]**
Date: circa 1952 - 1954
Primary Maker: H. C. (Horace
Clifford) Westermann



Title: Designs--Pacific
Ancient World--Chinese--
Penn.Dutch--Persian
[Sketchbook #2, Leaf 41]
Date: circa 1952 - 1954
Primary Maker: H. C. (Horace
Clifford) Westermann



Title: Designs--Pacific
Ancient World--Chinese--
Penn.Dutch--Persian
[Sketchbook #2, Leaf 74]
Date: circa 1952 - 1954
Primary Maker: H. C. (Horace
Clifford) Westermann



Title: Designs--Pacific
Ancient World--Chinese--
Penn.Dutch--Persian
**[Sketchbook #2, Leaf
102]**
Date: circa 1952 - 1954
Primary Maker: H. C. (Horace
Clifford) Westermann



Title: Art Institute, H. C.
Westermann
[Sketchbook #3, cover]
Date: circa 1952 - 1954
Primary Maker: H. C. (Horace
Clifford) Westermann
Medium: Black ink



Title: Art Institute, H. C.
Westermann
[Sketchbook #3]
Date: circa 1952 - 1954
Primary Maker: H. C. (Horace
Clifford) Westermann
Medium: Black ink



Title: Art Institute, H. C.
Westermann
[Sketchbook #3, leaf 30]
Date: circa 1952 - 1954
Primary Maker: H. C. (Horace
Clifford) Westermann
Medium: Black ink



Title: Art Institute, H. C. Westermann
[Sketchbook #3, leaf 55]
Date: circa 1952 - 1954
Primary Maker: H. C. (Horace Clifford) Westermann
Medium: Black ink



Title: Art Institute, H. C. Westermann
[Sketchbook #3, leaf 87]
Date: circa 1952 - 1954
Primary Maker: H. C. (Horace Clifford) Westermann
Medium: Pencil



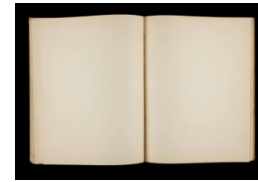
Title: Art Institute, H. C. Westermann
[Sketchbook #3, leaf 1]
Date: circa 1952 - 1954
Primary Maker: H. C. (Horace Clifford) Westermann
Medium: Black ink



Title: Art Institute, H. C. Westermann
[Sketchbook #3, leaf 31]
Date: circa 1952 - 1954
Primary Maker: H. C. (Horace Clifford) Westermann
Medium: Black ink and brown watercolor



Title: Art Institute, H. C. Westermann
[Sketchbook #3, leaf 57]
Date: circa 1952 - 1954
Primary Maker: H. C. (Horace Clifford) Westermann
Medium: Black ink



Title: Art Institute, H. C. Westermann
[Sketchbook #3, leaves 89-91]
Date: circa 1952 - 1954
Primary Maker: H. C. (Horace Clifford) Westermann
Medium: Pencil



Title: Art Institute, H. C. Westermann
[Sketchbook #3, leaf 2]
Date: circa 1952 - 1954
Primary Maker: H. C. (Horace Clifford) Westermann
Medium: Black ink



Title: Art Institute, H. C. Westermann
[Sketchbook #3, leaf 32]
Date: circa 1952 - 1954
Primary Maker: H. C. (Horace Clifford) Westermann
Medium: Black ink and brown and yellow watercolors



Title: Art Institute, H. C. Westermann
[Sketchbook #3, leaf 58]
Date: circa 1952 - 1954
Primary Maker: H. C. (Horace Clifford) Westermann
Medium: Pencil



Title: Art Institute, H. C. Westermann
[Sketchbook #3, leaf 3]
Date: circa 1952 - 1954
Primary Maker: H. C. (Horace Clifford) Westermann
Medium: Black ink



Title: Art Institute, H. C. Westermann
[Sketchbook #3]
Date: circa 1952 - 1954
Primary Maker: H. C. (Horace Clifford) Westermann
Medium: Ink



Title: Art Institute, H. C. Westermann
[Sketchbook #3, leaf 59]
Date: circa 1952 - 1954
Primary Maker: H. C. (Horace Clifford) Westermann
Medium: Pencil



Title: Art Institute, H. C. Westermann
[Sketchbook #3, leaf 92]
Date: circa 1952 - 1954
Primary Maker: H. C. (Horace Clifford) Westermann
Medium: Pencil



Title: Art Institute, H. C. Westermann
[Sketchbook #3, leaf 4]
Date: circa 1952 - 1954
Primary Maker: H. C. (Horace Clifford) Westermann
Medium: Black ink



Title: Art Institute, H. C. Westermann
[Sketchbook #3, leaf 33]
Date: circa 1952 - 1954
Primary Maker: H. C. (Horace Clifford) Westermann
Medium: Black ink and pink watercolor



Title: Art Institute, H. C. Westermann
[Sketchbook #3, leaf 60]
Date: circa 1952 - 1954
Primary Maker: H. C. (Horace Clifford) Westermann
Medium: Pencil



Title: Art Institute, H. C. Westermann
[Sketchbook #3, leaf 93]
Date: circa 1952 - 1954
Primary Maker: H. C. (Horace Clifford) Westermann
Medium: Pencil



Title: Art Institute, H. C. Westermann
[Sketchbook #3, leaf 6]
Date: circa 1952 - 1954
Primary Maker: H. C. (Horace Clifford) Westermann
Medium: Black ink and yellow watercolor



Title: Art Institute, H. C. Westermann
[Sketchbook #3, leaf 34]
Date: circa 1952 - 1954
Primary Maker: H. C. (Horace Clifford) Westermann
Medium: Black ink



Title: Art Institute, H. C. Westermann
[Sketchbook #3, leaf 61]
Date: circa 1952 - 1954
Primary Maker: H. C. (Horace Clifford) Westermann
Medium: Pencil



Title: Art Institute, H. C. Westermann
[Sketchbook #3, leaf 94]
Date: circa 1952 - 1954
Primary Maker: H. C. (Horace Clifford) Westermann
Medium: Pencil



Title: Art Institute, H. C. Westermann
[Sketchbook #3, leaf 7]
Date: circa 1952 - 1954
Primary Maker: H. C. (Horace Clifford) Westermann
Medium: Black ink and salmon watercolor



Title: Art Institute, H. C. Westermann
[Sketchbook #3, leaf 35]
Date: circa 1952 - 1954
Primary Maker: H. C. (Horace Clifford) Westermann
Medium: Black ink, blue ink and pink watercolor



Title: Art Institute, H. C. Westermann
[Sketchbook #3, leaf 62]
Date: circa 1952 - 1954
Primary Maker: H. C. (Horace Clifford) Westermann
Medium: Pencil



Title: Art Institute, H. C. Westermann
[Sketchbook #3, leaf 95]
Date: circa 1952 - 1954
Primary Maker: H. C. (Horace Clifford) Westermann
Medium: Pencil



Title: Art Institute, H. C. Westermann
[Sketchbook #3, leaf 8]
Date: circa 1952 - 1954
Primary Maker: H. C. (Horace Clifford) Westermann
Medium: Black ink and red watercolors



Title: Art Institute, H. C. Westermann
[Sketchbook #3, leaf 36]
Date: circa 1952 - 1954
Primary Maker: H. C. (Horace Clifford) Westermann
Medium: Black ink and pink watercolor



Title: Art Institute, H. C. Westermann
[Sketchbook #3, leaf 63]
Date: circa 1952 - 1954
Primary Maker: H. C. (Horace Clifford) Westermann
Medium: Pencil



Title: Art Institute, H. C. Westermann
[Sketchbook #3, leaf 96]
Date: circa 1952 - 1954
Primary Maker: H. C. (Horace Clifford) Westermann
Medium: Pencil



Title: Art Institute, H. C. Westermann
[Sketchbook #3, leaf 9]
Date: circa 1952 - 1954
Primary Maker: H. C. (Horace Clifford) Westermann
Medium: Black ink and brown watercolor



Title: Art Institute, H. C. Westermann
[Sketchbook #3, leaf 37]
Date: circa 1952 - 1954
Primary Maker: H. C. (Horace Clifford) Westermann
Medium: Black ink



Title: Art Institute, H. C. Westermann
[Sketchbook #3, leaf 64]
Date: circa 1952 - 1954
Primary Maker: H. C. (Horace Clifford) Westermann
Medium: Pencil



Title: Art Institute, H. C. Westermann
[Sketchbook #3, leaf 97]
Date: circa 1952 - 1954
Primary Maker: H. C. (Horace Clifford) Westermann
Medium: Pencil



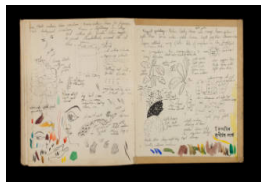
Title: Art Institute, H. C. Westermann
[Sketchbook #3, leaf 10]
Date: circa 1952 - 1954
Primary Maker: H. C. (Horace Clifford) Westermann
Medium: Black ink



Title: Art Institute, H. C. Westermann
[Sketchbook #3, leaf 38]
Date: circa 1952 - 1954
Primary Maker: H. C. (Horace Clifford) Westermann
Medium: Black ink



Title: Art Institute, H. C. Westermann
[Sketchbook #3, leaf 65]
Date: circa 1952 - 1954
Primary Maker: H. C. (Horace Clifford) Westermann
Medium: Pencil



Title: Art Institute, H. C. Westermann
[Sketchbook #3, back cover]
Date: circa 1952 - 1954
Primary Maker: H. C. (Horace Clifford) Westermann
Medium: Pencil



Title: Art Institute, H. C. Westermann
[Sketchbook #3, leaf 11]
Date: circa 1952 - 1954
Primary Maker: H. C. (Horace Clifford) Westermann
Medium: Black ink and brown watercolor



Title: Art Institute, H. C. Westermann
[Sketchbook #3, leaf 39]
Date: circa 1952 - 1954
Primary Maker: H. C. (Horace Clifford) Westermann
Medium: Black ink and pink watercolor



Title: Art Institute, H. C. Westermann
[Sketchbook #3, leaf 66]
Date: circa 1952 - 1954
Primary Maker: H. C. (Horace Clifford) Westermann
Medium: Pencil



Title: Art Institute, H. C. Westermann
[Sketchbook #3]
Date: circa 1952 - 1954
Primary Maker: H. C. (Horace Clifford) Westermann
Medium: Black ink



Title: Art Institute, H. C. Westermann
[Sketchbook #3, leaf 40]
Date: circa 1952 - 1954
Primary Maker: H. C. (Horace Clifford) Westermann
Medium: Black ink and pink watercolor



Title: Art Institute, H. C. Westermann
[Sketchbook #3, leaf 67]
Date: circa 1952 - 1954
Primary Maker: H. C. (Horace Clifford) Westermann
Medium: Pencil



Title: Art Institute, H. C. Westermann
[Sketchbook #3, leaf 12]
Date: circa 1952 - 1954
Primary Maker: H. C. (Horace Clifford) Westermann
Medium: Black ink



Title: Art Institute, H. C. Westermann
[Sketchbook #3, leaf 41]
Date: circa 1952 - 1954
Primary Maker: H. C. (Horace Clifford) Westermann
Medium: Black ink and watercolors



Title: Art Institute, H. C. Westermann
[Sketchbook #3, leaf 68]
Date: circa 1952 - 1954
Primary Maker: H. C. (Horace Clifford) Westermann
Medium: Pencil



Title: Art Institute, H. C. Westermann
[Sketchbook #3, leaf 13]
Date: circa 1952 - 1954
Primary Maker: H. C. (Horace Clifford) Westermann
Medium: Black ink



Title: Art Institute, H. C. Westermann
[Sketchbook #3, leaf 42]
Date: circa 1952 - 1954
Primary Maker: H. C. (Horace Clifford) Westermann
Medium: Black ink and watercolors



Title: Art Institute, H. C. Westermann
[Sketchbook #3, leaf 69]
Date: circa 1952 - 1954
Primary Maker: H. C. (Horace Clifford) Westermann
Medium: Pencil



Title: Art Institute, H. C. Westermann
[Sketchbook #3, leaf 14]
Date: circa 1952 - 1954
Primary Maker: H. C. (Horace Clifford) Westermann
Medium: Black ink



Title: Art Institute, H. C. Westermann
[Sketchbook #3, leaf 43]
Date: circa 1952 - 1954
Primary Maker: H. C. (Horace Clifford) Westermann
Medium: Black ink



Title: Art Institute, H. C. Westermann
[Sketchbook #3, leaf 70]
Date: circa 1952 - 1954
Primary Maker: H. C. (Horace Clifford) Westermann
Medium: Pencil



Title: Art Institute, H. C. Westermann
[Sketchbook #3, leaf 15]
Date: circa 1952 - 1954
Primary Maker: H. C. (Horace Clifford) Westermann
Medium: Black ink



Title: Art Institute, H. C. Westermann
[Sketchbook #3, leaf 44]
Date: circa 1952 - 1954
Primary Maker: H. C. (Horace Clifford) Westermann
Medium: Black ink and colored pens



Title: Art Institute, H. C. Westermann
[Sketchbook #3, leaf 71]
Date: circa 1952 - 1954
Primary Maker: H. C. (Horace Clifford) Westermann
Medium: Pencil



Title: Art Institute, H. C. Westermann
[Sketchbook #3, leaf 18]
Date: circa 1952 - 1954
Primary Maker: H. C. (Horace Clifford) Westermann
Medium: Black ink



Title: Art Institute, H. C. Westermann
[Sketchbook #3, leaf 45]
Date: circa 1952 - 1954
Primary Maker: H. C. (Horace Clifford) Westermann
Medium: Black ink



Title: Art Institute, H. C. Westermann
[Sketchbook #3, leaf 72]
Date: circa 1952 - 1954
Primary Maker: H. C. (Horace Clifford) Westermann
Medium: Pencil



Title: Art Institute, H. C. Westermann
[Sketchbook #3, leaf 19]
Date: circa 1952 - 1954
Primary Maker: H. C. (Horace Clifford) Westermann
Medium: Black ink



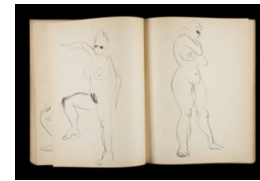
Title: Art Institute, H. C. Westermann
[Sketchbook #3, leaf 46]
Date: circa 1952 - 1954
Primary Maker: H. C. (Horace Clifford) Westermann
Medium: Black ink



Title: Art Institute, H. C. Westermann
[Sketchbook #3, leaf 73]
Date: circa 1952 - 1954
Primary Maker: H. C. (Horace Clifford) Westermann
Medium: Pencil



Title: Art Institute, H. C. Westermann
[Sketchbook #3, leaf 20]
Date: circa 1952 - 1954
Primary Maker: H. C. (Horace Clifford) Westermann
Medium: Black ink



Title: Art Institute, H. C. Westermann
[Sketchbook #3]
Date: circa 1952 - 1954
Primary Maker: H. C. (Horace Clifford) Westermann
Medium: Black ink



Title: Art Institute, H. C. Westermann
[Sketchbook #3, leaf 74]
Date: circa 1952 - 1954
Primary Maker: H. C. (Horace Clifford) Westermann
Medium: Pencil



Title: Art Institute, H. C. Westermann
[Sketchbook #3, leaf 21]
Date: circa 1952 - 1954
Primary Maker: H. C. (Horace Clifford) Westermann
Medium: Black ink



Title: Art Institute, H. C. Westermann
[Sketchbook #3, leaf 48]
Date: circa 1952 - 1954
Primary Maker: H. C. (Horace Clifford) Westermann
Medium: Black ink



Title: Art Institute, H. C. Westermann
[Sketchbook #3, leaf 75]
Date: circa 1952 - 1954
Primary Maker: H. C. (Horace Clifford) Westermann
Medium: Pencil



Title: Art Institute, H. C. Westermann
[Sketchbook #3, leaf 23]
Date: circa 1952 - 1954
Primary Maker: H. C. (Horace Clifford) Westermann
Medium: Black ink



Title: Art Institute, H. C. Westermann
[Sketchbook #3, leaf 49]
Date: circa 1952 - 1954
Primary Maker: H. C. (Horace Clifford) Westermann
Medium: Black ink



Title: Art Institute, H. C. Westermann
[Sketchbook #3, leaf 76]
Date: circa 1952 - 1954
Primary Maker: H. C. (Horace Clifford) Westermann
Medium: Pencil



Title: Art Institute, H. C. Westermann
[Sketchbook #3, leaf 24]
Date: circa 1952 - 1954
Primary Maker: H. C. (Horace Clifford) Westermann
Medium: Black ink



Title: Art Institute, H. C. Westermann
[Sketchbook #3, leaf 50]
Date: circa 1952 - 1954
Primary Maker: H. C. (Horace Clifford) Westermann
Medium: Black ink



Title: Art Institute, H. C. Westermann
[Sketchbook #3, leaf 77]
Date: circa 1952 - 1954
Primary Maker: H. C. (Horace Clifford) Westermann
Medium: Pencil



Title: Art Institute, H. C. Westermann
[Sketchbook #3, leaf 25]
Date: circa 1952 - 1954
Primary Maker: H. C. (Horace Clifford) Westermann
Medium: Black ink



Title: Art Institute, H. C. Westermann
[Sketchbook #3, leaf 51]
Date: circa 1952 - 1954
Primary Maker: H. C. (Horace Clifford) Westermann
Medium: Black ink



Title: Art Institute, H. C. Westermann
[Sketchbook #3, leaf 78]
Date: circa 1952 - 1954
Primary Maker: H. C. (Horace Clifford) Westermann
Medium: Pencil



Title: Art Institute, H. C. Westermann
[Sketchbook #3, leaf 27]
Date: circa 1952 - 1954
Primary Maker: H. C. (Horace Clifford) Westermann
Medium: Black ink



Title: Art Institute, H. C. Westermann
[Sketchbook #3, leaf 52]
Date: circa 1952 - 1954
Primary Maker: H. C. (Horace Clifford) Westermann
Medium: Black ink



Title: Art Institute, H. C. Westermann
[Sketchbook #3, leaf 81]
Date: circa 1952 - 1954
Primary Maker: H. C. (Horace Clifford) Westermann
Medium: Pencil



Title: Art Institute, H. C. Westermann
[Sketchbook #3, leaf 28]
Date: circa 1952 - 1954
Primary Maker: H. C. (Horace Clifford) Westermann
Medium: Black ink and yellow watercolor



Title: Art Institute, H. C. Westermann
[Sketchbook #3, leaf 53]
Date: circa 1952 - 1954
Primary Maker: H. C. (Horace Clifford) Westermann
Medium: Black ink



Title: Art Institute, H. C. Westermann
[Sketchbook #3, leaf 82]
Date: circa 1952 - 1954
Primary Maker: H. C. (Horace Clifford) Westermann
Medium: Pencil



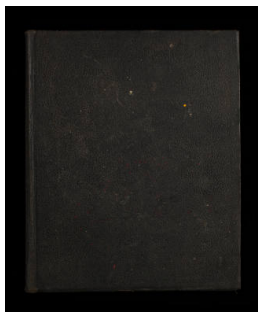
Title: Art Institute, H. C. Westermann
[Sketchbook #3, leaf 29]
Date: circa 1952 - 1954
Primary Maker: H. C. (Horace Clifford) Westermann
Medium: Black ink and brown and yellow watercolors



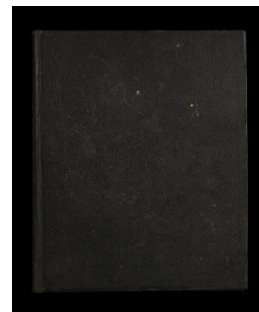
Title: Art Institute, H. C. Westermann
[Sketchbook #3, leaf 54]
Date: circa 1952 - 1954
Primary Maker: H. C. (Horace Clifford) Westermann
Medium: Black ink



Title: Art Institute, H. C. Westermann
[Sketchbook #3, leaf 83]
Date: circa 1952 - 1954
Primary Maker: H. C. (Horace Clifford) Westermann
Medium: Pencil



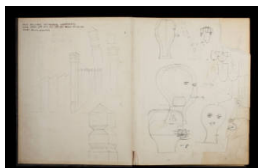
Title: Sketchbook #4,
Untitled [cover]
Date: circa 1958 - 1961
Primary Maker: H. C. (Horace Clifford) Westermann
Medium: Pencil



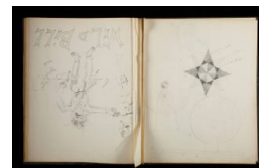
Title: Sketchbook #4,
Untitled
Date: circa 1958 - 1961
Primary Maker: H. C. (Horace Clifford) Westermann
Medium: Pencil



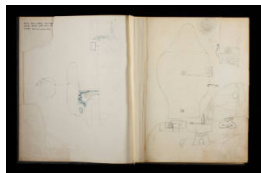
Title: Sketchbook #4,
Untitled [leaf 63]
Date: circa 1958 - 1961
Primary Maker: H. C. (Horace Clifford) Westermann
Medium: Pencil



Title: Sketchbook #4,
Untitled [leaf 1]
Date: circa 1958 - 1961
Primary Maker: H. C. (Horace Clifford) Westermann
Medium: Pencil, blue ink



Title: Sketchbook #4,
Untitled [leaf 88]
Date: circa 1958 - 1961
Primary Maker: H. C. (Horace Clifford) Westermann
Medium: Pencil



Title: Sketchbook #4,
Untitled [leaf 6]
Date: circa 1958 - 1961
Primary Maker: H. C. (Horace
Clifford) Westermann
Medium: Pencil



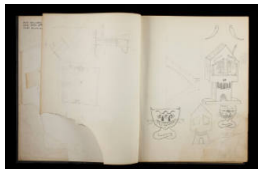
Title: Sketchbook #4,
Untitled [leaf 89]
Date: circa 1958 - 1961
Primary Maker: H. C. (Horace
Clifford) Westermann
Medium: Pencil, red pencil



Title: Sketchbook #4,
Untitled [leaf 9]
Date: circa 1958 - 1961
Primary Maker: H. C. (Horace
Clifford) Westermann
Medium: Pencil



Title: Sketchbook #4,
Untitled [leaf 90]
Date: circa 1958 - 1961
Primary Maker: H. C. (Horace
Clifford) Westermann
Medium: Pencil



Title: Sketchbook #4,
Untitled [leaf 10]
Date: circa 1958 - 1961
Primary Maker: H. C. (Horace
Clifford) Westermann
Medium: Pencil



Title: Sketchbook #4,
Untitled [leaf 91]
Date: circa 1958 - 1961
Primary Maker: H. C. (Horace
Clifford) Westermann
Medium: Pencil



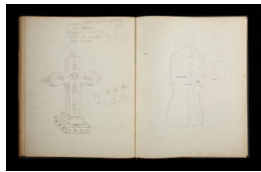
Title: Sketchbook #4,
Untitled [leaf 11]
Date: circa 1958 - 1961
Primary Maker: H. C. (Horace
Clifford) Westermann
Medium: Pencil



Title: Sketchbook #4,
Untitled [leaf 92]
Date: circa 1958 - 1961
Primary Maker: H. C. (Horace
Clifford) Westermann
Medium: Pencil



Title: Sketchbook #4,
Untitled [leaf 12]
Date: circa 1958 - 1961
Primary Maker: H. C. (Horace
Clifford) Westermann
Medium: Pencil



Title: Sketchbook #4,
Untitled [leaf 93]
Date: circa 1958 - 1961
Primary Maker: H. C. (Horace
Clifford) Westermann
Medium: Pencil



Title: Sketchbook #4,
Untitled [leaf 13]
Date: circa 1958 - 1961
Primary Maker: H. C. (Horace
Clifford) Westermann
Medium: Pencil



Title: Sketchbook #4,
Untitled [leaf 94]
Date: circa 1958 - 1961
Primary Maker: H. C. (Horace
Clifford) Westermann
Medium: Pencil



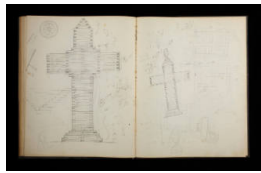
Title: Sketchbook #4,
Untitled [leaf 14]
Date: circa 1958 - 1961
Primary Maker: H. C. (Horace
Clifford) Westermann
Medium: Pencil



Title: Sketchbook #4,
Untitled [leaf 97]
Date: circa 1958 - 1961
Primary Maker: H. C. (Horace
Clifford) Westermann
Medium: Pencil



Title: Sketchbook #4,
Untitled [leaf 15]
Date: circa 1958 - 1961
Primary Maker: H. C. (Horace
Clifford) Westermann
Medium: Pencil



Title: Sketchbook #4,
Untitled [leaf 98]
Date: circa 1958 - 1961
Primary Maker: H. C. (Horace
Clifford) Westermann
Medium: Pencil, black ink



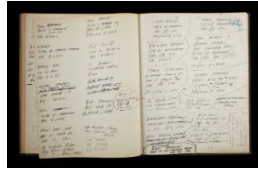
Title: Sketchbook #4,
Untitled [leaf 16]
Date: circa 1958 - 1961
Primary Maker: H. C. (Horace
Clifford) Westermann
Medium: Pencil



Title: Sketchbook #4,
Untitled [leaf 99]
Date: circa 1958 - 1961
Primary Maker: H. C. (Horace
Clifford) Westermann
Medium: Pencil



Title: Sketchbook #4,
Untitled [leaf 17]
Date: circa 1958 - 1961
Primary Maker: H. C. (Horace
Clifford) Westermann
Medium: Pencil



Title: Sketchbook #4,
Untitled [leaf 100]
Date: circa 1958 - 1961
Primary Maker: H. C. (Horace
Clifford) Westermann
Medium: Black ink



Title: Sketchbook #4,
Untitled [leaf 20]
Date: circa 1958 - 1961
Primary Maker: H. C. (Horace
Clifford) Westermann
Medium: Pencil



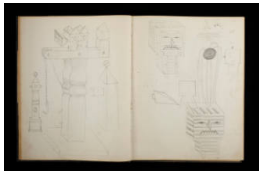
Title: Sketchbook #4,
Untitled [back cover]
Date: circa 1958 - 1961
Primary Maker: H. C. (Horace
Clifford) Westermann
Medium: Black ink



Title: Sketchbook #4,
Untitled [leaf 22]
Date: circa 1958 - 1961
Primary Maker: H. C. (Horace
Clifford) Westermann
Medium: Pencil



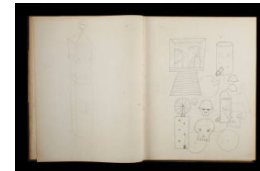
Title: Sketchbook #4,
Untitled [leaf 23]
Date: circa 1958 - 1961
Primary Maker: H. C. (Horace
Clifford) Westermann
Medium: Pencil



Title: Sketchbook #4,
Untitled [leaf 24]
Date: circa 1958 - 1961
Primary Maker: H. C. (Horace
Clifford) Westermann
Medium: Pencil



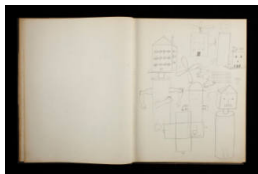
Title: Sketchbook #4,
Untitled [leaf 25]
Date: circa 1958 - 1961
Primary Maker: H. C. (Horace
Clifford) Westermann
Medium: Pencil



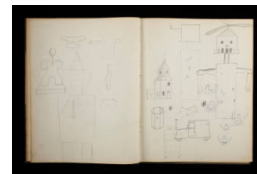
Title: Sketchbook #4,
Untitled [leaf 26]
Date: circa 1958 - 1961
Primary Maker: H. C. (Horace
Clifford) Westermann
Medium: Pencil



Title: Sketchbook #4,
Untitled [leaf 27]
Date: circa 1958 - 1961
Primary Maker: H. C. (Horace
Clifford) Westermann
Medium: Pencil



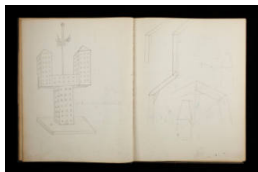
Title: Sketchbook #4,
Untitled [leaf 28]
Date: circa 1958 - 1961
Primary Maker: H. C. (Horace
Clifford) Westermann
Medium: Pencil



Title: Sketchbook #4,
Untitled [leaf 29]
Date: circa 1958 - 1961
Primary Maker: H. C. (Horace
Clifford) Westermann
Medium: Pencil, blue ink



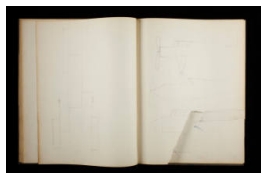
Title: Sketchbook #4,
Untitled [leaf 30]
Date: circa 1958 - 1961
Primary Maker: H. C. (Horace
Clifford) Westermann
Medium: Pencil



Title: Sketchbook #4,
Untitled [leaf 31]
Date: circa 1958 - 1961
Primary Maker: H. C. (Horace
Clifford) Westermann
Medium: Pencil



Title: Sketchbook #4,
Untitled [leaf 38]
Date: circa 1958 - 1961
Primary Maker: H. C. (Horace
Clifford) Westermann
Medium: Pencil



Title: Sketchbook #4,
Untitled [leaf 39]
Date: circa 1958 - 1961
Primary Maker: H. C. (Horace
Clifford) Westermann
Medium: Pencil



Title: Sketchbook #4,
Untitled [leaf 52]
Date: circa 1958 - 1961
Primary Maker: H. C. (Horace
Clifford) Westermann
Medium: Pencil



Title: Sketchbook #5,
Untitled [cover]
Date: circa 1961 - 1962
Primary Maker: H. C. (Horace
Clifford) Westermann
Medium: Pencil



**Title: Sketchbook #5,
Untitled**

Date: circa 1961 - 1962

Primary Maker: H. C. (Horace
Clifford) Westermann

Medium: Pencil



**Title: Sketchbook #5,
Untitled [leaf 83]**

Date: circa 1961 - 1962

Primary Maker: H. C. (Horace
Clifford) Westermann

Medium: Pencil



**Title: Sketchbook #5,
Untitled [leaf 1]**

Date: circa 1961 - 1962

Primary Maker: H. C. (Horace
Clifford) Westermann

Medium: Pencil and black ink



**Title: Sketchbook #5,
Untitled [leaf 84]**

Date: circa 1961 - 1962

Primary Maker: H. C. (Horace
Clifford) Westermann

Medium: Pencil and blue ink

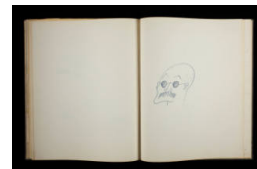


**Title: Sketchbook #5,
Untitled [leaf 6]**

Date: circa 1961 - 1962

Primary Maker: H. C. (Horace
Clifford) Westermann

Medium: Pencil



**Title: Sketchbook #5,
Untitled [leaf 87]**

Date: circa 1961 - 1962

Primary Maker: H. C. (Horace
Clifford) Westermann

Medium: Blue ink



**Title: Sketchbook #5,
Untitled [leaf 19]**

Date: circa 1961 - 1962

Primary Maker: H. C. (Horace
Clifford) Westermann

Medium: Pencil



**Title: Sketchbook #5,
Untitled [leaf 88]**

Date: circa 1961 - 1962

Primary Maker: H. C. (Horace
Clifford) Westermann

Medium: Pencil



**Title: Sketchbook #5,
Untitled [leaf 20]**

Date: circa 1961 - 1962

Primary Maker: H. C. (Horace
Clifford) Westermann

Medium: Pencil and black ink



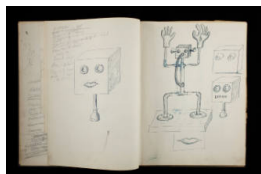
Title: Sketchbook #5,
Untitled [leaf 89]
Date: circa 1961 - 1962
Primary Maker: H. C. (Horace
Clifford) Westermann
Medium: Pencil



Title: Sketchbook #5,
Untitled [leaf 21]
Date: circa 1961 - 1962
Primary Maker: H. C. (Horace
Clifford) Westermann
Medium: Pencil, blue, and
black ink



Title: Sketchbook #5,
Untitled [leaf 90]
Date: circa 1961 - 1962
Primary Maker: H. C. (Horace
Clifford) Westermann
Medium: Pencil



Title: Sketchbook #5,
Untitled [leaf 22]
Date: circa 1961 - 1962
Primary Maker: H. C. (Horace
Clifford) Westermann
Medium: Blue and black ink



Title: Sketchbook #5,
Untitled [loose sheet]
Date: circa 1961 - 1962
Primary Maker: H. C. (Horace
Clifford) Westermann
Medium: Pencil and black ink



Title: Sketchbook #5,
Untitled [leaf 23]
Date: circa 1961 - 1962
Primary Maker: H. C. (Horace
Clifford) Westermann
Medium: Black ink



Title: Sketchbook #5,
Untitled [back cover]
Date: circa 1961 - 1962
Primary Maker: H. C. (Horace
Clifford) Westermann
Medium: Black ink



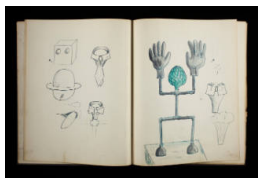
Title: Sketchbook #5,
Untitled [leaf 24]
Date: circa 1961 - 1962
Primary Maker: H. C. (Horace
Clifford) Westermann
Medium: Black ink



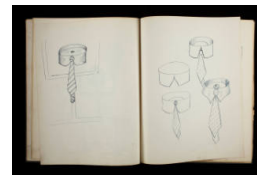
Title: Sketchbook #5,
Untitled [leaf 25]
Date: circa 1961 - 1962
Primary Maker: H. C. (Horace
Clifford) Westermann
Medium: Black ink



Title: Sketchbook #5,
Untitled [leaf 26]
Date: circa 1961 - 1962
Primary Maker: H. C. (Horace
Clifford) Westermann
Medium: Pencil and black ink



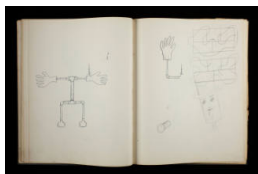
Title: Sketchbook #5,
Untitled [leaf 27]
Date: circa 1961 - 1962
Primary Maker: H. C. (Horace
Clifford) Westermann
Medium: Watercolors and
black ink



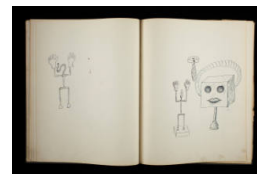
Title: Sketchbook #5,
Untitled [leaf 28]
Date: circa 1961 - 1962
Primary Maker: H. C. (Horace
Clifford) Westermann
Medium: Black ink



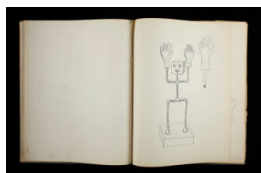
Title: Sketchbook #5,
Untitled [leaf 29]
Date: circa 1961 - 1962
Primary Maker: H. C. (Horace
Clifford) Westermann
Medium: Black ink



Title: Sketchbook #5,
Untitled [leaf 30]
Date: circa 1961 - 1962
Primary Maker: H. C. (Horace
Clifford) Westermann
Medium: Pencil and black ink



Title: Sketchbook #5,
Untitled [leaf 31]
Date: circa 1961 - 1962
Primary Maker: H. C. (Horace
Clifford) Westermann
Medium: Black ink



Title: Sketchbook #5,
Untitled [leaf 33]
Date: circa 1961 - 1962
Primary Maker: H. C. (Horace
Clifford) Westermann
Medium: Pencil, blue, and
black ink



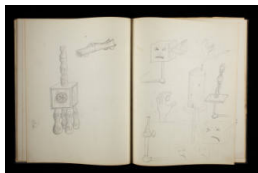
Title: Sketchbook #5,
Untitled [leaf 48]
Date: circa 1961 - 1962
Primary Maker: H. C. (Horace
Clifford) Westermann
Medium: Pencil



Title: Sketchbook #5,
Untitled [leaf 62]
Date: circa 1961 - 1962
Primary Maker: H. C. (Horace
Clifford) Westermann
Medium: Pencil



Title: Sketchbook #5,
Untitled
Date: circa 1961 - 1962
Primary Maker: H. C. (Horace Clifford) Westermann
Medium: Pencil



Title: Sketchbook #5,
Untitled [leaf 65]
Date: circa 1961 - 1962
Primary Maker: H. C. (Horace Clifford) Westermann
Medium: Pencil and black ink



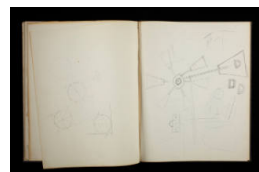
Title: Sketchbook #5,
Untitled [leaf 66]
Date: circa 1961 - 1962
Primary Maker: H. C. (Horace Clifford) Westermann
Medium: Pencil and black ink



Title: Sketchbook #5,
Untitled [leaf 73]
Date: circa 1961 - 1962
Primary Maker: H. C. (Horace Clifford) Westermann
Medium: Pencil and black ink



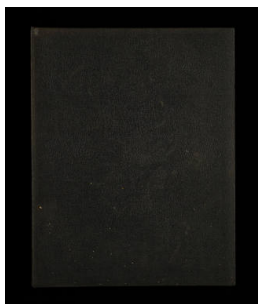
Title: Sketchbook #5,
Untitled [leaf 77]
Date: circa 1961 - 1962
Primary Maker: H. C. (Horace Clifford) Westermann
Medium: Pencil



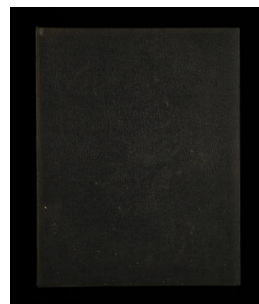
Title: Sketchbook #5,
Untitled [leaf 82]
Date: circa 1961 - 1962
Primary Maker: H. C. (Horace Clifford) Westermann
Medium: Pencil



Title: Sketchbook #5,
Untitled [leaf 82]
Date: circa 1961 - 1962
Primary Maker: H. C. (Horace Clifford) Westermann
Medium: Pencil



Title: Sketchbook #6,
Untitled [cover]
Date: circa 1962
Primary Maker: H. C. (Horace Clifford) Westermann
Medium: Pencil and black ink



Title: Sketchbook #6,
Untitled
Date: circa 1962
Primary Maker: H. C. (Horace Clifford) Westermann
Medium: Pencil and black ink



Title: Sketchbook #6,
Untitled [leaf 90]
Date: circa 1962
Primary Maker: H. C. (Horace
Clifford) Westermann
Medium: Watercolor and black
ink



Title: Sketchbook #6,
Untitled [leaf 4]
Date: circa 1962
Primary Maker: H. C. (Horace
Clifford) Westermann
Medium: Pencil



Title: Sketchbook #6,
Untitled
Date: circa 1962
Primary Maker: H. C. (Horace
Clifford) Westermann
Medium: Watercolor



Title: Sketchbook #6,
Untitled
Date: circa 1962
Primary Maker: H. C. (Horace
Clifford) Westermann
Medium: Pencil



Title: Sketchbook #6,
Untitled
Date: circa 1962
Primary Maker: H. C. (Horace
Clifford) Westermann
Medium: Watercolor



Title: Sketchbook #6,
Untitled [leaf 8]
Date: circa 1962
Primary Maker: H. C. (Horace
Clifford) Westermann
Medium: Pencil



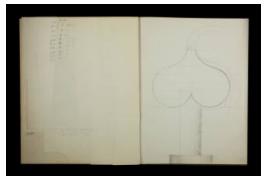
Title: Sketchbook #6,
Untitled [back cover]
Date: circa 1962
Primary Maker: H. C. (Horace
Clifford) Westermann



Title: Sketchbook #6,
Untitled [leaf 10]
Date: circa 1962
Primary Maker: H. C. (Horace
Clifford) Westermann
Medium: Pencil



Title: Sketchbook #6,
Untitled
Date: circa 1962
Primary Maker: H. C. (Horace
Clifford) Westermann
Medium: Pencil



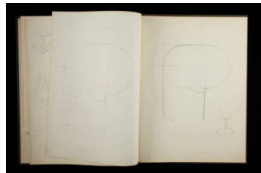
Title: Sketchbook #6,
Untitled [leaf 16]
Date: circa 1962
Primary Maker: H. C. (Horace
Clifford) Westermann
Medium: Pencil



Title: Sketchbook #6,
Untitled [leaf 20]
Date: circa 1962
Primary Maker: H. C. (Horace
Clifford) Westermann
Medium: Pencil



Title: Sketchbook #6,
Untitled [leaf 23]
Date: circa 1962
Primary Maker: H. C. (Horace
Clifford) Westermann
Medium: Pencil



Title: Sketchbook #6,
Untitled [leaf 25]
Date: circa 1962
Primary Maker: H. C. (Horace
Clifford) Westermann
Medium: Pencil



Title: Sketchbook #6,
Untitled [leaf 26]
Date: circa 1962
Primary Maker: H. C. (Horace
Clifford) Westermann
Medium: Blue ink and pencil



Title: Sketchbook #6,
Untitled [leaf 27]
Date: circa 1962
Primary Maker: H. C. (Horace
Clifford) Westermann
Medium: Pencil and watercolor



Title: Sketchbook #6,
Untitled [leaf 28]
Date: circa 1962
Primary Maker: H. C. (Horace
Clifford) Westermann
Medium: Pencil



Title: Sketchbook #6,
Untitled [leaf 29]
Date: circa 1962
Primary Maker: H. C. (Horace
Clifford) Westermann
Medium: Pencil



Title: Sketchbook #6,
Untitled [leaf 44]
Date: circa 1962
Primary Maker: H. C. (Horace
Clifford) Westermann
Medium: Blue ink



Title: Sketchbook #6,
Untitled [leaf 45]
Date: circa 1962
Primary Maker: H. C. (Horace
Clifford) Westermann
Medium: Pencil



Title: Sketchbook #6,
Untitled [leaf 48]
Date: circa 1962
Primary Maker: H. C. (Horace
Clifford) Westermann
Medium: Pencil



Title: Sketchbook #6,
Untitled [leaf 49]
Date: circa 1962
Primary Maker: H. C. (Horace
Clifford) Westermann
Medium: Pencil



Title: Sketchbook #6,
Untitled [leaf 50]
Date: circa 1962
Primary Maker: H. C. (Horace
Clifford) Westermann
Medium: Pencil



Title: Sketchbook #6,
Untitled
Date: circa 1962
Primary Maker: H. C. (Horace
Clifford) Westermann
Medium: Pencil



Title: Sketchbook #6,
Untitled
Date: circa 1962
Primary Maker: H. C. (Horace
Clifford) Westermann
Medium: Watercolor



Title: Sketchbook #6,
Untitled [leaf 61]
Date: circa 1962
Primary Maker: H. C. (Horace
Clifford) Westermann
Medium: Colored pencil and
watercolor



Title: Sketchbook #6,
Untitled
Date: circa 1962
Primary Maker: H. C. (Horace
Clifford) Westermann
Medium: Watercolor



Title: Sketchbook #6,
Untitled [leaf 78]
Date: circa 1962
Primary Maker: H. C. (Horace
Clifford) Westermann
Medium: Blue ink



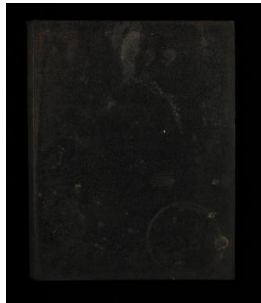
Title: Sketchbook #6,
Untitled [leaf 83]
Date: circa 1962
Primary Maker: H. C. (Horace
Clifford) Westermann
Medium: Watercolor



Title: Sketchbook #6,
Untitled [leaf 89]
Date: circa 1962
Primary Maker: H. C. (Horace
Clifford) Westermann
Medium: Watercolor



Title: Sketchbook #7,
Untitled [cover]
Date: circa 1962 - 1965
Primary Maker: H. C. (Horace
Clifford) Westermann



Title: Sketchbook #7
Date: circa 1962 - 1965
Primary Maker: H. C. (Horace
Clifford) Westermann



Title: Sketchbook #7,
Untitled [leaf 28]
Date: circa 1962 - 1965
Primary Maker: H. C. (Horace
Clifford) Westermann
Medium: Black ink



Title: Sketchbook #7,
Untitled [leaf 74]
Date: circa 1962 - 1965
Primary Maker: H. C. (Horace
Clifford) Westermann
Medium: Black ink and
watercolors



Title: Sketchbook #7,
Untitled [leaf 1]
Date: circa 1962 - 1965
Primary Maker: H. C. (Horace
Clifford) Westermann
Medium: Black and blue ink,
watercolors, and pencil



Title: Sketchbook #7,
Untitled [leaf 29]
Date: circa 1962 - 1965
Primary Maker: H. C. (Horace
Clifford) Westermann



Title: Sketchbook #7,
Untitled [leaf 75]
Date: circa 1962 - 1965
Primary Maker: H. C. (Horace
Clifford) Westermann
Medium: Black ink,
watercolors, and pencil



Title: Sketchbook #7,
Untitled [leaf 2]
Date: circa 1962 - 1965
Primary Maker: H. C. (Horace
Clifford) Westermann
Medium: Blue and red ink,
watercolor, and pencil



Title: Sketchbook #7,
Untitled [leaf 30]
Date: circa 1962 - 1965
Primary Maker: H. C. (Horace
Clifford) Westermann
Medium: Black ink



Title: Sketchbook #7,
Untitled [leaf 76]
Date: circa 1962 - 1965
Primary Maker: H. C. (Horace
Clifford) Westermann
Medium: Black ink



Title: Sketchbook #7,
Untitled [leaf 3]
Date: circa 1962 - 1965
Primary Maker: H. C. (Horace
Clifford) Westermann
Medium: Blue ink,
watercolors, and pencil



Title: Sketchbook #7,
Untitled [leaf 39]
Date: circa 1962 - 1965
Primary Maker: H. C. (Horace
Clifford) Westermann
Medium: Black ink



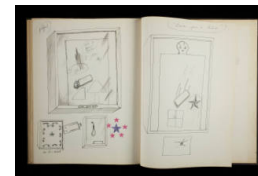
Title: Sketchbook #7,
Untitled [leaf 77]
Date: circa 1962 - 1965
Primary Maker: H. C. (Horace
Clifford) Westermann
Medium: Black ink



Title: Sketchbook #7,
Untitled
Date: circa 1962 - 1965
Primary Maker: H. C. (Horace
Clifford) Westermann
Medium: Ink



Title: Sketchbook #7,
Untitled [leaf 40]
Date: circa 1962 - 1965
Primary Maker: H. C. (Horace
Clifford) Westermann
Medium: Black ink



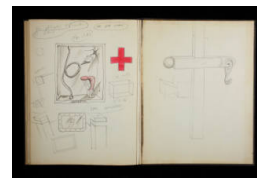
Title: Sketchbook #7,
Untitled [leaf 78]
Date: circa 1962 - 1965
Primary Maker: H. C. (Horace
Clifford) Westermann
Medium: Black ink



Title: Sketchbook #7,
Untitled [leaf 5]
Date: circa 1962 - 1965
Primary Maker: H. C. (Horace
Clifford) Westermann
Medium: Blue and black ink,
pencil, and watercolor



Title: Sketchbook #7,
Untitled [leaf 41]
Date: circa 1962 - 1965
Primary Maker: H. C. (Horace
Clifford) Westermann
Medium: Black ink



Title: Sketchbook #7,
Untitled [back cover]
Date: circa 1962 - 1965
Primary Maker: H. C. (Horace
Clifford) Westermann
Medium: Pencil



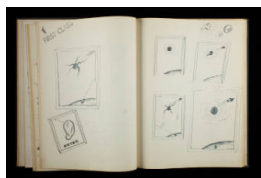
Title: Sketchbook #7,
Untitled [leaf 6]
Date: circa 1962 - 1965
Primary Maker: H. C. (Horace
Clifford) Westermann
Medium: Blue ink, pencil, and
watercolor



Title: Sketchbook #7,
Untitled [leaf 42]
Date: circa 1962 - 1965
Primary Maker: H. C. (Horace
Clifford) Westermann
Medium: Black ink



Title: Sketchbook #7,
Untitled [leaf 7]
Date: circa 1962 - 1965
Primary Maker: H. C. (Horace
Clifford) Westermann
Medium: Pencil and black and
blue ink



Title: Sketchbook #7,
Untitled [leaf 43]
Date: circa 1962 - 1965
Primary Maker: H. C. (Horace
Clifford) Westermann
Medium: Black ink



Title: Sketchbook #7,
Untitled [leaf 8]
Date: circa 1962 - 1965
Primary Maker: H. C. (Horace
Clifford) Westermann
Medium: Blue ink, pencil, and
watercolors



Title: Sketchbook #7,
Untitled [leaf 44]
Date: circa 1962 - 1965
Primary Maker: H. C. (Horace
Clifford) Westermann
Medium: Black ink



Title: Sketchbook #7,
Untitled [leaf 9]
Date: circa 1962 - 1965
Primary Maker: H. C. (Horace
Clifford) Westermann
Medium: Pencil



Title: Sketchbook #7,
Untitled [leaf 45]
Date: circa 1962 - 1965
Primary Maker: H. C. (Horace
Clifford) Westermann
Medium: Black ink



Title: Sketchbook #7,
Untitled [leaf 10]
Date: circa 1962 - 1965
Primary Maker: H. C. (Horace
Clifford) Westermann
Medium: Pencil and black ink



Title: Sketchbook #7,
Untitled [leaf 46]
Date: circa 1962 - 1965
Primary Maker: H. C. (Horace
Clifford) Westermann
Medium: Black ink



Title: Sketchbook #7,
Untitled [leaf 11]
Date: circa 1962 - 1965
Primary Maker: H. C. (Horace
Clifford) Westermann
Medium: Pencil



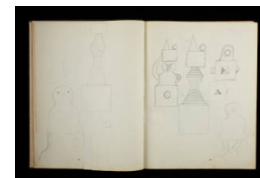
Title: Sketchbook #7,
Untitled [leaf 47]
Date: circa 1962 - 1965
Primary Maker: H. C. (Horace
Clifford) Westermann
Medium: Black ink



Title: Sketchbook #7,
Untitled [leaf 12]
Date: circa 1962 - 1965
Primary Maker: H. C. (Horace
Clifford) Westermann
Medium: Pencil



Title: Sketchbook #7,
Untitled [leaf 48]
Date: circa 1962 - 1965
Primary Maker: H. C. (Horace
Clifford) Westermann
Medium: Black ink



Title: Sketchbook #7,
Untitled [leaf 13]
Date: circa 1962 - 1965
Primary Maker: H. C. (Horace
Clifford) Westermann
Medium: Pencil and blue and
black ink



Title: Sketchbook #7,
Untitled [leaf 49]
Date: circa 1962 - 1965
Primary Maker: H. C. (Horace
Clifford) Westermann
Medium: Black ink



Title: Sketchbook #7,
Untitled [leaf 14]
Date: circa 1962 - 1965
Primary Maker: H. C. (Horace
Clifford) Westermann
Medium: Pencil and black ink



Title: Sketchbook #7,
Untitled [leaf 56]
Date: circa 1962 - 1965
Primary Maker: H. C. (Horace
Clifford) Westermann
Medium: Black ink



Title: Sketchbook #7,
Untitled [leaf 15]
Date: circa 1962 - 1965
Primary Maker: H. C. (Horace
Clifford) Westermann
Medium: Pencil and black ink



Title: Sketchbook #7,
Untitled [loose sheet]
Date: circa 1962 - 1965
Primary Maker: H. C. (Horace
Clifford) Westermann
Medium: Black ink



Title: Sketchbook #7,
Untitled [leaf 18]
Date: circa 1962 - 1965
Primary Maker: H. C. (Horace
Clifford) Westermann
Medium: Black and blue ink



Title: Sketchbook #7,
Untitled [leaf 57]
Date: circa 1962 - 1965
Primary Maker: H. C. (Horace
Clifford) Westermann
Medium: Black ink



Title: Sketchbook #7,
Untitled [leaf 19]
Date: circa 1962 - 1965
Primary Maker: H. C. (Horace
Clifford) Westermann
Medium: Black ink



Title: Sketchbook #7,
Untitled [leaf 58]
Date: circa 1962 - 1965
Primary Maker: H. C. (Horace
Clifford) Westermann
Medium: Black ink



Title: Sketchbook #7,
Untitled [leaf 20]
Date: circa 1962 - 1965
Primary Maker: H. C. (Horace
Clifford) Westermann
Medium: Black ink



Title: Sketchbook #7,
Untitled [leaf 59]
Date: circa 1962 - 1965
Primary Maker: H. C. (Horace
Clifford) Westermann
Medium: Black ink



Title: Sketchbook #7,
Untitled [leaf 21]
Date: circa 1962 - 1965
Primary Maker: H. C. (Horace
Clifford) Westermann
Medium: Black ink



Title: Sketchbook #7,
Untitled [leaf 60]
Date: circa 1962 - 1965
Primary Maker: H. C. (Horace
Clifford) Westermann
Medium: Black ink



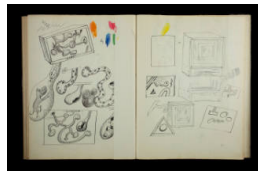
Title: Sketchbook #7,
Untitled [leaf 22]
Date: circa 1962 - 1965
Primary Maker: H. C. (Horace
Clifford) Westermann
Medium: Black and red ink



Title: Sketchbook #7,
Untitled
Date: circa 1962 - 1965
Primary Maker: H. C. (Horace
Clifford) Westermann
Medium: Black ink and
watercolor



Title: Sketchbook #7,
Untitled [leaf 23]
Date: circa 1962 - 1965
Primary Maker: H. C. (Horace
Clifford) Westermann
Medium: Black ink and pencil



Title: Sketchbook #7,
Untitled [leaf 65]
Date: circa 1962 - 1965
Primary Maker: H. C. (Horace
Clifford) Westermann
Medium: Black ink



Title: Sketchbook #7,
Untitled [leaf 24]
Date: circa 1962 - 1965
Primary Maker: H. C. (Horace
Clifford) Westermann
Medium: Black ink



Title: Sketchbook #7,
Untitled [leaf 67]
Date: circa 1962 - 1965
Primary Maker: H. C. (Horace
Clifford) Westermann
Medium: Black ink



Title: Sketchbook #7,
Untitled [leaf 25]
Date: circa 1962 - 1965
Primary Maker: H. C. (Horace
Clifford) Westermann
Medium: Black ink



Title: Sketchbook #7,
Untitled
Date: circa 1962 - 1965
Primary Maker: H. C. (Horace
Clifford) Westermann
Medium: Black ink and pencil



Title: Sketchbook #7,
Untitled [leaf 26]
Date: circa 1962 - 1965
Primary Maker: H. C. (Horace
Clifford) Westermann
Medium: Black ink



Title: Sketchbook #7,
Untitled [leaf 68]
Date: circa 1962 - 1965
Primary Maker: H. C. (Horace
Clifford) Westermann
Medium: Black ink



Title: Sketchbook #7,
Untitled [leaf 27]
Date: circa 1962 - 1965
Primary Maker: H. C. (Horace
Clifford) Westermann
Medium: Black ink



Title: Sketchbook #7,
Untitled [leaf 73]
Date: circa 1962 - 1965
Primary Maker: H. C. (Horace
Clifford) Westermann
Medium: Black ink



Title: Sketchbook #8,
Untitled [cover]
Date: circa 1963 - 1964
Primary Maker: H. C. (Horace
Clifford) Westermann
Medium: Black ink



Title: Sketchbook #8,
Untitled
Date: circa 1963 - 1964
Primary Maker: H. C. (Horace
Clifford) Westermann
Medium: Black ink



Title: Sketchbook #8,
Untitled [leaf 51]
Date: circa 1963 - 1964
Primary Maker: H. C. (Horace
Clifford) Westermann
Medium: Paper



Title: Sketchbook #8,
Untitled [leaf 1]
Date: circa 1963 - 1964
Primary Maker: H. C. (Horace
Clifford) Westermann
Medium: Black ink



Title: Sketchbook #8,
Untitled [leaf 52]
Date: circa 1963 - 1964
Primary Maker: H. C. (Horace
Clifford) Westermann



Title: Sketchbook #8,
Untitled [leaf 2]
Date: circa 1963 - 1964
Primary Maker: H. C. (Horace
Clifford) Westermann
Medium: Black ink



Title: Sketchbook #8,
Untitled [back cover]
Date: circa 1963 - 1964
Primary Maker: H. C. (Horace
Clifford) Westermann



Title: Sketchbook #8,
Untitled [leaf 10]
Date: circa 1963 - 1964
Primary Maker: H. C. (Horace
Clifford) Westermann
Medium: Black ink and pencil



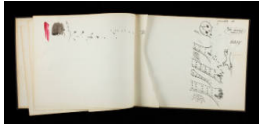
Title: Sketchbook #8,
Untitled [leaf 14]
Date: circa 1963 - 1964
Primary Maker: H. C. (Horace
Clifford) Westermann
Medium: Black ink and pencil



Title: Sketchbook #8,
Untitled [leaf 19]
Date: circa 1963 - 1964
Primary Maker: H. C. (Horace
Clifford) Westermann
Medium: Black ink and
watercolor



Title: Sketchbook #8,
Untitled [leaf 20]
Date: circa 1963 - 1964
Primary Maker: H. C. (Horace
Clifford) Westermann
Medium: Black ink



Title: Sketchbook #8,
Untitled [leaf 21]
Date: circa 1963 - 1964
Primary Maker: H. C. (Horace Clifford) Westermann
Medium: Black ink



Title: Sketchbook #8,
Untitled [leaf 22]
Date: circa 1963 - 1964
Primary Maker: H. C. (Horace Clifford) Westermann
Medium: Black ink



Title: Sketchbook #8,
Untitled [leaf 23]
Date: circa 1963 - 1964
Primary Maker: H. C. (Horace Clifford) Westermann
Medium: Black ink and watercolor



Title: Sketchbook #8,
Untitled [leaf 24]
Date: circa 1963 - 1964
Primary Maker: H. C. (Horace Clifford) Westermann
Medium: Black ink



Title: Sketchbook #8,
Untitled [leaf 25]
Date: circa 1963 - 1964
Primary Maker: H. C. (Horace Clifford) Westermann
Medium: Ink



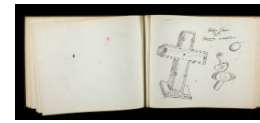
Title: Sketchbook #8,
Untitled [leaf 26]
Date: circa 1963 - 1964
Primary Maker: H. C. (Horace Clifford) Westermann
Medium: Black ink



Title: Sketchbook #8,
Untitled [leaf 27]
Date: circa 1963 - 1964
Primary Maker: H. C. (Horace Clifford) Westermann
Medium: Black ink



Title: Sketchbook #8,
Untitled [leaf 28]
Date: circa 1963 - 1964
Primary Maker: H. C. (Horace Clifford) Westermann
Medium: Black ink



Title: Sketchbook #8,
Untitled [leaf 30]
Date: circa 1963 - 1964
Primary Maker: H. C. (Horace Clifford) Westermann
Medium: Black ink



Title: Sketchbook #8,
**Untitled [loose sheet
inbetween leaf 30 and 32]**
Date: circa 1963 - 1964
Primary Maker: H. C. (Horace
Clifford) Westermann
Medium: Black ink



Title: Sketchbook #8,
Untitled [leaf 32]
Date: circa 1963 - 1964
Primary Maker: H. C. (Horace
Clifford) Westermann
Medium: Black ink



Title: Sketchbook #8,
Untitled [leaf 33]
Date: circa 1963 - 1964
Primary Maker: H. C. (Horace
Clifford) Westermann
Medium: Black ink



Title: Sketchbook #8,
Untitled [leaf 34]
Date: circa 1963 - 1964
Primary Maker: H. C. (Horace
Clifford) Westermann
Medium: Black ink



Title: Sketchbook #8,
Untitled [leaf 35]
Date: circa 1963 - 1964
Primary Maker: H. C. (Horace
Clifford) Westermann
Medium: Black ink



Title: Sketchbook #8,
Untitled [leaf 36]
Date: circa 1963 - 1964
Primary Maker: H. C. (Horace
Clifford) Westermann
Medium: Black ink and
watercolor



Title: Sketchbook #8,
Untitled [leaf 41]
Date: circa 1963 - 1964
Primary Maker: H. C. (Horace
Clifford) Westermann
Medium: Watercolor



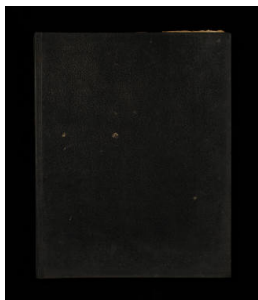
Title: Sketchbook #8,
Untitled [leaf 42]
Date: circa 1963 - 1964
Primary Maker: H. C. (Horace
Clifford) Westermann
Medium: Black ink



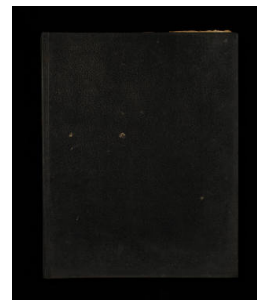
Title: Sketchbook #8,
Untitled [leaf 45]
Date: circa 1963 - 1964
Primary Maker: H. C. (Horace
Clifford) Westermann
Medium: Black ink



Title: Sketchbook #8,
Untitled [leaf 51]
Date: circa 1963 - 1964
Primary Maker: H. C. (Horace
Clifford) Westermann
Medium: Paper



Title: Sketchbook #9,
Untitled [cover]
Date: circa 1964 - 1965
Primary Maker: H. C. (Horace
Clifford) Westermann
Medium: Black ink



Title: Sketchbook #9,
Untitled
Date: circa 1964 - 1965
Primary Maker: H. C. (Horace
Clifford) Westermann
Medium: Black ink



Title: Sketchbook #9,
Untitled [leaf 49]
Date: circa 1964 - 1965
Primary Maker: H. C. (Horace
Clifford) Westermann
Medium: Black ink



Title: Sketchbook #9,
Untitled [leaf 1]
Date: circa 1964 - 1965
Primary Maker: H. C. (Horace
Clifford) Westermann
Medium: Black ink and pencil



Title: Sketchbook #9,
Untitled [leaf 50]
Date: circa 1964 - 1965
Primary Maker: H. C. (Horace
Clifford) Westermann
Medium: Black ink



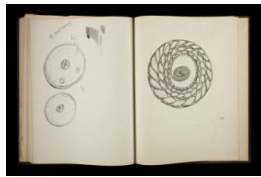
Title: Sketchbook #9,
Untitled [leaf 2]
Date: circa 1964 - 1965
Primary Maker: H. C. (Horace
Clifford) Westermann
Medium: Ink and pencil



Title: Sketchbook #9,
Untitled [leaf 51]
Date: circa 1964 - 1965
Primary Maker: H. C. (Horace
Clifford) Westermann
Medium: Black ink



Title: Sketchbook #9,
Untitled
Date: circa 1964 - 1965
Primary Maker: H. C. (Horace
Clifford) Westermann
Medium: Ink and pencil,
adhesive tape



Title: Sketchbook #9,
Untitled [leaf 53]
Date: circa 1964 - 1965
Primary Maker: H. C. (Horace
Clifford) Westermann
Medium: Black ink



Title: Sketchbook #9,
Untitled [leaf 5]
Date: circa 1964 - 1965
Primary Maker: H. C. (Horace
Clifford) Westermann
Medium: Black ink and pencil



Title: Sketchbook #9,
**Untitled [loose sheet
inbetween leaves 53 and
61]**
Date: circa 1964 - 1965
Primary Maker: H. C. (Horace
Clifford) Westermann
Medium: Black ink



Title: Sketchbook #9,
Untitled [leaf 8]
Date: circa 1964 - 1965
Primary Maker: H. C. (Horace
Clifford) Westermann
Medium: Black ink and pencil



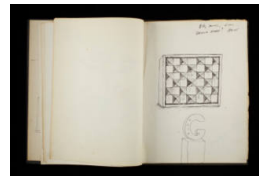
Title: Sketchbook #9,
Untitled [leaf 61]
Date: circa 1964 - 1965
Primary Maker: H. C. (Horace
Clifford) Westermann
Medium: Black ink and pencil



Title: Sketchbook #9,
Untitled [leaf 9]
Date: circa 1964 - 1965
Primary Maker: H. C. (Horace
Clifford) Westermann
Medium: Black ink and pencil



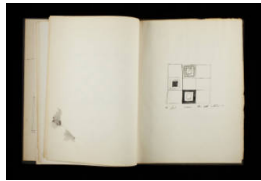
Title: Sketchbook #9,
Untitled [leaf 62]
Date: circa 1964 - 1965
Primary Maker: H. C. (Horace
Clifford) Westermann
Medium: Black ink



Title: Sketchbook #9,
Untitled [leaf 10]
Date: circa 1964 - 1965
Primary Maker: H. C. (Horace
Clifford) Westermann
Medium: Black ink and pencil



Title: Sketchbook #9,
Untitled [leaf 65]
Date: circa 1964 - 1965
Primary Maker: H. C. (Horace
Clifford) Westermann
Medium: Black ink



Title: Sketchbook #9,
Untitled [leaf 11]
Date: circa 1964 - 1965
Primary Maker: H. C. (Horace
Clifford) Westermann
Medium: Black ink



Title: Sketchbook #9,
Untitled [leaf 68]
Date: circa 1964 - 1965
Primary Maker: H. C. (Horace
Clifford) Westermann
Medium: Black ink



Title: Sketchbook #9,
Untitled [leaf 12]
Date: circa 1964 - 1965
Primary Maker: H. C. (Horace
Clifford) Westermann
Medium: Black ink and pencil



Title: Sketchbook #9,
Untitled [leaf 70]
Date: circa 1964 - 1965
Primary Maker: H. C. (Horace
Clifford) Westermann
Medium: Black ink



Title: Sketchbook #9,
Untitled [leaf 13]
Date: circa 1964 - 1965
Primary Maker: H. C. (Horace
Clifford) Westermann
Medium: Black ink



Title: Sketchbook #9,
Untitled [leaf 71]
Date: circa 1964 - 1965
Primary Maker: H. C. (Horace
Clifford) Westermann
Medium: Ink



Title: Sketchbook #9,
Untitled [leaf 14]
Date: circa 1964 - 1965
Primary Maker: H. C. (Horace
Clifford) Westermann
Medium: Black ink and pencil



Title: Sketchbook #9,
Untitled [leaf 78]
Date: circa 1964 - 1965
Primary Maker: H. C. (Horace
Clifford) Westermann
Medium: Black ink and pencil



Title: Sketchbook #9,
Untitled
Date: circa 1964 - 1965
Primary Maker: H. C. (Horace
Clifford) Westermann
Medium: Black ink, watercolor,
and pencil



Title: Sketchbook #9,
Untitled [back cover]
Date: circa 1964 - 1965
Primary Maker: H. C. (Horace Clifford) Westermann
Medium: Pencil



Title: Sketchbook #9,
Untitled [leaf 18]
Date: circa 1964 - 1965
Primary Maker: H. C. (Horace Clifford) Westermann
Medium: Black ink, watercolor, and pencil



Title: Sketchbook #9,
Untitled [leaf 19]
Date: circa 1964 - 1965
Primary Maker: H. C. (Horace Clifford) Westermann
Medium: Black ink and watercolor



Title: Sketchbook #9,
Untitled [leaf 20]
Date: circa 1964 - 1965
Primary Maker: H. C. (Horace Clifford) Westermann
Medium: Watercolor



Title: Sketchbook #9,
Untitled [leaf 21]
Date: circa 1964 - 1965
Primary Maker: H. C. (Horace Clifford) Westermann
Medium: Black ink and watercolor



Title: Sketchbook #9,
Untitled [leaf 22]
Date: circa 1964 - 1965
Primary Maker: H. C. (Horace Clifford) Westermann
Medium: Black ink and watercolor



Title: Sketchbook #9,
Untitled [leaf 26]
Date: circa 1964 - 1965
Primary Maker: H. C. (Horace Clifford) Westermann
Medium: Black ink



Title: Sketchbook #9,
Untitled [leaf 29]
Date: circa 1964 - 1965
Primary Maker: H. C. (Horace Clifford) Westermann
Medium: Black ink and watercolor



Title: Sketchbook #9,
Untitled [leaf 31]
Date: circa 1964 - 1965
Primary Maker: H. C. (Horace Clifford) Westermann
Medium: Black ink and watercolor



Title: Sketchbook #9,
Untitled [leaf 33]
Date: circa 1964 - 1965
Primary Maker: H. C. (Horace
Clifford) Westermann
Medium: Black ink



Title: Sketchbook #9,
Untitled [leaf 39]
Date: circa 1964 - 1965
Primary Maker: H. C. (Horace
Clifford) Westermann
Medium: Black ink and
watercolor



Title: Sketchbook #9,
Untitled [leaf 41]
Date: circa 1964 - 1965
Primary Maker: H. C. (Horace
Clifford) Westermann
Medium: Black ink



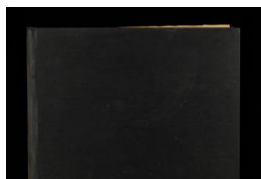
Title: Sketchbook #9,
Untitled [leaf 47]
Date: circa 1964 - 1965
Primary Maker: H. C. (Horace
Clifford) Westermann
Medium: Black ink



Title: Sketchbook #9,
Untitled [leaf 48]
Date: circa 1964 - 1965
Primary Maker: H. C. (Horace
Clifford) Westermann
Medium: Black ink and pencil



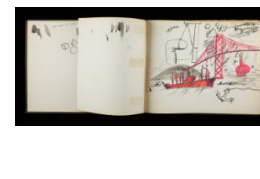
Title: Sketchbook #10,
Untitled [cover]
Date: circa 1965 - 1966
Primary Maker: H. C. (Horace
Clifford) Westermann
Medium: Black ink



Title: Sketchbook #10
Date: circa 1965 - 1966
Primary Maker: H. C. (Horace
Clifford) Westermann



Title: Sketchbook #10,
Untitled [leaf 3]
Date: circa 1965 - 1966
Primary Maker: H. C. (Horace
Clifford) Westermann
Medium: Black ink and pencil



Title: Sketchbook #10,
Untitled [leaf 9]
Date: circa 1965 - 1966
Primary Maker: H. C. (Horace
Clifford) Westermann
Medium: Black ink and salmon
watercolor



Title: Sketchbook #10,
Untitled [leaf 14]
Date: circa 1965 - 1966
Primary Maker: H. C. (Horace
Clifford) Westermann
Medium: Black ink



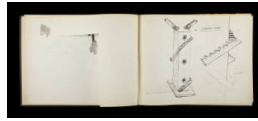
Title: Sketchbook #10,
Untitled [leaf 15]
Date: circa 1965 - 1966
Primary Maker: H. C. (Horace
Clifford) Westermann
Medium: Black ink



Title: Sketchbook #10,
Untitled [leaf 23]
Date: circa 1965 - 1966
Primary Maker: H. C. (Horace
Clifford) Westermann
Medium: Black ink



Title: Sketchbook #10,
Untitled [leaf 26]
Date: circa 1965 - 1966
Primary Maker: H. C. (Horace
Clifford) Westermann
Medium: Black and purple ink



Title: Sketchbook #10,
Untitled [leaf 27]
Date: circa 1965 - 1966
Primary Maker: H. C. (Horace
Clifford) Westermann
Medium: Black ink and pencil



Title: Sketchbook #10,
Untitled [leaf 30]
Date: circa 1965 - 1966
Primary Maker: H. C. (Horace
Clifford) Westermann
Medium: Black ink



Title: Sketchbook #10,
Untitled [leaf 31]
Date: circa 1965 - 1966
Primary Maker: H. C. (Horace
Clifford) Westermann
Medium: Black ink



Title: Sketchbook #10,
Untitled [leaf 36]
Date: circa 1965 - 1966
Primary Maker: H. C. (Horace
Clifford) Westermann
Medium: Black ink



Title: Sketchbook #10,
Untitled [leaf 37]
Date: circa 1965 - 1966
Primary Maker: H. C. (Horace
Clifford) Westermann
Medium: Black ink and
watercolor



Title: Sketchbook #10,
Untitled [leaf 43]
Date: circa 1965 - 1966
Primary Maker: H. C. (Horace
Clifford) Westermann
Medium: Black ink



Title: Sketchbook #10,
Untitled [leaf 44]
Date: circa 1965 - 1966
Primary Maker: H. C. (Horace
Clifford) Westermann
Medium: Black ink



Title: Sketchbook #10,
Untitled [leaf 45]
Date: circa 1965 - 1966
Primary Maker: H. C. (Horace
Clifford) Westermann
Medium: Black ink and pencil



Title: Sketchbook #10,
Untitled [leaf 49]
Date: circa 1965 - 1966
Primary Maker: H. C. (Horace
Clifford) Westermann
Medium: Black and blue ink,
watercolor



Title: Sketchbook #10,
Untitled [leaf 55]
Date: circa 1965 - 1966
Primary Maker: H. C. (Horace
Clifford) Westermann
Medium: Black ink



Title: Sketchbook #10,
Untitled [leaf 58]
Date: circa 1965 - 1966
Primary Maker: H. C. (Horace
Clifford) Westermann
Medium: Black ink and
watercolor



Title: Sketchbook #10,
**Untitled [sheet paper-
clipped to leaf 58]**
Date: circa 1965 - 1966
Primary Maker: H. C. (Horace
Clifford) Westermann
Medium: Black ink and
watercolor



Title: Sketchbook #10,
Untitled [leaf 61]
Date: circa 1965 - 1966
Primary Maker: H. C. (Horace
Clifford) Westermann
Medium: Black and red ink
and pencil



Title: Sketchbook #10,
Untitled [leaf 71]
Date: circa 1965 - 1966
Primary Maker: H. C. (Horace
Clifford) Westermann
Medium: Black and blue ink,
watercolor testing



Title: Sketchbook #10,
Untitled [leaf 78]
Date: circa 1965 - 1966
Primary Maker: H. C. (Horace
Clifford) Westermann
Medium: Black and blue ink



Title: Sketchbook #10,
Untitled [leaf 81]
Date: circa 1965 - 1966
Primary Maker: H. C. (Horace
Clifford) Westermann
Medium: Black ink and pencil



Title: Sketchbook #10,
Untitled [back cover]
Date: circa 1965 - 1966
Primary Maker: H. C. (Horace
Clifford) Westermann



Title: Sketchbook #11,
Untitled [cover]
Date: circa 1966 - 1967
Primary Maker: H. C. (Horace
Clifford) Westermann
Medium: Black ink



Title: Sketchbook #11
Date: circa 1966 - 1967
Primary Maker: H. C. (Horace
Clifford) Westermann



Title: Sketchbook #11,
Untitled [leaf 76]
Date: circa 1966 - 1967
Primary Maker: H. C. (Horace
Clifford) Westermann



Title: Sketchbook #11,
Untitled
Date: circa 1966 - 1967
Primary Maker: H. C. (Horace
Clifford) Westermann
Medium: Black ink



Title: Sketchbook #11,
Untitled [leaf 1]
Date: circa 1966 - 1967
Primary Maker: H. C. (Horace
Clifford) Westermann
Medium: Black and blue ink



Title: Sketchbook #11,
Untitled [leaf 77]
Date: circa 1966 - 1967
Primary Maker: H. C. (Horace
Clifford) Westermann
Medium: Black ink



Title: Sketchbook #11,
Untitled [back cover]
Date: circa 1966 - 1967
Primary Maker: H. C. (Horace Clifford) Westermann
Medium: Black ink



Title: Sketchbook #11,
Untitled [leaf 5]
Date: circa 1966 - 1967
Primary Maker: H. C. (Horace Clifford) Westermann
Medium: Black ink



Title: Sketchbook #11,
Untitled [leaf 79]
Date: circa 1966 - 1967
Primary Maker: H. C. (Horace Clifford) Westermann
Medium: Black ink



Title: Sketchbook #11,
Untitled [leaf 10]
Date: circa 1966 - 1967
Primary Maker: H. C. (Horace Clifford) Westermann
Medium: Black ink



Title: Sketchbook #11,
Untitled
Date: circa 1966 - 1967
Primary Maker: H. C. (Horace Clifford) Westermann
Medium: Black ink



Title: Sketchbook #11,
Untitled [leaf 12]
Date: circa 1966 - 1967
Primary Maker: H. C. (Horace Clifford) Westermann
Medium: Black ink and pencil



Title: Sketchbook #11,
Untitled [leaf 13]
Date: circa 1966 - 1967
Primary Maker: H. C. (Horace Clifford) Westermann
Medium: Ink



Title: Sketchbook #11,
Untitled [leaf 14]
Date: circa 1966 - 1967
Primary Maker: H. C. (Horace Clifford) Westermann
Medium: Black ink and pencil



Title: Sketchbook #11,
Untitled [leaf 16]
Date: circa 1966 - 1967
Primary Maker: H. C. (Horace Clifford) Westermann
Medium: Black ink



Title: Sketchbook #11,
Untitled [leaf 17]
Date: circa 1966 - 1967
Primary Maker: H. C. (Horace
Clifford) Westermann
Medium: Red marker



Title: Sketchbook #11,
Untitled [leaf 19]
Date: circa 1966 - 1967
Primary Maker: H. C. (Horace
Clifford) Westermann
Medium: Black ink



Title: Sketchbook #11,
Untitled [leaf 20]
Date: circa 1966 - 1967
Primary Maker: H. C. (Horace
Clifford) Westermann
Medium: Black ink



Title: Sketchbook #11,
Untitled [leaf 21]
Date: circa 1966 - 1967
Primary Maker: H. C. (Horace
Clifford) Westermann
Medium: Black ink and
watercolor



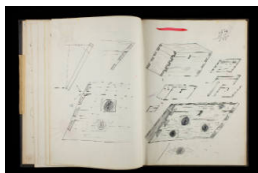
Title: Sketchbook #11,
Untitled [leaf 22]
Date: circa 1966 - 1967
Primary Maker: H. C. (Horace
Clifford) Westermann
Medium: Black and red ink



Title: Sketchbook #11,
Untitled [leaf 26]
Date: circa 1966 - 1967
Primary Maker: H. C. (Horace
Clifford) Westermann
Medium: Black ink



Title: Sketchbook #11,
Untitled [leaf 31]
Date: circa 1966 - 1967
Primary Maker: H. C. (Horace
Clifford) Westermann
Medium: Black ink and
watercolor



Title: Sketchbook #11,
Untitled [leaf 32]
Date: circa 1966 - 1967
Primary Maker: H. C. (Horace
Clifford) Westermann
Medium: Black ink



Title: Sketchbook #11,
Untitled [leaf 34]
Date: circa 1966 - 1967
Primary Maker: H. C. (Horace
Clifford) Westermann
Medium: Black and red ink
and watercolor



Title: Sketchbook #11,
Untitled [leaf 35]
Date: circa 1966 - 1967
Primary Maker: H. C. (Horace
Clifford) Westermann
Medium: Red ink and paint



Title: Sketchbook #11,
Untitled
Date: circa 1966 - 1967
Primary Maker: H. C. (Horace
Clifford) Westermann
Medium: Ink and pencil



Title: Sketchbook #11,
Untitled [leaf 41]
Date: circa 1966 - 1967
Primary Maker: H. C. (Horace
Clifford) Westermann
Medium: Black and red ink
and watercolor



Title: Sketchbook #11,
Untitled [leaf 45]
Date: circa 1966 - 1967
Primary Maker: H. C. (Horace
Clifford) Westermann
Medium: Black ink, pencil, and
watercolor



Title: Sketchbook #11,
Untitled [leaf 49]
Date: circa 1966 - 1967
Primary Maker: H. C. (Horace
Clifford) Westermann
Medium: Black ink



Title: Sketchbook #11,
Untitled [leaf 51]
Date: circa 1966 - 1967
Primary Maker: H. C. (Horace
Clifford) Westermann
Medium: Black ink and
watercolors



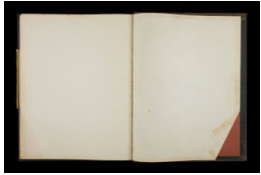
Title: Sketchbook #11,
Untitled [leaf 56]
Date: circa 1966 - 1967
Primary Maker: H. C. (Horace
Clifford) Westermann
Medium: Black ink



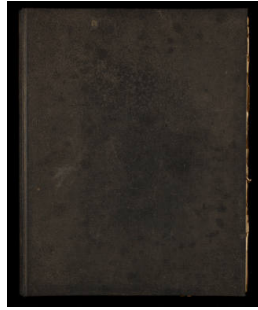
Title: Sketchbook #11,
Untitled [leaf 70]
Date: circa 1966 - 1967
Primary Maker: H. C. (Horace
Clifford) Westermann
Medium: Black ink



Title: Sketchbook #11,
Untitled [leaf 75]
Date: circa 1966 - 1967
Primary Maker: H. C. (Horace
Clifford) Westermann
Medium: Black ink



Title: Sketchbook #11,
Untitled
Date: circa 1966 - 1967
Primary Maker: H. C. (Horace
Clifford) Westermann
Medium: Black ink



Title: Sketchbook #12,
Untitled [cover]
Date: circa 1967 - 1968
Primary Maker: H. C. (Horace
Clifford) Westermann
Medium: Black ink, pencil, and
watercolor



Title: Sketchbook #12,
Untitled
Date: circa 1967 - 1968
Primary Maker: H. C. (Horace
Clifford) Westermann
Medium: Black ink, pencil, and
watercolor



Title: Sketchbook #12,
Untitled [leaf 61]
Date: circa 1967 - 1968
Primary Maker: H. C. (Horace
Clifford) Westermann
Medium: Black and red ink



Title: Sketchbook #12,
Untitled [leaf 1]
Date: circa 1967 - 1968
Primary Maker: H. C. (Horace
Clifford) Westermann
Medium: Ink, colored pencils,
and watercolor



Title: Sketchbook #12,
Untitled [leaf 62]
Date: circa 1967 - 1968
Primary Maker: H. C. (Horace
Clifford) Westermann
Medium: Watercolor



Title: Sketchbook #12,
Untitled [leaf 27]
Date: circa 1967 - 1968
Primary Maker: H. C. (Horace
Clifford) Westermann
Medium: Black ink and
watercolor



Title: Sketchbook #12,
Untitled [leaf 73]
Date: circa 1967 - 1968
Primary Maker: H. C. (Horace
Clifford) Westermann
Medium: Black and blue ink



Title: Sketchbook #12,
Untitled [leaf 28]
Date: circa 1967 - 1968
Primary Maker: H. C. (Horace
Clifford) Westermann
Medium: Black and blue ink,
pencil, and watercolors



Title: Sketchbook #12,
Untitled [leaf 78]
Date: circa 1967 - 1968
Primary Maker: H. C. (Horace
Clifford) Westermann
Medium: Black ink



Title: Sketchbook #12,
Untitled [leaf 29]
Date: circa 1967 - 1968
Primary Maker: H. C. (Horace
Clifford) Westermann
Medium: Black ink and
watercolor



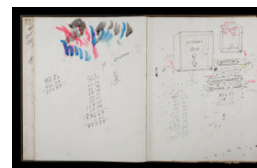
Title: Sketchbook #12,
Untitled [leaf 79]
Date: circa 1967 - 1968
Primary Maker: H. C. (Horace
Clifford) Westermann
Medium: Black ink



Title: Sketchbook #12,
Untitled [leaf 30]
Date: circa 1967 - 1968
Primary Maker: H. C. (Horace
Clifford) Westermann
Medium: Black and blue ink
and watercolor



Title: Sketchbook #12,
Untitled [leaf 80]
Date: circa 1967 - 1968
Primary Maker: H. C. (Horace
Clifford) Westermann
Medium: Black ink and
watercolor



Title: Sketchbook #12,
Untitled [leaf 31]
Date: circa 1967 - 1968
Primary Maker: H. C. (Horace
Clifford) Westermann
Medium: Black and blue ink



Title: Sketchbook #12,
**Untitled [loose sheet
inbetween leaves 80 and
84]**
Date: circa 1967 - 1968
Primary Maker: H. C. (Horace
Clifford) Westermann
Medium: Blue and red ink



Title: Sketchbook #12,
Untitled [leaf 33]
Date: circa 1967 - 1968
Primary Maker: H. C. (Horace
Clifford) Westermann
Medium: Black and red ink



Title: Sketchbook #12,
Untitled [leaf 84]
Date: circa 1967 - 1968
Primary Maker: H. C. (Horace
Clifford) Westermann
Medium: Red ink



Title: Sketchbook #12,
Untitled
Date: circa 1967 - 1968
Primary Maker: H. C. (Horace
Clifford) Westermann
Medium: Black ink



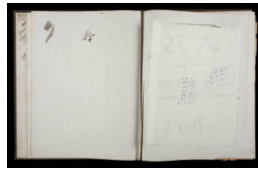
Title: Sketchbook #12,
Untitled [leaf 89]
Date: circa 1967 - 1968
Primary Maker: H. C. (Horace
Clifford) Westermann
Medium: Black and blue ink



Title: Sketchbook #12,
Untitled [leaf 34]
Date: circa 1967 - 1968
Primary Maker: H. C. (Horace
Clifford) Westermann
Medium: Black ink



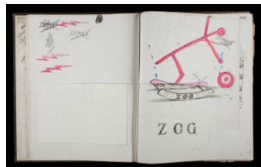
Title: Sketchbook #12,
Untitled [back cover]
Date: circa 1967 - 1968
Primary Maker: H. C. (Horace
Clifford) Westermann
Medium: Blue ink



Title: Sketchbook #12,
Untitled
Date: circa 1967 - 1968
Primary Maker: H. C. (Horace
Clifford) Westermann
Medium: Blue ink



Title: Sketchbook #12,
Untitled [leaf 35]
Date: circa 1967 - 1968
Primary Maker: H. C. (Horace
Clifford) Westermann
Medium: Black and red ink
and watercolors



Title: Sketchbook #12,
Untitled [leaf 36]
Date: circa 1967 - 1968
Primary Maker: H. C. (Horace
Clifford) Westermann
Medium: Black and blue ink
and watercolor



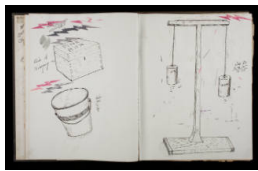
Title: Sketchbook #12,
Untitled [leaf 37]
Date: circa 1967 - 1968
Primary Maker: H. C. (Horace
Clifford) Westermann
Medium: Black ink and
watercolor



Title: Sketchbook #12,
Untitled [leaf 38]
Date: circa 1967 - 1968
Primary Maker: H. C. (Horace
Clifford) Westermann
Medium: Black ink



Title: Sketchbook #12,
Untitled [leaf 39]
Date: circa 1967 - 1968
Primary Maker: H. C. (Horace Clifford) Westermann
Medium: Black ink



Title: Sketchbook #12,
Untitled [leaf 40]
Date: circa 1967 - 1968
Primary Maker: H. C. (Horace Clifford) Westermann
Medium: Ink and watercolor



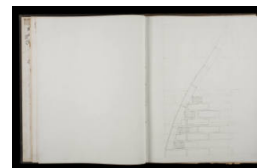
Title: Sketchbook #12,
Untitled [leaf 42]
Date: circa 1967 - 1968
Primary Maker: H. C. (Horace Clifford) Westermann
Medium: Ink and pencil



Title: Sketchbook #12,
Untitled [leaf 47]
Date: circa 1967 - 1968
Primary Maker: H. C. (Horace Clifford) Westermann
Medium: Pencil



Title: Sketchbook #12,
Untitled [leaf 48]
Date: circa 1967 - 1968
Primary Maker: H. C. (Horace Clifford) Westermann
Medium: Black ink and pencil



Title: Sketchbook #12,
Untitled [leaf 49]
Date: circa 1967 - 1968
Primary Maker: H. C. (Horace Clifford) Westermann
Medium: Blue ink and pencil



Title: Sketchbook #12,
Untitled [leaf 50]
Date: circa 1967 - 1968
Primary Maker: H. C. (Horace Clifford) Westermann
Medium: Pencil



Title: Sketchbook #12,
Untitled [leaf 51]
Date: circa 1967 - 1968
Primary Maker: H. C. (Horace Clifford) Westermann
Medium: Black ink



Title: Sketchbook #12,
Untitled [leaf 53]
Date: circa 1967 - 1968
Primary Maker: H. C. (Horace Clifford) Westermann
Medium: Black ink



Title: Sketchbook #12,
Untitled [leaf 54]
Date: circa 1967 - 1968
Primary Maker: H. C. (Horace
Clifford) Westermann
Medium: Black and blue ink



Title: Sketchbook #12,
Untitled [leaf 58]
Date: circa 1967 - 1968
Primary Maker: H. C. (Horace
Clifford) Westermann
Medium: Black and red ink



Title: Sketchbook #13,
Untitled [cover]
Date: circa 1968
Primary Maker: H. C. (Horace
Clifford) Westermann
Medium: Blue ink and pencil



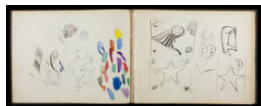
Title: Sketchbook #13,
Untitled
Date: circa 1968
Primary Maker: H. C. (Horace
Clifford) Westermann
Medium: Blue ink and pencil



Title: Sketchbook #13,
**Untitled [loose sheet
inbetween cover and
leaf 1]**
Date: circa 1968
Primary Maker: H. C. (Horace
Clifford) Westermann
Medium: Black ink



Title: Sketchbook #13,
Untitled [leaf 1]
Date: circa 1968
Primary Maker: H. C. (Horace
Clifford) Westermann
Medium: Black and blue ink
and watercolor



Title: Sketchbook #13,
Untitled [leaf 27]
Date: circa 1968
Primary Maker: H. C. (Horace
Clifford) Westermann
Medium: Black ink and pencil



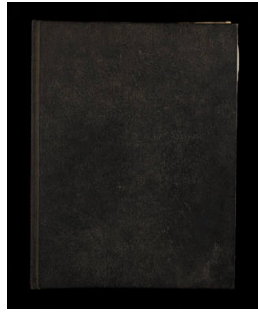
Title: Sketchbook #13,
Untitled [leaf 64]
Date: circa 1968
Primary Maker: H. C. (Horace
Clifford) Westermann
Medium: Pencil



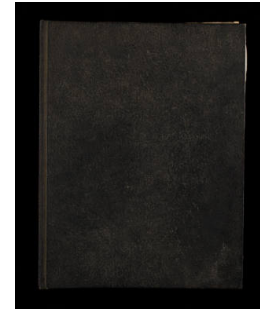
Title: Sketchbook #13,
Untitled [leaf 65]
Date: circa 1968
Primary Maker: H. C. (Horace
Clifford) Westermann
Medium: Black ink



Title: Sketchbook #13,
Untitled [back cover]
Date: circa 1968
Primary Maker: H. C. (Horace Clifford) Westermann



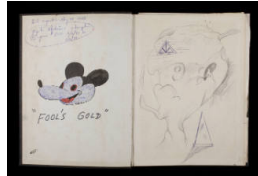
Title: Sketchbook #14,
Untitled [cover]
Date: circa 1968 - 1975
Primary Maker: H. C. (Horace Clifford) Westermann
Medium: Black, blue and red ink



Title: Sketchbook #14
Date: circa 1968 - 1975
Primary Maker: H. C. (Horace Clifford) Westermann
Medium: Various ink



Title: Sketchbook #14,
Untitled [leaf 87]
Date: circa 1968 - 1975
Primary Maker: H. C. (Horace Clifford) Westermann
Medium: Blue and black ink



Title: Sketchbook #14,
Untitled [leaf 4]
Date: circa 1968 - 1975
Primary Maker: H. C. (Horace Clifford) Westermann
Medium: Blue ink and pencil



Title: Sketchbook #14,
Untitled [leaf 88]
Date: circa 1968 - 1975
Primary Maker: H. C. (Horace Clifford) Westermann
Medium: Blue ink and watercolor



Title: Sketchbook #14,
Untitled [leaf 5]
Date: circa 1968 - 1975
Primary Maker: H. C. (Horace Clifford) Westermann
Medium: Blue ink



Title: Sketchbook #14,
Untitled [leaf 89]
Date: circa 1968 - 1975
Primary Maker: H. C. (Horace Clifford) Westermann
Medium: Blue ink and yellow ink (marker?)



Title: Sketchbook #14,
Untitled [leaf 6]
Date: circa 1968 - 1975
Primary Maker: H. C. (Horace Clifford) Westermann
Medium: Blue ink



Title: Sketchbook #14,
Untitled [leaf 90]
Date: circa 1968 - 1975
Primary Maker: H. C. (Horace
Clifford) Westermann
Medium: Blue ink and black ink



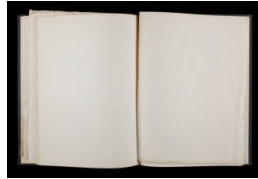
Title: Sketchbook #14,
Untitled [leaf 7]
Date: circa 1968 - 1975
Primary Maker: H. C. (Horace
Clifford) Westermann
Medium: Blue ink



Title: Sketchbook #14,
Untitled [leaf 91]
Date: circa 1968 - 1975
Primary Maker: H. C. (Horace
Clifford) Westermann
Medium: Blue ink and black ink



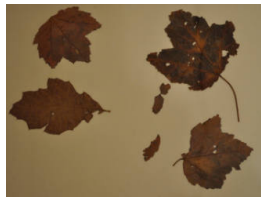
Title: Sketchbook #14,
Untitled [leaf 8]
Date: circa 1968 - 1975
Primary Maker: H. C. (Horace
Clifford) Westermann
Medium: Blue ink



Title: Sketchbook #14,
Untitled [leaf 96]
Date: circa 1968 - 1975
Primary Maker: H. C. (Horace
Clifford) Westermann
Medium: Blue ink



Title: Sketchbook #14,
Untitled [leaf 9]
Date: circa 1968 - 1975
Primary Maker: H. C. (Horace
Clifford) Westermann
Medium: Blue ink



Title: Sketchbook #14,
**Untitled [inbetween
leaves 96 and 97]**
Date: circa 1968 - 1975
Primary Maker: H. C. (Horace
Clifford) Westermann
Medium: Dried tree leaves



Title: Sketchbook #14,
Untitled [leaf 10]
Date: circa 1968 - 1975
Primary Maker: H. C. (Horace
Clifford) Westermann
Medium: Watercolor



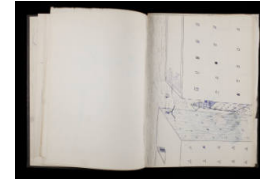
Title: Sketchbook #14,
Untitled [leaf 11]
Date: circa 1968 - 1975
Primary Maker: H. C. (Horace
Clifford) Westermann
Medium: Blue ink



Title: Sketchbook #14,
Untitled [leaf 26]
Date: circa 1968 - 1975
Primary Maker: H. C. (Horace
Clifford) Westermann
Medium: Blue ink



Title: Sketchbook #14,
Untitled [leaf 27]
Date: circa 1968 - 1975
Primary Maker: H. C. (Horace
Clifford) Westermann
Medium: Blue and black ink



Title: Sketchbook #14,
Untitled [leaf 32]
Date: circa 1968 - 1975
Primary Maker: H. C. (Horace
Clifford) Westermann
Medium: Blue ink and
watercolor



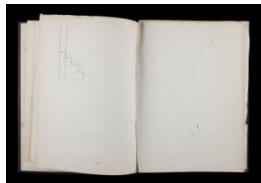
Title: Sketchbook #14,
Untitled [leaf 33]
Date: circa 1968 - 1975
Primary Maker: H. C. (Horace
Clifford) Westermann
Medium: Blue ink



Title: Sketchbook #14,
Untitled [leaf 34]
Date: circa 1968 - 1975
Primary Maker: H. C. (Horace
Clifford) Westermann
Medium: Blue and black ink



Title: Sketchbook #14,
Untitled [leaf 97]
Date: circa 1968 - 1975
Primary Maker: H. C. (Horace
Clifford) Westermann
Medium: Blue ink



Title: Sketchbook #14,
Untitled [leaf 40]
Date: circa 1968 - 1975
Primary Maker: H. C. (Horace
Clifford) Westermann



Title: Sketchbook #14,
Untitled [leaf 98]
Date: circa 1968 - 1975
Primary Maker: H. C. (Horace
Clifford) Westermann
Medium: Black ink and
watercolor



Title: Sketchbook #14,
Untitled [leaf 50]
Date: circa 1968 - 1975
Primary Maker: H. C. (Horace
Clifford) Westermann
Medium: Blue ink



Title: Sketchbook #14,
Untitled [leaf 103]
Date: circa 1968 - 1975
Primary Maker: H. C. (Horace
Clifford) Westermann
Medium: Black ink



Title: Sketchbook #14,
Untitled [leaf 60]
Date: circa 1968 - 1975
Primary Maker: H. C. (Horace
Clifford) Westermann
Medium: Pencil



Title: Sketchbook #14,
Untitled [leaf 104]
Date: circa 1968 - 1975
Primary Maker: H. C. (Horace
Clifford) Westermann
Medium: Black ink



Title: Sketchbook #14,
Untitled [leaf 65]
Date: circa 1968 - 1975
Primary Maker: H. C. (Horace
Clifford) Westermann
Medium: Blue ink



Title: Sketchbook #14,
Untitled [leaf 105]
Date: circa 1968 - 1975
Primary Maker: H. C. (Horace
Clifford) Westermann



Title: Sketchbook #14,
Untitled [leaf 76]
Date: circa 1968 - 1975
Primary Maker: H. C. (Horace
Clifford) Westermann
Medium: Blue ink



Title: Sketchbook #14,
Untitled [back cover]
Date: circa 1968 - 1975
Primary Maker: H. C. (Horace
Clifford) Westermann
Medium: Blue ink



Title: Sketchbook #14,
Untitled
Date: circa 1968 - 1975
Primary Maker: H. C. (Horace
Clifford) Westermann



Title: Sketchbook #14,
Untitled [leaf 77]
Date: circa 1968 - 1975
Primary Maker: H. C. (Horace
Clifford) Westermann
Medium: Blue ink



Title: Sketchbook #14,
Untitled [leaf 78]
Date: circa 1968 - 1975
Primary Maker: H. C. (Horace
Clifford) Westermann
Medium: Blue ink



Title: Sketchbook #14,
Untitled [leaf 79]
Date: circa 1968 - 1975
Primary Maker: H. C. (Horace
Clifford) Westermann
Medium: Blue ink and
watercolor



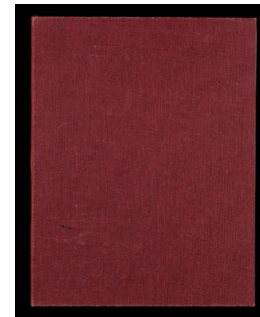
Title: Sketchbook #14,
Untitled [leaf 83]
Date: circa 1968 - 1975
Primary Maker: H. C. (Horace
Clifford) Westermann
Medium: Blue ink and
watercolor



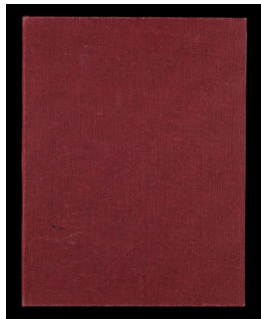
Title: Sketchbook #14,
Untitled [leaf 84]
Date: circa 1968 - 1975
Primary Maker: H. C. (Horace
Clifford) Westermann
Medium: Blue ink and
watercolor



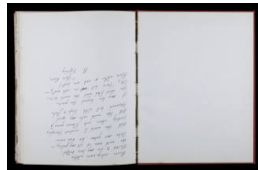
Title: Sketchbook #14,
Untitled [leaf 86]
Date: circa 1968 - 1975
Primary Maker: H. C. (Horace
Clifford) Westermann
Medium: Blue ink and
watercolor



Title: Sketchbook #17,
Untitled [cover]
Date: circa 1977 - 1981
Primary Maker: H. C. (Horace
Clifford) Westermann
Medium: Black ink



Title: Sketchbook #17
Date: circa 1977 - 1981
Primary Maker: H. C. (Horace
Clifford) Westermann
Medium: Black, blue and red
ink, pencil and watercolor on
paper



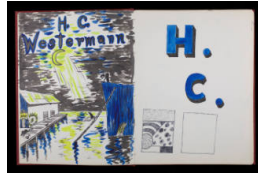
Title: Sketchbook #17,
Untitled [leaf 32]
Date: circa 1977 - 1981
Primary Maker: H. C. (Horace
Clifford) Westermann
Medium: Black ink



Title: Sketchbook #17,
Untitled [leaf 1]
Date: circa 1977 - 1981
Primary Maker: H. C. (Horace
Clifford) Westermann
Medium: Black ink and
watercolor



Title: Sketchbook #17,
Untitled [leaf 33]
Date: circa 1977 - 1981
Primary Maker: H. C. (Horace
Clifford) Westermann
Medium: Black and blue ink,
tape



Title: Sketchbook #17,
Untitled [leaf 2]
Date: circa 1977 - 1981
Primary Maker: H. C. (Horace
Clifford) Westermann
Medium: Black ink and
watercolor



Title: Sketchbook #17,
Untitled [leaf 33]
Date: circa 1977 - 1981
Primary Maker: H. C. (Horace
Clifford) Westermann
Medium: Black and blue ink



Title: Sketchbook #17,
Untitled [leaf 4]
Date: circa 1977 - 1981
Primary Maker: H. C. (Horace
Clifford) Westermann
Medium: Black ink



Title: Sketchbook #17,
Untitled [leaf 34]
Date: circa 1977 - 1981
Primary Maker: H. C. (Horace
Clifford) Westermann
Medium: Black and blue ink



Title: Sketchbook #17,
Untitled [leaf 5]
Date: circa 1977 - 1981
Primary Maker: H. C. (Horace
Clifford) Westermann
Medium: Black ink



Title: Sketchbook #17,
Untitled [leaf 35]
Date: circa 1977 - 1981
Primary Maker: H. C. (Horace
Clifford) Westermann
Medium: Black ink



Title: Sketchbook #17,
Untitled [leaf 6]
Date: circa 1977 - 1981
Primary Maker: H. C. (Horace
Clifford) Westermann
Medium: Black ink



Title: Sketchbook #17,
Untitled [leaf 36]
Date: circa 1977 - 1981
Primary Maker: H. C. (Horace
Clifford) Westermann
Medium: Black and blue ink



Title: Sketchbook #17,
Untitled [leaf 7]
Date: circa 1977 - 1981
Primary Maker: H. C. (Horace
Clifford) Westermann
Medium: Black and blue ink



Title: Sketchbook #17,
Untitled [back cover]
Date: circa 1977 - 1981
Primary Maker: H. C. (Horace
Clifford) Westermann
Medium: Black ink and
watercolors



Title: Sketchbook #17,
Untitled [leaf 8]
Date: circa 1977 - 1981
Primary Maker: H. C. (Horace
Clifford) Westermann
Medium: Black ink and pencil



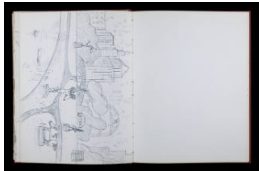
Title: Sketchbook #17,
Untitled [leaf 9]
Date: circa 1977 - 1981
Primary Maker: H. C. (Horace
Clifford) Westermann
Medium: Black ink



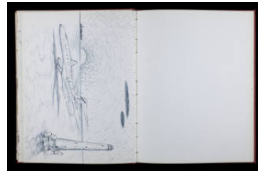
Title: Sketchbook #17,
Untitled [leaf 10]
Date: circa 1977 - 1981
Primary Maker: H. C. (Horace
Clifford) Westermann
Medium: Black ink



Title: Sketchbook #17,
Untitled [leaf 11]
Date: circa 1977 - 1981
Primary Maker: H. C. (Horace
Clifford) Westermann
Medium: Black ink



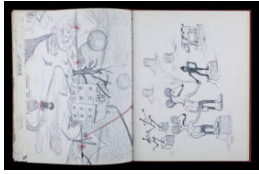
Title: Sketchbook #17,
Untitled [leaf 12]
Date: circa 1977 - 1981
Primary Maker: H. C. (Horace
Clifford) Westermann
Medium: Black ink



Title: Sketchbook #17,
Untitled [leaf 13]
Date: circa 1977 - 1981
Primary Maker: H. C. (Horace
Clifford) Westermann
Medium: Black ink



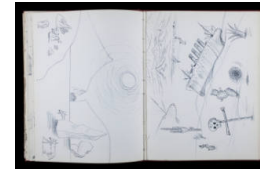
Title: Sketchbook #17,
Untitled [leaf 14]
Date: circa 1977 - 1981
Primary Maker: H. C. (Horace
Clifford) Westermann
Medium: Black and red ink
and watercolor



Title: Sketchbook #17,
Untitled [leaf 15]
Date: circa 1977 - 1981
Primary Maker: H. C. (Horace
Clifford) Westermann
Medium: Black and red ink



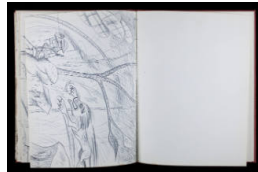
Title: Sketchbook #17,
Untitled [leaf 16]
Date: circa 1977 - 1981
Primary Maker: H. C. (Horace
Clifford) Westermann
Medium: Black ink



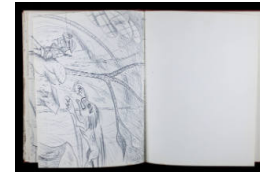
Title: Sketchbook #17,
Untitled [leaf 20]
Date: circa 1977 - 1981
Primary Maker: H. C. (Horace
Clifford) Westermann
Medium: Black and red ink



Title: Sketchbook #17,
Untitled [leaf 21]
Date: circa 1977 - 1981
Primary Maker: H. C. (Horace
Clifford) Westermann
Medium: Black and red ink



Title: Sketchbook #17,
Untitled [leaf 23]
Date: circa 1977 - 1981
Primary Maker: H. C. (Horace
Clifford) Westermann
Medium: Black ink



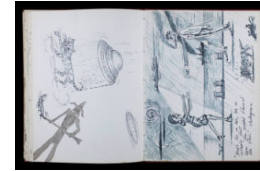
Title: Sketchbook #17,
Untitled [leaf 24]
Date: circa 1977 - 1981
Primary Maker: H. C. (Horace
Clifford) Westermann
Medium: Black ink



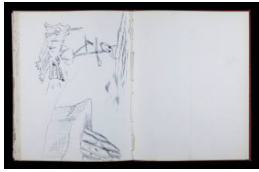
Title: Sketchbook #17,
Untitled [leaf 25]
Date: circa 1977 - 1981
Primary Maker: H. C. (Horace
Clifford) Westermann
Medium: Black ink and
watercolors



Title: Sketchbook #17,
Untitled [leaf 26]
Date: circa 1977 - 1981
Primary Maker: H. C. (Horace
Clifford) Westermann
Medium: Black ink and
watercolor



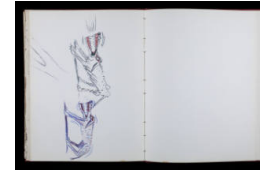
Title: Sketchbook #17,
Untitled [leaf 27]
Date: circa 1977 - 1981
Primary Maker: H. C. (Horace
Clifford) Westermann
Medium: Black ink



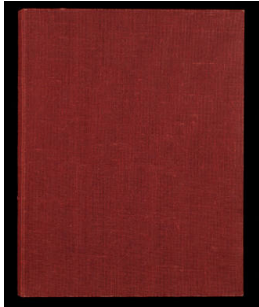
Title: Sketchbook #17,
Untitled [leaf 29]
Date: circa 1977 - 1981
Primary Maker: H. C. (Horace
Clifford) Westermann
Medium: Black ink



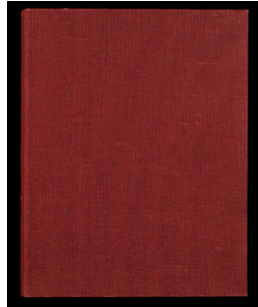
Title: Sketchbook #17,
Untitled [leaf 30]
Date: circa 1977 - 1981
Primary Maker: H. C. (Horace
Clifford) Westermann
Medium: Black, blue and red
ink



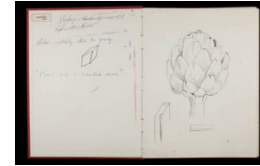
Title: Sketchbook #17,
Untitled [leaf 31]
Date: circa 1977 - 1981
Primary Maker: H. C. (Horace
Clifford) Westermann
Medium: Black ink



Title: Sketchbook #16,
Untitled [cover]
Date: circa 1976 - 1977
Primary Maker: H. C. (Horace
Clifford) Westermann
Medium: Black ink



Title: Sketchbook #16,
Untitled
Date: circa 1976 - 1977
Primary Maker: H. C. (Horace
Clifford) Westermann
Medium: Black ink



Title: Sketchbook #16,
Untitled [leaf 1]
Date: circa 1976 - 1977
Primary Maker: H. C. (Horace
Clifford) Westermann
Medium: Black ink



Title: Sketchbook #16,
Untitled [leaf 2]
Date: circa 1976 - 1977
Primary Maker: H. C. (Horace
Clifford) Westermann
Medium: Black ink



Title: Sketchbook #16,
Untitled [leaf 3]
Date: circa 1976 - 1977
Primary Maker: H. C. (Horace
Clifford) Westermann
Medium: Black and red ink



Title: Sketchbook #16,
Untitled [leaf 4]
Date: circa 1976 - 1977
Primary Maker: H. C. (Horace
Clifford) Westermann
Medium: Black ink and
watercolor



Title: Sketchbook #16,
Untitled [leaf 10]
Date: circa 1976 - 1977
Primary Maker: H. C. (Horace
Clifford) Westermann
Medium: Black ink



Title: Sketchbook #16,
Untitled [leaf 12]
Date: circa 1976 - 1977
Primary Maker: H. C. (Horace
Clifford) Westermann
Medium: Black ink



Title: Sketchbook #16,
Untitled [leaf 15]
Date: circa 1976 - 1977
Primary Maker: H. C. (Horace
Clifford) Westermann
Medium: Black ink and
watercolor



Title: Sketchbook #16,
Untitled [leaf 16]
Date: circa 1976 - 1977
Primary Maker: H. C. (Horace
Clifford) Westermann
Medium: Black ink



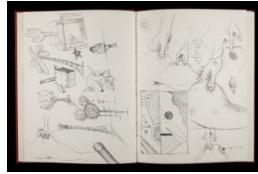
Title: Sketchbook #16,
Untitled [leaf 18]
Date: circa 1976 - 1977
Primary Maker: H. C. (Horace
Clifford) Westermann
Medium: Black ink



Title: Sketchbook #16,
Untitled [leaf 19]
Date: circa 1976 - 1977
Primary Maker: H. C. (Horace
Clifford) Westermann
Medium: Black, red and green
ink



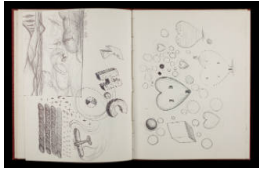
Title: Sketchbook #16,
Untitled [leaf 20]
Date: circa 1976 - 1977
Primary Maker: H. C. (Horace
Clifford) Westermann
Medium: Black ink



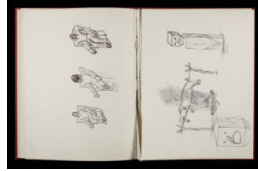
Title: Sketchbook #16,
Untitled [leaf 21]
Date: circa 1976 - 1977
Primary Maker: H. C. (Horace
Clifford) Westermann
Medium: Black ink



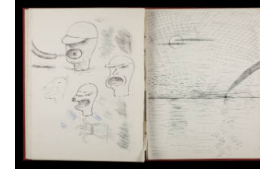
Title: Sketchbook #16,
Untitled [leaf 23]
Date: circa 1976 - 1977
Primary Maker: H. C. (Horace
Clifford) Westermann
Medium: Black ink



Title: Sketchbook #16,
Untitled [leaf 24]
Date: circa 1976 - 1977
Primary Maker: H. C. (Horace Clifford) Westermann
Medium: Black ink and watercolor



Title: Sketchbook #16,
Untitled [loose leaf between leaves 24 and 35]
Date: circa 1976 - 1977
Primary Maker: H. C. (Horace Clifford) Westermann
Medium: Black ink and pencil



Title: Sketchbook #16,
Untitled [leaf 35]
Date: circa 1976 - 1977
Primary Maker: H. C. (Horace Clifford) Westermann
Medium: Black ink



Title: Sketchbook #16,
Untitled [loose sheet inbetween leaf 36 and back cover]
Date: circa 1976 - 1977
Primary Maker: H. C. (Horace Clifford) Westermann
Medium: Black ink



Title: Sketchbook #16,
Untitled [back cover]
Date: circa 1976 - 1977
Primary Maker: H. C. (Horace Clifford) Westermann
Medium: Black ink



Title: Study for Port of Shadows
Date: probably 1967
Primary Maker: H. C. (Horace Clifford) Westermann
Medium: Pen and ink on wove paper



Title: Untitled (Slickly Poo: Mr. Clean and Hunchback man with a dagger)
Date: 1963 - 1967
Primary Maker: H. C. (Horace Clifford) Westermann
Medium: Watercolor on wove paper



Title: Untitled (two part hunting scene)
Date: 1978
Primary Maker: H. C. (Horace Clifford) Westermann
Medium: Ink and wash on wove paper



Title: Untitled (two part hunting scene)
Date: 1978
Primary Maker: H. C. (Horace Clifford) Westermann
Medium: Ink and wash on wove paper

**Title: Letter Drawing:
Untitled ("Dear Allan:
HELP!!!")**

Date: 29 July 1963

Primary Maker: H. C. (Horace Clifford) Westermann

Medium: Letter drawing:
watercolor, ink, and
commercial ink stamps on
wove paper

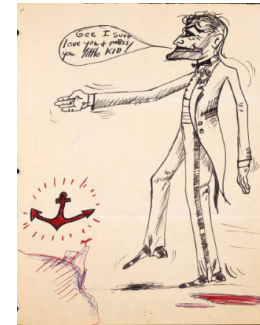


**Title: Letter Drawing:
Untitled (Dear Jean:
"thanks")**

Date: 10 April 1964

Primary Maker: H. C. (Horace Clifford) Westermann

Medium: Letter drawing:
watercolor, ink, commercial ink
stamps, and collage elements
on wove paper



**Title: Gee, I Sure Love
You and Miss You Little
Kid**

Date: 1922 - 1981

Primary Maker: H. C. (Horace Clifford) Westermann

Medium: Ink and watercolor
on wove paper



Title: I Love You!!

Date: 1922 - 1981

Primary Maker: H. C. (Horace Clifford) Westermann

Medium: Ink and watercolor
on wove paper



**Title: Happy Birthday
Joanna**

Date: 1966

Primary Maker: H. C. (Horace Clifford) Westermann

Medium: Ink and watercolor
on wove paper

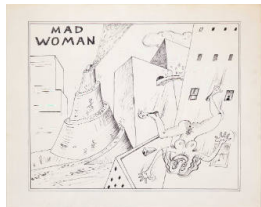


**Title: Study for the Color
Lithograph: "See
America First: Untitled
#13"**

Date: 1968

Primary Maker: H. C. (Horace Clifford) Westermann

Medium: Preparatory drawing,
pen and ink and watercolor
(yellow) on wove paper,
gridded for transfer

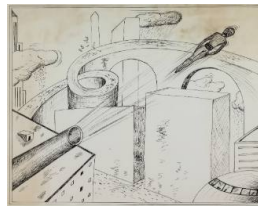


**Title: Preparation
drawing for Mad Woman**

Date: circa 1971

Primary Maker: H. C. (Horace Clifford) Westermann

Medium: Pen and ink on wove
paper

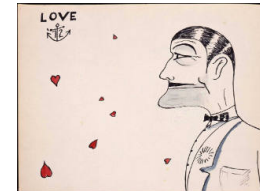


**Title: Preparation
drawing for Human
Cannonball**

Date: circa 1971

Primary Maker: H. C. (Horace Clifford) Westermann

Medium: Pen and ink on wove
paper



Title: Love (self-portrait)

Date: 1972

Primary Maker: H. C. (Horace Clifford) Westermann

Medium: Ink and watercolor
on wove paper



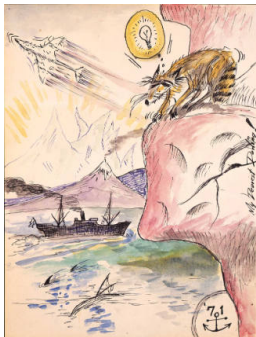
Title: Baja (For Joanna)
Date: 1973
Primary Maker: H. C. (Horace Clifford) Westermann
Medium: Ink and watercolor on wove paper



Title: Good Morning
Date: 1973
Primary Maker: H. C. (Horace Clifford) Westermann
Medium: Ink and watercolor on wove paper



Title: Untitled (Man on a Deserted Island)
Date: 1973
Primary Maker: H. C. (Horace Clifford) Westermann
Medium: Ink and watercolor on wove paper



Title: My Dearest Darling
Date: 1971
Primary Maker: H. C. (Horace Clifford) Westermann
Medium: Pen, ink, and water on wove paper



Title: Honey Happy Birthday
Date: 1974
Primary Maker: H. C. (Horace Clifford) Westermann
Medium: Ink and watercolor on wove paper



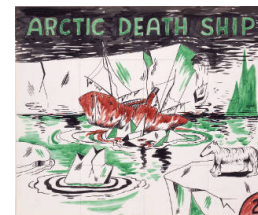
Title: The Gift of the Big Red Rose
Date: 1975
Primary Maker: H. C. (Horace Clifford) Westermann
Medium: Ink and watercolor on wove paper



Title: Study for The Connecticut Ballroom: The Green Hell
Date: 1975
Primary Maker: H. C. (Horace Clifford) Westermann
Medium: Pen, brush, ink, and watercolor on wove paper



Title: Preparation drawing for The Connecticut Ballroom: The Green Hell
Date: 1975
Primary Maker: H. C. (Horace Clifford) Westermann
Medium: Pen and ink and watercolor on Green Retree thick wove paper with deckled edges



Title: Study for The Connecticut Ballroom: Arctic Death Ship
Date: n.d.
Primary Maker: H. C. (Horace Clifford) Westermann
Medium: Pen and ink and watercolor on wove paper, gridded in pencil for transfer



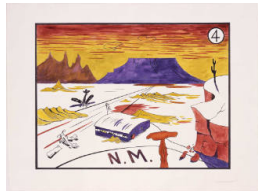
Title: Preparation drawing for The Connecticut Ballroom: Arctic Death Ship
Date: n.d.
Primary Maker: H. C. (Horace Clifford) Westermann
Medium: Pen and ink and watercolor on Green Retree thick wove paper with deckled edges



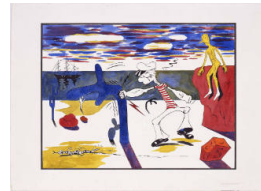
Title: Study for The Connecticut Ballroom: Dance of Death
Date: 1922 - 1981
Primary Maker: H. C. (Horace Clifford) Westermann
Medium: Pen and ink and watercolor on wove paper, gridded in pencil for transfer



Title: Preparation drawing for The Connecticut Ballroom: Dance of Death
Date: n.d.
Primary Maker: H. C. (Horace Clifford) Westermann
Medium: Pen and ink and watercolor on Green Retree thick wove paper with deckled edges



Title: Preparation drawing for The Connecticut Ballroom: Deserted Airport N.M.
Date: n.d.
Primary Maker: H. C. (Horace Clifford) Westermann
Medium: Pen and ink and watercolor on Green Retree thick wove paper with deckled edges



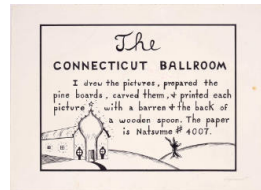
Title: Preparation drawing for The Connecticut Ballroom: Popeye and Pinocchio
Date: n.d.
Primary Maker: H. C. (Horace Clifford) Westermann
Medium: Pen and ink and watercolor on Green Retree thick wove paper with deckled edges



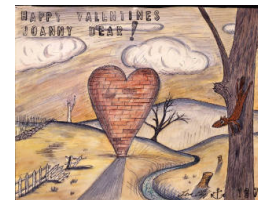
Title: Preparation drawing for The Connecticut Ballroom: Elephants' Graveyard
Date: 1975
Primary Maker: H. C. (Horace Clifford) Westermann
Medium: Pen and ink on Green Retree thick wove paper with deckled edges



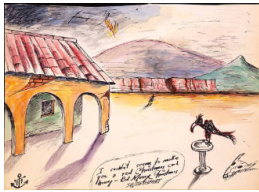
Title: Study for The Connecticut Ballroom: Title/Colophon Page
Date: 13 January 1976
Primary Maker: H. C. (Horace Clifford) Westermann
Medium: Black ball-point pen on wove paper



Title: Preparation drawing for The Connecticut Ballroom: Title/Colophon Page
Date: 1922 - 1981
Primary Maker: H. C. (Horace Clifford) Westermann
Medium: Pen and ink with pencil ruling on thick wove paper



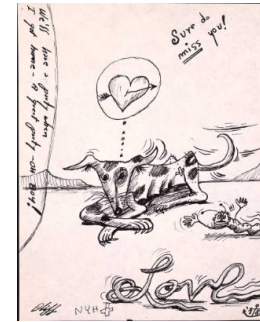
Title: Happy Valentines Joanny Dear!
Date: 1977
Primary Maker: H. C. (Horace Clifford) Westermann
Medium: Ink and watercolor on thick wove paper



Title: Untitled (Christmas)
Date: 1971
Primary Maker: H. C. (Horace Clifford) Westermann
Medium: Ink and watercolor on wove paper



Title: Lililnonah (Happy Birthday Joanny Dear!)
Date: 1978
Primary Maker: H. C. (Horace Clifford) Westermann
Medium: Ink and watercolor on wove paper



Title: Sure Do Miss You
Date: 1978
Primary Maker: H. C. (Horace Clifford) Westermann
Medium: Ink on wove paper



Title: Happy Valentines Dearest One
Date: 1981
Primary Maker: H. C. (Horace Clifford) Westermann
Medium: Ink and watercolor and thumbprints on stiff wove paper



Title: Yeah, I Sure Love You, Yeah
Date: 1972
Primary Maker: H. C. (Horace Clifford) Westermann
Medium: Ink and watercolor on wove paper



Title: See America First: Untitled #7 (See America First VIII)
Date: 24 September - 7 October 1968
Primary Maker: H. C. (Horace Clifford) Westermann
Medium: Four-color lithograph (yellow, pink, blue, black) on German Etching with torn and deckled edges

Title: Designs--Pacific Ancient World--Chinese--Penn.Dutch--Persian [Sketchbook #2, Leaves 80-97]
Date: circa 1952 - 1954
Primary Maker: H. C. (Horace Clifford) Westermann

Title: Designs--Pacific Ancient World--Chinese--Penn.Dutch--Persian [Sketchbook #2, Leaves 80-97]
Date: circa 1952 - 1954
Primary Maker: H. C. (Horace Clifford) Westermann

Title: Designs--Pacific Ancient World--Chinese--Penn.Dutch--Persian [Sketchbook #2, Leaves 80-97]
Date: circa 1952 - 1954
Primary Maker: H. C. (Horace Clifford) Westermann

**Title: Designs--Pacific
Ancient World--Chinese--
Penn.Dutch--Persian
[Sketchbook #2, Leaves
80-97]**

Date: circa 1952 - 1954

Primary Maker: H. C. (Horace
Clifford) Westermann

**Title: Designs--Pacific
Ancient World--Chinese--
Penn.Dutch--Persian
[Sketchbook #2, Leaves
80-97]**

Date: circa 1952 - 1954

Primary Maker: H. C. (Horace
Clifford) Westermann

**Title: Designs--Pacific
Ancient World--Chinese--
Penn.Dutch--Persian
[Sketchbook #2, Leaves
80-97]**

Date: circa 1952 - 1954

Primary Maker: H. C. (Horace
Clifford) Westermann

**Title: Designs--Pacific
Ancient World--Chinese--
Penn.Dutch--Persian
[Sketchbook #2, Leaves
80-97]**

Date: circa 1952 - 1954

Primary Maker: H. C. (Horace
Clifford) Westermann

**Title: Designs--Pacific
Ancient World--Chinese--
Penn.Dutch--Persian
[Sketchbook #2, Leaves
80-97]**

Date: circa 1952 - 1954

Primary Maker: H. C. (Horace
Clifford) Westermann

**Title: Designs--Pacific
Ancient World--Chinese--
Penn.Dutch--Persian
[Sketchbook #2, Leaves
80-97]**

Date: circa 1952 - 1954

Primary Maker: H. C. (Horace
Clifford) Westermann

**Title: Designs--Pacific
Ancient World--Chinese--
Penn.Dutch--Persian
[Sketchbook #2, Leaves
80-97]**

Date: circa 1952 - 1954

Primary Maker: H. C. (Horace
Clifford) Westermann

**Title: Designs--Pacific
Ancient World--Chinese--
Penn.Dutch--Persian
[Sketchbook #2, Leaves
80-97]**

Date: circa 1952 - 1954

Primary Maker: H. C. (Horace
Clifford) Westermann

**Title: Designs--Pacific
Ancient World--Chinese--
Penn.Dutch--Persian
[Sketchbook #2, Leaves
80-97]**

Date: circa 1952 - 1954

Primary Maker: H. C. (Horace
Clifford) Westermann

**Title: Designs--Pacific
Ancient World--Chinese--
Penn.Dutch--Persian
[Sketchbook #2, Leaves
80-97]**

Date: circa 1952 - 1954

Primary Maker: H. C. (Horace
Clifford) Westermann

**Title: Designs--Pacific
Ancient World--Chinese--
Penn.Dutch--Persian
[Sketchbook #2, Leaves
80-97]**

Date: circa 1952 - 1954

Primary Maker: H. C. (Horace
Clifford) Westermann

**Title: Designs--Pacific
Ancient World--Chinese--
Penn.Dutch--Persian
[Sketchbook #2, Leaves
80-97]**

Date: circa 1952 - 1954

Primary Maker: H. C. (Horace
Clifford) Westermann

**Title: Designs--Pacific
Ancient World--Chinese--
Penn.Dutch--Persian
[Sketchbook #2, Leaves
80-97]**

Date: circa 1952 - 1954

Primary Maker: H. C. (Horace
Clifford) Westermann

**Title: Art Institute, H. C.
Westermann
[Sketchbook #3, leaves
89-91]**

Date: circa 1952 - 1954

Primary Maker: H. C. (Horace
Clifford) Westermann

Medium: Pencil

**Title: Sketchbook #11,
Untitled**

Date: circa 1966 - 1967

Primary Maker: H. C. (Horace
Clifford) Westermann

Medium: Black ink

**Title: Sketchbook #11,
Untitled**

Date: circa 1966 - 1967

Primary Maker: H. C. (Horace
Clifford) Westermann

Medium: Black ink

**Title: Sketchbook #11,
Untitled**

Date: circa 1966 - 1967

Primary Maker: H. C. (Horace
Clifford) Westermann

Medium: Black ink

**Title: Sketchbook #11,
Untitled**

Date: circa 1966 - 1967

Primary Maker: H. C. (Horace
Clifford) Westermann

Medium: Black ink

**Title: Sketchbook #11,
Untitled**
Date: circa 1966 - 1967
Primary Maker: H. C. (Horace
Clifford) Westermann
Medium: Black ink

**Title: Sketchbook #11,
Untitled**
Date: circa 1966 - 1967
Primary Maker: H. C. (Horace
Clifford) Westermann
Medium: Black ink

**Title: Sketchbook #11,
Untitled**
Date: circa 1966 - 1967
Primary Maker: H. C. (Horace
Clifford) Westermann
Medium: Black ink

**Title: Sketchbook #11,
Untitled**
Date: circa 1966 - 1967
Primary Maker: H. C. (Horace
Clifford) Westermann
Medium: Black ink

**Title: Sketchbook #11,
Untitled**
Date: circa 1966 - 1967
Primary Maker: H. C. (Horace
Clifford) Westermann
Medium: Black ink

**Title: Sketchbook #11,
Untitled**
Date: circa 1966 - 1967
Primary Maker: H. C. (Horace
Clifford) Westermann
Medium: Black ink

**Title: Sketchbook #11,
Untitled**
Date: circa 1966 - 1967
Primary Maker: H. C. (Horace
Clifford) Westermann
Medium: Black ink

**Title: Sketchbook #11,
Untitled**
Date: circa 1966 - 1967
Primary Maker: H. C. (Horace
Clifford) Westermann
Medium: Black ink

**Title: Sketchbook #11,
Untitled**
Date: circa 1966 - 1967
Primary Maker: H. C. (Horace
Clifford) Westermann
Medium: Black ink

Title: Sketchbook #11, Untitled
Date: circa 1966 - 1967
Primary Maker: H. C. (Horace Clifford) Westermann
Medium: Black ink

Title: Sketchbook #11, Untitled
Date: circa 1966 - 1967
Primary Maker: H. C. (Horace Clifford) Westermann
Medium: Black ink

Title: Sketchbook #11, Untitled
Date: circa 1966 - 1967
Primary Maker: H. C. (Horace Clifford) Westermann
Medium: Black ink

Title: Sketchbook #11, Untitled
Date: circa 1966 - 1967
Primary Maker: H. C. (Horace Clifford) Westermann
Medium: Black ink

Title: Sketchbook #11, Untitled
Date: circa 1966 - 1967
Primary Maker: H. C. (Horace Clifford) Westermann
Medium: Black ink

Title: Sketchbook #11, Untitled
Date: circa 1966 - 1967
Primary Maker: H. C. (Horace Clifford) Westermann
Medium: Black ink

Title: Sketchbook #11, Untitled
Date: circa 1966 - 1967
Primary Maker: H. C. (Horace Clifford) Westermann
Medium: Black ink

Title: Sketchbook #11, Untitled
Date: circa 1966 - 1967
Primary Maker: H. C. (Horace Clifford) Westermann
Medium: Black ink



Title: 1945
Date: 1978
Primary Maker: H. C. (Horace Clifford) Westermann
Medium: Pen, ink, and watercolor on wove paper



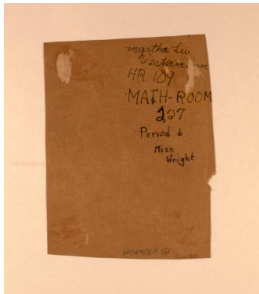
Title: The Dog House
Date: 1930s
Primary Maker: H. C. (Horace Clifford) Westermann
Medium: Pen and ink on paper



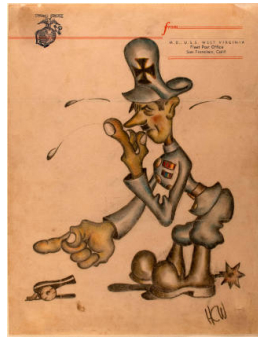
Title: Hawg Jaws
Date: 1940s
Primary Maker: H. C. (Horace Clifford) Westermann
Medium: Pencil on paper



Title: Come on men - let's all re-enlist in the Corps
Date: 1940s
Primary Maker: H. C. (Horace Clifford) Westermann
Medium: Pen and ink on paper



Title: The Hammock
Date: 1940s
Primary Maker: H. C. (Horace Clifford) Westermann
Medium: Pencil on brown paper



Title: Hitler
Date: 1940s
Primary Maker: H. C. (Horace Clifford) Westermann
Medium: Stationary, pencil and pastel on paper



Title: C.S. Watch 10:30
Date: 1940s
Primary Maker: H. C. (Horace Clifford) Westermann
Medium: Pencil on paper



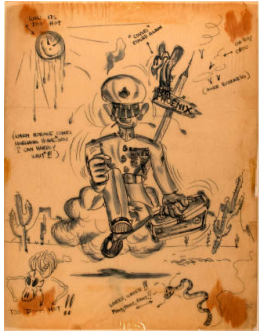
Title: Admiral Toejo!
Date: 1940s
Primary Maker: H. C. (Horace Clifford) Westermann
Medium: Pencil on paper



Title: The Ole Man
Date: 1940s
Primary Maker: H. C. (Horace Clifford) Westermann
Medium: Pencil on Marine Corps stationary



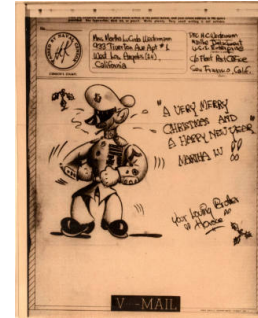
Title: Your Fighting Marine, Horace
Date: 1940s
Primary Maker: H. C. (Horace Clifford) Westermann
Medium: Pencil on USO paper



Title: When Horace comes marching home
Date: 1940s
Primary Maker: H. C. (Horace Clifford) Westermann
Medium: Ink on onion skin



Title: For Lulu
Date: 1942
Primary Maker: H. C. (Horace Clifford) Westermann
Medium: Pencil on Marine Corps stationary



Title: A very merry Christmas
Date: 1943
Primary Maker: H. C. (Horace Clifford) Westermann
Medium: V-mail sketch on paper



Title: Sudden Air Attack - U.S.S. Enterprise
Date: 1945
Primary Maker: H. C. (Horace Clifford) Westermann
Medium: Pen and ink on red-bordered paper



Title: Post War Plans
Date: 1945
Primary Maker: H. C. (Horace Clifford) Westermann
Medium: Pen and ink on paper



Title: Strength, Balance, Beauty - Wayne & Westermann
Date: 1946
Primary Maker: H. C. (Horace Clifford) Westermann
Medium: Pen, ink and color on paper



Title: Happy Fathers Day
Date: 1949
Primary Maker: H. C. (Horace Clifford) Westermann
Medium: Ink and watercolor Father's Day card



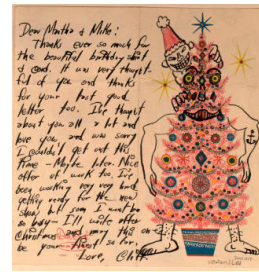
Title: Letter From Korea
Date: 1952
Primary Maker: H. C. (Horace Clifford) Westermann
Medium: Colored sketch, 3-fold letter



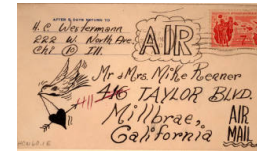
Title: Christmas Card
Date: 1954
Primary Maker: H. C. (Horace Clifford) Westermann
Medium: Drawing and note on card



Title: Father's Day Card
Date: 1955
Primary Maker: H. C. (Horace Clifford) Westermann
Medium: Pen and ink on cardboard



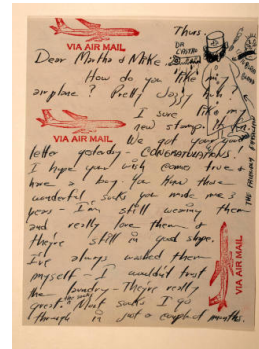
Title: Embellished Christmas Card with Note
Date: n.d.
Primary Maker: H. C. (Horace Clifford) Westermann
Medium: Pen and ink on card



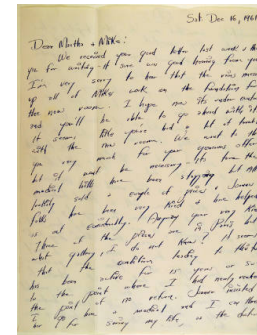
Title: Embellished Envelopes
Date: 1960
Primary Maker: H. C. (Horace Clifford) Westermann
Medium: Pen and ink



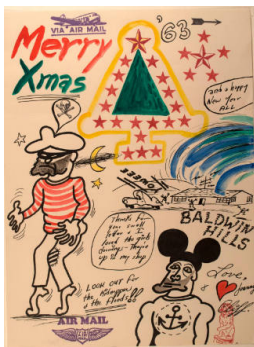
Title: New Year Card
Date: 1961
Primary Maker: H. C. (Horace Clifford) Westermann
Medium: Pen, ink and watercolor on cardboard with antique card attached and cut out lithograph of a baby



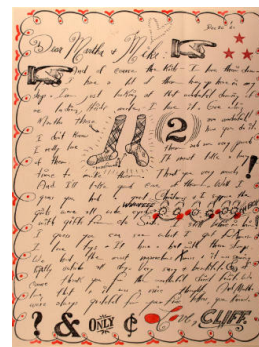
Title: Letter with Illustration of "Dr. Castro"
Date: 1961
Primary Maker: H. C. (Horace Clifford) Westermann
Medium: Stamped all over with his new air mail stamp and letter



Title: Illustrated Letter
Date: 1961
Primary Maker: H. C. (Horace Clifford) Westermann
Medium: Ink and watercolor



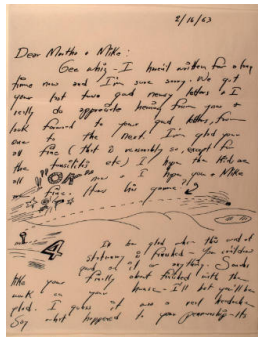
Title: Christmas Greeting
Date: 1962
Primary Maker: H. C. (Horace Clifford) Westermann
Medium: Pen and ink with rubber stamps artist received for Christmas -- Watercolor



Title: Thank You Letter and Drawing
Date: 1962
Primary Maker: H. C. (Horace Clifford) Westermann
Medium: Pen and ink with rubber stamps



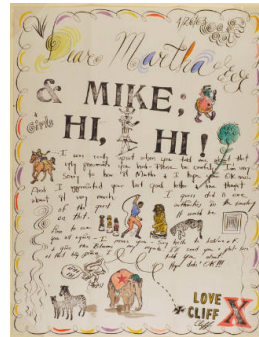
Title: Valentine with Sketches of Cliff and Joanna
Date: n.d.
Primary Maker: H. C. (Horace Clifford) Westermann
Medium: Purchased valentine with ink sketches



Title: Letter

Date: 16 January 1963

Primary Maker: H. C. (Horace Clifford) Westermann

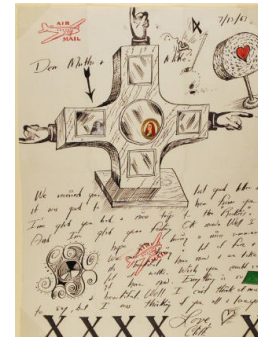


Title: Get Well Note

Date: 1963

Primary Maker: H. C. (Horace Clifford) Westermann

Medium: Illustrated, stamped, painted and embellished

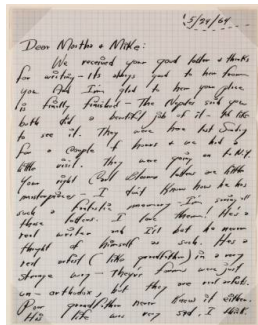


Title: XXXXX with my photograph and also a picture from a cigar band

Date: 1963

Primary Maker: H. C. (Horace Clifford) Westermann

Medium: Illustrated, stamped, painted letter



Title: Letter

Date: 25 May 1964

Primary Maker: H. C. (Horace Clifford) Westermann

Medium: Painted and ink

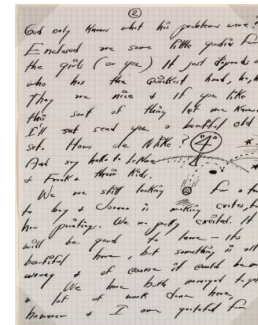


Title: Letter

Date: 25 May 1964

Primary Maker: H. C. (Horace Clifford) Westermann

Medium: Painted and ink

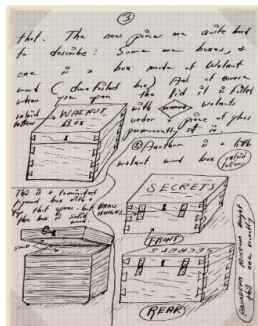


Title: Letter

Date: 25 May 1964

Primary Maker: H. C. (Horace Clifford) Westermann

Medium: Painted and ink

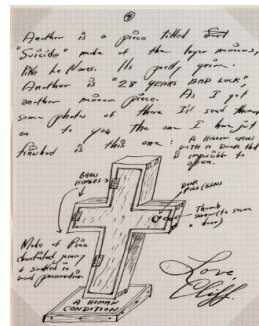


Title: Letter

Date: 25 May 1964

Primary Maker: H. C. (Horace Clifford) Westermann

Medium: Painted and ink

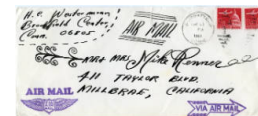


Title: Letter

Date: 25 May 1964

Primary Maker: H. C. (Horace Clifford) Westermann

Medium: Painted and ink



Title: Envelope

Date: 25 May 1964

Primary Maker: H. C. (Horace Clifford) Westermann

Medium: Paper, ink.



Title: Letter
Date: 25 May 1964
Primary Maker: H. C. (Horace Clifford) Westermann
Medium: Painted and ink



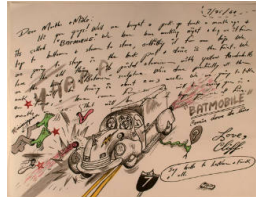
Title: Letter
Date: 25 May 1964
Primary Maker: H. C. (Horace Clifford) Westermann
Medium: Painted and ink



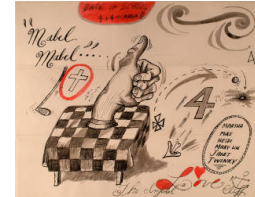
Title: Letter
Date: 25 May 1964
Primary Maker: H. C. (Horace Clifford) Westermann
Medium: Painted and ink



Title: Letter
Date: 25 May 1964
Primary Maker: H. C. (Horace Clifford) Westermann
Medium: Painted and ink



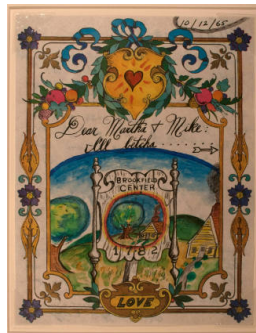
Title: Batmobile
Date: 1964
Primary Maker: H. C. (Horace Clifford) Westermann
Medium: Picture on a letter



Title: Mabel Mabel
Date: 1965
Primary Maker: H. C. (Horace Clifford) Westermann
Medium: Letter in cursive and manuscript with drawing in pen and ink and red ink



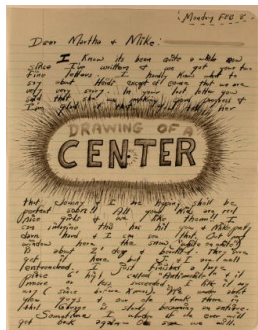
Title: Birthday Greeting
Date: 1965
Primary Maker: H. C. (Horace Clifford) Westermann
Medium: Letter on embellished stationary



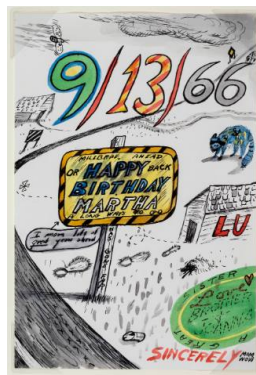
Title: Painting of Brookfield Center
Date: 1965
Primary Maker: H. C. (Horace Clifford) Westermann
Medium: Embellished letter



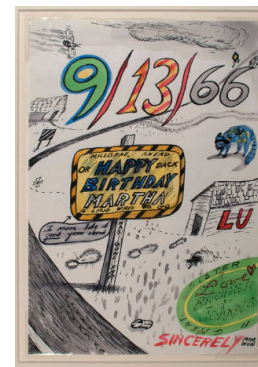
Title: Petrified Forest
Date: 1965
Primary Maker: H. C. (Horace Clifford) Westermann
Medium: Thank-you note and sketch with illustrated, colored envelope



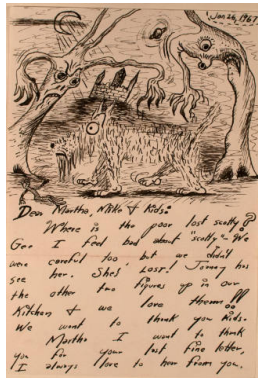
Title: Letter
Date: 8 February 1966
Primary Maker: H. C. (Horace Clifford) Westermann
Medium: Letter illustrated with colored cartoon sketch



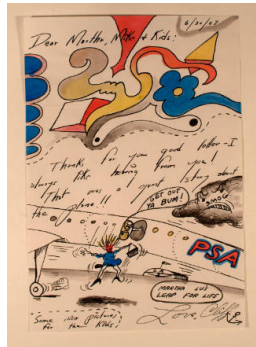
Title: Birthday Greeting
Date: 1966
Primary Maker: H. C. (Horace Clifford) Westermann
Medium: Colored sketch



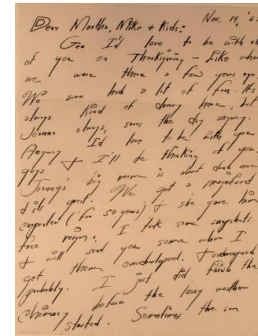
Title: Birthday Greeting and Envelope
Date: 1966
Primary Maker: H. C. (Horace Clifford) Westermann
Medium: Colored sketch and pen and ink envelope



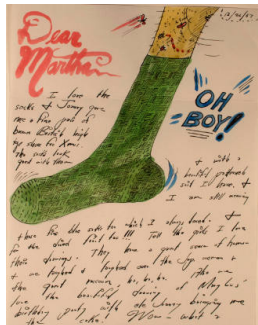
Title: Letter
Date: 26 January 1967
Primary Maker: H. C. (Horace Clifford) Westermann
Medium: Letter with colored sketch



Title: An adventure I'd had at the LA Airport
Date: 1967
Primary Maker: H. C. (Horace Clifford) Westermann
Medium: Letter highly decorated in color, envelope and enclosure of 'flying machines'



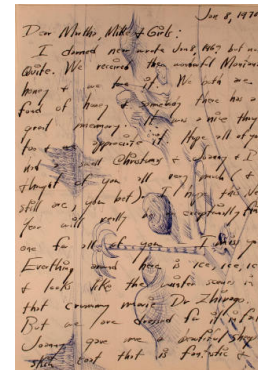
Title: Letter
Date: 19 November 1967
Primary Maker: H. C. (Horace Clifford) Westermann
Medium: Letter with colored drawing and envelope



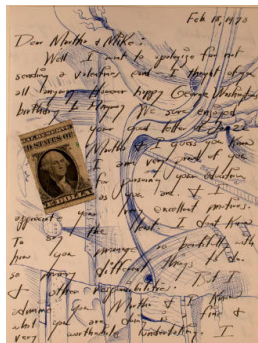
Title: Drawing of Socks
Date: 1967
Primary Maker: H. C. (Horace Clifford) Westermann
Medium: Letter and drawing, watercolor with envelope



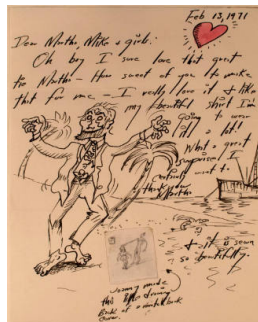
Title: Our new home in the woods
Date: 1969
Primary Maker: H. C. (Horace Clifford) Westermann
Medium: Pen and ink sketch



Title: Letter written over sketch
Date: 1970
Primary Maker: H. C. (Horace Clifford) Westermann
Medium: Pen and ink sketch with decorated envelope and postcard enclosed



Title: The Mental Health Spa
Date: 1970
Primary Maker: H. C. (Horace Clifford) Westermann
Medium: Letter with blue ink sketches on 3 pages and part of a dollar glued to the first page



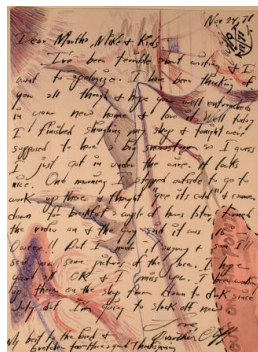
Title: Old Sinking
Freighter
Date: 1971
Primary Maker: H. C. (Horace
Clifford) Westermann
Medium: Letter with watercolor



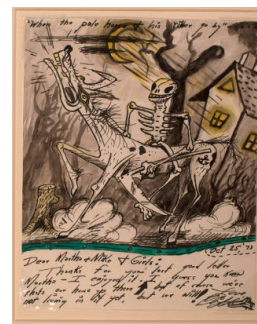
Title: Sketch of our home in LA
Date: 1971
Primary Maker: H. C. (Horace Clifford) Westermann
Medium: Card with sketches and envelope



Title: Frumkin
Announcement
Date: 1971
Primary Maker: H. C. (Horace Clifford) Westermann
Medium: Drawn over and mailed as a postcard



Title: Out on the Point
Date: 1971
Primary Maker: H. C. (Horace Clifford) Westermann
Medium: Pen, ink and color drawing with letter overlaid and envelope

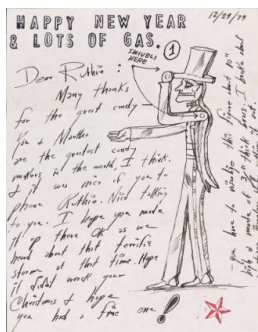


Title: When the pale house and his rider go by...

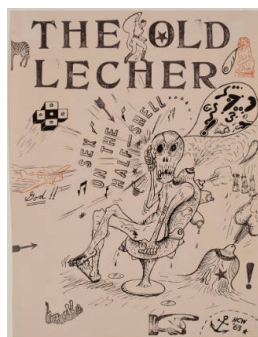
Date: 1973

Primary Maker: H. C. (Horace Clifford) Westermann

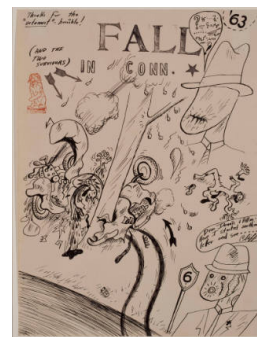
Medium: Note with ink and paint, envelope, enclosed letter and article



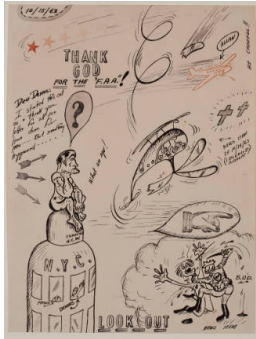
Title: Ruth Marchant
Letter
Date: 1979
Primary Maker: H. C. (Horace Clifford) Westermann
Medium: Pen and ink drawing of recent sculpture



Title: The Old Lecher
Date: 1963
Primary Maker: H. C. (Horace Clifford) Westermann
Medium: Pen and ink and rubber stamp and red and black inks on wove paper



Title: Fall in Conn. (and the Two Survivors)
Date: 1963
Primary Maker: H. C. (Horace Clifford) Westermann
Medium: Pen and ink, rubber stamp and red and black inks, and watercolor on wove paper



Title: Thank God for the "F.A.A."!
Date: 15 October 1963
Primary Maker: H. C. (Horace Clifford) Westermann
Medium: Pen and ink, rubber stamp and red and black inks, and watercolor on wove paper



Title: The Minister of Health (mental) & Welfare
Date: 1963
Primary Maker: H. C. (Horace Clifford) Westermann
Medium: Pen and ink, rubber stamp and red and black inks, watercolor and newsprint collage on wove paper



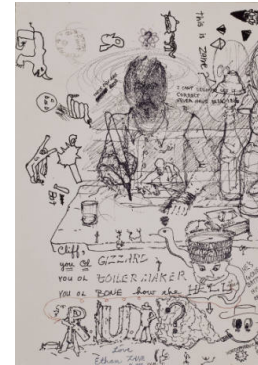
Title: Untitled ("Love")
Date: 1976
Primary Maker: Joanna Beall Westermann
Medium: Ink and watercolor on heavy wove paper



Title: Untitled ("Special Valentine")
Date: 1978
Primary Maker: Joanna Beall Westermann
Medium: Ink and watercolor on heavy wove paper

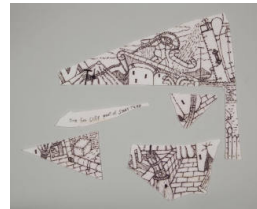


Title: Valentine for Cliff
Date: n.d.
Primary Maker: Joanna Beall Westermann
Medium: Watercolor on thick wove paper



Title: Untitled (Doodle Drawing to HCW)
Date: n.d.
Primary Maker: William T. Wiley
Medium: Ink on heavy wove paper

Title: Port of Shatters
Date: 1966
Primary Maker: William T. Wiley
Medium: Ink on felt



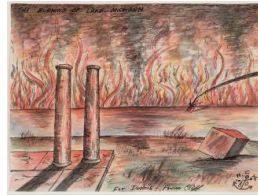
Title: Port of Shatters
Date: 1966
Primary Maker: William T. Wiley
Medium: Ink on felt



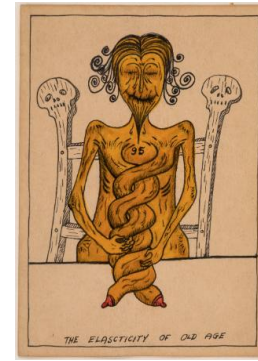
Title: Port of Shatters
Date: 1966
Primary Maker: William T. Wiley
Medium: Ink on felt



Title: Untitled
Date: n.d.
Primary Maker: William T. Wiley
Medium: Watercolor on paper



Title: The Burning of Lake Michigan
Date: 1980
Primary Maker: H. C. (Horace Clifford) Westermann
Medium: Pen and ink and watercolor on white wove paper



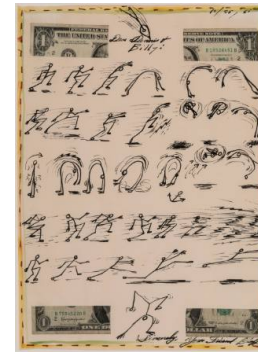
Title: The Elasticity of Old Age
Date: 1965 - 1966
Primary Maker: H. C. (Horace Clifford) Westermann
Medium: Pen and ink and watercolor on beige wove paper



Title: Portrait of Madeline
Date: January 5, 1965
Primary Maker: H. C. (Horace Clifford) Westermann
Medium: Pen and ink on off-white wove paper with paper punch border



Title: Great Culture Explosion
Date: 1966
Primary Maker: H. C. (Horace Clifford) Westermann
Medium: Pen and brush and ink on off-white wove paper



Title: Untitled [Summersaults]
Date: October 25 1966
Primary Maker: H. C. (Horace Clifford) Westermann
Medium: Pen and brush and ink and watercolor with collage of quartered US. one dollar on off-white wove paper



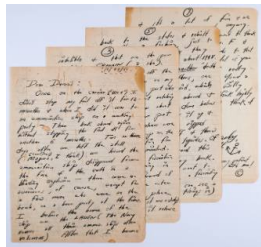
Title: Untitled [D.A.]
Date: December 2, 1964
Primary Maker: H. C. (Horace Clifford) Westermann
Medium: Pen and brush and ink and watercolor on off-white wove paper



Title: envelope
Date: postmarked December 2, 1964
Primary Maker: H. C. (Horace Clifford) Westermann
Medium: Handwritten envelope with watercolor



Title: Death Ship
Date: October 29 1966
Primary Maker: H. C. (Horace Clifford) Westermann
Medium: Pen and brush and ink and watercolor with collage on off-white wove paper.

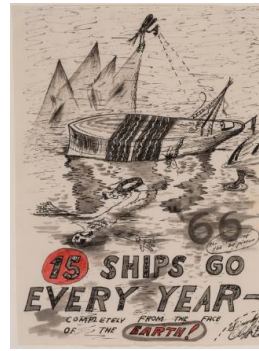


Title: Letter

Date: December 29 1966

Primary Maker: H. C. (Horace Clifford) Westermann

Medium: Paper, ink.

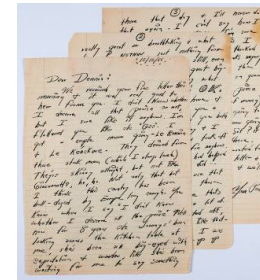


Title: 15 Ships Go Every Year

Date: 1966

Primary Maker: H. C. (Horace Clifford) Westermann

Medium: Pen and brush and ink and watercolor on off-white wove paper



Title: Letter

Date: December 16, 1966

Primary Maker: H. C. (Horace Clifford) Westermann

Medium: Handwritten letter



Title: He's Lost Interest in Us

Date: 1966

Primary Maker: H. C. (Horace Clifford) Westermann

Medium: Pen and brush and ink on white wove paper



Title: Heart's of Gold

Date: 1965 - 1966

Primary Maker: H. C. (Horace Clifford) Westermann

Medium: Pen and brush and ink and watercolor on off-white wove paper



Title: Regards

Date: October 13, 1965

Primary Maker: H. C. (Horace Clifford) Westermann

Medium: Pen and brush and ink and watercolor and gilding on off-white wove paper



Title: envelope

Date: postmarked October 13, 1965

Primary Maker: H. C. (Horace Clifford) Westermann

Medium: Handwritten envelope with gray wash and collaged element on verso

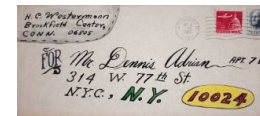


Title: Thanks

Date: September 11, 1965

Primary Maker: H. C. (Horace Clifford) Westermann

Medium: Pen and brush and ink and watercolor and gilding on off-white wove paper

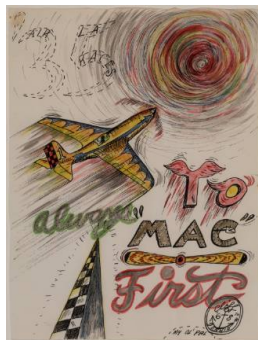


Title: envelope

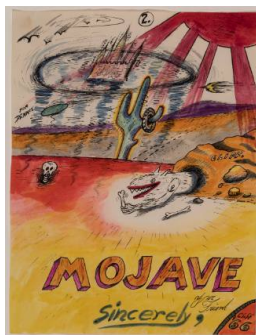
Date: postmarked September 13, 1965

Primary Maker: H. C. (Horace Clifford) Westermann

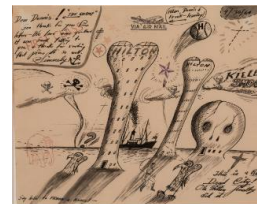
Medium: Handwritten envelope with color ink



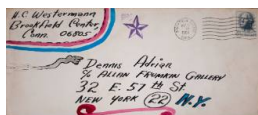
Title: '35 Air L.A. Races
Date: 1968
Primary Maker: H. C. (Horace Clifford) Westermann
Medium: Pen and brush and ink and watercolor on white wove paper



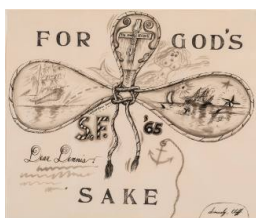
Title: Mojave
Date: 1966
Primary Maker: H. C. (Horace Clifford) Westermann
Medium: Pen and brush and ink and watercolor on white wove paper



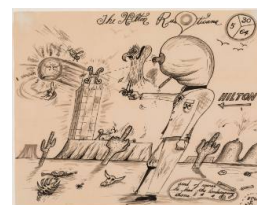
Title: Hilton / Killer Smog
Date: April 30, 1964
Primary Maker: H. C. (Horace Clifford) Westermann
Medium: Pen and ink, gray watercolor, and commercial stamped images in black, red and purple inks on off-white wove paper



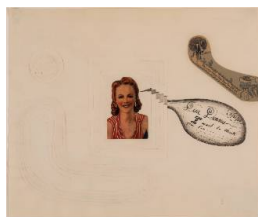
Title: envelope
Date: postmarked May 1, 1964
Primary Maker: H. C. (Horace Clifford) Westermann
Medium: Handwritten envelope with color ink and stamp



Title: For God's Sake
Date: 1965
Primary Maker: H. C. (Horace Clifford) Westermann
Medium: Pen and brush and ink and commercial stamped letters in black on off-white wove paper



Title: The Hilton Rusticana
Date: May 30, 1964
Primary Maker: H. C. (Horace Clifford) Westermann
Medium: Pen and ink and gray watercolor on off-white wove paper



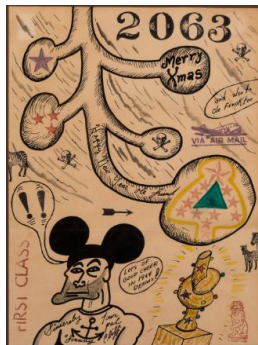
Title: Untitled [Dear Dennis: I Want to Thank you for...]
Date: March 31, 1965
Primary Maker: H. C. (Horace Clifford) Westermann
Medium: Pen and ink and gray watercolor with commercial printed paper collage, blank paper collage, and blind stamping on off-white wove paper



Title: Thanks Dennis
Date: 1964
Primary Maker: H. C. (Horace Clifford) Westermann
Medium: Pen and ink and watercolor on off-white wove paper



Title: Merry Xmas Ole Friend
Date: 1963
Primary Maker: H. C. (Horace Clifford) Westermann
Medium: Pen and ink, commercial rubber stamps and black, blue and red inks, and two U.S. postal stamps on off-white wove paper

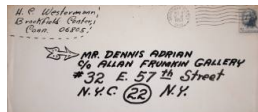


Title: 2063

Date: 1963

Primary Maker: H. C. (Horace Clifford) Westermann

Medium: Pen and ink, and commercial rubber stamps and black, blue and purple inks on off-white wove paper



Title: envelope

Date: postmarked December 19, 1963

Primary Maker: H. C. (Horace Clifford) Westermann

Medium: Handwritten envelope



Title: Hell

Date: 1965

Primary Maker: H. C. (Horace Clifford) Westermann

Medium: Pen and ink and watercolor on off-white wove paper



Title: King Kong

Date: 1965

Primary Maker: H. C. (Horace Clifford) Westermann

Medium: Pen and brush and ink and gray watercolor on off-white wove paper



Title: The Friend

Date: December 5 1965

Primary Maker: H. C. (Horace Clifford) Westermann

Medium: Pen and ink and gray watercolor on off-white wove paper



Title: Ol' Fang

Date: 1968

Primary Maker: H. C. (Horace Clifford) Westermann

Medium: Pen and ink and watercolor on off-white wove paper

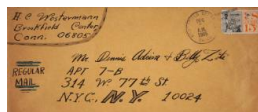


Title: Father

Date: December 3, 1965

Primary Maker: H. C. (Horace Clifford) Westermann

Medium: Pen and ink and gray watercolor on off-white wove paper



Title: envelope

Date: postmarked 12/[3: partial number]/1965

Primary Maker: H. C. (Horace Clifford) Westermann

Medium: Handwritten envelope



Title: This aint my idea of a place to go for a vacation!

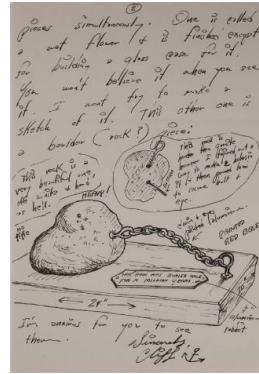
Date: 1972

Primary Maker: H. C. (Horace Clifford) Westermann

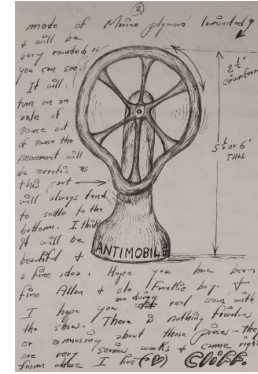
Medium: Ink and watercolor on paper



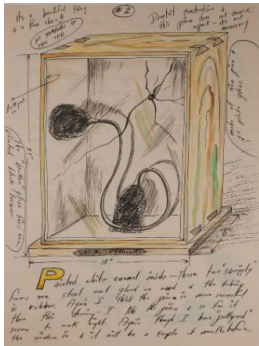
Title: The Freaks
Primary Maker: H. C. (Horace Clifford) Westermann
Medium: Black ink on paper



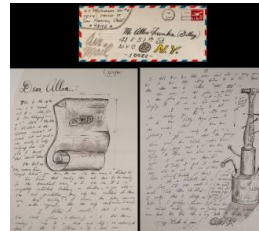
Title: Letter
Date: n.d.
Primary Maker: H. C. (Horace Clifford) Westermann
Medium: Black ink on paper



Title: Letter
Date: n.d.
Primary Maker: H. C. (Horace Clifford) Westermann
Medium: Black ink on paper



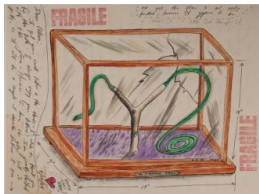
Title: Letter
Date: n.d.
Primary Maker: H. C. (Horace Clifford) Westermann
Medium: Black ink, gold pigment, and watercolor on paper



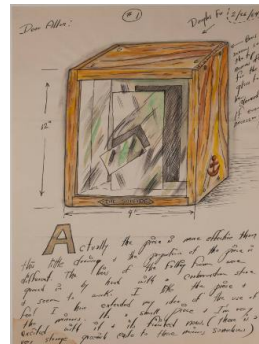
Title: Letter and Envelope
Date: 5 March 1965
Primary Maker: H. C. (Horace Clifford) Westermann
Medium: Black ink on paper.
 Black ink and watercolor on envelope with USPS stamp



Title: Dear Jean: Thanks
Date: 25 September 1966
Primary Maker: H. C. (Horace Clifford) Westermann
Medium: Black, red, purple, yellow, and green ink on paper with collaged dollar bill. Black ink on envelope.



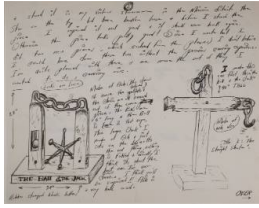
Title: Letter
Date: 14 February 1964
Primary Maker: H. C. (Horace Clifford) Westermann
Medium: Black ink, red ink, and watercolor on paper



Title: Letter
Date: 26 February 1964
Primary Maker: H. C. (Horace Clifford) Westermann
Medium: Black ink, gold pigment, and watercolor on paper



Title: Letter
Date: n.d.
Primary Maker: H. C. (Horace Clifford) Westermann
Medium: Black ink and watercolor on paper



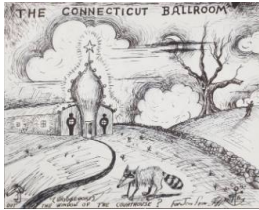
Title: Letter
Date: n.d.
Primary Maker: H. C. (Horace Clifford) Westermann
Medium: Black ink on paper



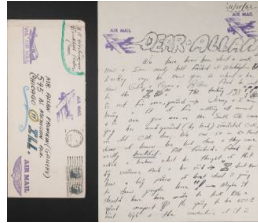
Title: Letter and Drawing
Date: 18 February 1972
Primary Maker: H. C. (Horace Clifford) Westermann
Medium: Black ink and water color on paper



Title: Envelope
Date: n.d.
Primary Maker: H. C. (Horace Clifford) Westermann
Medium: Black and red ink on manila envelope with USPS stamps



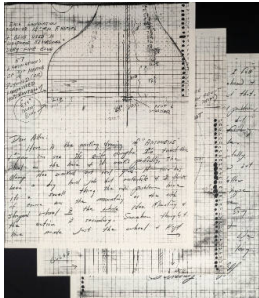
Title: The Connecticut Ballroom
Date: 1976
Primary Maker: H. C. (Horace Clifford) Westermann
Medium: Black ink on paper



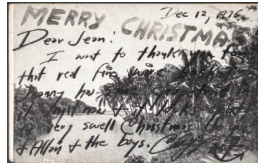
Title: Letter and Envelope
Date: 15 November 1963
Primary Maker: H. C. (Horace Clifford) Westermann
Medium: Black and purple ink with watercolor on paper and envelope with USPS stamps



Title: Envelope
Date: 23 December 1966
Primary Maker: H. C. (Horace Clifford) Westermann
Medium: Black, red, and purple ink, watercolor, and USPS stamp on manila envelope



Title: Letter with Drawing (Antimobile)
Date: n.d.
Primary Maker: H. C. (Horace Clifford) Westermann
Medium: Black ink on paper



Title: Postcard
Date: 12 December 1976
Primary Maker: H. C. (Horace Clifford) Westermann
Medium: Black ink and watercolor on postcard with USPS stamp



Title: Letter with Drawing (Antimobile)
Primary Maker: H. C. (Horace Clifford) Westermann
Medium: Black ink on paper



**Title: Letter with
Drawing (Untitled)**

Primary Maker: H. C. (Horace
Clifford) Westermann

Medium: Black ink on paper