

# Basic Report



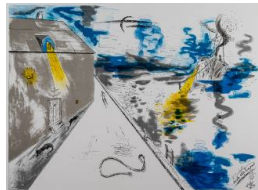
**Title:** Human Fly (The Human Fly)  
**Date:** 1971  
**Primary Maker:** H. C. (Horace Clifford) Westermann  
**Medium:** One-color woodcut (black) on handmade paper



**Title:** Red Planet "J" (Red Planet J)  
**Date:** 1967  
**Primary Maker:** H. C. (Horace Clifford) Westermann  
**Medium:** Three-color lithograph (red, blue, yellow)



**Title:** Six Lithographs: Portfolio  
**Date:** 1972  
**Primary Maker:** H. C. (Horace Clifford) Westermann  
**Medium:** Brown wove paper commercial document portfolio with fabric ribbon ties



**Title:** Six Lithographs: Death Ship in Port (Deathship in a Port)  
**Date:** 20 January - 23 June 1972  
**Primary Maker:** H. C. (Horace Clifford) Westermann  
**Medium:** Six-color lithograph (yellow, red-blue, green-blue, blue-black, warm black, black)



**Title:** Six Lithographs: Green River  
**Date:** 25 January - 27 July 1972  
**Primary Maker:** H. C. (Horace Clifford) Westermann  
**Medium:** Eight-color lithograph (yellow, blue, blue-black, red, orange, warm black, green, black)



**Title:** Six Lithographs: The Lost Planet (Lost Planet)  
**Date:** 27 January - 10 July 1972  
**Primary Maker:** H. C. (Horace Clifford) Westermann  
**Medium:** Seven-color lithograph (yellow, red, blue, green, warm black, blue-black, black)



**Title:** Six Lithographs: "J" Print (J Print, Christ Landscape, "Sermon on the Mount")  
**Date:** 29 January - 25 July 1972  
**Primary Maker:** H. C. (Horace Clifford) Westermann  
**Medium:** Nine-color lithograph (black, yellow, orange, red, blue, green, violet, warm black, black)



**Title:** Six Lithographs: An Affair in the Islands  
**Date:** 24 - 27 July 1972  
**Primary Maker:** H. C. (Horace Clifford) Westermann  
**Medium:** Seven-color lithograph (yellow, red, violet, blue, green, blue-black, black)



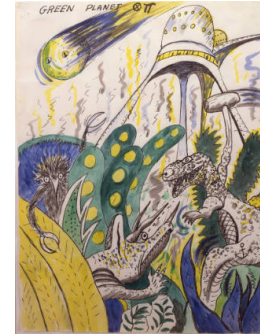
**Title:** Six Lithographs: Holiday Inn  
**Date:** 26 - 27 July 1972  
**Primary Maker:** H. C. (Horace Clifford) Westermann  
**Medium:** Seven-color lithograph (yellow, red, violet, blue, green, blue-black, black)



**Title:** Untitled #7  
**Date:** 1968  
**Primary Maker:** H. C. (Horace Clifford) Westermann  
**Medium:** Multi-color lithograph on wove paper



**Title:** Untitled #16  
**Date:** 1968  
**Primary Maker:** H. C. (Horace Clifford) Westermann  
**Medium:** Two-color lithograph on wove paper



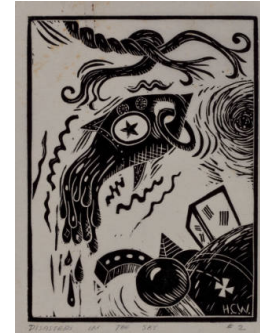
**Title:** Green Planet  
**Date:** 1967  
**Primary Maker:** H. C. (Horace Clifford) Westermann  
**Medium:** Four-color lithograph on Arches wove paper



**Title:** The Connecticut Ballroom: Popeye and Pinocchio  
**Date:** 1975  
**Primary Maker:** H. C. (Horace Clifford) Westermann  
**Medium:** Four-color woodcut on Natsume #4007 Japanese wove paper



**Title:** Disasters in the Sky #1: Bat and Building (Air Disasters in the Sky #1) and Merry Xmas 6 & 2 A Happy New Year  
**Date:** 1962  
**Primary Maker:** H. C. (Horace Clifford) Westermann  
**Medium:** Two one-color linoleum cuts (black), printed side by side on the same bi-fold sheet on thin wove Japan



**Title:** Disasters in the Sky #2 (Air Disasters in the Sky #2)  
**Date:** 1962 or 1963  
**Primary Maker:** H. C. (Horace Clifford) Westermann  
**Medium:** One-color linoleum cut (black) on thin wove Japan



**Title:** Disasters in the Sky #4  
**Date:** 1962 or 1963  
**Primary Maker:** H. C. (Horace Clifford) Westermann  
**Medium:** One-color linoleum cut (black) on thin wove Japan



**Title:** Disasters in the Sky #5 (Air Disasters in the Sky #5)  
**Date:** 1962  
**Primary Maker:** H. C. (Horace Clifford) Westermann  
**Medium:** One-color linoleum cut (black) on thin wove Japan



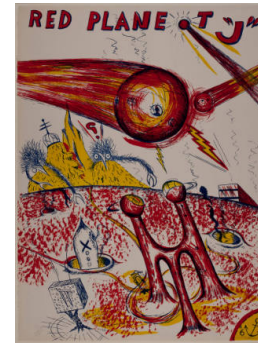
**Title:** Merry Xmas!  
**Date:** 1964  
**Primary Maker:** H. C. (Horace Clifford) Westermann  
**Medium:** One-color linoleum cut (black) on thin wove Japan



**Title:** Merry Xmas!  
**Date:** 1964  
**Primary Maker:** H. C. (Horace Clifford) Westermann  
**Medium:** One-color linoleum cut (black) on thin wove Japan



**Title:** Woman from Indianapolis (Columbia, Missouri)  
**Date:** 1967  
**Primary Maker:** H. C. (Horace Clifford) Westermann  
**Medium:** One-color lithograph (black) on thick wove paper with deckled edges



**Title:** Red Planet "J"  
(Red Planet "J")  
**Date:** 1967  
**Primary Maker:** H. C. (Horace Clifford) Westermann  
**Medium:** Two-color lithograph (blue, red) on thick wove paper with deckled edges



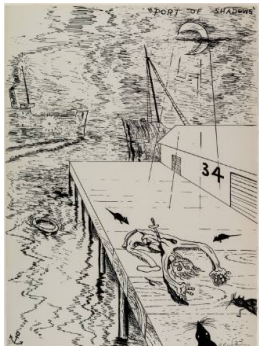
**Title:** Green Planet  
**Date:** 1967  
**Primary Maker:** H. C. (Horace Clifford) Westermann  
**Medium:** Four-color lithograph (black, blue, green, yellow) on Arches thick wove paper with deckled edges



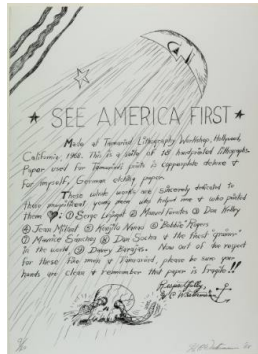
**Title:** Death Ship of No Port (Deathship of No Port, Red Deathship)  
**Date:** 1967  
**Primary Maker:** H. C. (Horace Clifford) Westermann  
**Medium:** Three-color lithograph (red, black, yellow) on thick Arches wove paper with deckled edges



**Title:** Death Ship of No Port  
**Date:** 1967  
**Primary Maker:** H. C. (Horace Clifford) Westermann  
**Medium:** Three-color lithograph (red, black, yellow) on thick wove paper with deckled edges



**Title:** Port of Shadows (Pier 31)  
**Date:** 1967  
**Primary Maker:** H. C. (Horace Clifford) Westermann  
**Medium:** One-color lithograph (black) on thick Arches wove paper with deckled edges



**Title:** See America First: Untitled (Title/Colophon Page, See America First I)  
**Date:** 23 - 24 October 1968  
**Primary Maker:** H. C. (Horace Clifford) Westermann  
**Medium:** One-color lithograph (black).

**Title:** See America First  
**Date:** September - October 1968  
**Primary Maker:** H. C. (Horace Clifford) Westermann  
**Medium:** Lithographs and wood burned cover.

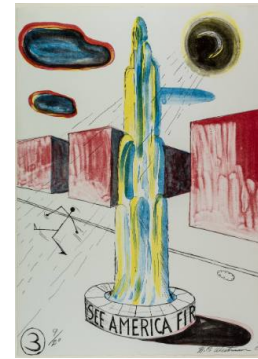




**Title:** See America First: Untitled #1 (See America First II)  
**Date:** 6 - 11 October 1968  
**Primary Maker:** H. C. (Horace Clifford) Westermann  
**Medium:** Three-color lithograph (yellow, red, black).



**Title:** See America First: Untitled #2 (See America First III)  
**Date:** 5 - 21 September 1968  
**Primary Maker:** H. C. (Horace Clifford) Westermann  
**Medium:** Four-color lithograph (yellow, red, blue, black).



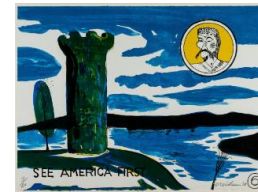
**Title:** See America First: Untitled #3 (See America First IV)  
**Date:** 6 - 27 September 1968  
**Primary Maker:** H. C. (Horace Clifford) Westermann  
**Medium:** Four-color lithograph (yellow, blue, red, black).



**Title:** See America First: Untitled #4 (See America First V)  
**Date:** 13 - 19 September 1968  
**Primary Maker:** H. C. (Horace Clifford) Westermann  
**Medium:** Two-color lithograph (yellow, black).



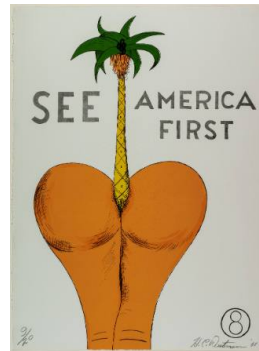
**Title:** See America First: Untitled #5 (See America First VI)  
**Date:** 11 - 19 September 1968  
**Primary Maker:** H. C. (Horace Clifford) Westermann  
**Medium:** One-color lithograph (blue).



**Title:** See America First: Untitled #6 (See America First VII)  
**Date:** 18 September - 2 October 1968  
**Primary Maker:** H. C. (Horace Clifford) Westermann  
**Medium:** Four-color lithograph (yellow, blue, light blue, black).



**Title:** See America First: Untitled #7 (See America First VIII)  
**Date:** 24 September - 7 October 1968  
**Primary Maker:** H. C. (Horace Clifford) Westermann  
**Medium:** Multi-color lithograph (yellow, pink, blue, combination of yellow, pink, blue employing Blended Ink Method, black).



**Title:** See America First: Untitled #8  
**Date:** 20 September - 3 October 1968  
**Primary Maker:** H. C. (Horace Clifford) Westermann  
**Medium:** Five-color lithograph (yellow, orange, light orange, green, black).



**Title:** See America First: Untitled #9 (See America First X)  
**Date:** 1 - 14 October 1968  
**Primary Maker:** H. C. (Horace Clifford) Westermann  
**Medium:** Four-color lithograph (yellow, red, blue, black).

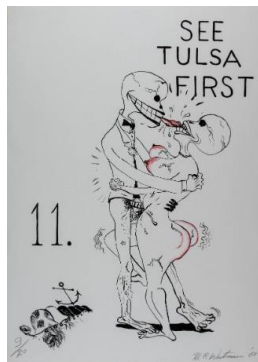


**Title: See America First:  
Untitled #10 (See  
America First XI)**

**Date:** 1 - 14 October 1968

**Primary Maker:** H. C. (Horace Clifford) Westermann

**Medium:** Four-color lithograph (yellow, red, blue, black).



**Title: See America First:  
Untitled #11 (See Tulsa  
First, See America First  
XII)**

**Date:** 3 - 9 October 1968

**Primary Maker:** H. C. (Horace Clifford) Westermann

**Medium:** Two-color lithograph (red, black).



**Title: See America First:  
Untitled #12 (See  
America First XIII)**

**Date:** 8 - 10 October 1968

**Primary Maker:** H. C. (Horace Clifford) Westermann

**Medium:** One-color lithograph (black).



**Title: See America First:  
Untitled #13 (See  
America First XIV)**

**Date:** 14 - 21 October 1968

**Primary Maker:** H. C. (Horace Clifford) Westermann

**Medium:** Two-color lithograph (yellow, black).



**Title: See America First:  
Untitled #14 (Big Red,  
See America First XV)**

**Date:** 11 - 22 October 1968

**Primary Maker:** H. C. (Horace Clifford) Westermann

**Medium:** Two-color lithograph (red, black).



**Title: See America First:  
Untitled #15 (See  
America First XVI)**

**Date:** 16 - 17 October 1968

**Primary Maker:** H. C. (Horace Clifford) Westermann

**Medium:** One-color lithograph (black).



**Title: See America First:  
Untitled #16 (See  
America First XVII)**

**Date:** 17 - 25 October 1968

**Primary Maker:** H. C. (Horace Clifford) Westermann

**Medium:** Two-color lithograph (green, black).



**Title: See America First:  
Untitled #17 (See  
America First XVIII)**

**Date:** 23 - 25 October 1968

**Primary Maker:** H. C. (Horace Clifford) Westermann

**Medium:** Two-color lithograph (yellow, black).

**Title: See America First:  
Untitled (Title/Colophon  
Page)**

**Date:** 23 - 24 October 1968

**Primary Maker:** H. C. (Horace Clifford) Westermann

**Medium:** One-color lithograph (black) on German Etching with torn and deckled edges

**Title: See America First:  
Untitled (Title/Colophon  
Page)**

**Date:** 23 - 24 October 1968

**Primary Maker:** H. C. (Horace Clifford) Westermann

**Medium:** One-color lithograph (black) on Copperplate Deluxe with torn and deckled edges

**Title: See America First:  
Untitled #1**

**Date:** 6 - 11 October 1968

**Primary Maker:** H. C. (Horace Clifford) Westermann

**Medium:** Three-color lithograph (yellow, red, black) on German Etching with torn and deckled edges

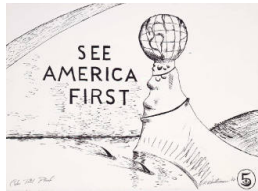


**Title: See America First:  
Untitled #2**

**Date:** 5 - 21 September 1968

**Primary Maker:** H. C. (Horace Clifford) Westermann

**Medium:** Four-color lithograph (yellow, red, blue, black) on German Etching with torn and deckled edges



**Title: See America First:  
Untitled #5 (See America  
First VI)**

**Date:** 11 - 19 September 1968

**Primary Maker:** H. C. (Horace Clifford) Westermann

**Medium:** One-color lithograph (blue) on German Etching with torn and deckled edges

**Title: See America First:  
Untitled #5**

**Date:** 11 - 19 September 1968

**Primary Maker:** H. C. (Horace Clifford) Westermann

**Medium:** One-color lithograph (blue) on German Etching with torn and deckled edges

**Title: See America First:  
Untitled #7**

**Date:** 24 September - 7 October 1968

**Primary Maker:** H. C. (Horace Clifford) Westermann

**Medium:** Multi-color lithograph (yellow, pink, blue, black) on German Etching with torn and deckled edges

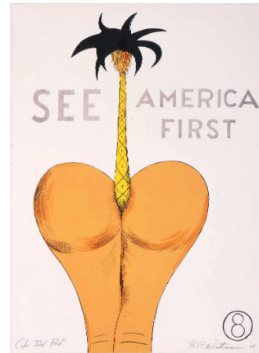


**Title: See America First:  
Untitled #7 (See America  
First VIII)**

**Date:** 24 September - 7 October 1968

**Primary Maker:** H. C. (Horace Clifford) Westermann

**Medium:** Multi-color lithograph (yellow, pink, blue, black) on German Etching with torn and deckled edges



**Title: See America First:  
Untitled #8**

**Date:** 20 September - 3 October 1968

**Primary Maker:** H. C. (Horace Clifford) Westermann

**Medium:** Five-color lithograph (yellow, orange, light orange, green, black) on Copperplate Deluxe with torn and deckled edges



**Title: See America First:  
Untitled #8**

**Date:** 20 September - 3 October 1968

**Primary Maker:** H. C. (Horace Clifford) Westermann

**Medium:** Five-color lithograph (yellow, orange, light orange, green, black) on German Etching with torn and deckled edges



**Title: See America First:  
Untitled #9 (See America  
First X)**

**Date:** 1 - 14 October 1968

**Primary Maker:** H. C. (Horace  
Clifford) Westermann

**Medium:** Four-color lithograph  
(yellow, red, blue, black) on  
German etching with torn and  
deckled edges



**Title: See America First:  
Untitled #10 (See  
America First XI)**

**Date:** 1 - 14 October 1968

**Primary Maker:** H. C. (Horace  
Clifford) Westermann

**Medium:** Four-color lithograph  
(yellow, red, blue, black) on  
German Etching with torn and  
deckled edges



**Title: See America First:  
Untitled #17 (See  
America First XVIII)**

**Date:** 23 - 25 October 1968

**Primary Maker:** H. C. (Horace  
Clifford) Westermann

**Medium:** Two-color lithograph  
(yellow, black) on German  
Etching with torn and deckled  
edges



**Title: Untitled**

**Date:** 23 September - 3  
October 1968

**Primary Maker:** H. C. (Horace  
Clifford) Westermann

**Medium:** Two-color lithograph  
(yellow, black)



**Title: Untitled**

**Date:** 23 September - 3  
October 1968

**Primary Maker:** H. C. (Horace  
Clifford) Westermann

**Medium:** Two-color lithograph  
(yellow, black)



**Title: Human Fly**

**Date:** 1971

**Primary Maker:** H. C. (Horace  
Clifford) Westermann

**Medium:** One-color woodcut  
(black) on hand-made  
Japanese mulberry paper



**Title: Mad Woman**

**Date:** 1971

**Primary Maker:** H. C. (Horace  
Clifford) Westermann

**Medium:** Four-color woodcut  
(black, yellow, red, blue) on  
thick wove Japan



**Title: Human Cannonball**

**Date:** 1971

**Primary Maker:** H. C. (Horace  
Clifford) Westermann

**Medium:** Four-color woodcut  
(black, yellow, red, blue) on  
thick wove Japan



**Title: Six Lithographs:  
Death Ship in Port**

**Date:** 20 January - 23 June  
1972

**Primary Maker:** H. C. (Horace  
Clifford) Westermann

**Medium:** Six-color lithograph  
(yellow, red-blue, green-blue,  
blue-black, warm black, black)  
on BFK Rives with torn and  
deckled edges



**Title: Six Lithographs:  
Green River**

**Date:** 25 January - 27 July  
1972

**Primary Maker:** H. C. (Horace  
Clifford) Westermann

**Medium:** Eight-color lithograph  
(yellow, blue, blue-black, red,  
orange, warm black, green,  
black) on BFK Rives with torn  
and deckled edges

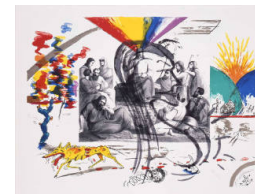


**Title: Six Lithographs:  
The Lost Planet**

**Date:** 27 January - 10 July  
1972

**Primary Maker:** H. C. (Horace  
Clifford) Westermann

**Medium:** Seven-color  
lithograph (yellow, red, blue,  
green, warm black, blue black,  
black) on BFK Rives with torn  
and deckled edges



**Title: Six Lithographs:  
"J" Print**

**Date:** 29 January - 25 July  
1972

**Primary Maker:** H. C. (Horace  
Clifford) Westermann

**Medium:** Nine-color lithograph  
(black, yellow, orange, red,  
blue, green, violet, warm black,  
black) on BFK Rives with torn  
and deckled edges



**Title: Six Lithographs:  
An Affair in the Islands**

**Date:** 24 - 27 July 1972

**Primary Maker:** H. C. (Horace  
Clifford) Westermann

**Medium:** Nine-color lithograph  
(yellow, orange, red, violet,  
green, blue, blue-black, warm  
black, black) on BFK Rives  
with torn and deckled edges



**Title: Six Lithographs:  
Holiday Inn**

**Date:** 26 - 27 July 1972

**Primary Maker:** H. C. (Horace  
Clifford) Westermann

**Medium:** Seven-color  
lithograph (yellow, red, violet,  
blue, green, blue-black, black)  
on BFK Rives with torn and  
deckled edges



**Title: Crash in the Jungle**

**Date:** 1972

**Primary Maker:** H. C. (Horace  
Clifford) Westermann

**Medium:** Seven-color  
lithograph (yellow, red, violet,  
blue, green, blue-black, black)  
on BFK Rives paper



**Title: The Connecticut  
Ballroom (Title  
/Colophon Page)**

**Date:** Printed 5 - 6 July 1976

**Primary Maker:** H. C. (Horace  
Clifford) Westermann

**Medium:** One-color woodblock  
(black) on Natsume #4007  
wove paper



**Title: The Connecticut  
Ballroom: The Green Hell**

**Date:** 1975

**Primary Maker:** H. C. (Horace  
Clifford) Westermann

**Medium:** Four-color woodcut  
(red, green, yellow, black) on  
Natsume #4007 wove paper



**Title: The Connecticut  
Ballroom: The Green Hell**

**Date:** 1975

**Primary Maker:** H. C. (Horace  
Clifford) Westermann

**Medium:** Four-color (red,  
yellow, green, black) on  
Natsume #4007 wove paper

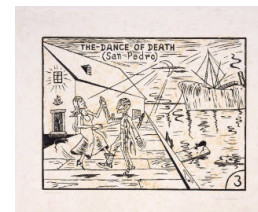




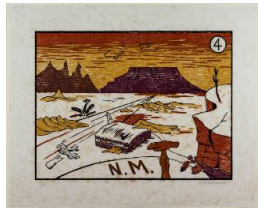
**Title: The Connecticut Ballroom: Arctic Death Ship**  
**Date:** 1975  
**Primary Maker:** H. C. (Horace Clifford) Westermann  
**Medium:** Three-color woodcut (orange, green, black) on Natsume #4007 wove paper



**Title: The Connecticut Ballroom: Dance of Death (The Dance of Death [San Pedro])**  
**Date:** 19 August - 13 September 1975  
**Primary Maker:** H. C. (Horace Clifford) Westermann  
**Medium:** Four-color woodcut (gray, red, yellow, black) on Natsume #4007 wove paper



**Title: The Connecticut Ballroom: Dance of Death**  
**Date:** 19 August - 13 September 1975  
**Primary Maker:** H. C. (Horace Clifford) Westermann



**Title: The Connecticut Ballroom: Deserted Airport N.M.**  
**Date:** 25 September - 15 October 1975  
**Primary Maker:** H. C. (Horace Clifford) Westermann  
**Medium:** Four-color woodcut (red, violet, yellow, black) on Natsume #4007 wove paper



**Title: The Connecticut Ballroom: Deserted Airport N.M.**  
**Date:** 25 September - 15 October 1975  
**Primary Maker:** H. C. (Horace Clifford) Westermann



**Title: The Connecticut Ballroom: Popeye and Pinocchio**  
**Date:** 3 - 27 November 1975  
**Primary Maker:** H. C. (Horace Clifford) Westermann  
**Medium:** Four-color woodcut (red, blue, yellow, black) on Natsume #4007 wove paper



**Title: The Connecticut Ballroom: Elephants' Graveyard**  
**Date:** 1975  
**Primary Maker:** H. C. (Horace Clifford) Westermann  
**Medium:** One-color woodblock (black) on Natsume #4007 wove paper



**Title: Frog**  
**Date:** 1976  
**Primary Maker:** H. C. (Horace Clifford) Westermann



**Title: For Richard/From Cliff**  
**Date:** 1977  
**Primary Maker:** H. C. (Horace Clifford) Westermann  
**Medium:** One-color woodcut (black) on Natsume #4007 Japanese wove paper



**Title:** Trial color proof  
for The Connecticut  
Ballroom: The Green Hell  
**Date:** 1975 - 1976  
**Primary Maker:** H. C. (Horace  
Clifford) Westermann  
**Medium:** Color inks on  
Natsume #4007 Japanese  
wove paper



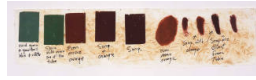
**Title:** Trial color proof  
for The Connecticut  
Ballroom: The Green Hell  
**Date:** 1975 - 1976  
**Primary Maker:** H. C. (Horace  
Clifford) Westermann  
**Medium:** Color inks on  
Natsume #4007 Japanese  
wove paper



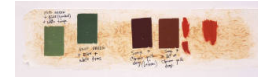
**Title:** Trial color proof  
for The Connecticut  
Ballroom: The Green Hell  
**Date:** 1975 - 1976  
**Primary Maker:** H. C. (Horace  
Clifford) Westermann  
**Medium:** Color inks on  
Natsume #4007 Japanese  
wove paper



**Title:** Trial color proof  
for The Connecticut  
Ballroom: The Green Hell  
**Date:** 1975 - 1976  
**Primary Maker:** H. C. (Horace  
Clifford) Westermann  
**Medium:** Color inks on  
Natsume #4007 Japanese  
wove paper



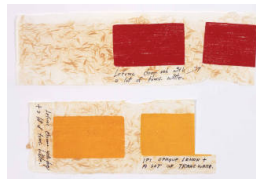
**Title:** Trial color proof  
for The Connecticut  
Ballroom: The Arctic  
Death Ship  
**Date:** 1975 - 1976  
**Primary Maker:** H. C. (Horace  
Clifford) Westermann  
**Medium:** Color inks on  
Natsume #4007 Japanese  
wove paper



**Title:** Trial color proof  
for The Connecticut  
Ballroom: The Arctic  
Death Ship  
**Date:** 1975 - 1976  
**Primary Maker:** H. C. (Horace  
Clifford) Westermann  
**Medium:** Color inks on  
Natsume #4007 Japanese  
wove paper



**Title:** Trial color proof  
for The Connecticut  
Ballroom: Arctic Death  
Ship  
**Date:** 1975 - 1976  
**Primary Maker:** H. C. (Horace  
Clifford) Westermann  
**Medium:** Color inks on  
Natsume #4007 Japanese  
wove paper



**Title:** Trial color proof  
for The Connecticut  
Ballroom: Dance of  
Death  
**Date:** 1975 - 1976  
**Primary Maker:** H. C. (Horace  
Clifford) Westermann  
**Medium:** Color inks on  
Natsume #4007 Japanese  
wove paper



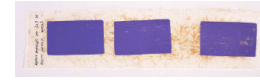
**Title:** Trial color proof  
for The Connecticut  
Ballroom: Dance of  
Death  
**Date:** 1975 - 1976  
**Primary Maker:** H. C. (Horace  
Clifford) Westermann  
**Medium:** Color inks on  
Natsume #4007 Japanese  
wove paper



**Title:** Trial color proof  
for The Connecticut  
Ballroom: Deserted  
Airport N.M.  
**Date:** 1975 - 1976  
**Primary Maker:** H. C. (Horace  
Clifford) Westermann  
**Medium:** Color inks on  
Natsume #4007 Japanese  
wove paper



**Title:** Trial color proof  
for The Connecticut  
Ballroom: Deserted  
Airport N.M.  
**Date:** 1975 - 1976  
**Primary Maker:** H. C. (Horace  
Clifford) Westermann  
**Medium:** Color inks on  
Natsume #4007 Japanese  
wove paper



**Title:** Trial color proof  
for The Connecticut  
Ballroom: Deserted  
Airport N.M.  
**Date:** 1975 - 1976  
**Primary Maker:** H. C. (Horace  
Clifford) Westermann  
**Medium:** Color inks on  
Natsume #4007 Japanese  
wove paper



**Title:** Trial color proof  
for The Connecticut  
Ballroom: Deserted  
Airport N.M.  
**Date:** 1975 - 1976  
**Primary Maker:** H. C. (Horace  
Clifford) Westermann  
**Medium:** Color inks on  
Natsume #4007 Japanese  
wove paper



**Title:** Trial color proof  
for The Connecticut  
Ballroom: Deserted  
Airport N.M.  
**Date:** 1975 - 1976  
**Primary Maker:** H. C. (Horace  
Clifford) Westermann  
**Medium:** Color inks on  
Natsume #4007 Japanese  
wove paper



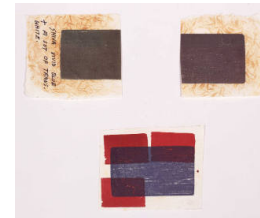
**Title:** Trial color proof  
for The Connecticut  
Ballroom: Deserted  
Airport N.M.  
**Date:** 1975 - 1976  
**Primary Maker:** H. C. (Horace  
Clifford) Westermann  
**Medium:** Color inks on  
Natsume #4007 Japanese  
wove paper



**Title:** Trial color proof  
for The Connecticut  
Ballroom: Deserted  
Airport N.M.  
**Date:** 1975 - 1976  
**Primary Maker:** H. C. (Horace  
Clifford) Westermann  
**Medium:** Color inks on  
Natsume #4007 Japanese  
wove paper

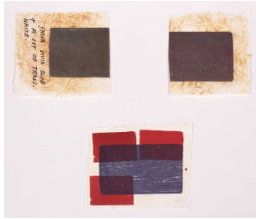


**Title:** Trial color proof  
for The Connecticut  
Ballroom: Popeye and  
Pinocchio  
**Date:** 1975 - 1976  
**Primary Maker:** H. C. (Horace  
Clifford) Westermann  
**Medium:** Color inks on  
Natsume #4007 Japanese  
wove paper



**Title:** Trial color proof  
for The Connecticut  
Ballroom: Popeye and  
Pinocchio  
**Date:** 1975 - 1976  
**Primary Maker:** H. C. (Horace  
Clifford) Westermann  
**Medium:** Color inks on  
Natsume #4007 Japanese  
wove paper

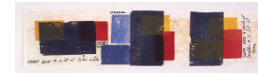




**Title:** Trial color proof for The Connecticut Ballroom: Popeye and Pinocchio  
**Date:** 1975 - 1976  
**Primary Maker:** H. C. (Horace Clifford) Westermann  
**Medium:** Color inks on Natsume #4007 Japanese wove paper



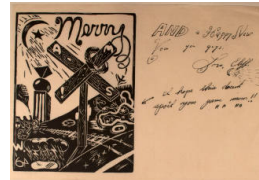
**Title:** Trial color proof for The Connecticut Ballroom: Popeye and Pinocchio  
**Date:** 1975 - 1976  
**Primary Maker:** H. C. (Horace Clifford) Westermann  
**Medium:** Color inks on Natsume #4007 Japanese wove paper



**Title:** Trial color proof for The Connecticut Ballroom: Popeye and Pinocchio  
**Date:** 1975 - 1976  
**Primary Maker:** H. C. (Horace Clifford) Westermann  
**Medium:** Color inks on Natsume #4007 Japanese wove paper



**Title:** Untitled  
**Date:** 1972/2000  
**Primary Maker:** H. C. (Horace Clifford) Westermann  
**Medium:** Two-color photogravure (light brown, dark brown) on Somerset wove paper



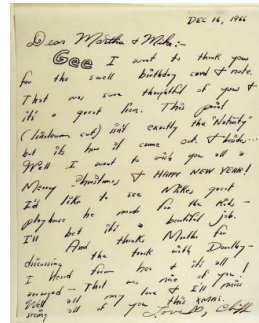
**Title:** Christmas Card  
**Date:** 1964  
**Primary Maker:** H. C. (Horace Clifford) Westermann  
**Medium:** Linocut with little cutouts, an embellished cigar box decoration, an embellished postcard for Mike, an old postcard, and a Melrose Baking Powder card



**Title:** Letter and Linocuts  
**Date:** 1966  
**Primary Maker:** H. C. (Horace Clifford) Westermann  
**Medium:** Two linocuts on one sheet



**Title:** Letter and Linocuts  
**Date:** 1966  
**Primary Maker:** H. C. (Horace Clifford) Westermann  
**Medium:** Letter and two linocuts on one sheet



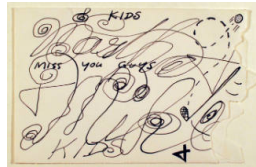
**Title:** Letter and Linocuts  
**Date:** December 16, 1966  
**Primary Maker:** H. C. (Horace Clifford) Westermann  
**Medium:** Letter and two linocuts on one sheet



**Title:** Letter and Linocuts  
**Date:** December 16, 1966  
**Primary Maker:** H. C. (Horace Clifford) Westermann  
**Medium:** Letter and two linocuts on one sheet



**Title:** Letter and Linocuts  
**Date:** 1966  
**Primary Maker:** H. C. (Horace Clifford) Westermann  
**Medium:** Letter and two linocuts on one sheet



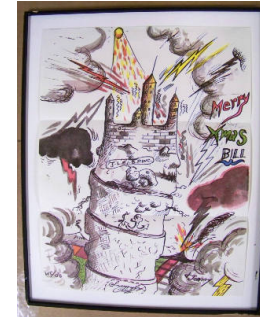
**Title:** Letter and Linocuts  
**Date:** 1966  
**Primary Maker:** H. C. (Horace Clifford) Westermann  
**Medium:** Letter and two linocuts on one sheet

**Title:** See America First  
**Date:** 1968  
**Primary Maker:** H. C. (Horace Clifford) Westermann  
**Medium:** Colored lithographs in wooden case.



**Title:** Untitled  
**Date:** June 1968  
**Primary Maker:** H. C. (Horace Clifford) Westermann  
**Medium:** Offset color lithograph?

**Title:** Untitled  
**Date:** June 1968  
**Primary Maker:** H. C. (Horace Clifford) Westermann  
**Medium:** Offset color lithograph?



**Title:** Untitled  
**Date:** June 1968  
**Primary Maker:** H. C. (Horace Clifford) Westermann  
**Medium:** Offset color lithograph?

**Title:** Untitled  
**Date:** June 1968  
**Primary Maker:** H. C. (Horace Clifford) Westermann  
**Medium:** Offset color lithograph?



**Title:** Untitled  
**Date:** June 1968  
**Primary Maker:** H. C. (Horace Clifford) Westermann  
**Medium:** Offset color lithograph?

**Title:** Untitled  
**Date:** June 1968  
**Primary Maker:** H. C. (Horace Clifford) Westermann  
**Medium:** Offset color lithograph?



**Title: Untitled**

**Date:** June 1968

**Primary Maker:** H. C. (Horace Clifford) Westermann

**Medium:** Offset color lithograph?

**Title: Untitled**

**Date:** June 1968

**Primary Maker:** H. C. (Horace Clifford) Westermann

**Medium:** Offset color lithograph?

**Title: Untitled**

**Date:** June 1968

**Primary Maker:** H. C. (Horace Clifford) Westermann

**Medium:** Offset color lithograph?

**Title: Untitled**

**Date:** June 1968

**Primary Maker:** H. C. (Horace Clifford) Westermann

**Medium:** Offset color lithograph?



**Title: Disasters in the Sky #1 (Bat and Building, Air Disasters in the Sky #1) and Merry Xmas 6 & 2 A Happy New Year Cliff**

**Date:** 1962

**Primary Maker:** H. C. (Horace Clifford) Westermann

**Medium:** Linoleum cut (black) on thin laid Japanese paper (left) and linoleum cut (black) with additional linoleum cut or rubber stamp (red) on thin laid Japanese paper (right)



**Title: Disasters in the Sky #2 (Air Disasters in the Sky #2)**

**Date:** 1962

**Primary Maker:** H. C. (Horace Clifford) Westermann

**Medium:** Linoleum cut (black) on thin laid Japanese paper



**Title: Disasters in the Sky #3**

**Date:** 1962 or 1963

**Primary Maker:** H. C. (Horace Clifford) Westermann

**Medium:** Linoleum cut (black) on thin laid Japanese paper



**Title: Disasters in the Sky #4**

**Date:** 1963

**Primary Maker:** H. C. (Horace Clifford) Westermann

**Medium:** Linoleum cut (black) on thin laid Japanese paper



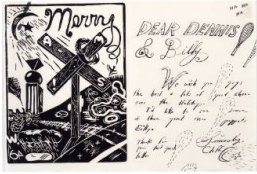
**Title: Disasters in the Sky #5**

**Date:** 1962

**Primary Maker:** H. C. (Horace Clifford) Westermann

**Medium:** Linoleum cut (black) on thin laid Japanese paper

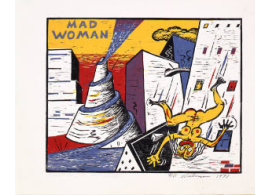




**Title:** Merry Xmas!  
**Date:** 1964  
**Primary Maker:** H. C. (Horace Clifford) Westermann  
**Medium:** Linoleum cut (black) on thin laid Japanese paper



**Title:** Rocket Man and Hindenburg  
**Date:** 1966 and 1966?  
**Primary Maker:** H. C. (Horace Clifford) Westermann  
**Medium:** Linoleum cut (black) on thin laid Japanese paper

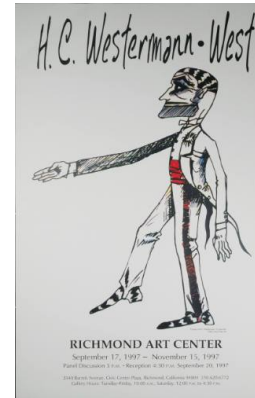


**Title:** Mad Woman  
**Date:** 1971  
**Primary Maker:** H. C. (Horace Clifford) Westermann  
**Medium:** Four-color woodcut (black, yellow, red, blue) on thick wove Japanese paper

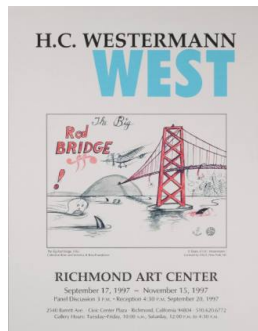
**Title:** The Connecticut Ballroom: Popeye and Pinocchio  
**Date:** 2 April 1976 (postmark)  
**Primary Maker:** H. C. (Horace Clifford) Westermann  
**Medium:** Commercial business-size envelope, imprinted in black ink with detail of final state of Pinocchio figure in key (black) block



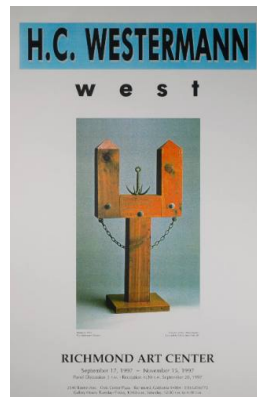
**Title:** Dear Senator Ribicoff: IMPEACH NIXON  
**Date:** 21 October 1973  
**Primary Maker:** H. C. (Horace Clifford) Westermann  
**Medium:** Print on paper



**Title:** Richmond Art Center poster  
**Date:** 1997  
**Primary Maker:** H. C. (Horace Clifford) Westermann  
**Medium:** Inkjet print on paper



**Title:** Richmond Art Center poster  
**Date:** 1997  
**Primary Maker:** H. C. (Horace Clifford) Westermann  
**Medium:** Inkjet print on paper



**Title:** Richmond Art Center poster  
**Date:** 1997  
**Primary Maker:** H. C. (Horace Clifford) Westermann  
**Medium:** Inkjet print on paper



**Title:** Dear Mr President Please Resign  
**Date:** n.d.  
**Primary Maker:** H. C. (Horace Clifford) Westermann  
**Medium:** Black ink on paper



**Title: Dear Senator  
Ribicoff: IMPEACH  
NIXON**

**Date:** 21 October 1973

**Primary Maker:** H. C. (Horace  
Clifford) Westermann

**Medium:** Black ink on paper