

Basic Report



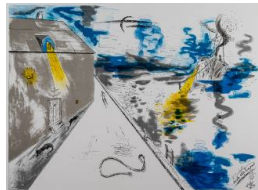
Title: Human Fly (The Human Fly)
Date: 1971
Primary Maker: H. C. (Horace Clifford) Westermann
Medium: One-color woodcut (black) on handmade paper



Title: Red Planet "J" (Red Planet J)
Date: 1967
Primary Maker: H. C. (Horace Clifford) Westermann
Medium: Three-color lithograph (red, blue, yellow)



Title: Six Lithographs: Portfolio
Date: 1972
Primary Maker: H. C. (Horace Clifford) Westermann
Medium: Brown wove paper commercial document portfolio with fabric ribbon ties



Title: Six Lithographs: Death Ship in Port (Deathship in a Port)
Date: 20 January - 23 June 1972
Primary Maker: H. C. (Horace Clifford) Westermann
Medium: Six-color lithograph (yellow, red-blue, green-blue, blue-black, warm black, black)



Title: Six Lithographs: Green River
Date: 25 January - 27 July 1972
Primary Maker: H. C. (Horace Clifford) Westermann
Medium: Eight-color lithograph (yellow, blue, blue-black, red, orange, warm black, green, black)



Title: Six Lithographs: The Lost Planet (Lost Planet)
Date: 27 January - 10 July 1972
Primary Maker: H. C. (Horace Clifford) Westermann
Medium: Seven-color lithograph (yellow, red, blue, green, warm black, blue-black, black)



Title: Six Lithographs: "J" Print (J Print, Christ Landscape, "Sermon on the Mount")
Date: 29 January - 25 July 1972
Primary Maker: H. C. (Horace Clifford) Westermann
Medium: Nine-color lithograph (black, yellow, orange, red, blue, green, violet, warm black, black)



Title: Six Lithographs: An Affair in the Islands
Date: 24 - 27 July 1972
Primary Maker: H. C. (Horace Clifford) Westermann
Medium: Seven-color lithograph (yellow, red, violet, blue, green, blue-black, black)



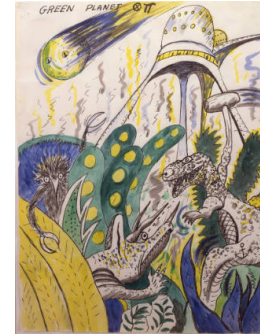
Title: Six Lithographs: Holiday Inn
Date: 26 - 27 July 1972
Primary Maker: H. C. (Horace Clifford) Westermann
Medium: Seven-color lithograph (yellow, red, violet, blue, green, blue-black, black)



Title: Untitled #7
Date: 1968
Primary Maker: H. C. (Horace Clifford) Westermann
Medium: Multi-color lithograph on wove paper



Title: Untitled #16
Date: 1968
Primary Maker: H. C. (Horace Clifford) Westermann
Medium: Two-color lithograph on wove paper



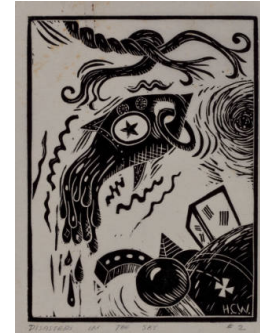
Title: Green Planet
Date: 1967
Primary Maker: H. C. (Horace Clifford) Westermann
Medium: Four-color lithograph on Arches wove paper



Title: The Connecticut Ballroom: Popeye and Pinocchio
Date: 1975
Primary Maker: H. C. (Horace Clifford) Westermann
Medium: Four-color woodcut on Natsume #4007 Japanese wove paper



Title: Disasters in the Sky #1: Bat and Building (Air Disasters in the Sky #1) and Merry Xmas 6 & 2 A Happy New Year
Date: 1962
Primary Maker: H. C. (Horace Clifford) Westermann
Medium: Two one-color linoleum cuts (black), printed side by side on the same bi-fold sheet on thin wove Japan



Title: Disasters in the Sky #2 (Air Disasters in the Sky #2)
Date: 1962 or 1963
Primary Maker: H. C. (Horace Clifford) Westermann
Medium: One-color linoleum cut (black) on thin wove Japan



Title: Disasters in the Sky #4
Date: 1962 or 1963
Primary Maker: H. C. (Horace Clifford) Westermann
Medium: One-color linoleum cut (black) on thin wove Japan



Title: Disasters in the Sky #5 (Air Disasters in the Sky #5)
Date: 1962
Primary Maker: H. C. (Horace Clifford) Westermann
Medium: One-color linoleum cut (black) on thin wove Japan



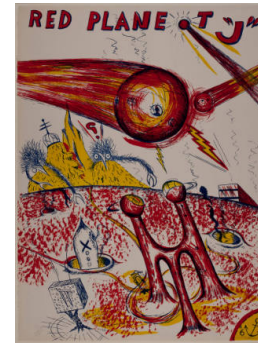
Title: Merry Xmas!
Date: 1964
Primary Maker: H. C. (Horace Clifford) Westermann
Medium: One-color linoleum cut (black) on thin wove Japan



Title: Merry Xmas!
Date: 1964
Primary Maker: H. C. (Horace Clifford) Westermann
Medium: One-color linoleum cut (black) on thin wove Japan



Title: Woman from Indianapolis (Columbia, Missouri)
Date: 1967
Primary Maker: H. C. (Horace Clifford) Westermann
Medium: One-color lithograph (black) on thick wove paper with deckled edges



Title: Red Planet "J"
(Red Planet "J")
Date: 1967
Primary Maker: H. C. (Horace Clifford) Westermann
Medium: Two-color lithograph (blue, red) on thick wove paper with deckled edges



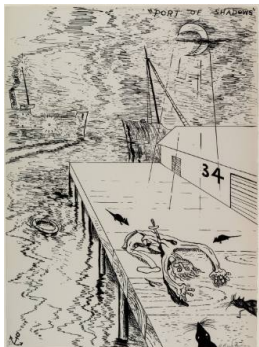
Title: Green Planet
Date: 1967
Primary Maker: H. C. (Horace Clifford) Westermann
Medium: Four-color lithograph (black, blue, green, yellow) on Arches thick wove paper with deckled edges



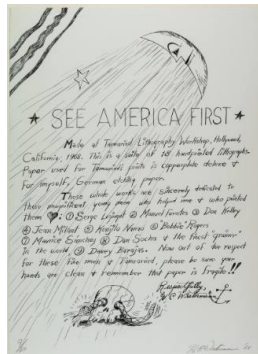
Title: Death Ship of No Port (Deathship of No Port, Red Deathship)
Date: 1967
Primary Maker: H. C. (Horace Clifford) Westermann
Medium: Three-color lithograph (red, black, yellow) on thick Arches wove paper with deckled edges



Title: Death Ship of No Port
Date: 1967
Primary Maker: H. C. (Horace Clifford) Westermann
Medium: Three-color lithograph (red, black, yellow) on thick wove paper with deckled edges



Title: Port of Shadows (Pier 31)
Date: 1967
Primary Maker: H. C. (Horace Clifford) Westermann
Medium: One-color lithograph (black) on thick Arches wove paper with deckled edges



Title: See America First: Untitled (Title/Colophon Page, See America First I)
Date: 23 - 24 October 1968
Primary Maker: H. C. (Horace Clifford) Westermann
Medium: One-color lithograph (black).

Title: See America First
Date: September - October 1968
Primary Maker: H. C. (Horace Clifford) Westermann
Medium: Lithographs and wood burned cover.



**Title: See America First:
Untitled #1 (See America
First II)**

Date: 6 - 11 October 1968

Primary Maker: H. C. (Horace
Clifford) Westermann

Medium: Three-color
lithograph (yellow, red, black).

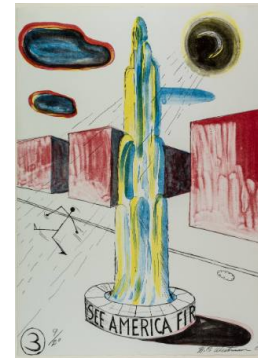


**Title: See America First:
Untitled #2 (See America
First III)**

Date: 5 - 21 September 1968

Primary Maker: H. C. (Horace
Clifford) Westermann

Medium: Four-color lithograph
(yellow, red, blue, black).



**Title: See America First:
Untitled #3 (See America
First IV)**

Date: 6 - 27 September 1968

Primary Maker: H. C. (Horace
Clifford) Westermann

Medium: Four-color lithograph
(yellow, blue, red, black).

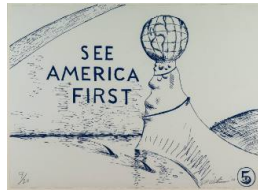


**Title: See America First:
Untitled #4 (See America
First V)**

Date: 13 - 19 September 1968

Primary Maker: H. C. (Horace
Clifford) Westermann

Medium: Two-color lithograph
(yellow, black).

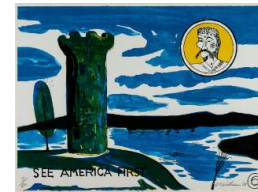


**Title: See America First:
Untitled #5 (See America
First VI)**

Date: 11 - 19 September 1968

Primary Maker: H. C. (Horace
Clifford) Westermann

Medium: One-color lithograph
(blue).



**Title: See America First:
Untitled #6 (See America
First VII)**

Date: 18 September - 2
October 1968

Primary Maker: H. C. (Horace
Clifford) Westermann

Medium: Four-color lithograph
(yellow, blue, light blue, black).

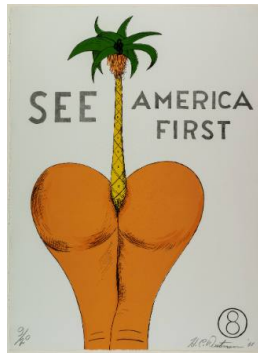


**Title: See America First:
Untitled #7 (See America
First VIII)**

Date: 24 September - 7
October 1968

Primary Maker: H. C. (Horace
Clifford) Westermann

Medium: Multi-color lithograph
(yellow, pink, blue,
combination of yellow, pink,
blue employing Blended Ink
Method, black).



**Title: See America First:
Untitled #8**

Date: 20 September - 3
October 1968

Primary Maker: H. C. (Horace
Clifford) Westermann

Medium: Five-color lithograph
(yellow, orange, light orange,
green, black).



**Title: See America First:
Untitled #9 (See America
First X)**

Date: 1 - 14 October 1968

Primary Maker: H. C. (Horace
Clifford) Westermann

Medium: Four-color lithograph
(yellow, red, blue, black).

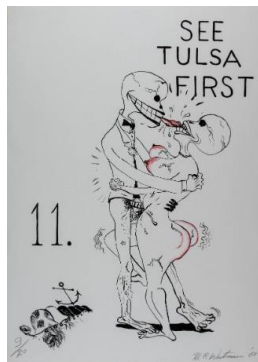


**Title: See America First:
Untitled #10 (See
America First XI)**

Date: 1 - 14 October 1968

Primary Maker: H. C. (Horace Clifford) Westermann

Medium: Four-color lithograph (yellow, red, blue, black).



**Title: See America First:
Untitled #11 (See Tulsa
First, See America First
XII)**

Date: 3 - 9 October 1968

Primary Maker: H. C. (Horace Clifford) Westermann

Medium: Two-color lithograph (red, black).



**Title: See America First:
Untitled #12 (See
America First XIII)**

Date: 8 - 10 October 1968

Primary Maker: H. C. (Horace Clifford) Westermann

Medium: One-color lithograph (black).



**Title: See America First:
Untitled #13 (See
America First XIV)**

Date: 14 - 21 October 1968

Primary Maker: H. C. (Horace Clifford) Westermann

Medium: Two-color lithograph (yellow, black).



**Title: See America First:
Untitled #14 (Big Red,
See America First XV)**

Date: 11 - 22 October 1968

Primary Maker: H. C. (Horace Clifford) Westermann

Medium: Two-color lithograph (red, black).



**Title: See America First:
Untitled #15 (See
America First XVI)**

Date: 16 - 17 October 1968

Primary Maker: H. C. (Horace Clifford) Westermann

Medium: One-color lithograph (black).



**Title: See America First:
Untitled #16 (See
America First XVII)**

Date: 17 - 25 October 1968

Primary Maker: H. C. (Horace Clifford) Westermann

Medium: Two-color lithograph (green, black).



**Title: See America First:
Untitled #17 (See
America First XVIII)**

Date: 23 - 25 October 1968

Primary Maker: H. C. (Horace Clifford) Westermann

Medium: Two-color lithograph (yellow, black).

**Title: See America First:
Untitled (Title/Colophon
Page)**

Date: 23 - 24 October 1968

Primary Maker: H. C. (Horace Clifford) Westermann

Medium: One-color lithograph (black) on German Etching with torn and deckled edges

**Title: See America First:
Untitled (Title/Colophon
Page)**

Date: 23 - 24 October 1968

Primary Maker: H. C. (Horace Clifford) Westermann

Medium: One-color lithograph (black) on Copperplate Deluxe with torn and deckled edges

**Title: See America First:
Untitled #1**

Date: 6 - 11 October 1968

Primary Maker: H. C. (Horace Clifford) Westermann

Medium: Three-color lithograph (yellow, red, black) on German Etching with torn and deckled edges

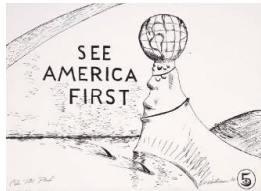


**Title: See America First:
Untitled #2**

Date: 5 - 21 September 1968

Primary Maker: H. C. (Horace Clifford) Westermann

Medium: Four-color lithograph (yellow, red, blue, black) on German Etching with torn and deckled edges



**Title: See America First:
Untitled #5 (See America
First VI)**

Date: 11 - 19 September 1968

Primary Maker: H. C. (Horace Clifford) Westermann

Medium: One-color lithograph (blue) on German Etching with torn and deckled edges

**Title: See America First:
Untitled #5**

Date: 11 - 19 September 1968

Primary Maker: H. C. (Horace Clifford) Westermann

Medium: One-color lithograph (blue) on German Etching with torn and deckled edges

**Title: See America First:
Untitled #7**

Date: 24 September - 7 October 1968

Primary Maker: H. C. (Horace Clifford) Westermann

Medium: Multi-color lithograph (yellow, pink, blue, black) on German Etching with torn and deckled edges

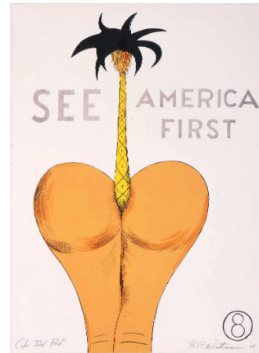


**Title: See America First:
Untitled #7 (See America
First VIII)**

Date: 24 September - 7 October 1968

Primary Maker: H. C. (Horace Clifford) Westermann

Medium: Multi-color lithograph (yellow, pink, blue, black) on German Etching with torn and deckled edges



**Title: See America First:
Untitled #8**

Date: 20 September - 3 October 1968

Primary Maker: H. C. (Horace Clifford) Westermann

Medium: Five-color lithograph (yellow, orange, light orange, green, black) on Copperplate Deluxe with torn and deckled edges



**Title: See America First:
Untitled #8**

Date: 20 September - 3 October 1968

Primary Maker: H. C. (Horace Clifford) Westermann

Medium: Five-color lithograph (yellow, orange, light orange, green, black) on German Etching with torn and deckled edges

**Title: See America First:
Untitled #9 (See America
First X)**

Date: 1 - 14 October 1968

Primary Maker: H. C. (Horace
Clifford) Westermann

Medium: Four-color lithograph
(yellow, red, blue, black) on
German etching with torn and
deckled edges



**Title: See America First:
Untitled #10 (See
America First XI)**

Date: 1 - 14 October 1968

Primary Maker: H. C. (Horace
Clifford) Westermann

Medium: Four-color lithograph
(yellow, red, blue, black) on
German Etching with torn and
deckled edges



**Title: See America First:
Untitled #17 (See
America First XVIII)**

Date: 23 - 25 October 1968

Primary Maker: H. C. (Horace
Clifford) Westermann

Medium: Two-color lithograph
(yellow, black) on German
Etching with torn and deckled
edges



Title: Untitled

Date: 23 September - 3
October 1968

Primary Maker: H. C. (Horace
Clifford) Westermann

Medium: Two-color lithograph
(yellow, black)



Title: Untitled

Date: 23 September - 3
October 1968

Primary Maker: H. C. (Horace
Clifford) Westermann

Medium: Two-color lithograph
(yellow, black)



Title: Human Fly

Date: 1971

Primary Maker: H. C. (Horace
Clifford) Westermann

Medium: One-color woodcut
(black) on hand-made
Japanese mulberry paper



Title: Mad Woman

Date: 1971

Primary Maker: H. C. (Horace
Clifford) Westermann

Medium: Four-color woodcut
(black, yellow, red, blue) on
thick wove Japan



Title: Human Cannonball

Date: 1971

Primary Maker: H. C. (Horace
Clifford) Westermann

Medium: Four-color woodcut
(black, yellow, red, blue) on
thick wove Japan



**Title: Six Lithographs:
Death Ship in Port**

Date: 20 January - 23 June
1972

Primary Maker: H. C. (Horace
Clifford) Westermann

Medium: Six-color lithograph
(yellow, red-blue, green-blue,
blue-black, warm black, black)
on BFK Rives with torn and
deckled edges



Title: Six Lithographs: Green River

Date: 25 January - 27 July 1972

Primary Maker: H. C. (Horace Clifford) Westermann

Medium: Eight-color lithograph (yellow, blue, blue-black, red, orange, warm black, green, black) on BFK Rives with torn and deckled edges



Title: Six Lithographs: The Lost Planet

Date: 27 January - 10 July 1972

Primary Maker: H. C. (Horace Clifford) Westermann

Medium: Seven-color lithograph (yellow, red, blue, green, warm black, blue black, black) on BFK Rives with torn and deckled edges



Title: Six Lithographs: "J" Print

Date: 29 January - 25 July 1972

Primary Maker: H. C. (Horace Clifford) Westermann

Medium: Nine-color lithograph (black, yellow, orange, red, blue, green, violet, warm black, black) on BFK Rives with torn and deckled edges



Title: Six Lithographs: An Affair in the Islands

Date: 24 - 27 July 1972

Primary Maker: H. C. (Horace Clifford) Westermann

Medium: Nine-color lithograph (yellow, orange, red, violet, green, blue, blue-black, warm black, black) on BFK Rives with torn and deckled edges



Title: Six Lithographs: Holiday Inn

Date: 26 - 27 July 1972

Primary Maker: H. C. (Horace Clifford) Westermann

Medium: Seven-color lithograph (yellow, red, violet, blue, green, blue-black, black) on BFK Rives with torn and deckled edges



Title: Crash in the Jungle

Date: 1972

Primary Maker: H. C. (Horace Clifford) Westermann

Medium: Seven-color lithograph (yellow, red, violet, blue, green, blue-black, black) on BFK Rives paper



Title: The Connecticut Ballroom (Title /Colophon Page)

Date: Printed 5 - 6 July 1976

Primary Maker: H. C. (Horace Clifford) Westermann

Medium: One-color woodblock (black) on Natsume #4007 wove paper



Title: The Connecticut Ballroom: The Green Hell

Date: 1975

Primary Maker: H. C. (Horace Clifford) Westermann

Medium: Four-color woodcut (red, green, yellow, black) on Natsume #4007 wove paper



Title: The Connecticut Ballroom: The Green Hell

Date: 1975

Primary Maker: H. C. (Horace Clifford) Westermann

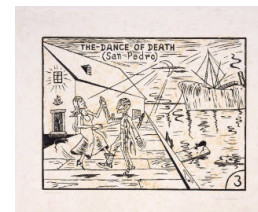
Medium: Four-color (red, yellow, green, black) on Natsume #4007 wove paper



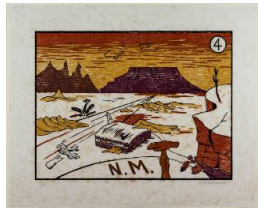
Title: The Connecticut Ballroom: Arctic Death Ship
Date: 1975
Primary Maker: H. C. (Horace Clifford) Westermann
Medium: Three-color woodcut (orange, green, black) on Natsume #4007 wove paper



Title: The Connecticut Ballroom: Dance of Death (The Dance of Death [San Pedro])
Date: 19 August - 13 September 1975
Primary Maker: H. C. (Horace Clifford) Westermann
Medium: Four-color woodcut (gray, red, yellow, black) on Natsume #4007 wove paper



Title: The Connecticut Ballroom: Dance of Death
Date: 19 August - 13 September 1975
Primary Maker: H. C. (Horace Clifford) Westermann



Title: The Connecticut Ballroom: Deserted Airport N.M.
Date: 25 September - 15 October 1975
Primary Maker: H. C. (Horace Clifford) Westermann
Medium: Four-color woodcut (red, violet, yellow, black) on Natsume #4007 wove paper



Title: The Connecticut Ballroom: Deserted Airport N.M.
Date: 25 September - 15 October 1975
Primary Maker: H. C. (Horace Clifford) Westermann



Title: The Connecticut Ballroom: Popeye and Pinocchio
Date: 3 - 27 November 1975
Primary Maker: H. C. (Horace Clifford) Westermann
Medium: Four-color woodcut (red, blue, yellow, black) on Natsume #4007 wove paper



Title: The Connecticut Ballroom: Elephants' Graveyard
Date: 1975
Primary Maker: H. C. (Horace Clifford) Westermann
Medium: One-color woodblock (black) on Natsume #4007 wove paper



Title: Frog
Date: 1976
Primary Maker: H. C. (Horace Clifford) Westermann



Title: For Richard/From Cliff
Date: 1977
Primary Maker: H. C. (Horace Clifford) Westermann
Medium: One-color woodcut (black) on Natsume #4007 Japanese wove paper



Title: Trial color proof
for The Connecticut
Ballroom: The Green Hell
Date: 1975 - 1976
Primary Maker: H. C. (Horace
Clifford) Westermann
Medium: Color inks on
Natsume #4007 Japanese
wove paper



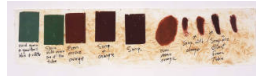
Title: Trial color proof
for The Connecticut
Ballroom: The Green Hell
Date: 1975 - 1976
Primary Maker: H. C. (Horace
Clifford) Westermann
Medium: Color inks on
Natsume #4007 Japanese
wove paper



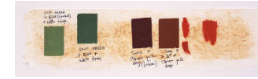
Title: Trial color proof
for The Connecticut
Ballroom: The Green Hell
Date: 1975 - 1976
Primary Maker: H. C. (Horace
Clifford) Westermann
Medium: Color inks on
Natsume #4007 Japanese
wove paper



Title: Trial color proof
for The Connecticut
Ballroom: The Green Hell
Date: 1975 - 1976
Primary Maker: H. C. (Horace
Clifford) Westermann
Medium: Color inks on
Natsume #4007 Japanese
wove paper



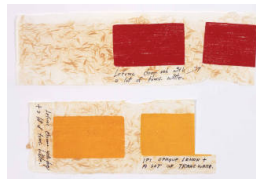
Title: Trial color proof
for The Connecticut
Ballroom: The Arctic
Death Ship
Date: 1975 - 1976
Primary Maker: H. C. (Horace
Clifford) Westermann
Medium: Color inks on
Natsume #4007 Japanese
wove paper



Title: Trial color proof
for The Connecticut
Ballroom: The Arctic
Death Ship
Date: 1975 - 1976
Primary Maker: H. C. (Horace
Clifford) Westermann
Medium: Color inks on
Natsume #4007 Japanese
wove paper



Title: Trial color proof
for The Connecticut
Ballroom: Arctic Death
Ship
Date: 1975 - 1976
Primary Maker: H. C. (Horace
Clifford) Westermann
Medium: Color inks on
Natsume #4007 Japanese
wove paper



Title: Trial color proof
for The Connecticut
Ballroom: Dance of
Death
Date: 1975 - 1976
Primary Maker: H. C. (Horace
Clifford) Westermann
Medium: Color inks on
Natsume #4007 Japanese
wove paper



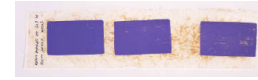
Title: Trial color proof
for The Connecticut
Ballroom: Dance of
Death
Date: 1975 - 1976
Primary Maker: H. C. (Horace
Clifford) Westermann
Medium: Color inks on
Natsume #4007 Japanese
wove paper



Title: Trial color proof
for The Connecticut
Ballroom: Deserted
Airport N.M.
Date: 1975 - 1976
Primary Maker: H. C. (Horace
Clifford) Westermann
Medium: Color inks on
Natsume #4007 Japanese
wove paper



Title: Trial color proof
for The Connecticut
Ballroom: Deserted
Airport N.M.
Date: 1975 - 1976
Primary Maker: H. C. (Horace
Clifford) Westermann
Medium: Color inks on
Natsume #4007 Japanese
wove paper



Title: Trial color proof
for The Connecticut
Ballroom: Deserted
Airport N.M.
Date: 1975 - 1976
Primary Maker: H. C. (Horace
Clifford) Westermann
Medium: Color inks on
Natsume #4007 Japanese
wove paper



Title: Trial color proof
for The Connecticut
Ballroom: Deserted
Airport N.M.
Date: 1975 - 1976
Primary Maker: H. C. (Horace
Clifford) Westermann
Medium: Color inks on
Natsume #4007 Japanese
wove paper



Title: Trial color proof
for The Connecticut
Ballroom: Deserted
Airport N.M.
Date: 1975 - 1976
Primary Maker: H. C. (Horace
Clifford) Westermann
Medium: Color inks on
Natsume #4007 Japanese
wove paper



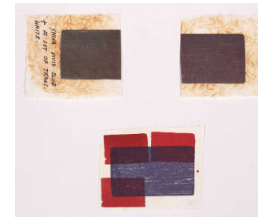
Title: Trial color proof
for The Connecticut
Ballroom: Deserted
Airport N.M.
Date: 1975 - 1976
Primary Maker: H. C. (Horace
Clifford) Westermann
Medium: Color inks on
Natsume #4007 Japanese
wove paper



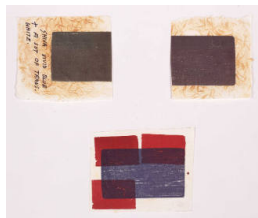
Title: Trial color proof
for The Connecticut
Ballroom: Deserted
Airport N.M.
Date: 1975 - 1976
Primary Maker: H. C. (Horace
Clifford) Westermann
Medium: Color inks on
Natsume #4007 Japanese
wove paper



Title: Trial color proof
for The Connecticut
Ballroom: Popeye and
Pinocchio
Date: 1975 - 1976
Primary Maker: H. C. (Horace
Clifford) Westermann
Medium: Color inks on
Natsume #4007 Japanese
wove paper



Title: Trial color proof
for The Connecticut
Ballroom: Popeye and
Pinocchio
Date: 1975 - 1976
Primary Maker: H. C. (Horace
Clifford) Westermann
Medium: Color inks on
Natsume #4007 Japanese
wove paper



Title: Trial color proof for The Connecticut Ballroom: Popeye and Pinocchio
Date: 1975 - 1976
Primary Maker: H. C. (Horace Clifford) Westermann
Medium: Color inks on Natsume #4007 Japanese wove paper



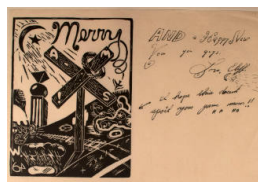
Title: Trial color proof for The Connecticut Ballroom: Popeye and Pinocchio
Date: 1975 - 1976
Primary Maker: H. C. (Horace Clifford) Westermann
Medium: Color inks on Natsume #4007 Japanese wove paper



Title: Trial color proof for The Connecticut Ballroom: Popeye and Pinocchio
Date: 1975 - 1976
Primary Maker: H. C. (Horace Clifford) Westermann
Medium: Color inks on Natsume #4007 Japanese wove paper



Title: Untitled
Date: 1972/2000
Primary Maker: H. C. (Horace Clifford) Westermann
Medium: Two-color photogravure (light brown, dark brown) on Somerset wove paper



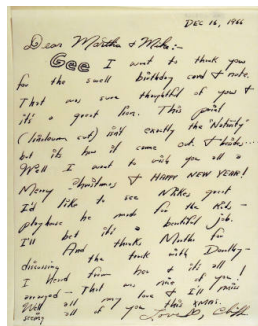
Title: Christmas Card
Date: 1964
Primary Maker: H. C. (Horace Clifford) Westermann
Medium: Linocut with little cutouts, an embellished cigar box decoration, an embellished postcard for Mike, an old postcard, and a Melrose Baking Powder card



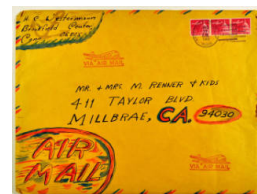
Title: Letter and Linocuts
Date: 1966
Primary Maker: H. C. (Horace Clifford) Westermann
Medium: Two linocuts on one sheet



Title: Letter and Linocuts
Date: 1966
Primary Maker: H. C. (Horace Clifford) Westermann
Medium: Letter and two linocuts on one sheet



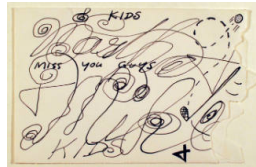
Title: Letter and Linocuts
Date: December 16, 1966
Primary Maker: H. C. (Horace Clifford) Westermann
Medium: Letter and two linocuts on one sheet



Title: Letter and Linocuts
Date: December 16, 1966
Primary Maker: H. C. (Horace Clifford) Westermann
Medium: Letter and two linocuts on one sheet



Title: Letter and Linocuts
Date: 1966
Primary Maker: H. C. (Horace Clifford) Westermann
Medium: Letter and two linocuts on one sheet



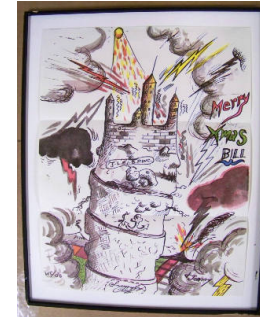
Title: Letter and Linocuts
Date: 1966
Primary Maker: H. C. (Horace Clifford) Westermann
Medium: Letter and two linocuts on one sheet

Title: See America First
Date: 1968
Primary Maker: H. C. (Horace Clifford) Westermann
Medium: Colored lithographs in wooden case.



Title: Untitled
Date: June 1968
Primary Maker: H. C. (Horace Clifford) Westermann
Medium: Offset color lithograph?

Title: Untitled
Date: June 1968
Primary Maker: H. C. (Horace Clifford) Westermann
Medium: Offset color lithograph?



Title: Untitled
Date: June 1968
Primary Maker: H. C. (Horace Clifford) Westermann
Medium: Offset color lithograph?

Title: Untitled
Date: June 1968
Primary Maker: H. C. (Horace Clifford) Westermann
Medium: Offset color lithograph?



Title: Untitled
Date: June 1968
Primary Maker: H. C. (Horace Clifford) Westermann
Medium: Offset color lithograph?

Title: Untitled
Date: June 1968
Primary Maker: H. C. (Horace Clifford) Westermann
Medium: Offset color lithograph?



Title: Untitled

Date: June 1968

Primary Maker: H. C. (Horace Clifford) Westermann

Medium: Offset color lithograph?

Title: Untitled

Date: June 1968

Primary Maker: H. C. (Horace Clifford) Westermann

Medium: Offset color lithograph?

Title: Untitled

Date: June 1968

Primary Maker: H. C. (Horace Clifford) Westermann

Medium: Offset color lithograph?

Title: Untitled

Date: June 1968

Primary Maker: H. C. (Horace Clifford) Westermann

Medium: Offset color lithograph?



Title: Disasters in the Sky #1 (Bat and Building, Air Disasters in the Sky #1) and Merry Xmas 6 & 2 A Happy New Year Cliff

Date: 1962

Primary Maker: H. C. (Horace Clifford) Westermann

Medium: Linoleum cut (black) on thin laid Japanese paper (left) and linoleum cut (black) with additional linoleum cut or rubber stamp (red) on thin laid Japanese paper (right)



Title: Disasters in the Sky #2 (Air Disasters in the Sky #2)

Date: 1962

Primary Maker: H. C. (Horace Clifford) Westermann

Medium: Linoleum cut (black) on thin laid Japanese paper



Title: Disasters in the Sky #3

Date: 1962 or 1963

Primary Maker: H. C. (Horace Clifford) Westermann

Medium: Linoleum cut (black) on thin laid Japanese paper



Title: Disasters in the Sky #4

Date: 1963

Primary Maker: H. C. (Horace Clifford) Westermann

Medium: Linoleum cut (black) on thin laid Japanese paper

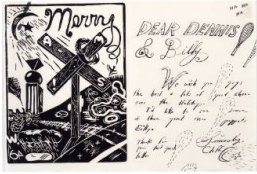


Title: Disasters in the Sky #5

Date: 1962

Primary Maker: H. C. (Horace Clifford) Westermann

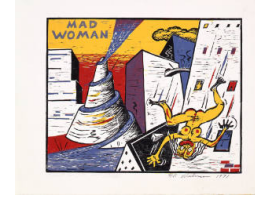
Medium: Linoleum cut (black) on thin laid Japanese paper



Title: Merry Xmas!
Date: 1964
Primary Maker: H. C. (Horace Clifford) Westermann
Medium: Linoleum cut (black) on thin laid Japanese paper



Title: Rocket Man and Hindenburg
Date: 1966 and 1966?
Primary Maker: H. C. (Horace Clifford) Westermann
Medium: Linoleum cut (black) on thin laid Japanese paper

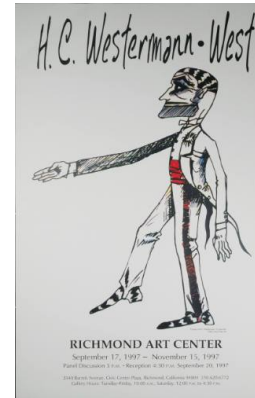


Title: Mad Woman
Date: 1971
Primary Maker: H. C. (Horace Clifford) Westermann
Medium: Four-color woodcut (black, yellow, red, blue) on thick wove Japanese paper

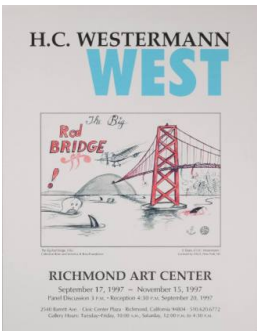
Title: The Connecticut Ballroom: Popeye and Pinocchio
Date: 2 April 1976 (postmark)
Primary Maker: H. C. (Horace Clifford) Westermann
Medium: Commercial business-size envelope, imprinted in black ink with detail of final state of Pinocchio figure in key (black) block



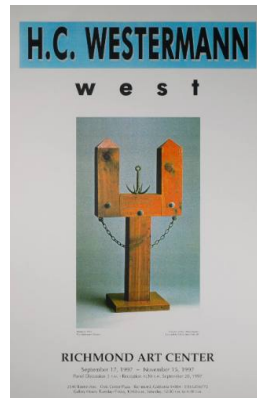
Title: Dear Senator Ribicoff: IMPEACH NIXON
Date: 21 October 1973
Primary Maker: H. C. (Horace Clifford) Westermann
Medium: Print on paper



Title: Richmond Art Center poster
Date: 1997
Primary Maker: H. C. (Horace Clifford) Westermann
Medium: Inkjet print on paper



Title: Richmond Art Center poster
Date: 1997
Primary Maker: H. C. (Horace Clifford) Westermann
Medium: Inkjet print on paper



Title: Richmond Art Center poster
Date: 1997
Primary Maker: H. C. (Horace Clifford) Westermann
Medium: Inkjet print on paper



Title: Dear Mr President Please Resign
Date: n.d.
Primary Maker: H. C. (Horace Clifford) Westermann
Medium: Black ink on paper



**Title: Dear Senator
Ribicoff: IMPEACH
NIXON**

Date: 21 October 1973

Primary Maker: H. C. (Horace
Clifford) Westermann

Medium: Black ink on paper