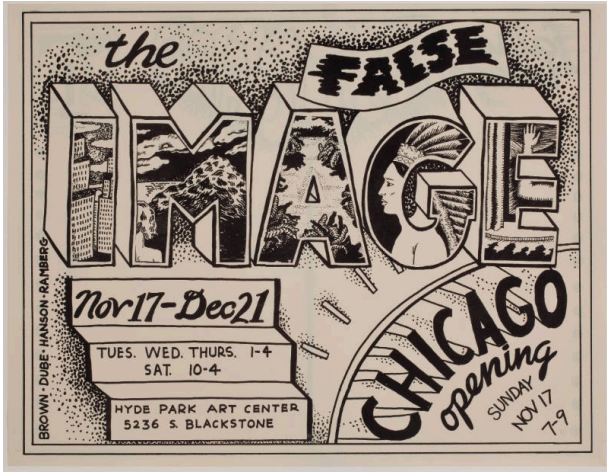


# Basic Detail Report

---



1968; printed recto and verso

## Dimensions

Sheet: 17 3/8 x 22 1/2 in. (44.1 x 57.2 cm)

## The False Image

### Date

1968

### Primary Maker

Roger Brown

### Medium

Offset lithograph commercially printed on coated wove paper, based on two exquisite corpse drawings made for the purpose by the four artists

### Description

Poster/invitation for the first False Image group exhibition at the Hyde Park Art Center, Chicago, IL, 17 November - 21 December