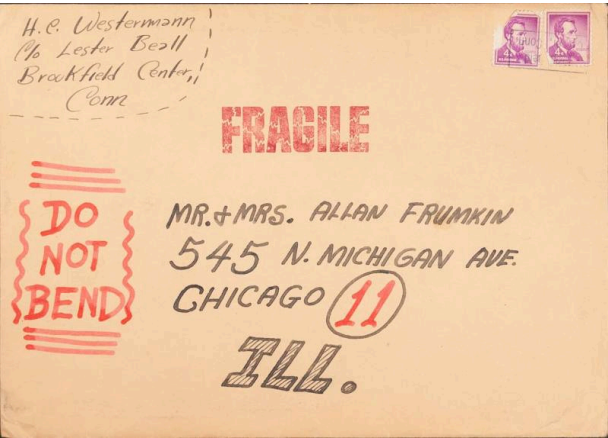


Basic Detail Report



Envelope: 7 1/2 x 10 1/2 in. (19.1 x 26.7 cm)

Envelope

Date
n.d.

Primary Maker
H. C. (Horace Clifford) Westermann

Medium
Black and red ink on manila envelope with USPS stamps

Description
Envelope addressed to Allan and Jean Frumkin. Envelope empty.

Dimensions