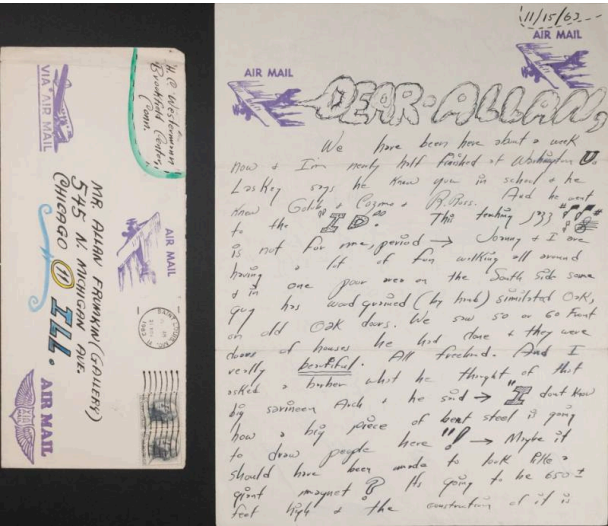


# Basic Detail Report



in. (10.8 × 24.1 cm)

## Letter and Envelope

**Date**  
15 November 1963

**Primary Maker**  
H. C. (Horace Clifford) Westermann

**Medium**  
Black and purple ink with watercolor on paper and envelope with USPS stamps

**Description**  
Handwritten 1-page letter, double-sided, and envelope, from H. C. to Allan Frumkin.

**Dimensions**  
Letter: 11 7/8 × 8 7/8 in. (30.2 × 22.5 cm) Envelope: 4 1/4 × 9 1/2