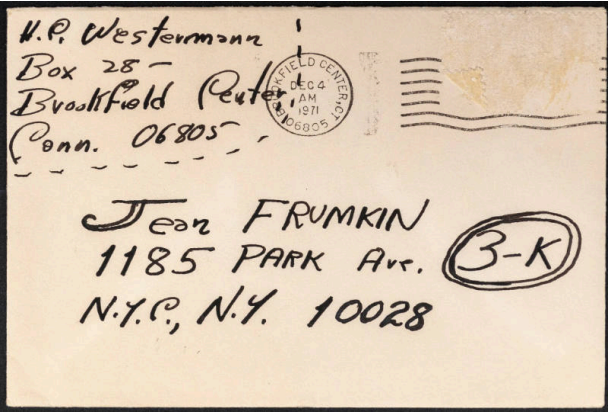


Basic Detail Report



Envelope: 4 x 6 in. (10.2 x 15.2 cm)

Envelope

- Date**
circa 1971
- Primary Maker**
H. C. (Horace Clifford) Westermann
- Medium**
Black ink on envelope
- Description**
Envelope from H. C. to Jean Frumkin
- Dimensions**