

# Basic Report

---



**Title:** Actor's Mask of a Comic Old Man or Mask of Dionysus  
**Date:** circa 4th century B.C.E.  
**Medium:** Earthenware

**Title:** Alabastron  
**Date:** n.d.  
**Medium:** Stone

**Title:** Alabastron  
**Date:** n.d.  
**Medium:** Stone

**Title:** Alabastron  
**Date:** n.d.  
**Medium:** Marble

**Title:** Alabastron  
**Date:** n.d.  
**Medium:** Alabaster

**Title:** Alabastron  
**Date:** n.d.  
**Medium:** Slip-painted earthenware



**Title:** Alabastron  
**Date:** n.d.  
**Medium:** Earthenware with slip-painted decoration



**Title:** Alabastron  
**Date:** n.d.  
**Medium:** Earthenware with slip-painted decoration



**Title:** Alabastron  
**Date:** n.d.  
**Medium:** Earthenware with slip-painted decoration



**Title: Amphora**  
**Date:** circa late 7th century B.  
C.E.  
**Medium:** Earthenware with  
slip-painted decoration

**Title: Amphora Handle**  
**Date:** circa 3rd century B.C.E.  
**Medium:** Unglazed  
earthenware



**Title: Ancient Glass Bowl**  
**Date:** n.d.

**Title: Antoninianus of  
Claudius II: Radiate  
Head of Claudius  
(obverse), Aequitas  
Standing and Holding  
Scales and Cornucopia  
(reverse)**  
**Date:** 268 - 270  
**Primary Maker:** Unknown  
Artist  
**Medium:** Struck silver

**Title: Antoninianus of  
Flacus Constantius:  
Radiate Head of  
Constantinus (obverse),  
A Prince Standing with  
Jupiter (reverse)**  
**Date:** 295 - 305  
**Primary Maker:** Unknown  
Artist  
**Medium:** Struck silver

**Title: Antoninianus of  
Flacus Constantius:  
Radiate Head of  
Constantinus (obverse),  
Inscription in a Wreath  
(reverse)**  
**Date:** 295 - 305  
**Primary Maker:** Unknown  
Artist  
**Medium:** Struck silver

**Title: Antoninianus of  
Galerius Valerius  
Maximinianus: Radiate  
Head of Galerius  
(obverse), the Emperor  
Standing With Jupiter  
(reverse)**  
**Date:** 293 - 305  
**Primary Maker:** Unknown  
Artist  
**Medium:** Struck silver

**Title: Antoninianus of  
Gallienus: Radiate Head  
of Gallienus (obverse),  
Standing Soldier  
Holding Spear and  
Resting on Shield  
(reverse)**  
**Date:** 267  
**Primary Maker:** Unknown  
Artist  
**Medium:** Struck silver

**Title: Antoninianus of  
Lucianus Licinius:  
Radiate Bust of Licinius  
(obverse), Standing  
Jupiter (reverse)**  
**Date:** 307 - 324  
**Primary Maker:** Unknown  
Artist  
**Medium:** Struck silver

**Title:** Antoninianus of  
Lucius Domitius  
Aurelianus: Radiate  
head of Aurelian  
(obverse), the Emporer  
Standing with Concordia  
(reverse)  
**Date:** 270 - 275  
**Primary Maker:** Unknown  
Artist  
**Medium:** Struck silver

**Title:** Antoninianus of  
Maximinianus  
Herculeus: Radiate Head  
of Maximaianus  
(obverse), the Empereor  
Standing with Jupiter  
(reverse)  
**Date:** 292 - 295  
**Primary Maker:** Unknown  
Artist  
**Medium:** Struck silver



**Title:** Aphrodite from  
Aphrodisias  
**Date:** 2nd century C.E.  
**Medium:** Carved marble

**Title:** Architectural  
Fragment: Antefix as a  
Mask of a Satyr  
**Date:** n.d.  
**Medium:** Earthenware with  
cold-painted decoration

**Title:** Architectural  
Fragment: Fragment  
from an Ionic Capital  
**Date:** n.d.  
**Medium:** Marble

**Title:** Architectural  
Fragment: Fragment of a  
Brick Stamped with a  
Seal (Possibly of the  
Manufacturer)  
**Date:** n.d.  
**Medium:** Earthenware

**Title:** Architectural  
Fragment: Fragment of a  
Palmette Antefix, from  
Bassae, Possibly from  
an Altar  
**Date:** 4th century B.C.E.  
**Medium:** Marble

**Title:** Argive Late  
Geometric Vase  
Fragment: Female  
Chorus Performing a  
Ring Dance  
**Date:** circa 725 - 700 B.C.E.  
**Medium:** Earthenware (buff)  
with black painted decoration



**Title:** Aryballos  
**Date:** 2nd century  
**Medium:** Blown dark-blue  
glass with applied handles



**Title:** Aryballos  
**Date:** n.d.  
**Medium:** Earthenware with slip-painted decoration



**Title:** Aryballos  
**Date:** n.d.  
**Medium:** Earthenware with slip-painted decoration



**Title:** Aryballos  
**Date:** late 6th century B.C.E.  
**Medium:** Earthenware with slip-painted decoration

**Title:** Athena in Headdress (after Graeco-Roman original by Aspasio)  
**Date:** 20th century  
**Primary Maker:** Aspasio  
**Medium:** Plaster, after red jasper original

**Title:** Attic Poros fragment  
**Date:** n.d.  
**Primary Maker:** Unknown Artist  
**Medium:** White chalk or limestone

**Title:** Attic Poros fragment  
**Date:** n.d.  
**Primary Maker:** Unknown Artist  
**Medium:** White chalk or limestone

**Title:** Attic Poros fragment  
**Date:** n.d.  
**Primary Maker:** Unknown Artist  
**Medium:** White marble



**Title:** Balsamarium  
**Date:** 1st century  
**Medium:** Clear glass



**Title:** Balsamarium  
**Date:** 250 - 300  
**Medium:** Clear blue glass





**Title: Balsamarium, Candlestick type**  
**Date:** 2nd - 4th century  
**Medium:** Green glass

**Title: Base Fragment of a Beaker**  
**Date:** n.d.  
**Medium:** Glass

**Title: Base ring bottle**  
**Date:** 1450 - 1350 B.C.E.  
**Medium:** Clay with white slip and paint

**Title: Base Ring Bowl**  
**Date:** 1450 - 1350 B.C.E.  
**Medium:** Pottery



**Title: Base Ring Bowl**  
**Date:** 1450 - 1350 B.C.E.  
**Medium:** Pottery



**Title: Base-Ring Jug (or Bilbil)**  
**Date:** 1425/15 - 1340 B.C.E.  
**Medium:** Slip-painted earthenware



**Title: Baubo**  
**Date:** 1st - 2nd century  
**Medium:** Cast bronze

**Title: Beads**  
**Date:** n.d.  
**Medium:** Glass



**Title: Beaker**  
**Date:** 1st - 2nd century  
**Medium:** Mold-blown purple glass with lotus bud/almond knop design

**Title: Beaker**  
**Date:** n.d.  
**Medium:** Glass

**Title: Beaker**  
**Date:** n.d.  
**Medium:** Glass

**Title: Beaker**  
**Date:** n.d.  
**Medium:** Green glass



**Title: Beaker**  
**Date:** 1st century  
**Medium:** Clear blue glass



**Title: Beaker**  
**Date:** 2nd century  
**Medium:** Clear yellow-green glass



**Title: Beaker**  
**Date:** 2nd century  
**Medium:** Clear blue glass



**Title: Beaker**  
**Date:** 2nd century  
**Medium:** Clear glass



**Title: Beaker**  
**Date:** 2nd century  
**Medium:** Clear blue glass



**Title: Beaker**  
**Date:** 2nd century  
**Medium:** Clear green glass



**Title: Beaker**  
**Date:** late 2nd - 3rd century  
**Medium:** Indented clear glass



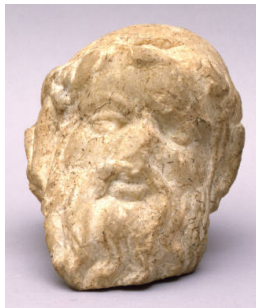
**Title: Beaker, Bowltype**  
**Date:** 1st century  
**Medium:** Clear green glass



**Title: Beaker, Jar Type**  
**Date:** 2nd century  
**Medium:** Clear green glass



**Title: Beaker, Jar Type**  
**Date:** 2nd century  
**Medium:** Clear yellow glass



**Title: Bearded Head (A Philosopher?)**  
**Date:** circa 3rd century B.C.E.  
**Medium:** Marble

**Title: Bell-Shaped Weight (?)**  
**Date:** n.d.  
**Medium:** Bronze



**Title: Belt Buckle (in the Shape of a Cross)**

**Date:** 6th century

**Medium:** Cast bronze



**Title: Belt Buckle (with a Cross)**

**Date:** 6th century

**Medium:** Cast bronze

**Title: Bichrome Bowl**

**Date:** circa 1050 - 950 B.C.E.

**Medium:** Reddish clay with buff slip and black and red paint

**Title: Bichrome III Bowl**

**Date:** circa 900 - 700 B.C.E.

**Medium:** Earthenware (red) with light-colored slip and black and red painted decoration



**Title: Bichrome IV Amphora**

**Date:** 700 - 475 B.C.E.

**Medium:** Earthenware (light buff) with light slip and black and purple painted decoration



**Title: Bichrome Jug**

**Date:** circa 950 - 850 B.C.E.

**Medium:** Reddish clay with black and red paint



**Title: Bichrome Red I (IV) Bowl**

**Date:** 750 - 550 B.C.E.

**Medium:** Earthenware (red) with buff slip and black and reddish-purple painted decoration



**Title: Bichrome Red I (IV) Jug**

**Date:** circa 700 - 550 B.C.E.

**Medium:** Earthenware (red) with reddish slip and red and black accessory painted decoration

**Title: Bird**

**Date:** 4th - 3rd century B.C.E.

**Medium:** Earthenware with slip-painted decoration



**Title: Bird (Dove?)**

**Date:** n.d.

**Medium:** Bronze



**Title: Black-Figure Amphora**

**Date:** circa 530 B.C.E.

**Medium:** Earthenware with slip-painted decoration



**Title: Black-Figure Column Krater Handle Fragment: Two Heads (male and female) in Profile**

**Date:** 7th - early 6th century B. C.E.

**Medium:** Earthenware with slip-painted decoration



**Title: Black-Figure Dinors Rim Fragment: Ivy Leaves, Chariot Race, Warriors, Part of a Warship**

**Date:** circa 540 - 530 B.C.E.

**Medium:** Earthenware with slip-painted decoration



**Title: Black-Figure Eye Kylix: Dionysos Seated Between Two Saytrs**

**Date:** circa 510 - 100 B.C.E.

**Medium:** Earthenware with slip-painted decoration

**Title: Black Figure Kabiric Kantharos Fragment: Procession or Festivity, Acrobats with Three-legged Table**

**Date:** 410 - 400 B.C.E.

**Medium:** Earthenware with slip-painted and incised decoration

**Title: Black Figure Kabiric Kantharos Fragment: Scene of Banquesting, Servants**

**Date:** 5th century B.C.E.

**Medium:** Earthenware with slip-painted and incised decoration

**Title: Black Figure Kabiric Askos Fragment: Goat being held by horns**

**Date:** 420 - 400 B.C.E.

**Medium:** Earthenware with slip-painted and incised decoration

**Title: Black-Figure Kylix: A Satyr Carrying a Garland and Vine Following a Maenad with Two Garlands and Vines**

**Date:** n.d.

**Medium:** Earthenware with slip-painted decoration

**Title: Black-Figure Kylix Fragment**

**Date:** late 6th century B.C.E.

**Medium:** Earthenware with slip-painted decoration

**Title: Black-Figure Lekythos**

**Date:** circa 510 - 500 B.C.E.

**Medium:** Earthenware with slip-painted decoration

**Title: Black-Figure Lekythos**

**Date:** circa 510 - 500 B.C.E.

**Medium:** Earthenware with slip-painted decoration



**Title: Black-Figure Lekythos**

**Date:** circa late 6th - early 5th century B.C.E.

**Medium:** Earthenware with slip-painted decoration

**Title: Black-Figure Lekythos: Geometric and Palmette Designs**

**Date:** circa 470 - 450 B.C.E.

**Medium:** Earthenware with slip-painted and cold-painted decoration



**Title: Black-Figure Lekythos: Two Pairs of Women, Each Wearing a Dress and Mantle, with One Seated and One Standing**

**Date:** n.d.

**Medium:** Earthenware with slip-painted decoration



**Title: Black-Figure  
Loutrophoros Amphora**  
**Date:** circa 480 - 470 B.C.E.  
**Medium:** Earthenware with  
slip-painted and cold-painted  
decoration

**Title: Black-Figure  
Miniature Panathenaic  
Amphora**  
**Date:** n.d.  
**Medium:** Earthenware with  
slip-painted decoration



**Title: Black-Figure  
Nikosthenic Amphora  
Handle Fragment:  
Satyr's Head with Border  
Design on Fragment**  
**Date:** circa 535 - 520 B.C.E.  
**Primary Maker:** Unknown  
Artist  
**Medium:** Earthenware with  
slip-painted decoration

**Title: Black-Figure  
Panathenaic Amphora  
Fragment: Inscription**  
**Date:** 352 - 351 B.C.E.  
**Medium:** Earthenware with  
slip-painted decoration

**Title: Black-Figure  
Panathenaic Amphora  
Fragment: Letters and  
Line**  
**Date:** n.d.  
**Medium:** Earthenware with  
slip-painted decoration



**Title: Black-Figure  
Panathenaic Amphora  
Fragment: Two Runners**  
**Date:** circa 530 B.C.E.  
**Medium:** Earthenware with  
slip-painted decoration





**Title:** Black-Figure Pelike: Two Visitors to the Sphinx (Oedipus Confronting the Theban Sphinx?) (obverse), Hermes Playing the Flute to two Satyrs (reverse)

**Date:** circa 490 B.C.E.

**Primary Maker:** Eucharides Painter

**Medium:** Earthenware with slip-painted decoration



**Title:** Black-Figure Plate: Prancing Goat

**Date:** circa 510 - 490 B.C.E.

**Medium:** Earthenware with slip-painted decoration

**Title:** Black-Figure Sherd: Athena Featured

**Date:** circa 540 - 530 B.C.E.

**Primary Maker:** Swing Painter

**Medium:** Earthenware with slip-painted decoration

**Title:** Black-Figure Skyphos

**Date:** n.d.

**Medium:** Earthenware with slip-painted decoration

**Title:** Black-Figure Squat Lekythos

**Date:** early 5th century B.C.E.

**Medium:** Clay with black glaze and white and red slip decoration

**Title:** Black-Figure Stand Fragment (base):

**Ganymede with Hoop on Back**

**Date:** n.d.

**Medium:** Earthenware with slip-painted decoration

**Title:** Black Figure Vessel Sherd

**Date:** n.d.

**Medium:** Earthenware with slip-painted decoration

**Title:** Black-Figure Vessel Sherd: Owl and Human Foot

**Date:** late 6th century B.C.E.

**Medium:** Earthenware with slip-painted decoration

**Title:** Black-Figure Vessel Sherd: Part of a Human (Shoulder and hair)

**Date:** early 5th century B.C.E.

**Medium:** Earthenware with slip-painted decoration



---

**Title: Black-Glazed Kylix**

**Date:** circa 5th century B.C.E.

**Medium:** Earthenware with slip-painted decoration

**Title: Black-on-Red I (III)**

**Jug**

**Date:** circa 900 - 700 B.C.E.

**Medium:** Earthenware (red) with red-brown slip and matte black painted decoration

**Title: Black-on-Red I (III) or II (IV) Jug**

**Date:** circa 850 - 600 B.C.E.

**Medium:** Earthenware (reddish) with lustrous red slip and black accessory painted decoration

---

**Title: Black-on-Red III (V) Juglet**

**Date:** circa 600 - 475 B.C.E.

**Medium:** Earthenware (reddish) with red slip and black painted decoration



**Title: Black Slip Flask**

**Date:** circa 1750 - 1700 B.C.E.

**Medium:** Light clay, polished black slip

**Title: Bone fragments**

**Date:** n.d.

**Primary Maker:** Unknown Artist

**Medium:** Bone

---

**Title: Bone hairpin**

**Date:** n.d.

**Medium:** Ivory



**Title: Bow Fibula**

**Date:** 3rd - 4th century

**Medium:** Gilt bronze



**Title: Bowl**

**Date:** n.d.

**Medium:** Bronze

---

**Title: Bowl**  
**Date:** n.d.  
**Medium:** Glass

**Title: Bowl**  
**Date:** n.d.  
**Medium:** Earthenware with  
slip-painted decoration

**Title: Bowl**  
**Date:** n.d.  
**Medium:** Earthenware

---

**Title: Bowl**  
**Date:** circa 3rd century B.C.E.  
**Medium:** Earthenware with  
slip-painted decoration

**Title: Bowl**  
**Date:** 5th century B.C.E.  
**Medium:** Slip-painted (in  
black) earthenware

**Title: Bowl Fragment**  
**Date:** first half of 1st century  
**Medium:** Slip-glazed  
earthenware with stamped  
decoration

---

**Title: Bowl Fragment**  
**Date:** circa 450 B.C.E.  
**Medium:** Slip-glazed  
earthenware with black glaze  
and stamped decoration

**Title: Bowl Fragment**  
**Date:** n.d.  
**Primary Maker:** Unknown  
Artist  
**Medium:** Earthenware, slip-  
glazed with molded decoration  
(Megarian ware)

**Title: Bowl Fragment**  
**Date:** circa 250 B.C.E.  
**Primary Maker:** Unknown  
Artist  
**Medium:** Slip-glazed  
earthenware with molded  
decoration (Megarian ware)

---

**Title: Bowl Fragment**

**Date:** circa 3rd century B.C.E.

**Primary Maker:** Unknown

Artist

**Medium:** Slip-glazed earthenware with black paint and molded decoration (Megarian ware)

---

**Title: Bowl Fragment**

**with Relief of**

**Kalathiskos Dancer**

**Date:** 15 B.C.E. - 30 C.E.

**Medium:** Slip-glazed earthenware with molded decoration (Arrentine ware)

---

**Title: Bowl or Casserole Lid**

**Date:** 3rd century

**Medium:** Earthenware

---

**Title: Bowl Sherd**

**Date:** n.d.

**Medium:** Pink-orange clay with black paint

---

**Title: Boy leaning on herm**

**Date:** 2nd - 1st century B.C.E.

**Medium:** Unglazed earthenware

---

**Title: Brick**

**Date:** n.d.

**Primary Maker:** Unknown  
Artist

---

**Title: Brick**

**Date:** n.d.

**Primary Maker:** Unknown  
Artist

---

**Title: Brick**

**Date:** n.d.

**Primary Maker:** Unknown  
Artist

---

**Title: Bronze Age Handle Fragment**

**Date:** n.d.

**Medium:** Buff clay with dark orange-brown paint

---

**Title: Bronze Age  
Pottery Sherd**

**Date:** n.d.

**Medium:** Buff clay with light  
and dark brown paint

**Title: Bronze Age  
Pottery Sherd**

**Date:** n.d.

**Medium:** Clay with brown glaze

**Title: Bronze Age Sherd**

**Date:** n.d.

**Medium:** Buff clay with orange  
/brown paint

---

**Title: Bronze Age Sherd**

**Date:** n.d.

**Medium:** Buff clay with slip  
and paint, curved spiral pattern

**Title: Bronze Age Sherd**

**Date:** n.d.

**Medium:** Buff clay with brown  
paint

**Title: Bronze Age Sherd  
with Abbreviated Spiral  
Pattern**

**Date:** n.d.

**Medium:** Buff clay with orange  
/brown paint

---

**Title: Bucchero jug**

**Date:** circa 1150 - 1075 B.C.E.

**Medium:** Light clay with grey  
slip



**Title: Bulbous Flask**

**Date:** 3rd century

**Medium:** Glass

**Title: Bull**

**Date:** n.d.

**Medium:** Lead



1967.115.431

**Title:** Bull or Pig (?)

**Date:** n.d.

**Medium:** Earthenware with cold-painted decoration



1967.115.432

**Title:** Bull or Pig (?)

**Date:** n.d.

**Medium:** Earthenware



1967.115.433

**Title:** Bull or Pig (?)

**Date:** n.d.

**Medium:** Earthenware



1967.115.434

**Title:** Bull or Pig (?)

**Date:** n.d.

**Medium:** Earthenware



1967.115.435

**Title:** Bull or Pig (?)

**Date:** n.d.

**Medium:** Earthenware

**Title:** Bull (?) or Pig (?)

**Date:** n.d.

**Medium:** Earthenware with cold-painted decoration

**Title:** Bust of  
Ptolemaeus III (obverse),  
Eagle Standing on a  
Thunderbolt (reverse)

**Date:** 247 - 222 B.C.E.

**Primary Maker:** Unknown  
Artist

**Medium:** Struck bronze

**Title:** Casserole Lid  
Handle or Platter  
Fragment

**Date:** 1st century

**Medium:** Earthenware with  
slip-painted decoration

**Title:** Coarse Ware Cup

**Date:** 325 - 50 B.C.E.

**Medium:** Pottery

**Title:** Coin a Valentinian II: Bust of Valentinian (obverse), Victory, captive (Reverse)  
**Date:** circa 388  
**Primary Maker:** Unknown  
Artist  
**Medium:** Struck bronze

**Title:** Coin of Flacus Justinianus  
**Constantinus II: Head of Constantine (obverse), Two standing soldiers leaning on a shield (reverse)**  
**Date:** 337 - 361  
**Primary Maker:** Unknown  
Artist  
**Medium:** Struck bronze



**Title:** Coin of Flacus Valerius Constantinus: Helmeted and Laureate Head of Constantine (obverse), Two Standing Victories Holding a Shield on an Altar (reverse)  
**Date:** 308 - 337  
**Primary Maker:** Unknown  
Artist  
**Medium:** Struck bronze

**Title:** Coin of Flacus Valerius Constantinus: Laureate bust of Constantine (obverse), Jupiter standing and holding a Victory on a globe (reverse)  
**Date:** 308 - 337  
**Primary Maker:** Unknown  
Artist  
**Medium:** Struck bronze

**Title:** Coin of Flavius Theodosius: Head of Theodosius (obverse), Wreath (reverse)  
**Date:** August 378 - August 383  
**Primary Maker:** Unknown  
Artist  
**Medium:** Struck bronze

**Title:** Coin of Flavius Throdosius: Head of Theodosius (obverse), Victory (reverse)  
**Date:** 388 - 393  
**Primary Maker:** Unknown  
Artist  
**Medium:** Struck bronze

**Title:** Coin of Marcus Julius Phillipus Arabus: Laureate Bust of Phillipus (obverse), Felicitas Standing Holding a Caduceus and Cornucopia (reverse)  
**Date:** 246  
**Primary Maker:** Unknown  
Artist  
**Medium:** Struck bronze

**Title:** Coin of Valens: Head of Valens (obverse), The Emperor Captive (reverse)  
**Date:** 364 - 367  
**Primary Maker:** Unknown  
Artist  
**Medium:** Struck bronze

**Title:** Coin of Valentinian II: Head of Valentinian (obverse), Victory, wreath (reverse)  
**Date:** circa 388  
**Primary Maker:** Unknown  
Artist  
**Medium:** Struck bronze

**Title: Conical Abrasive  
(?) or Gaming Piece (?)**

**Date:** n.d.

**Medium:** Marble

**Title: Constantinian  
Commemorative Coin:  
Helmeted Bust of Roma  
(obverse), She Wolf  
Nursing the Twins  
Romulus and Remus  
(reverse)**

**Date:** circa 295

**Primary Maker:** Unknown  
Artist

**Medium:** Struck bronze



**Title: Counters or Jewel  
Stones**

**Date:** 1st - 3rd century

**Medium:** Glass

**Title: Cow Idol**

**Date:** n.d.



**Title: Cup**

**Date:** n.d.

**Medium:** Earthenware with  
slip-painted decoration



**Title: Cup**

**Date:** 50 - 150

**Medium:** Unglazed  
earthenware (reddish clay)

**Title: Dekadrachm:  
Syracuse (Sicily) (after  
Greek original)**

**Date:** 20th century

**Medium:** Electrotpe, after  
silver original

**Title: Dekadrachm:  
Syracuse (Sicily) (after  
Greek original)**

**Date:** 20th century

**Medium:** Electrotpe, after  
silver original

**Title: Denarius of  
Augustus**

**Date:** n.d.

**Medium:** Struck silver



**Title: Denarius of Augustus**  
**Date:** n.d.  
**Medium:** Struck silver

**Title: Denarius of Flavius: Head of Roma (obverse), Diana in a Biga (reverse)**  
**Date:** 172 - 151 B.C.E.  
**Primary Maker:** Unknown  
Artist  
**Medium:** Struck silver

**Title: Denarius of Lucius Saturnius: Head of Roma (obverse), Saturn in a quadriga (reverse)**  
**Date:** circa 90 B.C.E.  
**Primary Maker:** Unknown  
Artist  
**Medium:** Struck silver

**Title: Denarius of Lucius Verus: Head of Lucius Verus (obverse), Mars Standing (reverse)**  
**Date:** December 163 - December 164  
**Primary Maker:** Unknown  
Artist  
**Medium:** Struck silver

**Title: Denarius of Marcus Antonius: Galley (obverse), Three Standards (reverse)**  
**Date:** circa 33 - 31 B.C.E.  
**Primary Maker:** Unknown  
Artist  
**Medium:** Struck silver

**Title: Denarius of Marcus Porcius Laeca: Head of Roma (obverse), Libertas Crowned by Victory (Reverse)**  
**Date:** 124 - 103 B.C.E.  
**Primary Maker:** Unknown  
Artist  
**Medium:** Struck silver

**Title: Denarius of Q. Caepio Brutus: Head of Libertas (obverse), Counsel (Lucius Junius Brutus) Walking Between Two Lictors and Preceded by Accensus (reverse)**  
**Date:** circa 50 B.C.E.  
**Primary Maker:** Unknown  
Artist  
**Medium:** Struck silver

**Title: Denarius of Tiberius Caesar: Head of Tiberius Caesar (obverse), Allegorical Female Figure Seated (Livia as Pax or Justice?) (reverse)**  
**Date:** 15 - 14 B.C.E.  
**Primary Maker:** Unknown  
Artist  
**Medium:** Struck silver

**Title: Denarius of Titus Carisius: Head of Juno Moneta (obverse), Implements for Coining Money (reverse)**  
**Date:** circa 45 B.C.E.  
**Primary Maker:** Unknown  
Artist  
**Medium:** Struck silver



**Title: Denarius of Trajan:  
Bust of Trajan Laureate  
(obverse), Trophy of  
Arms (reverse)**  
**Date:** 107 - 111  
**Primary Maker:** Unknown  
Artist  
**Medium:** Struck silver

**Title: Didrachm: Terina  
(South Italy) (after Greek  
original)**  
**Date:** 20th century  
**Medium:** Electrotpe, after  
silver original

**Title: Di-Obol: Head of  
Athena (obverse), Two  
Owls (reverse)**  
**Date:** 393 - 300 B.C.E.  
**Primary Maker:** Unknown  
Artist  
**Medium:** Struck silver

**Title: Disc**  
**Date:** n.d.  
**Medium:** Bronze



**Title: Disc (Omphalos)  
Fibula**  
**Date:** 4th - 5th century  
**Medium:** Bronze

**Title: Disc with Raised  
Center**  
**Date:** n.d.  
**Medium:** Bronze

**Title: Di-Stater: Rhegium  
(South Italy) (after Greek  
original)**  
**Date:** 20th century  
**Medium:** Electrotpe, after  
silver original

**Title: Di-Stater: Thurium  
(South Italy) (after Greek  
original)**  
**Date:** 20th century  
**Medium:** Electrotpe, after  
silver original

**Title: Door Boss or  
Cymbal**  
**Date:** n.d.  
**Medium:** Cast bronze

---

**Title: Double Kohl Tube**

**Date:** n.d.

**Medium:** Glass

**Title: Drachma: Head of**

**Athena (obverse),  
Standing Owl (reverse)**

**Date:** 430 - 400 B.C.E.

**Primary Maker:** Unknown

Artist

**Medium:** Struck silver

**Title: Drachma: Profile**

**Head of the Nymph  
Euboea (obverse), Bull's  
Head and Kantharos  
(reverse)**

**Date:** 378 - 338 B.C.E.

**Primary Maker:** Unknown

Artist

**Medium:** Struck silver

---

**Title: Draped Standing**

**Male (?) Figure**

**Date:** n.d.

**Medium:** Stone

**Title: Earring**

**Date:** n.d.

**Medium:** Bent bronze rod,  
plated with gold

**Title: Eight Sherds of**

**Red-Figure Kylikes:  
Stems and Tondo Rims**

**Date:** n.d.

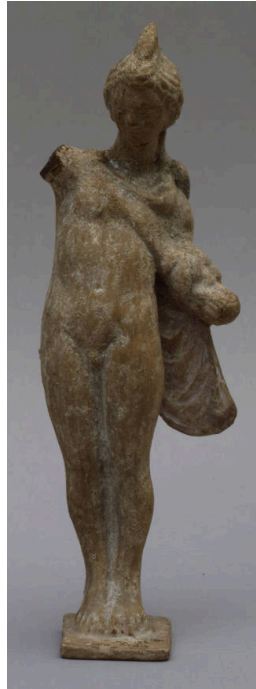
**Medium:** Earthenware with  
slip-painted decoration



**Title: Enthroned Athena**

**Date:** late 6th - early 5th century B.C.E.

**Medium:** Slip-painted earthenware with cold-painted decoration



**Title: Eros or Hermaphrodite with Apples**

**Date:** late 3rd - 2nd century B. C.E.

**Medium:** Earthenware, slip-painted with cold-painted decoration

**Title: Falcon**

**Date:** n.d.

**Medium:** Faience

**Title: Female Head / Maze**

**Date:** n.d.

**Medium:** Coin

**Title: Female Idol**

**Date:** n.d.

**Medium:** Earthenware with slip-painted decoration

**Title: Female Idol**

**Date:** n.d.

**Medium:** Earthenware with slip-painted decoration

**Title: Fifty-One  
Fragments of  
Unidentified Vessels**  
**Date:** n.d.  
**Medium:** Glass

**Title: Figurine Head**  
**Date:** circa 700 - 475 B.C.E.  
**Medium:** Terracotta, reddish  
clay



**Title: Flask**  
**Date:** 1st century  
**Medium:** Clear purple glass



**Title: Flower**  
**Date:** n.d.  
**Medium:** Bronze

**Title: Flying Crested  
Heron (after Greek  
original by Dexamenos  
of Chios)**  
**Date:** n.d.  
**Primary Maker:** Dexamenos  
of Chios  
**Medium:** Plaster, after blue  
chalcedony scaraboid original

**Title: Flying Dove  
(obverse), Wreath  
Encircling a Monogram  
(reverse)**  
**Date:** 243 - 146 B.C.E.  
**Primary Maker:** Unknown  
Artist  
**Medium:** Struck bronze

**Title: Flying Dove  
(obverse), Wreath  
Encircling a Monogram  
(reverse)**  
**Date:** 243 - 146 B.C.E.  
**Primary Maker:** Unknown  
Artist  
**Medium:** Struck bronze

**Title: Flying Pegasus  
(obverse), Trident  
(reverse)**  
**Date:** 400 - 322 B.C.E.  
**Primary Maker:** Unknown  
Artist  
**Medium:** Struck bronze

**Title: Flying Pegasus  
(obverse), Trident  
(reverse)**  
**Date:** 400 - 322 B.C.E.  
**Primary Maker:** Unknown  
Artist  
**Medium:** Struck bronze

---

**Title: Forty-Five Sherds  
of Red-Figure Vessels**

**Date:** n.d.

**Medium:** Earthenware with  
slip-painted decoration and  
black glaze

---

**Title: Forty-Four Sherds  
of Red-Figure Kylikes:  
Figurative Decoration**

**Date:** n.d.

**Medium:** Earthenware with  
slip-painted decoration

---

**Title: Four Fragments  
from Red-Figure Open  
Vase**

**Date:** n.d.

**Primary Maker:** Syleus Painter

**Medium:** Earthenware with  
slip-painted decoration

---

**Title: Four Lamp  
Fragments**

**Date:** n.d.

**Medium:** Slip-painted  
earthenware

---

**Title: Fragment**

**Date:** n.d.

**Medium:** Glass

---

**Title: Fragment**

**Date:** n.d.

**Primary Maker:** Unknown  
Artist

**Medium:** Marble

---

**Title: Fragment from a  
lekanis**

**Date:** 5th century B.C.E.



---

**Title: Fragment of a  
Black-figure Plaque:  
Burial Mourning Scene  
(Prothesis)**

**Date:** 500 - 480 B.C.E.

**Medium:** Earthenware with  
slip-painted decoration

---

**Title: Fragment of a Bowl**

**Date:** n.d.

**Medium:** Earthenware with red  
and black paint

---

**Title: Fragment of a Bowl: Base with Decorative Medallion**  
**Date:** 3rd - 2nd century B.C.E.  
**Medium:** Slip-painted earthenware with molded decoration in relief with leaves radiating from central medallion

**Title: Fragment of a Flat Bottomed Plate**  
**Date:** 1st century  
**Medium:** Slip-glazed earthenware



**Title: Fragment of a Kylix**  
**Date:** 1300 - 1230/1200 B.C.E.  
**Medium:** Earthenware with slip-painted decoration

---

**Title: Fragment of an Earring (?)**  
**Date:** n.d.  
**Medium:** Bronze (?)

**Title: Fragment of an Incense Burner (?)**  
**Date:** circa 50 B.C.E. - 100 C.E.  
**Medium:** Earthenware

**Title: Fragment of a Panathenaic Amphora**  
**Date:** circa late 6th century B.C.E.  
**Medium:** Reddish clay with dark paint

---

**Title: Fragment of a Red-Figure Cup**  
**Date:** early 5th century B.C.E.  
**Medium:** Earthenware with slip-painted decoration

**Title: Fragment of Red Figure Closed Vase**  
**Date:** n.d.  
**Medium:** Earthenware with slip-painted decoration

**Title: Fragment of Red Figure Jar**  
**Date:** second half of 5th century B.C.E.  
**Medium:** Earthenware with slip-painted decoration

---

**Title: Fragment of Red-  
Figure Jar (Stamnos?)**

**Date:** circa 460 B.C.E.

**Primary Maker:** Agrigento

**Medium:** Earthenware with  
slip-painted decoration

---

**Title: Fragment of Red  
Figure Kylix**

**Date:** n.d.

**Medium:** Earthenware with  
slip-painted decoration

---

**Title: Fragment of Red  
Figure Kylix**

**Date:** circa mid- 5th century B.  
C.E.

**Medium:** Earthenware with  
slip-painted decoration

---

**Title: Fragment of Red-  
Figure Kylix**

**Date:** circa 450 B.C.E.

**Medium:** Earthenware with  
slip-painted decoration

---

**Title: Fragment of Red  
Figure Kylix**

**Date:** circa 500 - 475 B.C.E.

**Medium:** Earthenware with  
slip-painted decoration

---

**Title: Fragment of Red-  
Figure Kylix Rim**

**Date:** first half of 5th century B.  
C.E.

**Primary Maker:** Brygos Painter

**Medium:** Earthenware with  
slip-painted decoration

---

**Title: Fragments**

**Date:** 1st - 3rd century

**Medium:** Glass

---

**Title: Fragments of a  
Beaker (?)**

**Date:** n.d.

**Medium:** Glass

---

**Title: Fragments of a  
Beaker**

**Date:** n.d.

**Medium:** Clear glass

**Title: Fragments of a Flask**

**Date:** n.d.

**Medium:** Transparent pale green glass

**Title: Fragments of Red Figure Kylix (Nine Pieces)**

**Date:** n.d.

**Primary Maker:** Painter of Brussels

**Medium:** Earthenware with slip-painted decoration

**Title: Fragment (white)**

**Date:** n.d.

**Primary Maker:** Unknown Artist

**Medium:** Marble



**Title: Frog**

**Date:** n.d.

**Medium:** Bronze



**Title: Funerary Relief**

**Date:** 2nd century

**Medium:** Limestone, tomb stele



**Title: Fusiform Unguentarium**

**Date:** 3rd - 1st century B.C.E.

**Medium:** Earthenware



**Title: Geometric Kantharos/Bowl**

**Date:** late 8th - early 7th century B.C.E.

**Medium:** Earthenware with slip-painted decoration



**Title: Geometric Mosaic**

**Date:** n.d.

**Medium:** Stone tesserae



**Title: Geometric Mosaic**

**Date:** n.d.

**Medium:** Black and white stone tesserae





**Title: Glass Alabastron**

**Date:** n.d.



**Title: Glass Amphorisk**

**Date:** n.d.

**Title: Glass Aryballos**

**Date:** n.d.

**Title: Glass Balsamarium**

**Date:** 4th - 5th century B.C.E.

**Medium:** Glass



**Title: Glass Beaker**

**Date:** n.d.

**Medium:** Clear light green glass

**Title: Glass Beaker**

**Date:** n.d.

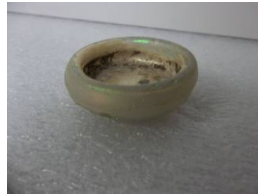
**Medium:** Clear blue glass



**Title: Glass beaker**

**Date:** n.d.

**Medium:** Green glass



**Title: Glass Dish**

**Date:** n.d.

**Title: Glass Flask**

**Date:** n.d.

**Medium:** Glass

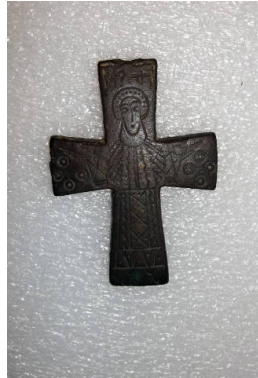
**Title: Glass  
Unguentarium**  
**Date:** n.d.  
**Medium:** Glass

**Title: Gourd Jug**  
**Date:** 1875/1850 - 1750 B.C.E.  
**Medium:** Slip painted  
earthenware, incised  
decoration

**Title: Half Obol: Head of  
Athena (obverse),  
Standing Owl (reverse)**  
**Date:** 479 B.C.E.  
**Primary Maker:** Unknown  
Artist  
**Medium:** Struck silver



**Title: Half of a Pectoral  
Reliquary Cross: Saint  
John the Evangelist**  
**Date:** 9th - 12th century  
**Medium:** Cast bronze with  
incised decoration



**Title: Half of a Pectoral  
Reliquary Cross; The  
Virgin**  
**Date:** 9th - 12th century  
**Medium:** Cast bronze with  
incised decoration

**Title: Harpocrates**  
**Date:** n.d.  
**Medium:** Cast bronze

**Title: Head**  
**Date:** n.d.  
**Medium:** Unglazed  
earthenware

**Title: Head**  
**Date:** n.d.  
**Medium:** Terracotta



**Title: Head**  
**Date:** 1400 - 1200 B.C.E.  
**Medium:** Earthenware with  
slip-painted decoration

**Title: Head and Body of Figurine**

**Date:** n.d.

**Medium:** Terracotta



**Title: Head, Male?**

**Date:** n.d.

**Medium:** Marble



**Title: Head of a Man**

**Date:** circa 500 - 400 B.C.E.

**Medium:** Limestone



**Title: Head of an Emperor**

**Date:** 4th - 5th century C.E.

**Primary Maker:** Unknown

Artist

**Medium:** Carved limestone  
high relief

**Title: Head of Athena (obverse), Standing Owl (reverse)**

**Date:** 370 B.C.E.

**Primary Maker:** Unknown

Artist

**Medium:** Struck bronze

**Title: Head of Athena (obverse), Standing Owl (reverse)**

**Date:** 393 - 322 B.C.E.

**Primary Maker:** Unknown

Artist

**Medium:** Struck bronze



**Title: Head of Athena / Owl**

**Date:** 5th century B.C.E.

**Title: Head of a Warrior (obverse), Ship's Prow (reverse)**

**Date:** 300 - 229 B.C.E.

**Primary Maker:** Unknown

Artist

**Medium:** Struck bronze

**Title: Head of a Woman**

**Date:** n.d.

**Medium:** Earthenware

**Title: Head of a Woman  
(?)**  
**Date:** circa 50 B.C.E. - end of  
1st century C.E.  
**Medium:** Limestone

**Title: Head of a Woman**  
**Date:** circa late 4th - early 3rd  
century B.C.E.  
**Medium:** Limestone



**Title: Head of a Woman**  
**Date:** 1st century  
**Medium:** Earthenware with  
cold-painted decoration

**Title: Head of Pallas  
(obverse), Poseidon  
(reverse)**  
**Date:** 370 - 240 B.C.E.  
**Primary Maker:** Unknown  
Artist  
**Medium:** Struck bronze



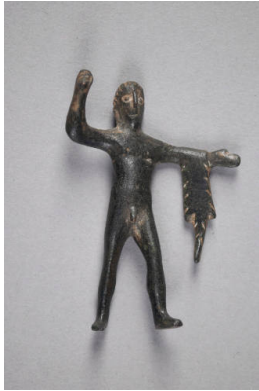
**Title: Head Vase  
(Kantharos)**  
**Date:** circa 450 B.C.E.  
**Medium:** Earthenware with  
slip-painted decoration

**Title: Helmeted God,  
Goddess? / Pegasus**  
**Date:** n.d.  
**Medium:** Coin

**Title: Hemidrachm:  
Boeotian Shield  
(obverse), Kantharos  
and Club (reverse)**  
**Date:** 426 B.C.E.  
**Primary Maker:** Unknown  
Artist  
**Medium:** Struck silver

**Title: Hemidrachm:  
Forepart of Pegasus  
(obverse), Head of  
Aphrodite (reverse)**  
**Date:** 350 - 338 B.C.E.  
**Primary Maker:** Unknown  
Artist  
**Medium:** Struck silver

**Title: Hemisphere**  
**Date:** n.d.  
**Medium:** Marble



**Title: Hercules**  
**Date:** 3rd - 1st century B.C.E.  
**Medium:** Cast bronze



**Title: Holy Rider Amulet**  
**Date:** 4th - 7th century  
**Medium:** Incised bronze



**Title: Holy Rider Amulet**  
**Date:** 4th - 7th century?  
**Medium:** Incised bronze

**Title: Hooked fragment**  
**Date:** n.d.  
**Primary Maker:** Unknown  
 Artist  
**Medium:** Glass



**Title: Horned Head**  
**Date:** 1800 - 1700 B.C.E.?  
**Medium:** Earthenware, slip-painted with incised decoration

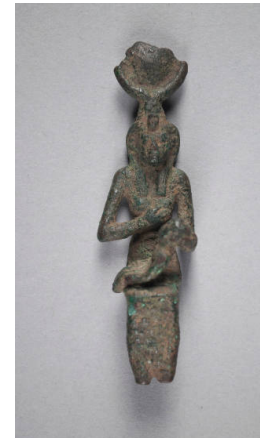


**Title: Horse and Rider**  
**Date:** 700 - 475 B.C.E.  
**Medium:** Earthenware with slip-painted decoration



**Title: Horse and Rider**  
**Date:** circa 550 B.C.E.  
**Medium:** Earthenware with slip-painted decoration

**Title: Horseman / Taras on Dolphin**  
**Date:** 272 - 235 B.C.E.



**Title: Isis Seated and Suckling the Child Horus**  
**Date:** n.d.  
**Medium:** Cast bronze with traces of gilding



**Title: Jug**  
**Date:** n.d.  
**Medium:** Earthenware



**Title: Jug**  
**Date:** circa 50 - 250  
**Medium:** Clay with polished red surface

**Title: Juglet**  
**Date:** n.d.  
**Medium:** Pottery



**Title: Kabiric Pyxis**  
**Fragement: Odysseus's Men Before Circe, Two Combatants**  
**Date:** circa 430 - 420 B.C.E.  
**Primary Maker:** Kabiros Painter  
**Medium:** Earthenware with slip-painted and incised decoration



**Title: Kantharos**  
**Date:** 4th century B.C.E.  
**Medium:** Earthenware with uniform slip-painted decoration

**Title: Knuckle Bone**  
**Date:** n.d.  
**Medium:** Bone

**Title: Kotyle or Krater Fragment**  
**Date:** circa early 8th century B.C.E.  
**Medium:** Pink-buff clay with black stripes

**Title: Krater Fragment: Hercules**  
**Date:** circa 1 - 15  
**Medium:** Slip-glazed earthenware with molded and stamped decoration

**Title: Lamp**  
**Date:** circa second half of 6th century B.C.E.  
**Medium:** Wheel-made and modeled earthenware with slip-painted decoration

---

**Title: Lamp**

**Date:** circa late 6th or late 5th century B.C.E.

**Medium:** Wheel-made and modeled earthenware with slip-painted decoration

---

**Title: Lamp**

**Date:** mid- 1st - 2nd century

**Medium:** Terracotta with remains of brown varnish

---

**Title: Lamp**

**Date:** mid- 1st - 2nd century

**Medium:** Terracotta with remains of brown varnish

---

**Title: Lamp**

**Date:** mid- 3rd - 4th century

**Medium:** Pink-buff terracotta, unglazed

---

**Title: Lamp**

**Date:** late 3rd - 4th century

**Medium:** Pink-buff terracotta with remains of brown varnish

---

**Title: Lamp**

**Date:** late 3rd century B.C.E.

**Medium:** Pink-buff terracotta with brown varnish

---

**Title: Lamp**

**Date:** mid- 1st - 2nd century

**Medium:** Pink-buff terracotta with remains of varnish

---

**Title: Lamp**

**Date:** mid- 1st - 2nd century

**Medium:** Brown-buff terracotta with brown varnish remains

---

**Title: Lamp**

**Date:** late 1st century B.C.E. - mid 1st century C.E.

**Medium:** Brown-buff terracotta and brown varnish

---

**Title: Lamp**

**Date:** mid- 1st - 2nd century

**Medium:** Brown-buff terracotta  
and brown varnish

---

**Title: Lamp**

**Date:** late 1st century B.C.E. -  
mid 1st century C.E.

**Medium:** Brown-buff terracotta  
with brown varnish

---

**Title: Lamp**

**Date:** mid- 1st - 2nd century

**Medium:** Pink-buff terracotta  
with remains of brown varnish

---

**Title: Lamp**

**Date:** late 3rd - 2nd century B.  
C.E.

**Medium:** Brown-buff terracotta  
with remains of red varnish

---

**Title: Lamp**

**Date:** n.d.

**Medium:** Molded earthenware  
with cold-painted (?) decoration

---

**Title: Lamp**

**Date:** circa 5th century B.C.E.

**Medium:** Earthenware with  
slip-painted decoration

---

**Title: Lamp**

**Date:** late 10th century  
(Byzantine) or 13th century

**Medium:** Glazed earthenware

---

**Title: Lamp**

**Date:** 5th - 6th century

**Medium:** Pink-buff terracotta  
with brown slip

---

**Title: Lamp**

**Date:** circa mid- 1st century B.  
C.E.

**Medium:** Wheel made and  
molded slip-painted  
earthenware



---

**Title: Lamp**

**Date:** 5th - 6th century

**Medium:** Terracotta; worn surface with brown slip

---

**Title: Lamp**

**Date:** circa 5th/6th century

**Medium:** Earthenware with incised decoration

---

**Title: Lamp**

**Date:** circa 5th century B.C.E.

**Medium:** Earthenware with slip-painted decoration



**Title: Lamp: Europa and the Bull**

**Date:** circa 1st or 2nd century

**Medium:** Molded earthenware

---

**Title: Lamp Filler (?)**

**Date:** circa 5th century B.C.E.

**Medium:** Earthenware with slip-painted decoration

---

**Title: Lamp Fragment**

**Date:** 4th - 3rd century B.C.E.

**Medium:** Wheel-made earthenware

---

**Title: Lamp Fragment (Bottom and Side Wall)**

**Date:** 1st - 2nd century

**Medium:** Slip-painted earthenware with incised decoration

---

**Title: Lamp Fragment (Reservoir Wall)**

**Date:** circa 500 - 450 B.C.E.

**Medium:** Slip-painted wheel-made earthenware

---

**Title: Lamp Fragment: Rim and Volute Nozzle**

**Date:** n.d.

**Medium:** Slip-painted molded earthenware

---

**Title: Lamp Fragment  
(Section of Upper  
Discus and Handle)**  
**Date:** n.d.  
**Medium:** Slip-painted molded  
earthenware

**Title: Lamp Fragment  
(Section of Upper  
Discus): Two Cupids  
Playing, One Cupid on  
the Lion's Back**  
**Date:** n.d.  
**Medium:** Slip-painted molded  
earthenware

**Title: Lamp Fragment:  
Side Wall**  
**Date:** n.d.  
**Medium:** Slip-painted  
earthenware

---

**Title: Lamp Fragment:  
Side Wall**  
**Date:** n.d.  
**Medium:** Slip-painted  
earthenware

**Title: Lamp Fragment:  
Side Wall and Base**  
**Date:** n.d.  
**Medium:** Earthenware with  
slip-painted decoration

**Title: Lamp Fragments:  
Nine Spouts**  
**Date:** n.d.  
**Medium:** Earthenware

---

**Title: Lamp Fragment  
(Upper Discus): Dead or  
Sleeping Male Nude**  
**Date:** circa 25 - 75  
**Medium:** Slip-glazed  
earthenware with molded  
decoration

**Title: Lamp Holder (?)**  
**Date:** n.d.  
**Medium:** Unidentified metal

**Title: Lamp Mold**  
**Date:** circa second half 6th  
century B.C.E.  
**Medium:** Wheel-made and  
modeled earthenware

**Title: Lamp: Venus and Cupid**  
**Date:** circa 1st or 2nd century  
**Medium:** Molded earthenware

**Title: Lamp with Eros Figure on Discus**  
**Date:** mid- 1st - 2nd century  
**Primary Maker:** Unknown  
Artist  
**Medium:** Brown-buff terracotta with remains of brown varnish

**Title: Lid (?)**  
**Date:** n.d.  
**Medium:** Bronze with traces of wood

**Title: Lid Fragment**  
**Date:** n.d.  
**Medium:** Pottery, painted in red geometric design



**Title: Lid of Pyxis (so-called Lebes Gamikos)**  
**Date:** 420 - 400 B.C.E.  
**Medium:** Earthenware with slip-painted decoration

**Title: Lion's Head / Animal**  
**Date:** n.d.  
**Medium:** Coin

**Title: Loom Weight**  
**Date:** n.d.  
**Medium:** Stone (?)

**Title: Miniature bowls and cups**  
**Date:** most of late 6th or 5th century, B.C.E.



**Title: Mirror Plaque [so-called Tushingham Plaque]**  
**Date:** 5th - 8th century  
**Medium:** Unglazed molded earthenware with cold-paint decoration

**Title: Multicolored Stone Fragment**

**Date:** n.d.

**Medium:** Stone



**Title: Mural Relief: Nike Sacrificing a Bull**

**Date:** 1st - 2nd century

**Medium:** Slip-painted molded and modeled earthenware



**Title: Mural Relief: Youth in Phrygian Hat Feeding a Griffin**

**Date:** early 2nd century

**Medium:** Slip-painted molded earthenware



**Title: Neck-Amphora**

**Date:** circa late 7th century B.C.E.

**Medium:** Earthenware with slip-painted decoration

**Title: Neck of Large Vessel Fragment: Duck, Roses**

**Date:** 7th - 6th century B.C.E.

**Medium:** Corinthian fabric with black figures

**Title: Needle**

**Date:** n.d.

**Medium:** Ivory

**Title: Nude Dancing Satyr Holding a Kantharos (after Greek original)**

**Date:** 20th century

**Medium:** Plaster, after agate scarab original



**Title: Octopus vase**

**Date:** n.d.

**Primary Maker:** Unknown Artist

**Medium:** Plaster



**Title: Oil Feeder (Guttus)**

**Date:** circa 325 - 275 B.C.E.

**Primary Maker:** Unknown Artist

**Medium:** Molded and modeled earthenware with applied, incised, and black slip-painted decoration

---

**Title: Oil Lamp**  
**Date:** 1st century  
**Medium:** Terracotta

**Title: Oil Lamp**  
**Date:** 4th - 5th century  
**Medium:** Terracotta, with  
cross handle



**Title: Oil Lamp**  
**Date:** 5th century  
**Medium:** Terracotta, the cross  
handle

---

**Title: Oil Lamp**  
**Date:** 5th century  
**Medium:** Terracotta

**Title: Oil Lamp**  
**Date:** 4th century  
**Medium:** Terracotta

**Title: Oil Lamp**  
**Date:** 5th - 6th century  
**Medium:** Terracotta

---

**Title: Oil Lamp**  
**Date:** 5th - 6th century  
**Medium:** Terracotta

**Title: Oil Lamp**  
**Date:** 5th - 6th century  
**Medium:** Terracotta



**Title: Oil Lamp**  
**Date:** 5th - 6th century  
**Medium:** Terracotta



**Title: Oil Lamp**  
**Date:** 5th - 6th century  
**Medium:** Terracotta

**Title: Oil Lamp**  
**Date:** 5th - 6th century  
**Medium:** Terracotta

**Title: Oil Lamp**  
**Date:** 5th - 6th century  
**Medium:** Terracotta

**Title: Oil Lamp**  
**Date:** 5th - 6th century  
**Medium:** Terracotta

**Title: Oil Lamp**  
**Date:** 5th - 6th century  
**Medium:** Terracotta



**Title: Oil Lamp**  
**Date:** 4th - 5th century  
**Medium:** Cast bronze

**Title: Oil Lamp**  
**Fragment: Cross**  
**Date:** 4th - 5th century  
**Medium:** Bronze

**Title: Oil Lamp**  
**Fragment: Cross Handle**  
**Date:** 4th - 5th century  
**Medium:** Terracotta

**Title: Oil Lamp**  
**Fragment: Handle**  
**Date:** 5th century  
**Medium:** Terracotta



**Title: Pectoral Reliquary Cross**

**Date:** 9th - 12th century

**Medium:** Cast copper (or high copper-content bronze) with incised decoration



**Title: Pectoral Reliquary Cross: The Crucifixion and The Virgin**

**Date:** 9th - 12th century

**Medium:** Cast bronze or brass

**Title: Pendant Cross**

**Date:** 16th - 17th century?

**Medium:** Bronze or brass (?)

**Title: Pendant Cross**

**Date:** 6th century

**Medium:** Bronze

**Title: Pendant Cross**

**Date:** 12th - 14th century

**Medium:** Bronze



**Title: Pendant: Mary Intercessor at Last Judgment?**

**Date:** 16th - 18th century

**Medium:** Bronze



**Title: Pendant: Trinity (after Rublyov icon)**

**Date:** 16th - 18th century

**Primary Maker:** Unknown Artist

**Medium:** Bronze



**Title: Pendant: Unidentified Miracle of Archangel Michael**

**Date:** 12th century

**Medium:** Cast bronze with traces of enamel

**Title: Perfume Vial**

**Date:** 3rd - 4th century

**Medium:** Blown (greenish) glass

---

**Title: Piece of Acropolis**

**Date:** n.d.

**Primary Maker:** Unknown

**Artist**

**Medium:** White marble



**Title: Pig**

**Date:** n.d.

**Medium:** Mold-made earthenware with green glaze



**Title: Pigeon**

**Date:** 5th century B.C.E.

**Medium:** Slip-painted earthenware

---

**Title: Pin**

**Date:** n.d.

**Medium:** Ivory

**Title: Pin**

**Date:** n.d.

**Medium:** Ivory (2 sections rejoined)



**Title: Piriform Unguentarium**

**Date:** 1st century

**Medium:** Clear glass



**Title: Piriform Unguentarium**

**Date:** circa 300

**Medium:** Clear blue glass



**Title: Plain White VI Jug**

**Date:** circa 475 - 370 B.C.E.

**Medium:** Earthenware (light clay) with white painted decoration

**Title: Plain White VI Jug**

**Date:** circa 475 - 370 B.C.E.

**Medium:** Earthenware (light buff) with white painted decoration





**Title: Plain White VI Jug**  
**Date:** 475 - 370 B.C.E.  
**Medium:** Earthenware (red) with light slip

**Title: Plaque or Sculptor's Model: Ram's Head**  
**Date:** circa 1000 - 300 B.C.E.  
**Medium:** Limestone

**Title: Plate**  
**Date:** n.d.  
**Medium:** Earthenware with slip-painted decoration

**Title: Plate Fragment**  
**Date:** circa late 4th century B.C.E.  
**Primary Maker:** Unknown Artist  
**Medium:** Slip-glazed earthenware with stamped decoration

**Title: Plate Fragment: Base**  
**Date:** n.d.  
**Medium:** Earthenware



**Title: Pyxis (so-called Lebes Gamikos)**  
**Date:** 420 - 400 B.C.E.  
**Medium:** Earthenware with slip-painted decoration



**Title: Ram-Shaped Vessel**  
**Date:** second - third quarter of 5th century B.C.E.  
**Medium:** Earthenware with cold-painted decoration



**Title: Red-Figure Alabastron: Two Running Warriors Carrying Peltas**  
**Date:** circa 510 - 500 B.C.E.  
**Primary Maker:** Painter of Berlin 2268  
**Medium:** Earthenware with slip-painted decoration



**Title: Red-Figure Bell-Krater Fragment: Two Youths (Perhaps Orestes and Pylades at the Altar in Taurus)**  
**Date:** circa 435 - 425 B.C.E.  
**Primary Maker:** Peleus Painter  
**Medium:** Earthenware with slip-painted decoration



**Title: Red-Figure Cup**  
**Date:** circa second quarter of 4th century B.C.E.  
**Medium:** Earthenware with slip-painted decoration

**Title: Red-Figure Fragment from a Large Vase: Part of a Woman**  
**Date:** circa 430 B.C.E.  
**Primary Maker:** Kleophon Painter  
**Medium:** Earthenware with slip-painted decoration

**Title: Red Figure Fragment: Head and Shoulder of a Woman**  
**Date:** circa 450 B.C.E.  
**Primary Maker:** Niobid Painter  
**Medium:** Earthenware with slip-painted decoration

**Title: Red-Figure Fragment of a Jar: A Draped Shoulder (?)**  
**Date:** n.d.  
**Medium:** Earthenware with slip-painted decoration

**Title: Red-Figure Fragment of Attic Cup-Calyx (helmeted soldier holding shield)**  
**Date:** circa mid- 5th century B.C.E.  
**Medium:** Slip-painted earthenware

**Title: Red Figure Hydra Neck Fragment**  
**Date:** n.d.  
**Primary Maker:** Girgenti Painter  
**Medium:** Earthenware with slip-painted decoration

**Title: Red Figure Kalyx Krater Fragment**  
**Date:** 450 - 420 B.C.E.  
**Primary Maker:** Achilles Painter  
**Medium:** Earthenware with slip-painted decoration

**Title: Red Figure Kylix Fragment**  
**Date:** circa mid- 5th century B.C.E.  
**Medium:** Earthenware with slip-painted decoration

**Title: Red-Figure Kylix Fragment**  
**Date:** n.d.  
**Medium:** Earthenware with slip-painted decoration

**Title: Red-Figure Kylix Fragment**

**Date:** 4th century B.C.E.

**Medium:** Earthenware with slip-painted decoration



**Title: Red-Figure Kylix Fragment: A Komos (Party Scene)**

**Date:** circa 515 - 510 B.C.E.

**Medium:** Earthenware with slip-painted decoration

**Title: Red-Figure Kylix Fragment: Draped Seated Male Figure with a Walking Stick (inside), Part of a Figure with a Walking Stick (outside)**

**Date:** second quarter of 5th century B.C.E.

**Medium:** Earthenware with slip-painted decoration

**Title: Red Figure Kylix Fragment from a Lekanis (?): Warrior with a Thracian Helmet**

**Date:** circa 464 - 460 B.C.E.

**Primary Maker:** Niobid Painter

**Medium:** Earthenware with slip-painted decoration



**Title: Red Figure Kylix Fragments**

**Date:** n.d.

**Medium:** Earthenware with slip-painted decoration

**Title: Red-Figure Kylix Fragments**

**Date:** n.d.

**Medium:** Earthenware with slip-painted decoration

**Title: Red-Figure Kylix Fragments**

**Date:** 5th century B.C.E.

**Medium:** Earthenware with slip-painted decoration

**Title: Red-Figure Kylix Fragments: Part of Head and Shoulder of a Youth in Conversation (a), Part of a Draped Figure with Walking Stick (b)**

**Date:** circa second quarter of 5th century B.C.E.

**Primary Maker:** Angular Painter

**Medium:** Earthenware with slip-painted decoration



**Title: Red-Figure Kylix: Seated Woman Juggling Balls with Flying Eros Figure**

**Date:** circa 440 - 420 B.C.E.

**Medium:** Earthenware with slip-painted decoration

**Title: Red Figure Kylix  
Sherd**

**Date:** n.d.

**Primary Maker:** Penthesilea  
Painter

**Medium:** Earthenware with  
slip-painted decoration

**Title: Red-Figure Kylix  
Sherd**

**Date:** n.d.

**Medium:** Earthenware with  
slip-painted decoration



**Title: Red-Figure Kylix:  
Standing Youth Holding  
a Walking Stick and Bowl**

**Date:** n.d.

**Primary Maker:** Antiphon  
Painter

**Medium:** Earthenware with  
slip-painted decoration



**Title: Red-Figure  
Lekanis Lid Fragment:  
Woman Sitting on a Rock**

**Date:** circa 400 - 375 B.C.E.

**Primary Maker:** Jena Painter

**Medium:** Earthenware with  
slip-painted decoration

**Title: Red-Figure  
Lekythos: Flying Nike**

**Date:** circa 450 B.C.E.

**Medium:** Earthenware with  
slip-painted decoration



**Title: Red-Figure  
Lekythos in Six's  
Technique**

**Date:** n.d.

**Medium:** Earthenware with  
slip-painted and cold-painted  
(?) decoration



**Title:** Red-Figure Neck Pelike Fragment: Ephebe (Youth)  
**Date:** circa 510 B.C.E.  
**Primary Maker:** Euphronios  
**Medium:** Earthenware with slip-painted decoration

**Title:** Red-Figure Nolan Amphora  
**Date:** late 5th century B.C.E.  
**Medium:** Earthenware with slip-painted decoration



**Title:** Red-Figure Pelike  
**Date:** n.d.  
**Medium:** Earthenware with slip-painted decoration



**Title:** Red-Figure Pelike  
**Date:** 460 B.C.E.  
**Medium:** Earthenware with slip-painted decoration

**Title:** Red-Figure Pot Sherd  
**Date:** circa 350 B.C.E.  
**Medium:** Earthenware with slip-painted and cold-painted decoration, white paint

**Title:** Red-Figure Pottery Fragment  
**Date:** circa mid- 5th century B. C.E.  
**Primary Maker:** Euaion Painter  
**Medium:** Earthenware with slip-painted decoration

**Title:** Red Figure Skyphos Fragment  
**Date:** n.d.  
**Medium:** Earthenware with slip-painted decoration

**Title:** Red Figure Skyphos Rim Fragment: Head and Shoulder of a Woman  
**Date:** circa 450 B.C.E.  
**Primary Maker:** Douris  
**Medium:** Earthenware with slip-painted decoration



**Title:** Red-Figure Skyphos: Running (?) Youth (Side A), Deer (?) (Side B)  
**Date:** circa 4th century B.C.E.  
**Medium:** Earthenware with slip-painted decoration



**Title:** Red Figure Two Banded Calyx-Krater  
**Fragment:** Battle of Kaineus and Centaur (upper register), Departure of a Youth (lower registrar)  
**Date:** circa 440 - 430 B.C.E.  
**Primary Maker:** Polygnotos  
**Medium:** Earthenware with slip-painted decoration

**Title:** Red-Figure Vase Fragment  
**Date:** mid- 5th century B.C.E.  
**Primary Maker:** Pan Painter  
**Medium:** Earthenware with slip-painted decoration

**Title:** Red-Figure Vase Fragment  
**Date:** n.d.  
**Medium:** Earthenware with slip-painted decoration

**Title:** Red Figure Vessel Fragment  
**Date:** second half of 5th century B.C.E.  
**Medium:** Earthenware with slip-painted decoration

**Title:** Red-Figure Vessel Fragment  
**Date:** n.d.  
**Medium:** Earthenware with slip-painted decoration



**Title:** Red Figure Vessel Fragment (from a kylix?)  
**Date:** circa 430 B.C.E.  
**Medium:** Earthenware with slip-painted decoration



**Title:** Red Polished Bowl  
**Date:** 1950 - 1600 B.C.E.  
**Medium:** Brown clay, red slip

**Title:** Red Polished Coarse Ware Cooking Dipper  
**Date:** circa 1875 - 1750 B.C.E.  
**Medium:** Clay brick red, brownish red slip

**Title:** Red Polished Gourd Jug  
**Date:** circa 1875 - 1750 B.C.E.  
**Medium:** Brown clay, red slip

---

**Title: Red Polished  
Gourd Juglet**

**Date:** 1875 - 1700 B.C.E.

**Medium:** Yellow clay, red slip

---

**Title: Red Polished  
Gourd Juglet**

**Date:** circa 1950 - 1700 B.C.E.

**Medium:** Yellow clay, red slip

---

**Title: Red Polished  
Gourd Juglet**

**Date:** circa 1875 - 1750 B.C.E.

**Medium:** Brown clay, red slip

---

**Title: Red Polished Jug**

**Date:** 1800 - 1750 B.C.E.?

**Medium:** Earthenware, slip-painted with applied, incised and punch-hole decoration

---

**Title: Red Polished  
Juglet**

**Date:** 1800 - 1750 B.C.E.

**Medium:** Earthenware with slip-painted, incised decoration

---

**Title: Red Polished  
Juglet with Side Spout**

**Date:** circa 1800 - 1700 B.C.E.

**Medium:** Pottery



**Title: Relief Fragment:  
Profile Head of a Young  
Woman**

**Date:** n.d.

**Medium:** Marble

---

**Title: Relief Plaque:  
Seated Draped Female  
Figure**

**Date:** n.d.

**Medium:** Stone with cold-painted decoration

---

**Title: Republican-Period  
Denarius: Roma  
(obverse)**

**Date:** n.d.

**Medium:** Struck silver

---

**Title: Rhyton: Griffin Head**

**Date:** n.d.

**Medium:** Earthenware with slip-painted decoration

**Title: Rhyton: Satyr Head**

**Date:** possibly 20th century reproduction cast from ancient mold

**Medium:** Earthenware with slip-painted and cold-painted decoration

**Title: Rim Fragment from Red Figure Kylix**

**Date:** n.d.

**Medium:** Earthenware with slip-painted decoration

---

**Title: Rim Fragment from Red Figure Vessel**

**Date:** n.d.

**Medium:** Earthenware with slip-painted decoration

**Title: Rim of Red Figure Kylix**

**Date:** circa 475 - 450

**Medium:** Earthenware with slip-painted decoration

**Title: Rim of Red Figure Kylix**

**Date:** circa 450 B.C.E.

**Medium:** Earthenware with slip-painted decoration

---

**Title: Ring**

**Date:** 3rd - 4th century

**Medium:** Glass (yellow, tan and amber)

**Title: Ring with "Hooks"**

**Date:** n.d.

**Medium:** Bronze

**Title: Ring (with Incised Cross)**

**Date:** 6th - 8th century?

**Medium:** Bronze





**Title: Sarcophagus  
Fragment with Imperial  
Portrait Medallions (of  
Marcus Aurelius)**  
**Date:** 2nd century  
**Medium:** Lead

**Title: Sauceboat-Shaped  
Vessel**  
**Date:** n.d.  
**Medium:** Earthenware with  
cold-painted (?) decoration

**Title: Seated Eros**  
**Date:** circa 2nd - 1st century B.  
C.E.  
**Medium:** Earthenware

**Title: Seated Male  
(Dionysos or Achilles?)**  
**Date:** 100 - 175  
**Medium:** Ivory or bone  
plaquette

**Title: Sesterce of  
Augustus**  
**Date:** n.d.  
**Medium:** Struck bronze

**Title: Sesterce of  
Augustus**  
**Date:** n.d.  
**Medium:** Struck bronze

**Title: Sesterce of  
Tiberius: The Deified  
Augustus (obverse)**  
**Date:** circa 14  
**Medium:** Struck bronze

**Title: Seventeen Black-  
Figure Vessel Fragments**  
**Date:** n.d.  
**Medium:** Earthenware with  
slip-painted decoration

**Title: Shell**  
**Date:** n.d.  
**Primary Maker:** Unknown  
Artist  
**Medium:** Shell

---

**Title: Shell**  
**Date:** n.d.  
**Primary Maker:** Unknown  
Artist  
**Medium:** Shell

**Title: Shell Lamp**  
**Date:** mid- 7th - mid- 6th  
century B.C.E.  
**Medium:** Terracotta (coarse)  
with brown slip

**Title: Shell Lamp**  
**Fragment: Rim and Nozzle**  
**Date:** circa 650 - 550 B.C.E.  
**Medium:** Wheel-made earthenware, hand-pressed to shape after throwing

---

**Title: Sherd**  
**Date:** n.d.  
**Medium:** Buff clay with dark brown glaze

**Title: Sherd**  
**Date:** n.d.  
**Medium:** Buff clay with brown glaze

**Title: Sherd**  
**Date:** circa 1100 B.C.E.  
**Medium:** Buff clay, brown paint

---

**Title: Sixteen Fragments of Goblets: Bases, Rims and Stems**  
**Date:** n.d.  
**Medium:** Glass

**Title: Small Vessel for Liquids, with Classical Stand**  
**Date:** n.d.  
**Medium:** Terracotta



**Title: Spear Head**  
**Date:** n.d.  
**Medium:** Bronze

---

**Title:** Sphinx (obverse),  
Amphora (reverse)  
**Date:** after 250 B.C.E.  
**Primary Maker:** Unknown  
Artist  
**Medium:** Struck bronze alloy

**Title:** Spindle/Handle  
/Furniture Leg?  
**Date:** 3rd - 5th century?  
**Medium:** Bone, with turned  
and incised decoration

**Title:** Spindle/Handle  
/Furniture Leg?  
**Date:** 3rd - 5th century?  
**Medium:** Bone, with turned  
decoration

---

**Title:** Spindle Whorl  
**Date:** n.d.  
**Medium:** Earthenware

**Title:** Spindle Whorl  
**Date:** circa early 6th century B.  
C.E.  
**Medium:** Earthenware with  
slip-painted decoration

**Title:** Spoon  
**Date:** n.d.  
**Medium:** Bronze

---

**Title:** Square mosaic  
white chips  
**Date:** n.d.  
**Primary Maker:** Unknown  
Artist  
**Medium:** Mosaic

**Title:** Standing Boy  
**Date:** 2nd century B.C.E.  
**Medium:** Earthenware, slip-  
painted (?) with cold-painted  
decoration



**Title:** Standing Draped  
Female Figure  
**Date:** n.d.  
**Medium:** Cast bronze

**Title: Standing Draped  
Male Figure**

**Date:** n.d.

**Medium:** Stone

**Title: Standing Draped  
Man**

**Date:** n.d.

**Medium:** Limestone



**Title: Standing Draped  
Woman**

**Date:** late 3rd - early 2nd  
century B.C.E.

**Medium:** Earthenware

**Title: Standing Draped  
Woman**

**Date:** 400 - 325 B.C.E.

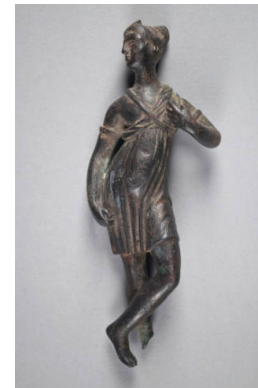
**Medium:** Limestone



**Title: Standing Female  
(Aphrodite?) Holding a  
Pomegranate**

**Date:** 2nd century B.C.E.

**Medium:** Molded and modeled  
earthenware with slip- and cold-  
painted decoration



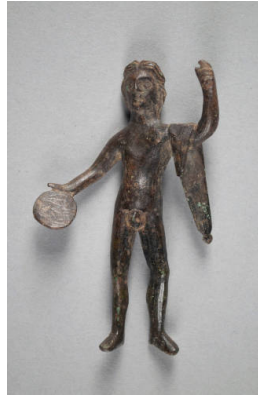
**Title: Standing Female  
(Artemis?)**

**Date:** n.d.

**Medium:** Cast bronze



**Title: Standing Female Holding a Bird and Fan**  
**Date:** 4th - 3rd century B.C.E.  
**Medium:** Earthenware with slip-painted decoration



**Title: Standing Nude Male Holding a Patera**  
**Date:** n.d.  
**Medium:** Cast bronze

**Title: Stater: Elis (after Greek original)**  
**Date:** 20th century (after 420 - 410 B.C.E. original)  
**Medium:** Electrotpe, after silver original

**Title: Stater: Elis (after Greek original)**  
**Date:** 20th century (after circa 360 B.C.E. original)  
**Medium:** Electrotpe, after silver original

**Title: Stater: Stymphalos (after Greek original)**  
**Date:** 20th century (after circa 350 B.C.E. original)  
**Medium:** Electrotpe, after silver original

**Title: Stater: Tarentum (South Italy) (after Greek original)**  
**Date:** 20th century  
**Medium:** Electrotpe, after gold original

**Title: Statue Fragment: Head of a Woman Wearing a Wreath or Fillet**  
**Date:** circa 490 - 380 B.C.E.  
**Medium:** Stone



**Title: Statue Fragment: Human Ear and Hair Fragment**  
**Date:** n.d.  
**Medium:** Bronze

**Title: Statuette Fragment: A Finger**  
**Date:** n.d.  
**Medium:** Marble

---

**Title: Statuette**  
**Fragment: A Left Foot**  
**Date:** n.d.  
**Medium:** Marble

---

**Title: Statuette**  
**Fragment: A Left Hand**  
**Date:** n.d.  
**Medium:** Marble

---

**Title: Statuette**  
**Fragment: A Lower Left Arm**  
**Date:** n.d.  
**Medium:** Marble

---

**Title: Statuette**  
**Fragment: Bull or Dog (?)**  
**Date:** circa mid- 5th century B. C.E.  
**Medium:** Earthenware

---

**Title: Statuette**  
**Fragment: Eros**  
**Date:** circa 4th century B.C.E.  
**Medium:** Earthenware

---

**Title: Statuette**  
**Fragment: Female Head and Shoulders**  
**Date:** early 3rd century B.C.E.  
**Medium:** Earthenware with cold-painted decoration

---

**Title: Statuette**  
**Fragment: Female Head from a Votive Figurine**  
**Date:** 3rd - 2nd century B.C.E.  
**Medium:** Earthenware

---

**Title: Statuette**  
**Fragment: Female Head from a Votive Figurine**  
**Date:** n.d.  
**Medium:** Earthenware

---

**Title: Statuette**  
**Fragment: Hand and Discus of a Phiale Bearer**  
**Date:** n.d.  
**Medium:** Marble

---

**Title: Statuette**  
**Fragment: Head**  
**Date:** circa early 5th century B.  
C.E.  
**Medium:** Earthenware with  
slip-painted decoration

**Title: Statuette**  
**Fragment: Headless**  
**Standing Draped Female**  
**Holding Pitcher in her**  
**Right Hand**  
**Date:** possibly 6th century B.C.  
E.  
**Medium:** Slip-painted molded  
earthenware

**Title: Statuette**  
**Fragment: Head of a Man**  
**Date:** circa 600 B.C.E.  
**Medium:** Unglazed  
earthenware

---

**Title: Statuette**  
**Fragment: Head of a Man**  
**Date:** n.d.  
**Medium:** Limestone



**Title: Statuette**  
**Fragment: Head of a Man**  
**Date:** early 4th century B.C.E.?  
**Medium:** Earthenware with  
cold-painted decoration

**Title: Statuette**  
**Fragment: Head of a Man**  
**Date:** late 3rd century B.C.E.  
**Medium:** Earthenware with  
cold-painted decoration

---

**Title: Statuette**  
**Fragment: Head of a**  
**Man or Woman Wearing**  
**a Conical Headdress**  
**Date:** circa 500 - 400 B.C.E.  
**Medium:** Limestone with cold-  
painted decoration

**Title: Statuette**  
**Fragment: Head of a**  
**Man or Woman Wearing**  
**a Helmet or Headdress**  
**Date:** n.d.  
**Medium:** Stone

**Title: Statuette**  
**Fragment: Head of a**  
**Man Wearing a**  
**Headdress or Wreath**  
**Date:** n.d.  
**Medium:** Stone

---

**Title: Statuette**  
**Fragment: Head of a Man Wearing a Headdress (Wreath?)**  
**Date:** n.d.  
**Medium:** Limestone (?)

---

**Title: Statuette**  
**Fragment: Head of a Man Wearing a Wreath of Leaves**  
**Date:** circa 500 - 400 B.C.E.  
**Medium:** Stone

---

**Title: Statuette**  
**Fragment: Head (of a Woman?)**  
**Date:** n.d.  
**Medium:** Stone

---

**Title: Statuette**  
**Fragment: Head of a Woman**  
**Date:** late 2nd - early 1st century B.C.E.  
**Medium:** Earthenware, slip-painted (?) with cold-painted decoration

---

**Title: Statuette**  
**Fragment: Head of a Woman**  
**Date:** n.d.  
**Medium:** Earthenware with cold- or slip-painted decoration

---

**Title: Statuette**  
**Fragment: Head of a Woman**  
**Date:** n.d.  
**Medium:** Earthenware with cold-painted decoration

---

**Title: Statuette**  
**Fragment: Head of a Woman**  
**Date:** n.d.  
**Medium:** Earthenware with cold-painted decoration

---

**Title: Statuette**  
**Fragment: Head of a Woman**  
**Date:** mid- 5th century B.C.E.?  
**Medium:** Slip-painted earthenware

---

**Title: Statuette**  
**Fragment: Head of a Woman**  
**Date:** n.d.  
**Medium:** Earthenware



**Title: Statuette**

**Fragment: Head of a Woman**

**Date:** early - mid 5th century B. C.E.

**Medium:** Slip-painted earthenware with cold-painted decoration



**Title: Statuette**

**Fragment: Head of a Woman**

**Date:** circa early 5th century B. C.E.

**Medium:** Slip-painted earthenware with cold-painted decoration

**Title: Statuette**

**Fragment: Head of a Woman**

**Date:** circa late 6th century B. C.E.

**Medium:** Slip-painted earthenware with cold-painted decoration

**Title: Statuette**

**Fragment: Head of a Woman**

**Date:** circa 5th century B.C.E.

**Medium:** Slip-painted earthenware with cold-painted decoration

**Title: Statuette**

**Fragment: Head (of a Woman?)**

**Date:** circa 5th century B.C.E.

**Medium:** Earthenware with cold-painted decoration

**Title: Statuette**

**Fragment: Head of a Woman**

**Date:** n.d.

**Medium:** Slip-painted molded earthenware



**Title: Statuette**

**Fragment: Head of a Woman**

**Date:** circa early 5th century B. C.E.

**Medium:** Slip-painted earthenware with cold-painted decoration

**Title: Statuette**

**Fragment: Head of a Woman from a Votive Figurine**

**Date:** n.d.

**Medium:** Earthenware with cold-painted decoration

**Title: Statuette**

**Fragment: Head of a Woman (?) Wearing a Headdress**

**Date:** n.d.

**Medium:** Limestone

**Title:** Statuette  
**Fragment:** Head of a Woman Wearing a Headdress  
**Date:** circa 5th century B.C.E.  
**Medium:** Slip-painted earthenware with cold-painted decoration



**Title:** Statuette  
**Fragment:** Head of a Woman with Elaborate Coiffure  
**Date:** circa second half of 1st century B.C.E.  
**Medium:** Earthenware

**Title:** Statuette  
**Fragment:** Head of a Youth (Kouros) Wearing a Wreath  
**Date:** circa last quarter of 6th century B.C.E.  
**Medium:** Limestone



**Title:** Statuette  
**Fragment:** Head of the Helmeted Promachos Athena  
**Date:** circa 6th century B.C.E.  
**Medium:** Slip-painted earthenware



**Title:** Statuette  
**Fragment:** Helmet Crest  
**Date:** n.d.  
**Medium:** Bronze

**Title:** Statuette  
**Fragment:** Hoof and Lower Leg of a Goat  
**Date:** n.d.  
**Medium:** Marble

**Title:** Statuette  
**Fragment:** Human Foot  
**Date:** before 5th century B.C.E.  
**Medium:** Cast bronze

**Title:** Statuette  
**Fragment:** Human Head  
**Date:** 700 - 475 B.C.E.  
**Medium:** Unglazed earthenware

**Title:** Statuette  
**Fragment:** Human Head  
**Date:** n.d.  
**Medium:** Earthenware

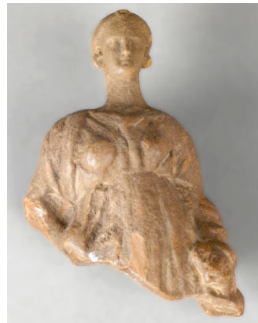
**Title:** Statuette  
**Fragment:** Human Head  
**Date:** n.d.  
**Medium:** Earthenware with cold-painted decoration



**Title:** Statuette  
**Fragment:** Human Leg  
**Date:** n.d.  
**Medium:** Cast bronze

**Title:** Statuette  
**Fragment:** Torso and Head of a Woman  
**Date:** after mid 6th century B.C.E.  
**Medium:** Earthenware

**Title:** Statuette  
**Fragment:** Upper Body and Head of a Woman  
**Date:** circa 5th century B.C.E.  
**Primary Maker:** Unknown Artist  
**Medium:** Earthenware with cold-painted decoration



**Title:** Statuette  
**Fragment:** Upper Half of a Girl in a Hiton  
**Date:** circa third quarter of 5th century B.C.E.  
**Medium:** Molded earthenware (?)

**Title:** Statuette  
**Fragment:** Veiled Head of a Woman  
**Date:** circa mid- 4th century B.C.E.  
**Medium:** Stone (limestone?)

**Title:** Stirring rod fragment  
**Date:** 1st century  
**Medium:** White and blue glass

**Title:** St. Menas Ampulla  
**Date:** 5th - 6th century  
**Medium:** Terracotta



**Title:** St. Menas Ampulla  
**Date:** circa 610 - 640  
**Medium:** Unglazed molded earthenware

---

**Title: Strigil**

**Date:** circa 5th century B.C.E.

**Medium:** Bronze



**Title: Sub-Mycenean Jug**

**Date:** circa 1200 - 1075 B.C.E.

**Medium:** Yellow clay with black and red slip; white paint

**Title: Tack**

**Date:** n.d.

**Medium:** Bronze, plated with gold

---

**Title: Tack**

**Date:** n.d.

**Medium:** Bronze, plated with gold

**Title: Tack Fragment:**

**Shaft**

**Date:** n.d.

**Medium:** Bronze

**Title: Tall Pot**

**Date:** n.d.

**Medium:** Clay

---

**Title: Temple Boy**

**Date:** n.d.

**Medium:** Limestone



**Title: Terra Cotta  
Figurine; Horse and  
Rider**

**Date:** 700 - 475 B.C.E.

**Medium:** Red clay with whitish slip

**Title: Tetradrach: Bactria  
(Bulgaria) (after  
Hellenistic original)**

**Date:** 20th century (after circa 180 B.C.E. original)

**Medium:** Electrotpe, after silver original

---

**Title: Tetradrachm:  
Akragas (Sicily) (after  
Greek original)**

**Date:** 20th century

**Medium:** Electrotpe, after  
silver original

---

**Title: Tetradrachm:  
Athens (Attica) (after  
Greek original)**

**Date:** 20th century (after 490 B.  
C.E.? original)

**Medium:** Electrotpe, after  
silver original

---

**Title: Tetradrachm:  
Katane (Sicily) (after  
Greek original)**

**Date:** 20th century

**Medium:** Electrotpe, after  
silver original

---

**Title: Tetradrachm:  
Macedonia (North  
Greece) (after Greek  
original)**

**Date:** 20th century (after circa  
357 B.C.E. original)

**Medium:** Electrotpe, after  
silver original

---

**Title: Tetradrachm:  
Macedonia (North  
Greece) (after Greek  
original)**

**Date:** 20th century (after 306 -  
283 B.C.E. original)

**Medium:** Electrotpe, after  
silver original

---

**Title: Tetradrachm:  
Naxos (Sicily) (after  
Greek original)**

**Date:** 20th century

**Medium:** Electrotpe, after  
silver original

---

**Title: Tetradrachm:  
Naxos (Sicily) (after  
Greek original)**

**Date:** 20th century

**Medium:** Electrotpe, after  
silver original

---

**Title: Tetradrachm:  
Olynthus (Chalkidike)  
(after Greek original)**

**Date:** 20th century (after 383 -  
379 B.C.E. original)

**Medium:** Electrotpe, after  
silver original

---

**Title: Tetradrachm:  
Syracuse (Sicily) (after  
Greek original)**

**Date:** 20th century

**Medium:** Electrotpe, after  
silver original

**Title: Tetra-Obol: Flying Pegasus (obverse), Head of Aphrodite (reverse)**

**Date:** 350 - 338 B.C.E.

**Primary Maker:** Unknown Artist

**Medium:** Struck silver

**Title: Tetra-Obol: Head of Aphrodite Laureate (obverse), Flying Pegasus (reverse)**

**Date:** 350 - 338 B.C.E.

**Primary Maker:** Unknown Artist

**Medium:** Struck silver

**Title: Thirteen Sherds of Red-Figure Kylikes: Tondo Rims**

**Date:** n.d.

**Medium:** Earthenware with slip-painted decoration

**Title: Thirty-Two Handle Fragments from Red-Figure Kylikes**

**Date:** n.d.

**Medium:** Earthenware with slip-painted decoration

**Title: Three Red Figure Kylix Fragments**

**Date:** n.d.

**Medium:** Earthenware with slip-painted decoration

**Title: Three Red-Figure Kylix Fragments**

**Date:** n.d.

**Medium:** Earthenware with slip-painted decoration, black and white paint



**Title: Top of a Thymiaterion**

**Date:** 4th - 3rd century B.C.E.

**Medium:** Bronze



**Title: Torso of a Female Idol**

**Date:** 1900 - 1750 B.C.E.

**Medium:** Earthenware, slip-painted with applied, incised and punch-hole decoration

**Title: Triobol: Head of Athena (obverse), Standing Owl (reverse)**

**Date:** circa 460 B.C.E.

**Primary Maker:** Unknown Artist

**Medium:** Struck silver



**Title: Tripod Jar with Cover**

**Date:** circa 2500 B.C.E.

**Medium:** Burnished unglazed earthenware (blackware)

**Title: Tripod Stand (?)**

**Date:** n.d.

**Medium:** Slip-painted earthenware with cold-painted decoration

**Title: Twenty-Eight Fragments of a Flask**

**Date:** n.d.

**Medium:** Glass

**Title: Twenty-Three Sherds of Red-Figure Kylikes: Floral Ornaments from Armed Handles**

**Date:** n.d.

**Primary Maker:** Painter of Berlin 2268

**Medium:** Earthenware with slip-painted decoration

**Title: Two Fragments from a Small Vase**

**Date:** circa 2nd century

**Medium:** Partially glazed earthenware

**Title: Two Fragments of Red Figure Calyx-Krater**

**Date:** circa 430 B.C.E.

**Primary Maker:** Polion

**Medium:** Earthenware with slip-painted decoration



**Title: Two-Handled Bowl**

**Date:** 6th century B.C.E.? or later

**Medium:** Earthenware with slip-painted decoration



**Title: Two-Handled Jar**

**Date:** n.d.

**Medium:** Earthenware with slip-painted decoration

**Title: Two Red-Figure Kylix Fragments**

**Date:** n.d.

**Medium:** Earthenware with slip-painted decoration



**Title: Two Tripodic Amphorae Joined**  
**Date:** circa 1900 - 1750 B.C.E.  
**Medium:** Slip painted earthenware with incised decoration



**Title: Unguentarium**  
**Date:** 1st century  
**Medium:** Clear blue glass



**Title: Unguentarium**  
**Date:** circa 300  
**Medium:** Clear blue glass



**Title: Unguentarium**  
**Date:** 1st century  
**Medium:** Glass



**Title: Unguentarium**  
**Date:** 2nd - 3rd century  
**Medium:** Clear yellow glass



**Title: Unguentarium**  
**Date:** 2nd - 3rd century  
**Medium:** Clear blue glass



**Title: Unguentarium**  
**Date:** 1st - 2nd century  
**Medium:** Clear yellow glass



**Title: Unguentarium**  
**Date:** 1st - 2nd century  
**Medium:** Clear yellow glass



**Title: Unguentarium**  
**Date:** late 2nd century  
**Medium:** Clear green glass





**Title: Unguentarium**

**Date:** circa 50 - 150

**Medium:** Clay; reddish-brown surface with purple paint remains

**Title: Unguentarium stopper**

**Date:** n.d.

**Medium:** Dark green glass with rough, bubbly surface

**Title: Unidentified Fragment**

**Date:** n.d.

**Medium:** Bronze

**Title: Unidentified Object**

**Date:** n.d.

**Medium:** Stone

**Title: Unidentified Tubular Shaft Tool**

**Date:** n.d.

**Medium:** Ivory



**Title: Vase**

**Date:** 5th or 6th century B.C.E.

**Medium:** Aryballos with geometric design

**Title: Vase**

**Date:** n.d.

**Title: Vase Fragment**

**Date:** circa 2nd century B.C.E.

**Primary Maker:** Unknown Artist

**Medium:** Partially glazed earthenware (Megarian ware)

**Title: Vase Fragment**

**Date:** n.d.

**Medium:** Pottery

---

**Title: Vase Fragment**

**Date:** mid- 7th century B.C.E.

**Medium:** Dark paint on light clay

**Title: Vase Fragment**

**Date:** n.d.

**Medium:** Cream clay with black glaze design

**Title: Vase Fragment**

**Date:** late 7th century B.C.E.

**Medium:** Clay with reddish brown and black paint



**Title: Vase Fragment:  
Handle with Head of a  
Satyr**

**Date:** n.d.

**Medium:** Bronze

**Title: Vase Sherd**

**Date:** circa 750 B.C.E.

**Medium:** Pinkish-buff clay with black glaze design

**Title: Vessel  
(Alabastron?)**

**Date:** n.d.

**Medium:** Stone

---

**Title: Vessel Fragment**

**Date:** 5th - 6th century

**Medium:** Slip-painted earthenware with roulette decoration

**Title: Vessel Fragment**

**Date:** 2500 - 2000 B.C.E.

**Medium:** Earthenware with slip-painted decoration

**Title: Vessel Fragment**

**Date:** n.d.

**Medium:** Earthenware with slip-painted decoration on exterior

---

**Title: Vessel Fragment:  
Aryballos Bottom (?)**

**Date:** n.d.

**Primary Maker:** Unknown  
Artist

**Medium:** Earthenware with  
slip-painted decoration

**Title: Vessel Fragment:  
Base and Side of a Bowl**

**Date:** n.d.

**Medium:** Slip-painted  
earthenware, micaceous fabric

**Title: Vessel Fragment:  
Base and Stem from a  
Kylix**

**Date:** 1600 - 1100 B.C.E.

**Medium:** Earthenware

---

**Title: Vessel Fragment:  
Body and Base from a  
Conical Oinochoe**

**Date:** n.d.

**Medium:** Earthenware with  
slip-painted decoration

**Title: Vessel Fragment:  
Body and Base of a Cup**

**Date:** n.d.

**Medium:** Earthenware with  
slip-painted decoration

**Title: Vessel Fragment:  
Body and Handle Bases  
from a Kothon**

**Date:** n.d.

**Medium:** Earthenware with  
slip-painted decoration

---

**Title: Vessel Fragment:  
Bottom and Base from  
an Oinochoe**

**Date:** n.d.

**Medium:** Earthenware with  
slip-painted decoration

**Title: Vessel Fragment:  
Bottom from a Conical  
Oinochoe**

**Date:** n.d.

**Medium:** Earthenware with  
slip-painted decoration



**Title: Vessel Fragment:  
Foot of a Cista**

**Date:** n.d.

**Medium:** Bronze



**Title: Vessel Fragment:  
Foot of a Cista**

**Date:** n.d.

**Medium:** Bronze



**Title: Vessel Fragment:  
Handle Fragment**

**Date:** n.d.

**Medium:** Bronze

**Title: Vessel Fragment:  
Mouth and Neck of a  
Trefoil Oinochoe**

**Date:** n.d.

**Medium:** Earthenware with  
slip-painted decoration

**Title: Vessel Fragment:  
Rim**

**Date:** n.d.

**Medium:** Earthenware with red  
and brown slip-painted  
decoration

**Title: Vessel Fragment:  
Rim**

**Date:** 2000 - 1600 B.C.E.

**Medium:** Earthenware with  
slip-painted decoration

**Title: Vessel Fragment:  
Rim from a Kotyle**

**Date:** circa 750 - 700 B.C.E.

**Medium:** Earthenware with  
slip-painted decoration

**Title: Vessel Fragment:  
Rim from a Kotyle**

**Date:** circa 7th century B.C.E.

**Medium:** Earthenware with  
slip-painted decoration

**Title: Vessel Fragment:  
Rim from a Krater**

**Date:** 6th century B.C.E.

**Medium:** Earthenware with  
slip-painted decoration

**Title: Vessel Fragment:  
Rim from a Skyphos**

**Date:** circa first half of 8th  
century B.C.E.

**Medium:** Earthenware with  
slip-painted decoration

---

**Title: Vessel Fragment:  
Rim from a Skyphos**

**Date:** circa first half of 7th century B.C.E.

**Medium:** Earthenware with slip-painted decoration

**Title: Vessel Fragment:  
Rim Sherd from a Plate**

**Date:** n.d.

**Medium:** Earthenware with slip-painted decoration

**Title: Vessel Fragment:  
Rim Sherd from a Plate**

**Date:** n.d.

**Medium:** Earthenware with slip-painted decoration

---

**Title: Vessel Fragments:  
Eighteen Body Sherds  
from Cups**

**Date:** 6th century B.C.E.

**Medium:** Earthenware

**Title: Vessel Fragments:  
Five Knobs from Lids of  
Pyxides**

**Date:** probably 6th century B.C. E.

**Medium:** Earthenware

**Title: Vessel Fragments:  
Five Lid Sherds from  
Pyxides**

**Date:** 6th century B.C.E.

**Medium:** Earthenware with slip-painted decoration

---

**Title: Vessel Fragments:  
Four Body Sherds from  
Oinochoai**

**Date:** n.d.

**Medium:** Earthenware with slip-painted decoration

**Title: Vessel Fragments:  
Four Lips from Alabastra**

**Date:** 6th century B.C.E.

**Medium:** Earthenware with slip-painted decoration

**Title: Vessel Fragment:  
Sherd from a Kotyle**

**Date:** circa 650 - 600 B.C.E.

**Medium:** Earthenware with slip-painted decoration

---

**Title: Vessel Fragment:  
Sherd from the Body  
and Foot on an Ovoid  
Aryballos**  
**Date:** n.d.  
**Medium:** Earthenware with  
slip-painted decoration

**Title: Vessel Fragment:  
Sherd from the Body of  
a Pyxis**  
**Date:** n.d.  
**Medium:** Earthenware with  
slip-painted decoration

**Title: Vessel Fragment:  
Sherd from the Lid of a  
Pyxis**  
**Date:** circa late 8th - first  
quarter 7th century B.C.E.  
**Medium:** Earthenware with  
slip-painted decoration

---

**Title: Vessel Fragment:  
Sherd of Lid from a Pyxis**  
**Date:** n.d.  
**Medium:** Earthenware with  
slip-painted decoration

**Title: Vessel Fragment:  
Sherd of the Body and  
Base of a Conical  
Oinochoe**  
**Date:** circa last quarter of 8th  
century B.C.E.  
**Medium:** Earthenware with  
slip-painted decoration

**Title: Vessel Fragment:  
Sherd of the Body and  
Rim from a Pyxis**  
**Date:** n.d.  
**Medium:** Earthenware with  
slip-painted decoration

---

**Title: Vessel Fragment:  
Sherd of the Body, Rim  
and Handle Base**  
**Date:** n.d.  
**Primary Maker:** Unknown  
Artist  
**Medium:** Earthenware with  
slip-painted decoration

**Title: Vessel Fragment:  
Shoulder and Handle  
from a Miniature  
Aryballos**  
**Date:** n.d.  
**Medium:** Earthenware with  
slip-painted decoration

**Title: Vessel Fragment:  
Side and Bottom from a  
Flat-Bottomed Oinochoe**  
**Date:** n.d.  
**Medium:** Earthenware with  
slip-painted decoration

---

**Title: Vessel Fragments:  
Nine Shoulder, Lid and  
Handle Sherds from  
Oinochoai**  
**Date:** n.d.  
**Medium:** Earthenware with  
slip-painted decoration

**Title: Vessel Fragments:  
Rim and Body Sherd  
and Knob with Part of a  
Lid of a Pyxis**  
**Date:** n.d.  
**Medium:** Earthenware with  
slip-painted decoration

**Title: Vessel Fragments:  
Seventeen Sherds from  
the Bodies of Aryballoi**  
**Date:** 6th century B.C.E.  
**Medium:** Earthenware with  
slip-painted decoration

---

**Title: Vessel Fragments:  
Seven Unidentified  
Sherds**  
**Date:** n.d.  
**Medium:** Earthenware, with  
evidence of burning

**Title: Vessel Fragments:  
Six Rim Sherds from  
Cups**  
**Date:** 6th century B.C.E.  
**Medium:** Earthenware with  
slip-painted decoration

**Title: Vessel Fragment:  
Stem from a Minyan  
Goblet**  
**Date:** 2000 - 1600 B.C.E.  
**Medium:** Burnished  
earthenware with incised  
decoration

---

**Title: Vessel Fragments:  
Two Sherds from the  
Bodies of Quatrefoil  
Aryballoi**  
**Date:** late 6th century B.C.E.  
**Medium:** Earthenware with  
slip-painted decoration

**Title: Vessel Fragment:  
Wall and Rim of a Bowl**  
**Date:** n.d.  
**Medium:** Hammered bronze  
with incised inscription

**Title: Vessel Sherd**  
**Date:** circa 8th century B.C.E.  
**Medium:** Pink clay with yellow-  
cream slip

---

**Title: Vessel Sherd**

**Date:** n.d.

**Medium:** Earthenware with cold-painted (?) or slip-painted (?) decoration

---

**Title: Vessel Sherd: Silen**

**Date:** circa 550 - 530 B.C.E.

**Medium:** Earthenware with slip-painted decoration

---

**Title: Wall Fresco: Style III**

**Date:** circa 1st century

**Medium:** Fresco in wooden frame



**Title: Weight**

**Date:** n.d.

**Medium:** Bronze

---

**Title: White-Ground Alabastron: An Altar Flanked by a Man and a Standing Youth**

**Date:** circa 440 B.C.E.

**Medium:** Earthenware with slip-painted and cold-painted decoration

---

**Title: White-Ground Lekythos Fragment**

**Date:** circa 5th - 1st century B. C.E.

**Medium:** Earthenware with red and yellow slip-painted (?) and cold-painted decoration

---

**Title: White-Ground Lekythos Fragment, Last half of 5th century B.C.E.**

**Date:** late 5th century B.C.E.

**Medium:** Earthenware with slip-painted decoration



---

**Title: White-Ground Lekythos Fragment: Profile Head of a Woman, late 5th century B.C.E.**

**Date:** Last half of 5th century B. C.E.

**Medium:** Earthenware with slip-painted decoration

---

**Title: White-Ground Lekythos: Three Stelae**

**Date:** circa last quarter of 5th century B.C.E.

**Medium:** Earthenware with slip-painted and cold-painted decoration





**Title: White painted animal vase**  
**Date:** circa 1700 - 1600 B.C.E.  
**Medium:** Light clay with brown paint



**Title: White Painted Bowl**  
**Date:** 1750 - 1700 B.C.E.  
**Medium:** Buff clay with brown to red matte paint



**Title: White painted bowl**  
**Date:** 1750 - 1700 B.C.E.  
**Medium:** Buff clay with matte brown paint



**Title: White painted bowl**  
**Date:** 1750 - 1700 B.C.E.  
**Medium:** Light clay with brown paint



**Title: White painted bowl**  
**Date:** 1750 - 1700 B.C.E.  
**Medium:** Pottery; brown paint remains

**Title: White painted bowl**  
**Date:** circa 1750 - 1700 B.C.E.  
**Medium:** Pottery with paint remains

**Title: White painted bowl**  
**Date:** circa 1750 - 1700 B.C.E.  
**Medium:** Light clay with red paint

**Title: White Painted Jug**  
**Date:** 1750 - 1700 B.C.E.  
**Medium:** Buff clay with brown to red matt paint



**Title: White Painted Jug**  
**Date:** 1750 - 1700 B.C.E.  
**Medium:** Light clay with brown to red slightly polished paint

---

**Title: White painted jug**

**Date:** 1750 - 1600 B.C.E.

**Medium:** Buff clay with remains of matt brown paint

---

**Title: White painted jug**

**Date:** circa 1700 - 1600 B.C.E.

**Medium:** Light clay with brown matt paint

---

**Title: White painted jug**

**Date:** circa 1700 - 1600 B.C.E.

**Medium:** Light clay with brown to red paint



**Title: White Painted Jug**

**Date:** 1050 - 950 B.C.E.

**Medium:** Earthenware (buff clay) with reddish-brown and light red accessory painted decoration

---

**Title: White Painted Jug**

**Date:** 1050 - 950 B.C.E.

**Medium:** Earthenware with buff slip with reddish-brown to dark brown painted decoration



**Title: White painted Juglet**

**Date:** 1750 - 1700 B.C.E.

**Medium:** Pottery; red paint with polished surface



**Title: White painted pendent line style bottle**

**Date:** 1750 - 1700 B.C.E.

**Medium:** Clay with reddish-brown paint

---

**Title: White Painted String Hole Jug**

**Date:** 1750 - 1700 B.C.E.

**Medium:** Clay with dark paint

---

**Title: White painted string hole jug**

**Date:** 1700 - 1600 B.C.E.

**Medium:** Buff clay with remains of paint

---

**Title: White Painted  
String Hole Jug**

**Date:** 1750 - 1700 B.C.E.

**Medium:** Light clay with red  
lustrous paint



**Title: White Painted  
String Hole Jug**

**Date:** 1750 - 1600 B.C.E.

**Medium:** Clay with paint

**Title: White Painted  
String Hole Style Jug**

**Date:** circa 1750 - 1700 B.C.E.

**Medium:** Yellow ground with  
red and black pattern

---

**Title: White painted  
tankard**

**Date:** circa 1700 - 1600 B.C.E.

**Medium:** Light clay, brown  
paint on white slip



**Title: White slip bowl**

**Date:** circa 1550 - 1400 B.C.E.

**Medium:** Red clay with whitish  
slip and brown paint



**Title: White slip bowl**

**Date:** circa 1400 - 1275 B.C.E.

**Medium:** Red clay with white  
slip and brown paint



**Title: White Slip Bowl**

**Date:** circa 1400 - 1275 B.C.E.

**Medium:** Red clay with white  
slip and brown paint

**Title: White slip bowl**

**Date:** circa 1400 - 1275

**Medium:** Red clay with white  
slip and brown paint

**Title: White slip bowl**

**Date:** 1400 - 1275 B.C.E.

**Medium:** Red clay with white  
slip and brown paint

---

**Title:** Zeus? / Athena?

**Date:** n.d.

**Medium:** Coin