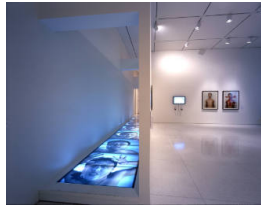


# Basic Report

---



**Title:** 1/30th of a Second Underwater (#1-4)

**Date:** 1999

**Primary Maker:** Wang Wei ()

**Medium:** Chromogenic transparencies on translucent polyester base

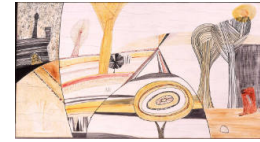


**Title:** Arimatsu Tie-dyed Fabrics, a Famous Product of Narumi ( , Narumi, meibutsu Arimatsu-shibori), no. 41 from the series Fifty-Three Stations of the Tokkaido Road ()

**Date:** circa 1833 - 1834

**Primary Maker:** And Hiroshige (/)

**Medium:** Color woodblock print (oban)



**Title:** Beautiful Isle of Somewhere

**Date:** 1953

**Primary Maker:** H. C. (Horace Clifford) Westermann

**Medium:** Gesso and oil on wood panel



**Title:** Birds of Japan

**Date:** 1994

**Primary Maker:** Sugimoto, Hiroshi

**Medium:** Gelatin silver print



**Title:** Book of Landscapes

**Date:** n.d.

**Primary Maker:** Hasegawa Sadanobu I ()

**Medium:** Woodblock print



**Title:** Border Crossing

**Date:** 1994

**Primary Maker:** Willie Doherty

**Medium:** Digital matte chromogenic print



**Title:** Bowl with Cranes, Willow, and Lotus Plant Decoration

**Date:** 13th century

**Primary Maker:** Unknown Artist

**Medium:** Stoneware with blue-green (celadon) glaze and black-and-white clay inlaid (sanggam) decoration



**Title:** The Bridal Veil, 900 feet

**Date:** 1866

**Primary Maker:** Carleton E. Watkins

**Medium:** Albumen print



**Title:** Brig on the Water

**Date:** 1856

**Primary Maker:** Gustave Le Gray

**Medium:** Albumen print from a wet collodion negative



**Title:** Canyon and Headlands of Colorado and Paria Rivers (beneath the Vermilion Cliffs)  
**Date:** 1872  
**Primary Maker:** William H. Bell  
**Medium:** Albumen print



**Title:** Cherry, South Haven  
**Date:** May 1909  
**Primary Maker:** Bertha Evelyn Jaques  
**Medium:** Cyanotype negative on brown paper mount



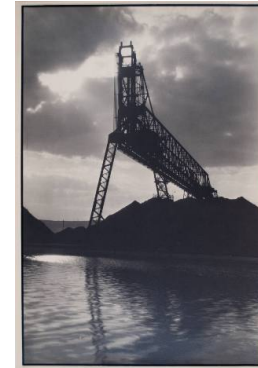
**Title:** City Wall and Five-Story Pagoda, Canton  
**Date:** circa 1890s  
**Primary Maker:** Unknown Artist  
**Medium:** Albumen print



**Title:** The Cliff  
**Date:** n.d.  
**Primary Maker:** Maxime Maufra  
**Medium:** Watercolor with preliminary pencil on wove paper



**Title:** Cloud Study  
**Date:** circa 1817  
**Primary Maker:** Pierre Henri de Valenciennes  
**Medium:** Oil on paper, mounted on paperboard



**Title:** Coal Rig, Ore Docks, Duluth, Minnesota  
**Date:** circa 1929  
**Primary Maker:** Margaret Bourke-White  
**Medium:** Gelatin silver print



**Title:** Cows at the Watering Place (Vaches a l'abreuvoir)  
**Date:** 1862  
**Primary Maker:** Charles-François Daubigny  
**Medium:** Salted paper print (cliché-verre)



**Title:** East Chicago, Indiana  
**Date:** 1986  
**Primary Maker:** Bob Thall  
**Medium:** Gelatin silver print



**Title:** An Estuary of the Seine  
**Date:** 1883  
**Primary Maker:** Gustave Caillebotte  
**Medium:** Oil on canvas



**Title:** Fall Landscape, Study (Yellow Trees) (Herbstlandschaft, Studie [Gelbe Bäume])  
**Date:** 1911  
**Primary Maker:** Gabriele Münter  
**Medium:** Oil on paperboard



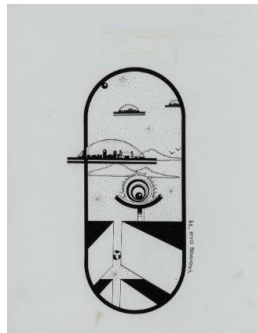
**Title:** Ferns, Valley Floor, Yosemite National Park, California  
**Date:** circa 1932 - 1976 (negative, printed 1976)  
**Primary Maker:** Ansel Adams  
**Medium:** Gelatin silver print, mounted



**Title:** Fifty-three Stations of the Tokaido (Tokaido Gojusan-tsugi no uchi): Clear Weather after Snow (Kameyama, yukibare)  
**Date:** 1833 - 1834  
**Primary Maker:** And Hiroshige (/)  
**Medium:** Color woodblock (oban) on thin wove paper mounted on heavy wove paper



**Title:** Fifty-three Stations of the Tokaido (Tokaido Gojusan-tsugi no uchi): Dusk Scene (Numazu, tasogare-zu)  
**Date:** 1833/1834  
**Primary Maker:** And Hiroshige (/)  
**Medium:** Color woodblock (oban) on thin wove paper mounted on heavy wove paper



**Title:** Fleet of Cities  
**Date:** circa 1977 - 79  
**Primary Maker:** Yaoundé Olu  
**Medium:** Pen and ink on illustration board



**Title:** Fulham  
**Date:** 1834 - 1903  
**Primary Maker:** James Abbott McNeill Whistler  
**Medium:** Etching on laid paper



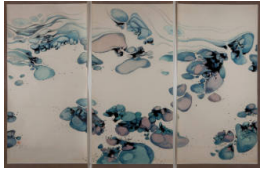
**Title:** The Graces Unveiling Nature  
**Date:** circa 1780  
**Primary Maker:** Benjamin West  
**Medium:** Oil on canvas



**Title:** Grand Coulee Dam, Douglas County, WA  
**Date:** 1996  
**Primary Maker:** Shibata, Toshio  
**Medium:** Gelatin silver print



**Title:** Green Lizard (Grüne Eidechse)  
**Date:** 1896  
**Primary Maker:** Josef Maria Eder  
**Medium:** Photogravure print from an x-ray negative



**Title:** Green Matter  
**Date:** 1971  
**Primary Maker:** Xian Hong  
**Medium:** Hanging scroll triptych, ink and color on paper



**Title:** Hadrian's Villa:  
The Apse of the Hall of  
the Philosophers  
(Avanzi di una Sala  
appartenente al Castro  
Pretorio nella villa  
Adriana in Tivoli)  
**Date:** 1774  
**Primary Maker:** Giovanni  
Battista Piranesi  
**Medium:** Etching on laid paper



**Title:** Hampstead Heath,  
Stormy Noon, Sand  
Diggers  
**Date:** 1831  
**Primary Maker:** David Lucas  
**Medium:** Mezzotint on chine  
appliqué



**Title:** Hara, from the  
series Fifty-three  
Stations of the Tōkaid  
Road (Tōkaidō gojūsan  
tsugi), also known as  
the Kyōka Tōkaid  
**Date:** 1840 - 1842  
**Primary Maker:** And Hiroshige  
(/)  
**Medium:** Woodblock print



**Title:** Harbor in Light  
**Date:** 1929  
**Primary Maker:** Arthur  
Garfield Dove  
**Medium:** Oil on canvas in  
original copper frame



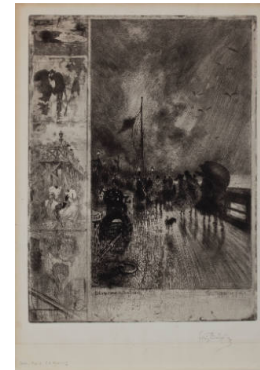
**Title:** A Heath (after  
painting by John  
Constable)  
**Date:** 1833 - 1855  
**Primary Maker:** David Lucas  
**Medium:** Mezzotint on wove  
paper



**Title:** Joseon painting:  
Travelers among  
Streams and Mountains ,  
**Date:** 16th century  
**Primary Maker:** Unknown  
Artist  
**Medium:** Hanging scroll, brush  
and ink on silk



**Title:** Kakegawa, from  
the series Fifty-three  
Stations of the Tōkaidō  
Road (Tōkaidō gojūsan  
tsugi), also known as  
the Kyōka Tōkaidō  
**Date:** 1840 - 1842  
**Primary Maker:** And Hiroshige  
(/)  
**Medium:** Woodblock print



**Title:** A Landing in  
England (Un  
Débarquement en  
Angleterre)  
**Date:** 1879  
**Primary Maker:** Félix Hilaire  
Buhot  
**Medium:** Etching, drypoint,  
aquatint, and stipple engraving



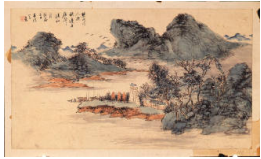
**Title:** Landscape  
**Date:** circa 1880 - 1885  
**Primary Maker:** George Inness, Sr.  
**Medium:** Oil on canvas



**Title:** Landscape  
**Date:** n.d.  
**Primary Maker:** Kan Tan'y  
**Medium:** Hanging scroll, ink on silk



**Title:** Landscape  
**Date:** Probably after 1910  
**Primary Maker:** Yun Yong-gu (Yun Yeong-Gu)  
**Medium:** Hanging scroll, brush and ink on silk



**Title:** Landscape and Poem: Modified Excerpt from "Thinking of My Brothers on a Moonlit Night" by Du Fu (712–770)  
**Date:** late 19th or early 20th century  
**Primary Maker:** An Jae-geon (An Chaegon)  
**Medium:** Leaf from a dispersed album, brush and ink and light color on paper



**Title:** Landscape Figure  
**Date:** 1959  
**Primary Maker:** Barbara Hepworth  
**Medium:** Carved alabaster



**Title:** Landscape for Madrigal Concert I  
**Date:** 1972  
**Primary Maker:** Albín Brunovský  
**Medium:** Etching



**Title:** Landscape for Madrigal Concert II  
**Date:** 1972  
**Primary Maker:** Albín Brunovský  
**Medium:** Etching



**Title:** Landscape with Apollo and Daphne  
**Date:** n.d.  
**Primary Maker:** Anthonie Waterloo  
**Medium:** Etching



**Title:** Landscape with Farmhouse (after Abraham Bloemaert)  
**Date:** 1613/1614  
**Primary Maker:** Boetius Adams Bolswert  
**Medium:** Etching



**Title:** Landscape with Men on Horseback, Tents and Courtiers  
**Date:** first half of 20th century  
**Medium:** Ink and opaque color on paper



**Title:** Leaves Under the Eiffel Tower  
**Date:** 1952  
**Primary Maker:** Ilse Bing  
**Medium:** Gelatin silver print on original mount



**Title:** Lingerie  
**Date:** 1950s  
**Primary Maker:** Roy DeCarava  
**Medium:** Gelatin silver print



**Title:** Louisville Flood Victims Paddling  
**Date:** February 7, 1938  
**Primary Maker:** Margaret Bourke-White  
**Medium:** Gelatin silver print



**Title:** Low Landscape  
**Date:** 1946  
**Primary Maker:** David Smith  
**Medium:** Cast and welded steel and bronze



**Title:** Médinet Habou  
**Date:** 1850  
**Primary Maker:** Maxime Du Camp  
**Medium:** Salt paper print, from paper negative on original mount



**Title:** Mishima: First Gate of the Shrine of Mishima Daimyjin (Mishima, Mishima Daimyjin Ichi no torii) (No. 12 from the series Famous Sights of the Fifty-three Stations - Gojsan tsugi meisho zue- also known as the Vertical Tkaid)  
**Date:** 1855  
**Primary Maker:** And Hiroshige (/)  
**Medium:** Woodblock print



**Title:** Mishima: Morning Mist (Mishima, asagiri)  
**Date:** 1833/1834  
**Primary Maker:** And Hiroshige (/)  
**Medium:** Color woodcut on thin wove paper



**Title:** Mishima Pass in Kai Province (Ksh Mishima-goe)  
**Date:** early 1830s  
**Primary Maker:** Katsushika Hokusai  
**Medium:** Color woodblock on wove paper mounted on heavy paper



**Title:** Moss Brae Falls, Near Mt. Shasta  
**Date:** n.d. (negative, printed 1979)  
**Primary Maker:** William Henry Jackson  
**Medium:** Albumen print



**Title:** Mt. Fuji Near Yokohama Japan  
**Date:** 4 March 1968  
**Primary Maker:** Joseph E. Yoakum  
**Medium:** Colored pencil, ball-point pen, and ink on wove paper



**Title:** Mt. Yukon in Brooks Alaska Mtn. Range 87 miles north of Fairbanks  
**Date:** 18 June 1967  
**Primary Maker:** Joseph E. Yoakum  
**Medium:** Colored pencil, ball-point pen, and ink on wove paper



**Title:** Naikoku kangy hakurankai no zu (National Industrial Exhibition)  
**Date:** 1877, 8th or 9th month  
**Primary Maker:** Kobayashi Kiyochika ( )  
**Medium:** Color woodblock print



**Title:** Near Dieppe (Environs de Dieppe)  
**Date:** 1833  
**Primary Maker:** Eugène Isabey  
**Medium:** Lithograph on chine appliqué



**Title:** New York  
**Date:** circa 1940  
**Primary Maker:** Helen Levitt  
**Medium:** Gelatin silver print



**Title:** No. 8, Hiratsuka: Ferry on Banyû River and Distant View of Mount Ôyama (Hiratsuka, Banyûgawa funewatashi Ôyama enbô), from the series Famous Sightings of the Fifty-three Stations (Gojûsan tsugi meisho zue), also known as the Vertical Tôkaidô  
**Date:** 1855  
**Primary Maker:** And Hiroshige ( / )  
**Medium:** Woodblock print



**Title:** No. 17 - Yui: Satta Pass and Kurasawa Station (Satta tôte, Kurasawa tateba), from the series The Tôkaidô Road - The Fifty-three Stations (Tôkaidô - Gojûsan tsugi no uchi)  
**Date:** circa 1852  
**Primary Maker:** And Hiroshige ( / )  
**Medium:** Woodblock print



**Title:** No. 19 - Ejiri: Koyoshida Bridge (Koyoshida no hashi), from the series The Tôkaidô Road - The Fifty-three Stations (Tôkaidô - Gojûsan tsugi no uchi)  
**Date:** circa 1852  
**Primary Maker:** And Hiroshige ( / )  
**Medium:** Woodblock print



**Title:** No. 28, Fukuroi: Famous Tôtômi Kites (Fukuroi, meibutsu Enshû tako), from the series Famous Sights of the Fifty-three Stations (Gojûsan tsugi meisho zue), also known as the Vertical Tôkaidô

**Date:** 1855

**Primary Maker:** And Hiroshige (/)

**Medium:** Woodblock print



**Title:** No. 36, Goyu: Moto-no-ga-hara and Motozaka Pass (Goyû, Moto-no-ga-hara Motozaka goe), from the series Famous Sights of the Fifty-three Stations (Gojûsan tsugi meisho zue), also known as the Vertical Tôkaidô

**Date:** 1855

**Primary Maker:** And Hiroshige (/)

**Medium:** Woodblock print



**Title:** No. 38 - Okazaki: Yahagi Bridge (Yahagi no hashi), from the series The Tkaid Road - The Fifty-three Stations (Tkaid - Gojsan tsugi no uchi)

**Date:** 1850 - 1851

**Primary Maker:** And Hiroshige (/)

**Medium:** Woodblock print



**Title:** No. 43 - Yokkaichi: Junction with the Side Road to the Shrine (Sangd oiwake), from the series The Tkaid Road - The Fifty-three Stations (Tkaid - Gojsan tsugi no uchi)

**Date:** 1850 - 1851

**Primary Maker:** And Hiroshige (/)

**Medium:** Woodblock print



**Title:** Now (Berlin Wall)

**Date:** 1996

**Primary Maker:** Alan Cohen

**Medium:** Gelatin silver print



**Title:** Numazu, from the series Fifty-three Stations of the Tkaid Road (Tkaid gojsan tsugi), also known as the Kyka Tkaid

**Date:** 1840 - 1842

**Primary Maker:** And Hiroshige (/)

**Medium:** Woodblock print



**Title:** Odawara: The Sakawa River (Odawara, Sakawagawa), third (?) state, from the series Fifty-three Stations of the Tōkaidō Road (Tōkaidō gojūsan tsugi no uchi), also known as the First Tōkaidō or Great Tōkaidō

**Date:** 1833 - 1834

**Primary Maker:** And Hiroshige (/)

**Medium:** Woodblock print



**Title:** Ohsuk (Dark Black Stone)

**Date:** 1986

**Primary Maker:** Han Yongjin

**Medium:** Carved stone



**Title:** Okazaki: Yahagi Bridge (Okazaki, Yahagi no hashi), from the series Fifty-three Stations of the Tōkaidō Road (Tōkaidō gojūsan tsugi), also known as the Kyōka Tōkaidō

**Date:** 1840 - 1842

**Primary Maker:** And Hiroshige (/)

**Medium:** Woodblock print



**Title:** On the Lake Front Promenade, Columbian World Exposition

**Date:** 1893

**Primary Maker:** Childe Hassam

**Medium:** Oil on canvas

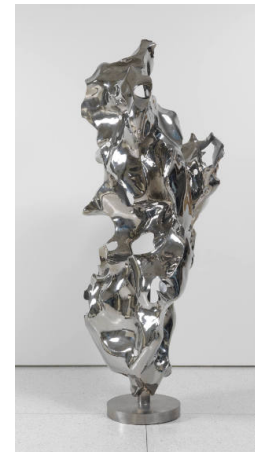


**Title:** Orchids

**Date:** 1824

**Primary Maker:** Yun, Xiang [Yün, Hsiang]

**Medium:** Hand scroll: four painting panels and colophon panel, ink on silk



**Title:** Ornamental Rock

**Date:** 1996

**Primary Maker:** Zhan Wang ()

**Medium:** Stainless steel



**Title:** Ôtsu, from the series Fifty-three Stations of the Tōkaidō Road (Tōkaidō gojūsan tsugi), also known as the Kyōka Tōkaidō

**Date:** 1840 - 1842

**Primary Maker:** And Hiroshige (/)

**Medium:** Woodblock print



**Title:** The Park (Le parc)

**Date:** 1897

**Primary Maker:** Gaston de Latenay

**Medium:** Color lithograph



**Title:** photograph

**Date:** 1968, printed 1975

**Primary Maker:** Bernd Becher

**Medium:** Gelatin silver print



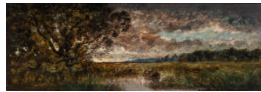
**Title:** Preparation drawing for The Connecticut Ballroom: Deserted Airport N.M.  
**Date:** n.d.  
**Primary Maker:** H. C. (Horace Clifford) Westermann  
**Medium:** Pen and ink and watercolor on Green Retree thick wove paper with deckled edges



**Title:** Pribranskyeh [?]  
**Date:** circa 1910's  
**Primary Maker:** František Drtikol  
**Medium:** Salt print ?



**Title:** Return to Port (Retour au Port)  
**Date:** 1833  
**Primary Maker:** Eugène Isabey  
**Medium:** Lithograph



**Title:** River Landscape  
**Date:** n.d.  
**Primary Maker:** Charles-François Daubigny  
**Medium:** Oil on wood panel



**Title:** Rock of Ages #7, Active Section, E.L. Smith Quarry, Barre, Vermont, USA, 1991  
**Date:** 1991  
**Primary Maker:** Edward Burtynsky  
**Medium:** Chromogenic print, from a 4x5 color negative transferred to a digital file, on Kodak Professional Paper with a Foamcore mount



**Title:** Rotational Grazing, Chase County, Kansas  
**Date:** November 8, 1996  
**Primary Maker:** Terry Evans  
**Medium:** Chromogenic print



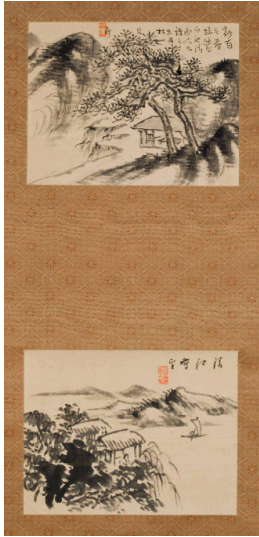
**Title:** Round African Shores 1  
**Date:** 1981  
**Primary Maker:** Gerald Williams  
**Medium:** Cut paper and acrylic paint on paper board



**Title:** Round African Shores 2  
**Date:** 1981  
**Primary Maker:** Gerald Williams  
**Medium:** Cut paper and acrylic paint on paper board



**Title:** Scenes from the Eight Views of the Xiao and Xiang Rivers  
**Date:** n.d.  
**Primary Maker:** Tosa Mitsunari  
**Medium:** Brush and ink on gilt sumi paper



**Title:** Scholar's Hut in the Mountains (above), Imaginary View of Qingjiang Prefecture in Sichuan Province, China (below)

**Date:** circa 1870

**Primary Maker:** Tanomura Chokunyu

**Medium:** Pair of album leaves, mounted as a hanging scroll, brush and ink on silk



**Title:** Scroll, A4 ()

**Date:** 1999 - 2000

**Primary Maker:** Xing Danwen ( )

**Medium:** Gelatin silver print



**Title:** The Sea off Satta in Suruga Province (Suruga Satta kaijō), from the series Thirty-six Views of Mount Fuji (Fuji sanjūrokkei)

**Date:** 1858

**Primary Maker:** And Hiroshige (/)

**Medium:** Woodblock print



**Title:** The Sea off Satta in Suruga Province (Suruga Satta kaij) (from the series Thirty-six Views of Mount Fuji - Fuji sanjrokkei)

**Date:** 1858

**Primary Maker:** And Hiroshige (/)

**Medium:** Woodblock print



**Title:** See America First: Untitled #2 (See America First III)

**Date:** 5 - 21 September 1968

**Primary Maker:** H. C. (Horace Clifford) Westermann

**Medium:** Four-color lithograph (yellow, red, blue, black).



**Title:** Shibaura, Tokyo

**Date:** 1963

**Primary Maker:** Masahisa Fukase

**Medium:** Gelatin silver print



**Title:** Shirasuka: View of Shiomizaka (Shirasuka, Shiomizaka zu), from the series Fifty-three Stations of the Tōkaidō Road (Tōkaidō gojūsan tsugi no uchi), also known as the First Tōkaidō or Great Tōkaidō  
**Date:** 1833 - 1834  
**Primary Maker:** And Hiroshige (/)  
**Medium:** Woodblock print



**Title:** Shno: Driving Rain  
**Date:** circa 1833 - 1834  
**Primary Maker:** And Hiroshige (/)  
**Medium:** Color woodblock (oban) on thin wove paper



**Title:** Shrimp and Sagittaria  
**Date:** 1941  
**Primary Maker:** Qi Baishi  
**Medium:** Ink on paper



**Title:** Six Etchings after Drawings by Goethe edited by C.A. Schwerdgeburth (Radirte Blätter nach Handzeichnungen von Goethe herausgeben von C.A. Schwerdgeburth): Plate IV.  
**Date:** 1821  
**Primary Maker:** Johann Wolfgang von Goethe  
**Medium:** Etching



**Title:** Six Etchings after Drawings by Goethe edited by C.A. Schwerdgeburth (Radirte Blätter nach Handzeichnungen von Goethe herausgeben von C.A. Schwerdgeburth): Plate VI.  
**Date:** 1821  
**Primary Maker:** Johann Wolfgang von Goethe  
**Medium:** Etching



**Title:** Snake River Cañon, Idaho, View from above Shoshone Falls  
**Date:** 1874  
**Primary Maker:** Timothy H. O'Sullivan  
**Medium:** Photograph



**Title:** The So-called Villa of Maecenas, Tivoli (Avanzi della Villa de Mecenate a Tivoli)

**Date:** 1763

**Primary Maker:** Giovanni Battista Piranesi

**Medium:** Etching



**Title:** Sound Raga (Spring)

**Date:** 1977

**Primary Maker:** Evelyn Statsinger

**Medium:** Oil on linen



**Title:** The Stone Garden

**Date:** 1959

**Primary Maker:** Kawanishi Hide

**Medium:** Color woodblock with blind stamping



**Title:** Taking Shelter from a Sudden Summer Shower under a Huge Tree

**Date:** early 1790s

**Primary Maker:** Kitagawa Utamaro

**Medium:** Triptych of color woodblocks (oban)



**Title:** Tall Vase

**Date:** 1908

**Primary Maker:** Kitaro Shirayamadani

**Medium:** Earthenware with slip-painted decoration under a matte vellum glaze



**Title:** The Three Gorges Dam Migration

**Date:** 2010

**Primary Maker:** Yun-Fei Ji

**Medium:** Hand-printed watercolor woodblock mounted on paper and silk

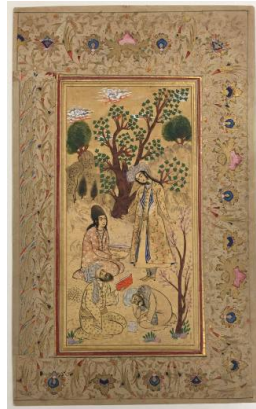


**Title:** Tsuchiyama:  
**Spring Rain**  
(Tsuchiyama, haru no ame), from the series  
**Fifty-three Stations of the Tōkaidō Road**  
(Tōkaidō gojūsan tsugi no uchi), also known as  
**the First Tōkaidō or Great Tōkaidō**

**Date:** 1833 - 1834

**Primary Maker:** And Hiroshige  
(/)

**Medium:** Woodblock print



**Title:** Two Women and  
**Two Men Reading in the Countryside**

**Date:** second half of 17th century

**Primary Maker:** Unknown  
Maker

**Medium:** Album page, ink,  
light color and gold on wove  
paper



**Title:** Untitled

**Date:** 1961

**Primary Maker:** Joan Mitchell

**Medium:** Oil on canvas

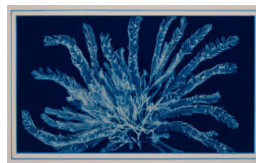


**Title:** Untitled (Grain  
**Field)**

**Date:** n.d.

**Primary Maker:** Judy Dater

**Medium:** Gelatin silver print,  
mounted on laid and wove  
paper

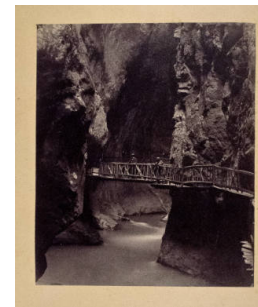


**Title:** Untitled  
**[Photogram of Plant Specimen]**

**Date:** circa 1900

**Primary Maker:** Bertha Evelyn  
Jaques

**Medium:** Cyanotype



**Title:** Untitled (Two Men  
**on a Mountain Bridge)**

**Date:** circa 1860s

**Primary Maker:** Adolphe Braun

**Medium:** Carbon print with  
original mount



**Title:** Untitled [visionary  
**garden design]**

**Date:** 1960 - 1968

**Primary Maker:** Minnie Evans

**Medium:** Oil and paper collage  
on canvas board



**Title:** Valley View,  
**Yosemite National Park,**  
**California**

**Date:** circa 1932 - 1976

(negative, printed 1976)

**Primary Maker:** Ansel Adams

**Medium:** Gelatin silver print,  
mounted

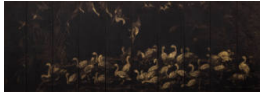


**Title:** View of Florence  
**from Montughi (after**  
**Giuseppe Zocchi)**

**Date:** 1744

**Primary Maker:** Johann  
Andreas Pfeffel the Younger

**Medium:** Engraving on laid  
paper



**Title: Wild Geese and Reeds**

**Date:** n.d., probably early to mid- 20th century

**Primary Maker:** Gim Yun-Bo ( )

**Medium:** Continuous ten-panel folding screen, of brushed gold pigment on black silk



**Title: Winter Landscape**

**Date:** n.d.

**Primary Maker:** Heo Ryeon ( )

**Medium:** Hanging scroll, brush and ink and light color on paper



**Title: Wooded Landscape with Crenellated Wall (View of Laurenziberg in Prague?)**

**Date:** circa 1600 - 1607

**Primary Maker:** Giovanni Castrucci

**Medium:** Commessi di pietre dure (so-called Florentine Mosaic) of Bohemian semi-precious hard stones and petrified wood mounted on slate (in later frame)