

Basic Report



Title: 3 porcelain figures
Date: n.d.
Primary Maker: Prima Vera Factory
Medium: Porcelain with silver lustre



Title: Actor's Mask of a Comic Old Man or Mask of Dionysus
Date: circa 4th century B.C.E.
Medium: Earthenware



Title: Adam and Eve in Paradise (Historia von Adam und Eva)
Date: 1745 (design), 1774 - 1813 (execution)
Primary Maker: Johann Friedrich Eberlein
Medium: Hard-paste porcelain with overglaze enamel decoration

Title: After Dinner Cup and Saucer
Date: circa 1930 - 1940
Primary Maker: Jean Luce
Medium: Glazed porcelain with gold resist decoration

Title: Alabastron
Date: n.d.
Medium: Slip-painted earthenware



Title: Alabastron
Date: n.d.
Medium: Earthenware with slip-painted decoration



Title: Alabastron
Date: n.d.
Medium: Earthenware with slip-painted decoration



Title: Alabastron
Date: n.d.
Medium: Earthenware with slip-painted decoration



Title: Amorial Plate (with Arms of Lee Quartering Astley)
Date: circa 1730
Primary Maker: Unknown Artist
Medium: Porcelain with overglaze enamel and gilt decoration



Title: Amphora

Date: circa late 7th century B. C.E.

Medium: Earthenware with slip-painted decoration

Title: Amphora Handle

Date: circa 3rd century B.C.E.

Medium: Unglazed earthenware

Title: Architectural Detail, Mold for Vase

Date: n.d.

Primary Maker: Unknown Artist

Medium: Stone

Title: Architectural Detail, Mold for Vase

Date: n.d.

Primary Maker: Unknown Artist

Medium: Stone

Title: Architectural Fragment: Antefix as a Mask of a Satyr

Date: n.d.

Medium: Earthenware with cold-painted decoration

Title: Architectural Fragment: Cornice

Date: 1906

Primary Maker: Louis H. Sullivan

Medium: Unglazed molded terracotta

Title: Architectural Fragment: Cornice

Date: 1906

Primary Maker: Louis H. Sullivan

Medium: Unglazed molded terracotta



Title: Architectural Ornament with Brick Surround

Date: 1884

Primary Maker: Louis H. Sullivan

Medium: Terracotta ornament, disassembled

Title: Argive Late Geometric Vase Fragment: Female Chorus Performing a Ring Dance

Date: circa 725 - 700 B.C.E.

Medium: Earthenware (buff) with black painted decoration



Title: Aryballos

Date: n.d.

Medium: Earthenware with slip-painted decoration



Title: Aryballos

Date: n.d.

Medium: Earthenware with slip-painted decoration



Title: Aryballos

Date: late 6th century B.C.E.

Medium: Earthenware with slip-painted decoration

Title: Askos

Date: n.d.

Medium: Earthenware with slip-painted decoration

Title: Baluster Jar with Cover

Date: circa 1640

Medium: White porcelain with underglaze blue decoration

Title: Base ring bottle

Date: 1450 - 1350 B.C.E.

Medium: Clay with white slip and paint

Title: Base Ring Bowl

Date: 1450 - 1350 B.C.E.

Medium: Pottery



Title: Base Ring Bowl

Date: 1450 - 1350 B.C.E.

Medium: Pottery



Title: Base-Ring Jug (or Bilbil)

Date: 1425/15 - 1340 B.C.E.

Medium: Slip-painted earthenware

Title: Basket

Date: circa 1800

Primary Maker: Wedgwood

Medium: Creamware

Title: Basket

Date: circa 1800

Primary Maker: Wedgwood

Medium: Creamware

Title: Basket

Date: circa 1800

Primary Maker: Wedgwood

Medium: Creamware

Title: Beaker Matchpot

Date: circa 1810

Primary Maker: Spode

Ceramic Works

Medium: Porcelain with
overglaze enamel and gilt
decoration

Title: Bichrome Bowl

Date: circa 1050 - 950 B.C.E.

Medium: Reddish clay with
buff slip and black and red paint

Title: Bichrome III Bowl

Date: circa 900 - 700 B.C.E.

Medium: Earthenware (red)
with light-colored slip and black
and red painted decoration



Title: Bichrome IV

Amphora

Date: 700 - 475 B.C.E.

Medium: Earthenware (light
buff) with light slip and black
and purple painted decoration



Title: Bichrome Jug

Date: circa 950 - 850 B.C.E.

Medium: Reddish clay with
black and red paint



**Title: Bichrome Red I
(IV) Bowl**

Date: 750 - 550 B.C.E.

Medium: Earthenware (red)
with buff slip and black and
reddish-purple painted
decoration



Title: Bichrome Red I (IV) Jug
Date: circa 700 - 550 B.C.E.
Medium: Earthenware (red) with reddish slip and red and black accessory painted decoration



Title: Birth Bowl
Date: circa 1575
Primary Maker: Orazio Fontana
Medium: Polychrome tin-glazed earthenware (maiolica)



Title: Black-Figure Amphora
Date: circa 530 B.C.E.
Medium: Earthenware with slip-painted decoration



Title: Black-Figure Column Krater Handle Fragment: Two Heads (male and female) in Profile
Date: 7th - early 6th century B.C.E.
Medium: Earthenware with slip-painted decoration



Title: Black-Figure Dinos Rim Fragment: Ivy Leaves, Chariot Race, Warriors, Part of a Warship
Date: circa 540 - 530 B.C.E.
Medium: Earthenware with slip-painted decoration



Title: Black-Figure Eye Kylix: Dionysos Seated Between Two Saytrs
Date: circa 510 - 100 B.C.E.
Medium: Earthenware with slip-painted decoration

Title: Black Figure Kabiric Kantharos
Fragment: Procession or Festivity, Acrobats with Three-legged Table
Date: 410 - 400 B.C.E.
Medium: Earthenware with slip-painted and incised decoration

Title: Black Figure Kabiric Kantharos
Fragment: Scene of Banqueting, Servants
Date: 5th century B.C.E.
Medium: Earthenware with slip-painted and incised decoration

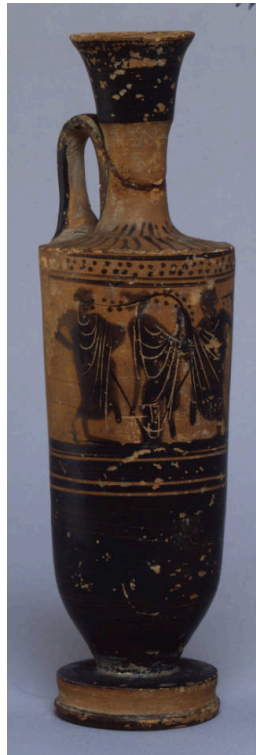
Title: Black Figure Kabiric Askos Fragment: Goat being held by horns
Date: 420 - 400 B.C.E.
Medium: Earthenware with slip-painted and incised decoration

**Title: Black-Figure Kylix:
A Satyr Carrying a
Garland and Vine
Following a Maenad with
Two Garlands and Vines**
Date: n.d.
Medium: Earthenware with
slip-painted decoration

**Title: Black-Figure Kylix
Fragment**
Date: late 6th century B.C.E.
Medium: Earthenware with
slip-painted decoration

**Title: Black-Figure
Lekythos**
Date: circa 510 - 500 B.C.E.
Medium: Earthenware with
slip-painted decoration

**Title: Black-Figure
Lekythos**
Date: circa 510 - 500 B.C.E.
Medium: Earthenware with
slip-painted decoration



**Title: Black-Figure
Lekythos**
Date: circa late 6th - early 5th
century B.C.E.
Medium: Earthenware with
slip-painted decoration

**Title: Black-Figure
Lekythos: Geometric
and Palmette Designs**
Date: circa 470 - 450 B.C.E.
Medium: Earthenware with
slip-painted and cold-painted
decoration



Title: Black-Figure
Lekythos: Two Pairs of Women, Each Wearing a Dress and Mantle, with One Seated and One Standing

Date: n.d.

Medium: Earthenware with slip-painted decoration



Title: Black-Figure
Loutrophoros Amphora

Date: circa 480 - 470 B.C.E.

Medium: Earthenware with slip-painted and cold-painted decoration

Title: Black-Figure
Miniature Panathenaic Amphora

Date: n.d.

Medium: Earthenware with slip-painted decoration



Title: Black-Figure
Nikosthenic Amphora
Handle Fragment:
Satyr's Head with Border Design on Fragment

Date: circa 535 - 520 B.C.E.

Primary Maker: Unknown Artist

Medium: Earthenware with slip-painted decoration

Title: Black-Figure
Panathenaic Amphora
Fragment: Inscription

Date: 352 - 351 B.C.E.

Medium: Earthenware with slip-painted decoration

Title: Black-Figure
Panathenaic Amphora
Fragment: Letters and Line

Date: n.d.

Medium: Earthenware with slip-painted decoration



Title: Black-Figure Panathenaic Amphora Fragment: Two Runners
Date: circa 530 B.C.E.
Medium: Earthenware with slip-painted decoration



Title: Black-Figure Pelike: Two Visitors to the Sphinx (Oedipus Confronting the Theban Sphinx?) (obverse), Hermes Playing the Flute to two Satyrs (reverse)
Date: circa 490 B.C.E.
Primary Maker: Eucharides Painter
Medium: Earthenware with slip-painted decoration



Title: Black-Figure Plate: Prancing Goat
Date: circa 510 - 490 B.C.E.
Medium: Earthenware with slip-painted decoration

Title: Black-Figure Sherd: Athena Featured
Date: circa 540 - 530 B.C.E.
Primary Maker: Swing Painter
Medium: Earthenware with slip-painted decoration

Title: Black-Figure Skyphos
Date: n.d.
Medium: Earthenware with slip-painted decoration

Title: Black-Figure Squat Lekythos
Date: early 5th century B.C.E.
Medium: Clay with black glaze and white and red slip decoration

Title: Black-Figure Stand Fragment (base): Ganymede with Hoop on Back
Date: n.d.
Medium: Earthenware with slip-painted decoration

Title: Black Figure Vessel Sherd
Date: n.d.
Medium: Earthenware with slip-painted decoration

Title: Black-Figure Vessel Sherd: Owl and Human Foot
Date: late 6th century B.C.E.
Medium: Earthenware with slip-painted decoration

Title: Black-Figure Vessel Sherd: Part of a Human (Shoulder and hair)
Date: early 5th century B.C.E.
Medium: Earthenware with slip-painted decoration

Title: Black-Glazed Kylix
Date: circa 5th century B.C.E.
Medium: Earthenware with slip-painted decoration

Title: Black-on-Red I (III) Jug
Date: circa 900 - 700 B.C.E.
Medium: Earthenware (red) with red-brown slip and matte black painted decoration

Title: Black-on-Red I (III) or II (IV) Jug
Date: circa 850 - 600 B.C.E.
Medium: Earthenware (reddish) with lustrous red slip and black accessory painted decoration

Title: Black-on-Red III (V) Juglet
Date: circa 600 - 475 B.C.E.
Medium: Earthenware (reddish) with red slip and black painted decoration



Title: Black Slip Flask
Date: circa 1750 - 1700 B.C.E.
Medium: Light clay, polished black slip



Title: Bottle
Date: circa 1300 - 1428
Medium: Burnished unglazed earthenware



Title: Bottle
Date: circa 1300 - 1438
Medium: Burnished unglazed earthenware

Title: Bottle
Date: circa 16th century
Primary Maker: Unknown Artist
Medium: Stoneware

Title: Bottle

Date: 1960s

Primary Maker: Rose Cabat

Medium: Glazed porcelain

Title: Bottle

Date: 1950 - 1959

Primary Maker: Aaron Bohrod

Medium: Glazed stoneware

Title: Bottle

Date: 19th century

Primary Maker: Unknown

Artist

Medium: Glazed porcelain
(white ware, baekja)



Title: Bottle-Shaped Vase

Date: 1920 - 1924

Primary Maker: Wilhelm Kåge

Medium: Brown and black
glazed stoneware



**Title: Bottle with Plant
Decoration**

Date: Late 15th - early 16th
century

Primary Maker: Unknown
Artist

Medium: Glazed stoneware
(buncheong) with underglaze
iron-oxide (jeolwha) decoration

Title: Bowl

Date: circa 1928

Primary Maker:

Steingutfabriken Velten-
Vordamm, Berlin, Germany

Medium: Glazed earthenware
with polychrome decoration

Title: Bowl

Date: 1929 (design, in
production 1929 - 1962?)

Primary Maker: Otto Lindig

Medium: Glazed slip-cast
earthenware

Title: Bowl

Date: 1929 (design, in
production 1929 - 1962?)

Primary Maker: Otto Lindig

Medium: Glazed slip-cast
earthenware

Title: Bowl

Date: 1929 (design, in
production 1929 - 1962?)

Primary Maker: Otto Lindig

Medium: Glazed slip-cast
earthenware

Title: Bowl

Date: 1940s - 1950s

Primary Maker: Wilhelm Kåge

Medium: Glazed stoneware
decorated with incised fish

Title: Bowl

Date: 1940s - 1950s

Primary Maker: Wilhelm Kåge

Medium: Glazed stoneware
with incised fish decoration



Title: Bowl

Date: 1930

Primary Maker: Wilhelm Kåge

Medium: Glazed stoneware
with slip-painted decoration
(Farstaware)



Title: Bowl

Date: n.d.

Primary Maker: Otto Natzler

Medium: Glazed earthenware

Title: Bowl

Date: circa 1745 - 1760

Primary Maker: Bow

Porcelain Factory
Medium: Porcelain with
overglaze enamel painting



Title: Bowl

Date: 1965

Primary Maker: Otto Natzler

Medium: Earthenware, green



Title: Bowl

Date: 1964

Primary Maker: Otto Natzler

Medium: Glazed earthenware



Title: Bowl

Date: 1960

Primary Maker: Otto Natzler

Medium: Glazed earthenware



Title: Bowl

Date: circa 1960

Primary Maker: Otto Natzler

Medium: Earthenware with
uranium glaze

Title: Bowl

Date: circa 1960

Primary Maker: Otto Natzler

Medium: Glazed earthenware, iridescent sang reduction and moss green glaze



Title: Bowl

Date: circa 1940

Primary Maker: Glen Lukens

Medium: Partially glazed earthenware

Title: Bowl

Date: n.d.

Medium: Earthenware with slip-painted decoration

Title: Bowl

Date: possibly 20th century

Primary Maker: Haviland & Co.

Medium: Porcelain



Title: Bowl

Date: circa 1775

Primary Maker: Frankenthal Porcelain Factory

Medium: Hard-paste porcelain with overglaze enamel and gilt decoration

Title: Bowl

Date: n.d.

Medium: Porcelain, underglaze blue and enamel painting with gilt

Title: Bowl

Date: 1770 - 1780

Medium: Blue tin-glazed earthenware (delftware)

Title: Bowl

Date: 1770 - 1780

Medium: Blue tin-glazed earthenware (delftware)

Title: Bowl

Date: circa 1770 - 1780

Primary Maker: Royal Worcester Porcelain factory

Medium: Porcelain with embossed and underglaze blue decoration

Title: Bowl

Date: n.d.

Medium: Earthenware

Title: Bowl

Date: circa 3rd century B.C.E.

Medium: Earthenware with
slip-painted decoration

Title: Bowl

Date: 13th century

Medium: Glazed blue
earthenware



Title: Bowl

Date: 1908 - 1971

Primary Maker: Otto Natzler

Medium: Earthenware with
'Hares Fur' glaze of green and
yellow



Title: Bowl

Date: 19th century

Medium: Porcelain with
overglaze polychrome enamel
decoration

Title: Bowl

Date: n.d.

Primary Maker: Sandy Brown

Medium: Partially glazed
stoneware



Title: Bowl

Date: n.d.

Primary Maker: Maria Stewart

Medium: Glazed porcelain



Title: Bowl

Date: n.d.

Primary Maker: Ruth

Duckworth
Medium: Partially glazed
stoneware



Title: Bowl

Date: early 1960s (before
1964)

Primary Maker: Erik Pløen

Medium: Glazed stoneware



Title: Bowl
Date: 1908 - 1971
Primary Maker: Otto Natzler
Medium: Glazed earthenware

Title: Bowl
Date: n.d.
Primary Maker: Otto Natzler
Medium: Glazed earthenware
(blue and rose)



Title: Bowl
Date: circa 1948
Primary Maker: Bernard Leach
Medium: Glazed stoneware
with slip-painted and incised
decoration



Title: Bowl
Date: n.d.
Primary Maker: Unknown
Artist
Medium: Porcelain



Title: Bowl
Date: n.d.
Primary Maker: Unknown
Artist
Medium: Porcelain



Title: Bowl
Date: n.d.
Primary Maker: Unknown
Artist
Medium: Porcelain



Title: Bowl
Date: n.d.
Primary Maker: Unknown
Artist
Medium: Porcelain



Title: Bowl
Date: circa 1948
Primary Maker: Marguerite
Friedländer Wildenhain
Medium: Glazed stoneware
with slip-painted and incised
decoration



Title: Bowl
Date: n.d.
Primary Maker: Janice
Tchalenko
Medium: Glazed earthenware



Title: Bowl
Date: 1900 - 1976
Primary Maker: Sakuma Totaro the Elder
Medium: Glazed earthenware (Mashiko kilns)



Title: Bowl
Date: circa 1950
Primary Maker: Kenji Funaki
Medium: Glazed earthenware with slip-painted decoration (Fushina Kilns)



Title: Bowl
Date: 1900 - 1976
Primary Maker: Sakuma Totaro the Elder
Medium: Glazed earthenware (Mashiko kilns)



Title: Bowl
Date: n.d.
Primary Maker: David Garland
Medium: Glazed earthenware



Title: Bowl
Date: circa 17th - 18th century
Primary Maker: Unknown Artist
Medium: Vietnamese stoneware with underglaze and inglaze blue decoration

Title: Bowl
Date: 5th century B.C.E.
Medium: Slip-painted (in black) earthenware



Title: Bowl
Date: 17th century
Primary Maker: Unknown Artist
Medium: Glazed stoneware (K: buncheong) with partial underglaze slip-painted decoration (J: Irabo type)



Title: Bowl
Date: 12th century
Primary Maker: Unknown Artist
Medium: Stoneware with blue-green (celadon) glaze



Title: Bowl
Date: 15th - 16th century
Primary Maker: Unknown Artist
Medium: Glazed porcelain with underglaze cobalt blue painted decoration



Title: Bowl
Date: 16th century
Primary Maker: Unknown
Artist
Medium: Glazed porcelain
(white ware, baekja) (Ido type)



Title: Bowl
Date: 19th century
Primary Maker: Unknown
Artist
Medium: Glazed porcelain
(white ware, baekja)



Title: Bowl
Date: n.d.
Primary Maker: Sakuma
Family
Medium: Glazed earthenware
(Mashiko kilns)



Title: Bowl
Date: n.d.
Medium: Glazed earthenware



Title: Bowl
Date: n.d.
Medium: Glazed earthenware
(Hagi kilns)



Title: Bowl
Date: Qianlong reign (1736 - 1795)
Primary Maker: Unknown
Artist
Medium: Porcelain with
underglaze blue decoration



Title: Bowl
Date: 16th century
Primary Maker: Unknown
Artist
Medium: Glazed porcelain
(white ware, baekja)

Title: Bowl
Date: 960 - 1279
Medium: Glazed (brown)
earthenware

Title: Bowl
Date: 960 - 1279
Medium: Glazed (brown)
earthenware

Title: Bowl

Date: 11th - 12th century

Medium: Glazed (white)
porcelain (Ding ware)

Title: Bowl

Date: 11th - 12th century

Medium: Glazed (white)
porcelain (Ding ware)



Title: Bowl

Date: 15th - 16th century

Primary Maker: Unknown
Artist
Medium: Glazed porcelainous
stoneware with scalloped edge
and underglaze-blue decoration

Title: Bowl

Date: early 17th century

Primary Maker: Unknown

Artist

Medium: Porcelain with cobalt
blue underglaze

Title: Bowl Fragment

Date: first half of 1st century

Medium: Slip-glazed
earthenware with stamped
decoration

Title: Bowl Fragment

Date: circa 450 B.C.E.

Medium: Slip-glazed
earthenware with black glaze
and stamped decoration

Title: Bowl Fragment

Date: n.d.

Primary Maker: Unknown

Artist

Medium: Earthenware, slip-
glazed with molded decoration
(Megarian ware)

Title: Bowl Fragment

Date: circa 250 B.C.E.

Primary Maker: Unknown

Artist

Medium: Slip-glazed
earthenware with molded
decoration (Megarian ware)

Title: Bowl Fragment

Date: circa 3rd century B.C.E.

Primary Maker: Unknown

Artist

Medium: Slip-glazed
earthenware with black paint
and molded decoration
(Megarian ware)

**Title: Bowl Fragment
with Relief of
Kalathiskos Dancer**

Date: 15 B.C.E. - 30 C.E.

Medium: Slip-glazed
earthenware with molded
decoration (Arrentine ware)

**Title: Bowl or Casserole
Lid**

Date: 3rd century

Medium: Earthenware

Title: Bowl Sherd

Date: n.d.

Medium: Pink-orange clay
with black paint



**Title: Bowl with Cranes,
Willow, and Lotus Plant
Decoration**

Date: 13th century

Primary Maker: Unknown
Artist

Medium: Stoneware with blue-
green (celadon) glaze and
black-and-white clay inlaid
(sanggam) decoration

**Title: Bowl with Deer,
Crane and Lingzhi
Fungus Longevity
Designs**

Date: 19th century

Primary Maker: Unknown
Artist

Medium: White porcelain bowl
with underglaze blue
decoration of images of
longevity symbols: deer, crane,
and lingzhi fungus, with the
Chinese character for
'longevity' (shou) in bottom
center of basin in underglaze
blue



**Title: Bowl with Eight
Immortals**

Date: Qianlong reign (1736 -
1795)

Primary Maker: Unknown
Artist

Medium: Porcelain with
underglaze blue decoration



**Title: Bowl with Lotus
Petal Decoration**

Date: Late 12th - early 13th
century

Primary Maker: Unknown
Artist

Medium: Stoneware with blue-
green (celadon) glaze and
carved and incised decoration



**Title: Bowl with Peony
Decoration**

Date: 12th century

Primary Maker: Unknown
Artist

Medium: Stoneware with blue-
green (celadon) glaze and
incised and molded decoration

**Title: Boy leaning on
herm**

Date: 2nd - 1st century B.C.E.

Medium: Unglazed
earthenware

**Title: Breakfast Set:
Coffee Pot, Creamer,
Sugar Bowl, Cups and
Saucers**

Date: circa 1830

Primary Maker: Dalovice
(Dallwitz) factory

Medium: Porcelain with
overglaze enamel and gilt
decoration

**Title: Bronze Age Handle
Fragment**

Date: n.d.

Medium: Buff clay with dark
orange-brown paint

**Title: Bronze Age
Pottery Sherd**

Date: n.d.

Medium: Buff clay with light
and dark brown paint

**Title: Bronze Age
Pottery Sherd**

Date: n.d.

Medium: Clay with brown glaze

Title: Bronze Age Sherd

Date: n.d.

Medium: Buff clay with orange
/brown paint

Title: Bronze Age Sherd

Date: n.d.

Medium: Buff clay with slip
and paint, curved spiral pattern

Title: Bronze Age Sherd

Date: n.d.

Medium: Buff clay with brown
paint

**Title: Bronze Age Sherd
with Abbreviated Spiral
Pattern**

Date: n.d.

Medium: Buff clay with orange
/brown paint

Title: Brush Pot

Date: 18th - 19th century

Primary Maker: Unknown
Artist

Medium: Soft-paste porcelain
(huashi) with molded and
applied decoration



Title: Brush Pot
Date: n.d.
Primary Maker: Unknown
Artist
Medium: Porcelain

Title: Bucchero jug
Date: circa 1150 - 1075 B.C.E.
Medium: Light clay with grey slip



Title: Buddhist Arhat (K: Nahan)
Date: 12th century
Primary Maker: Unknown
Artist
Medium: Stoneware with celadon glaze, and underglaze incised decoration, and inlays of white and iron-oxide brown slip-painted decoration (sanggan).



Title: Bull or Pig (?)
Date: n.d.
Medium: Earthenware with cold-painted decoration



Title: Bull or Pig (?)
Date: n.d.
Medium: Earthenware



Title: Bull or Pig (?)
Date: n.d.
Medium: Earthenware



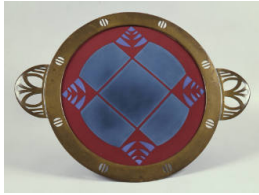
Title: Bull or Pig (?)
Date: n.d.
Medium: Earthenware



Title: Bull or Pig (?)
Date: n.d.
Medium: Earthenware



Title: Bull (?) or Pig (?)
Date: n.d.
Medium: Earthenware with cold-painted decoration



Title: Cake Tray

Date: 1906

Primary Maker: Christian Neureuther

Medium: Glazed earthenware with die-cut and hand-wrought copper border and handles



Title: Canary Lustre Cup

Date: circa 1831

Primary Maker: Unknown Artist

Medium: Glazed earthenware with canary yellow glaze and silver resist lustre design



Title: Candlestick in Feline Form

Date: 1927 (design [and probable fabrication])

Primary Maker: Gudrun Baudisch

Medium: Glazed hand modeled earthenware with painted glaze decoration



Title: Candlestick in Feline Form

Date: 1927 (design [and probable fabrication])

Primary Maker: Gudrun Baudisch

Medium: Glazed hand modeled earthenware with painted glaze decoration



Title: Carafe

Date: 1937 (design, in production 1939 - circa 1959)

Primary Maker: Russel Wright

Medium: Cast glazed earthenware

Title: Casserole Lid Handle or Platter Fragment

Date: 1st century

Medium: Earthenware with slip-painted decoration



Title: Centaur

Date: 1956

Primary Maker: Pablo Picasso

Medium: Molded partially glazed earthenware plate with engobe decoration

Title: Ceramic Blade

Date: n.d.

Primary Maker: Richard Slee

Medium: Glazed porcelain

Title: Ceremonial Ritual Vessel

Date: 1973

Primary Maker: Rick Dillingham (James Richard II)

Medium: Biscuit fire clay with glazed interior

Title: Charger

Date: 1750 - 1760

Medium: Polychrome tin-glazed earthenware (delftware)

Title: Charger, The Golden Flower Pot (De Vergulde Bloempot)

Date: 1734 - 1764

Primary Maker: Unknown Artist

Medium: Blue and yellow tin-glazed earthenware (delftware)



Title: Chosen Shino-Style Tea Bowl

Date: n.d.

Medium: Glazed earthenware



Title: Chun-Type Bowl

Date: n.d.

Primary Maker: Komatsu, Koichiro

Medium: Glazed earthenware

Title: Coarse Ware Cup

Date: 325 - 50 B.C.E.

Medium: Pottery



Title: Cocoa Pot

Date: circa 1935

Primary Maker: Villeroy & Boch

Medium: Glazed slip-cast earthenware with partial monochrome (pale blue) decoration



Title: Cocoa Pot

Date: 1923 (design and probable manufacture)

Primary Maker: Otto Lindig

Medium: Glazed cast stoneware (pot) and hand-turned with hand-finishing on the potter's wheel (lid)



Title: Coffee Cup

Date: circa 1790

Primary Maker: Unknown Artist

Medium: Porcelain with blue and red/orange and gilt decoration

Title: Coffee Cup and Saucer

Date: 1929 (design, in production 1929 - 1962)

Primary Maker: Otto Lindig

Medium: Glazed slip-cast earthenware

Title: Coffee Cup and Saucer

Date: 1929 (design, in production 1929 - 1962)
Primary Maker: Otto Lindig
Medium: Glazed slip-cast earthenware

Title: Coffee Pot

Date: 1929 (design, in production 1929 - 1962)
Primary Maker: Otto Lindig
Medium: Glazed slip-cast earthenware

Title: Coffee Pot

Date: circa 1790 - 1810
Primary Maker: Doccia Porcelain Factory
Medium: Porcelain with overglaze enamel and gilt decoration



Title: Coffee Pot

Date: circa 1922 - 1923 (probable design and manufacture)
Primary Maker: Otto Lindig
Medium: Hand-thrown stoneware (beige fabric) with transparent (yellowish white) inner glaze and dark brown outer glaze



Title: Coffee Pot

Date: circa 1870s
Medium: Porcelain with polychrome and gilded overglaze decoration



Title: Conical Bowl

Date: 12th - 13th century
Medium: Glazed, high-fired earthenware, decorated in white slip over a frit body with underglaze blue and black painting



Title: Couple on Boat

Date: n.d.
Primary Maker: Prima Vera Factory
Medium: Porcelain with silver lustre

Title: Covered Bowl

Date: 15th - 16th century
Primary Maker: Unknown Artist
Medium: Glazed porcelainous stoneware with underglaze-blue decoration

Title: Covered Box

Date: 14th - 16th century
Primary Maker: Unknown Artist
Medium: Glazed stoneware with underglaze-brown decoration (Si Satchanalai ware)

Title: Covered Butter Dish

Date: circa 1905

Primary Maker: Josef Böck

Medium: Porcelain with overglaze enamel decoration

Title: Covered Butter Dish: Cover

Date: circa 1905

Primary Maker: Josef Hoffmann

Medium: Glazed porcelain with overglaze enamel decoration

Title: Covered Butter Dish: Dish

Date: circa 1905

Primary Maker: Josef Böck

Medium: Glazed porcelain with overglaze enamel decoration



Title: Covered Cinerary or Reliquary (Sarira) Urn

Date: 15th - 16th century

Primary Maker: Unknown Artist

Medium: Glazed porcelain with modeled and partial green (celadon) glaze decoration



Title: Covered Cinerary Urn

Date: 8th - 9th century

Primary Maker: Unknown Artist

Medium: Unglazed stoneware with incised and impressed decoration and natural ash glaze deposits



Title: Covered Jar

Date: n.d.

Primary Maker: Shoji Hamada

Medium: Salt-glazed earthenware with cobalt blue and comb decoration



Title: Covered Jar

Date: n.d.

Primary Maker: Bernard Leach

Medium: Earthenware with Tenmoku (Japanese dark brown to black) glaze and wax-resist decoration



Title: Covered Jar

Date: 1956 - 1957

Primary Maker: Peter Voulkos

Medium: Glazed stoneware with negative stencil relief and underglaze iron-oxide slip- and cobalt blue slip-painted decoration



Title: Covered Jar

Date: 1914

Primary Maker: Ruskin Pottery

Medium: Iridescent glazed earthenware



Title: Covered Jar

Date: late 15th - early 16th century

Primary Maker: Unknown Artist

Medium: Glazed porcelainous stoneware with underglaze-blue decoration

Title: Covered jar

Date: 960 - 1126

Medium: Glazed (white) porcelain



Title: Covered Meiping Vase

Date: 16th - early 17th century

Primary Maker: Unknown Artist

Medium: Porcelain with cobalt blue underglaze

Title: Covered Sauce Dish

Date: circa 1820

Primary Maker: Spode Ceramic Works

Medium: Ironstone with transfer print and overglaze enamel decoration



Title: Covered Tureen and Platter

Date: circa 1765

Medium: Porcelain with overglaze enamel decoration

Title: Covered Tureen and Platter

Date: circa 1875?

Primary Maker: Mason Factory

Medium: Ironstone, with transfer print decoration



Title: Covered Urn

Date: late 19th century

Medium: Satsuma ware, porcelain with overglaze and gilt decoration



Title: Covered Urn-Shaped Vase

Date: 19th century

Primary Maker: W. Schindler

Medium: Glazed porcelain with underglaze enamel and overglaze gilt decoration

Title: Covered Urn-Shaped Vase

Date: 19th century

Primary Maker: W. Schindler

Medium: Glazed porcelain with underglaze enamel and overglaze gilt decoration

Title: Covered Vanity Dish

Date: circa 1905

Primary Maker: Keramos

Medium: Glazed earthenware

Title: Covered Vegetable Tureen

Date: 1875 - 1880

Primary Maker: Spode Ceramic Works

Medium: Glazed porcelain with transfer and hand-applied decoration ...



Title: Cover for Jar

Date: n.d.

Primary Maker: Bernard Leach

Medium: Earthenware with Tenmoku (Japanese dark brown to black) glaze and wax-resist decoration

Title: Cover for Jar

Date: 960 - 1126

Medium: Glazed (white) porcelain



Title: Cream Jug

Date: 1937 (design, in production 1939 - circa 1959)

Primary Maker: Russel Wright

Medium: Cast glazed earthenware (pinkish tan)



Title: Cup

Date: n.d.

Primary Maker: David Leach

Medium: Glazed stoneware with underglaze slip-painted decoration

Title: Cup

Date: circa 1770

Primary Maker: Sèvres Porcelain Manufactory

Medium: Painted and gilt porcelain



Title: Cup

Date: n.d.

Medium: Earthenware with slip-painted decoration



Title: Cup

Date: 1908 - 1971

Primary Maker: Otto Natzler

Medium: Earthenware with blue-green glaze



Title: Cup
Date: 50 - 150
Medium: Unglazed earthenware (reddish clay)

Title: Cup and Saucer
Date: 1929 (design, in production 1929 - 1962)
Primary Maker: Otto Lindig
Medium: Glazed slip-cast earthenware

Title: Cup and Saucer
Date: circa 1730

Title: Cup and Saucer
Date: 1832 - 1838
Primary Maker: Tucker & Hemphill, Philadelphia, Pennsylvania

Title: Cup and Saucer
Date: circa 1839
Primary Maker: Herend factory, Hungarian
Medium: Porcelain with glazed, gilt and overglaze painted decoration

Title: Cup and Saucer
Date: 20th century
Primary Maker: Meissen Porcelain Manufactory
Medium: Glazed porcelain, based on Marcolini shape



Title: Cup and Saucer
Date: 1923
Primary Maker: Sergei Chekhonin
Medium: Porcelain (pre-Revolution, imperial Russian blank) with underglaze and overglaze enamel decoration

Title: Cup Saucer
Date: circa 1901 - 1902
Primary Maker: Jutta Sika
Medium: Glazed porcelain with overglaze stencil decoration

Title: Cup Saucer
Date: circa 1901 - 1902
Primary Maker: Jutta Sika
Medium: Glazed porcelain with overglaze stencil decoration



Title: Cup Stand

Date: 17th century

Medium: Buncheong
(punch'ong) ware, glazed
stoneware with white clay
inlaid decoration (sanggam)

Title: Cylindrical Vessel

Date: n.d.

Primary Maker: Polia Pillin

Medium: Earthenware with
slip painted decoration



**Title: Decorative
Architectural Block**

Date: late 19th or early 20th
century

Primary Maker: Louis H.
Sullivan

Medium: Glazed terracotta



Title: Deep Bowl

Date: n.d.

Primary Maker: Sakuma
Totaro the Younger
Medium: Glazed earthenware
(Mashiko kilns)



Title: Deep Bowl

Date: n.d.

Primary Maker: Sakuma the
Younger, Totaro
Medium: Glazed earthenware
(Mashiko kilns)

Title: Deep Dish

Date: late 15th - early 16th
century

Primary Maker: Unknown
Artist

Medium: Glazed porcelainous
stoneware with underglaze-
blue decoration



Title: Deep Dish

Date: late 16th century

Primary Maker: Unknown
Artist

Medium: Porcelain with cobalt
blue underglaze



Title: Deep Dish

Date: circa 1600

Primary Maker: Unknown
Artist

Medium: Porcelain with cobalt
blue underglaze

Title: Deep Square Bowl

Date: circa 1945 - 1950

Primary Maker: Sakuma
Totaro the Elder

Medium: Glazed earthenware
(Mashiko kilns)



Title: Deep Tea Bowl
Date: n.d.
Primary Maker: Komatsu, Koichiro
Medium: Glazed earthenware



Title: Deep Tea Bowl
Date: n.d.
Primary Maker: Komatsu, Koichiro
Medium: Glazed earthenware (Naraoki kilns)



Title: Dessert Bowl
Date: 1916 - 1922 (design, facsimile by Noritake, Japan, 1962)
Primary Maker: Frank Lloyd Wright
Medium: Porcelain with polychrome decoration (red, yellow, gray and green)



Title: Ding Tripod
Date: circa 1st century
Medium: Partially glazed stoneware



Title: Dish
Date: circa early 17th century
Medium: Porcelain with underglaze blue-and-white decoration



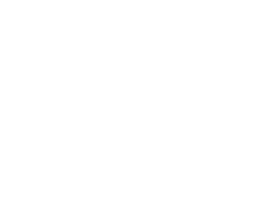
Title: Dish
Date: n.d.
Primary Maker: Unknown Artist
Medium: Porcelain



Title: Dish
Date: 15th century
Primary Maker: Unknown Artist
Medium: Stoneware with green celadon glaze



Title: Dish
Date: 15th century
Primary Maker: Unknown Artist
Medium: Porcelain with cobalt blue underglaze



Title: Dish
Date: circa 1550
Primary Maker: Unknown Artist
Medium: Porcelain with cobalt blue underglaze



Title: Dish
Date: 1590 - 1610
Primary Maker: Unknown
Artist
Medium: Porcelain with cobalt blue underglaze



Title: Dish
Date: late 16th to early 17th century
Primary Maker: Unknown
Artist
Medium: Porcelain with enamel overglazes



Title: Dog Attacking a Bull
Date: n.d.
Primary Maker: Dominikus Auliczek
Medium: Hard-paste porcelain

Title: Eight Sherds of Red-Figure Kylikes: Stems and Tondo Rims
Date: n.d.
Medium: Earthenware with slip-painted decoration



Title: Enthroned Athena
Date: late 6th - early 5th century B.C.E.
Medium: Slip-painted earthenware with cold-painted decoration



Title: Exterior Architectural Ornament for Window
Date: 1884
Primary Maker: Louis H. Sullivan
Medium: Unglazed terracotta

Title: female torso
Date: 4500 - 4000 B.C.E.
Medium: Black terracotta

Title: Feuille de Choux Bowl
Date: circa 1748
Medium: Partial gilt porcelain

Title: Figure of a Woman
Date: mid- 18th century
Medium: White, salt-glazed stoneware, moulded



Title: Figure with Guitar
Date: n.d.
Primary Maker: Prima Vera Factory
Medium: Porcelain with silver lustre



Title: Figure with Musical Instrument
Date: n.d.
Primary Maker: Prima Vera Factory
Medium: Porcelain with silver lustre



Title: Fishbowl
Date: n.d.
Medium: Blue and white ceramic



Title: Flask with Waterfowl and Plant Decoration
Date: First half of 15th century
Primary Maker: Unknown Artist
Medium: Glazed stoneware (buncheong) with black-and-white clay inlaid (sanggam) decoration



Title: Foliate Wine Cup and Stand with Stylized Chrysanthemum
Decoration
Date: circa 1200
Primary Maker: Unknown Artist
Medium: Stoneware with blue-green (celadon) glaze and carved, incised, and black-and-white clay inlaid (sanggam) decoration, with later gold lacquer repairs

Title: Foot
Date: n.d.
Primary Maker: Jill Crowley
Medium: Partially glazed earthenware (raku ware)



Title: Footed Bowl
Date: 1925 - 1926
Primary Maker: Theodor Bogler
Medium: Glazed earthenware with polychrome decoration



Title: Footed Bowl
Date: n.d.
Primary Maker: Beatrice Wood
Medium: Glazed earthenware

Title: Footed Bowl
Date: circa 1948
Primary Maker: Marguerite Friedländer Wildenhain
Medium: Glazed stoneware with incised decoration



Title: Footed Bowl

Date: n.d.

Primary Maker: Sakuma

Totaro the Younger

Medium: Glazed earthenware
(Mashiko kilns)

Title: Footed Bowl

Date: late 15th - early 16th
century

Primary Maker: Unknown
Artist

Medium: Glazed porcelainous
stoneware with underglaze-
blue decoration



**Title: Footed Jar with
Cover**

Date: late 15th - early 16th
century

Primary Maker: Unknown
Artist

Medium: Glazed porcelainous
stoneware with underglaze-
blue decoration

Title: Footed Tray

Date: n.d.

Medium: Porcelain with
underglaze blue-and-white
decoration



**Title: Footed Tray with
'Three Stars'**

Date: 17th century

Medium: Porcelain with
underglaze blue-and-white
decoration

**Title: Forty-Five Sherds
of Red-Figure Vessels**

Date: n.d.

Medium: Earthenware with
slip-painted decoration and
black glaze

**Title: Forty-Four Sherds
of Red-Figure Kylikes:
Figurative Decoration**

Date: n.d.

Medium: Earthenware with
slip-painted decoration

**Title: Four Fragments
from Red-Figure Open
Vase**

Date: n.d.

Primary Maker: Syleus Painter

Medium: Earthenware with
slip-painted decoration

**Title: Four Lamp
Fragments**

Date: n.d.

Medium: Slip-painted
earthenware

Title: Four-Lobed Tray

Date: 1925 - 1926

Primary Maker: Theodor Bogler

Medium: Glazed earthenware with polychrome decoration

Title: fragment

Date: 4500 - 4000 B.C.E.

Medium: Black terracotta

Title: Fragment from a Iekanis

Date: 5th century B.C.E.

Title: fragment, lower torso

Date: 4500 - 4000 B.C.E.

Medium: Black terracotta

Title: fragment, lower torso-female

Date: 4500 - 4000 B.C.E.

Medium: Black terracotta



Title: Fragment of a Black-figure Plaque: Burial Mourning Scene (Prothesis)

Date: 500 - 480 B.C.E.

Medium: Earthenware with slip-painted decoration

Title: Fragment of a Bowl

Date: n.d.

Medium: Earthenware with red and black paint

Title: Fragment of a Bowl: Base with Decorative Medallion

Date: 3rd - 2nd century B.C.E.

Medium: Slip-painted earthenware with molded decoration in relief with leaves radiating from central medallion



Title: Fragment of a Bronze Ritual Vessel Casting Mold

Date: circa 13th - 11th century B.C.E.

Medium: Unglazed buff earthenware

Title: Fragment of a Flat Bottomed Plate

Date: 1st century

Medium: Slip-glazed earthenware



Title: Fragment of a Kylix

Date: 1300 - 1230/1200 B.C.E.

Medium: Earthenware with slip-painted decoration

Title: Fragment of an Incense Burner (?)

Date: circa 50 B.C.E. - 100 C.E.

Medium: Earthenware

Title: Fragment of a Panathenaic Amphora

Date: circa late 6th century B.C.E.

Medium: Reddish clay with dark paint

Title: Fragment of a Red-Figure Cup

Date: early 5th century B.C.E.

Medium: Earthenware with slip-painted decoration



Title: Fragment of a Vessel

Date: circa 11th century B.C.E.

Medium: Unglazed light buff earthenware (whiteware?) with incised and molded decoration



Title: Fragment of a Vessel

Date: circa 11th century B.C.E.

Medium: Unglazed light gray earthenware (grayware) with combed and coiled decoration



Title: Fragment of a Vessel

Date: circa 11th century B.C.E.

Medium: Unglazed light gray earthenware (grayware) with incised and applied decoration



Title: Fragment of a Vessel

Date: circa 11th century B.C.E.

Medium: Unglazed dark gray earthenware (grayware) with incised and applied decoration



Title: Fragment of a Vessel

Date: circa 11th century B.C.E.

Medium: Unglazed red earthenware (redware) with beaten paddle



Title: Fragment of a Vessel

Date: circa 11th century B.C.E.

Medium: Unglazed red earthenware (redware) with beaten paddle



Title: Fragment of a Vessel

Date: circa 11th century B.C.E.

Medium: Unglazed red earthenware (redware) with beaten paddle



Title: Fragment of a Vessel

Date: circa 11th century B.C.E.

Medium: Unglazed red earthenware (redware) with combed decoration

Title: Fragment of Red Figure Closed Vase

Date: n.d.

Medium: Earthenware with slip-painted decoration

Title: Fragment of Red Figure Jar

Date: second half of 5th century B.C.E.

Medium: Earthenware with slip-painted decoration

Title: Fragment of Red-Figure Jar (Stamnos?)

Date: circa 460 B.C.E.

Primary Maker: Agrigento

Medium: Earthenware with slip-painted decoration

Title: Fragment of Red Figure Kylix

Date: n.d.

Medium: Earthenware with slip-painted decoration

Title: Fragment of Red Figure Kylix

Date: circa mid- 5th century B. C.E.

Medium: Earthenware with slip-painted decoration

Title: Fragment of Red-Figure Kylix

Date: circa 450 B.C.E.

Medium: Earthenware with slip-painted decoration

Title: Fragment of Red-Figure Kylix

Date: circa 500 - 475 B.C.E.

Medium: Earthenware with slip-painted decoration

Title: Fragment of Red-Figure Kylix Rim

Date: first half of 5th century B.C.E.

Primary Maker: Brygos Painter
Medium: Earthenware with slip-painted decoration

Title: fragment - perhaps a bed

Date: 4500 - 4000 B.C.E.

Medium: Black unglazed terracotta

Title: Fragments of Red-Figure Kylix (Nine Pieces)

Date: n.d.

Primary Maker: Painter of Brussels

Medium: Earthenware with slip-painted decoration



Title: Free-Form Bowl

Date: n.d.

Primary Maker: Gertrud Natzler

Medium: Glazed earthenware (iridescent black)



Title: Free-form Dish

Date: 1908 - 1971

Primary Maker: Otto Natzler

Medium: Earthenware with blue-green glaze



Title: Funerary Vase

Date: 13th century

Primary Maker: Unknown Artist

Medium: Yingqi ware (glazed stoneware)

Title: Funerary Vase

Date: 13th century

Primary Maker: Unknown Artist

Medium: Yingqing ware (glazed stoneware)



Title: Funerary Vessel
Date: 13th century
Primary Maker: Unknown
Artist:
Medium: Yingqi ware (glazed stoneware)



Title: Funerary Vessel with Lid
Date: 13th century
Medium: Glazed stoneware with qingbai glaze and applied molded and modeled decoration



Title: Funerary Vessel with Lid
Date: 13th century
Medium: Glazed stoneware with qingbai glaze and applied and molded and modeled decoration



Title: Funnel-Shaped Bowl
Date: circa 1945?
Primary Maker: Otto Natzler
Medium: Glazed earthenware



Title: Fusiform Unguentarium
Date: 3rd - 1st century B.C.E.
Medium: Earthenware



Title: Geometric Kantharos/Bowl
Date: late 8th - early 7th century B.C.E.
Medium: Earthenware with slip-painted decoration



Title: Goat and Bee Creamer
Date: 1749
Medium: Painted porcelain

Title: Gourd Jug
Date: 1875/1850 - 1750 B.C.E.
Medium: Slip painted earthenware, incised decoration



Title: Gravy Boat
Date: 1937 (design, in production 1939 - circa 1959)
Primary Maker: Russel Wright
Medium: Cast glazed earthenware

Title: Green Wedge

Date: n.d.

Primary Maker: Carol McNicoll

Medium: Glazed earthenware



Title: Guan (bowl)

Date: circa 2500 - 2200 B.C.E.

Medium: Unglazed earthenware with slip-painted decoration



Title: Guan (bowl)

Date: circa 2500 - 2200 B.C.E.

Medium: Unglazed earthenware with slip-painted decoration



Title: Guan (bowl with handles)

Date: circa 2500 - 2200 B.C.E.

Medium: Unglazed earthenware with slip-painted and modeled decoration



Title: Guan (bowl with handles)

Date: circa 2500 - 2200 B.C.E.

Medium: Unglazed earthenware with slip-painted decoration



Title: Guan (bowl with handles)

Date: circa 2500 - 2200 B.C.E.

Medium: Unglazed earthenware with slip-painted decoration



Title: Guan (bowl with handles)

Date: circa 2500 - 2200 B.C.E.

Medium: Unglazed earthenware with slip-painted decoration



Title: Guan (bowl with handles)

Date: circa 2500 - 2200 B.C.E.

Medium: Unglazed earthenware with slip-painted decoration



Title: Guan (bowl with handles)

Date: circa 2500 - 2200 B.C.E.

Medium: Unglazed earthenware with slip-painted decoration



Title: Guan (bowl with handles)
Date: circa 2500 - 2200 B.C.E.
Medium: Unglazed earthenware with slip-painted decoration

Title: Guan (bowl with handles)
Date: circa 2500 - 2200 B.C.E.
Medium: Unglazed earthenware with slip-painted decoration



Title: Guan (bowl with handles)
Date: circa 2500 - 2200 B.C.E.
Medium: Unglazed earthenware with slip-painted decoration



Title: Guan (bowl with lobed handles)
Date: circa 2500 - 2200 B.C.E.
Medium: Unglazed earthenware with slip-painted decoration



Title: Guan (bowl with looped handles)
Date: circa 2500 - 2200 B.C.E.
Medium: Unglazed earthenware with slip-painted decoration



Title: Guan (bowl with looped handles)
Date: circa 2500 - 2200 B.C.E.
Medium: Unglazed earthenware with slip-painted decoration (in red and black on buff colored body)



Title: Guan (bowl with looped handles)
Date: circa 2500 - 2200 B.C.E.
Medium: Unglazed earthenware with slip-painted decoration



Title: Guan (bowl with looped handles)
Date: circa 2500 - 2200 B.C.E.
Medium: Unglazed earthenware with slip-painted decoration



Title: Guan (bowl with looped handles)
Date: circa 2500 - 2200 B.C.E.
Medium: Unglazed earthenware with slip-painted decoration



Title: Guan (bowl with looped handles)
Date: circa 2500 - 2200 B.C.E.
Medium: Unglazed earthenware with slip-painted decoration



Title: Guan (bowl with looped handles)
Date: circa 2500 - 2200 B.C.E.
Medium: Unglazed earthenware with slip-painted decoration



Title: Guan (bowl with looped handles)
Date: circa 2500 - 2200 B.C.E.
Medium: Unglazed earthenware with slip-painted decoration



Title: Guan (bowl with looped handles)
Date: circa 2500 - 2200 B.C.E.
Medium: Unglazed earthenware with slip-painted decoration



Title: Guan (bowl with looped handles)
Date: circa 2500 - 2200 B.C.E.
Medium: Unglazed earthenware with slip-painted decoration

Title: Guan Jar
Date: circa 2nd - 1st century B.C.E.
Medium: Stoneware with beaten or impressed repeat-pattern decoration and partial natural ash glaze



Title: Guan-shaped Jarlet (with lotus petal and floral decoration)
Date: 14th - 15th century
Medium: Stoneware with underglazed blue decoration



Title: Guanyin and the Filial Parrot
Date: 17th century
Primary Maker: Unknown Artist
Medium: Porcelain

Title: "Haarlem Service" Tea Pot
Date: 1932 (design, in production since 1932, these pieces after 1945)
Primary Maker: Ursula Fesca
Medium: Glazed slip-cast earthenware with duotone (black, pale cream yellow) decoration and ebonized cane tea pot handle



Title: Handled Jar
Date: 3000 - 2000 B.C.E.
Medium: Partially glazed earthenware with slip-painted decoration



Title: Head
Date: 1400 - 1200 B.C.E.
Medium: Earthenware with slip-painted decoration

Title: Head
Date: 4500 - 4000 B.C.E.
Medium: Black unglazed terracotta

Title: Head
Date: 4500 - 4000 B.C.E.
Medium: Black unglazed terracotta

Title: Head
Date: 4500 - 4000 B.C.E.
Medium: Black unglazed terracotta

Title: Head
Date: 4500 - 4000 B.C.E.
Medium: Black unglazed terracotta

Title: Head
Date: 4500 - 4000 B.C.E.
Medium: Black terracotta

Title: Head
Date: 4500 - 4000 B.C.E.
Medium: Black unglazed terracotta

Title: Head
Date: 4500 - 4000 B.C.E.
Medium: Black unglazed terracotta

Title: Head

Date: 4500 - 4000 B.C.E.

Medium: Black unglazed terracotta

Title: Head

Date: 4500 - 4000 B.C.E.

Medium: Black unglazed terracotta

Title: Head

Date: 4500 - 4000 B.C.E.

Medium: Black unglazed terracotta

Title: Head

Date: 4500 - 4000 B.C.E.

Medium: Black-grey terracotta

Title: head and upper torso

Date: 4500 - 4000 B.C.E.

Medium: Black terracotta

Title: Head of a Woman

Date: n.d.

Medium: Earthenware



Title: Head of a Woman

Date: 1st century

Medium: Earthenware with cold-painted decoration



Title: Head Vase (Kantharos)

Date: circa 450 B.C.E.

Medium: Earthenware with slip-painted decoration



Title: "Hollstein Service" Coffee Pot

Date: circa 1938

Primary Maker: Villeroy & Boch

Medium: Glazed slip-cast earthenware with partial monochrome (pale blue) decoration



**Title: "Hollstein Service"
Tea Pot**

Date: circa 1938

Primary Maker: Villeroy & Boch

Medium: Glazed slip-cast earthenware with partial monochrome (dark blue) decoration



Title: Holy Water Stoup

Date: 18th century

Primary Maker: Unknown

Artist

Medium: Modeled earthenware with partial glazing and traces of gilding



Title: Honan-Type Bowl

Date: n.d.

Primary Maker: Sakuma

Family

Medium: Glazed earthenware (Mashiko kilns)



Title: Horse and Rider

Date: circa 550 B.C.E.

Medium: Earthenware with slip-painted decoration



Title: Hu jar

Date: circa 1st century B.C.E.

Medium: Unglazed earthenware with incised and applied decoration



Title: Hu (jar with handles)

Date: circa 2500 - 2200 B.C.E.

Medium: Unglazed earthenware with slip-painted decoration



Title: Hu (jug with handles)

Date: circa 2500 - 2200 B.C.E.

Medium: Unglazed earthenware with slip-painted and incised decoration

Title: Hu (vase)

Date: circa 1st century B.C.E.

Medium: Unglazed earthenware (grayware) with incised and applied molded decoration

Title: Hu Vase

Date: 206 B.C.E. - 220

Medium: Stoneware with modeled, incised, combed, and applied decoration with partial natural ash glaze



Title: Hu Vase

Date: circa 2500 - 2200 B.C.E.

Medium: Unglazed earthenware with slip-painted decoration

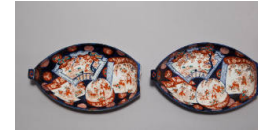


Title: Imari Boat Dish

Date: circa 1800

Primary Maker: Unknown Artist

Medium: Ceramic



Title: Imari Boat Dish

Date: circa 1800

Primary Maker: Unknown Artist

Medium: Ceramic



Title: Imari Creamer

Date: n.d.

Primary Maker: Unknown Artist

Medium: Ceramic



Title: Imari Large Covered Bowl

Date: n.d.

Primary Maker: Unknown Artist

Medium: Porcelain



Title: Imari Noodle Cup

Date: 19th century

Primary Maker: Unknown Artist

Medium: Ceramic



Title: Imari Noodle Cup

Date: 19th century

Primary Maker: Unknown Artist

Medium: Ceramic



Title: Imari Noodle Cup

Date: n.d.

Primary Maker: Unknown Artist

Medium: Ceramic



Title: Imari Noodle Cup

Date: n.d.

Primary Maker: Unknown Artist

Medium: Ceramic



Title: Imari Plate
Date: n.d.
Primary Maker: Unknown
Artist
Medium: Ceramic



Title: Imari Plate
Date: n.d.
Primary Maker: Unknown
Artist
Medium: Ceramic



Title: Imari Plate
Date: n.d.
Primary Maker: Unknown
Artist
Medium: Ceramic



Title: Imari Plate
Date: n.d.
Primary Maker: Unknown
Artist
Medium: Ceramic



Title: Imari Plate
Date: n.d.
Primary Maker: Unknown
Artist
Medium: Ceramic



Title: Imari Plate
Date: n.d.
Primary Maker: Unknown
Artist
Medium: Porcelain



Title: Imari Plate
Date: n.d.
Primary Maker: Unknown
Artist
Medium: Porcelain



Title: Imari Plate
Date: n.d.
Primary Maker: Unknown
Artist
Medium: Ceramic



Title: Imari Plate
Date: n.d.
Primary Maker: Unknown
Artist
Medium: Ceramic



Title: Imari Plate
Date: n.d.
Primary Maker: Unknown
Artist
Medium: Ceramic



Title: Imari Rectangular Dish
Date: circa 1800
Primary Maker: Unknown
Artist
Medium: Ceramic



Title: Imari Rectangular Dish
Date: circa 1800
Primary Maker: Unknown
Artist
Medium: Ceramic



Title: Imari Sugar Bowl with Lid
Date: n.d.
Primary Maker: Unknown
Artist
Medium: Ceramic



Title: Imari Teapot
Date: n.d.
Primary Maker: Unknown
Artist
Medium: Ceramic

Title: Incense Box in the Shape of Crane
Date: late 19th - early 20th century
Medium: Unglazed modeled earthenware (Bizen ware)



Title: Incense Burner
Date: late 16th to early 17th century
Primary Maker: Unknown
Artist
Medium: Glazed porcelain



Title: Inkstand and Tray
Date: circa 1850?
Primary Maker: Mason Factory
Medium: Ironstone, with imari decoration



Title: Irregular-Shaped Bowl
Date: 1883 - 1959
Primary Maker: Rosanjin, Kitaji
Medium: Glazed earthenware with Beni Shino glaze decoration (Mashiko ...)



Title: Irregular-Shaped Bowl
Date: 1883 - 1959
Primary Maker: Rosanjin, Kitaji
Medium: Glazed earthenware with Beni Shino decoration (Mashiko kilns)



Title: Jacqueline's Profile
Date: 1956
Primary Maker: Pablo Picasso
Medium: Molded glazed earthenware



Title: Jar
Date: circa 1500 - 1000 B.C.E.
Medium: Unglazed burnished earthenware with incised, stamped and cord-impressed decoration

Title: Jar
Date: 206 B.C.E. - 220 C.E.
Medium: Glazed (green) earthenware

Title: Jar
Date: probably 7th century
Medium: Glazed (white) earthenware



Title: Jar
Date: late 19th - early 20th century
Medium: Porcelain with underglaze decoration in blue and white



Title: Jar
Date: 7th century
Medium: Stoneware with partial natural ash glaze decoration (sue ware)



Title: Jar
Date: circa 3rd - 5th century
Primary Maker: Unknown Artist
Medium: Stoneware

Title: Jardinière
Date: 15th century
Primary Maker: Unknown Artist
Medium: Stoneware with celadon glaze



Title: Jar with Auspicious Chinese Characters

Date: 17th - 18th century

Primary Maker: Unknown Artist

Medium: Glazed porcelain with underglaze brown iron-oxide painted decoration

Title: Jar with Floral Designs

Date: 19th century

Primary Maker: Unknown Artist

Medium: Glazed porcelain with underglaze cobalt blue painted decoration



Title: Jar with Floral Designs

Date: 19th century

Primary Maker: Unknown Artist

Medium: Glazed porcelain with underglaze cobalt blue painted decoration

Title: Jar with Grass and Butterfly Designs

Date: circa 18th - early 19th century

Primary Maker: Unknown Artist

Medium: Glazed porcelain with underglaze cobalt blue painted decoration

Title: Jug

Date: 1960s

Primary Maker: Francis Sho Hiakatsu

Medium: Glazed ceramic



Title: Jug

Date: n.d.

Medium: Earthenware



Title: Jug

Date: n.d.

Medium: Earthenware with modeled and slip-painted decoration

Title: Jug

Date: n.d.

Primary Maker: Janice Tchalenko

Medium: Glazed stoneware



Title: Jug

Date: circa 50 - 250

Medium: Clay with polished red surface

Title: Juglet

Date: n.d.

Medium: Pottery



Title: Kabiric Pyxis

Fragement: Odysseus's Men Before Circe, Two Combatants

Date: circa 430 - 420 B.C.E.

Primary Maker: Kabiros Painter

Medium: Earthenware with slip-painted and incised decoration



Title: Kantharos

Date: 4th century B.C.E.

Medium: Earthenware with uniform slip-painted decoration



Title: Karatsu-Type Bowl

Date: n.d.

Medium: Glazed earthenware

Title: Kotyle or Krater Fragment

Date: circa early 8th century B. C.E.

Medium: Pink-buff clay with black stripes

Title: Krater Fragment: Hercules

Date: circa 1 - 15

Medium: Slip-glazed earthenware with molded and stamped decoration

Title: Lamp

Date: circa second half of 6th century B.C.E.

Medium: Wheel-made and modeled earthenware with slip-painted decoration

Title: Lamp

Date: circa late 6th or late 5th century B.C.E.

Medium: Wheel-made and modeled earthenware with slip-painted decoration

Title: Lamp

Date: mid- 1st - 2nd century

Medium: Terracotta with remains of brown varnish

Title: Lamp

Date: mid- 1st - 2nd century

Medium: Terracotta with
remains of brown varnish

Title: Lamp

Date: mid- 3rd - 4th century

Medium: Pink-buff terracotta,
unglazed

Title: Lamp

Date: late 3rd - 4th century

Medium: Pink-buff terracotta
with remains of brown varnish

Title: Lamp

Date: late 3rd century B.C.E.

Medium: Pink-buff terracotta
with brown varnish

Title: Lamp

Date: mid- 1st - 2nd century

Medium: Pink-buff terracotta
with remains of varnish

Title: Lamp

Date: mid- 1st - 2nd century

Medium: Brown-buff terracotta
with brown varnish remains

Title: Lamp

Date: late 1st century B.C.E. -
mid 1st century C.E.

Medium: Brown-buff terracotta
and brown varnish

Title: Lamp

Date: mid- 1st - 2nd century

Medium: Brown-buff terracotta
and brown varnish

Title: Lamp

Date: late 1st century B.C.E. -
mid 1st century C.E.

Medium: Brown-buff terracotta
with brown varnish

Title: Lamp

Date: mid- 1st - 2nd century

Medium: Pink-buff terracotta
with remains of brown varnish

Title: Lamp

Date: late 3rd - 2nd century B.
C.E.

Medium: Brown-buff terracotta
with remains of red varnish

Title: Lamp

Date: n.d.

Medium: Molded earthenware
with cold-painted (?) decoration

Title: Lamp

Date: circa 5th century B.C.E.

Medium: Earthenware with
slip-painted decoration

Title: Lamp

Date: late 10th century
(Byzantine) or 13th century
Medium: Glazed earthenware

Title: Lamp

Date: 5th - 6th century
Medium: Pink-buff terracotta
with brown slip

Title: Lamp

Date: circa mid- 1st century B.
C.E.

Medium: Wheel made and
molded slip-painted
earthenware

Title: Lamp

Date: 5th - 6th century
Medium: Terracotta; worn
surface with brown slip

Title: Lamp

Date: circa 5th/6th century
Medium: Earthenware with
incised decoration

Title: Lamp

Date: circa 5th century B.C.E.

Medium: Earthenware with slip-painted decoration



Title: Lamp: Europa and the Bull

Date: circa 1st or 2nd century

Medium: Molded earthenware

Title: Lamp Filler (?)

Date: circa 5th century B.C.E.

Medium: Earthenware with slip-painted decoration

Title: Lamp Fragment

Date: 4th - 3rd century B.C.E.

Medium: Wheel-made earthenware

Title: Lamp Fragment (Bottom and Side Wall)

Date: 1st - 2nd century

Medium: Slip-painted earthenware with incised decoration

Title: Lamp Fragment (Reservoir Wall)

Date: circa 500 - 450 B.C.E.

Medium: Slip-painted wheel-made earthenware

Title: Lamp Fragment: Rim and Volute Nozzle

Date: n.d.

Medium: Slip-painted molded earthenware

Title: Lamp Fragment (Section of Upper Discus and Handle)

Date: n.d.

Medium: Slip-painted molded earthenware

Title: Lamp Fragment (Section of Upper Discus): Two Cupids Playing, One Cupid on the Lion's Back

Date: n.d.

Medium: Slip-painted molded earthenware

**Title: Lamp Fragment:
Side Wall**

Date: n.d.

Medium: Slip-painted
earthenware

**Title: Lamp Fragment:
Side Wall**

Date: n.d.

Medium: Slip-painted
earthenware

**Title: Lamp Fragment:
Side Wall and Base**

Date: n.d.

Medium: Earthenware with
slip-painted decoration

**Title: Lamp Fragments:
Nine Spouts**

Date: n.d.

Medium: Earthenware

**Title: Lamp Fragment
(Upper Discus): Dead or
Sleeping Male Nude**

Date: circa 25 - 75

Medium: Slip-glazed
earthenware with molded
decoration

Title: Lamp Mold

Date: circa second half 6th
century B.C.E.

Medium: Wheel-made and
modeled earthenware

**Title: Lamp: Venus and
Cupid**

Date: circa 1st or 2nd century

Medium: Molded earthenware

**Title: Lamp with Eros
Figure on Discus**

Date: mid- 1st - 2nd century

Primary Maker: Unknown
Artist

Medium: Brown-buff terracotta
with remains of brown varnish



Title: Large Bowl

Date: 1963 - 64

Primary Maker: Erik Pløen
Medium: Glazed stoneware
with incised decoration



Title: Large Bowl
Date: 1900 - 1976
Primary Maker: Sakuma Totaro the Elder
Medium: Glazed earthenware (Mashiko kilns)



Title: Large Bowl
Date: n.d.
Primary Maker: Henry Pim
Medium: Glazed stoneware



Title: Large Dish
Date: circa 1610 - 1620
Primary Maker: Unknown Artist
Medium: Porcelain with cobalt blue underglaze

Title: Large Jug
Date: circa 1820
Primary Maker: Unknown Artist
Medium: Lustreware, copper lustre, yellow bands



Title: Large Plate
Date: circa 1968
Primary Maker: Ruth Duckworth
Medium: Glazed stoneware



Title: Large Platter
Date: n.d.
Primary Maker: Janice Tchalenko
Medium: Glazed stoneware



Title: Leaf Platter
Date: n.d.
Primary Maker: Janice Tchalenko
Medium: Modeled and molded glazed earthenware



Title: Libation Cup
Date: early 17th century
Primary Maker: Unknown Artist
Medium: Glazed porcelain with molded design



Title: Lidded Dish
Date: n.d.
Primary Maker: Angus Suttie
Medium: Glazed earthenware



Title: Lidded Sugar Bowl

Date: 1937 (design, in production 1939 - circa 1959)
Primary Maker: Russel Wright
Medium: Cast glazed earthenware (pinkish tan)

Title: Lid Fragment

Date: n.d.
Medium: Pottery, painted in red geometric design



Title: Liding Tripod

Date: late 2nd or early 1st millennium B.C.E.
Medium: Burnished black earthenware



Title: Lid of Pyxis (so-called Lebes Gamikos)

Date: 420 - 400 B.C.E.
Medium: Earthenware with slip-painted decoration



Title: Li (tripod cooking vessel)

Date: circa 1000 B.C.E.
Medium: Unglazed earthenware with beaten cord-pattern decoration



Title: Long-necked Spouted Ewer

Date: circa 2000 B.C.E. - 1 B.C.E.
Medium: Unglazed earthenware



Title: Low Candlestick

Date: 1963 - 64
Primary Maker: Erik Pløen
Medium: Glazed stoneware

Title: Low Candlestick

Date: 1963 - 64
Primary Maker: Erik Pløen
Medium: Glazed stoneware

Title: lower torso- female

Date: 4500 - 4000 B.C.E.
Medium: Black toned unglazed terracotta

Title: Low Fluted Bowl

Date: 1928

Primary Maker: Lorinda Epply

Medium: Glazed porcelain

Title: Lugged Jar

Date: circa 1950

Primary Maker: Shoji Hamada

Medium: Glazed stoneware with paddle and persimmon red (kaki) and green (copper oxide) glaze decoration



Title: Madonna and Child

Date: n.d.

Primary Maker: Guido Gamboni

Medium: Glazed ceramic

Title: Man with Tambourine

Date: early 20th century

Medium: Glazed polychrome ceramic



Title: Maquette for "Earth, Water, Sky"

Date: 1968 - 1969

Primary Maker: Ruth Duckworth

Medium: Glazed stoneware and wood

Title: Marcolini Potpourri Dish

Date: n.d.

Title: Mask Jug

Date: circa 1765

Primary Maker: Royal Worcester Porcelain factory

Medium: Soft-paste porcelain, underglaze



Title: Meiping Vase

Date: 16th century

Primary Maker: Unknown Artist

Medium: Porcelain with cobalt blue overglaze and white details

Title: Milk Jug and Lid

Date: circa 1770

Primary Maker: Royal Worcester Porcelain factory

Medium: Porcelain in underglaze blue decoration

Title: Milk Jug and Lid
Date: n.d.
Primary Maker: Walter Keeler
Medium: Salt glaze earthenware

Title: Milk Jug and Lid
Date: 1761 - 1763
Primary Maker: Gotowski Factory
Medium: Partially glazed porcelain

Title: Miniature bowls and cups
Date: most of late 6th or 5th century, B.C.E.

Title: Miniature Jar
Date: late 15th - early 16th century
Primary Maker: Unknown Artist
Medium: Glazed porcelainous stoneware with underglaze-blue decoration

Title: Miniature Jar
Date: late 15th - early 16th century
Primary Maker: Unknown Artist
Medium: Glazed porcelainous stoneware with underglaze-blue decoration

Title: Miniature Jar
Date: late 15th - early 16th century
Primary Maker: Unknown Artist
Medium: Glazed porcelainous stoneware with underglaze-blue decoration

Title: Miniature Jar
Date: late 15th - early 16th century
Primary Maker: Unknown Artist
Medium: Glazed porcelainous stoneware with underglaze-blue decoration

Title: Miniature Jar
Date: late 15th - early 16th century
Primary Maker: Unknown Artist
Medium: Glazed porcelainous stoneware with underglaze-blue decoration



Title: Mirror Plaque [so-called Tushingham Plaqu]
Date: 5th - 8th century
Medium: Unglazed molded earthenware with cold-paint decoration



Title: Mural Relief: Nike Sacrificing a Bull
Date: 1st - 2nd century
Medium: Slip-painted molded and modeled earthenware



Title: Mural Relief: Youth in Phrygian Hat Feeding a Griffin
Date: early 2nd century
Medium: Slip-painted molded earthenware

Title: Mushroom Vender
Date: 19th century
Primary Maker: Nymphenburg Porcelain Factory
Medium: Porcelain figure



Title: Neck-Amphora
Date: circa late 7th century B. C.E.
Medium: Earthenware with slip-painted decoration

Title: Neck of Large Vessel Fragment: Duck, Roses
Date: 7th - 6th century B.C.E.
Medium: Corinthian fabric with black figures



Title: North America
Date: circa 1900 - 1905
Primary Maker: Erich Hoesel
Medium: Hard paste porcelain with underglaze and overglaze enamel decoration



Title: Octagonal Dessert Plate in the Gothic Revival Manner
Date: circa 1849
Primary Maker: Augustus Welby Northmore Pugin
Medium: Glazed stoneware with molded relief and underglaze painted and overglaze gilded decoration



Title: Octopus vase
Date: n.d.
Primary Maker: Unknown Artist
Medium: Plaster



Title: Oil Bottle
Date: 12th - 13th century
Primary Maker: Unknown Artist
Medium: Stoneware with green (celadon) glaze decoration



Title: Oil Feeder (Guttus)

Date: circa 325 - 275 B.C.E.

Primary Maker: Unknown

Artist

Medium: Molded and modeled earthenware with applied, incised, and black slip-painted decoration

Title: Oil Lamp

Date: 1st century

Medium: Terracotta

Title: Oil Lamp

Date: 4th - 5th century

Medium: Terracotta, with cross handle



Title: Oil Lamp

Date: 5th century

Medium: Terracotta, the cross handle

Title: Oil Lamp

Date: 5th century

Medium: Terracotta

Title: Oil Lamp

Date: 4th century

Medium: Terracotta

Title: Oil Lamp

Date: 5th - 6th century

Medium: Terracotta

Title: Oil Lamp

Date: 5th - 6th century

Medium: Terracotta

Title: Oil Lamp

Date: 5th - 6th century

Medium: Terracotta



Title: Oil Lamp
Date: 5th - 6th century
Medium: Terracotta



Title: Oil Lamp
Date: 5th - 6th century
Medium: Terracotta

Title: Oil Lamp
Date: 5th - 6th century
Medium: Terracotta

Title: Oil Lamp
Date: 5th - 6th century
Medium: Terracotta

Title: Oil Lamp
Date: 5th - 6th century
Medium: Terracotta

Title: Oil Lamp
Date: 5th - 6th century
Medium: Terracotta

Title: Oil Lamp
Fragment: Cross Handle
Date: 4th - 5th century
Medium: Terracotta

Title: Oil Lamp
Fragment: Handle
Date: 5th century
Medium: Terracotta



Title: Oribe-Style Tea Bowl
Date: n.d.
Medium: Glazed earthenware



Title: Oribe Water Basin

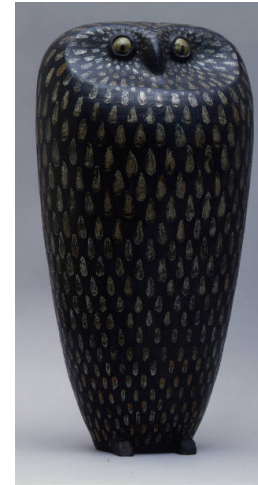
Date: late 19th century

Medium: Stoneware with applied modeled and underglaze iron oxide and green overglaze decoration (Oribe ware)

Title: Ovoid Body Teapot

Date: circa 1810 - 1820

Medium: Platinum resist earthenware



Title: Owl

Date: 1954

Primary Maker: Francois Raty

Medium: Stoneware

Title: Pair of Cup

Saucers

Date: circa 1901 - 1902

Primary Maker: Jutta Sika

Medium: Glazed porcelain with overglaze stencil decoration

Title: Pair of Platters

Date: circa 1756

Primary Maker: Bow

Porcelain Factory

Medium: Porcelain with overglaze enamel and gilt decoration

Title: Pair of Sweet Meat Dishes

Date: circa 1826

Primary Maker: Rockingham Ceramic Factory, England

Medium: Painted and gilt porcelain

Title: Pair of Tiles

Date: 1870 - 1880

Primary Maker: Minton Ceramics Manufactory

Medium: Porcelain with overglaze enamel decoration



Title: Pan (basin)

Date: circa 3000 - 2800 B.C.E.

Medium: Unglazed earthenware with slip-painted decoration



Title: Pan (dish)

Date: 907 - 1125

Medium: Partially slip-painted stoneware with partial sancai lead glaze and stamped decoration

Title: Partial Coffee
Service:
Date: circa 1929
Primary Maker: Eva Stricker
Zeisel
Medium: Glazed slip-cast
earthenware with polychrome
decoration

Title: Partial Coffee
Service: Creamer and
Saucer
Date: circa 1929
Primary Maker: Eva Stricker
Zeisel
Medium: Glazed slip-cast
earthenware with polychrome
decoration

Title: Partial Coffee
Service: Cup and Saucer
Date: circa 1929
Primary Maker: Eva Stricker
Zeisel
Medium: Glazed slip-cast
earthenware with polychrome
decoration

Title: Partial Coffee
Service: Cup and Saucer
Date: circa 1929
Primary Maker: Eva Stricker
Zeisel
Medium: Glazed slip-cast
earthenware with polychrome
decoration

Title: Partial Coffee
Service: Cup and Saucer
Date: circa 1929
Primary Maker: Eva Stricker
Zeisel
Medium: Glazed slip-cast
earthenware with polychrome
decoration

Title: Partial Coffee
Service: Cup and Saucer
Date: circa 1929
Primary Maker: Eva Stricker
Zeisel
Medium: Glazed slip-cast
earthenware with polychrome
decoration

Title: Partial Coffee
Service: Cup and Saucer
Date: circa 1929
Primary Maker: Eva Stricker
Zeisel
Medium: Glazed slip-cast
earthenware with polychrome
decoration

Title: Partial Coffee
Service: Sugar Bowl and
Saucer
Date: circa 1929
Primary Maker: Eva Stricker
Zeisel
Medium: Glazed slip-cast
earthenware with polychrome
decoration

Title: Partial "Haarlem
Service"
Date: 1932 (design, in
production since 1932, these
pieces before 1945)
Primary Maker: Ursula Fesca
Medium: Glazed slip-cast
earthenware with duotone
(black, creamy yellow)
decoration and cane tea pot
handle

Title: Partial "Haarlem Service"

Date: 1932 (design, in production since 1932, these pieces after 1945)
Primary Maker: Ursula Fesca
Medium: Glazed slip-cast earthenware with monochrome (pale blue) decoration and cane tea pot handle

Title: Partial "Haarlem Service"

Date: 1932 (design, in production since 1932, these pieces after 1945)
Primary Maker: Ursula Fesca
Medium: Mat glazed slip-cast earthenware with duotone (black, yellow) decoration and cane tea pot handle

Title: Partial "Haarlem Service": Creamer

Date: 1932 (design, in production since 1932, these pieces after 1945)
Primary Maker: Ursula Fesca
Medium: Glazed slip-cast earthenware with monochrome (pale blue) decoration



Title: Partial "Haarlem Service": Cup and Saucer

Date: 1932 (design, in production since 1932, these pieces before 1945)
Primary Maker: Ursula Fesca
Medium: Glazed slip-cast earthenware with duotone (black, creamy yellow) decoration

Title: Partial "Haarlem Service": Cup and Saucer

Date: 1932 (design, in production since 1932, these pieces after 1945)
Primary Maker: Ursula Fesca
Medium: Glazed slip-cast earthenware with monochrome (pale blue) decoration

Title: Partial "Haarlem Service": Cup and Saucer

Date: 1932 (design, in production since 1932, these pieces after 1945)
Primary Maker: Ursula Fesca
Medium: Glazed slip-cast earthenware with monochrome (pale blue) decoration

Title: Partial "Haarlem Service": Cup and Saucer

Date: 1932 (design, in production since 1932, these pieces after 1945)
Primary Maker: Ursula Fesca
Medium: Glazed slip-cast earthenware with monochrome (pale blue) decoration

Title: Partial "Haarlem Service": Cup and Saucer

Date: 1932 (design, in production since 1932, these pieces after 1945)
Primary Maker: Ursula Fesca
Medium: Glazed slip-cast earthenware with monochrome (pale blue) decoration

Title: Partial "Haarlem Service": Cup and Saucer

Date: 1932 (design, in production since 1932, these pieces after 1945)
Primary Maker: Ursula Fesca
Medium: Glazed slip-cast earthenware with monochrome (pale blue) decoration

Title: Partial "Haarlem Service": Cup and Saucer
Date: 1932 (design, in production since 1932, these pieces after 1945)
Primary Maker: Ursula Fesca
Medium: Glazed slip-cast earthenware with monochrome (pale blue) decoration

Title: Partial "Haarlem Service": Plate
Date: 1932 (design, in production since 1932, these pieces before 1945)
Primary Maker: Ursula Fesca
Medium: Glazed slip-cast earthenware with duotone (black, creamy yellow) decoration

Title: Partial "Haarlem Service": Plate
Date: 1932 (design, in production since 1932, these pieces after 1945)
Primary Maker: Ursula Fesca
Medium: Glazed slip-cast earthenware with monochrome (pale blue) decoration

Title: Partial "Haarlem Service": Plate
Date: 1932 (design, in production since 1932, these pieces after 1945)
Primary Maker: Ursula Fesca
Medium: Glazed slip-cast earthenware with monochrome (pale blue) decoration

Title: Partial "Haarlem Service": Plate
Date: 1932 (design, in production since 1932, these pieces after 1945)
Primary Maker: Ursula Fesca
Medium: Glazed slip-cast earthenware with monochrome (pale blue) decoration

Title: Partial "Haarlem Service": Plate
Date: 1932 (design, in production since 1932, these pieces after 1945)
Primary Maker: Ursula Fesca
Medium: Glazed slip-cast earthenware with monochrome (pale blue) decoration

Title: Partial "Haarlem Service": Plate
Date: 1932 (design, in production since 1932, these pieces after 1945)
Primary Maker: Ursula Fesca
Medium: Glazed slip-cast earthenware with monochrome (pale blue) decoration

Title: Partial "Haarlem Service": Plate
Date: 1932 (design, in production since 1932, these pieces after 1945)
Primary Maker: Ursula Fesca
Medium: Glazed slip-cast earthenware with monochrome (pale blue) decoration

Title: Partial "Haarlem Service": Plate
Date: 1932 (design, in production since 1932, these pieces after 1945)
Primary Maker: Ursula Fesca
Medium: Mat glazed slip-cast earthenware with duotone (black, yellow) decoration

Title: Partial "Haarlem Service": Plate
Date: 1932 (design, in production since 1932, these pieces after 1945)
Primary Maker: Ursula Fesca
Medium: Mat glazed slip-cast earthenware with duotone (black, yellow) decoration

Title: Partial "Haarlem Service": Plate
Date: 1932 (design, in production since 1932, these pieces after 1945)
Primary Maker: Ursula Fesca
Medium: Mat glazed slip-cast earthenware with duotone (black, yellow) decoration

Title: Partial "Haarlem Service": Plate
Date: 1932 (design, in production since 1932, these pieces after 1945)
Primary Maker: Ursula Fesca
Medium: Mat glazed slip-cast earthenware with duotone (black, yellow) decoration

Title: Partial "Haarlem Service": Plate
Date: 1932 (design, in production since 1932, these pieces after 1945)
Primary Maker: Ursula Fesca
Medium: Mat glazed slip-cast earthenware with duotone (black, yellow) decoration

Title: Partial "Haarlem Service": Plate
Date: 1932 (design, in production since 1932, these pieces after 1945)
Primary Maker: Ursula Fesca
Medium: Mat glazed slip-cast earthenware with duotone (black, yellow) decoration

Title: Partial "Haarlem Service": Sugar Bowl with Lid
Date: 1932 (design, in production since 1932, these pieces before 1945)
Primary Maker: Ursula Fesca
Medium: Glazed slip-cast earthenware with duotone (black, creamy yellow) decoration

Title: Partial "Haarlem Service": Sugar Bowl with Lid
Date: 1932 (design, in production since 1932, these pieces after 1945)
Primary Maker: Ursula Fesca
Medium: Glazed slip-cast earthenware with monochrome (pale blue) decoration

Title: Partial "Haarlem Service": Tea Pot
Date: 1932 (design, in production since 1932, these pieces after 1945)
Primary Maker: Ursula Fesca
Medium: Mat glazed slip-cast earthenware with duotone (black, yellow) decoration and cane tea pot handle

Title: Partial "Haarlem Service": Tea Pot with Lid
Date: 1932 (design, in production since 1932, these pieces before 1945)
Primary Maker: Ursula Fesca
Medium: Glazed slip-cast earthenware with duotone (black, creamy yellow) decoration and cane tea pot handle

Title: Partial "Haarlem Service": Tea Pot with Lid

Date: 1932 (design, in production since 1932, these pieces after 1945)
Primary Maker: Ursula Fesca
Medium: Glazed slip-cast earthenware with monochrome (pale blue) decoration and cane tea pot handle

Title: Partial Tea Service

Date: circa 1930s
Primary Maker: Nymphenburg Porcelain Factory
Medium: Porcelain (white, pale yellow)

Title: Partial Tea Service: Creamer with Lid

Date: circa 1930s
Primary Maker: Nymphenburg Porcelain Factory
Medium: Porcelain (white, pale yellow)

Title: Partial Tea Service: Cup and Saucer

Date: circa 1930s
Primary Maker: Nymphenburg Porcelain Factory
Medium: Porcelain (white, pale yellow)

Title: Partial Tea Service: Cup and Saucer

Date: circa 1930s
Primary Maker: Nymphenburg Porcelain Factory
Medium: Porcelain (white, pale yellow)

Title: Partial Tea Service: Plate

Date: circa 1930s
Primary Maker: Nymphenburg Porcelain Factory
Medium: Porcelain (white, pale yellow)

Title: Partial Tea Service: Plate

Date: circa 1930s
Primary Maker: Nymphenburg Porcelain Factory
Medium: Porcelain (white, pale yellow)

Title: Partial Tea Service: Stand

Date: circa 1930s
Primary Maker: Nymphenburg Porcelain Factory
Medium: Porcelain (white, pale yellow)

Title: Partial Tea Service: Sugar Bowl with Lid

Date: circa 1930s
Primary Maker: Nymphenburg Porcelain Factory
Medium: Porcelain (white, pale yellow)

**Title: Partial Tea Set:
Tea Pot, Milk Jug, Tea
Caddy**

Date: 1761 - 1763

Primary Maker: Gotowski
Factory

Medium: Partially glazed
porcelain



Title: Pedestalled Jar

Date: 5th century - 6th century

Primary Maker: Unknown

Artist

Medium: Unglazed stoneware
with impressed and combed
decoration and natural ash
glaze deposits



Title: Pedestalled Jar

Date: 5th - 6th century

Primary Maker: Unknown

Artist

Medium: Unglazed stoneware
with impressed decoration and
natural ash glaze deposits

Title: Pierced Bowl

Date: n.d.

Primary Maker: Maria Stewart

Medium: Glazed porcelain



Title: Pig

Date: n.d.

Medium: Mold-made
earthenware with green glaze



Title: Pigeon

Date: 5th century B.C.E.

Medium: Slip-painted
earthenware



Title: Pilgrim Flask

Date: n.d.

Primary Maker: Unknown
Artist

Medium: Stoneware with
partial natural ash glaze
decoration (sue ware)



**Title: Pink Shino-Style
Tea Bowl**

Date: n.d.

Medium: Glazed earthenware



Title: Pitcher

Date: circa 1928

Primary Maker:
Steingutfabriken Velten-
Vordamm, Berlin, Germany
Medium: Glazed earthenware
with polychrome decoration



Title: Pitcher

Date: late 18th century

Medium: Ceramic, green, gold and cream

Title: Pitcher

Date: circa 1810 - 1820

Medium: Copper luster earthenware with orange transfer decoration



Title: Pitcher

Date: 1937 (design, in production 1939 - circa 1959)

Primary Maker: Russel Wright
Medium: Cast glazed earthenware



Title: Pitcher

Date: 1962 - 63

Primary Maker: Hiroaki Morino

Medium: Hand-thrown and shaped glazed stoneware

Title: Pitcher with Trefoil Lip

Date: 1899

Primary Maker: Rookwood Pottery, Cincinnati, Ohio

Medium: Glazed earthenware with underglaze slip-painted decoration over atomized slip ground (Rookwood Standard)



Title: Pitcher with Trefoil Lip and Strap Handle: Bull

Date: 12th century

Medium: Glazed slip-painted earthenware with sgraffito (incised) decoration



Title: Plain White VI Jug

Date: circa 475 - 370 B.C.E.

Medium: Earthenware (light clay) with white painted decoration

Title: Plain White VI Jug

Date: circa 475 - 370 B.C.E.

Medium: Earthenware (light buff) with white painted decoration



Title: Plain White VI Jug

Date: 475 - 370 B.C.E.

Medium: Earthenware (red) with light slip

Title: Plate

Date: circa 1930 - 1935

Primary Maker: Karlsruhe
Maiolica Factory

Medium: Earthenware with
slip-painted decoration

Title: Plate

Date: circa 1930 - 1935

Primary Maker: Karlsruhe
Maiolica Factory

Medium: Earthenware with
slip-painted decoration

Title: Plate

Date: circa 1930 - 1935

Primary Maker: Karlsruhe
Maiolica Factory

Medium: Earthenware with
slip-painted decoration

Title: Plate

Date: circa 1930

Primary Maker: HB-
Werkstätten für Keramik

Medium: Glazed earthenware
with polychrome decoration

Title: Plate

Date: 1929 (design, in
production 1929 - 1962?)

Primary Maker: Otto Lindig

Medium: Glazed slip-cast
earthenware

Title: Plate

Date: 1929 (design, in
production 1929 - 1962?)

Primary Maker: Otto Lindig

Medium: Glazed slip-cast
earthenware

Title: Plate

Date: 1929 (design, in
production 1929 - 1962?)

Primary Maker: Otto Lindig

Medium: Glazed slip-cast
earthenware

Title: Plate

Date: 1929 (design, in
production 1929 - 1962?)

Primary Maker: Otto Lindig

Medium: Glazed slip-cast
earthenware



Title: Plate

Date: circa 1950

Primary Maker: Edwin Scheier

Medium: Glazed stoneware
with underglaze slip-painted
decoration



Title: Plate
Date: circa 1960
Primary Maker: Jean Lurçat
Medium: Glazed earthenware



Title: Plate
Date: circa 1960
Primary Maker: Jean Lurçat
Medium: Glazed earthenware

Title: Plate
Date: circa 1790
Primary Maker: Wedgwood
Medium: Creamware with blue and brown painted decoration

Title: Plate
Date: circa 1760 - 1780
Primary Maker: Unknown
Artist
Medium: Tin-glazed earthenware with blue decoration

Title: Plate
Date: circa 1820
Primary Maker: Davenport Porcelain Company
Medium: Earthenware with blue transfer print decoration

Title: Plate
Date: circa 1810 - 1815
Primary Maker: Spode Ceramic Works
Medium: Earthenware with blue transfer decoration



Title: Plate
Date: circa 1810 - 1815
Primary Maker: Königliche Porzellan-Manufaktur
Medium: Hard-paste porcelain with overglaze enamel and gilt decoration

Title: Plate
Date: circa 1880
Primary Maker: M. Grund
Medium: Porcelain with overglaze enamel and gilt

Title: Plate
Date: circa 1760
Primary Maker: John Bristol Bowen
Medium: Blue tin-glazed earthenware (delftware)



Title: Plate
Date: circa 1750
Primary Maker: Unknown
Artist
Medium: Blue tin-glazed earthenware (delftware)

Title: Plate
Date: mid- 18th century
Primary Maker: Unknown
Artist
Medium: Tin-glazed earthenware with polychrome decoration

Title: Plate
Date: circa 1770 - 1775
Medium: Transfer printed porcelain with pine cone pattern



Title: Plate
Date: 1748
Medium: Blue tin-glazed earthenware (delftware)



Title: Plate
Date: circa 1750
Medium: Polychromed delftware

Title: Plate
Date: circa 1760
Medium: Blue tin-glazed earthenware (delftware)

Title: Plate
Date: circa 1760
Medium: Blue tin-glazed earthenware (delftware)

Title: Plate
Date: circa 1960
Primary Maker: Jean Lurçat
Medium: Glazed earthenware

Title: Plate
Date: circa 1928
Primary Maker: Gertrude Gutchinsky
Medium: Glazed earthenware with polychrome decoration

Title: Plate**Date:** circa 1928**Primary Maker:** Gertrude Gutchinsky**Medium:** Glazed earthenware with polychrome decoration

Title: Plate**Date:** circa 1928**Primary Maker:** Gertrude Gutchinsky**Medium:** Glazed earthenware with polychrome decoration

Title: Plate**Date:** n.d.**Medium:** Earthenware with slip-painted decoration**Title: Plate****Date:** circa 1755**Medium:** Powdered manganese and blue tin-glazed earthenware (delftware)

Title: Plate**Date:** circa 1760**Medium:** Polychrome tin-glazed earthenware (delftware)

Title: Plate Fragment**Date:** circa late 4th century B. C.E.**Primary Maker:** Unknown Artist**Medium:** Slip-glazed earthenware with stamped decoration

Title: Plate Fragment:**Base****Date:** n.d.**Medium:** Earthenware

Title: Plate in the Rococo Revival Style**Date:** circa 1835**Primary Maker:** Mason and Sons**Medium:** Glazed Ironstone with overglaze transfer-printed and gilded decoration

Title: Plates**Date:** 1930**Primary Maker:** Wedgwood**Medium:** Porcelain, pink and cream floral decoration

Title: Plate Set

Date: circa 1928

Primary Maker: Gertrude
Gutchinsky

Medium: Glazed earthenware
with polychrome decoration

**Title: Plate with Basket
Weave Border**

Date: 1759 - 1762

Primary Maker: Frankenthal
Porcelain Factory

Medium: Gilt porcelain



**Title: Plate (with relief
design of Diana in a
Quadriga)**

Date: circa 1790 - 1827

Primary Maker: Isleworth
Porcelain Factory

Medium: Glazed molded
earthenware

Title: Platter

Date: 20th century?

Primary Maker: Haviland &
Co.

Medium: Porcelain

Title: Platter

Date: n.d.

Primary Maker: Janice
Tchalenko

Medium: Glazed stoneware



Title: Platter

Date: n.d.

Primary Maker: David Garland

Medium: Glazed earthenware

Title: Platter

Date: circa 1998

Primary Maker: Yoon Kwang-
Cho (, Yun Gwang-Jo)

Medium: Glazed stoneware
with incised decoration in
brushed slip (buncheong ware)

Title: Posset Pot

Date: circa 1680 - 1700

Medium: Polychrome (blue,
black and turquoise) tin-glazed
earthenware (delftware)



Title: Pot

Date: 11th - 13th century

Primary Maker: Unknown
Artist

Medium: Glazed (brown)
stoneware with incised
decoration



Title: Punch Bowl
Date: 1925 - 1926
Primary Maker: Theodor Bogler
Medium: Glazed earthenware

Title: Puzzle Jug
Date: circa 1750
Medium: Blue and white delftware



Title: Pygmalion and Galatea (after Etienne-Maurice Falconet)
Date: 1764 - 1973
Primary Maker: Sèvres Porcelain Manufactory
Medium: Sèvres bisquit porcelain, hard paste



Title: Pyxis (so-called Lebes Gamikos)
Date: 420 - 400 B.C.E.
Medium: Earthenware with slip-painted decoration



Title: Ram-Shaped Vessel
Date: second - third quarter of 5th century B.C.E.
Medium: Earthenware with cold-painted decoration

Title: Rectangular Platter
Date: circa 1835?
Primary Maker: Mason Factory
Medium: Ironstone, hand-painted



Title: Red-Figure Alabastron: Two Running Warriors Carrying Peltas
Date: circa 510 - 500 B.C.E.
Primary Maker: Painter of Berlin 2268
Medium: Earthenware with slip-painted decoration



Title: Red-Figure Bell-Krater Fragment: Two Youths (Perhaps Orestes and Pylades at the Altar in Taurus)
Date: circa 435 - 425 B.C.E.
Primary Maker: Peleus Painter
Medium: Earthenware with slip-painted decoration



Title: Red-Figure Cup
Date: circa second quarter of 4th century B.C.E.
Medium: Earthenware with slip-painted decoration

**Title: Red-Figure
Fragment from a Large
Vase: Part of a Woman**
Date: circa 430 B.C.E.
Primary Maker: Kleophon
Painter
Medium: Earthenware with
slip-painted decoration

**Title: Red Figure
Fragment: Head and
Shoulder of a Woman**
Date: circa 450 B.C.E.
Primary Maker: Niobid Painter
Medium: Earthenware with
slip-painted decoration

**Title: Red-Figure
Fragment of Attic Cup-
Calyx (helmeted soldier
holding shield)**
Date: circa mid- 5th century B.
C.E.
Medium: Slip-painted
earthenware

**Title: Red Figure Hydra
Neck Fragment**
Date: n.d.
Primary Maker: Girgenti
Painter
Medium: Earthenware with
slip-painted decoration

**Title: Red Figure Kalix
Krater Fragment**
Date: 450 - 420 B.C.E.
Primary Maker: Achilles
Painter
Medium: Earthenware with
slip-painted decoration

**Title: Red Figure Kylix
Fragment**
Date: circa mid- 5th century B.
C.E.
Medium: Earthenware with
slip-painted decoration

**Title: Red-Figure Kylix
Fragment**
Date: n.d.
Medium: Earthenware with
slip-painted decoration

**Title: Red-Figure Kylix
Fragment**
Date: 4th century B.C.E.
Medium: Earthenware with
slip-painted decoration



**Title: Red-Figure Kylix
Fragment: A Komos
(Party Scene)**
Date: circa 515 - 510 B.C.E.
Medium: Earthenware with
slip-painted decoration

Title: Red-Figure Kylix
Fragment: Draped Seated Male Figure with a Walking Stick (inside), Part of a Figure with a Walking Stick (outside)
Date: second quarter of 5th century B.C.E.
Medium: Earthenware with slip-painted decoration

Title: Red Figure Kylix
Fragment from a Lekanis (?): Warrior with a Thracian Helmet
Date: circa 464 - 460 B.C.E.
Primary Maker: Niobid Painter
Medium: Earthenware with slip-painted decoration



Title: Red Figure Kylix
Fragments
Date: n.d.
Medium: Earthenware with slip-painted decoration

Title: Red-Figure Kylix
Fragments
Date: n.d.
Medium: Earthenware with slip-painted decoration

Title: Red-Figure Kylix
Fragments
Date: 5th century B.C.E.
Medium: Earthenware with slip-painted decoration

Title: Red-Figure Kylix
Fragments: Part of Head and Shoulder of a Youth in Conversation (a), Part of a Draped Figure with Walking Stick (b)
Date: circa second quarter of 5th century B.C.E.
Primary Maker: Angular Painter
Medium: Earthenware with slip-painted decoration



Title: Red-Figure Kylix:
Seated Woman Juggling Balls with Flying Eros Figure
Date: circa 440 - 420 B.C.E.
Medium: Earthenware with slip-painted decoration

Title: Red Figure Kylix
Sherd
Date: n.d.
Primary Maker: Penthesilea Painter
Medium: Earthenware with slip-painted decoration

Title: Red-Figure Kylix
Sherd
Date: n.d.
Medium: Earthenware with slip-painted decoration



Title: Red-Figure Kylix:
**Standing Youth Holding
a Walking Stick and Bowl**

Date: n.d.

Primary Maker: Antiphon
Painter

Medium: Earthenware with
slip-painted decoration



Title: Red-Figure
**Lekanis Lid Fragment:
Woman Sitting on a Rock**

Date: circa 400 - 375 B.C.E.

Primary Maker: Jena Painter

Medium: Earthenware with
slip-painted decoration

Title: Red-Figure
Lekythos: Flying Nike

Date: circa 450 B.C.E.

Medium: Earthenware with
slip-painted decoration



Title: Red-Figure
**Lekythos in Six's
Technique**

Date: n.d.

Medium: Earthenware with
slip-painted and cold-painted
(?) decoration



Title: Red-Figure Neck
**Pelike Fragment:
Ephebe (Youth)**

Date: circa 510 B.C.E.

Primary Maker: Euphronios

Medium: Earthenware with
slip-painted decoration

Title: Red-Figure Nolan
Amphora

Date: late 5th century B.C.E.

Medium: Earthenware with
slip-painted decoration



Title: Red-Figure Pelike

Date: n.d.

Medium: Earthenware with slip-painted decoration



Title: Red-Figure Pelike

Date: 460 B.C.E.

Medium: Earthenware with slip-painted decoration

Title: Red-Figure Pot Sherd

Date: circa 350 B.C.E.

Medium: Earthenware with slip-painted and cold-painted decoration, white paint

Title: Red-Figure Pottery Fragment

Date: circa mid- 5th century B. C.E.

Primary Maker: Euaion Painter

Medium: Earthenware with slip-painted decoration

Title: Red Figure Skyphos Fragment

Date: n.d.

Medium: Earthenware with slip-painted decoration

Title: Red Figure Skyphos Rim Fragment: Head and Shoulder of a Woman

Date: circa 450 B.C.E.

Primary Maker: Douris

Medium: Earthenware with slip-painted decoration



Title: Red-Figure Skyphos: Running (?) Youth (Side A), Deer (?) (Side B)

Date: circa 4th century B.C.E.

Medium: Earthenware with slip-painted decoration



Title: Red Figure Two Banded Calyx-Krater Fragment: Battle of Kaineus and Centaur (upper register), Departure of a Youth (lower registrar)

Date: circa 440 - 430 B.C.E.

Primary Maker: Polygnotos

Medium: Earthenware with slip-painted decoration

Title: Red-Figure Vase Fragment

Date: mid- 5th century B.C.E.

Primary Maker: Pan Painter

Medium: Earthenware with slip-painted decoration

**Title: Red-Figure Vase
Fragment**

Date: n.d.

Medium: Earthenware with
slip-painted decoration

**Title: Red Figure Vessel
Fragment**

Date: second half of 5th
century B.C.E.

Medium: Earthenware with
slip-painted decoration

**Title: Red-Figure Vessel
Fragment**

Date: n.d.

Medium: Earthenware with
slip-painted decoration



**Title: Red Figure Vessel
Fragment (from a kylix?)**

Date: circa 430 B.C.E.

Medium: Earthenware with
slip-painted decoration



Title: Red Polished Bowl

Date: 1950 - 1600 B.C.E.

Medium: Brown clay, red slip

**Title: Red Polished
Coarse Ware Cooking
Dipper**

Date: circa 1875 - 1750 B.C.E.

Medium: Clay brick red,
brownish red slip

**Title: Red Polished
Gourd Jug**

Date: circa 1875 - 1750 B.C.E.

Medium: Brown clay, red slip

**Title: Red Polished
Gourd Juglet**

Date: 1875 - 1700 B.C.E.

Medium: Yellow clay, red slip

**Title: Red Polished
Gourd Juglet**

Date: circa 1950 - 1700 B.C.E.

Medium: Yellow clay, red slip

**Title: Red Polished
Gourd Juglet**

Date: circa 1875 - 1750 B.C.E.

Medium: Brown clay, red slip

Title: Red Polished Jug

Date: 1800 - 1750 B.C.E.?

Medium: Earthenware, slip-painted with applied, incised and punch-hole decoration

**Title: Red Polished
Juglet**

Date: 1800 - 1750 B.C.E.

Medium: Earthenware with slip-painted, incised decoration

**Title: Red Polished
Juglet with Side Spout**

Date: circa 1800 - 1700 B.C.E.

Medium: Pottery

**Title: Rhyton: Griffin
Head**

Date: n.d.

Medium: Earthenware with slip-painted decoration

Title: Rhyton: Satyr Head

Date: possibly 20th century reproduction cast from ancient mold

Medium: Earthenware with slip-painted and cold-painted decoration

**Title: Rim Fragment
from Red Figure Kylix**

Date: n.d.

Medium: Earthenware with slip-painted decoration

**Title: Rim Fragment
from Red Figure Vessel**

Date: n.d.

Medium: Earthenware with slip-painted decoration

**Title: Rimmed Bowl
(Klapmuts)**

Date: first quarter of the 17th century

Primary Maker: Unknown Artist

Medium: Porcelain with cobalt blue underglaze

**Title: Rim of Red Figure
Kylix**

Date: circa 475 - 450

Medium: Earthenware with
slip-painted decoration

**Title: Rim of Red Figure
Kylix**

Date: circa 450 B.C.E.

Medium: Earthenware with
slip-painted decoration



Title: Ring Askos

Date: n.d.

Medium: Slip-painted
earthenware with slip-painted
decoration

Title: Ritual Dish

Date: 19th century

Primary Maker: Unknown
Artist

Medium: Glazed porcelain
(white ware, baekja)



Title: Ritual Pitcher

Date: n.d.

Primary Maker: Unknown
Artist

Medium: Stoneware with
partial natural ash glaze
decoration



Title: Sake Bottle

Date: n.d. (probably circa 1990)

Primary Maker: Yasuhisa
Kohyama

Medium: Shigaraki stoneware



Title: Sake Cup

Date: 1868

Primary Maker: tagaki
Rengetsu

Medium: Hand-built glazed
earthenware with calligraphic
poem incised through glaze

**Title: Sake Cup (with
camellia decoration and
poetic inscription)**

Date: circa 1900

Primary Maker: Ito Tozan

Medium: Glazed porcelain
with overglaze enamel, silver,
and gilt decoration (Awata
ware)



Title: Sauce Boat

Date: 1861 - 1862

Primary Maker: Sèvres
Porcelain Manufactory

Medium: Glazed porcelain
with overglaze gilt decoration

Title: Sauceboat-Shaped Vessel

Date: n.d.

Medium: Earthenware with cold-painted (?) decoration

Title: Sauce Boat Tray in the "Persian" Design

Date: circa 1886

Primary Maker: Christopher Dresser

Medium: Glazed earthenware with hand-enameled painting on transfer-printed and overglaze gilded decoration



Title: Saucer

Date: second half of 18th century

Primary Maker: Ludwigsburg Pottery & Porcelain Factory

Medium: Porcelain

Title: Saucer

Date: circa 1834 - 1854

Primary Maker: William Ridgway & Co.

Medium: Earthenware with marcella transfer pattern

Title: Saucer (with Aesthetic Movement Pattern)

Date: circa 1880 - 1890

Primary Maker: Royal Worcester Porcelain factory

Medium: Glazed earthenware with transfer decoration and hand-applied color

Title: Sculptural Form

Date: n.d.

Primary Maker: Ewen Henderson

Medium: Glazed earthenware

Title: Sculpture

Date: n.d.

Primary Maker: Angus Suttie

Medium: Glazed earthenware

Title: Seated Eros

Date: circa 2nd - 1st century B. C.E.

Medium: Earthenware



Title: Serving Dish

Date: 1900 - 1976

Primary Maker: Sakuma Totaro the Elder

Medium: Ceramic

Title: Serving Dish

Date: 15th - 16th century

Primary Maker: Unknown

Artist

Medium: Glazed porcelainous stoneware with underglaze-blue decoration

Title: Serving Dish

Date: 15th - 16th century

Primary Maker: Unknown

Artist

Medium: Glazed porcelainous stoneware with underglaze-blue decoration



Title: Set of Vases

Date: 1915 - 1920

Primary Maker: B. Bloch & Co., Eichwald

Medium: Glazed slip-cast? earthenware with underglaze enamel decoration

Title: Seventeen Black-Figure Vessel Fragments

Date: n.d.

Medium: Earthenware with slip-painted decoration

Title: Shallow Bowl

Date: n.d.

Primary Maker: Otto Natzler

Medium: Glazed earthenware (orange and black uranium glaze)



Title: Shallow Bowl

Date: 1963 - 64

Primary Maker: Erik Pløen

Medium: Hand-thrown and shaped glazed stoneware

Title: Shallow Squared Bowl

Date: n.d.

Primary Maker: Otto Natzler

Medium: Glazed earthenware (rosy/bluish gray)



Title: Shell-Form Bowl and Platter

Date: circa 1733

Primary Maker: Juste-Aurèle Meissonnier

Medium: Glazed soft-paste porcelain

Title: Shell Lamp

Date: mid- 7th - mid- 6th century B.C.E.

Medium: Terracotta (coarse) with brown slip

Title: Shell Lamp
Fragment: Rim and Nozzle

Date: circa 650 - 550 B.C.E.
Medium: Wheel-made earthenware, hand-pressed to shape after throwing

Title: Shepherdess

Date: n.d.
Primary Maker: Unknown
Artist
Medium: Ceramic with polychrome glaze

Title: Sherd

Date: n.d.
Primary Maker: Unknown
Artist
Medium: Earthenware with slip-painted decoration

Title: Sherd

Date: n.d.
Primary Maker: Unknown
Artist
Medium: Ceramic

Title: Sherd

Date: n.d.
Medium: Buff clay with dark brown glaze

Title: Sherd

Date: n.d.
Medium: Buff clay with brown glaze

Title: Sherd

Date: circa 1100 B.C.E.
Medium: Buff clay, brown paint



Title: Sleeping Cat

Date: circa 1920
Primary Maker: Unknown
Artist
Medium: Porcelain, overglaze enamels (Kutani ware)



Title: Small Bottle

Date: 1962 - 63
Primary Maker: Hiroaki Morino
Medium: Hand-thrown glazed stoneware with incised decoration



Title: Small Bottle

Date: 19th century

Primary Maker: Unknown

Artist

Medium: Glazed porcelain
(white ware, baekja)

Title: Small Bowl

Date: 20th century?

Primary Maker: Haviland &
Co.

Medium: Porcelain



Title: Small Bowl

Date: 1962 - 63

Primary Maker: Hiroaki Morino

Medium: Hand-thrown glazed
stoneware



Title: Small Cup

Date: 1908 - 1971

Primary Maker: Otto Natzler

Medium: Earthenware with
blue-green glaze

Title: Small Dish

Date: 12th - 13th century

Primary Maker: Unknown

Artist

Medium: Stoneware with
bluish-green (celadon) glaze
and incised decoration

Title: Small Dish

Date: 12th - 13th century

Primary Maker: Unknown

Artist

Medium: Stoneware with gray
(celadon) glaze and white clay
inlaid (sanggam) decoration

Title: Small Dish

Date: 12th - 13th century

Primary Maker: Unknown

Artist

Medium: Stoneware with
greenish-gray (celadon) glaze
and white clay inlaid
(sanggam) decoration



Title: Small Jar

Date: 15th - 16th century

Primary Maker: Unknown

Artist

Medium: Glazed porcelainous
stoneware with underglaze-
blue decoration



Title: Small Jug

Date: circa 1820

Primary Maker: Unknown

Artist

Medium: Lustreware, copper
lustre, dark blue band



Title: Small Jug with Handle
Date: 1883
Primary Maker: Martin Rettig
Medium: Glazed stoneware with underglaze slip-painted decoration and overglaze gilded decoration

Title: Small Vessel for Liquids, with Classical Stand
Date: n.d.
Medium: Terracotta

Title: Spindle Whorl
Date: n.d.
Medium: Earthenware

Title: Spindle Whorl
Date: circa early 6th century B. C.E.
Medium: Earthenware with slip-painted decoration



Title: Square Bottle
Date: circa 1950
Primary Maker: Shoji Hamada
Medium: Glazed stoneware with bamboo-sprout pattern

Title: Square Bowl
Date: circa 1960 - 1965
Primary Maker: Kawai Kanjiro
Medium: Glazed Shigaraki-type stoneware with three-color (black, green, red) glaze decoration



Title: Square Bowl
Date: circa 1950
Primary Maker: Shoji Hamada
Medium: Glazed stoneware with slip-painted and overglaze enamel (red, green) decoration



Title: Square Curved Flask
Date: n.d.
Primary Maker: Shinsaku Hamada
Medium: Glazed molded and modeled stoneware



Title: Square Dish
Date: n.d.
Primary Maker: John Maltby
Medium: Glazed earthenware

**Title: Square Plate with
Cut Corners**

Date: 1900 - 1976

Primary Maker: Sakuma
Totaro the Elder

Medium: Glazed earthenware
with bamboo decoration
(Mashiko kilns)

**Title: Statuette
Fragment: Bull or Dog (?)**

Date: circa mid- 5th century B.
C.E.

Medium: Earthenware

**Title: Statuette
Fragment: Eros**

Date: circa 4th century B.C.E.

Medium: Earthenware

**Title: Statuette
Fragment: Head**

Date: circa early 5th century B.
C.E.

Medium: Earthenware with
slip-painted decoration

**Title: Statuette
Fragment: Headless
Standing Draped Female
Holding Pitcher in her
Right Hand**

Date: possibly 6th century B.C.
E.

Medium: Slip-painted molded
earthenware

**Title: Statuette
Fragment: Head of a
Woman**

Date: n.d.

Medium: Earthenware with
cold- or slip-painted decoration

**Title: Statuette
Fragment: Head of a
Woman**

Date: early - mid 5th century B.
C.E.

Medium: Slip-painted
earthenware with cold-painted
decoration



**Title: Statuette
Fragment: Head of a
Woman**

Date: circa early 5th century B.
C.E.

Medium: Slip-painted
earthenware with cold-painted
decoration

**Title: Statuette
Fragment: Head of a
Woman**

Date: circa late 6th century B.
C.E.

Medium: Slip-painted
earthenware with cold-painted
decoration

Title: Statuette

Fragment: Head of a Woman

Date: circa 5th century B.C.E.

Medium: Slip-painted earthenware with cold-painted decoration

Title: Statuette

Fragment: Head (of a Woman?)

Date: circa 5th century B.C.E.

Medium: Earthenware with cold-painted decoration

Title: Statuette

Fragment: Head of a Woman

Date: n.d.

Medium: Slip-painted molded earthenware



Title: Statuette

Fragment: Head of a Woman

Date: circa early 5th century B.C.E.

Medium: Slip-painted earthenware with cold-painted decoration

Title: Statuette

Fragment: Head of a Woman Wearing a Headdress

Date: circa 5th century B.C.E.

Medium: Slip-painted earthenware with cold-painted decoration



Title: Statuette

Fragment: Head of a Woman with Elaborate Coiffure

Date: circa second half of 1st century B.C.E.

Medium: Earthenware



Title: Statuette

Fragment: Head of the Helmeted Promachos Athena

Date: circa 6th century B.C.E.

Medium: Slip-painted earthenware

Title: Statuette

Fragment: Torso and Head of a Woman

Date: after mid 6th century B.C.E.

Medium: Earthenware

Title: Statuette

Fragment: Upper Body and Head of a Woman

Date: circa 5th century B.C.E.

Primary Maker: Unknown Artist

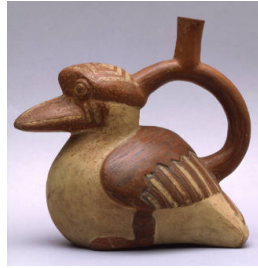
Medium: Earthenware with cold-painted decoration



Title: Stirrup Vessel

Date: 5th - 6th century

Medium: Earthenware with slip-painted decoration



Title: Stirrup Vessel

Date: 5th - 6th century

Medium: Earthenware with slip-painted decoration

Title: St. Menas Ampulla

Date: 5th - 6th century

Medium: Terracotta



Title: St. Menas Ampulla

Date: circa 610 - 640

Medium: Unglazed molded earthenware



Title: Stoneware Tankard

Date: 1709

Primary Maker: C.W. Gun

Medium: Stoneware and pewter

Title: Storage Jar

Date: 15th - 16th century

Primary Maker: Unknown
Artist

Medium: Glazed stoneware (buncheon)



Title: Storage Jar

Date: 5th - 6th century

Primary Maker: Unknown
Artist

Medium: Stoneware



Title: Storage Jar (Tsubo)

Date: 14th - 15th century

Medium: Handbuilt stoneware with natural ash glaze and kiln deposits



Title: Sub-Mycenean Jug

Date: circa 1200 - 1075 B.C.E.

Medium: Yellow clay with black and red slip; white paint

Title: Table Slab Vessel

Date: circa 1990

Primary Maker: Yasuhisa Kohyama

Medium: Cut and modeled Shigaraki stoneware with partial natural ash glaze



Title: Tall Bowl with Lid

Date: n.d.

Primary Maker: Sarah Walton

Medium: Glazed stoneware

Title: Tall Footed Bowl

Date: n.d.

Primary Maker: Maija Grotell

Medium: Glazed stoneware

Title: Tall Pot

Date: n.d.

Medium: Clay



Title: Tall Vase

Date: 1908

Primary Maker: Kitaro Shirayamadani

Medium: Earthenware with slip-painted decoration under a matte vellum glaze



Title: Tankard

Date: 1701

Medium: Blue tin-glazed earthenware (faience) with pewter lid

Title: Tazza

Date: 17th - 18th century

Medium: Tin-glazed
earthenware



Title: Tea Bowl

Date: n.d.

Primary Maker: Deiryu Kutsu
(Kanshu Sojun)

Medium: Glazed stoneware
with underglaze slip-painted
calligraphy

Title: Tea Bowl

Date: circa 2005

Primary Maker: Cheon Han
Bong

Medium: Glazed stoneware
(buncheong)



Title: Tea Bowl

Date: 12th - 13th century

Primary Maker: Unknown
Artist

Medium: Jian (stoneware),
with 'hare's fur' glaze



Title: Tea Bowl

Date: 12th - 13th century

Primary Maker: Unknown
Artist

Medium: Glazed earthenware
with over-glaze decoration in
ash paste and slip paste



**Title: Tea Bowl and
Saucer**

Date: 1783 - 1792

Primary Maker: Royal
Worcester Porcelain factory

Medium: Hard-paste porcelain
with overglaze enamel and gilt
decoration

**Title: Tea Bowl and
Saucer**

Date: circa 1727

Medium: Painted and gilt
porcelain

Title: Tea Caddy

Date: circa 1775 - 1800

Primary Maker: Shorthose
and Co.

Medium: Porcelain with blue
transfer-printed decoration

Title: Tea Caddy and Lid

Date: 1761 - 1763

Primary Maker: Gotowski
Factory

Medium: Partially glazed
porcelain



Title: Tea Cup
Date: 1905 - 1999
Primary Maker: Bunsho Gitei (Kasumi)
Medium: Glazed stoneware with underglaze slip-painted calligraphy



Title: Tea Cup
Date: 1905 - 1999
Primary Maker: Bunsho Gitei (Kasumi)
Medium: Glazed stoneware with underglaze slip-painted calligraphy



Title: Tea Cup
Date: 1905 - 1999
Primary Maker: Bunsho Gitei (Kasumi)
Medium: Glazed stoneware with underglaze slip-painted calligraphy



Title: Tea Cup
Date: 1905 - 1999
Primary Maker: Bunsho Gitei (Kasumi)
Medium: Glazed stoneware with underglaze slip-painted calligraphy



Title: Tea Cup
Date: 1905 - 1999
Primary Maker: Bunsho Gitei (Kasumi)
Medium: Glazed stoneware with underglaze slip-painted calligraphy

Title: Tea Cups
Date: 1905 - 1999
Primary Maker: Bunsho Gitei (Kasumi)
Medium: Glazed stoneware with underglaze slip-painted calligraphy



Title: Tea Jar
Date: probably 19th century
Primary Maker: Chodo Imai
Medium: Glazed stoneware with feldspar ishihaze (Shigaraki ware)



Title: Tea Pot
Date: 1929 (design, in production 1929 - 1962)
Primary Maker: Otto Lindig
Medium: Glazed slip-cast earthenware

Title: Tea Pot
Date: 1929 (design; in production 1929 - 1962)
Primary Maker: Otto Lindig
Medium: Glazed slip-cast earthenware



Title: Tea Pot

Date: 1929 (design, in production 1929 - 1962)

Primary Maker: Otto Lindig

Medium: Glazed slip-cast earthenware

Title: Tea Pot

Date: circa 1800

Primary Maker: Rockingham Ceramic Factory, England

Medium: Porcelain with overglaze gilt decoration



Title: Tea Pot

Date: 1946 (design, in production 1946 - circa 1965)

Primary Maker: Russel Wright

Medium: Cast glazed earthenware



Title: Teapot

Date: circa 1800 - 1820

Primary Maker: Unknown Artist

Medium: Porcelain with five-color glaze and gilding

Title: Tea Pot and Lid

Date: circa 1770

Primary Maker: Chelsea-Derby Porcelain Factory

Medium: Porcelain with overglaze enamel and gilt decoration

Title: Tea Pot and Lid

Date: 1761 - 1763

Primary Maker: Gotowski Factory

Medium: Partially glazed porcelain

Title: Thirteen Sherds of Red-Figure Kylikes: Tondo Rims

Date: n.d.

Medium: Earthenware with slip-painted decoration

Title: Thirty-Two Handle Fragments from Red-Figure Kylikes

Date: n.d.

Medium: Earthenware with slip-painted decoration

Title: Three Red Figure Kylix Fragments

Date: n.d.

Medium: Earthenware with slip-painted decoration

**Title: Three Red-Figure
Kylix Fragments**

Date: n.d.

Medium: Earthenware with
slip-painted decoration, black
and white paint



**Title: Tomb Figure
(Bixie): Ram**

Date: 317 - 419

Medium: Green-glazed
(celadon) earthenware



Title: Translated Vase

Date: 2007

Primary Maker: Yeesoookyung

Medium: Ceramic fragments,
epoxy, and gold leaf

**Title: Tripod Cooking
Vessel (Li)**

Date: 3000 - 2000 B.C.E.

Medium: Red-orange
earthenware

**Title: Tripod Cooking
Vessel (Liding)**

Date: 2000 - 1300 B.C.E.

Medium: Burnished black
earthenware



**Title: Tripod Jar with
Cover**

Date: circa 2500 B.C.E.

Medium: Burnished unglazed
earthenware (blackware)

Title: Tripod Stand (?)

Date: n.d.

Medium: Slip-painted
earthenware with cold-painted
decoration



Title: Tumbler Vase

Date: n.d.

Primary Maker: Eugene
Deutsch

Medium: Glazed earthenware
(?) or stoneware (?)



Title: Turtle Soup Bowl

Date: circa 1900

Primary Maker: Moore Bros.

Medium: Glazed porcelain
with gilt decoration

**Title: Twenty-Three
Sherds of Red-Figure
Kylikes: Floral
Ornaments from Armed
Handles**

Date: n.d.

Primary Maker: Painter of
Berlin 2268

Medium: Earthenware with
slip-painted decoration

**Title: Two Fragments
from a Small Vase**

Date: circa 2nd century

Medium: Partially glazed
earthenware

**Title: Two Fragments of
Red Figure Calyx-Krater**

Date: circa 430 B.C.E.

Primary Maker: Polion

Medium: Earthenware with
slip-painted decoration



Title: Two-Handled Bowl

Date: 6th century B.C.E.? or
later

Medium: Earthenware with
slip-painted decoration



Title: Two-Handled Jar

Date: n.d.

Medium: Earthenware with
slip-painted decoration

**Title: Two Handled
Loving Cup**

Date: circa 1816

Primary Maker: Grainger and
Company

Medium: Partial gilt porcelain
with transfer decoration

**Title: Two-Lobed Oval
Tray**

Date: 1925 - 1926

Primary Maker: Theodor
Bogler

Medium: Glazed earthenware
with polychrome decoration

**Title: Two Red-Figure
Kylix Fragments**

Date: n.d.

Medium: Earthenware with
slip-painted decoration



**Title: Two Tripodic
Amphorae Joined**

Date: circa 1900 - 1750 B.C.E.

Medium: Slip painted
earthenware with incised
decoration



Title: Unguentarium
Date: circa 50 - 150
Medium: Clay; reddish-brown surface with purple paint remains



Title: Untitled
Date: 2003
Primary Maker: Gim Yi-kyung ()
Medium: Glazed porcelain with overglaze slip



Title: Untitled
Date: 1964
Primary Maker: Ruth Duckworth
Medium: Glazed hand-built stoneware



Title: Untitled
Date: n.d.
Primary Maker: Ruth Duckworth
Medium: Ceramic

Title: Untitled
Date: circa 1974
Primary Maker: Ruth Duckworth
Medium: Ceramic wall relief



Title: Untitled [Landscape Sculptural Form]
Date: 1962 - 63
Primary Maker: Hiroaki Morino
Medium: Hand-built glazed stoneware with incised and perforated decoration



Title: Untitled [vessel]
Date: probably late 1960s
Primary Maker: Ruth Duckworth
Medium: Partially glazed stoneware



Title: Vase
Date: n.d.
Primary Maker: Emile Decoeur
Medium: Glazed porcelain

Title: Vase
Date: n.d.
Primary Maker: Hacik Gamityan
Medium: Ceramic, brown black glaze



Title: Vase
Date: 1930s
Primary Maker: Wilhelm Kåge
Medium: Glazed stoneware

Title: Vase
Date: 1946
Primary Maker: Maija Grotell
Medium: Glazed blue porcelain

Title: Vase
Date: n.d.
Primary Maker: Clyde Burt
Medium: Ceramic, white, brown, blue



Title: Vase
Date: circa 1960
Primary Maker: Win Ng
Medium: Glazed earthenware with slip-painted decoration



Title: Vase
Date: circa 1910 - 1915
Primary Maker: Turn-Teplitz Factory
Medium: Glazed porcelain with overglaze gilt decoration

Title: Vase
Date: circa 1940
Primary Maker: Wilhelm Kåge
Medium: Glazed stoneware (Farstaware)

Title: Vase
Date: circa 1940
Primary Maker: Wilhelm Kåge
Medium: Glazed stoneware (Farstaware)

Title: Vase
Date: circa 1940
Primary Maker: Wilhelm Kåge
Medium: Glazed stoneware (Farstaware)



Title: Vase
Date: 1909
Primary Maker: Pilkingtons Tile and Pottery Company
Medium: Glazed earthenware

Title: Vase

Date: circa 1965

Primary Maker: Paul Edmund Soldner

Medium: Glazed and unglazed earthenware (raku technique)



Title: Vase

Date: early 1960s (before 1964)

Primary Maker: Erik Pløen

Medium: Glazed stoneware

Title: Vase

Date: 20th century

Primary Maker: Sun Chao

Medium: Stoneware with zinc crystalline glazes

Title: Vase

Date: 20th century

Primary Maker: Sun Chao

Medium: Stoneware with zinc crystalline glazes

Title: Vase

Date: n.d.

Primary Maker: Trevor Corser

Medium: Glazed earthenware

Title: Vase

Date: n.d.

Primary Maker: William Pillin

Medium: Earthenware with slip painted decoration

Title: Vase

Date: circa 1896

Primary Maker: Weller Pottery, Zanesville, Ohio

Medium: Glazed earthenware with underglaze slip-painted decoration (Louvetsa ware)

Title: Vase

Date: 1912

Primary Maker: Rookwood Pottery, Cincinnati, Ohio

Medium: Glazed earthenware with slip-painted decoration



Title: Vase

Date: probably 1942 - 1947 or 1947 - 1949

Primary Maker: Marguerite Friedländer Wildenhain

Medium: Glazed stoneware



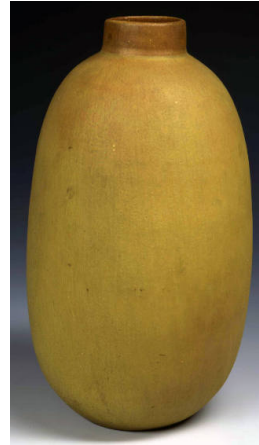
Title: Vase
Date: 1904 - 1914
Primary Maker: Cadmon Robertson
Medium: Glazed semi-porcelain

Title: Vase
Date: n.d.
Primary Maker: Otto Natzler
Medium: Glazed earthenware (iridescent black)



Title: Vase
Date: n.d.
Primary Maker: Otto Natzler
Medium: Glazed earthenware

Title: Vase
Date: n.d.
Primary Maker: Otto Natzler
Medium: Glazed earthenware



Title: Vase
Date: circa 1940 (before 1943)
Primary Maker: Otto Natzler
Medium: Glazed earthenware



Title: Vase
Date: 1927
Primary Maker: Gudrun Baudisch
Medium: Glazed earthenware



Title: Vase
Date: 1921
Primary Maker: Hilda Jesser
Medium: Glazed earthenware with slip-painted decoration



Title: Vase
Date: probably 1914
Primary Maker: Pilkingtons Tile and Pottery Company
Medium: Glazed earthenware



Title: Vase
Date: circa 1950
Primary Maker: David Leach
Medium: Stoneware with sgraffito and iron oxide slip-painted decoration under an ash glaze



Title: Vase
Date: 1916
Primary Maker: Ruskin Pottery
Medium: Iridescent glazed earthenware



Title: Vase
Date: 1962 - 63
Primary Maker: Hiroaki Morino
Medium: Hand-thrown partially glazed stoneware



Title: Vase
Date: n.d.
Primary Maker: Janet Leach
Medium: Glazed earthenware



Title: Vase
Date: n.d.
Primary Maker: Marguerite Friedländer Wildenhain
Medium: Hand-thrown stoneware with black inner and rim glaze, pale brown outer glaze under a clear glaze, and unglazed foot



Title: Vase
Date: n.d.
Primary Maker: Otto Lindig
Medium: Hand-thrown stoneware (sand-colored fabric) with cream inner glaze and mottled brown outer glaze



Title: Vase
Date: 1915 - 1920
Primary Maker: B. Bloch & Co., Eichwald
Medium: Glazed slip-cast? earthenware with underglaze enamel decoration



Title: Vase
Date: 1915 - 1920
Primary Maker: B. Bloch & Co., Eichwald
Medium: Glazed slip-cast? earthenware with underglaze enamel decoration



Title: Vase
Date: 10th - 11th century
Medium: Partially glazed earthenware



Title: Vase
Date: 5th or 6th century B.C.E.
Medium: Aryballos with geometric design

Title: Vase

Date: n.d.

Title: Vase

Date: circa 1920

Primary Maker: Unknown

Artist

Medium: Underglaze and
overglaze polychrome enamel
decoration on porcelain

Title: Vase

Date: circa 1670

Primary Maker: Unknown

Artist

Medium: Porcelain with cobalt
blue underglaze and enamel
overglaze

Title: Vase Bowl

Date: n.d.

Primary Maker: Alison Britton

Medium: Glazed stoneware

Title: Vase Fragment

Date: circa 2nd century B.C.E.

Primary Maker: Unknown

Artist

Medium: Partially glazed
earthenware (Megarian ware)

Title: Vase Fragment

Date: n.d.

Medium: Pottery

Title: Vase Fragment

Date: mid- 7th century B.C.E.

Medium: Dark paint on light
clay

Title: Vase Fragment

Date: n.d.

Medium: Cream clay with
black glaze design

Title: Vase Fragment

Date: late 7th century B.C.E.

Medium: Clay with reddish
brown and black paint

Title: Vase (Hu)

Date: 206 B.C.E. - 8 C.E.

Medium: Unglazed earthenware with remains of polychrome cold-painted decoration

Title: Vase Sherd

Date: circa 750 B.C.E.

Medium: Pinkish-buff clay with black glaze design



Title: Vessel

Date: 200 B.C.E. - 250 C.E.

Medium: Unglazed earthenware



Title: Vessel

Date: circa 2500 B.C.E.

Primary Maker: Unknown Artist

Medium: Unglazed low-fired earthenware with carved, incised and applied decoration



Title: Vessel

Date: n.d.

Primary Maker: Unknown Artist

Medium: Stoneware

Title: Vessel Fragment

Date: 5th - 6th century

Medium: Slip-painted earthenware with roulette decoration

Title: Vessel Fragment

Date: 2500 - 2000 B.C.E.

Medium: Earthenware with slip-painted decoration

Title: Vessel Fragment

Date: n.d.

Medium: Earthenware with slip-painted decoration on exterior

Title: Vessel Fragment:

Aryballos Bottom (?)

Date: n.d.

Primary Maker: Unknown Artist

Medium: Earthenware with slip-painted decoration

**Title: Vessel Fragment:
Base and Side of a Bowl**
Date: n.d.
Medium: Slip-painted
earthenware, micaceous fabric

**Title: Vessel Fragment:
Base and Stem from a
Kylix**
Date: 1600 - 1100 B.C.E.
Medium: Earthenware

**Title: Vessel Fragment:
Body and Base from a
Conical Oinochoe**
Date: n.d.
Medium: Earthenware with
slip-painted decoration

**Title: Vessel Fragment:
Body and Base of a Cup**
Date: n.d.
Medium: Earthenware with
slip-painted decoration

**Title: Vessel Fragment:
Body and Handle Bases
from a Kothon**
Date: n.d.
Medium: Earthenware with
slip-painted decoration

**Title: Vessel Fragment:
Bottom and Base from
an Oinochoe**
Date: n.d.
Medium: Earthenware with
slip-painted decoration

**Title: Vessel Fragment:
Bottom from a Conical
Oinochoe**
Date: n.d.
Medium: Earthenware with
slip-painted decoration

**Title: Vessel Fragment:
Mouth and Neck of a
Trefoil Oinochoe**
Date: n.d.
Medium: Earthenware with
slip-painted decoration

**Title: Vessel Fragment:
Rim**
Date: n.d.
Medium: Earthenware with red
and brown slip-painted
decoration

**Title: Vessel Fragment:
Rim**

Date: 2000 - 1600 B.C.E.

Medium: Earthenware with
slip-painted decoration

**Title: Vessel Fragment:
Rim from a Kotyle**

Date: circa 750 - 700 B.C.E.

Medium: Earthenware with
slip-painted decoration

**Title: Vessel Fragment:
Rim from a Kotyle**

Date: circa 7th century B.C.E.

Medium: Earthenware with
slip-painted decoration

**Title: Vessel Fragment:
Rim from a Krater**

Date: 6th century B.C.E.

Medium: Earthenware with
slip-painted decoration

**Title: Vessel Fragment:
Rim from a Skyphos**

Date: circa first half of 8th
century B.C.E.

Medium: Earthenware with
slip-painted decoration

**Title: Vessel Fragment:
Rim from a Skyphos**

Date: circa first half of 7th
century B.C.E.

Medium: Earthenware with
slip-painted decoration

**Title: Vessel Fragment:
Rim Sherd from a Plate**

Date: n.d.

Medium: Earthenware with
slip-painted decoration

**Title: Vessel Fragment:
Rim Sherd from a Plate**

Date: n.d.

Medium: Earthenware with
slip-painted decoration

**Title: Vessel Fragments:
Eighteen Body Sherds
from Cups**

Date: 6th century B.C.E.

Medium: Earthenware

**Title: Vessel Fragments:
Five Knobs from Lids of
Pyxides**

Date: probably 6th century B.C.
E.

Medium: Earthenware

**Title: Vessel Fragments:
Five Lid Sherds from
Pyxides**

Date: 6th century B.C.E.

Medium: Earthenware with
slip-painted decoration

**Title: Vessel Fragments:
Four Body Sherds from
Oinochoai**

Date: n.d.

Medium: Earthenware with
slip-painted decoration

**Title: Vessel Fragments:
Four Lips from Alabastra**

Date: 6th century B.C.E.

Medium: Earthenware with
slip-painted decoration

**Title: Vessel Fragment:
Sherd from a Kotyle**

Date: circa 650 - 600 B.C.E.

Medium: Earthenware with
slip-painted decoration

**Title: Vessel Fragment:
Sherd from the Body
and Foot on an Ovoid
Aryballos**

Date: n.d.

Medium: Earthenware with
slip-painted decoration

**Title: Vessel Fragment:
Sherd from the Body of
a Pyxis**

Date: n.d.

Medium: Earthenware with
slip-painted decoration

**Title: Vessel Fragment:
Sherd from the Lid of a
Pyxis**

Date: circa late 8th - first
quarter 7th century B.C.E.

Medium: Earthenware with
slip-painted decoration

**Title: Vessel Fragment:
Sherd of Lid from a Pyxis**

Date: n.d.

Medium: Earthenware with
slip-painted decoration

**Title: Vessel Fragment:
Sherd of the Body and
Base of a Conical
Oinochoe**

Date: circa last quarter of 8th century B.C.E.

Medium: Earthenware with slip-painted decoration

**Title: Vessel Fragment:
Sherd of the Body and
Rim from a Pyxis**

Date: n.d.

Medium: Earthenware with slip-painted decoration

**Title: Vessel Fragment:
Sherd of the Body, Rim
and Handle Base**

Date: n.d.

Primary Maker: Unknown Artist

Medium: Earthenware with slip-painted decoration

**Title: Vessel Fragment:
Shoulder and Handle
from a Miniature
Aryballos**

Date: n.d.

Medium: Earthenware with slip-painted decoration

**Title: Vessel Fragment:
Side and Bottom from a
Flat-Bottomed Oinochoe**

Date: n.d.

Medium: Earthenware with slip-painted decoration

**Title: Vessel Fragments:
Nine Shoulder, Lid and
Handle Sherds from
Oinochoai**

Date: n.d.

Medium: Earthenware with slip-painted decoration

**Title: Vessel Fragments:
Rim and Body Sherd
and Knob with Part of a
Lid of a Pyxis**

Date: n.d.

Medium: Earthenware with slip-painted decoration

**Title: Vessel Fragments:
Seventeen Sherds from
the Bodies of Aryballoi**

Date: 6th century B.C.E.

Medium: Earthenware with slip-painted decoration

**Title: Vessel Fragments:
Seven Unidentified
Sherds**

Date: n.d.

Medium: Earthenware, with evidence of burning

**Title: Vessel Fragments:
Six Rim Sherds from
Cups**

Date: 6th century B.C.E.

Medium: Earthenware with
slip-painted decoration

**Title: Vessel Fragment:
Stem from a Minyan
Goblet**

Date: 2000 - 1600 B.C.E.

Medium: Burnished
earthenware with incised
decoration

**Title: Vessel Fragments:
Two Sherds from the
Bodies of Quatrefoil
Aryballoi**

Date: late 6th century B.C.E.

Medium: Earthenware with
slip-painted decoration

Title: Vessel Sherd

Date: circa 8th century B.C.E.

Medium: Pink clay with yellow-
cream slip

Title: Vessel Sherd

Date: n.d.

Medium: Earthenware with
cold-painted (?) or slip-painted
(?) decoration

Title: Vessel Sherd: Silen

Date: circa 550 - 530 B.C.E.

Medium: Earthenware with
slip-painted decoration



Title: Vessel Stand

Date: n.d.

Primary Maker: Unknown
Artist

Medium: Unglazed
earthenware with burnished
slip-painted surface



Title: Waster

Date: late 13th - early 14th
century

Medium: Glazed stoneware,
with off-white slip, dark brown...



Title: Water Dropper

Date: n.d.

Primary Maker: Bando Toko ()
Medium: Glazed earthenware
with Neritage (marbleized)
decoration



Title: Water Dropper
Date: 1900 - 1976
Primary Maker: Sakuma Totaro the Elder
Medium: Glazed earthenware (Mashiko kilns)



Title: Water Dropper
Date: n.d.
Primary Maker: Sakuma the Younger, Totaro
Medium: Glazed stoneware (Mashiko kilns)



Title: Water Dropper
Date: n.d.
Primary Maker: Sakuma the Younger, Totaro
Medium: Glazed earthenware (Mashiko kilns)



Title: Water Dropper
Date: n.d.
Medium: Glazed earthenware



Title: Water Dropper
Date: n.d.
Medium: Glazed stoneware



Title: Water Dropper
Date: n.d.
Medium: Glazed stoneware



Title: Water Dropper
Date: n.d.
Medium: Glazed earthenware with overglaze decoration



Title: Water Dropper
Date: n.d.
Medium: Glazed earthenware



Title: Water Dropper
Date: n.d.
Primary Maker: Sakuma Family
Medium: Glazed stoneware (Mashiko kilns)



Title: Water Dropper
Date: 19th century
Primary Maker: Unknown Artist
Medium: Porcelain with pale glaze and molded decoration of crane among clouds



Title: Water Dropper
Date: n.d.
Medium: Glazed earthenware



Title: Water Dropper
Date: n.d.
Primary Maker: Funaki Family
Medium: Glazed earthenware with slip-painted decoration (Fushina kilns)



Title: Water Dropper
Date: n.d.
Primary Maker: Funaki Family
Medium: Glazed earthenware with slip-painted decoration (Fushina kilns)



Title: Water Dropper
Date: n.d.
Primary Maker: Funaki Family
Medium: Glazed earthenware with slip-painted decoration (Fushina kilns)



Title: Water Dropper
Date: n.d.
Primary Maker: Funaki Family
Medium: Glazed earthenware with slip-painted decoration (Fushina kilns)



Title: Water Dropper
Date: n.d.
Medium: Porcelain with underglaze polychrome decoration in Kakiemon ...



Title: Water Dropper
Date: n.d.
Medium: Glazed earthenware



Title: Water Dropper in the Shape of Flower Petals and a Butterfly
Date: 19th century
Primary Maker: Unknown Artist
Medium: Glazed porcelain with underglaze cobalt blue painted decoration

**Title: White-Ground
Alabastron: An Altar
Flanked by a Man and a
Standing Youth**

Date: circa 440 B.C.E.

Medium: Earthenware with
slip-painted and cold-painted
decoration

**Title: White-Ground
Lekythos Fragment**

Date: circa 5th - 1st century B.
C.E.

Medium: Earthenware with red
and yellow slip-painted (?) and
cold-painted decoration

**Title: White-Ground
Lekythos Fragment, Last
half of 5th century B.C.E.**

Date: late 5th century B.C.E.

Medium: Earthenware with
slip-painted decoration



**Title: White-Ground
Lekythos Fragment:
Profile Head of a
Woman, late 5th century
B.C.E.**

Date: Last half of 5th century B.
C.E.

Medium: Earthenware with
slip-painted decoration

**Title: White-Ground
Lekythos: Three Stelae**

Date: circa last quarter of 5th
century B.C.E.

Medium: Earthenware with
slip-painted and cold-painted
decoration



**Title: White painted
animal vase**

Date: circa 1700 - 1600 B.C.E.

Medium: Light clay with brown
paint



Title: White Painted Bowl

Date: 1750 - 1700 B.C.E.

Medium: Buff clay with brown
to red matte paint



Title: White painted bowl

Date: 1750 - 1700 B.C.E.

Medium: Buff clay with matte
brown paint



Title: White painted bowl

Date: 1750 - 1700 B.C.E.

Medium: Light clay with brown
paint



Title: White painted bowl

Date: 1750 - 1700 B.C.E.

Medium: Pottery; brown paint remains

Title: White painted bowl

Date: circa 1750 - 1700 B.C.E.

Medium: Pottery with paint remains

Title: White painted bowl

Date: circa 1750 - 1700 B.C.E.

Medium: Light clay with red paint

Title: White Painted Jug

Date: 1750 - 1700 B.C.E.

Medium: Buff clay with brown to red matt paint



Title: White Painted Jug

Date: 1750 - 1700 B.C.E.

Medium: Light clay with brown to red slightly polished paint

Title: White painted jug

Date: 1750 - 1600 B.C.E.

Medium: Buff clay with remains of matt brown paint

Title: White painted jug

Date: circa 1700 - 1600 B.C.E.

Medium: Light clay with brown matt paint

Title: White painted jug

Date: circa 1700 - 1600 B.C.E.

Medium: Light clay with brown to red paint



Title: White Painted Jug

Date: 1050 - 950 B.C.E.

Medium: Earthenware (buff clay) with reddish-brown and light red accessory painted decoration

Title: White Painted Jug

Date: 1050 - 950 B.C.E.

Medium: Earthenware with buff slip with reddish-brown to dark brown painted decoration



Title: White painted Juglet

Date: 1750 - 1700 B.C.E.

Medium: Pottery; red paint with polished surface



Title: White painted pendent line style bottle

Date: 1750 - 1700 B.C.E.

Medium: Clay with reddish-brown paint

Title: White Painted String Hole Jug

Date: 1750 - 1700 B.C.E.

Medium: Clay with dark paint

Title: White painted string hole jug

Date: 1700 - 1600 B.C.E.

Medium: Buff clay with remains of paint

Title: White Painted String Hole Jug

Date: 1750 - 1700 B.C.E.

Medium: Light clay with red lustrous paint



Title: White Painted String Hole Jug

Date: 1750 - 1600 B.C.E.

Medium: Clay with paint

Title: White Painted String Hole Style Jug

Date: circa 1750 - 1700 B.C.E.

Medium: Yellow ground with red and black pattern

Title: White painted tankard

Date: circa 1700 - 1600 B.C.E.

Medium: Light clay, brown paint on white slip



Title: White slip bowl

Date: circa 1550 - 1400 B.C.E.

Medium: Red clay with whitish slip and brown paint



Title: White slip bowl

Date: circa 1400 - 1275 B.C.E.

Medium: Red clay with white slip and brown paint



Title: White Slip Bowl

Date: circa 1400 - 1275 B.C.E.

Medium: Red clay with white slip and brown paint

Title: White slip bowl

Date: circa 1400 - 1275

Medium: Red clay with white slip and brown paint

Title: White slip bowl

Date: 1400 - 1275 B.C.E.

Medium: Red clay with white slip and brown paint



Title: Wine Bottle with Dragon and Flaming Pearl Decoration

Date: First half of 19th century

Primary Maker: Unknown Artist

Medium: Glazed porcelain with underglaze cobalt blue painted decoration

Title: Wine Cup

Date: 12th - 13th century

Primary Maker: Unknown Artist

Medium: Stoneware with blue-green (celadon) glaze and incised decoration



Title: Winter Tea Bowl

Date: 1894 - 1978

Primary Maker: Shoji Hamada

Medium: Glazed stoneware

Title: Woman with Guitar

Date: early 20th century

Medium: Glazed polychrome ceramic



Title: "Zürich Service"

Coffee Pot

Date: circa 1935

Primary Maker: Hermann
Gretsch

Medium: Glazed slip-cast
earthenware with partial
monochrome (dark blue)
decoration, from the so-called
Zürich Service ('Karlsruhe'
design)



Title: "Zürich Service"

Tea Pot

Date: circa 1935

Primary Maker: Hermann
Gretsch

Medium: Glazed slip-cast
earthenware with partial
monochrome (pale blue)
decoration, from the so-called
Zürich Service ('Karlsruhe'
design)