

Basic Report

Title: Alms Basin

Date: 16th century

Primary Maker: Unknown Artist

Medium: Hammered brass with stamped decoration

**Title: Ardagh Chalice**

Date: circa 1891 - 1892 (facsimile, after 8th - century original)

Primary Maker: Edmond Johnson

Medium: Wrought and cast silver with gilt, enamel, and colored glass decoration

**Title: Ardakillen Brooch**

Date: circa 1892 (facsimile)

Primary Maker: Edmond Johnson

**Title: Arrowhead**

Date: circa early first millenium

Medium: Cast bronze

**Title: Arrowhead**

Date: circa first millenium

Medium: Bronze

**Title: Arrowhead**

Date: circa early first millenium

Medium: Bronze

Title: Baluster

Date: circa 1899 - 1901 or 1903 - 1904

Primary Maker: George Grant Elmslie

Medium: Bronze-plated and painted cast iron

Title: Baluster

Date: circa 1899 - 1901 or 1903 - 1904

Primary Maker: George Grant Elmslie

Medium: Painted cast iron

Title: Baluster

Date: circa 1899 - 1901 or 1903 - 1904

Primary Maker: George Grant Elmslie

Medium: Painted cast iron

Title: Baluster

Date: circa 1899 - 1901 or
1903 - 1904

Primary Maker: George Grant
Elmslie

Medium: Painted cast iron

**Title: Bedside Lamp
(Kandem Lamp)**

Date: 1928 (design)

Primary Maker: Marianne
Brandt

Medium: Lacquered steel
plate with original electrical
cord

Title: Bell of Armagh

Date: circa 1892 (facsimile)

Primary Maker: Edmond
Johnson



**Title: Belt Buckle (in the
Shape of a Cross)**

Date: 6th century

Medium: Cast bronze



**Title: Belt Buckle (with a
Cross)**

Date: 6th century

Medium: Cast bronze



Title: Biscuit Barrel

Date: circa 1903

Primary Maker: Archibald
Knox

Medium: Cast pewter with
enamel inlay

**Title: Blotter Corner, in
Viking Pattern**

Date: 1920s

Primary Maker: Marshall Field
and Company Craft Shop

Medium: Bronze

**Title: Blotter Corner, in
Viking Pattern**

Date: 1920s

Primary Maker: Marshall Field
and Company Craft Shop

Medium: Bronze

**Title: Blotter Corner, in
Viking Pattern**

Date: 1920s

Primary Maker: Marshall Field
and Company Craft Shop

Medium: Bronze

**Title: Blotter Corner, in
Viking Pattern**

Date: 1920s

Primary Maker: Marshall Field
and Company Craft Shop

Medium: Bronze

**Title: Blotter Corner
("Pine Needle" pattern)**

Date: circa 1902

Primary Maker: Tiffany Studios

Medium: Gilt cast bronze

**Title: Blotter Edge
("Zodiac" pattern)**

Date: circa 1902

Primary Maker: Tiffany Studios

Medium: Gilt cast bronze with
cold-painted decoration

**Title: Blotter Edge
("Zodiac" pattern)**

Date: circa 1902

Primary Maker: Tiffany Studios

Medium: Gilt cast bronze with
cold-painted decoration



**Title: Book Cover:
Crucifixion**

Date: 1700 - 1750

Primary Maker: Unknown
Artist

Medium: Silver repousse



Title: Bookend

Date: circa 1906

Primary Maker: Tiffany Studios

Medium: Gilt bronze with cold
painted decoration



Title: Bookend

Date: circa 1906

Primary Maker: Tiffany Studios

Medium: Gilt bronze with cold
painted decoration

Title: Bordered Panel

Date: n.d.

Primary Maker: Louis H.
Sullivan

Medium: Gilded iron



Title: Bow Fibula

Date: 3rd - 4th century

Medium: Gilt bronze



Title: Bowl
Date: circa 1918
Primary Maker: Falick Novick
Medium: Hammered silver



Title: Bowl
Date: n.d.
Medium: Bronze



Title: Bronze Armlet
Date: circa 1892 (facsimile)
Primary Maker: Edmond Johnson



Title: Bronze Disc, Incorrectly Restored as a Sunflower Pin
Date: circa 1892 (facsimile)
Primary Maker: Edmond Johnson



Title: Bronze Fibula
Date: circa 1892 (facsimile)
Primary Maker: Edmond Johnson



Title: Bronze Fibula
Date: circa 1892 (facsimile)
Primary Maker: Edmond Johnson



Title: Bronze Fibula
Date: circa 1892 (facsimile)
Primary Maker: Edmond Johnson



Title: Bronze Fibula
Date: circa 1892 (facsimile)
Primary Maker: Edmond Johnson



Title: Bronze Fibula
Date: circa 1892 (facsimile)
Primary Maker: Edmond Johnson



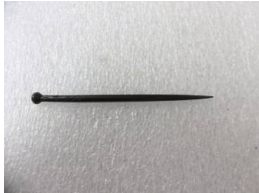
**Title: Bronze Object
from County Antrim,
Perhaps Part of a Brooch**
Date: circa 1892 (facsimile)
Primary Maker: Edmond
Johnson



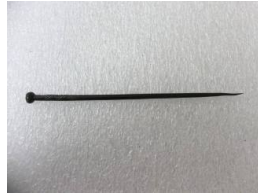
Title: Bronze Pin
Date: circa 1892 (facsimile)
Primary Maker: Edmond
Johnson



Title: Bronze Pin
Date: circa 1892 (facsimile)
Primary Maker: Edmond
Johnson



Title: Bronze Pin
Date: circa 1892 (facsimile)
Primary Maker: Edmond
Johnson



Title: Bronze Pin
Date: circa 1892 (facsimile)
Primary Maker: Edmond
Johnson



Title: Bronze Pin
Date: circa 1892 (facsimile)
Primary Maker: Edmond
Johnson

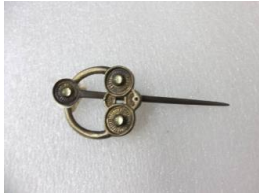


Title: Bronze Pin
Date: circa 1892 (facsimile)
Primary Maker: Edmond
Johnson



Title: Bronze Pin
Date: circa 1892 (facsimile)
Primary Maker: Edmond
Johnson

Title: Bronze Trumpet
Date: circa 1892 (facsimile)
Primary Maker: Edmond
Johnson



Title: Brooch

Date: circa 1892 (facsimile)

Primary Maker: Edmond Johnson



Title: Brooch

Date: circa 1892 (facsimile)

Primary Maker: Edmond Johnson

Title: Brooch

Date: circa 1892 (facsimile)

Primary Maker: Edmond Johnson



Title: Brooch from County Donegal

Date: circa 1892 (facsimile)

Primary Maker: Edmond Johnson



Title: Brooch from Dunshaughlin

Date: circa 1892 (facsimile)

Primary Maker: Edmond Johnson



Title: Brooch from Kilmainham (Knight Templars' Brooch)

Date: circa 1892 (facsimile)

Primary Maker: Edmond Johnson



Title: Buddhist Temple Bell

Date: late 19th century

Medium: Cast bronze



Title: Calling Card Tray with Wheat Motif

Date: late 19th - early 20th century

Primary Maker: J.P. Kayser & Sohn

Medium: Cast pewter

Title: Candlestick

Date: base 18th century, nozzle 19th century

Primary Maker: Unknown Artist

Medium: Cast brass with stamped decoration

Title: Candlestick

Date: 1900 - 1905

Primary Maker: Archibald Knox

Medium: Cast and wrought pewter

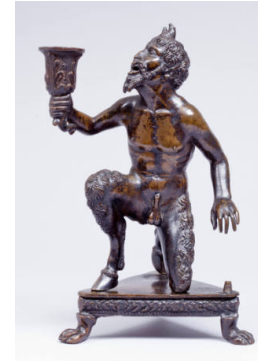


Title: Candlestick

Date: circa 1900

Primary Maker: Tiffany Studios

Medium: Bronze



Title: Candlestick and Inkwell (or Sandbox) Depicting a Kneeling Satyr

Date: circa 1500 - 1509

Primary Maker: Severo da Ravenna

Medium: Cast bronze

Title: Candlestick Collar

Date: 1900 - 1905

Primary Maker: Archibald Knox

Medium: Cast and wrought pewter

Title: Candlestick with Globe

Date: circa 1905

Primary Maker: Tiffany Studios

Medium: Patinated cast bronze and blown Favrile glass shade



Title: Candlestick with Globe

Date: circa 1905

Primary Maker: Tiffany Studios

Medium: Patinated cast bronze and blown Favrile glass shade



Title: Carnivorous Flower
Date: 1953?
Primary Maker: Seymour Lipton
Medium: Welded nickel-silver on steel



Title: Cigarette Box
Date: circa 1902
Primary Maker: Tiffany Studios
Medium: Gilt bronze with onyx stained glass



Title: Circular Boss, Incorrectly Restored as a Sunflower Pin
Date: circa 1892 (facsimile)
Primary Maker: Edmond Johnson



Title: Clock
Date: circa 1902 - 1905
Primary Maker: Archibald Knox
Medium: Pewter with mother-of-pearl inlay, copper hands, and original winding key

Title: Commemorative Medallion, 1 of 77 in Wooden Chest with Drawers
Date: n.d.



Title: Compote
Date: circa 1925
Primary Maker: Georg Jensen
Medium: Cast and hammered sterling silver



Title: Covered Bowl
Date: circa mid- 1930s
Primary Maker: Hayno Focken
Medium: Hammered brass
with engraved decoration



Title: Covered Tazza
Date: circa 1500
Primary Maker: Unknown
Artist
Medium: Enamel on metal (?)

Title: Creamer
Date: circa 1905
Primary Maker: Unknown
Artist
Medium: Silver



Title: Cup and Saucer
Date: 1904
Primary Maker: Yeoung Najun
Medium: Hammered silver
with enamel decoration



Title: Cutlery
Date: circa 1903 - 1904
Primary Maker: Charles
Rennie Mackintosh
Medium: Silver electroplate



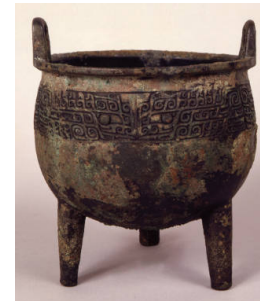
**Title: The Dead Christ
Attended by Angels**
Date: circa 1525 - 1550
Medium: Cast silver-gilt
bronze plaque



Title: Desk Box
Date: circa 1906
Primary Maker: Tiffany Studios
Medium: Gilt bronze with cold
painted decoration



Title: Desk Box
Date: circa 1906
Primary Maker: Tiffany Studios
Medium: Gilt bronze with cold
painted decoration



**Title: Ding (T'ing) (Ritual
Cooking Vessel)**
Date: 14th - 13th century B.C.
E.
Medium: Cast bronze



Title: Ding (T'ing) (Ritual Cooking Vessel)
Date: 13th - 12th century B.C. E.
Medium: Cast bronze



Title: Ding Tripod with Lid
Date: circa late 6th - early 5th century B.C.E.
Medium: Cast bronze

Title: Disc
Date: n.d.
Medium: Bronze



Title: Disc (Omphalos) Fibula
Date: 4th - 5th century
Medium: Bronze

Title: Disc with Raised Center
Date: n.d.
Medium: Bronze



Title: Disk Ring, Silver
Date: circa 1892 (facsimile)
Primary Maker: Edmond Johnson

Title: Door Boss or Cymbal
Date: n.d.
Medium: Cast bronze

Title: Door Knob
Date: 1893 - 1894
Primary Maker: Louis H. Sullivan
Medium: Painted cast iron

Title: Door Knob
Date: 1893 - 1894
Primary Maker: Louis H. Sullivan
Medium: Painted cast iron

Title: Door Knob**Date:** 1893 - 1894**Primary Maker:** Louis H.
Sullivan**Medium:** Painted cast iron

Title: Door Plate**Date:** 1893 - 1894**Primary Maker:** Louis H.
Sullivan**Medium:** Painted cast iron

Title: Door Plate**Date:** 1893 - 1894**Primary Maker:** Louis H.
Sullivan**Medium:** Painted cast iron

Title: Door Plate**Date:** 1893 - 1894**Primary Maker:** Louis H.
Sullivan**Medium:** Painted cast iron

Title: Door Plate**Date:** 1893 - 1894**Primary Maker:** Louis H.
Sullivan**Medium:** Painted cast iron

Title: Drinking Horn**Date:** circa 1892 (facsimile)**Primary Maker:** Edmond
Johnson

Title: Earring

Date: n.d.

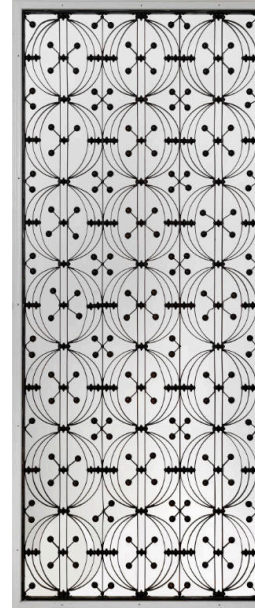
Medium: Bent bronze rod,
plated with gold

**Title: Elevator Enclosure
Screen**

Date: circa 1894

Primary Maker: Louis H.
Sullivan

Medium: Painted cast and
wrought iron

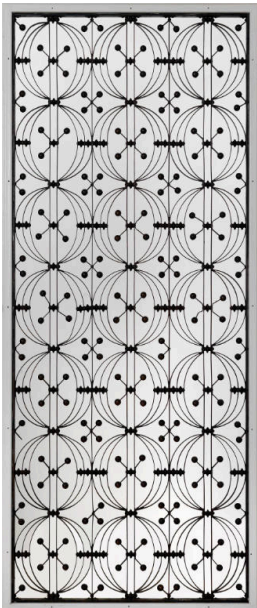


**Title: Elevator Enclosure
Screen**

Date: circa 1894

Primary Maker: Louis H.
Sullivan

Medium: Painted cast and
wrought iron



**Title: Elevator Enclosure
Screen**

Date: circa 1894

Primary Maker: Louis H.
Sullivan

Medium: Painted cast and
wrought iron

**Title: Fang Hu Square
Vase**

Date: circa 2nd century B.C.E.

Medium: Cast bronze with
gold plating

**Title: Fang Hu Square
Vase**

Date: 17th - 18th century?

Medium: Cast bronze



Title: Farnese Reliquary
Date: circa 1550, with 17th - century and later? reworkings
Primary Maker: Antonio Gentili (also called Antonio Gentili da Faenza)
Medium: Cast silver gilt, lapis lazuli, rock crystal, enamel, and églomisé



Title: Fish Knife
Date: circa 1903 - 1904
Primary Maker: Charles Rennie Mackintosh
Medium: Silver electroplate



Title: Five-Piece Tea Service
Date: circa 1902 - 1904
Primary Maker: Gerhardt & Co.
Medium: Hand-wrought silver



Title: Five-Piece Tea Service: Coffee Pot
Date: circa 1902 - 1904
Primary Maker: Gerhardt & Co.
Medium: Hand-wrought silver



Title: Five-Piece Tea Service: Creamer
Date: circa 1902 - 1904
Primary Maker: Gerhardt & Co.
Medium: Hand-wrought silver



Title: Five-Piece Tea Service: Sugar Bowl
Date: circa 1902 - 1904
Primary Maker: Gerhardt & Co.
Medium: Hand-wrought silver



Title: Five-Piece Tea Service: Tea Pot
Date: circa 1902 - 1904
Primary Maker: Gerhardt & Co.
Medium: Hand-wrought silver



Title: Five-Piece Tea Service: Tray
Date: circa 1902 - 1904
Primary Maker: Gerhardt & Co.
Medium: Hand-wrought silver



Title: Flower
Date: n.d.
Medium: Bronze



Title: Fork
Date: circa 1903 - 1904
Primary Maker: Charles Rennie Mackintosh
Medium: Silver electroplate



Title: Fork
Date: circa 1903 - 1904
Primary Maker: Charles Rennie Mackintosh
Medium: Silver electroplate

Title: Four Blotter Corners, in Viking Pattern
Date: 1920s
Primary Maker: Marshall Field and Company Craft Shop
Medium: Bronze



Title: Four-Lobed Brooch
Date: circa 1892 (facsimile)
Primary Maker: Edmond Johnson

Title: Framing Elements
Date: n.d.
Primary Maker: Louis H. Sullivan
Medium: Gilded iron



Title: Frog
Date: n.d.
Medium: Bronze

Title: Garment Clasp (thistle pattern)
Date: circa 1900
Primary Maker: Unknown Artist
Medium: Cast silver

Title: Ge (Dagger-Axe)
Date: circa 12th century B.C.E.
Medium: Cast bronze



Title: Ge (Dagger-Axe)
Date: circa 12th century B.C.E.
Medium: Cast bronze

Title: Ge (Dagger-Axe)
Date: circa 12th century B.C.E.
Medium: Cast bronze

Title: Ge (Dagger-Axe)
Date: circa 12th century B.C.E.
Medium: Cast bronze



Title: Ge (Dagger-Axe)
Date: circa 12th century B.C.E.
Medium: Cast bronze

Title: Ge (Ke) (Socketed Dagger-Axe)
Date: circa 12th century B.C.E.
Medium: Cast bronze



Title: Ge (Socketed Dagger-Axe)
Date: circa 12th century B.C.E.
Medium: Cast bronze



Title: Gold Armlet
Date: circa 1892 (facsimile)
Primary Maker: Edmond Johnson



Title: Gold Bar Torque
Date: circa 1892 (facsimile)
Primary Maker: Edmond Johnson



Title: Gold Collar
Date: circa 1892 (facsimile)
Primary Maker: Edmond Johnson



Title: Gold Collar
Date: circa 1892 (facsimile)
Primary Maker: Edmond Johnson



Title: Gold Collar
Date: circa 1892 (facsimile)
Primary Maker: Edmond Johnson



Title: Gold Collar
Date: circa 1892 (facsimile)
Primary Maker: Edmond Johnson



Title: Gold Collar
Date: circa 1892 (facsimile)
Primary Maker: Edmond Johnson



Title: Gold Dress Fastener
Date: circa 1892 (facsimile)
Primary Maker: Edmond Johnson



Title: Gold Dress Fastener
Date: circa 1892 (facsimile)
Primary Maker: Edmond Johnson



Title: Gold Dress Fastener
Date: circa 1892 (facsimile)
Primary Maker: Edmond Johnson

Title: Gold Dress Fastener
Date: circa 1892 (facsimile)
Primary Maker: Edmond Johnson



Title: Gold Dress Fastener
Date: circa 1892 (facsimile)
Primary Maker: Edmond Johnson



Title: Gold Dress Fastener
Date: circa 1892 (facsimile)
Primary Maker: Edmond Johnson



Title: Gold Dress Fastener
Date: circa 1892 (facsimile)
Primary Maker: Edmond Johnson



Title: Gold Dress Fastener
Date: circa 1892 (facsimile)
Primary Maker: Edmond Johnson



Title: Gold Dress Fastener
Date: circa 1892 (facsimile)
Primary Maker: Edmond Johnson



Title: Gold Dress Fastener
Date: circa 1892 (facsimile)
Primary Maker: Edmond Johnson



Title: Gold Dress Fastener
Date: circa 1892 (facsimile)
Primary Maker: Edmond Johnson



Title: Gold Gorget
Date: circa 1892 (facsimile)
Primary Maker: Edmond Johnson



Title: Gold Gorget
Date: circa 1892 (facsimile)
Primary Maker: Edmond Johnson



Title: Gold Gorget
Date: circa 1892 (facsimile)
Primary Maker: Edmond Johnson



Title: Gold Heart-Shaped Bulla
Date: circa 1892 (facsimile)
Primary Maker: Edmond Johnson



Title: Gold Lunula
Date: circa 1892 (facsimile)
Primary Maker: Edmond Johnson



Title: Gold Lunula
Date: circa 1892 (facsimile)
Primary Maker: Edmond Johnson



Title: Gold Lunula
Date: circa 1892 (facsimile)
Primary Maker: Edmond Johnson



Title: Gold Lunula
Date: circa 1892 (facsimile)
Primary Maker: Edmond Johnson



Title: Gold Lunula
Date: circa 1892 (facsimile)
Primary Maker: Edmond Johnson



Title: Gold Lunula
Date: circa 1892 (facsimile)
Primary Maker: Edmond Johnson



Title: Gold Lunula
Date: circa 1892 (facsimile)
Primary Maker: Edmond Johnson



Title: Gold Lunula
Date: circa 1892 (facsimile)
Primary Maker: Edmond Johnson



Title: Gold Lunula
Date: circa 1892 (facsimile)
Primary Maker: Edmond Johnson



Title: Gold Penannular Ring
Date: circa 1892 (facsimile)
Primary Maker: Edmond Johnson



Title: Gold Penannular Ring
Date: circa 1892 (facsimile)
Primary Maker: Edmond Johnson



Title: Gold Penannular Ring
Date: circa 1892 (facsimile)
Primary Maker: Edmond Johnson



Title: Gold Penannular Ring
Date: circa 1892 (facsimile)
Primary Maker: Edmond Johnson



Title: Gold Penannular Ring
Date: circa 1892 (facsimile)
Primary Maker: Edmond Johnson



Title: Gold Penannular Ring
Date: circa 1892 (facsimile)
Primary Maker: Edmond Johnson



Title: Gold Penannular Ring
Date: circa 1892 (facsimile)
Primary Maker: Edmond Johnson



Title: Gold Penannular Ring
Date: circa 1892 (facsimile)
Primary Maker: Edmond Johnson



Title: Gold Penannular Ring
Date: circa 1892 (facsimile)
Primary Maker: Edmond Johnson



Title: Gold Penannular Ring
Date: circa 1892 (facsimile)
Primary Maker: Edmond Johnson



Title: Gold Penannular Ring
Date: circa 1892 (facsimile)
Primary Maker: Edmond Johnson



Title: Gold Penannular Ring
Date: circa 1892 (facsimile)
Primary Maker: Edmond Johnson



Title: Gold Penannular Ring
Date: circa 1892 (facsimile)
Primary Maker: Edmond Johnson



Title: Gold Penannular Ring
Date: circa 1892 (facsimile)
Primary Maker: Edmond Johnson



Title: Gold Penannular Ring
Date: circa 1892 (facsimile)
Primary Maker: Edmond Johnson



Title: Gold Penannular Ring
Date: circa 1892 (facsimile)
Primary Maker: Edmond Johnson



Title: Gold Penannular Ring
Date: circa 1892 (facsimile)
Primary Maker: Edmond Johnson



Title: Gold Penannular Ring
Date: circa 1892 (facsimile)
Primary Maker: Edmond Johnson

Title: Gold Penannular Ring

Date: circa 1892 (facsimile)
Primary Maker: Edmond Johnson



Title: Gold Penannular Ring

Date: circa 1892 (facsimile)
Primary Maker: Edmond Johnson



Title: Gold Penannular Ring

Date: circa 1892 (facsimile)
Primary Maker: Edmond Johnson



Title: Gold Penannular Ring

Date: circa 1892 (facsimile)
Primary Maker: Edmond Johnson



Title: Gold Penannular Ring

Date: circa 1892 (facsimile)
Primary Maker: Edmond Johnson



Title: Gold Penannular Ring

Date: circa 1892 (facsimile)
Primary Maker: Edmond Johnson



Title: Gold Penannular Ring

Date: circa 1892 (facsimile)
Primary Maker: Edmond Johnson



Title: Gold Penannular Ring

Date: circa 1892 (facsimile)
Primary Maker: Edmond Johnson



Title: Gold Penannular Ring

Date: circa 1892 (facsimile)
Primary Maker: Edmond Johnson



Title: Gold Penannular Ring
Date: circa 1892 (facsimile)
Primary Maker: Edmond Johnson



Title: Gold Penannular Ring
Date: circa 1892 (facsimile)
Primary Maker: Edmond Johnson



Title: Gold Penannular Ring
Date: circa 1892 (facsimile)
Primary Maker: Edmond Johnson



Title: Gold Penannular Ring
Date: circa 1892 (facsimile)
Primary Maker: Edmond Johnson



Title: Gold Ribbon Torque
Date: circa 1892 (facsimile)
Primary Maker: Edmond Johnson



Title: Gold Ribbon Torque
Date: circa 1892 (facsimile)
Primary Maker: Edmond Johnson



Title: Gold Ribbon Torque
Date: circa 1892 (facsimile)
Primary Maker: Edmond Johnson



Title: Gold Ribbon Torque
Date: circa 1892 (facsimile)
Primary Maker: Edmond Johnson



Title: Gold Ribbon Torque
Date: circa 1892 (facsimile)
Primary Maker: Edmond Johnson



Title: Gold Ribbon Torque

Date: circa 1892 (facsimile)
Primary Maker: Edmond Johnson



Title: Gold Ribbon Torque

Date: circa 1892 (facsimile)
Primary Maker: Edmond Johnson



Title: Guimou Garment Hook

Date: circa 4th - 3rd century B.C.E.
Medium: Cast bronze with silver and gold (?) inlay

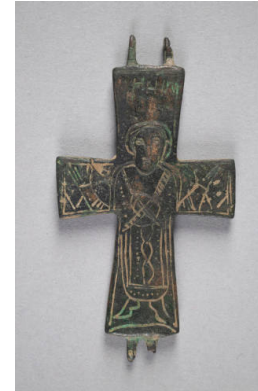


Title: Gu (Ku) (Ritual Wine Beaker)

Date: late 13th - early 12th century B.C.E.
Medium: Cast bronze

Title: Gu (Ku) (Wine Beaker)

Date: late 13th - 12th century B.C.E.
Medium: Cast bronze



Title: Half of a Pectoral Reliquary Cross: Saint John the Evangelist

Date: 9th - 12th century
Medium: Cast bronze with incised decoration



Title: Half of a Pectoral Reliquary Cross; The Virgin

Date: 9th - 12th century
Medium: Cast bronze with incised decoration



Title: Hand Pin

Date: circa 1892 (facsimile)
Primary Maker: Edmond Johnson



Title: Hand Pin or Hammer-Headed Pin

Date: circa 1892 (facsimile)
Primary Maker: Edmond Johnson



Title: Hand Pin or Hammer-Headed Pin
Date: circa 1892 (facsimile)
Primary Maker: Edmond Johnson



Title: Hand Pin or Hammer-Headed Pin
Date: circa 1892 (facsimile)
Primary Maker: Edmond Johnson



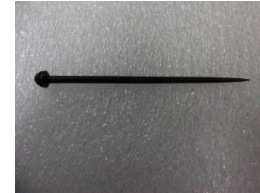
Title: Hand-Pin or Hammer-Headed Pin
Date: circa 1892 (facsimile)
Primary Maker: Edmond Johnson



Title: Hand Pin or Hammer-Headed Pin
Date: circa 1892 (facsimile)
Primary Maker: Edmond Johnson



Title: Hand Pin or Hammer-Headed Pin
Date: circa 1892 (facsimile)
Primary Maker: Edmond Johnson



Title: Hand Pin or Hammer-Headed Pin
Date: circa 1892 (facsimile)
Primary Maker: Edmond Johnson



Title: Hand Pin or Hammer-Headed Pin
Date: circa 1892 (facsimile)
Primary Maker: Edmond Johnson



Title: Hand Pin or Hammer-Headed Pin
Date: circa 1892 (facsimile)
Primary Maker: Edmond Johnson



Title: Hand Pin or Hammer-Headed Pin
Date: circa 1892 (facsimile)
Primary Maker: Edmond Johnson



Title: Hand Pin or Hammer-Headed Pin
Date: circa 1892 (facsimile)
Primary Maker: Edmond Johnson



Title: Hand Warmer
Date: late 19th or early 20th century
Primary Maker: Unknown Artist
Medium: Hammered and pierced brass



Title: Head of a Saint
Date: 11th century
Medium: Cloisonne enamel and gold



Title: Holy Rider Amulet
Date: 4th - 7th century
Medium: Incised bronze



Title: Holy Rider Amulet
Date: 4th - 7th century?
Medium: Incised bronze



Title: Horse Trapping for a Chariot, Boss (for Harness Decoration)
Date: circa 12th century B.C.E.
Medium: Cast bronze



Title: Horse Trappings for a Chariot, Cheek-piece (for a Snaffle)
Date: circa 12th century B.C.E.
Medium: Cast bronze



Title: Horse Trappings for a Chariot, Cross-Tube (for Harness Decoration)
Date: circa 12th century B.C.E.
Medium: Cast bronze

Title: Horse Trappings for a Chariot, Cross-Tube (for Harness Decoration)
Date: circa 12th century B.C.E.
Medium: Cast bronze



Title: Horse Trappings for a Chariot, Pair of Bosses (for Harness Decoration)

Date: circa 12th century B.C.E.
Medium: Cast bronze



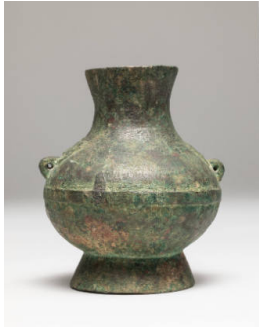
Title: Horse Trappings for a Chariot, Two-Part Bit (Snaffle)

Date: circa 12th century B.C.E.
Medium: Cast bronze



Title: Hunterston Brooch

Date: circa 1892 (facsimile)
Primary Maker: Edmond Johnson



Title: Hu Vase

Date: circa 1st century B.C.E.
Medium: Cast bronze

Title: Inkwell

Date: 1829
Primary Maker: Unknown Artist
Medium: Pewter

Title: Inkwell ("Pine Needle" pattern)

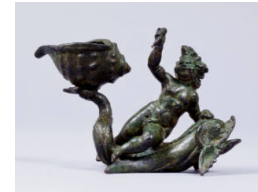
Date: circa 1902
Primary Maker: Tiffany Studios
Medium: Gilt cast bronze and stained (onyx) glass

Title: Inkwell ("Pine Needle" pattern)

Date: circa 1902
Primary Maker: Tiffany Studios
Medium: Gilt cast bronze and stained (onyx) glass

Title: Inkwell ("Pine Needle" pattern)

Date: circa 1902
Primary Maker: Tiffany Studios
Medium: Gilt cast bronze and stained (onyx) glass



Title: Inkwell: Putto on a Dolphin

Date: circa 1650 - 1675
Medium: Cast bronze



Title: Jue (Chueh) (Ritual Wine Vessel)

Date: late 13th - early 12th century B.C.E.

Medium: Cast bronze

Title: Keman (Altar Pendant)

Date: 1st half of 19th century

Medium: Gilt bronze

Title: Keman (Altar Pendant)

Date: 1st half of 19th century

Medium: Gilt bronze

Title: Kettle

Date: circa 1904

Primary Maker: Jan W. Eisenlöffel

Medium: Brass with wooden knob and wicker-bound handle



Title: Kilkenny Brooch

Date: circa 1892 (facsimile)

Primary Maker: Edmond Johnson



Title: Knife

Date: circa 12th century B.C.E.

Medium: Cast bronze

Title: Knife

Date: circa 12th century B.C.E.

Medium: Cast bronze

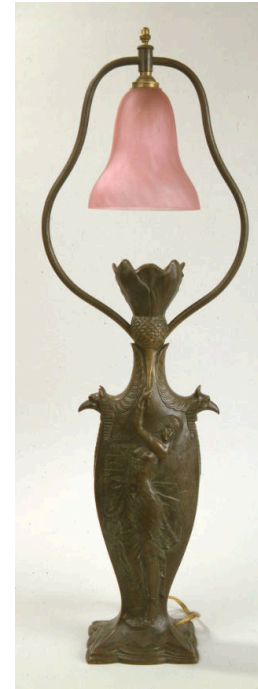


Title: Ladle

Date: circa 1800

Primary Maker: Joel Sayre

Medium: Silver



Title: Lamp

Date: circa 1900 - 1920

Primary Maker: Unknown

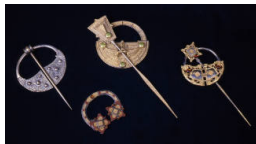
Artist

Medium: Patinated cast bronze with frosted pink glass shade

Title: Lamp Holder (?)

Date: n.d.

Medium: Unidentified metal



Title: Large Ardagh Brooch

Date: circa 1892 (facsimile)

Primary Maker: Edmond Johnson



Title: Letter Holder

Date: circa 1902

Primary Maker: Tiffany Studios

Medium: Gilt bronze with onyx stained glass

**Title: Letter Opener:
Crouching Panther**

Date: n.d.

Primary Maker: Anna Vaughn
Hyatt Huntington

Medium: Cast bronze

Title: Liberty

Date: 1907

Primary Maker: Augustus
Saint-Gaudens

Medium: Commemorative
medallion

Title: Lid (?)

Date: n.d.

Medium: Bronze with traces of
wood



Title: Lough Erne Shrine

Date: circa 1892 (facsimile)

Primary Maker: Edmond
Johnson



**Title: Louis-Philippe 1
and Marie-Amelie, King
and Queen of France**

Date: circa 1832

Primary Maker: Jean-Auguste
Barre

Medium: Cast bronze
medallion



**Title: Luan (chariot
jingle)**

Date: circa 5th - 1st century B.
C.E.

Medium: Cast bronze

Title: Mether

Date: circa 1892 (facsimile)

Primary Maker: Edmond
Johnson

Medium: Wood, brass collar at
base



Title: Mirror

Date: circa 1900

Primary Maker: Liberty & Co.,
Ltd., London

Medium: Beaten copper over
wood, enamel (blue) appliqué,
and mirror



Title: Mirror

Date: n. d.

Primary Maker: Unknown
Artist

Medium: Bronze



Title: Mirror (Kagami)
Date: late 14th - early 15th century
Primary Maker: Unknown Artist
Medium: Cast bronze



Title: Mirror with Decoration of Birds and Mythic Beasts
Date: 206 B.C.E. - 220 C.E.
Medium: Cast bronze



Title: Mirror with Lion and Grapevine Motif
Date: 618 - 907
Medium: Cast bronze



Title: Niuzhong Chime Bell
Date: circa 6th century B.C.E.
Medium: Mold-cast bronze



Title: Oil Lamp
Date: 4th - 5th century
Medium: Cast bronze



Title: Oil Lamp
Fragment: Cross
Date: 4th - 5th century
Medium: Bronze

Title: Ornamental Frieze
Date: n.d.
Primary Maker: Louis H. Sullivan
Medium: Gilded cast iron

Title: Ornamental Frieze
Date: n.d.
Primary Maker: Louis H. Sullivan
Medium: Gilded cast iron



Title: Ornamental Frieze
Date: n.d.
Primary Maker: Louis H. Sullivan
Medium: Cast gilded iron

Title: Ornamental Railing

Date: n.d.

Primary Maker: Louis H.
Sullivan

Medium: Iron

**Title: Ornamental Railing
(section of an elevator
screen)**

Date: n.d.

Primary Maker: Louis H.
Sullivan

Medium: Iron

**Title: Pair of
Candlesticks**

Date: circa 1750

Primary Maker: Unknown
Artist

Medium: Brass

**Title: Pair of
Candlesticks with
Matching Snuffer on
Stand**

Date: circa 1750 - 1770

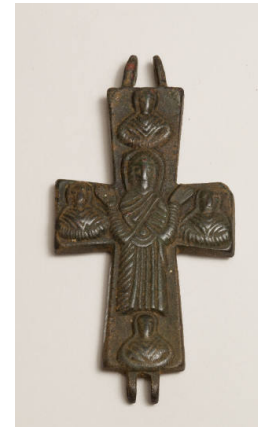
Medium: Brass



**Title: Pectoral Reliquary
Cross**

Date: 9th - 12th century

Medium: Cast copper (or high
copper-content bronze) with
incised decoration



**Title: Pectoral Reliquary
Cross: The Crucifixion
and The Virgin**

Date: 9th - 12th century

Medium: Cast bronze or brass



Title: Penannular Brooch

Date: circa 1892 (facsimile)

Primary Maker: Edmond
Johnson



Title: Penannular Brooch

Date: circa 1892 (facsimile)

Primary Maker: Edmond
Johnson



Title: Penannular Brooch

Date: circa 1892 (facsimile)

Primary Maker: Edmond
Johnson



Title: Penannular Brooch
Date: circa 1892 (facsimile)
Primary Maker: Edmond Johnson



Title: Penannular Brooch
Date: circa 1892 (facsimile)
Primary Maker: Edmond Johnson



Title: Penannular Brooch
Date: circa 1892 (facsimile)
Primary Maker: Edmond Johnson



Title: Penannular Brooch
Date: circa 1892 (facsimile)
Primary Maker: Edmond Johnson



Title: Penannular Brooch
Date: circa 1892 (facsimile)
Primary Maker: Edmond Johnson



Title: Penannular Brooch
Date: circa 1892 (facsimile)
Primary Maker: Edmond Johnson



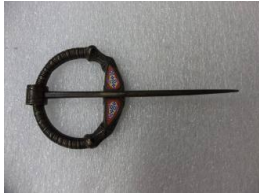
Title: Penannular Brooch
Date: circa 1892 (facsimile)
Primary Maker: Edmond Johnson



Title: Penannular Brooch
Date: circa 1892 (facsimile)
Primary Maker: Edmond Johnson



Title: Penannular Brooch
Date: circa 1892 (facsimile)
Primary Maker: Edmond Johnson



Title: Penannular Brooch
Date: circa 1892 (facsimile)
Primary Maker: Edmond Johnson



Title: Penannular Brooch
Date: circa 1892 (facsimile)
Primary Maker: Edmond Johnson



Title: Penannular Brooch
Date: circa 1892 (facsimile)
Primary Maker: Edmond Johnson



Title: Penannular Brooch
Date: circa 1892 (facsimile)
Primary Maker: Edmond Johnson



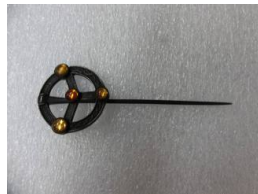
Title: Penannular Brooch
Date: circa 1892 (facsimile)
Primary Maker: Edmond Johnson



Title: Penannular Brooch
Date: circa 1892 (facsimile)
Primary Maker: Edmond Johnson



Title: Penannular Brooch
Date: circa 1892 (facsimile)
Primary Maker: Edmond Johnson



Title: Penannular Brooch
Date: circa 1892 (facsimile)
Primary Maker: Edmond Johnson



Title: Penannular Brooch
Date: circa 1892 (facsimile)
Primary Maker: Edmond Johnson



Title: Penannular Brooch
Date: circa 1892 (facsimile)
Primary Maker: Edmond Johnson



Title: Penannular Brooch
Date: circa 1892 (facsimile)
Primary Maker: Edmond Johnson



Title: Penannular Brooch from Virginia
Date: circa 1892 (facsimile)
Primary Maker: Edmond Johnson

Title: Pendant Cross
Date: 16th - 17th century?
Medium: Bronze or brass (?)

Title: Pendant Cross
Date: 6th century
Medium: Bronze

Title: Pendant Cross
Date: 12th - 14th century
Medium: Bronze

Title: Pendant Cross
Date: 14th - 18th century
Medium: Bronze



Title: Pendant: Mary Intercessor at Last Judgment?
Date: 16th - 18th century
Medium: Bronze



Title: Pendant: Trinity (after Rublyov icon)
Date: 16th - 18th century
Primary Maker: Unknown Artist
Medium: Bronze



Title: Pendant:
Unidentified Miracle of Archangel Michael
Date: 12th century
Medium: Cast bronze with traces of enamel

Title: Planter
Date: circa 1900
Primary Maker: Glasfabrik Joh. Loetz Witwe Klostermühle
Medium: Cast bronze, blown and trailed colored glass

Title: Planter
Date: n.d.
Primary Maker: Philippe-Laurent Roland
Medium: Cast bronze with pink marble and gilt bronze



Title: The Primrose (La Primvère) (after Alphonse Mucha)
Date: circa 1900
Primary Maker: Unknown Artist
Medium: Cast bronze plaque with gilt and polychrome decoration



Title: Pseudopenannular Brooch
Date: circa 1892 (facsimile)
Primary Maker: Edmond Johnson



Title: Pseudopenannular Brooch
Date: circa 1892 (facsimile)
Primary Maker: Edmond Johnson

Title: Push Plate with
Cast Iron Handle Added
Date: n.d.
Primary Maker: Louis H.
Sullivan
Medium: Painted cast iron



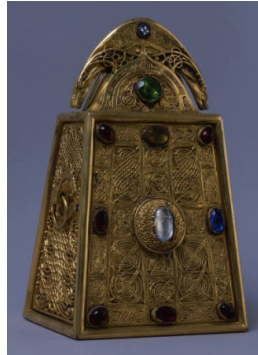
Title: Quaich
Date: 1884
Primary Maker: William
Mackie
Medium: Wrought silver with
gold, enamel, and semi-
precious stone decoration



Title: Queen's Brooch
Date: circa 1892 (facsimile)
Primary Maker: Edmond
Johnson



Title: Rabbit-Shaped
Water Dropper
Date: 17th - 18th century
Medium: Cast bronze



Title: Reliquary of St.
Patrick's Bell (after
medieval original by
Cudulig Ua Inmainen)
Date: circa 1891 - 1892
(facsimile, after circa 1100
original)
Primary Maker: Edmond
Johnson
Medium: Wrought and cast
unidentified base metal with
gilt, silver, and clear and
colored glass decoration

Title: Ribbon Torque
Date: circa 1892 (facsimile)
Primary Maker: Edmond
Johnson

Title: Ring-Pin
Date: circa 1892 (facsimile)
Primary Maker: Edmond
Johnson



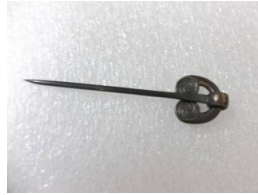
Title: Ring Pin
Date: circa 1892 (facsimile)
Primary Maker: Edmond
Johnson



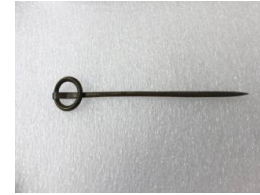
Title: Ring Pin
Date: circa 1892 (facsimile)
Primary Maker: Edmond
Johnson



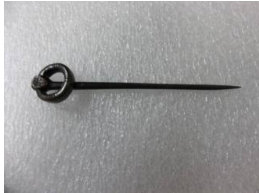
Title: Ring Pin
Date: circa 1892 (facsimile)
Primary Maker: Edmond Johnson



Title: Ring Pin
Date: circa 1892 (facsimile)
Primary Maker: Edmond Johnson



Title: Ring Pin
Date: circa 1892 (facsimile)
Primary Maker: Edmond Johnson



Title: Ring Pin
Date: circa 1892 (facsimile)
Primary Maker: Edmond Johnson



Title: Ring Pin
Date: circa 1892 (facsimile)
Primary Maker: Edmond Johnson



Title: Ring Pin
Date: circa 1892 (facsimile)
Primary Maker: Edmond Johnson

Title: Ring with "Hooks"
Date: n.d.
Medium: Bronze

Title: Ring (with Incised Cross)
Date: 6th - 8th century?
Medium: Bronze



Title: Sarcophagus Fragment with Imperial Portrait Medallions (of Marcus Aurelius)
Date: 2nd century
Medium: Lead



Title: Section from a Reliquary
Date: 15th century
Primary Maker: Unknown Artist
Medium: Cast, cut and twisted gilt bronze



Title: Set of Bookends
Date: circa 1906
Primary Maker: Tiffany Studios
Medium: Gilt bronze with cold painted decoration



Title: Sigismondo Pandolfo Malatesta (1417-1468), Lord of Rimini (1432-1463)
Date: 1446
Primary Maker: Matteo de' Pasti
Medium: Cast bronze medallion



Title: Silver Chocolate Pot
Date: 1790
Primary Maker: Samuel Howland
Medium: Silver with Ivory handle



Title: Small Ardagh Brooch
Date: circa 1892 (facsimile)
Primary Maker: Edmond Johnson



Title: Small Reliquary
Date: circa 1892 (facsimile)
Primary Maker: Edmond Johnson



Title: Snuff Box
Date: circa 1725 - 1750
Primary Maker: Unknown Artist
Medium: Silver-gilt, mother-of-pearl



Title: Socketed Axe Head
Date: circa 12th century B.C.E.
Medium: Cast bronze



Title: Spear Head
Date: n.d.
Medium: Bronze



Title: Spearhead

Date: circa 12th century B.C.E.

Medium: Cast bronze



Title: Spoon

Date: circa mid- 19th century

Primary Maker: Jehu & W.L.

Ward

Medium: Silver



Title: Spoon

Date: circa 1910

Primary Maker: Kalo Shop

Medium: Wrought silver with semiprecious cabachon



Title: Spoon

Date: circa 1903 - 1904

Primary Maker: Charles

Rennie Mackintosh

Medium: Silver electroplate



Title: Spoon

Date: circa 1903 - 1904

Primary Maker: Charles

Rennie Mackintosh

Medium: Silver electroplate



Title: Spoon

Date: circa 1903 - 1904

Primary Maker: Charles

Rennie Mackintosh

Medium: Silver electroplate

**Title: Stamp Box
("Zodiac" pattern)**

Date: circa 1902

Primary Maker: Tiffany Studios

Medium: Gilt cast bronze with cold-painted decoration

Title: St. Patrick's Bell

Date: circa 1891 - 1892

(facsimile, after circa 5th -
century or later original)

Primary Maker: Edmond
Johnson

Title: Strigil

Date: circa 5th century B.C.E.

Medium: Bronze



Title: Sugar Bowl and Shovel

Date: circa 1880

Primary Maker: Christopher Dresser

Medium: Silver-plate with engraved decoration and ebony handles

Title: Sugar Shaker

Date: circa 1750

Primary Maker: Unknown

Artist

Medium: Brass

Title: Sugar Tongs

Date: 1799 - 1800

Primary Maker: Unknown

Artist

Medium: Silver



Title: Sunflower Pin

Date: circa 1892 (facsimile)

Primary Maker: Edmond Johnson

Title: Sunflower Pin

Date: circa 1892 (facsimile)

Primary Maker: Edmond Johnson

Title: Surtout (basket decorated with garlands and grapes)

Date: n.d.

Primary Maker: Pierre-Philippe Thomire

Medium: Gilt cast bronze



**Title: Table Centerpiece
(Surtout de table): Two
Dancing Maidens and a
Youth**

Date: n.d.

Primary Maker: Pierre-
Philippe Thomire

Medium: Gilt cast bronze

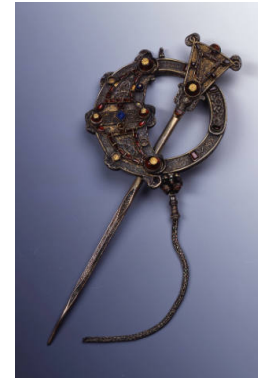


Title: Table Spoon

Date: circa 1785 - 1790

Primary Maker: Unknown
Artist

Medium: Silver



Title: The "Tara" Brooch

Date: circa 1891 - 1892
(facsimile, after 8th - century
original)

Primary Maker: Edmond
Johnson

Medium: Wrought and cast
copper alloy with silver-gilt?,
enamel, and colored glass
decoration



Title: Tea Pot

Date: circa 1905

Primary Maker: Frank Bruder

Medium: Hammered silver
and carved ivory

Title: Tea Pot

Date: circa 1930

Primary Maker: Bernard
Rice's Sons, Inc.

Medium: Silver-plated metal
with raffia wrapped handle

Title: Tea Service

Date: circa 1920

Primary Maker: Unknown
Artist

Medium: Wrought copper,
brass and wood

**Title: Tea Service:
Creamer**

Date: circa 1920

Primary Maker: Unknown
Artist

Medium: Wrought copper and
brass

**Title: Tea Service:
Creamer**

Date: 1924 (design,
manufactured at the Weimar
Bauhaus in 1924 or 1925 or at
the Dessau

Primary Maker: Marianne
Brandt

Medium: Hand-wrought
sterling silver and ebony
(replacement handle)

**Title: Tea Service: Sugar
Bowl**

Date: circa 1920

Primary Maker: Unknown
Artist

Medium: Wrought copper and
brass

**Title: Tea Service: Sugar
Bowl**

Date: 1924 (design,
manufactured at the Weimar
Bauhaus in 1924 or 1925 or at
the Dessau

Primary Maker: Marianne
Brandt

Medium: Hand-wrought
sterling silver



**Title: Tea Service: Tea
Infuser (Pot)**

Date: 1924 (design,
manufactured at the Bauhaus
between 1924 and 1929)

Primary Maker: Marianne
Brandt

Medium: Hand-wrought
sterling silver and ebony



**Title: Tea Service: Tea
Infuser (Pot), Creamer,
Sugar Bowl, and Tray**

Date: 1924 (design,
manufactured at the Weimar
Bauhaus in 1924 or 1925 or at
the Dessau

Primary Maker: Marianne
Brandt

Medium: Hand-wrought
sterling silver (tea infuser and
creamer also with ebony)

**Title: Tea Service: Tea
Pot with Lid**

Date: circa 1920

Primary Maker: Unknown
Artist

Medium: Wrought copper,
brass and wood

Title: Tea Service: Tray

Date: 1924 (design,
manufactured at the Weimar
Bauhaus in 1924 or 1925 or at
the Dessau

Primary Maker: Marianne
Brandt

Medium: Hand-wrought
sterling silver

**Title: Tea Service: Water
Kettle with Lid**

Date: circa 1920

Primary Maker: Unknown
Artist

Medium: Wrought copper,
brass and wood

Title: Tea Water Kettle
Date: circa 1905
Primary Maker: Frank Bruder
Medium: Hand-wrought silver and carved ivory



Title: Thistle Brooch
Date: circa 1892 (facsimile)
Primary Maker: Edmond Johnson



Title: Three-Lobed Brooch
Date: circa 1892 (facsimile)
Primary Maker: Edmond Johnson



Title: Three-Lobed Brooch
Date: circa 1892 (facsimile)
Primary Maker: Edmond Johnson



Title: Tongs
Date: circa 1800 - 1810
Primary Maker: Unknown Artist
Medium: Silver, rosettes on nippers



Title: Top of a Thymiaterion
Date: 4th - 3rd century B.C.E.
Medium: Bronze



Title: Tortoise Brooch
Date: circa 1892 (facsimile)
Primary Maker: Edmond Johnson



Title: Tortoise Brooch
Date: circa 1892 (facsimile)
Primary Maker: Edmond Johnson

Title: 'T' Plate
Date: n.d.
Primary Maker: Louis H. Sullivan
Medium: Stamped copper

Title: 'T' Plate

Date: n.d.

Primary Maker: Louis H. Sullivan

Medium: Stamped copper

Title: Tray

Date: circa 1910

Primary Maker: Unknown Artist

Medium: Brass

Title: Tray

Date: circa 1902

Primary Maker: Jan W. Eisenlöffel

Medium: Brass



Title: Tray

Date: late 19th - early 20th century

Primary Maker: Unknown Artist

Medium: Hammered metal



Title: Tray

Date: late 19th - early 20th century

Primary Maker: J.P. Kayser & Sohn

Medium: Cast pewter



Title: Tray with Fish Motif

Date: late 19th - early 20th century

Primary Maker: J.P. Kayser & Sohn

Medium: Cast pewter



Title: Tray with Two Women

Date: n.d.

Primary Maker: James W. Tufts

Medium: Silver

Title: Triptych: The Deisis (Intercession at the Last Judgement)

Date: possibly 17th though 19th century

Primary Maker: Unknown Artist

Medium: Brass (or bronze) with blue enamel



Title: Tsuba (Decorative Openwork Design)

Date: 18th - 19th century

Medium: Bronze



Title: Tsuba (Decorative Openwork Design)
Date: 18th - 19th century
Medium: Bronze



Title: Tsuba (Openwork Flower Design)
Date: 18th - 19th century
Medium: Bronze



Title: Tsuba (Relief of Mountain, Incised Waterfall and Stream)
Date: 18th - 19th century
Medium: Bronze with gilt



Title: Tsuba (Relief of Sitting Monkey)
Date: 18th - 19th century
Medium: Bronze with copper and gilt



Title: Tsuba (Relief of Two Figures in Landscape)
Date: 18th - 19th century
Medium: Bronze with copper gilt



Title: Tsuba (Relief on Monkey in Tree)
Date: 18th - 19th century
Medium: Bronze with copper gilt



Title: Tsuba (Scalloped Edge)
Date: 18th - 19th century
Medium: Bronze



Title: Tudric Bowl
Date: n.d.
Primary Maker: Archibald Knox
Medium: Pewter



Title: Tudric Bowl
Date: n.d.
Primary Maker: Archibald Knox
Medium: Pewter



Title: Tun (T'un), Ferrule

Date: circa 770 - 265 B.C.E.

Medium: Cast bronze

**Title: Two Connected
Door Knobs**

Date: 1893 - 1894

Primary Maker: Louis H.
Sullivan

Medium: Painted cast iron

Title: University Brooch

Date: circa 1892 (facsimile)

Primary Maker: Edmond
Johnson



Title: Vase

Date: circa 1930

Primary Maker: Camille Fauré

Medium: Enameled and
silvered beaten copper



Title: Vase

Date: circa 1918 - 1920

Primary Maker: Josef
Hoffmann

Medium: Hand-wrought brass



Title: Vase

Date: 19th century (possibly
late)

Medium: Cast bronze



**Title: Vase Fragment:
Handle with Head of a
Satyr**

Date: n.d.

Medium: Bronze



**Title: Vessel Fragment:
Foot of a Cista**

Date: n.d.

Medium: Bronze



**Title: Vessel Fragment:
Foot of a Cista**

Date: n.d.

Medium: Bronze



**Title: Vessel Fragment:
Handle Fragment**
Date: n.d.
Medium: Bronze

**Title: Vessel Fragment:
Wall and Rim of a Bowl**
Date: n.d.
Medium: Hammered bronze
with incised inscription



Title: Water Dropper
Date: n.d.
Medium: Wrought brass and
copper



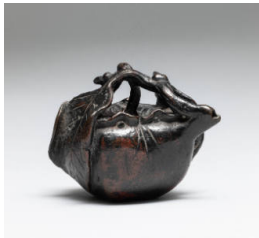
Title: Water Dropper
Date: n.d.
Medium: Wrought silver



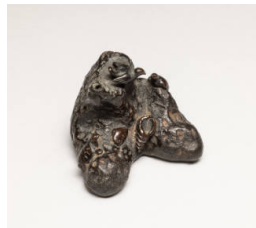
Title: Water Dropper
Date: n.d.
Medium: Wrought gilt copper



Title: Water Dropper
Date: n.d.
Medium: Wrought copper



**Title: Water Dropper in
the Shape of a Peach
with Leaves**
Date: 17th - 18th century
Medium: Cast bronze



**Title: Water Dropper in
the Shape of a Rock with
Birds and Shells**
Date: 17th - 18th century
Medium: Cast bronze



Title: Weight
Date: n.d.
Medium: Bronze