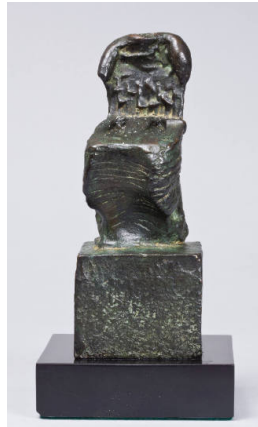


Basic Report



Title: Draped Reclining Figure
Date: 1951
Primary Maker: Henry Moore
Medium: Etching



Title: Draped Seated Figure: Headless
Date: 1961
Primary Maker: Henry Moore
Medium: Cast bronze



Title: Family Group
Date: 1945
Primary Maker: Henry Moore
Medium: Cast bronze

Title: Five Studies
Date: 1948
Primary Maker: Henry Moore
Medium: Pen and ink, crayon and watercolor on wove paper



Title: Four-Piece Composition
Date: 1934 (reinforced concrete edition); 1962 (bronze edition)
Primary Maker: Henry Moore
Medium: Cast bronze



Title: Four Studies: Family Groups
Date: 1944
Primary Maker: Henry Moore
Medium: Pencil, crayon, wash and gouache on laid paper



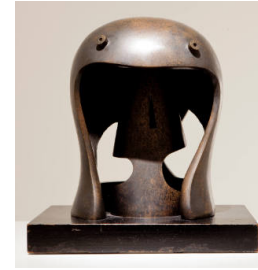
Title: Head and Shoulders

Date: 1935 (model, bronze cast 1960s)
Primary Maker: Henry Moore
Medium: Cast bronze



Title: Heads

Date: 1939
Primary Maker: Henry Moore
Medium: Crayon, pen and ink and pastel wash on wove paper



Title: Helmet Head No. 1

Date: 1950 (lead original, bronze edition 1960)
Primary Maker: Henry Moore
Medium: Cast bronze affixed to original painted wooden base



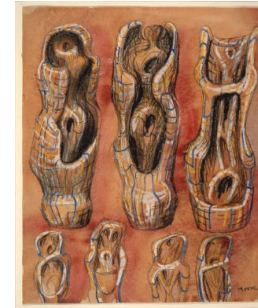
Title: Ideas for Sculpture

Date: 1936
Primary Maker: Henry Moore
Medium: Pencil, charcoal, and pen and brush and ink on wove paper



Title: Ideas for Sculpture: Four Studies of Reclining Figures, One Half Figure

Date: 1949
Primary Maker: Henry Moore
Medium: Pencil, pen and ink, crayon, and wash on wove paper



Title: Ideas for Sculpture: Internal/External Forms

Date: 1950
Primary Maker: Henry Moore
Medium: Pencil, crayon, wash and pastel wash on wove paper



Title: Ideas for Sculpture: Seven Seated Figures

Date: 1931
Primary Maker: Henry Moore
Medium: Pencil and pen and brush and ink on wove paper



Title: Ideas for Sculpture (Transformation Drawing)

Date: 1932
Primary Maker: Henry Moore
Medium: Pencil on wove paper

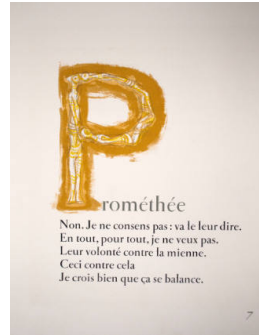


Title: (Illustration for Goethe's Prometheus) Head of Prometheus

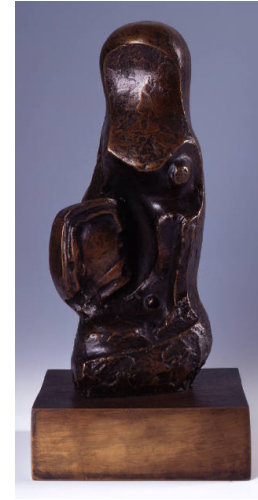
Date: 1950
Primary Maker: Henry Moore
Medium: Color lithograph on wove paper



Title: (Illustration for Goethe's Prometheus) Minerva, Prometheus and Pandora
Date: 1950
Primary Maker: Henry Moore
Medium: Color lithograph on wove paper



Title: Illustration for Goethe's Prometheus (Text With Ornamental Initial "P" Recto, Text Verso)
Date: 1950
Primary Maker: Henry Moore
Medium: Color lithograph on wove paper



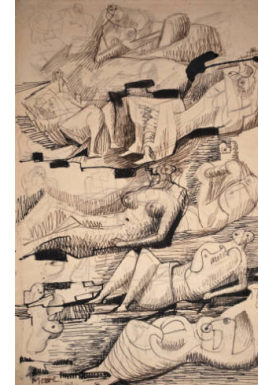
Title: Mother and Child: Round Head
Date: 1963
Primary Maker: Henry Moore
Medium: Cast bronze



Title: Mother and Child Studies
Date: 1933
Primary Maker: Henry Moore
Medium: Pencil, charcoal, pen and ink and watercolor on wove paper



Title: Mother and Child with Figure in a Room
Date: 1948
Primary Maker: Henry Moore
Medium: Pencil, crayon and wash on wove paper



Title: Reclining Figures: Ideas for Sculpture (recto); Listen (verso)
Date: circa 1939 (misdated later by the artist 1942) (recto); circa 1939 and/or 1958 (verso)
Primary Maker: Henry Moore
Medium: Pencil and pen and ink on wove paper (recto); pen and ink, crayon, and watercolor on wove paper (verso)



Title: Seated Figure (recto); Three Seated Figures in a Landscape (verso)
Date: 1950 - 1951
Primary Maker: Henry Moore
Medium: Pencil, crayon, gouache and wash on wove paper (recto and verso)



Title: Shelter Drawing
Date: 1941
Primary Maker: Henry Moore
Medium: Pencil, crayon, charcoal and wash on wove paper



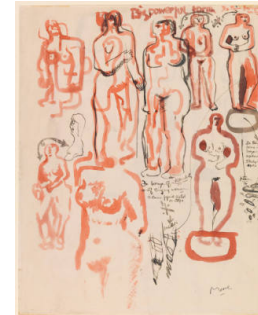
Title: Sketch Model for Reclining Figure
Date: 1945
Primary Maker: Henry Moore
Medium: Unglazed modeled earthenware



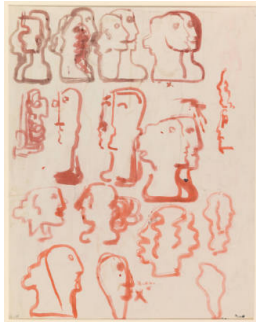
Title: Slow Form:
Tortoise
Date: 1962
Primary Maker: Henry Moore
Medium: Cast bronze



Title: Studies for Family
Groups and Two Seated
Figures (recto); Notes
on Sculpture (verso)
Date: 1949
Primary Maker: Henry Moore
Medium: Pencil, pen and ink,
crayon and wash on wove
paper (recto); pencil on wove
paper (verso)



Title: Studies for
Sculpture: Big Powerful
Forms (recto); Head
Studies (verso)
Date: 1929
Primary Maker: Henry Moore
Medium: Pen and brush and
ink on wove paper (recto);
brush and ink on wove paper
(verso)



Title: Studies for
Sculpture: Big Powerful
Forms (recto); Head
Studies (verso)
Date: 1929
Primary Maker: Henry Moore
Medium: Pen and brush and
ink on wove paper (recto);
brush and ink on wove paper
(verso)



Title: Studies for Two
Reclining Figures
(recto); Two Ideas for
Sculpture: Organic
Columns (verso)
Date: 1956
Primary Maker: Henry Moore
Medium: Pencil, pen and ink
on wove paper (recto); pencil
and crayon on wove paper
(verso)



Title: Title Unknown
Date: 1951
Primary Maker: Henry Moore
Medium: Etching



Title: Two Figures
Date: 1939
Primary Maker: Henry Moore
Medium: Pencil, charcoal, pen
and ink, and pastel on wove
paper



Title: Two Figures in a
Landscape (recto);
Composition-Figure
(verso)
Date: 1950
Primary Maker: Henry Moore
Medium: Pencil, pen and ink,
crayon and wash on wove
paper (recto); pencil on wove
paper (verso)



Title: Two-Piece
Reclining Figure:
Maquette No. 3
Date: 1961
Primary Maker: Henry Moore
Medium: Cast bronze



Title: Two Reclining Figures

Date: 1928

Primary Maker: Henry Moore

Medium: Crayon and wash on wove paper



Title: Two Standing and One Seated Figure

Date: 1931

Primary Maker: Henry Moore

Medium: Pencil, crayon, pen and brush and ink on thin wove paper

Title: Two Standing Figures

Date: 1949

Primary Maker: Henry Moore

Medium: Silkscreen on cotton



Title: Two Studies for Family Groups

Date: 1944

Primary Maker: Henry Moore

Medium: Pencil, crayon and wash on laid paper

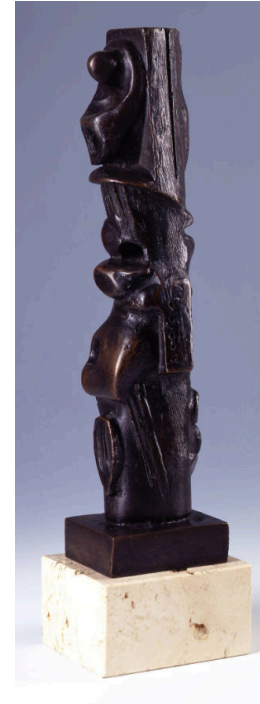


Title: Upright Motive: Maquette No. 4

Date: 1955

Primary Maker: Henry Moore

Medium: Cast bronze

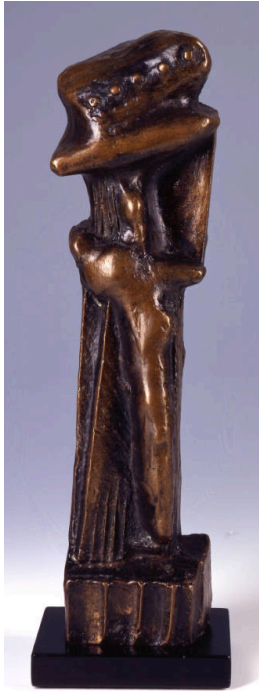


Title: Upright Motive: Maquette No. 5

Date: 1955

Primary Maker: Henry Moore

Medium: Cast bronze



Title: Upright Motive:
Maquette No. 8
Date: 1955
Primary Maker: Henry Moore
Medium: Cast bronze



Title: Working Model for
Reclining Figure
(Internal and External
Forms)
Date: 1951
Primary Maker: Henry Moore
Medium: Cast bronze