

# Basic Report

---



**Title:** Four woodcuts in Der Anbruch  
**Date:** 1919  
**Primary Maker:** Emil Nolde  
**Medium:** Electrotpe cast from original woodcuts



**Title:** Head of a Girl (Madchenbildnis)  
**Date:** 1924  
**Primary Maker:** Emil Nolde  
**Medium:** Etching



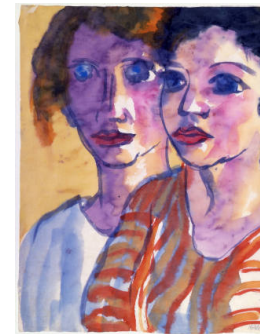
**Title:** Head of a Woman (Frauenkopf)  
**Date:** 1906  
**Primary Maker:** Emil Nolde  
**Medium:** Etching



**Title:** Head with Pipe (Self-Portrait) (Kopf mit Pfeiffer [Selbstbildnis])  
**Date:** 1907  
**Primary Maker:** Emil Nolde  
**Medium:** Transfer lithograph on wove paper



**Title:** Tingel-Tangel II  
**Date:** 1907 (stone, this impression from 1915 edition)  
**Primary Maker:** Emil Nolde  
**Medium:** Transfer lithograph (black) overprinted in two colors on wove paper



**Title:** Two Girls  
**Date:** circa 1929  
**Primary Maker:** Emil Nolde  
**Medium:** Watercolor on thin laid paper