

Basic Report



Title: Akasaka, Inn with Serving-Maids (Akasaka, ryosha shofu no zu)

Date: circa 1833 - 1834

Primary Maker: And Hiroshige (/)

Medium: Color woodblock print with mica (oban)



Title: Arimatsu Tie-dyed Fabrics, a Famous Product of Narumi (, Narumi, meibutsu Arimatsu-shibori), no. 41 from the series Fifty-Three Stations of the Tokkaido Road ()

Date: circa 1833 - 1834

Primary Maker: And Hiroshige (/)

Medium: Color woodblock print (oban)



Title: The Armor-hanging Pine at Hakkeizaka

Date: 1856

Primary Maker: And Hiroshige (/)

Medium: Color woodblock print



Title: Benten Shrine, Inokashina Pond

Date: 1856

Primary Maker: And Hiroshige (/)

Medium: Color woodblock (oban)

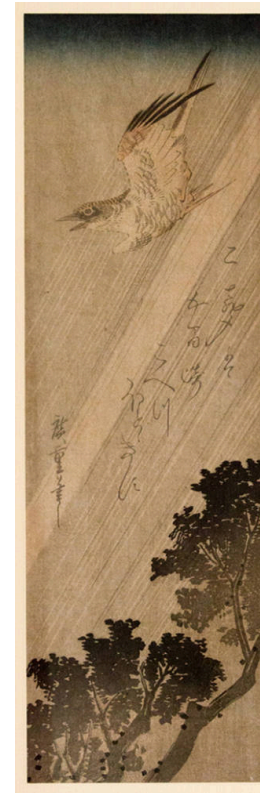


Title: Clear Weather after Snow at Massaki (Massaki yukibare no zu), from the series Famous Places in the Eastern Capital (Tôto meisho)

Date: 1832 - 1838

Primary Maker: And Hiroshige (/)

Medium: Woodblock print



Title: Cuckoo Flying Through the Rain

Date: early 1830s

Primary Maker: And Hiroshige (/)

Medium: Woodblock print



Title: Eight Views of Kanazawa at Night (Buy Kanazawa hassh yakei)

Date: 1857

Primary Maker: And Hiroshige (/)

Medium: Triptych of color woodblocks (oban)



Title: Fifty-three Stations of the Tokaido (Tokaido Gojusan-tsugi no uchi): Clear Weather after Snow (Kameyama, yukibare)

Date: 1833 - 1834

Primary Maker: And Hiroshige (/)

Medium: Color woodblock (oban) on thin wove paper mounted on heavy wove paper



Title: Fifty-three Stations of the Tokaido (Tokaido Gojusan-tsugi no uchi): Dusk Scene (Numazu, tasogare-zu)

Date: 1833/1834

Primary Maker: And Hiroshige (/)

Medium: Color woodblock (oban) on thin wove paper mounted on heavy wove paper



Title: Fuchu, Abe River (Fuchu, Abe-kawa)

Date: circa 1833 - 1834

Primary Maker: And Hiroshige (/)

Medium: Color woodblock print (oban)



Title: Fukagawa Susaki and Jmantsubo (Fukagawa Susaki Jmantsubo)

Date: 1857

Primary Maker: And Hiroshige (/)

Medium: Color woodblock (oban) on thin wove paper



Title: Fukuroi, Tea Stall (Fukuroi, dejaya no zu)

Date: circa 1833 - 1834

Primary Maker: And Hiroshige (/)

Medium: Color woodblock print (oban)



Title: Futakawa, Monkey Plateau (Futakawa, Saruga-baba)

Date: circa 1833 - 1834

Primary Maker: And Hiroshige (/)

Medium: Color woodblock print (oban)



Title: Hara, from the series Fifty-three Stations of the Tkaid Road (Tkaid gojsan tsugi), also known as the Kyka Tkaid

Date: 1840 - 1842

Primary Maker: And Hiroshige (/)

Medium: Woodblock print



Title: Harimaze Sheet

Date: 1847 - 1852

Primary Maker: And Hiroshige (/)

Medium: Woodblock print

Title: Hashiba Ferry and the Tile Kins, Sumida River

Date: 1857

Primary Maker: And Hiroshige (/)

Medium: Color woodblock print (oban)

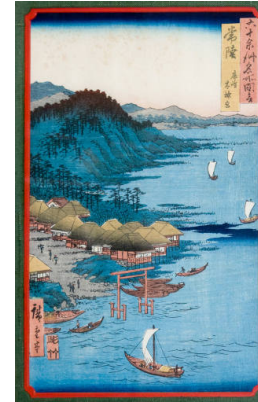


Title: Hiratsuka, Nawate Road (Hiratsuka, Nawate-michi)

Date: circa 1833 - 1834

Primary Maker: And Hiroshige (/)

Medium: Color woodblock print (oban)



Title: Hitachi Province: Daijingû Shrine in Kashima (Hitachi, Kashima, Daijingû), from the series Famous Places in the Sixty-odd Provinces [of Japan] ([Dai Nihon] Rokujûyoshû meisho zue)

Date: 1853

Primary Maker: And Hiroshige (/)

Medium: Woodblock print



Title: Ise Province: Mount Asama, Teahouse on the Mountain Pass (Ise, Asamayama, Tôge no chaya), from the series Famous Places in the Sixty-odd Provinces [of Japan] ([Dai Nihon] Rokujûyoshû meisho zue)

Date: 1853

Primary Maker: And Hiroshige (/)

Medium: Woodblock print



Title: Kakegawa, from the series Fifty-three Stations of the Tôkaidô Road (Tôkaidô gojûsan tsugi), also known as the Kyôka Tôkaidô

Date: 1840 - 1842

Primary Maker: And Hiroshige (/)

Medium: Woodblock print



Title: Kanagawa, Hilltop View (Kanagawa, Dai-no-kei)

Date: circa 1833 - 1834

Primary Maker: And Hiroshige (/)

Medium: Color woodblock print (oban)



Title: Kinryzan Temple, Asakusa (Asakusa Kinryûzan) (from the series One Hundred Famous Views of Edo - Meisho Edo hyakkei)
Date: 1856
Primary Maker: And Hiroshige (/)
Medium: Woodblock print



Title: Koume Embankment
Date: 1857
Primary Maker: And Hiroshige (/)
Medium: Color woodblock (oban)



Title: Minakuchi, Famed Pickles (Minakuchi, Sanjo-ohashi)
Date: circa 1833 - 1834
Primary Maker: And Hiroshige (/)
Medium: Color woodblock print (oban)



Title: Mishima: First Gate of the Shrine of Mishima Daimyjin (Mishima, Mishima Daimyjin Ichi no torii) (No. 12 from the series Famous Sights of the Fifty-three Stations - Gojsan tsugi meisho zue- also known as the Vertical Tkaid)
Date: 1855
Primary Maker: And Hiroshige (/)
Medium: Woodblock print



Title: Mishima: Morning Mist (Mishima, asagiri)
Date: 1833/1834
Primary Maker: And Hiroshige (/)
Medium: Color woodcut on thin wove paper



Title: Miya, Atsuta Festival (Miya, Atsuta shinji)
Date: circa 1833 - 1834
Primary Maker: And Hiroshige (/)
Medium: Color woodblock print (oban)



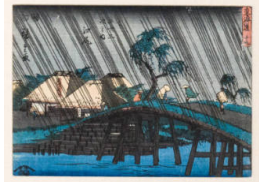
Title: Mount Atago, Shiba
Date: 1857
Primary Maker: And Hiroshige (/)
Medium: Color woodblock print



Title: No. 8, Hiratsuka: Ferry on Banyû River and Distant View of Mount Ôyama (Hiratsuka, Banyûgawa funewatashi Ôyama enbô), from the series Famous Sights of the Fifty-three Stations (Gojûsan tsugi meisho zue), also known as the Vertical Tôkaidô
Date: 1855
Primary Maker: And Hiroshige (/)
Medium: Woodblock print



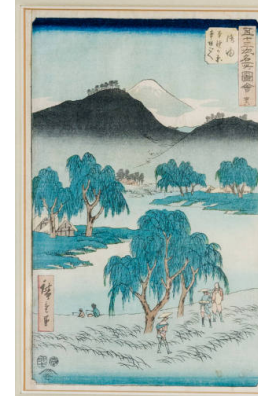
Title: No. 17 - Yui: Satta Pass and Kurasawa Station (Satta tôge, Kurasawa tateba), from the series The Tôkaidô Road - The Fifty-three Stations (Tôkaidô - Gojûsan tsugi no uchi)
Date: circa 1852
Primary Maker: And Hiroshige (/)
Medium: Woodblock print



Title: No. 19 - Ejiri: Koyoshida Bridge (Koyoshida no hashi), from the series The Tôkaidô Road - The Fifty-three Stations (Tôkaidô - Gojûsan tsugi no uchi)
Date: circa 1852
Primary Maker: And Hiroshige (/)
Medium: Woodblock print



Title: No. 28, Fukuroi: Famous Tôtômi Kites (Fukuroi, meibutsu Enshû tako), from the series Famous Sights of the Fifty-three Stations (Gojûsan tsugi meisho zue), also known as the Vertical Tôkaidô
Date: 1855
Primary Maker: And Hiroshige (/)
Medium: Woodblock print



Title: No. 36, Goyu: Motono-ga-hara and Motozaka Pass (Goyû, Motono-ga-hara Motozaka goe), from the series Famous Sights of the Fifty-three Stations (Gojûsan tsugi meisho zue), also known as the Vertical Tôkaidô
Date: 1855
Primary Maker: And Hiroshige (/)
Medium: Woodblock print



Title: No. 38 - Okazaki: Yahagi Bridge (Yahagi no hashi), from the series The Tkaid Road - The Fifty-three Stations (Tkaid - Gojsan tsugi no uchi)

Date: 1850 - 1851

Primary Maker: And Hiroshige (/)

Medium: Woodblock print



Title: No. 43 - Yokkaichi: Junction with the Side Road to the Shrine (Sangd oiwake), from the series The Tkaid Road - The Fifty-three Stations (Tkaid - Gojsan tsugi no uchi)

Date: 1850 - 1851

Primary Maker: And Hiroshige (/)

Medium: Woodblock print



Title: Numazu, from the series Fifty-three Stations of the Tkaid Road (Tkaid gojsan tsugi), also known as the Kyka Tkaid

Date: 1840 - 1842

Primary Maker: And Hiroshige (/)

Medium: Woodblock print



Title: Odawara: The Sakawa River (Odawara, Sakawagawa), third (?) state, from the series Fifty-three Stations of the Tōkaidō Road (Tōkaidō gojūsan tsugi no uchi), also known as the First Tōkaidō or Great Tōkaidō

Date: 1833 - 1834

Primary Maker: And Hiroshige (/)

Medium: Woodblock print



Title: Okazaki: Yahagi Bridge (Okazaki, Yahagi no hashi), from the series Fifty-three Stations of the Tōkaidō Road (Tōkaidō gojūsan tsugi), also known as the Kyōka Tōkaidō

Date: 1840 - 1842

Primary Maker: And Hiroshige (/)

Medium: Woodblock print



Title: Okitsu, Okitsu River (Okitsu, Okitsu-gawa)

Date: circa 1833 - 1834

Primary Maker: And Hiroshige (/)

Medium: Color woodblock print (oban)



Title: Ōtsu, from the series Fifty-three Stations of the Tōkaidō Road (Tōkaidō gojūsan tsugi), also known as the Kyōka Tōkaidō

Date: 1840 - 1842

Primary Maker: And Hiroshige (/)

Medium: Woodblock print



Title: The Sea off Satta in Suruga Province (Suruga Satta kaijō), from the series Thirty-six Views of Mount Fuji (Fuji sanjūrokkei)

Date: 1858

Primary Maker: And Hiroshige (/)

Medium: Woodblock print



Title: The Sea off Satta in Suruga Province (Suruga Satta kaijō) (from the series Thirty-six Views of Mount Fuji - Fuji sanjūrokkei)

Date: 1858

Primary Maker: And Hiroshige (/)

Medium: Woodblock print



Title: Shiba zojoji setchu (Snow at Zojo Temple in Shiba)

Date: early 1830s

Primary Maker: And Hiroshige (/)

Medium: Color woodblock (oban)

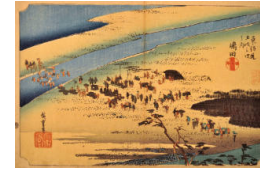


Title: Shichifukujin Takarabune no Zu (Takarabune with Seven Gods of Fortune)

Date: circa 1847 - 1852

Primary Maker: And Hiroshige (/)

Medium: Color woodblock print



Title: Shimada, Suruga Bank of Oi River (Shimada, Oi-gawa Sungan)

Date: circa 1833 - 1834

Primary Maker: And Hiroshige (/)

Medium: Color woodblock print (oban)



Title: Shimôsa Province: Chôshi Beach, Toura (Shimôsa, Chôshi no hama, Toura), from the series Famous Places in the Sixty-odd Provinces [of Japan] ([Dai Nihon] Rokujûyoshû meisho zue)

Date: 1853

Primary Maker: And Hiroshige (/)

Medium: Woodblock print



Title: Shinagawa, Sunrise: Daimyo's Departure (Shinagawa, hinode: shoko detachi)

Date: circa 1833 - 1834

Primary Maker: And Hiroshige (/)

Medium: Color woodblock print (oban)



Title: Shirasuga, View of Shiomi Slope (Shirasuga, Shiomi-zaka zu)

Date: circa 1833 - 1834

Primary Maker: And Hiroshige (/)

Medium: Color woodblock print (oban)



Title: Shirasuka: View of Shiomizaka (Shirasuka, Shiomizaka zu), from the series Fifty-three Stations of the Tôkaidô Road (Tôkaidô gojûsan tsugi no uchi), also known as the First Tôkaidô or Great Tôkaidô

Date: 1833 - 1834

Primary Maker: And Hiroshige (/)

Medium: Woodblock print



Title: Shono

Date: circa 1855

Primary Maker: And Hiroshige (/)

Medium: Color woodblock print (vertical oban)



Title: Shono

Date: circa 1855

Primary Maker: And Hiroshige (/)

Medium: Color woodblock print (vertical oban)



Title: Shno: Driving Rain
Date: circa 1833 - 1834
Primary Maker: And Hiroshige (/)
Medium: Color woodblock (oban) on thin wove paper



Title: Sudden Shower over Shin-Ôhashi Bridge and Atake (Ôhashi Atake no yûdachi), from the series One Hundred Famous Views of Edo (Meisho Edo hyakkei)
Date: 1857
Primary Maker: And Hiroshige (/)
Medium: Woodblock print



Title: Sunset at Seta
Date: circa mid- 19th century
Primary Maker: And Hiroshige (/)
Medium: Woodblock print



Title: Suwa Bluff, Nippori
Date: 1856
Primary Maker: And Hiroshige (/)
Medium: Color woodblock (oban)



Title: Takanawa
Date: circa 1840 - 1841
Primary Maker: And Hiroshige (/)
Medium: Color woodblock print (oban)



Title: Three Courtesans
Date: 1847 - 1848
Primary Maker: And Hiroshige (/)
Medium: Woodblock print, ink and color on paper



Title: Tô-tômi Province: Lake Hamana, Kanzan Temple in Horie and the Insasa-Horie Inlet (Tô-tômi, Hamana no umi, Horie Kanzanji, Inasa no Hosoe), from the series Famous Places in the Sixty-odd Provinces [of Japan] ([Dai Nihon] Rokujûyoshû meisho zue)
Date: 1853
Primary Maker: And Hiroshige (/)
Medium: Woodblock print



Title: Tsuchiyama: Spring Rain (Tsuchiyama, haru no ame), from the series Fifty-three Stations of the Tôkaidô Road (Tôkaidô gojûsan tsugi no uchi), also known as the First Tôkaidô or Great Tôkaidô
Date: 1833 - 1834
Primary Maker: And Hiroshige (/)
Medium: Woodblock print



Title: Untitled [plum blossoms]
Date: 1858
Primary Maker: And Hiroshige (/)
Medium: Color woodblock (oban)

Title: Yoshida, from the series Fifty-three Stations of the Tôkaidô Road (Tôkaidô gojûsan tsugi), also known as the Kyôka Tôkaidô
Date: 1840 - 1842
Primary Maker: And Hiroshige (/)
Medium: Woodblock print



Title: Yushima Tenjin Shrine
Date: circa 1840
Primary Maker: And Hiroshige (/)
Medium: Color woodblock