

# Basic Report

---



**Title:** Arabesque

**Date:** 1980

**Primary Maker:** Reuben Nakian

**Medium:** Sugarlift aquatint etching on tan chine collé on white wove paper with deckle edge

**Title:** Europa and Bull

**Date:** n.d.

**Primary Maker:** Reuben Nakian

**Medium:** Brush and ink on wove paper



**Title:** Leda and Swan

**Date:** circa 1980

**Primary Maker:** Reuben Nakian

**Medium:** Etching and aquatint in black ink on tan chine collé on white wove paper with deckle edge



**Title:** Leda and Swan

**Date:** circa 1980

**Primary Maker:** Reuben Nakian

**Medium:** Etching and aquatint in red ink on tan chine collé on off-white wove paper with deckle edge



**Title:** Nymph and Goat

**Date:** circa 1980

**Primary Maker:** Reuben Nakian

**Medium:** Drypoint on tan chine collé on thick off-white laid paper with deckle edge

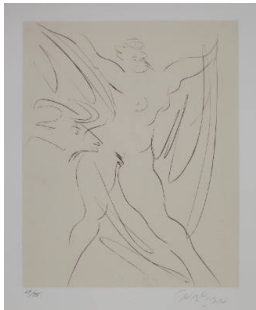


**Title:** Untitled

**Date:** 1958 - 1959

**Primary Maker:** Reuben Nakian

**Medium:** Wash and brush and ink on wove paper



**Title:** Untitled [Europa and Bull]

**Date:** 1979

**Primary Maker:** Reuben Nakian

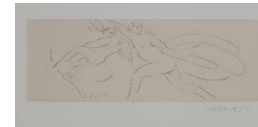
**Medium:** Drypoint on tan chine collé on white wove paper with deckle edge

**Title:** Untitled [Europa and the Bull]

**Date:** circa 1945

**Primary Maker:** Reuben Nakian

**Medium:** Cast bronze



**Title:** Untitled [Female, Cupid, and Bull]

**Date:** circa 1970s

**Primary Maker:** Reuben Nakian

**Medium:** Drypoint on tan chine collé on thick off-white laid paper with deckle edge



**Title: Untitled [Leda and Swan]**

**Date:** circa 1970s

**Primary Maker:** Reuben Nakian

**Medium:** Drypoint on tan chine collé on thick off-white laid paper with deckle edge



**Title: Untitled [Leda and Swan]**

**Date:** circa 1970s

**Primary Maker:** Reuben Nakian

**Medium:** Drypoint on tan chine collé on thick off-white laid paper with deckle edge



**Title: Untitled [Leda and Swan]**

**Date:** circa 1970s

**Primary Maker:** Reuben Nakian

**Medium:** Drypoint on tan chine collé on thick off-white laid paper with deckle edge



**Title: Untitled [Leda and Swan]**

**Date:** 1979

**Primary Maker:** Reuben Nakian

**Medium:** Drypoint on tan chine collé on white wove paper with deckle edge



**Title: Untitled [Leda and Swan]**

**Date:** circa 1980

**Primary Maker:** Reuben Nakian

**Medium:** Etching on tan chine collé on white wove paper with deckle edge



**Title: Untitled [Leda and Swan]**

**Date:** 1979

**Primary Maker:** Reuben Nakian

**Medium:** Drypoint on tan chine collé on white wove paper with deckle edge



**Title: Untitled [Leda and Swan]**

**Date:** circa 1970s

**Primary Maker:** Reuben Nakian

**Medium:** Drypoint on tan chine collé on white wove paper with deckle edge



**Title: Untitled [Nymph and Goat]**

**Date:** 1979

**Primary Maker:** Reuben Nakian

**Medium:** Drypoint on tan chine collé on white wove paper with deckle edge

**Title: Untitled [Partially Draped Standing Woman]**

**Date:** 1952

**Primary Maker:** Reuben Nakian

**Medium:** Modeled earthenware plus glued earthenware elements with partial polychrome decoration



**Title: Untitled [Reclining Woman]**

**Date:** n.d.

**Primary Maker:** Reuben Nakian

**Medium:** Aquatint etching on tan chine collé on white wove paper with deckle edge



**Title: Untitled [Standing Nude Woman and Satyr]**

**Date:** 1949

**Primary Maker:** Reuben Nakian

**Medium:** Modeled, carved, and incised earthenware with painted or slip decoration



**Title: Untitled [Woman and Animal Head]**

**Date:** 1979

**Primary Maker:** Reuben Nakian

**Medium:** Drypoint on tan chine collé on white wove paper with deckle edge



**Title: Untitled [Woman and Bull]**

**Date:** n.d.

**Primary Maker:** Reuben Nakian

**Medium:** Black ink on wove paper



**Title: Untitled [Woman and Bull]**

**Date:** n.d.

**Primary Maker:** Reuben Nakian

**Medium:** Black ink and ink wash on wove paper



**Title: Untitled [Woman and Cupid]**

**Date:** circa 1970s

**Primary Maker:** Reuben Nakian

**Medium:** Reverse aquatint etching on tan chine collé on thick off-white laid paper with deckle edge



**Title: Untitled [Woman and Goat]**

**Date:** circa 1970s

**Primary Maker:** Reuben Nakian

**Medium:** Drypoint on tan chine collé on thick off-white laid paper with deckle edge



**Title: Untitled [Woman and Satyr]**

**Date:** 1979

**Primary Maker:** Reuben Nakian

**Medium:** Drypoint on tan chine collé on white wove paper with deckle edge



**Title: Voyage to Crete**

**Date:** 1979

**Primary Maker:** Reuben Nakian

**Medium:** Drypoint on tan chine collé on white wove paper with deckle edge