

Basic Report



Title: Arabesque

Date: 1980

Primary Maker: Reuben Nakian

Medium: Sugarlift aquatint etching on tan chine collé on white wove paper with deckle edge



Title: Leda and Swan

Date: circa 1980

Primary Maker: Reuben Nakian

Medium: Etching and aquatint in black ink on tan chine collé on white wove paper with deckle edge

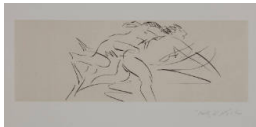


Title: Leda and Swan

Date: circa 1980

Primary Maker: Reuben Nakian

Medium: Etching and aquatint in red ink on tan chine collé on off-white wove paper with deckle edge

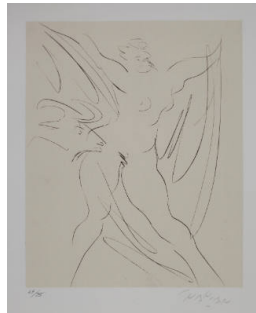


Title: Nymph and Goat

Date: circa 1980

Primary Maker: Reuben Nakian

Medium: Drypoint on tan chine collé on thick off-white laid paper with deckle edge

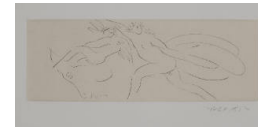


Title: Untitled [Europa and Bull]

Date: 1979

Primary Maker: Reuben Nakian

Medium: Drypoint on tan chine collé on white wove paper with deckle edge



Title: Untitled [Female, Cupid, and Bull]

Date: circa 1970s

Primary Maker: Reuben Nakian

Medium: Drypoint on tan chine collé on thick off-white laid paper with deckle edge



Title: Untitled [Leda and Swan]

Date: circa 1970s

Primary Maker: Reuben Nakian

Medium: Drypoint on tan chine collé on thick off-white laid paper with deckle edge

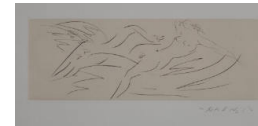


Title: Untitled [Leda and Swan]

Date: circa 1970s

Primary Maker: Reuben Nakian

Medium: Drypoint on tan chine collé on thick off-white laid paper with deckle edge



Title: Untitled [Leda and Swan]

Date: circa 1970s

Primary Maker: Reuben Nakian

Medium: Drypoint on tan chine collé on thick off-white laid paper with deckle edge



Title: Untitled [Leda and Swan]

Date: 1979

Primary Maker: Reuben Nakian

Medium: Drypoint on tan chine collé on white wove paper with deckle edge



Title: Untitled [Leda and Swan]

Date: circa 1980

Primary Maker: Reuben Nakian

Medium: Etching on tan chine collé on white wove paper with deckle edge



Title: Untitled [Leda and Swan]

Date: 1979

Primary Maker: Reuben Nakian

Medium: Drypoint on tan chine collé on white wove paper with deckle edge



Title: Untitled [Leda and Swan]

Date: circa 1970s

Primary Maker: Reuben Nakian

Medium: Drypoint on tan chine collé on white wove paper with deckle edge



Title: Untitled [Nymph and Goat]

Date: 1979

Primary Maker: Reuben Nakian

Medium: Drypoint on tan chine collé on white wove paper with deckle edge



Title: Untitled [Reclining Woman]

Date: n.d.

Primary Maker: Reuben Nakian

Medium: Aquatint etching on tan chine collé on white wove paper with deckle edge



Title: Untitled [Woman and Animal Head]

Date: 1979

Primary Maker: Reuben Nakian

Medium: Drypoint on tan chine collé on white wove paper with deckle edge



Title: Untitled [Woman and Cupid]

Date: circa 1970s

Primary Maker: Reuben Nakian

Medium: Reverse aquatint etching on tan chine collé on thick off-white laid paper with deckle edge



Title: Untitled [Woman and Goat]

Date: circa 1970s

Primary Maker: Reuben Nakian

Medium: Drypoint on tan chine collé on thick off-white laid paper with deckle edge



Title: Untitled [Woman and Satyr]
Date: 1979
Primary Maker: Reuben Nakian
Medium: Drypoint on tan chine collé on white wove paper with deckle edge



Title: Voyage to Crete
Date: 1979
Primary Maker: Reuben Nakian
Medium: Drypoint on tan chine collé on white wove paper with deckle edge