

Basic Report



Title: Ante-Bellum Plantation House at Tallahassee

Date: 1941 (negative, printed 1980)

Primary Maker: Walker Evans

Medium: Gelatin silver print



Title: Auto Graveyard

Date: 1941 (negative, printed 1980)

Primary Maker: Walker Evans

Medium: Gelatin silver print



Title: Boardinghouse - Birmingham, Alabama

Date: n.d.

Primary Maker: Walker Evans



Title: Breakfast Room at Belle Grove Plantation, White Chapel, Louisiana

Date: 1935 (negative, printed 1974)

Primary Maker: Walker Evans

Medium: Gelatin silver print, mounted



Title: Circus Winter Quarters, Sarasota

Date: 1941 (negative, printed 1980)

Primary Maker: Walker Evans

Medium: Gelatin silver print



Title: A Cypress Swamp

Date: 1941 (negative, printed 1980)

Primary Maker: Walker Evans

Medium: Gelatin silver print



Title: Dock Workers, Havana

Date: 1932 (negative, printed 1974)

Primary Maker: Walker Evans

Medium: Gelatin silver print, mounted



Title: Doorway, 204 W. 13th Street, New York City

Date: circa 1931 (negative, printed 1974)

Primary Maker: Walker Evans

Medium: Gelatin silver print, mounted



Title: East 14th Street

Date: October 1928 (negative, printed 1980)

Primary Maker: Walker Evans

Medium: Gelatin silver contact print



Title: Fishing from Public Bridge (near Sarasota)
Date: 1941 (negative, printed 1980)
Primary Maker: Walker Evans
Medium: Gelatin silver print



Title: Graybar Building
Date: 1929 (negative, printed 1980)
Primary Maker: Walker Evans
Medium: Gelatin silver contact print



Title: The Gulf of Mexico
Date: 1941 (negative, printed 1980)
Primary Maker: Walker Evans
Medium: Gelatin silver print



Title: Halsted Street, Chicago (Two Blind Street Musicians)
Date: 1941
Primary Maker: Walker Evans
Medium: Gelatin silver print



Title: Hart Crane's Hands
Date: circa 1929 - 1930
Primary Maker: Walker Evans
Medium: Gelatin silver print



Title: Kitchen Wall, Alabama Farmstead
Date: 1936 (negative, printed 1974)
Primary Maker: Walker Evans
Medium: Gelatin silver print, mounted



Title: License Photo Studio, New York
Date: 1934 (negative, printed 1980)
Primary Maker: Walker Evans
Medium: Gelatin silver print



Title: Maine Pump
Date: 1933 (negative, printed 1974)
Primary Maker: Walker Evans
Medium: Gelatin silver print, mounted



Title: Main Street, Saratoga Springs, NY
Date: 1931 (negative, printed 1974)
Primary Maker: Walker Evans
Medium: Gelatin silver print, mounted



Title: Minstrel Poster, Alabama
Date: 1935 (negative, printed 1974)
Primary Maker: Walker Evans
Medium: Gelatin silver print, mounted



Title: Municipal Trailer Camp (Sarasota)
Date: 1941 (negative, printed 1980)
Primary Maker: Walker Evans
Medium: Gelatin silver print



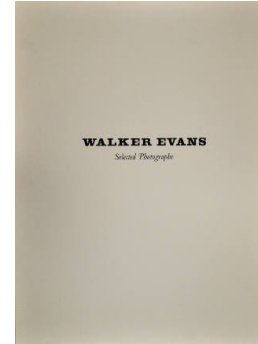
Title: Municipal Trailer Camp (Sarasota)
Date: 1941
Primary Maker: Walker Evans
Medium: Gelatin silver print



Title: New York City Skyscrapers, Abstract Detail
Date: circa 1929 (negative, printed 1980)
Primary Maker: Walker Evans
Medium: Gelatin silver contact print



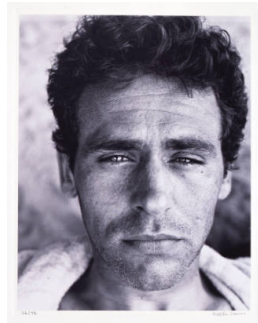
Title: Parked Car, Small Town, Main Street (Main St., Ossining, New York)
Date: 1932 (negative, printed 1974)
Primary Maker: Walker Evans
Medium: Gelatin silver print, mounted



Title: Portfolio: Walker Evans: Selected Photographs
Date: variable dates: 1930 - 1937 (negative, printed 1974)
Primary Maker: Walker Evans
Medium: Gelatin silver print, mounted



Title: Port of New York
Date: circa 1928 - 1929 (negative, printed 1980)
Primary Maker: Walker Evans
Medium: Gelatin silver contact print



Title: Portrait of James Agee
Date: 1937 (negative, printed 1974)
Primary Maker: Walker Evans
Medium: Gelatin silver print, mounted



Title: Postcard Display
Date: 1941 (negative, printed 1980)
Primary Maker: Walker Evans
Medium: Gelatin silver print



Title: Shoeshine Sign in Southern Town
Date: 1936 (negative, printed 1974)
Primary Maker: Walker Evans
Medium: Gelatin silver print, mounted



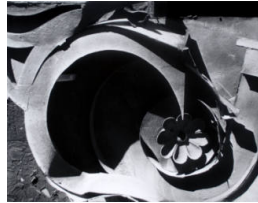
Title: Street Musicians, Chicago
Date: 1947
Primary Maker: Walker Evans
Medium: Gelatin silver print



Title: Tabby (Shell) Construction, St. Mary's, Georgia
Date: 1936 (negative, printed 1974)
Primary Maker: Walker Evans
Medium: Gelatin silver print, mounted



Title: Tin False Front Building, Moundville, Alabama
Date: 1936 (negative, printed 1974)
Primary Maker: Walker Evans
Medium: Gelatin silver print, mounted



Title: Tin Relic
Date: 1930 (negative, printed 1974)
Primary Maker: Walker Evans
Medium: Gelatin silver print, mounted



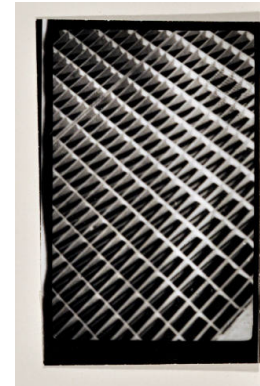
Title: Trailer in Camp (Sarasota)
Date: 1941 (negative, printed 1980)
Primary Maker: Walker Evans
Medium: Gelatin silver print



Title: Untitled (Abstraction: cobblestones)
Date: circa 1927 - 1930 (negative, printed 1980)
Primary Maker: Walker Evans
Medium: Gelatin silver contact print



Title: Untitled (Abstraction: detail of rope)
Date: circa 1928 - 1930 (negative, printed 1980)
Primary Maker: Walker Evans
Medium: Gelatin silver print



Title: Untitled (Abstraction: grating or grill)
Date: circa 1928 - 1929 (negative, printed 1980)
Primary Maker: Walker Evans
Medium: Gelatin silver contact print



**Title: Untitled
(Abstraction, New York)**
Date: 1929 (negative, printed 1980)
Primary Maker: Walker Evans
Medium: Gelatin silver contact print



**Title: Untitled
(Architectural Study, International Telephone Building)**
Date: October 1928
Primary Maker: Walker Evans
Medium: Gelatin silver contact print



**Title: Untitled
(Architectural Study, International Telephone Building)**
Date: October 1928 (negative, printed 1980)
Primary Maker: Walker Evans
Medium: Gelatin silver contact print



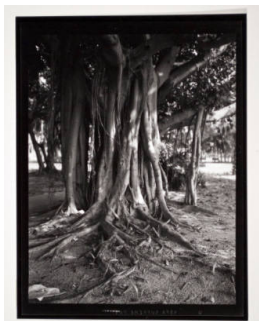
**Title: Untitled
(Architectural Study, New York)**
Date: circa 1928 - 1929 (negative, printed 1980)
Primary Maker: Walker Evans
Medium: Gelatin silver print



**Title: Untitled
(Architectural Study with Cranes and Cables)**
Date: circa 1928 - 1929 (negative, printed 1980)
Primary Maker: Walker Evans
Medium: Gelatin silver contact print



**Title: Untitled
(Architectural Study with Cranes and Cables)**
Date: circa 1928 - 1929
Primary Maker: Walker Evans
Medium: Gelatin silver contact print



Title: Untitled (Banyan trees)
Date: 1941 (negative, printed 1980)
Primary Maker: Walker Evans
Medium: Gelatin silver print



Title: Untitled (Blind Accordionist/Subway Portrait)
Date: 1938 - 1941
Primary Maker: Walker Evans
Medium: Gelatin silver print



Title: Untitled (Brooklyn Bridge)
Date: 1928 - 1929 (negative, printed 1980)
Primary Maker: Walker Evans
Medium: Gelatin silver contact print



Title: Untitled (Brooklyn Bridge)

Date: 1929 (negative, printed 1980)

Primary Maker: Walker Evans

Medium: Gelatin silver print



Title: Untitled (Brooklyn Bridge)

Date: 1929 (negative, printed 1980)

Primary Maker: Walker Evans

Medium: Gelatin silver contact print



Title: Untitled (Brooklyn Bridge)

Date: 1929 (negative, printed 1980)

Primary Maker: Walker Evans

Medium: Gelatin silver contact print



Title: Untitled (Brooklyn Bridge)

Date: 1929 (negative, printed 1980)

Primary Maker: Walker Evans

Medium: Gelatin silver contact print

Title: Untitled (Brooklyn Bridge)

Date: 1929 (negative, printed 1980)

Primary Maker: Walker Evans

Medium: Gelatin silver contact print



Title: Untitled (Brooklyn Bridge)

Date: 1929 (negative, printed 1980)

Primary Maker: Walker Evans

Medium: Gelatin silver contact print



Title: Untitled (Brooklyn Bridge)

Date: 1929 (negative, printed 1980)

Primary Maker: Walker Evans

Medium: Gelatin silver contact print



Title: Untitled (Brooklyn Bridge)

Date: 1929 (negative, printed 1980)

Primary Maker: Walker Evans

Medium: Gelatin silver contact print



Title: Untitled (Brooklyn Bridge)

Date: 1929 (negative, printed 1980)

Primary Maker: Walker Evans

Medium: Gelatin silver contact print



Title: Untitled (Brooklyn Bridge)

Date: 1929 (negative, printed 1980)

Primary Maker: Walker Evans

Medium: Gelatin silver contact print



Title: Untitled (Brooklyn Bridge)

Date: 1929 (negative, printed 1980)

Primary Maker: Walker Evans

Medium: Gelatin silver contact print



Title: Untitled (Chassis of car, standing before garage door)

Date: circa 1930 (negative, printed 1980)

Primary Maker: Walker Evans

Medium: Gelatin silver contact print



Title: Untitled (Cityscape with "Stepped" Building)

Date: circa 1928 - 1929

Primary Maker: Walker Evans

Medium: Gelatin silver contact print



Title: Untitled (Clothesline and Smokestacks)

Date: circa 1930 (negative, printed 1980)

Primary Maker: Walker Evans

Medium: Gelatin silver contact print



Title: Untitled (Clothesline and Smokestacks)

Date: circa 1930 (negative, printed 1980)

Primary Maker: Walker Evans

Medium: Gelatin silver print



Title: Untitled (Facade of six storey building, seen from the street)

Date: circa 1928 - 1930
(negative, printed 1980)

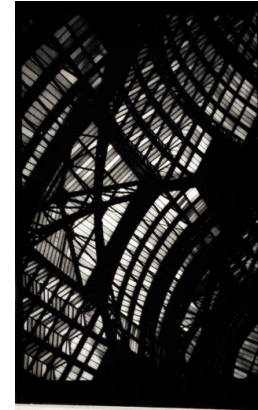
Primary Maker: Walker Evans
Medium: Gelatin silver print



Title: Untitled (Four people standing at curb, with autos and buildings in background)

Date: n.d. (negative, printed 1980)

Primary Maker: Walker Evans
Medium: Gelatin silver print



Title: Untitled (Glass Roof of Pennsylvania Station, New York City)

Date: circa 1928 - 1929
(negative, printed 1980)
Primary Maker: Walker Evans
Medium: Gelatin silver contact print



Title: Untitled [Going Out of Business]

Date: 1974

Primary Maker: Walker Evans
Medium: Dye diffusion transfer print (Polaroid)



Title: Untitled (Grave /The Whitaker Mausoleum, Florida)

Date: 1941 (negative, printed 1980)

Primary Maker: Walker Evans
Medium: Gelatin silver print



Title: Untitled (Jennings Carriages)

Date: 1933 (negative, printed 1980)

Primary Maker: Walker Evans
Medium: Gelatin silver print



Title: Untitled (Jennings Carriages/Detail of a Coach)

Date: 1933 (negative, printed 1980)

Primary Maker: Walker Evans
Medium: Gelatin silver print



Title: Untitled (Jennings Carriages: Detail of Wagon Wheel)

Date: 1933 (negative, printed 1980)

Primary Maker: Walker Evans
Medium: Gelatin silver print



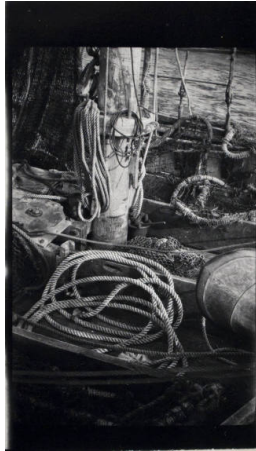
Title: Untitled (Looking up at ice/coal trucks and bridge)

Date: n.d. (negative, printed 1980)

Primary Maker: Walker Evans
Medium: Gelatin silver print



Title: Untitled (Looking upwards, from a construction site)
Date: circa 1928 - 1929 (negative, printed 1980)
Primary Maker: Walker Evans
Medium: Gelatin silver contact print



Title: Untitled (Manhattan Dock)
Date: 1928 (negative, printed 1980)
Primary Maker: Walker Evans
Medium: Gelatin silver contact print



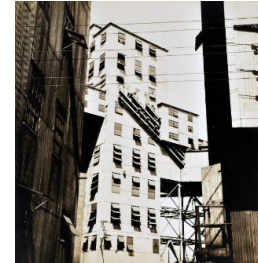
Title: Untitled (Manhattan Skyline from Brooklyn Bridge)
Date: circa 1928 - 1930
Primary Maker: Walker Evans
Medium: Gelatin silver contact print



Title: Untitled (Mermaid Curio Shop, Florida)
Date: 1941 (negative, printed 1980)
Primary Maker: Walker Evans
Medium: Gelatin silver print



Title: Untitled (Mermaid Curio Shop, Florida)
Date: 1941 (negative, printed 1980)
Primary Maker: Walker Evans
Medium: Gelatin silver print



Title: Untitled (Montreal Grain Elevators)
Date: circa 1930
Primary Maker: Walker Evans
Medium: Gelatin silver contact print



Title: Untitled (New York)
Date: circa 1928 - 1929 (negative, printed 1980)
Primary Maker: Walker Evans
Medium: Gelatin silver contact print



Title: Untitled (New York City, Lincoln Building Construction, 42nd Street and Park Avenue)
Date: 1929 - 1930 (negative, printed 1980)
Primary Maker: Walker Evans
Medium: Gelatin silver contact print



Title: Untitled (New York City, Lincoln Building Construction, 42nd Street and Park Avenue)
Date: 1929 - 1930 (negative, printed 1980)
Primary Maker: Walker Evans
Medium: Gelatin silver contact print



Title: Untitled (New York City Street Corner, High Angle View)

Date: circa 1929 (negative, printed 1980)

Primary Maker: Walker Evans
Medium: Gelatin silver contact print



Title: Untitled (New York City Streetcorner, High Angle View)

Date: 1929 (negative, printed 1980)

Primary Maker: Walker Evans
Medium: Gelatin silver contact print



Title: Untitled (Portrait of man, with display case)

Date: n.d. (negative, printed 1980)

Primary Maker: Walker Evans
Medium: Gelatin silver print



Title: Untitled (Resort photographer at work, Florida)

Date: 1941 (negative, printed 1980)

Primary Maker: Walker Evans
Medium: Gelatin silver print



Title: Untitled (Skyscraper with Cranes)

Date: circa 1928 - 1929

Primary Maker: Walker Evans
Medium: Gelatin silver contact print



Title: Untitled (Stevedore)

Date: 1933

Primary Maker: Walker Evans
Medium: Gelatin silver print



Title: Untitled (Subway Portrait)

Date: 1938 - 1941

Primary Maker: Walker Evans
Medium: Gelatin silver print



Title: Untitled (Subway Portrait)

Date: 1938 - 1941

Primary Maker: Walker Evans
Medium: Gelatin silver print



Title: Untitled (Subway Portrait)

Date: 1941

Primary Maker: Walker Evans
Medium: Gelatin silver print



**Title: Untitled
(Uninhabited Seaside
Residence near Sarasota
/Ca' d'Zan, The Ringling
Residence)**

Date: 1941 (negative, printed 1980)

Primary Maker: Walker Evans

Medium: Gelatin silver print



**Title: Untitled (U.S.
Rubber Sign, Manhattan)**

Date: circa 1928 - 1930
(negative, printed 1980)

Primary Maker: Walker Evans

Medium: Gelatin silver contact
print



**Title: Untitled (View from
underneath the El tracks)**

Date: circa 1928 - 1930
(negative, printed 1980)

Primary Maker: Walker Evans

Medium: Gelatin silver contact
print



**Title: Washington Street,
New York City/Wash Day**

Date: circa 1930 (negative,
printed 1980)

Primary Maker: Walker Evans

Medium: Gelatin silver print



**Title: Washington Street,
New York City/Wash Day**

Date: circa 1930 (negative,
printed 1980)

Primary Maker: Walker Evans

Medium: Gelatin silver print



**Title: Woman and
Children, Havana**

Date: 1933

Primary Maker: Walker Evans

Medium: Gelatin silver print



**Title: Young Black
Woman**

Date: 1903 - 1975

Primary Maker: Walker Evans

Medium: Gelatin silver print