

# Basic Report



**Title:** 2 Tatus

**Date:** 1969

**Primary Maker:** Ed Paschke

**Medium:** Oil on canvas in artist's painted wood frame



**Title:** Automagica

**Date:** 1986

**Primary Maker:** Ed Paschke

**Medium:** Oil on canvas in original artist's frame

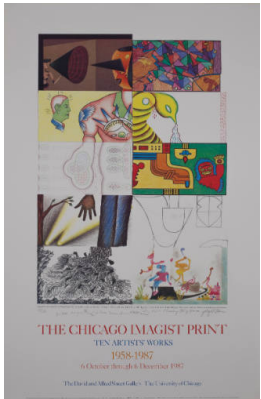


**Title:** Bad

**Date:** 1991

**Primary Maker:** Ed Paschke

**Medium:** Color screenprint



**Title:** The Chicago Imagist Print

**Date:** 1987

**Primary Maker:** Roger Brown

**Medium:** Color offset lithograph



**Title:** Chicago International Art Exposition

**Date:** 1984

**Primary Maker:** Ed Paschke

**Medium:** Color offset lithograph based on the image of the Paschke color lithograph Viseon (1983-1984, A/B 254) with the addition of the exposition's title and dates

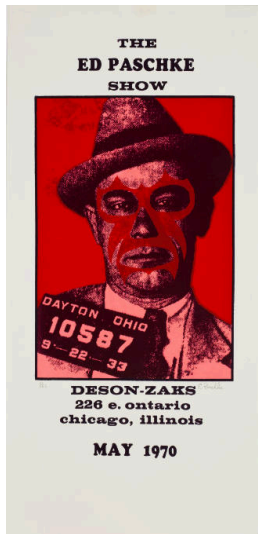


**Title:** Chicago International Art Exposition

**Date:** 1994

**Primary Maker:** Ed Paschke

**Medium:** Color offset lithograph commercially printed on coated paper



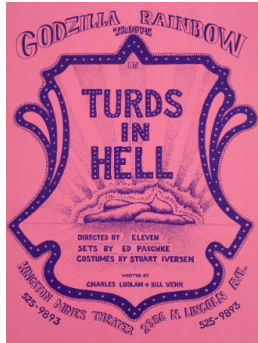
**Title: The Ed Paschke Show**  
**Date:** 1970  
**Primary Maker:** Ed Paschke  
**Medium:** Color screenprint on wove paper



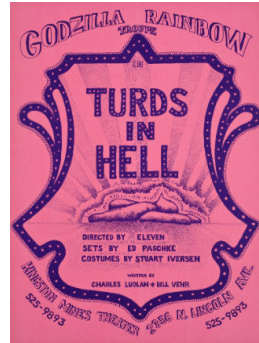
**Title: Execo**  
**Date:** 1983  
**Primary Maker:** Ed Paschke  
**Medium:** Four-color (yellow-green blend, blue, orange, blue-black) lithograph



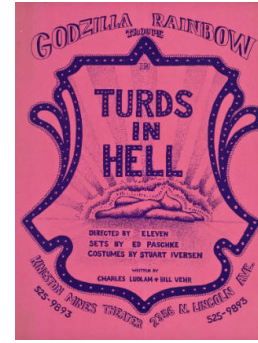
**Title: Flamenco**  
**Date:** 1991  
**Primary Maker:** Ed Paschke  
**Medium:** Color screenprint



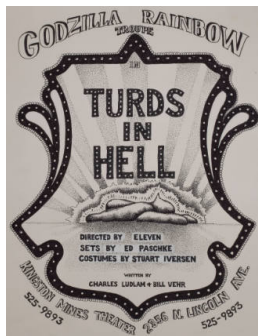
**Title: Godzilla Rainbow Troupe in "Turds In Hell"**  
**Date:** 1972  
**Primary Maker:** Ed Paschke  
**Medium:** Offset lithograph (purple) commercially printed on dark pink wove paperboard, from an original drawing made for the purpose



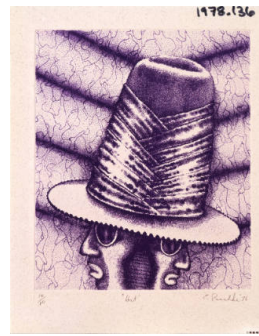
**Title: Godzilla Rainbow Troupe in "Turds In Hell"**  
**Date:** 1972  
**Primary Maker:** Ed Paschke  
**Medium:** Offset lithograph (purple) commercially printed on dark pink wove paperboard, from an original drawing made for the purpose



**Title: Godzilla Rainbow Troupe in "Turds In Hell"**  
**Date:** 1972  
**Primary Maker:** Ed Paschke  
**Medium:** Offset lithograph (purple) commercially printed on dark pink wove paperboard, from an original drawing made for the purpose



**Title: Godzilla Rainbow Troupe in "Turds In Hell"**  
**Date:** 1972  
**Primary Maker:** Ed Paschke  
**Medium:** Felt-tip marker, pencil and paint on wove paper



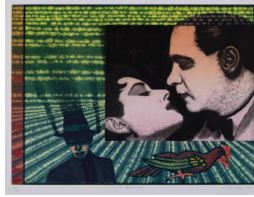
**Title: Hat**  
**Date:** 1976  
**Primary Maker:** Ed Paschke  
**Medium:** One-color (purple) etching and soft-ground etching on Twinrocker Mill paper



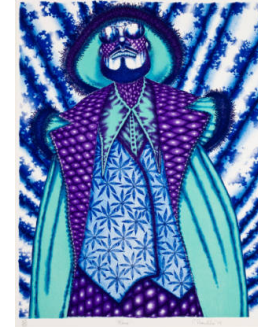
**Title: Hophead**  
**Date:** 1970  
**Primary Maker:** Ed Paschke  
**Medium:** Oil on canvas in artist's original painted frame



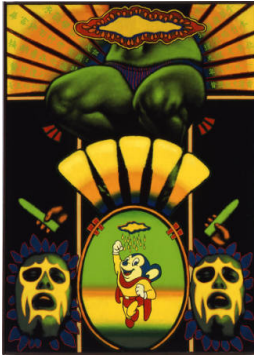
**Title: Hubert**  
**Date:** 1976  
**Primary Maker:** Ed Paschke  
**Medium:** Six-color lithograph on Arches Cover White 300 grams paper



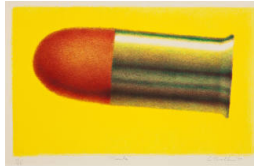
**Title: In America**  
**Date:** 1997  
**Primary Maker:** Ed Paschke  
**Medium:** Color etching



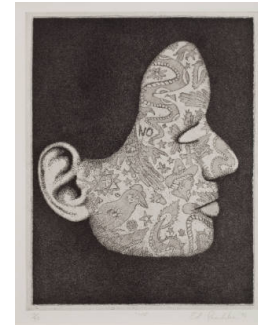
**Title: Klaus**  
**Date:** 1976  
**Primary Maker:** Ed Paschke  
**Medium:** Five-color lithograph on Arches Cover White 300 grams paper



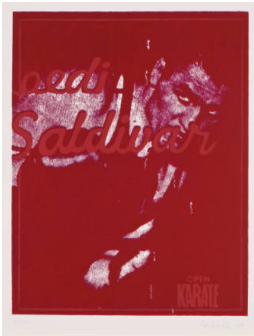
**Title: Mighty Mask**  
**Date:** 1969  
**Primary Maker:** Ed Paschke  
**Medium:** Oil on canvas in original artist's frame



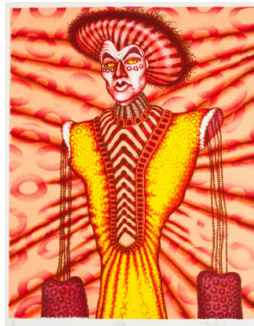
**Title: Missile**  
**Date:** 1997  
**Primary Maker:** Ed Paschke  
**Medium:** Color lithograph



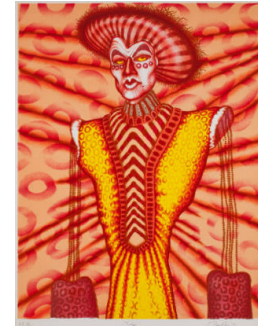
**Title: "No"**  
**Date:** 1993  
**Primary Maker:** Ed Paschke  
**Medium:** Etching and aquatint on wove paper



**Title: Open Karate**  
**Date:** 1968 - 1969  
**Primary Maker:** Ed Paschke  
**Medium:** Color screenprint on wove paper



**Title: Tudor**  
**Date:** 1976  
**Primary Maker:** Ed Paschke  
**Medium:** Six-color lithograph on Arches Cover White 300 grams paper



**Title: Tudor**  
**Date:** 1976  
**Primary Maker:** Ed Paschke  
**Medium:** Color lithograph on wove paper



**Title: Turds in Hell 1/3 Dollar**

**Date:** 1972

**Primary Maker:** Ed Paschke

**Medium:** Offset lithograph (black) commercially printed on white wove paperboard, from an original drawing made for the purpose



**Title: Turds in Hell 1/3 Dollar**

**Date:** 1972

**Primary Maker:** Ed Paschke

**Medium:** Offset lithograph (black) commercially printed on white wove paperboard, from an original drawing made for the purpose



**Title: Untitled**

**Date:** 1970

**Primary Maker:** Ed Paschke

**Medium:** Color silkscreen on wove paper



**Title: Untitled**

**Date:** 1976

**Primary Maker:** Ed Paschke

**Medium:** Lithograph on wove paper