

Basic Report

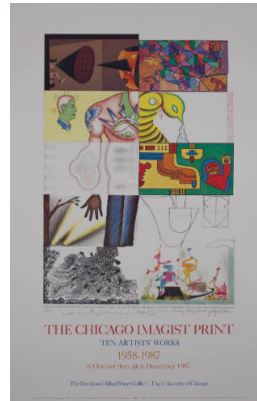


Title: Back-to-Back

Date: 1973

Primary Maker: Christina Ramberg

Medium: Etching (black) on white wove paper



Title: The Chicago Imagist Print

Date: 1987

Primary Maker: Roger Brown

Medium: Color offset lithograph



Title: The False Image

Date: 1968

Primary Maker: Roger Brown

Medium: Offset lithograph commercially printed on coated wove paper, based on two exquisite corpse drawings made for the purpose by the four artists

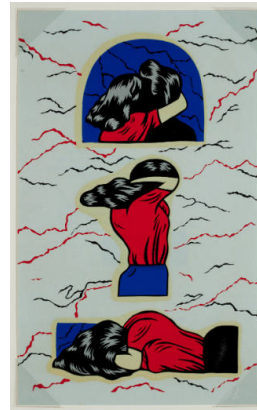


Title: False Image Decal

Date: 1969

Primary Maker: Christina Ramberg

Medium: Color silkscreen decals (black, blue, red) on off-white paper with blue-green recto commercially manufactured, based on original drawings made for the purpose by Roger Brown, Eleanor Dube, Philip Hanson and Christina Ramberg; for which the stencils were cut by Roger Brown and then transferred to screens for printing by the Chicago Decal Company; four separate sheets (one by each artist) enclosed in a commercial white envelope with a window opening and printed text (black silkscreen) designed and executed by the artists



Title: False Image Decal

Date: 1969

Primary Maker: Christina Ramberg

Medium: Color silkscreen decals (black, blue, red) on off-white paper with blue-green recto commercially manufactured, based on original drawings made for the purpose by Roger Brown, Eleanor Dube, Philip Hanson and Christina Ramberg; for which the stencils were cut by Roger Brown and then transferred to screens for printing by the Chicago Decal Company; four separate sheets (one by each artist). No envelope was included with this set.

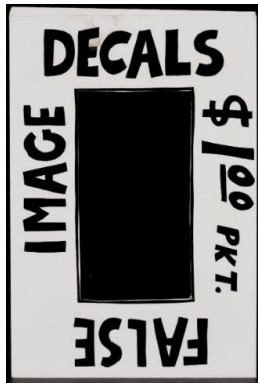


Title: False Image Decal

Date: 1969

Primary Maker: Christina Ramberg

Medium: Color silkscreen decals (black, blue, red) on off-white paper with blue-green recto commercially manufactured, based on original drawings made for the purpose by Roger Brown, Eleanor Dube, Philip Hanson and Christina Ramberg; for which the stencils were cut by Roger Brown and then transferred to screens for printing by the Chicago Decal Company; four separate sheets (one by each artist) enclosed in a commercial white envelope with a window opening and printed text (black silkscreen) designed and executed by the artists



Title: False Image Decal Envelope

Date: 1969

Primary Maker: Philip Hanson

Medium: Envelope for color silkscreen decals (black, blue, red) on off-white paper with blue-green recto commercially manufactured, based on original drawings made for the purpose by Roger Brown, Eleanor Dube, Philip Hanson and Christina Ramberg; for which the stencils were cut by Roger Brown and then transferred to screens for printing by the Chicago Decal Company; four separate sheets (one by each artist) enclosed in a commercial white envelope with a window opening and printed text (black silkscreen) designed and executed by the artists



Title: False Image Decal Envelope

Date: 1969

Primary Maker: Christina Ramberg

Medium: Color silkscreen decals (black, blue, red) on off-white paper with blue-green recto commercially manufactured, based on original drawings made for the purpose by Roger Brown, Eleanor Dube, Philip Hanson and Christina Ramberg; for which the stencils were cut by Roger Brown and then transferred to screens for printing by the Chicago Decal Company; four separate sheets (one by each artist) enclosed in a commercial white envelope with a window opening and printed text (black silkscreen) designed and executed by the artists

Title: False Image Decals

Date: 1969

Primary Maker: Roger Brown

Medium: Four separate sheets of color silkscreen decals (black, blue, red) on off-white paper with blue-green recto commercially manufactured and envelope. Based on original drawings made for the purpose by Roger Brown, Eleanor Dube, Philip Hanson and Christina Ramberg; for which the stencils were cut by Roger Brown and then transferred to screens for printing by the Chicago Decal Company; four separate sheets (one by each artist) enclosed in a commercial white envelope with a window opening and printed text (black silkscreen) designed and executed by the artists



Title: False Image Decals

Date: 1969

Primary Maker: Roger Brown

Medium: Color silkscreen decals (black, blue, red) on off-white paper with blue-green recto commercially manufactured, based on original drawings made for the purpose by Roger Brown, Eleanor Dube, Philip Hanson and Christina Ramberg; for which the stencils were cut by Roger Brown and then transferred to screens for printing by the Chicago Decal Company; four separate sheets (one by each artist). No envelope was included with this set.



Title: False Image Decals

Date: 1969

Primary Maker: Roger Brown

Medium: Color silkscreen decals (black, blue, red) on off-white paper with blue-green recto commercially manufactured, based on original drawings made for the purpose by the four artists, for which the stencils were cut by Roger Brown and then transferred to screens for printing by the Chicago Decal Company; four separate sheets (one by each artist) enclosed in a commercial white envelope with a window opening and printed text (black silkscreen) designed and executed by the artists



Title: False Image Postcard

Date: 1968

Primary Maker: Christina Ramberg

Medium: Color offset photolithograph (black, blue) commercially printed recto and verso on thick off-white wove paper (some with a textured, coated surface on the recto), based on eight original drawings and handwritten verso text made to scale for the purpose by the four artists



Title: False Image Postcard

Date: 1968

Primary Maker: Christina Ramberg

Medium: Color offset photolithograph (black, blue) commercially printed recto and verso on thick off-white wove paper (some with a textured, coated surface on the recto), based on eight original drawings and handwritten verso text made to scale for the purpose by the four artists

Title: False Image Postcards

Date: 1968

Primary Maker: Roger Brown

Medium: Color offset photolithograph (black, blue) commercially printed recto and verso on thick off-white wove paper (some with a textured, coated surface on the recto), based on eight original drawings and handwritten verso text made to scale for the purpose by the four artists



Title: Head

Date: 1969 - 1970

Primary Maker: Christina Ramberg

Medium: Color silkscreen on wove paper



Title: Heads

Date: 1973

Primary Maker: Christina
Ramberg

Medium: Etching (black) on
wove paper