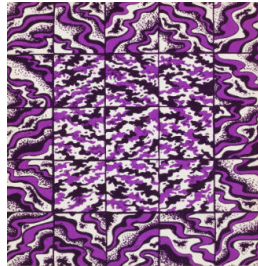


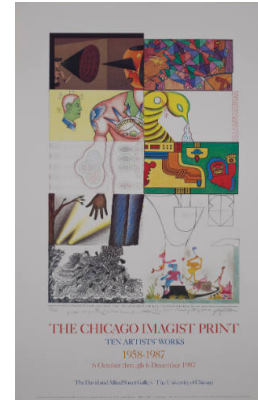
Basic Report



Title: Chicago Imagist Art
Date: 1972
Primary Maker: Philip Hanson
Medium: Color offset lithograph (black, purple) commercially printed on thick off-white wove paper, from an original drawing made for the purpose



Title: Chicago Imagist Art
Date: 1972
Primary Maker: Philip Hanson
Medium: Color offset lithograph (black, purple) commercially printed on thick off-white wove paper, from an original drawing made for the purpose



Title: The Chicago Imagist Print
Date: 1987
Primary Maker: Roger Brown
Medium: Color offset lithograph

Title: Country Club Dance
Date: December 1968
Primary Maker: Philip Hanson
Medium: Etching (black) on wove paper, hand colored in watercolor



Title: Demon Wealth For Sale
Date: 1969
Primary Maker: Philip Hanson
Medium: Oil on canvas, in artist's constructed and painted wood frame



Title: The False Image
Date: 1968
Primary Maker: Roger Brown
Medium: Offset lithograph commercially printed on coated wove paper, based on two exquisite corpse drawings made for the purpose by the four artists



Title: False Image Decal

Date: 1969

Primary Maker: Philip Hanson

Medium: Color silk-screen decals (black, blue, red) on off-white paper with blue-green recto commercially manufactured, based on original drawings made for the purpose by Roger Brown, Eleanor Dube, Philip Hanson and Christina Ramberg; for which the stencils were cut by Roger Brown and then transferred to screens for printing by the Chicago Decal Company; four separate sheets (one by each artist) enclosed in a commercial white envelope with a window opening and printed text (black silk-screen) designed and executed by the artists



Title: False Image Decal

Date: 1969

Primary Maker: Philip Hanson

Medium: Color silk-screen decals (black, blue, red) on off-white paper with blue-green recto commercially manufactured, based on original drawings made for the purpose by Roger Brown, Eleanor Dube, Philip Hanson and Christina Ramberg; for which the stencils were cut by Roger Brown and then transferred to screens for printing by the Chicago Decal Company; four separate sheets (one by each artist). No envelope was included with this set.

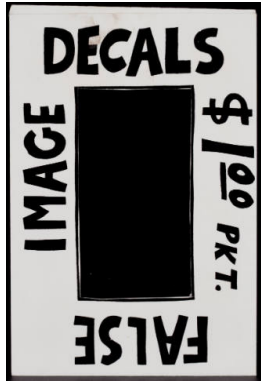


Title: False Image Decal

Date: 1969

Primary Maker: Philip Hanson

Medium: Color silk-screen decals (black, blue, red) on off-white paper with blue-green recto commercially manufactured, based on original drawings made for the purpose by Roger Brown, Eleanor Dube, Philip Hanson and Christina Ramberg; for which the stencils were cut by Roger Brown and then transferred to screens for printing by the Chicago Decal Company; four separate sheets (one by each artist) enclosed in a commercial white envelope with a window opening and printed text (black silk-screen) designed and executed by the artists



Title: False Image Decal Envelope

Date: 1969

Primary Maker: Philip Hanson

Medium: Envelope for color silkscreen decals (black, blue, red) on off-white paper with blue-green recto commercially manufactured, based on original drawings made for the purpose by Roger Brown, Eleanor Dube, Philip Hanson and Christina Ramberg; for which the stencils were cut by Roger Brown and then transferred to screens for printing by the Chicago Decal Company; four separate sheets (one by each artist) enclosed in a commercial white envelope with a window opening and printed text (black silkscreen) designed and executed by the artists



Title: False Image Decal Envelope

Date: 1969

Primary Maker: Christina Ramberg

Medium: Color silkscreen decals (black, blue, red) on off-white paper with blue-green recto commercially manufactured, based on original drawings made for the purpose by Roger Brown, Eleanor Dube, Philip Hanson and Christina Ramberg; for which the stencils were cut by Roger Brown and then transferred to screens for printing by the Chicago Decal Company; four separate sheets (one by each artist) enclosed in a commercial white envelope with a window opening and printed text (black silkscreen) designed and executed by the artists

Title: False Image Decals

Date: 1969

Primary Maker: Roger Brown

Medium: Four separate sheets of color silkscreen decals (black, blue, red) on off-white paper with blue-green recto commercially manufactured and envelope. Based on original drawings made for the purpose by Roger Brown, Eleanor Dube, Philip Hanson and Christina Ramberg; for which the stencils were cut by Roger Brown and then transferred to screens for printing by the Chicago Decal Company; four separate sheets (one by each artist) enclosed in a commercial white envelope with a window opening and printed text (black silkscreen) designed and executed by the artists

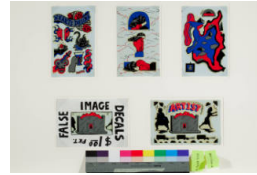


Title: False Image Decals

Date: 1969

Primary Maker: Roger Brown

Medium: Color silkscreen decals (black, blue, red) on off-white paper with blue-green recto commercially manufactured, based on original drawings made for the purpose by Roger Brown, Eleanor Dube, Philip Hanson and Christina Ramberg; for which the stencils were cut by Roger Brown and then transferred to screens for printing by the Chicago Decal Company; four separate sheets (one by each artist).

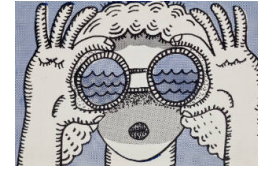


Title: False Image Decals

Date: 1969

Primary Maker: Roger Brown

Medium: Color silkscreen decals (black, blue, red) on off-white paper with blue-green recto commercially manufactured, based on original drawings made for the purpose by the four artists, for which the stencils were cut by Roger Brown and then transferred to screens for printing by the Chicago Decal Company; four separate sheets (one by each artist) enclosed in a commercial white envelope with a window opening and printed text (black silkscreen) designed and executed by the artists



Title: False Image Postcard

Date: 1968

Primary Maker: Philip Hanson

Medium: Color offset photolithograph (black, blue) commercially printed recto and verso on thick off-white wove paper (some with a textured, coated surface on the recto), based on eight original drawings and handwritten verso text made to scale for the purpose by the four artists



Title: False Image Postcard

Date: 1968

Primary Maker: Philip Hanson

Medium: Color offset photolithograph (black, blue) commercially printed recto and verso on thick off-white wove paper (some with a textured, coated surface on the recto), based on eight original drawings and handwritten verso text made to scale for the purpose by the four artists

Title: False Image Postcards

Date: 1968

Primary Maker: Roger Brown

Medium: Color offset photolithograph (black, blue) commercially printed recto and verso on thick off-white wove paper (some with a textured, coated surface on the recto), based on eight original drawings and handwritten verso text made to scale for the purpose by the four artists



Title: Fiesta

Date: 1968

Primary Maker: Philip Hanson

Medium: Silkscreen (black), hand-colored in red, on off-white wove paperboard



Title: Flower Presentation

Date: 1973

Primary Maker: Philip Hanson

Medium: Etching (black) on wove paper, hand-colored in watercolor

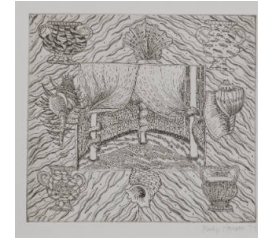


Title: Flower Presentation

Date: 1974

Primary Maker: Philip Hanson

Medium: Etching (black) on wove paper, hand-colored in watercolor



Title: Room with Shells and Vases

Date: 1976

Primary Maker: Philip Hanson

Medium: Etching (black) on white wove paper

Title: Room with Vases and Flowers

Date: 1974 - 1975

Primary Maker: Philip Hanson

Medium: Etching with handcoloring in watercolor on stiff wove paper

Title: Room with Vases and Flowers

Date: 1974 - 1975

Primary Maker: Philip Hanson

Medium: Etching (black) on wove paper, hand-colored in watercolor

Title: St. Anthony Pleasure Park

Date: July 1968

Primary Maker: Philip Hanson

Medium: Etching (black) on wove paper, hand colored in watercolor



Title: There are Countless Rooms

Date: 1971

Primary Maker: Philip Hanson

Medium: Acrylic on canvas



Title: Untitled

Date: 1975

Primary Maker: Philip Hanson

Medium: Etching (black) on wove paper



Title: Untitled

Date: circa 1970

Primary Maker: Philip Hanson

Medium: Graphite and colored pencil on paper