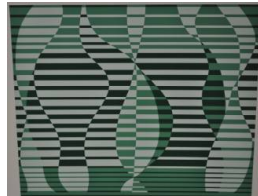


# Basic Report

---



**Title: Formulation:  
Articulation**  
**Date:** 1972  
**Primary Maker:** Josef Albers  
**Medium:** Serigraph images on  
Mohawk 140 lb. superfine  
specially made paper



**Title: Formulation:  
Articulation**  
**Date:** 1972  
**Primary Maker:** Josef Albers  
**Medium:** Serigraph images on  
Mohawk 140 lb. superfine  
specially made paper



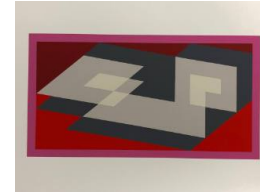
**Title: Formulation:  
Articulation**  
**Date:** 1972  
**Primary Maker:** Josef Albers  
**Medium:** Serigraph images on  
Mohawk 140 lb. superfine  
specially made paper



**Title: Formulation:  
Articulation**  
**Date:** 1972  
**Primary Maker:** Josef Albers  
**Medium:** Serigraph images on  
Mohawk 140 lb. superfine  
specially made paper



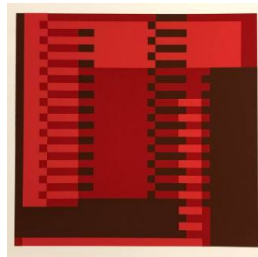
**Title: Formulation:  
Articulation**  
**Date:** 1972  
**Primary Maker:** Josef Albers  
**Medium:** Serigraph images on  
Mohawk 140 lb. superfine  
specially made paper



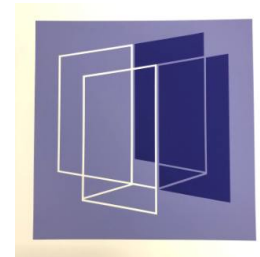
**Title: Formulation:  
Articulation**  
**Date:** 1972  
**Primary Maker:** Josef Albers  
**Medium:** Serigraph images on  
Mohawk 140 lb. superfine  
specially made paper



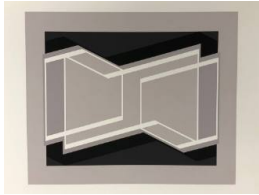
**Title: Formulation:  
Articulation**  
**Date:** 1972  
**Primary Maker:** Josef Albers  
**Medium:** Serigraph images on  
Mohawk 140 lb. superfine  
specially made paper



**Title: Formulation:  
Articulation**  
**Date:** 1972  
**Primary Maker:** Josef Albers  
**Medium:** Serigraph images on  
Mohawk 140 lb. superfine  
specially made paper



**Title: Formulation:  
Articulation**  
**Date:** 1972  
**Primary Maker:** Josef Albers  
**Medium:** Serigraph images on  
Mohawk 140 lb. superfine  
specially made paper

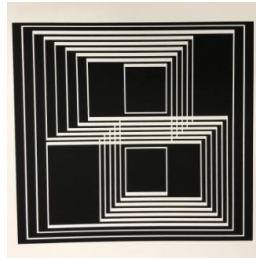


**Title: Formulation:**

**Articulation**

**Date:** 1972

**Primary Maker:** Josef Albers  
**Medium:** Serigraph images on Mohawk 140 lb. superfine specially made paper

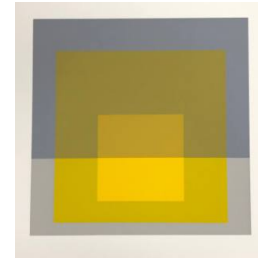


**Title: Formulation:**

**Articulation**

**Date:** 1972

**Primary Maker:** Josef Albers  
**Medium:** Serigraph images on Mohawk 140 lb. superfine specially made paper

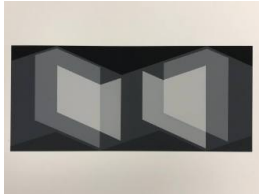


**Title: Formulation:**

**Articulation**

**Date:** 1972

**Primary Maker:** Josef Albers  
**Medium:** Serigraph images on Mohawk 140 lb. superfine specially made paper

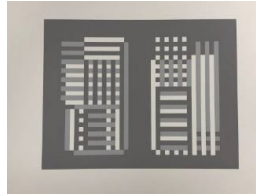


**Title: Formulation:**

**Articulation**

**Date:** 1972

**Primary Maker:** Josef Albers  
**Medium:** Serigraph images on Mohawk 140 lb. superfine specially made paper

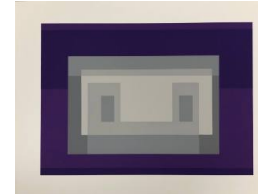


**Title: Formulation:**

**Articulation**

**Date:** 1972

**Primary Maker:** Josef Albers  
**Medium:** Serigraph images on Mohawk 140 lb. superfine specially made paper

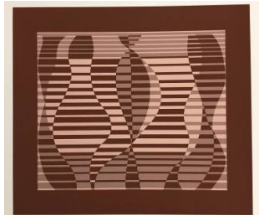


**Title: Formulation:**

**Articulation**

**Date:** 1972

**Primary Maker:** Josef Albers  
**Medium:** Serigraph images on Mohawk 140 lb. superfine specially made paper



**Title: Formulation:**

**Articulation**

**Date:** 1972

**Primary Maker:** Josef Albers  
**Medium:** Serigraph images on Mohawk 140 lb. superfine specially made paper

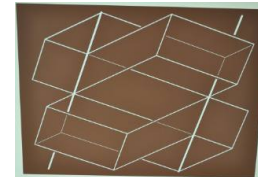


**Title: Formulation:**

**Articulation**

**Date:** 1972

**Primary Maker:** Josef Albers  
**Medium:** Serigraph images on Mohawk 140 lb. superfine specially made paper



**Title: Formulation:**

**Articulation**

**Date:** 1972

**Primary Maker:** Josef Albers  
**Medium:** Serigraph images on Mohawk 140 lb. superfine specially made paper



**Title: Formulation:  
Articulation**

**Date:** 1972

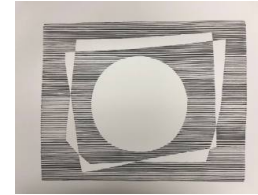
**Primary Maker:** Josef Albers  
**Medium:** Serigraph images on  
Mohawk 140 lb. superfine  
specially made paper



**Title: Formulation:  
Articulation**

**Date:** 1972

**Primary Maker:** Josef Albers  
**Medium:** Serigraph images on  
Mohawk 140 lb. superfine  
specially made paper



**Title: Formulation:  
Articulation**

**Date:** 1972

**Primary Maker:** Josef Albers  
**Medium:** Serigraph images on  
Mohawk 140 lb. superfine  
specially made paper



**Title: Formulation:  
Articulation**

**Date:** 1972

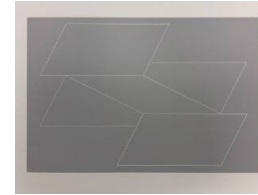
**Primary Maker:** Josef Albers  
**Medium:** Serigraph images on  
Mohawk 140 lb. superfine  
specially made paper



**Title: Formulation:  
Articulation**

**Date:** 1972

**Primary Maker:** Josef Albers  
**Medium:** Serigraph images on  
Mohawk 140 lb. superfine  
specially made paper



**Title: Formulation:  
Articulation**

**Date:** 1972

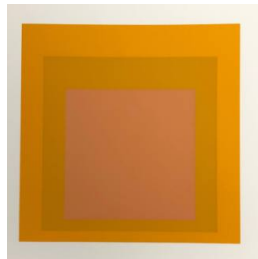
**Primary Maker:** Josef Albers  
**Medium:** Serigraph images on  
Mohawk 140 lb. superfine  
specially made paper



**Title: Formulation:  
Articulation**

**Date:** 1972

**Primary Maker:** Josef Albers  
**Medium:** Serigraph images on  
Mohawk 140 lb. superfine  
specially made paper



**Title: Formulation:  
Articulation**

**Date:** 1972

**Primary Maker:** Josef Albers  
**Medium:** Serigraph images on  
Mohawk 140 lb. superfine  
specially made paper



**Title: Formulation:  
Articulation**

**Date:** 1972

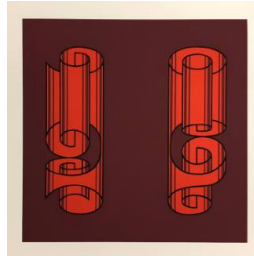
**Primary Maker:** Josef Albers  
**Medium:** Serigraph images on  
Mohawk 140 lb. superfine  
specially made paper



**Title: Formulation:  
Articulation**

**Date:** 1972

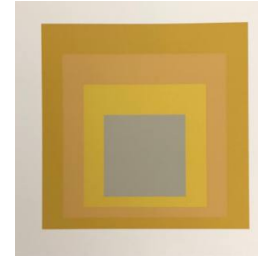
**Primary Maker:** Josef Albers  
**Medium:** Serigraph images on  
Mohawk 140 lb. superfine  
specially made paper



**Title: Formulation:  
Articulation**

**Date:** 1972

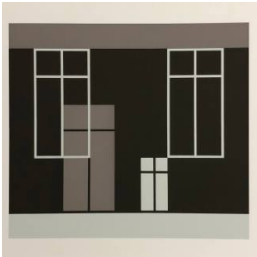
**Primary Maker:** Josef Albers  
**Medium:** Serigraph images on  
Mohawk 140 lb. superfine  
specially made paper



**Title: Formulation:  
Articulation**

**Date:** 1972

**Primary Maker:** Josef Albers  
**Medium:** Serigraph images on  
Mohawk 140 lb. superfine  
specially made paper



**Title: Formulation:  
Articulation**

**Date:** 1972

**Primary Maker:** Josef Albers  
**Medium:** Serigraph images on  
Mohawk 140 lb. superfine  
specially made paper



**Title: Formulation:  
Articulation**

**Date:** 1972

**Primary Maker:** Josef Albers  
**Medium:** Serigraph images on  
Mohawk 140 lb. superfine  
specially made paper



**Title: Formulation:  
Articulation**

**Date:** 1972

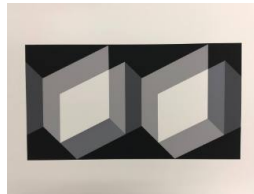
**Primary Maker:** Josef Albers  
**Medium:** Serigraph images on  
Mohawk 140 lb. superfine  
specially made paper



**Title: Formulation:  
Articulation**

**Date:** 1972

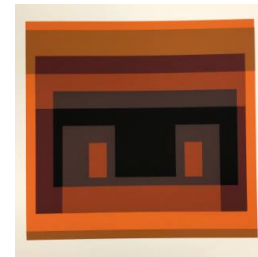
**Primary Maker:** Josef Albers  
**Medium:** Serigraph images on  
Mohawk 140 lb. superfine  
specially made paper



**Title: Formulation:  
Articulation**

**Date:** 1972

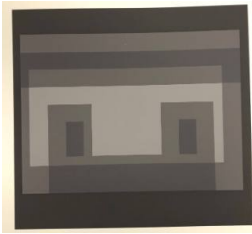
**Primary Maker:** Josef Albers  
**Medium:** Serigraph images on  
Mohawk 140 lb. superfine  
specially made paper



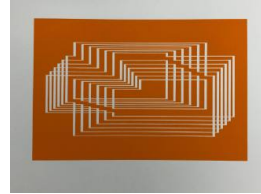
**Title: Formulation:  
Articulation**

**Date:** 1972

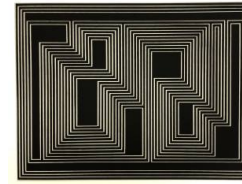
**Primary Maker:** Josef Albers  
**Medium:** Serigraph images on  
Mohawk 140 lb. superfine  
specially made paper



**Title: Formulation:  
Articulation**  
**Date:** 1972  
**Primary Maker:** Josef Albers  
**Medium:** Serigraph images on  
Mohawk 140 lb. superfine  
specially made paper



**Title: Formulation:  
Articulation**  
**Date:** 1972  
**Primary Maker:** Josef Albers  
**Medium:** Serigraph images on  
Mohawk 140 lb. superfine  
specially made paper



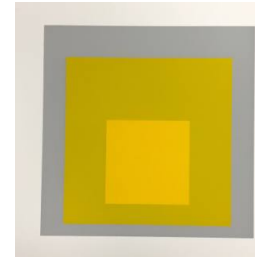
**Title: Formulation:  
Articulation**  
**Date:** 1972  
**Primary Maker:** Josef Albers  
**Medium:** Serigraph images on  
Mohawk 140 lb. superfine  
specially made paper



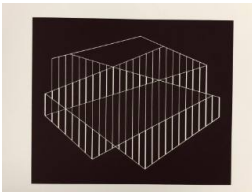
**Title: Formulation:  
Articulation**  
**Date:** 1972  
**Primary Maker:** Josef Albers  
**Medium:** Serigraph images on  
Mohawk 140 lb. superfine  
specially made paper



**Title: Formulation:  
Articulation**  
**Date:** 1972  
**Primary Maker:** Josef Albers  
**Medium:** Serigraph images on  
Mohawk 140 lb. superfine  
specially made paper



**Title: Formulation:  
Articulation**  
**Date:** 1972  
**Primary Maker:** Josef Albers  
**Medium:** Serigraph images on  
Mohawk 140 lb. superfine  
specially made paper



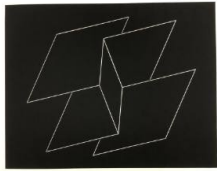
**Title: Formulation:  
Articulation**  
**Date:** 1972  
**Primary Maker:** Josef Albers  
**Medium:** Serigraph images on  
Mohawk 140 lb. superfine  
specially made paper



**Title: Formulation:  
Articulation**  
**Date:** 1972  
**Primary Maker:** Josef Albers  
**Medium:** Serigraph images on  
Mohawk 140 lb. superfine  
specially made paper



**Title: Formulation:  
Articulation**  
**Date:** 1972  
**Primary Maker:** Josef Albers  
**Medium:** Serigraph images on  
Mohawk 140 lb. superfine  
specially made paper



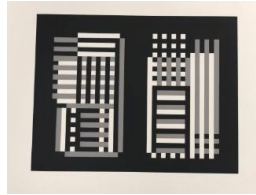
**Title: Formulation:**

**Articulation**

**Date:** 1972

**Primary Maker:** Josef Albers

**Medium:** Serigraph images on Mohawk 140 lb. superfine specially made paper



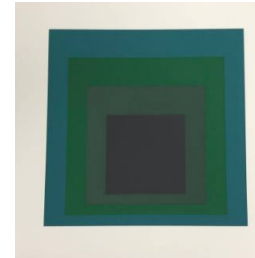
**Title: Formulation:**

**Articulation**

**Date:** 1972

**Primary Maker:** Josef Albers

**Medium:** Serigraph images on Mohawk 140 lb. superfine specially made paper



**Title: Formulation:**

**Articulation**

**Date:** 1972

**Primary Maker:** Josef Albers

**Medium:** Serigraph images on Mohawk 140 lb. superfine specially made paper



**Title: Formulation:**

**Articulation**

**Date:** 1972

**Primary Maker:** Josef Albers

**Medium:** Serigraph images on Mohawk 140 lb. superfine specially made paper



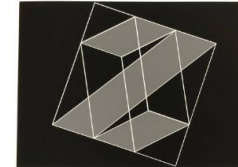
**Title: Formulation:**

**Articulation**

**Date:** 1972

**Primary Maker:** Josef Albers

**Medium:** Serigraph images on Mohawk 140 lb. superfine specially made paper



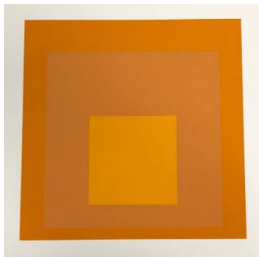
**Title: Formulation:**

**Articulation**

**Date:** 1972

**Primary Maker:** Josef Albers

**Medium:** Serigraph images on Mohawk 140 lb. superfine specially made paper



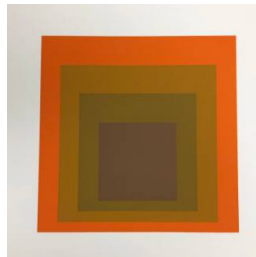
**Title: Formulation:**

**Articulation**

**Date:** 1972

**Primary Maker:** Josef Albers

**Medium:** Serigraph images on Mohawk 140 lb. superfine specially made paper



**Title: Formulation:**

**Articulation**

**Date:** 1972

**Primary Maker:** Josef Albers

**Medium:** Serigraph images on Mohawk 140 lb. superfine specially made paper



**Title: Formulation:**

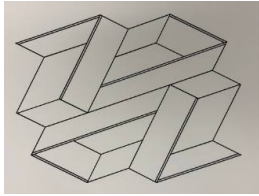
**Articulation**

**Date:** 1972

**Primary Maker:** Josef Albers

**Medium:** Serigraph images on Mohawk 140 lb. superfine specially made paper





**Title: Formulation:  
Articulation**  
**Date:** 1972  
**Primary Maker:** Josef Albers  
**Medium:** Serigraph images on  
Mohawk 140 lb. superfine  
specially made paper



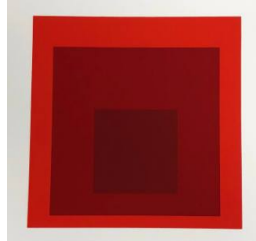
**Title: Formulation:  
Articulation**  
**Date:** 1972  
**Primary Maker:** Josef Albers  
**Medium:** Serigraph images on  
Mohawk 140 lb. superfine  
specially made paper



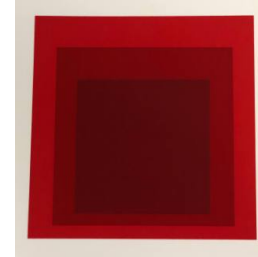
**Title: Formulation:  
Articulation**  
**Date:** 1972  
**Primary Maker:** Josef Albers  
**Medium:** Serigraph images on  
Mohawk 140 lb. superfine  
specially made paper



**Title: Formulation:  
Articulation**  
**Date:** 1972  
**Primary Maker:** Josef Albers  
**Medium:** Serigraph images on  
Mohawk 140 lb. superfine  
specially made paper



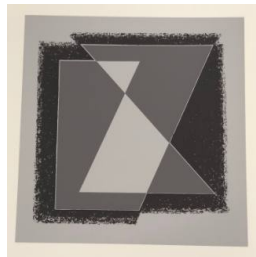
**Title: Formulation:  
Articulation**  
**Date:** 1972  
**Primary Maker:** Josef Albers  
**Medium:** Serigraph images on  
Mohawk 140 lb. superfine  
specially made paper



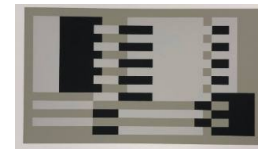
**Title: Formulation:  
Articulation**  
**Date:** 1972  
**Primary Maker:** Josef Albers  
**Medium:** Serigraph images on  
Mohawk 140 lb. superfine  
specially made paper



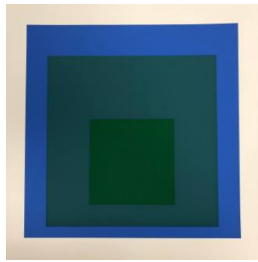
**Title: Formulation:  
Articulation**  
**Date:** 1972  
**Primary Maker:** Josef Albers  
**Medium:** Serigraph images on  
Mohawk 140 lb. superfine  
specially made paper



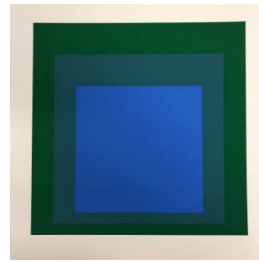
**Title: Formulation:  
Articulation**  
**Date:** 1972  
**Primary Maker:** Josef Albers  
**Medium:** Serigraph images on  
Mohawk 140 lb. superfine  
specially made paper



**Title: Formulation:  
Articulation**  
**Date:** 1972  
**Primary Maker:** Josef Albers  
**Medium:** Serigraph images on  
Mohawk 140 lb. superfine  
specially made paper



**Title: Formulation:  
Articulation**  
**Date:** 1972  
**Primary Maker:** Josef Albers  
**Medium:** Serigraph images on  
Mohawk 140 lb. superfine  
specially made paper



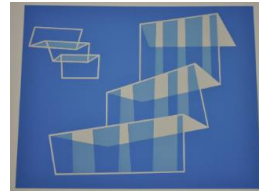
**Title: Formulation:  
Articulation**  
**Date:** 1972  
**Primary Maker:** Josef Albers  
**Medium:** Serigraph images on  
Mohawk 140 lb. superfine  
specially made paper



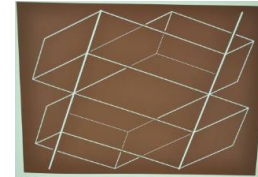
**Title: Formulation:  
Articulation**  
**Date:** 1972  
**Primary Maker:** Josef Albers  
**Medium:** Serigraph images on  
Mohawk 140 lb. superfine  
specially made paper



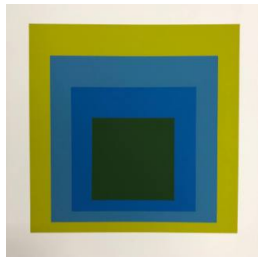
**Title: Formulation:  
Articulation**  
**Date:** 1972  
**Primary Maker:** Josef Albers  
**Medium:** Serigraph images on  
Mohawk 140 lb. superfine  
specially made paper



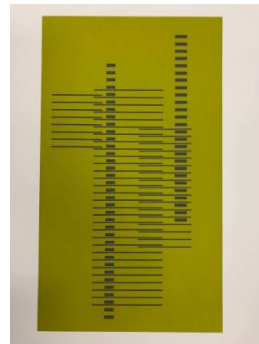
**Title: Formulation:  
Articulation**  
**Date:** 1972  
**Primary Maker:** Josef Albers  
**Medium:** Serigraph images on  
Mohawk 140 lb. superfine  
specially made paper



**Title: Formulation:  
Articulation**  
**Date:** 1972  
**Primary Maker:** Josef Albers  
**Medium:** Serigraph images on  
Mohawk 140 lb. superfine  
specially made paper



**Title: Formulation:  
Articulation**  
**Date:** 1972  
**Primary Maker:** Josef Albers  
**Medium:** Serigraph images on  
Mohawk 140 lb. superfine  
specially made paper



**Title: Formulation:  
Articulation**  
**Date:** 1972  
**Primary Maker:** Josef Albers  
**Medium:** Serigraph images on  
Mohawk 140 lb. superfine  
specially made paper



**Title: Formulation:  
Articulation**  
**Date:** 1972  
**Primary Maker:** Josef Albers  
**Medium:** Serigraph images on  
Mohawk 140 lb. superfine  
specially made paper





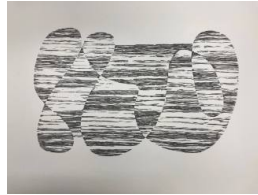
**Title: Formulation:**

**Articulation**

**Date:** 1972

**Primary Maker:** Josef Albers

**Medium:** Serigraph images on Mohawk 140 lb. superfine specially made paper



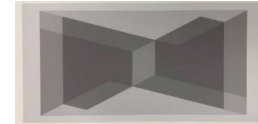
**Title: Formulation:**

**Articulation**

**Date:** 1972

**Primary Maker:** Josef Albers

**Medium:** Serigraph images on Mohawk 140 lb. superfine specially made paper



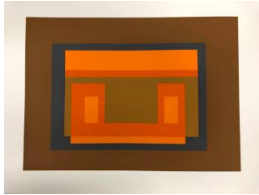
**Title: Formulation:**

**Articulation**

**Date:** 1972

**Primary Maker:** Josef Albers

**Medium:** Serigraph images on Mohawk 140 lb. superfine specially made paper



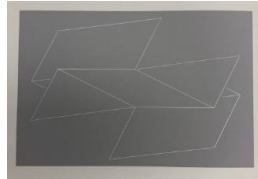
**Title: Formulation:**

**Articulation**

**Date:** 1972

**Primary Maker:** Josef Albers

**Medium:** Serigraph images on Mohawk 140 lb. superfine specially made paper



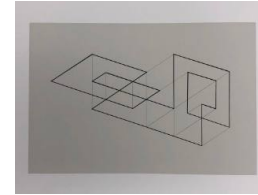
**Title: Formulation:**

**Articulation**

**Date:** 1972

**Primary Maker:** Josef Albers

**Medium:** Serigraph images on Mohawk 140 lb. superfine specially made paper



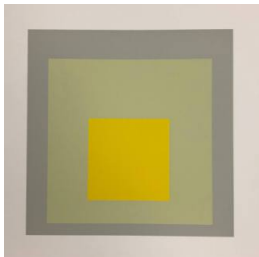
**Title: Formulation:**

**Articulation**

**Date:** 1972

**Primary Maker:** Josef Albers

**Medium:** Serigraph images on Mohawk 140 lb. superfine specially made paper



**Title: Formulation:**

**Articulation**

**Date:** 1972

**Primary Maker:** Josef Albers

**Medium:** Serigraph images on Mohawk 140 lb. superfine specially made paper



**Title: Formulation:**

**Articulation**

**Date:** 1972

**Primary Maker:** Josef Albers

**Medium:** Serigraph images on Mohawk 140 lb. superfine specially made paper



**Title: Formulation:**

**Articulation**

**Date:** 1972

**Primary Maker:** Josef Albers

**Medium:** Serigraph images on Mohawk 140 lb. superfine specially made paper



**Title: Formulation:**

**Articulation**

**Date:** 1972

**Primary Maker:** Josef Albers

**Medium:** Serigraph images on Mohawk 140 lb. superfine specially made paper



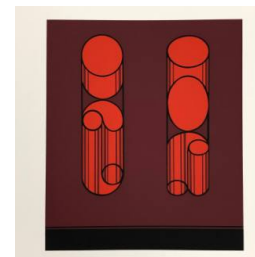
**Title: Formulation:**

**Articulation**

**Date:** 1972

**Primary Maker:** Josef Albers

**Medium:** Serigraph images on Mohawk 140 lb. superfine specially made paper



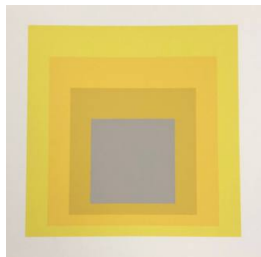
**Title: Formulation:**

**Articulation**

**Date:** 1972

**Primary Maker:** Josef Albers

**Medium:** Serigraph images on Mohawk 140 lb. superfine specially made paper



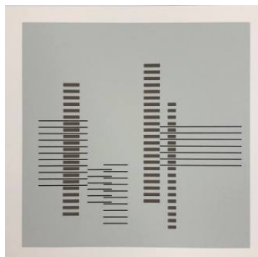
**Title: Formulation:**

**Articulation**

**Date:** 1972

**Primary Maker:** Josef Albers

**Medium:** Serigraph images on Mohawk 140 lb. superfine specially made paper



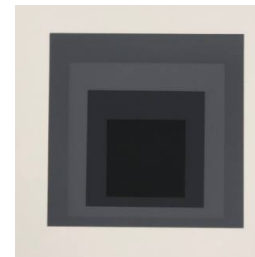
**Title: Formulation:**

**Articulation**

**Date:** 1972

**Primary Maker:** Josef Albers

**Medium:** Serigraph images on Mohawk 140 lb. superfine specially made paper



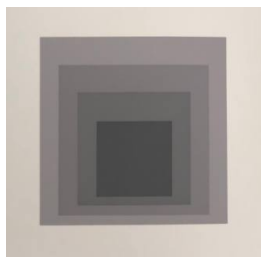
**Title: Formulation:**

**Articulation**

**Date:** 1972

**Primary Maker:** Josef Albers

**Medium:** Serigraph images on Mohawk 140 lb. superfine specially made paper



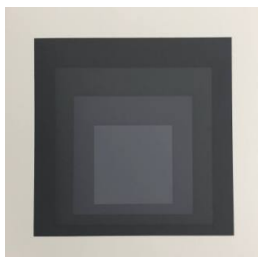
**Title: Formulation:**

**Articulation**

**Date:** 1972

**Primary Maker:** Josef Albers

**Medium:** Serigraph images on Mohawk 140 lb. superfine specially made paper



**Title: Formulation:**

**Articulation**

**Date:** 1972

**Primary Maker:** Josef Albers

**Medium:** Serigraph images on Mohawk 140 lb. superfine specially made paper



**Title: Formulation:**

**Articulation**

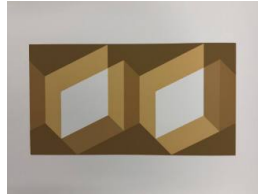
**Date:** 1972

**Primary Maker:** Josef Albers

**Medium:** Serigraph images on Mohawk 140 lb. superfine specially made paper



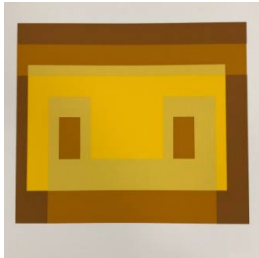
**Title: Formulation:  
Articulation**  
**Date:** 1972  
**Primary Maker:** Josef Albers  
**Medium:** Serigraph images on  
Mohawk 140 lb. superfine  
specially made paper



**Title: Formulation:  
Articulation**  
**Date:** 1972  
**Primary Maker:** Josef Albers  
**Medium:** Serigraph images on  
Mohawk 140 lb. superfine  
specially made paper



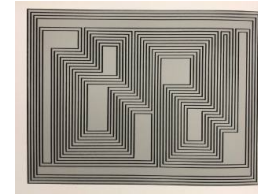
**Title: Formulation:  
Articulation**  
**Date:** 1972  
**Primary Maker:** Josef Albers  
**Medium:** Serigraph images on  
Mohawk 140 lb. superfine  
specially made paper



**Title: Formulation:  
Articulation**  
**Date:** 1972  
**Primary Maker:** Josef Albers  
**Medium:** Serigraph images on  
Mohawk 140 lb. superfine  
specially made paper



**Title: Formulation:  
Articulation**  
**Date:** 1972  
**Primary Maker:** Josef Albers  
**Medium:** Serigraph images on  
Mohawk 140 lb. superfine  
specially made paper



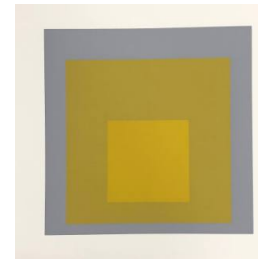
**Title: Formulation:  
Articulation**  
**Date:** 1972  
**Primary Maker:** Josef Albers  
**Medium:** Serigraph images on  
Mohawk 140 lb. superfine  
specially made paper



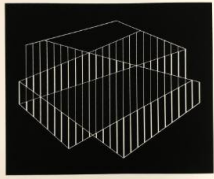
**Title: Formulation:  
Articulation**  
**Date:** 1972  
**Primary Maker:** Josef Albers  
**Medium:** Serigraph images on  
Mohawk 140 lb. superfine  
specially made paper



**Title: Formulation:  
Articulation**  
**Date:** 1972  
**Primary Maker:** Josef Albers  
**Medium:** Serigraph images on  
Mohawk 140 lb. superfine  
specially made paper



**Title: Formulation:  
Articulation**  
**Date:** 1972  
**Primary Maker:** Josef Albers  
**Medium:** Serigraph images on  
Mohawk 140 lb. superfine  
specially made paper

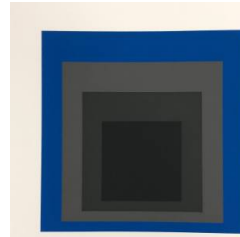


**Title: Formulation:**

**Articulation**

**Date:** 1972

**Primary Maker:** Josef Albers  
**Medium:** Serigraph images on Mohawk 140 lb. superfine specially made paper



**Title: Formulation:**

**Articulation**

**Date:** 1972

**Primary Maker:** Josef Albers  
**Medium:** Serigraph images on Mohawk 140 lb. superfine specially made paper

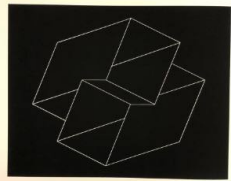


**Title: Formulation:**

**Articulation**

**Date:** 1972

**Primary Maker:** Josef Albers  
**Medium:** Serigraph images on Mohawk 140 lb. superfine specially made paper

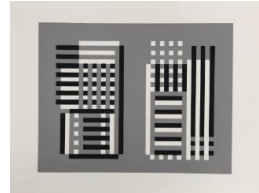


**Title: Formulation:**

**Articulation**

**Date:** 1972

**Primary Maker:** Josef Albers  
**Medium:** Serigraph images on Mohawk 140 lb. superfine specially made paper

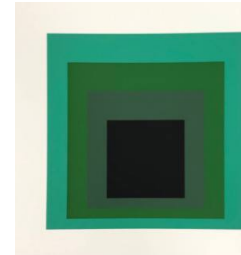


**Title: Formulation:**

**Articulation**

**Date:** 1972

**Primary Maker:** Josef Albers  
**Medium:** Serigraph images on Mohawk 140 lb. superfine specially made paper

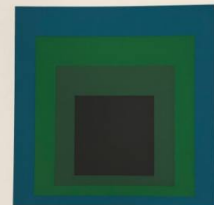


**Title: Formulation:**

**Articulation**

**Date:** 1972

**Primary Maker:** Josef Albers  
**Medium:** Serigraph images on Mohawk 140 lb. superfine specially made paper

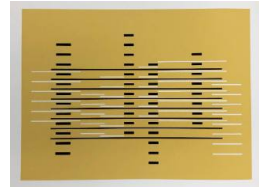


**Title: Formulation:**

**Articulation**

**Date:** 1972

**Primary Maker:** Josef Albers  
**Medium:** Serigraph images on Mohawk 140 lb. superfine specially made paper

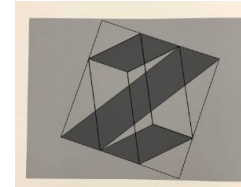


**Title: Formulation:**

**Articulation**

**Date:** 1972

**Primary Maker:** Josef Albers  
**Medium:** Serigraph images on Mohawk 140 lb. superfine specially made paper

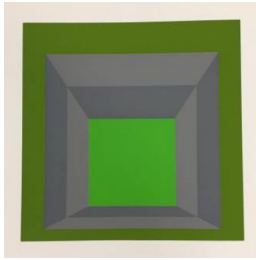


**Title: Formulation:**

**Articulation**

**Date:** 1972

**Primary Maker:** Josef Albers  
**Medium:** Serigraph images on Mohawk 140 lb. superfine specially made paper



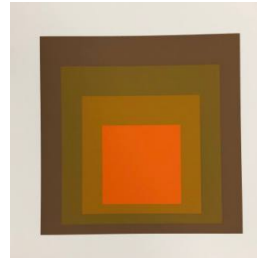
**Title: Formulation:**

**Articulation**

**Date:** 1972

**Primary Maker:** Josef Albers

**Medium:** Serigraph images on Mohawk 140 lb. superfine specially made paper



**Title: Formulation:**

**Articulation**

**Date:** 1972

**Primary Maker:** Josef Albers

**Medium:** Serigraph images on Mohawk 140 lb. superfine specially made paper



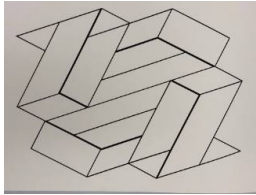
**Title: Formulation:**

**Articulation**

**Date:** 1972

**Primary Maker:** Josef Albers

**Medium:** Serigraph images on Mohawk 140 lb. superfine specially made paper



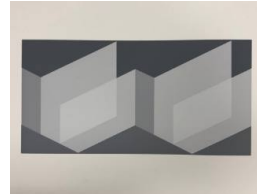
**Title: Formulation:**

**Articulation**

**Date:** 1972

**Primary Maker:** Josef Albers

**Medium:** Serigraph images on Mohawk 140 lb. superfine specially made paper



**Title: Formulation:**

**Articulation**

**Date:** 1972

**Primary Maker:** Josef Albers

**Medium:** Serigraph images on Mohawk 140 lb. superfine specially made paper



**Title: Formulation:**

**Articulation**

**Date:** 1972

**Primary Maker:** Josef Albers

**Medium:** Serigraph images on Mohawk 140 lb. superfine specially made paper



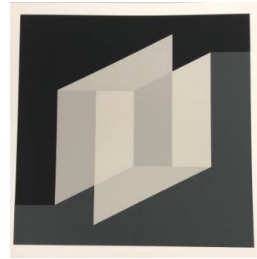
**Title: Formulation:**

**Articulation**

**Date:** 1972

**Primary Maker:** Josef Albers

**Medium:** Serigraph images on Mohawk 140 lb. superfine specially made paper



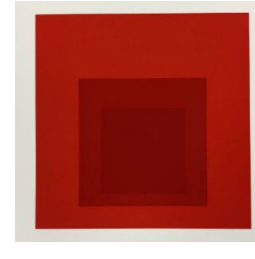
**Title: Formulation:**

**Articulation**

**Date:** 1972

**Primary Maker:** Josef Albers

**Medium:** Serigraph images on Mohawk 140 lb. superfine specially made paper



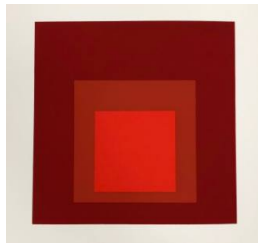
**Title: Formulation:**

**Articulation**

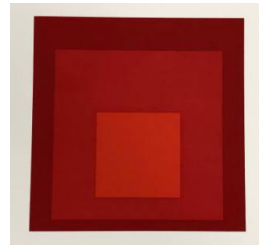
**Date:** 1972

**Primary Maker:** Josef Albers

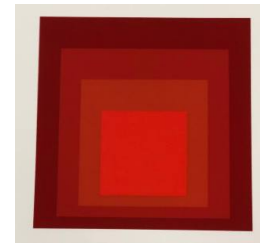
**Medium:** Serigraph images on Mohawk 140 lb. superfine specially made paper



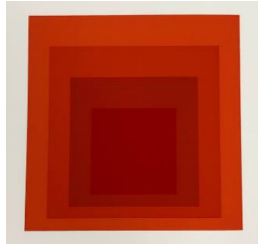
**Title: Formulation:  
Articulation**  
**Date:** 1972  
**Primary Maker:** Josef Albers  
**Medium:** Serigraph images on  
Mohawk 140 lb. superfine  
specially made paper



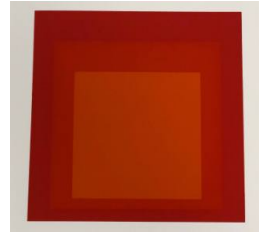
**Title: Formulation:  
Articulation**  
**Date:** 1972  
**Primary Maker:** Josef Albers  
**Medium:** Serigraph images on  
Mohawk 140 lb. superfine  
specially made paper



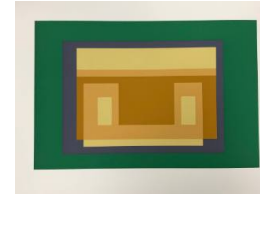
**Title: Formulation:  
Articulation**  
**Date:** 1972  
**Primary Maker:** Josef Albers  
**Medium:** Serigraph images on  
Mohawk 140 lb. superfine  
specially made paper



**Title: Formulation:  
Articulation**  
**Date:** 1972  
**Primary Maker:** Josef Albers  
**Medium:** Serigraph images on  
Mohawk 140 lb. superfine  
specially made paper



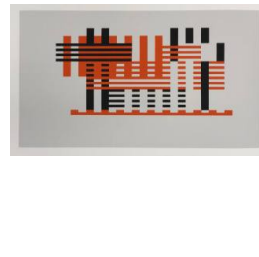
**Title: Formulation:  
Articulation**  
**Date:** 1972  
**Primary Maker:** Josef Albers  
**Medium:** Serigraph images on  
Mohawk 140 lb. superfine  
specially made paper



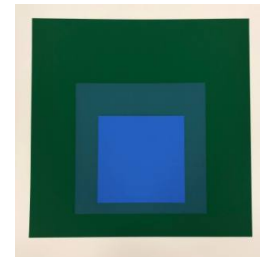
**Title: Formulation:  
Articulation**  
**Date:** 1972  
**Primary Maker:** Josef Albers  
**Medium:** Serigraph images on  
Mohawk 140 lb. superfine  
specially made paper



**Title: Formulation:  
Articulation**  
**Date:** 1972  
**Primary Maker:** Josef Albers  
**Medium:** Serigraph images on  
Mohawk 140 lb. superfine  
specially made paper

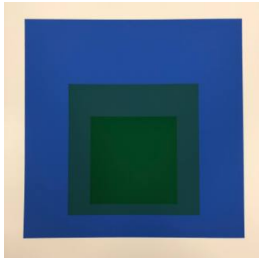


**Title: Formulation:  
Articulation**  
**Date:** 1972  
**Primary Maker:** Josef Albers  
**Medium:** Serigraph images on  
Mohawk 140 lb. superfine  
specially made paper



**Title: Formulation:  
Articulation**  
**Date:** 1972  
**Primary Maker:** Josef Albers  
**Medium:** Serigraph images on  
Mohawk 140 lb. superfine  
specially made paper

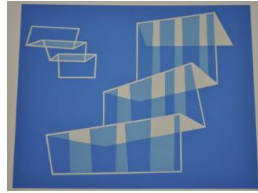




**Title: Formulation:  
Articulation**

**Date:** 1972

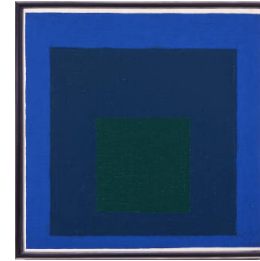
**Primary Maker:** Josef Albers  
**Medium:** Serigraph images on  
Mohawk 140 lb. superfine  
specially made paper



**Title: Formulation:  
Articulation**

**Date:** 1972

**Primary Maker:** Josef Albers  
**Medium:** Serigraph images on  
Mohawk 140 lb. superfine  
specially made paper



**Title: Homage to the  
Square**

**Date:** 1962

**Primary Maker:** Josef Albers  
**Medium:** Oil on masonite in  
artist's-designed frame



**Title: Homage to the  
Square: Greene Myth**

**Date:** 1954

**Primary Maker:** Josef Albers  
**Medium:** Oil on board in  
original polished metal frame  
specified by the artist

**Title: I-S Va 2**

**Date:** 1969

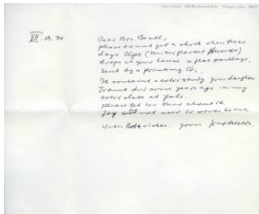
**Primary Maker:** Josef Albers  
**Medium:** Silkscreen



**Title: letter**

**Date:** n.d., 1969 - 1970

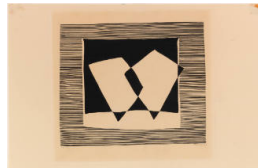
**Primary Maker:** Josef Albers  
**Medium:** Typewritten letter



**Title: letter**

**Date:** July 19, 1974

**Primary Maker:** Josef Albers  
**Medium:** Handwritten letter  
with envelope



**Title: Opera (Oper)**

**Date:** 1933

**Primary Maker:** Josef Albers  
**Medium:** Woodcut



**Title: Structural  
Constellation**

**Date:** circa 1955 - 1957

**Primary Maker:** Josef Albers  
**Medium:** Machine-engraved  
plastic laminate