

# Basic Report

---

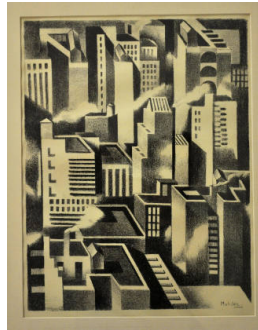


**Title:** Abstraction-Yellow Trees

**Date:** circa 1927 - 1930

**Primary Maker:** Jan Matulka

**Medium:** Gouache and pencil on wove paper



**Title:** Arrangement---New York, also titled Architecture of New York: New York

**Date:** circa 1925

**Primary Maker:** Jan Matulka

**Medium:** Lithograph



**Title:** Boat Scene in Central Park

**Date:** 1923

**Primary Maker:** Jan Matulka

**Medium:** Etching and drypoint



**Title:** Lady with Cat (Lida Matulka)

**Date:** mid- 1920s

**Primary Maker:** Jan Matulka

**Medium:** Conte crayon on light tan wove paper

**Title:** Landscape

**Date:** circa 1927 - 1930

**Primary Maker:** Jan Matulka

**Medium:** Pencil on wove paper

**Title:** Original Lithographic Plate for Arrangement---New York (also titled Architecture of New York: New York)

**Date:** circa 1925

**Primary Maker:** Jan Matulka

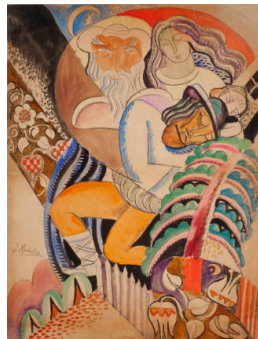
**Medium:** Lithographic zinc plate

**Title:** Turi Pole Landscape

**Date:** circa 1921

**Primary Maker:** Jan Matulka

**Medium:** Watercolor and conté crayon on paper



**Title:** Untitled (Czech folktale)

**Date:** probably 1919/1920

**Primary Maker:** Jan Matulka

**Medium:** Pencil and watercolor on wove paper



**Title:** Untitled (landscape)

**Date:** mid- 1920s

**Primary Maker:** Jan Matulka

**Medium:** Pencil on tan laid paper