

Basic Report



Title: Birth Bowl
Date: circa 1575
Primary Maker: Orazio Fontana
Medium: Polychrome tin-glazed earthenware (maiolica)

Title: Architectural Detail, Mold for Vase
Date: n.d.
Primary Maker: Unknown Artist
Medium: Stone

Title: Pitcher with Trefoil Lip
Date: 1899
Primary Maker: Rookwood Pottery, Cincinnati, Ohio
Medium: Glazed earthenware with underglaze slip-painted decoration over atomized slip ground (Rookwood Standard)

Title: Square Bowl
Date: circa 1960 - 1965
Primary Maker: Kawai Kanjiro
Medium: Glazed Shigaraki-type stoneware with three-color (black, green, red) glaze decoration

Title: Basket
Date: circa 1800
Primary Maker: Wedgwood
Medium: Creamware

Title: Basket
Date: circa 1800
Primary Maker: Wedgwood
Medium: Creamware

Title: Basket
Date: circa 1800
Primary Maker: Wedgwood
Medium: Creamware

Title: Bowl
Date: circa 1928
Primary Maker: Steingutfabriken Velten-Vordamm, Berlin, Germany
Medium: Glazed earthenware with polychrome decoration



Title: Pitcher
Date: circa 1928
Primary Maker: Steingutfabriken Velten-Vordamm, Berlin, Germany
Medium: Glazed earthenware with polychrome decoration



Title: "Hollstein Service"
Coffee Pot
Date: circa 1938
Primary Maker: Villeroy & Boch
Medium: Glazed slip-cast earthenware with partial monochrome (pale blue) decoration



Title: "Hollstein Service"
Tea Pot
Date: circa 1938
Primary Maker: Villeroy & Boch
Medium: Glazed slip-cast earthenware with partial monochrome (dark blue) decoration



Title: Cocoa Pot
Date: circa 1935
Primary Maker: Villeroy & Boch
Medium: Glazed slip-cast earthenware with partial monochrome (pale blue) decoration

Title: Plate

Date: circa 1930 - 1935
Primary Maker: Karlsruhe Maiolica Factory
Medium: Earthenware with slip-painted decoration

Title: Plate

Date: circa 1930 - 1935
Primary Maker: Karlsruhe Maiolica Factory
Medium: Earthenware with slip-painted decoration

Title: Plate

Date: circa 1930 - 1935
Primary Maker: Karlsruhe Maiolica Factory
Medium: Earthenware with slip-painted decoration

Title: Plate

Date: circa 1930
Primary Maker: HB-Werkstätten für Keramik
Medium: Glazed earthenware with polychrome decoration



Title: Punch Bowl

Date: 1925 - 1926
Primary Maker: Theodor Bogler
Medium: Glazed earthenware

Title: Footed Bowl

Date: 1925 - 1926
Primary Maker: Theodor Bogler
Medium: Glazed earthenware with polychrome decoration

Title: Four-Lobed Tray

Date: 1925 - 1926

Primary Maker: Theodor Bogler

Medium: Glazed earthenware with polychrome decoration

Title: Two-Lobed Oval Tray

Date: 1925 - 1926

Primary Maker: Theodor Bogler

Medium: Glazed earthenware with polychrome decoration

Title: "Haarlem Service" Tea Pot

Date: 1932 (design, in production since 1932, these pieces after 1945)

Primary Maker: Ursula Fesca

Medium: Glazed slip-cast earthenware with duotone (black, pale cream yellow) decoration and ebonized cane tea pot handle



Title: "Zürich Service" Coffee Pot

Date: circa 1935

Primary Maker: Hermann Gretsch

Medium: Glazed slip-cast earthenware with partial monochrome (dark blue) decoration, from the so-called Zürich Service ('Karlsruhe' design)



Title: "Zürich Service" Tea Pot

Date: circa 1935

Primary Maker: Hermann Gretsch

Medium: Glazed slip-cast earthenware with partial monochrome (pale blue) decoration, from the so-called Zürich Service ('Karlsruhe' design)

Title: Coffee Pot

Date: 1929 (design, in production 1929 - 1962)

Primary Maker: Otto Lindig

Medium: Glazed slip-cast earthenware



Title: Tea Pot

Date: 1929 (design, in production 1929 - 1962)

Primary Maker: Otto Lindig

Medium: Glazed slip-cast earthenware

Title: Tea Pot

Date: 1929 (design; in production 1929 - 1962)

Primary Maker: Otto Lindig

Medium: Glazed slip-cast earthenware



Title: Tea Pot

Date: 1929 (design, in production 1929 - 1962)

Primary Maker: Otto Lindig

Medium: Glazed slip-cast earthenware

Title: Bowl

Date: 1929 (design, in production 1929 - 1962?)
Primary Maker: Otto Lindig
Medium: Glazed slip-cast earthenware

Title: Bowl

Date: 1929 (design, in production 1929 - 1962?)
Primary Maker: Otto Lindig
Medium: Glazed slip-cast earthenware

Title: Bowl

Date: 1929 (design, in production 1929 - 1962?)
Primary Maker: Otto Lindig
Medium: Glazed slip-cast earthenware

Title: Plate

Date: 1929 (design, in production 1929 - 1962?)
Primary Maker: Otto Lindig
Medium: Glazed slip-cast earthenware

Title: Plate

Date: 1929 (design, in production 1929 - 1962?)
Primary Maker: Otto Lindig
Medium: Glazed slip-cast earthenware

Title: Plate

Date: 1929 (design, in production 1929 - 1962?)
Primary Maker: Otto Lindig
Medium: Glazed slip-cast earthenware

Title: Plate

Date: 1929 (design, in production 1929 - 1962?)
Primary Maker: Otto Lindig
Medium: Glazed slip-cast earthenware

Title: Cup and Saucer

Date: 1929 (design, in production 1929 - 1962)
Primary Maker: Otto Lindig
Medium: Glazed slip-cast earthenware

Title: Coffee Cup and Saucer

Date: 1929 (design, in production 1929 - 1962)
Primary Maker: Otto Lindig
Medium: Glazed slip-cast earthenware

Title: Coffee Cup and Saucer

Date: 1929 (design, in production 1929 - 1962)
Primary Maker: Otto Lindig
Medium: Glazed slip-cast earthenware



Title: Cocoa Pot

Date: 1923 (design and probable manufacture)
Primary Maker: Otto Lindig
Medium: Glazed cast stoneware (pot) and hand-turned with hand-finishing on the potter's wheel (lid)

Title: Covered Butter

Dish: Dish
Date: circa 1905
Primary Maker: Josef Böck
Medium: Glazed porcelain with overglaze enamel decoration

Title: Covered Butter

Dish: Cover
Date: circa 1905
Primary Maker: Josef Hoffmann
Medium: Glazed porcelain with overglaze enamel decoration

Title: Sherd

Date: n.d.
Primary Maker: Unknown Artist
Medium: Earthenware with slip-painted decoration

Title: Sherd

Date: n.d.
Primary Maker: Unknown Artist
Medium: Ceramic



Title: Holy Water Stoup

Date: 18th century
Primary Maker: Unknown Artist
Medium: Modeled earthenware with partial glazing and traces of gilding



Title: Footed Bowl

Date: n.d.
Primary Maker: Beatrice Wood
Medium: Glazed earthenware

Title: Footed Bowl

Date: circa 1948
Primary Maker: Marguerite Friedländer Wildenhain
Medium: Glazed stoneware with incised decoration



Title: Covered Jar

Date: n.d.

Primary Maker: Shoji Hamada

Medium: Salt-glazed earthenware with cobalt blue and comb decoration



Title: Vase

Date: n.d.

Primary Maker: Emile Decoeur

Medium: Glazed porcelain

Title: Vase

Date: n.d.

Primary Maker: Hacik

Gamityan

Medium: Ceramic, brown black glaze

Title: Bowl

Date: 1940s - 1950s

Primary Maker: Wilhelm Kåge

Medium: Glazed stoneware decorated with incised fish

Title: Bowl

Date: 1940s - 1950s

Primary Maker: Wilhelm Kåge

Medium: Glazed stoneware with incised fish decoration



Title: Vase

Date: 1930s

Primary Maker: Wilhelm Kåge

Medium: Glazed stoneware



Title: Bowl

Date: 1930

Primary Maker: Wilhelm Kåge

Medium: Glazed stoneware with slip-painted decoration (Farstaware)



Title: Bottle-Shaped Vase

Date: 1920 - 1924

Primary Maker: Wilhelm Kåge

Medium: Brown and black glazed stoneware

Title: Vase

Date: 1946

Primary Maker: Maija Grotell

Medium: Glazed blue porcelain

Title: Vase

Date: n.d.

Primary Maker: Clyde Burt

Medium: Ceramic, white, brown, blue



Title: Vase

Date: circa 1960

Primary Maker: Win Ng

Medium: Glazed earthenware with slip-painted decoration



Title: Plate

Date: circa 1950

Primary Maker: Edwin Scheier

Medium: Glazed stoneware with underglaze slip-painted decoration



Title: Madonna and Child

Date: n.d.

Primary Maker: Guido Gamboni

Medium: Glazed ceramic



Title: Owl

Date: 1954

Primary Maker: Francois Raty

Medium: Stoneware



Title: Bottle

Date: circa 1300 - 1428

Medium: Burnished unglazed earthenware



Title: Bottle

Date: circa 1300 - 1438

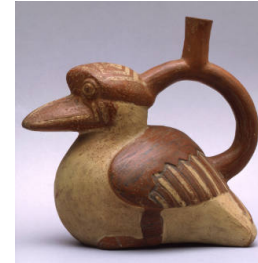
Medium: Burnished unglazed earthenware



Title: Stirrup Vessel

Date: 5th - 6th century

Medium: Earthenware with slip-painted decoration



Title: Stirrup Vessel

Date: 5th - 6th century

Medium: Earthenware with slip-painted decoration



Title: Bowl
Date: n.d.
Primary Maker: Otto Natzler
Medium: Glazed earthenware



Title: Canary Lustre Cup
Date: circa 1831
Primary Maker: Unknown
Artist
Medium: Glazed earthenware
with canary yellow glaze and
silver resist lustre design

Title: Bowl
Date: circa 1745 - 1760
Primary Maker: Bow
Porcelain Factory
Medium: Porcelain with
overglaze enamel painting



Title: Long-necked
Spouted Ewer
Date: circa 2000 B.C.E. - 1 B.
C.E.
Medium: Unglazed
earthenware

Title: Plate in the
Rococo Revival Style
Date: circa 1835
Primary Maker: Mason and
Sons
Medium: Glazed Ironstone
with overglaze transfer-printed
and gilded decoration

Title: Charger, The
Golden Flower Pot (De
Vergulde Bloempot)
Date: 1734 - 1764
Primary Maker: Unknown
Artist
Medium: Blue and yellow tin-
glazed earthenware (delftware)



Title: Plate
Date: circa 1960
Primary Maker: Jean Lurçat
Medium: Glazed earthenware



Title: Plate
Date: circa 1960
Primary Maker: Jean Lurçat
Medium: Glazed earthenware



Title: Jacqueline's Profile
Date: 1956
Primary Maker: Pablo Picasso
Medium: Molded glazed
earthenware



Title: Bowl
Date: 1965
Primary Maker: Otto Natzler
Medium: Earthenware, green



Title: Bowl
Date: 1964
Primary Maker: Otto Natzler
Medium: Glazed earthenware



Title: Bowl
Date: 1960
Primary Maker: Otto Natzler
Medium: Glazed earthenware



Title: Pitcher
Date: late 18th century
Medium: Ceramic, green, gold and cream



Title: Tall Vase
Date: 1908
Primary Maker: Kitaro Shirayamadani
Medium: Earthenware with slip-painted decoration under a matte vellum glaze



Title: Dessert Bowl
Date: 1916 - 1922 (design, facsimile by Noritake, Japan, 1962)
Primary Maker: Frank Lloyd Wright
Medium: Porcelain with polychrome decoration (red, yellow, gray and green)



Title: Pygmalion and Galatea (after Etienne-Maurice Falconet)

Date: 1764 - 1973

Primary Maker: Sèvres Porcelain Manufactory

Medium: Sèvres bisquit porcelain, hard paste

Title: Bottle

Date: circa 16th century

Primary Maker: Unknown

Artist

Medium: Stoneware



Title: Bowl

Date: circa 1960

Primary Maker: Otto Natzler

Medium: Earthenware with uranium glaze



Title: Shell-Form Bowl and Platter

Date: circa 1733

Primary Maker: Juste-Aurèle Meissonnier

Medium: Glazed soft-paste porcelain



Title: Tumbler Vase

Date: n.d.

Primary Maker: Eugene Deutsch

Medium: Glazed earthenware (?) or stoneware (?)

Title: Bottle

Date: 1960s

Primary Maker: Rose Cabat

Medium: Glazed porcelain

Title: Tall Footed Bowl

Date: n.d.

Primary Maker: Maija Grotell

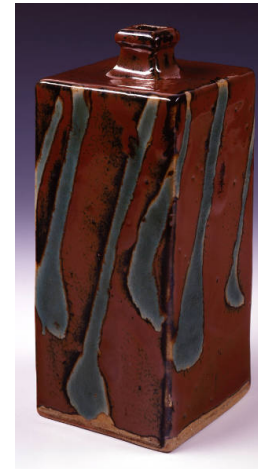
Medium: Glazed stoneware

Title: Bowl

Date: circa 1960

Primary Maker: Otto Natzler

Medium: Glazed earthenware, iridescent sang reduction and moss green glaze



Title: Square Bottle

Date: circa 1950

Primary Maker: Shoji Hamada

Medium: Glazed stoneware with bamboo-sprout pattern

Title: Bottle

Date: 1950 - 1959

Primary Maker: Aaron Bohrod

Medium: Glazed stoneware



Title: Covered Jar

Date: n.d.

Primary Maker: Bernard Leach

Medium: Earthenware with Tenmoku (Japanese dark brown to black) glaze and wax-resist decoration



Title: Bowl

Date: circa 1940

Primary Maker: Glen Lukens

Medium: Partially glazed earthenware



Title: Cup

Date: n.d.

Primary Maker: David Leach

Medium: Glazed stoneware with underglaze slip-painted decoration



Title: Actor's Mask of a Comic Old Man or Mask of Dionysus

Date: circa 4th century B.C.E.

Medium: Earthenware

Title: Statuette

Fragment: Bull or Dog (?)

Date: circa mid- 5th century B. C.E.

Medium: Earthenware



Title: Architectural Ornament with Brick Surround

Date: 1884

Primary Maker: Louis H. Sullivan

Medium: Terracotta ornament, disassembled

Title: Head of a Woman

Date: n.d.

Medium: Earthenware



Title: Covered Jar

Date: 1956 - 1957

Primary Maker: Peter Voulkos

Medium: Glazed stoneware with negative stencil relief and underglaze iron-oxide slip- and cobalt blue slip-painted decoration



Title: Covered Urn-Shaped Vase

Date: 19th century

Primary Maker: W. Schindler

Medium: Glazed porcelain with underglaze enamel and overglaze gilt decoration

Title: Covered Urn-Shaped Vase

Date: 19th century

Primary Maker: W. Schindler

Medium: Glazed porcelain with underglaze enamel and overglaze gilt decoration



Title: Sauce Boat

Date: 1861 - 1862

Primary Maker: Sèvres Porcelain Manufactory

Medium: Glazed porcelain with overglaze gilt decoration



Title: Vase

Date: circa 1910 - 1915

Primary Maker: Turn-Teplitz Factory

Medium: Glazed porcelain with overglaze gilt decoration

Title: Plate

Date: circa 1790

Primary Maker: Wedgwood

Medium: Creamware with blue and brown painted decoration



Title: Tea Bowl and Saucer

Date: 1783 - 1792

Primary Maker: Royal Worcester Porcelain factory

Medium: Hard-paste porcelain with overglaze enamel and gilt decoration

Title: Plate

Date: circa 1760 - 1780

Primary Maker: Unknown Artist

Medium: Tin-glazed earthenware with blue decoration

Title: Plate

Date: circa 1820

Primary Maker: Davenport Porcelain Company

Medium: Earthenware with blue transfer print decoration

Title: Plate

Date: circa 1810 - 1815

Primary Maker: Spode Ceramic Works

Medium: Earthenware with blue transfer decoration

Title: Oil Lamp

Date: 1st century

Medium: Terracotta



Title: Exterior Architectural Ornament for Window

Date: 1884

Primary Maker: Louis H. Sullivan

Medium: Unglazed terracotta



Title: Waster

Date: late 13th - early 14th century

Medium: Glazed stoneware, with off-white slip, dark brown...

Title: Bowl

Date: n.d.

Medium: Earthenware with slip-painted decoration



Title: Covered Tureen and Platter

Date: circa 1765

Medium: Porcelain with overglaze enamel decoration



Title: Dog Attacking a Bull

Date: n.d.

Primary Maker: Dominikus Auliczek

Medium: Hard-paste porcelain

Title: Mushroom Vender

Date: 19th century

Primary Maker: Nymphenburg Porcelain Factory

Medium: Porcelain figure

Title: Marcolini Potpourri Dish

Date: n.d.



Title: Stoneware Tankard

Date: 1709

Primary Maker: C.W. Gun

Medium: Stoneware and pewter



Title: Tankard
Date: 1701
Medium: Blue tin-glazed earthenware (faience) with pewter lid

Title: Plate with Basket Weave Border
Date: 1759 - 1762
Primary Maker: Frankenthal Porcelain Factory
Medium: Gilt porcelain



Title: Plate
Date: circa 1810 - 1815
Primary Maker: Königliche Porzellan-Manufaktur
Medium: Hard-paste porcelain with overglaze enamel and gilt decoration

Title: Cup and Saucer
Date: circa 1730



Title: Adam and Eve in Paradise (Historia von Adam und Eva)
Date: 1745 (design), 1774 - 1813 (execution)
Primary Maker: Johann Friedrich Eberlein
Medium: Hard-paste porcelain with overglaze enamel decoration

Title: Covered Sauce Dish
Date: circa 1820
Primary Maker: Spode Ceramic Works
Medium: Ironstone with transfer print and overglaze enamel decoration

Title: Plate
Date: circa 1880
Primary Maker: M. Grund
Medium: Porcelain with overglaze enamel and gilt

Title: Bowl
Date: possibly 20th century
Primary Maker: Haviland & Co.
Medium: Porcelain

Title: Platter
Date: 20th century?
Primary Maker: Haviland & Co.
Medium: Porcelain

Title: Small Bowl

Date: 20th century?

Primary Maker: Haviland & Co.

Medium: Porcelain



Title: Bowl

Date: circa 1775

Primary Maker: Frankenthal Porcelain Factory

Medium: Hard-paste porcelain with overglaze enamel and gilt decoration



Title: Two-Handled Bowl

Date: 6th century B.C.E.? or later

Medium: Earthenware with slip-painted decoration

Title: Fragment of a Panathenaic Amphora

Date: circa late 6th century B. C.E.

Medium: Reddish clay with dark paint

Title: Covered Vanity Dish

Date: circa 1905

Primary Maker: Keramos

Medium: Glazed earthenware

Title: Low Fluted Bowl

Date: 1928

Primary Maker: Lorinda Epply

Medium: Glazed porcelain

Title: Cup and Saucer

Date: 1832 - 1838

Primary Maker: Tucker & Hemphill, Philadelphia, Pennsylvania

Title: Cup and Saucer

Date: circa 1839

Primary Maker: Herend factory, Hungarian

Medium: Porcelain with glazed, gilt and overglaze painted decoration



Title: Saucer

Date: second half of 18th century

Primary Maker: Ludwigsburg Pottery & Porcelain Factory

Medium: Porcelain

Title: Rectangular Platter

Date: circa 1835?

Primary Maker: Mason Factory

Medium: Ironstone, hand-painted



Title: Inkstand and Tray

Date: circa 1850?

Primary Maker: Mason Factory

Medium: Ironstone, with imari decoration

Title: Covered Tureen and Platter

Date: circa 1875?

Primary Maker: Mason Factory

Medium: Ironstone, with transfer print decoration

Title: Plates

Date: 1930

Primary Maker: Wedgwood

Medium: Porcelain, pink and cream floral decoration

Title: Large Jug

Date: circa 1820

Primary Maker: Unknown

Artist

Medium: Lustreware, copper lustre, yellow bands

Title: Figure of a Woman

Date: mid- 18th century

Medium: White, salt-glazed stoneware, moulded

Title: Plate

Date: circa 1760

Primary Maker: John Bristol Bowen

Medium: Blue tin-glazed earthenware (delftware)



Title: Plate

Date: circa 1750

Primary Maker: Unknown

Artist

Medium: Blue tin-glazed earthenware (delftware)

Title: Plate

Date: mid- 18th century

Primary Maker: Unknown

Artist

Medium: Tin-glazed earthenware with polychrome decoration

Title: Fragment of a Bowl

Date: n.d.

Medium: Earthenware with red and black paint



Title: Square Bowl

Date: circa 1950

Primary Maker: Shoji Hamada

Medium: Glazed stoneware with slip-painted and overglaze enamel (red, green) decoration

Title: Vase

Date: circa 1940

Primary Maker: Wilhelm Kåge

Medium: Glazed stoneware (Farstaware)

Title: Vase

Date: circa 1940

Primary Maker: Wilhelm Kåge

Medium: Glazed stoneware (Farstaware)

Title: Vase

Date: circa 1940

Primary Maker: Wilhelm Kåge

Medium: Glazed stoneware (Farstaware)

**Title: Breakfast Set:
Coffee Pot, Creamer,
Sugar Bowl, Cups and
Saucers**

Date: circa 1830

Primary Maker: Dalovice
(Dallwitz) factory

Medium: Porcelain with
overglaze enamel and gilt
decoration



Title: Covered Jar

Date: 1914

Primary Maker: Ruskin Pottery

Medium: Iridescent glazed
earthenware

Title: Beaker Matchpot

Date: circa 1810

Primary Maker: Spode
Ceramic Works

Medium: Porcelain with
overglaze enamel and gilt
decoration

**Title: Two Handled
Loving Cup**

Date: circa 1816

Primary Maker: Grainger and
Company

Medium: Partial gilt porcelain
with transfer decoration

Title: Plate

Date: circa 1770 - 1775

Medium: Transfer printed
porcelain with pine cone pattern

Title: Bowl

Date: n.d.

Medium: Porcelain,
underglaze blue and enamel
painting with gilt



Title: Plate

Date: 1748

Medium: Blue tin-glazed
earthenware (delftware)

Title: Puzzle Jug

Date: circa 1750

Medium: Blue and white
delftware



Title: Plate

Date: circa 1750

Medium: Polychromed
delftware

Title: Charger

Date: 1750 - 1760

Medium: Polychrome tin-
glazed earthenware (delftware)

Title: Plate

Date: circa 1760

Medium: Blue tin-glazed
earthenware (delftware)

Title: Bowl

Date: 1770 - 1780

Medium: Blue tin-glazed
earthenware (delftware)

Title: Bowl

Date: 1770 - 1780

Medium: Blue tin-glazed
earthenware (delftware)

Title: Ovoid Body Teapot

Date: circa 1810 - 1820

Medium: Platinum resist
earthenware

Title: Pitcher

Date: circa 1810 - 1820

Medium: Copper luster
earthenware with orange
transfer decoration

Title: Pair of Platters

Date: circa 1756

Primary Maker: Bow
Porcelain Factory

Medium: Porcelain with
overglaze enamel and gilt
decoration



**Title: Goat and Bee
Creamer**

Date: 1749

Medium: Painted porcelain

Title: Tea Pot and Lid

Date: circa 1770

Primary Maker: Chelsea-
Derby Porcelain Factory

Medium: Porcelain with
overglaze enamel and gilt
decoration

Title: Tea Pot

Date: circa 1800

Primary Maker: Rockingham
Ceramic Factory, England

Medium: Porcelain with
overglaze gilt decoration

**Title: Pair of Sweet Meat
Dishes**

Date: circa 1826

Primary Maker: Rockingham
Ceramic Factory, England

Medium: Painted and gilt
porcelain

Title: Milk Jug and Lid

Date: circa 1770

Primary Maker: Royal
Worcester Porcelain factory

Medium: Porcelain in
underglaze blue decoration

Title: Bowl

Date: circa 1770 - 1780

Primary Maker: Royal
Worcester Porcelain factory

Medium: Porcelain with
embossed and underglaze
blue decoration

Title: Cup**Date:** circa 1770**Primary Maker:** Sèvres

Porcelain Manufactory

Medium: Painted and gilt
porcelain

**Title: Feuille de Choux
Bowl****Date:** circa 1748**Medium:** Partial gilt porcelain

**Title: Tea Bowl and
Saucer****Date:** circa 1727**Medium:** Painted and gilt
porcelain

Title: Coffee Pot**Date:** circa 1790 - 1810**Primary Maker:** Doccia

Porcelain Factory

Medium: Porcelain with
overglaze enamel and gilt
decoration

**Title: Sauce Boat Tray in
the "Persian" Design****Date:** circa 1886**Primary Maker:** Christopher
Dresser**Medium:** Glazed earthenware
with hand-enameled painting
on transfer-printed and
overglaze gilded decoration

Title: Pair of Tiles**Date:** 1870 - 1880**Primary Maker:** Minton
Ceramics Manufactory**Medium:** Porcelain with
overglaze enamel decoration

Title: Jug**Date:** 1960s**Primary Maker:** Francis Sho
Hiakatsu**Medium:** Glazed ceramic

Title: Saucer**Date:** circa 1834 - 1854**Primary Maker:** William
Ridgway & Co.**Medium:** Earthenware with
marcella transfer pattern

Title: Cup and Saucer**Date:** 20th century**Primary Maker:** Meissen
Porcelain Manufactory**Medium:** Glazed porcelain,
based on Marcolini shape

Title: After Dinner Cup and Saucer

Date: circa 1930 - 1940

Primary Maker: Jean Luce

Medium: Glazed porcelain with gold resist decoration

Title: Covered Vegetable Tureen

Date: 1875 - 1880

Primary Maker: Spode Ceramic Works

Medium: Glazed porcelain with transfer and hand-applied decoration ...

Title: Saucer (with Aesthetic Movement Pattern)

Date: circa 1880 - 1890

Primary Maker: Royal Worcester Porcelain factory

Medium: Glazed earthenware with transfer decoration and hand-applied color



Title: Turtle Soup Bowl

Date: circa 1900

Primary Maker: Moore Bros.

Medium: Glazed porcelain with gilt decoration



Title: Vase

Date: 1909

Primary Maker: Pilkingtons Tile and Pottery Company

Medium: Glazed earthenware



Title: Plate (with relief design of Diana in a Quadriga)

Date: circa 1790 - 1827

Primary Maker: Isleworth Porcelain Factory

Medium: Glazed molded earthenware



Title: Head Vase (Kantharos)

Date: circa 450 B.C.E.

Medium: Earthenware with slip-painted decoration



Title: Kantharos

Date: 4th century B.C.E.

Medium: Earthenware with uniform slip-painted decoration

Title: Rhyton: Satyr Head

Date: possibly 20th century reproduction cast from ancient mold

Medium: Earthenware with slip-painted and cold-painted decoration

Title: Tea Caddy

Date: circa 1775 - 1800

Primary Maker: Shorthose and Co.

Medium: Porcelain with blue transfer-printed decoration

Title: Black-Glazed Kylix

Date: circa 5th century B.C.E.

Medium: Earthenware with slip-painted decoration

Title: Man with

Tambourine

Date: early 20th century

Medium: Glazed polychrome ceramic

Title: Woman with Guitar

Date: early 20th century

Medium: Glazed polychrome ceramic

Title: Tazza

Date: 17th - 18th century

Medium: Tin-glazed earthenware

Title: Rhyton: Griffin Head

Date: n.d.

Medium: Earthenware with slip-painted decoration

Title: Bowl

Date: n.d.

Medium: Earthenware



Title: Cup

Date: n.d.

Medium: Earthenware with slip-painted decoration

Title: Bowl

Date: circa 3rd century B.C.E.

Medium: Earthenware with slip-painted decoration

Title: Amphora Handle
Date: circa 3rd century B.C.E.
Medium: Unglazed earthenware

Title: Vase Fragment
Date: circa 2nd century B.C.E.
Primary Maker: Unknown Artist
Medium: Partially glazed earthenware (Megarian ware)



Title: Conical Bowl
Date: 12th - 13th century
Medium: Glazed, high-fired earthenware, decorated in white slip over a frit body with underglaze blue and black painting

Title: Ceremonial Ritual Vessel
Date: 1973
Primary Maker: Rick Dillingham (James Richard II)
Medium: Biscuit fire clay with glazed interior

Title: Vase
Date: circa 1965
Primary Maker: Paul Edmund Soldner
Medium: Glazed and unglazed earthenware (raku technique)



Title: Pig
Date: n.d.
Medium: Mold-made earthenware with green glaze



Title: Jug
Date: n.d.
Medium: Earthenware

Title: Lamp
Date: circa second half of 6th century B.C.E.
Medium: Wheel-made and modeled earthenware with slip-painted decoration



Title: Funnel-Shaped Bowl
Date: circa 1945?
Primary Maker: Otto Natzler
Medium: Glazed earthenware

Title: Shepherdess

Date: n.d.

Primary Maker: Unknown

Artist

Medium: Ceramic with polychrome glaze

Title: Lamp

Date: circa late 6th or late 5th century B.C.E.

Medium: Wheel-made and modeled earthenware with slip-painted decoration

Title: Lamp Mold

Date: circa second half 6th century B.C.E.

Medium: Wheel-made and modeled earthenware

Title: Bowl

Date: 13th century

Medium: Glazed blue earthenware



Title: Jug

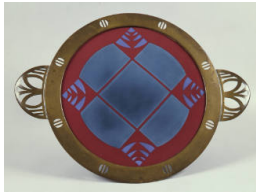
Date: n.d.

Medium: Earthenware with modeled and slip-painted decoration

Title: Askos

Date: n.d.

Medium: Earthenware with slip-painted decoration



Title: Cake Tray

Date: 1906

Primary Maker: Christian Neureuther

Medium: Glazed earthenware with die-cut and hand-wrought copper border and handles



Title: Ring Askos

Date: n.d.

Medium: Slip-painted earthenware with slip-painted decoration

Title: Spindle Whorl

Date: n.d.

Medium: Earthenware



Title: Cup
Date: 1908 - 1971
Primary Maker: Otto Natzler
Medium: Earthenware with blue-green glaze



Title: Small Cup
Date: 1908 - 1971
Primary Maker: Otto Natzler
Medium: Earthenware with blue-green glaze



Title: Free-form Dish
Date: 1908 - 1971
Primary Maker: Otto Natzler
Medium: Earthenware with blue-green glaze



Title: Fragment of a Bronze Ritual Vessel Casting Mold
Date: circa 13th - 11th century B.C.E.
Medium: Unglazed buff earthenware

Title: Plate
Date: circa 1760
Medium: Blue tin-glazed earthenware (delftware)

Title: Oil Lamp
Date: 4th - 5th century
Medium: Terracotta, with cross handle



Title: Oil Lamp
Date: 5th century
Medium: Terracotta, the cross handle

Title: Oil Lamp
Date: 5th century
Medium: Terracotta

Title: Oil Lamp
Date: 4th century
Medium: Terracotta

Title: Oil Lamp
Date: 5th - 6th century
Medium: Terracotta

Title: Oil Lamp
Date: 5th - 6th century
Medium: Terracotta

Title: Oil Lamp
Date: 5th - 6th century
Medium: Terracotta

Title: Oil Lamp
Fragment: Cross Handle
Date: 4th - 5th century
Medium: Terracotta

Title: Oil Lamp
Fragment: Handle
Date: 5th century
Medium: Terracotta

Title: Square Plate with Cut Corners
Date: 1900 - 1976
Primary Maker: Sakuma Totaro the Elder
Medium: Glazed earthenware with bamboo decoration (Mashiko kilns)

Title: Deep Square Bowl
Date: circa 1945 - 1950
Primary Maker: Sakuma Totaro the Elder
Medium: Glazed earthenware (Mashiko kilns)



Title: Li (tripod cooking vessel)
Date: circa 1000 B.C.E.
Medium: Unglazed earthenware with beaten cord-pattern decoration

Title: Seated Eros
Date: circa 2nd - 1st century B. C.E.
Medium: Earthenware

Title: Tripod Stand (?)

Date: n.d.

Medium: Slip-painted earthenware with cold-painted decoration



Title: Bowl

Date: 1908 - 1971

Primary Maker: Otto Natzler

Medium: Earthenware with 'Hares Fur' glaze of green and yellow



Title: North America

Date: circa 1900 - 1905

Primary Maker: Erich Hoesel

Medium: Hard paste porcelain with underglaze and overglaze enamel decoration



Title: Vase

Date: early 1960s (before 1964)

Primary Maker: Erik Pløen

Medium: Glazed stoneware

Title: Covered Butter Dish

Date: circa 1905

Primary Maker: Josef Böck

Medium: Porcelain with overglaze enamel decoration

Title: Lamp

Date: mid- 1st - 2nd century

Medium: Terracotta with remains of brown varnish

Title: Lamp

Date: mid- 1st - 2nd century

Medium: Terracotta with remains of brown varnish

Title: Lamp

Date: mid- 3rd - 4th century

Medium: Pink-buff terracotta, unglazed

Title: Lamp

Date: late 3rd - 4th century

Medium: Pink-buff terracotta with remains of brown varnish

Title: Lamp

Date: late 3rd century B.C.E.

Medium: Pink-buff terracotta
with brown varnish

Title: Lamp

Date: mid- 1st - 2nd century

Medium: Pink-buff terracotta
with remains of varnish

Title: Lamp

Date: mid- 1st - 2nd century

Medium: Brown-buff terracotta
with brown varnish remains

Title: Lamp

Date: late 1st century B.C.E. -
mid 1st century C.E.

Medium: Brown-buff terracotta
and brown varnish

Title: Lamp

Date: mid- 1st - 2nd century

Medium: Brown-buff terracotta
and brown varnish

Title: Lamp

Date: late 1st century B.C.E. -
mid 1st century C.E.

Medium: Brown-buff terracotta
with brown varnish

Title: Lamp

Date: mid- 1st - 2nd century

Medium: Pink-buff terracotta
with remains of brown varnish

Title: Lamp

Date: late 3rd - 2nd century B.
C.E.

Medium: Brown-buff terracotta
with remains of red varnish

**Title: Lamp with Eros
Figure on Discus**

Date: mid- 1st - 2nd century

Primary Maker: Unknown
Artist

Medium: Brown-buff terracotta
with remains of brown varnish

Title: Vase

Date: 20th century

Primary Maker: Sun Chao

Medium: Stoneware with zinc
crystalline glazes

Title: Vase

Date: 20th century

Primary Maker: Sun Chao

Medium: Stoneware with zinc
crystalline glazes



Title: Bowl

Date: 19th century

Medium: Porcelain with
overglaze polychrome enamel
decoration

Title: Vase Bowl

Date: n.d.

Primary Maker: Alison Britton

Medium: Glazed stoneware

Title: Bowl

Date: n.d.

Primary Maker: Sandy Brown

Medium: Partially glazed
stoneware

Title: Vase

Date: n.d.

Primary Maker: Trevor Corser

Medium: Glazed earthenware

Title: Foot

Date: n.d.

Primary Maker: Jill Crowley

Medium: Partially glazed
earthenware (raku ware)

Title: Sculptural Form

Date: n.d.

Primary Maker: Ewen

Henderson
Medium: Glazed earthenware

Title: Milk Jug and Lid

Date: n.d.

Primary Maker: Walter Keeler

Medium: Salt glaze
earthenware



Title: Square Dish
Date: n.d.
Primary Maker: John Maltby
Medium: Glazed earthenware

Title: Green Wedge
Date: n.d.
Primary Maker: Carol McNicoll
Medium: Glazed earthenware

Title: Ceramic Blade
Date: n.d.
Primary Maker: Richard Slee
Medium: Glazed porcelain



Title: Bowl
Date: n.d.
Primary Maker: Maria Stewart
Medium: Glazed porcelain

Title: Pierced Bowl
Date: n.d.
Primary Maker: Maria Stewart
Medium: Glazed porcelain



Title: Lidded Dish
Date: n.d.
Primary Maker: Angus Suttie
Medium: Glazed earthenware

Title: Sculpture
Date: n.d.
Primary Maker: Angus Suttie
Medium: Glazed earthenware

**Title: Lamp Fragment
(Section of Upper
Discus): Two Cupids
Playing, One Cupid on
the Lion's Back**
Date: n.d.
Medium: Slip-painted molded
earthenware

Title: Platter
Date: n.d.
Primary Maker: Janice
Tchalenko
Medium: Glazed stoneware

Title: Jug

Date: n.d.

Primary Maker: Janice
Tchalenko

Medium: Glazed stoneware



Title: Tall Bowl with Lid

Date: n.d.

Primary Maker: Sarah Walton

Medium: Glazed stoneware



Title: Hu jar

Date: circa 1st century B.C.E.

Medium: Unglazed
earthenware with incised and
applied decoration



Title: Funerary Vase

Date: 13th century

Primary Maker: Unknown

Artist

Medium: Yingqi ware (glazed
stoneware)

**Title: Lamp Fragment
(Section of Upper
Discus and Handle)**

Date: n.d.

Medium: Slip-painted molded
earthenware

**Title: Lamp Fragment
(Bottom and Side Wall)**

Date: 1st - 2nd century

Medium: Slip-painted
earthenware with incised
decoration

**Title: Lamp Fragment
(Reservoir Wall)**

Date: circa 500 - 450 B.C.E.

Medium: Slip-painted wheel-
made earthenware

Title: Lamp Fragment

Date: 4th - 3rd century B.C.E.

Medium: Wheel-made
earthenware

**Title: Lamp Fragments:
Nine Spouts**

Date: n.d.

Medium: Earthenware

**Title: Lamp Fragment:
Side Wall**

Date: n.d.

Medium: Slip-painted
earthenware

**Title: Lamp Fragment:
Side Wall and Base**

Date: n.d.

Medium: Earthenware with
slip-painted decoration

**Title: Lamp Fragment:
Rim and Volute Nozzle**

Date: n.d.

Medium: Slip-painted molded
earthenware

**Title: Lamp Fragment:
Side Wall**

Date: n.d.

Medium: Slip-painted
earthenware

**Title: Shell Lamp
Fragment: Rim and
Nozzle**

Date: circa 650 - 550 B.C.E.

Medium: Wheel-made
earthenware, hand-pressed to
shape after throwing

Title: Lamp

Date: n.d.

Medium: Molded earthenware
with cold-painted (?) decoration

Title: Funerary Vase

Date: 13th century

Primary Maker: Unknown
Artist

Medium: Yingqing ware
(glazed stoneware)

Title: Mask Jug

Date: circa 1765

Primary Maker: Royal
Worcester Porcelain factory
Medium: Soft-paste porcelain,
underglaze

**Title: Architectural
Fragment: Cornice**

Date: 1906

Primary Maker: Louis H.
Sullivan

Medium: Unglazed molded
terracotta

Title: Architectural
Fragment: Cornice
Date: 1906
Primary Maker: Louis H. Sullivan
Medium: Unglazed molded terracotta

Title: Cylindrical Vessel
Date: n.d.
Primary Maker: Polia Pillin
Medium: Earthenware with slip painted decoration

Title: Vase
Date: n.d.
Primary Maker: William Pillin
Medium: Earthenware with slip painted decoration



Title: Bowl
Date: n.d.
Primary Maker: Ruth Duckworth
Medium: Partially glazed stoneware



Title: Bowl
Date: early 1960s (before 1964)
Primary Maker: Erik Pløen
Medium: Glazed stoneware

Title: Alabastron
Date: n.d.
Medium: Slip-painted earthenware

Title: Plate
Date: circa 1960
Primary Maker: Jean Lurçat
Medium: Glazed earthenware

Title: Vessel Fragment:
Aryballos Bottom (?)
Date: n.d.
Primary Maker: Unknown Artist
Medium: Earthenware with slip-painted decoration



Title: Funerary Vessel
with Lid
Date: 13th century
Medium: Glazed stoneware with qingbai glaze and applied molded and modeled decoration



Title: Cup Stand

Date: 17th century

Medium: Buncheong (punch'ong) ware, glazed stoneware with white clay inlaid decoration (sanggam)

Title: Vase

Date: circa 1896

Primary Maker: Weller Pottery, Zanesville, Ohio

Medium: Glazed earthenware with underglaze slip-painted decoration (Louvelsa ware)



Title: Octagonal Dessert Plate in the Gothic Revival Manner

Date: circa 1849

Primary Maker: Augustus Welby Northmore Pugin

Medium: Glazed stoneware with molded relief and underglaze painted and overglaze gilded decoration

Title: Lamp

Date: circa 5th century B.C.E.

Medium: Earthenware with slip-painted decoration

Title: Vase

Date: 1912

Primary Maker: Rookwood Pottery, Cincinnati, Ohio

Medium: Glazed earthenware with slip-painted decoration



Title: Covered Urn

Date: late 19th century

Medium: Satsuma ware, porcelain with overglaze and gilt decoration

Title: Table Slab Vessel

Date: circa 1990

Primary Maker: Yasuhisa Kohyama

Medium: Cut and modeled Shigaraki stoneware with partial natural ash glaze

Title: Dish

Date: circa early 17th century

Medium: Porcelain with underglaze blue-and-white decoration

Title: Incense Box in the Shape of Crane

Date: late 19th - early 20th century

Medium: Unglazed modeled earthenware (Bizen ware)



Title: Bowl
Date: 1908 - 1971
Primary Maker: Otto Natzler
Medium: Glazed earthenware



Title: Oil Feeder (Guttus)
Date: circa 325 - 275 B.C.E.
Primary Maker: Unknown
Artist
Medium: Molded and modeled earthenware with applied, incised, and black slip-painted decoration



Title: Ding Tripod
Date: circa 1st century
Medium: Partially glazed stoneware



Title: Vase
Date: probably 1942 - 1947 or 1947 - 1949
Primary Maker: Marguerite Friedländer Wildenhain
Medium: Glazed stoneware



Title: Tea Bowl
Date: n.d.
Primary Maker: Deiryu Kutsu (Kanshu Sojun)
Medium: Glazed stoneware with underglaze slip-painted calligraphy



Title: Vase
Date: 1904 - 1914
Primary Maker: Cadmon Robertson
Medium: Glazed semi-porcelain

Title: Vase
Date: n.d.
Primary Maker: Otto Natzler
Medium: Glazed earthenware (iridescent black)

Title: Bowl
Date: n.d.
Primary Maker: Otto Natzler
Medium: Glazed earthenware (blue and rose)

Title: Shallow Bowl
Date: n.d.
Primary Maker: Otto Natzler
Medium: Glazed earthenware (orange and black uranium glaze)

Title: Shallow Squared Bowl

Date: n.d.

Primary Maker: Otto Natzler

Medium: Glazed earthenware (rosy/bluish gray)



Title: Vase

Date: n.d.

Primary Maker: Otto Natzler

Medium: Glazed earthenware

Title: Vase

Date: n.d.

Primary Maker: Otto Natzler

Medium: Glazed earthenware

Title: Sake Cup (with camellia decoration and poetic inscription)

Date: circa 1900

Primary Maker: Ito Tozan

Medium: Glazed porcelain with overglaze enamel, silver, and gilt decoration (Awata ware)



Title: Untitled

Date: 2003

Primary Maker: Gim Yi-kyung ()

Medium: Glazed porcelain with overglaze slip



Title: Vase

Date: circa 1940 (before 1943)

Primary Maker: Otto Natzler

Medium: Glazed earthenware



Title: Bowl

Date: circa 1948

Primary Maker: Bernard Leach

Medium: Glazed stoneware with slip-painted and incised decoration



Title: Pitcher

Date: 1937 (design, in production 1939 - circa 1959)

Primary Maker: Russel Wright

Medium: Cast glazed earthenware



Title: Cream Jug

Date: 1937 (design, in production 1939 - circa 1959)

Primary Maker: Russel Wright

Medium: Cast glazed earthenware (pinkish tan)



Title: Lidded Sugar Bowl

Date: 1937 (design, in production 1939 - circa 1959)
Primary Maker: Russel Wright
Medium: Cast glazed earthenware (pinkish tan)

Title: Lugged Jar

Date: circa 1950
Primary Maker: Shoji Hamada
Medium: Glazed stoneware with paddle and persimmon red (kaki) and green (copper oxide) glaze decoration



Title: Pot

Date: 11th - 13th century
Primary Maker: Unknown Artist
Medium: Glazed (brown) stoneware with incised decoration

Title: Covered Box

Date: 14th - 16th century
Primary Maker: Unknown Artist
Medium: Glazed stoneware with underglaze-brown decoration (Si Satchanalai ware)



Title: Vase

Date: 1927
Primary Maker: Gudrun Baudisch
Medium: Glazed earthenware



Title: Vase

Date: 1921
Primary Maker: Hilda Jesser
Medium: Glazed earthenware with slip-painted decoration



Title: Vase

Date: probably 1914
Primary Maker: Pilkingtons Tile and Pottery Company
Medium: Glazed earthenware

Title: Architectural Detail, Mold for Vase

Date: n.d.
Primary Maker: Unknown Artist
Medium: Stone



Title: Cup and Saucer

Date: 1923
Primary Maker: Sergei Chekhonin
Medium: Porcelain (pre-Revolution, imperial Russian blank) with underglaze and overglaze enamel decoration



Title: Carafe

Date: 1937 (design, in production 1939 - circa 1959)
Primary Maker: Russel Wright
Medium: Cast glazed earthenware



Title: Vase

Date: circa 1950
Primary Maker: David Leach
Medium: Stoneware with sgraffito and iron oxide slip-painted decoration under an ash glaze



Title: Vase

Date: 1916
Primary Maker: Ruskin Pottery
Medium: Iridescent glazed earthenware



Title: Coffee Pot

Date: circa 1922 - 1923 (probable design and manufacture)
Primary Maker: Otto Lindig
Medium: Hand-thrown stoneware (beige fabric) with transparent (yellowish white) inner glaze and dark brown outer glaze



Title: Untitled

Date: 1964
Primary Maker: Ruth Duckworth
Medium: Glazed hand-built stoneware



Title: Cover for Jar

Date: n.d.
Primary Maker: Bernard Leach
Medium: Earthenware with Tenmoku (Japanese dark brown to black) glaze and wax-resist decoration

Title: Four Lamp Fragments

Date: n.d.
Medium: Slip-painted earthenware



Title: Tea Pot

Date: 1946 (design, in production 1946 - circa 1965)
Primary Maker: Russel Wright
Medium: Cast glazed earthenware



Title: Gravy Boat

Date: 1937 (design, in production 1939 - circa 1959)
Primary Maker: Russel Wright
Medium: Cast glazed earthenware

Title: Tea Bowl

Date: circa 2005

Primary Maker: Cheon Han Bong

Medium: Glazed stoneware (buncheong)



Title: Decorative Architectural Block

Date: late 19th or early 20th century

Primary Maker: Louis H. Sullivan

Medium: Glazed terracotta



Title: Free-Form Bowl

Date: n.d.

Primary Maker: Gertrud Natzler

Medium: Glazed earthenware (iridescent black)



Title: Sake Bottle

Date: n.d. (probably circa 1990)

Primary Maker: Yasuhisa Kohyama

Medium: Shigaraki stoneware



Title: Small Bottle

Date: 1962 - 63

Primary Maker: Hiroaki Morino

Medium: Hand-thrown glazed stoneware with incised decoration



Title: Pitcher

Date: 1962 - 63

Primary Maker: Hiroaki Morino

Medium: Hand-thrown and shaped glazed stoneware



Title: Vase

Date: 1962 - 63

Primary Maker: Hiroaki Morino

Medium: Hand-thrown partially glazed stoneware



Title: Untitled [Landscape Sculptural Form]

Date: 1962 - 63

Primary Maker: Hiroaki Morino

Medium: Hand-built glazed stoneware with incised and perforated decoration



Title: Large Bowl

Date: 1963 - 64

Primary Maker: Erik Pløen

Medium: Glazed stoneware with incised decoration



Title: Shallow Bowl
Date: 1963 - 64
Primary Maker: Erik Pløen
Medium: Hand-thrown and shaped glazed stoneware



Title: Low Candlestick
Date: 1963 - 64
Primary Maker: Erik Pløen
Medium: Glazed stoneware



Title: Small Bowl
Date: 1962 - 63
Primary Maker: Hiroaki Morino
Medium: Hand-thrown glazed stoneware

Title: Low Candlestick
Date: 1963 - 64
Primary Maker: Erik Pløen
Medium: Glazed stoneware



Title: Imari Plate
Date: n.d.
Primary Maker: Unknown
Artist
Medium: Ceramic



Title: Imari Plate
Date: n.d.
Primary Maker: Unknown
Artist
Medium: Ceramic



Title: Imari Plate
Date: n.d.
Primary Maker: Unknown
Artist
Medium: Ceramic



Title: Imari Plate
Date: n.d.
Primary Maker: Unknown
Artist
Medium: Ceramic



Title: Imari Plate
Date: n.d.
Primary Maker: Unknown
Artist
Medium: Ceramic



Title: Imari Plate
Date: n.d.
Primary Maker: Unknown
Artist
Medium: Porcelain



Title: Imari Plate
Date: n.d.
Primary Maker: Unknown
Artist
Medium: Porcelain



Title: Imari Plate
Date: n.d.
Primary Maker: Unknown
Artist
Medium: Ceramic



Title: Imari Plate
Date: n.d.
Primary Maker: Unknown
Artist
Medium: Ceramic



Title: Imari Boat Dish
Date: circa 1800
Primary Maker: Unknown
Artist
Medium: Ceramic



Title: Imari Boat Dish
Date: circa 1800
Primary Maker: Unknown
Artist
Medium: Ceramic



Title: Imari Noodle Cup
Date: 19th century
Primary Maker: Unknown
Artist
Medium: Ceramic



Title: Imari Noodle Cup
Date: 19th century
Primary Maker: Unknown
Artist
Medium: Ceramic



Title: Imari Rectangular Dish
Date: circa 1800
Primary Maker: Unknown
Artist
Medium: Ceramic



Title: Imari Rectangular Dish
Date: circa 1800
Primary Maker: Unknown
Artist
Medium: Ceramic



Title: Imari Noodle Cup
Date: n.d.
Primary Maker: Unknown
Artist
Medium: Ceramic



Title: Imari Noodle Cup
Date: n.d.
Primary Maker: Unknown
Artist
Medium: Ceramic



Title: Imari Teapot
Date: n.d.
Primary Maker: Unknown
Artist
Medium: Ceramic



Title: Imari Creamer
Date: n.d.
Primary Maker: Unknown
Artist
Medium: Ceramic



Title: Imari Sugar Bowl with Lid
Date: n.d.
Primary Maker: Unknown
Artist
Medium: Ceramic



Title: Bowl
Date: n.d.
Primary Maker: Unknown
Artist
Medium: Porcelain



Title: Bowl
Date: n.d.
Primary Maker: Unknown
Artist
Medium: Porcelain



Title: Dish
Date: n.d.
Primary Maker: Unknown
Artist
Medium: Porcelain



Title: Bowl
Date: n.d.
Primary Maker: Unknown
Artist
Medium: Porcelain



Title: Bowl
Date: n.d.
Primary Maker: Unknown
Artist
Medium: Porcelain



Title: Imari Plate
Date: n.d.
Primary Maker: Unknown
Artist
Medium: Ceramic



Title: Untitled
Date: n.d.
Primary Maker: Ruth Duckworth
Medium: Ceramic



Title: Oil Lamp
Date: 5th - 6th century
Medium: Terracotta



Title: Oribe Water Basin
Date: late 19th century
Medium: Stoneware with applied modeled and underglaze iron oxide and green overglaze decoration (Oribe ware)



Title: Bowl
Date: circa 1948
Primary Maker: Marguerite Friedländer Wildenhain
Medium: Glazed stoneware with slip-painted and incised decoration



Title: Small Jug
Date: circa 1820
Primary Maker: Unknown
Artist
Medium: Lustreware, copper lustre, dark blue band



Title: Serving Dish
Date: 1900 - 1976
Primary Maker: Sakuma Totaro the Elder
Medium: Ceramic



Title: Large Bowl
Date: 1900 - 1976
Primary Maker: Sakuma Totaro the Elder
Medium: Glazed earthenware (Mashiko kilns)



Title: Vase
Date: n.d.
Primary Maker: Janet Leach
Medium: Glazed earthenware



Title: Large Bowl
Date: n.d.
Primary Maker: Henry Pim
Medium: Glazed stoneware



Title: Large Platter
Date: n.d.
Primary Maker: Janice Tchalenko
Medium: Glazed stoneware



Title: Leaf Platter
Date: n.d.
Primary Maker: Janice Tchalenko
Medium: Modeled and molded glazed earthenware



Title: Bowl
Date: n.d.
Primary Maker: Janice Tchalenko
Medium: Glazed earthenware



Title: Large Plate
Date: circa 1968
Primary Maker: Ruth Duckworth
Medium: Glazed stoneware



Title: Winter Tea Bowl
Date: 1894 - 1978
Primary Maker: Shoji Hamada
Medium: Glazed stoneware



Title: Centaur
Date: 1956
Primary Maker: Pablo Picasso
Medium: Molded partially glazed earthenware plate with engobe decoration



Title: Small Jug with Handle
Date: 1883
Primary Maker: Martin Rettig
Medium: Glazed stoneware with underglaze slip-painted decoration and overglaze gilded decoration



Title: Oil Lamp
Date: 5th - 6th century
Medium: Terracotta



Title: Deep Tea Bowl
Date: n.d.
Primary Maker: Komatsu, Koichiro
Medium: Glazed earthenware



Title: Vase
Date: n.d.
Primary Maker: Marguerite Friedländer Wildenhain
Medium: Hand-thrown stoneware with black inner and rim glaze, pale brown outer glaze under a clear glaze, and unglazed foot



Title: Vase
Date: n.d.
Primary Maker: Otto Lindig
Medium: Hand-thrown stoneware (sand-colored fabric) with cream inner glaze and mottled brown outer glaze



Title: Coffee Pot
Date: circa 1870s
Medium: Porcelain with polychrome and gilded overglaze decoration



Title: 3 porcelain figures
Date: n.d.
Primary Maker: Prima Vera Factory
Medium: Porcelain with silver lustre



Title: Figure with Guitar
Date: n.d.
Primary Maker: Prima Vera Factory
Medium: Porcelain with silver lustre



Title: Figure with Musical Instrument
Date: n.d.
Primary Maker: Prima Vera Factory
Medium: Porcelain with silver lustre



Title: Couple on Boat
Date: n.d.
Primary Maker: Prima Vera
Factory
Medium: Porcelain with silver
lustre



Title: Bowl
Date: 1900 - 1976
Primary Maker: Sakuma
Totaro the Elder
Medium: Glazed earthenware
(Mashiko kilns)



Title: Deep Tea Bowl
Date: n.d.
Primary Maker: Komatsu,
Koichiro
Medium: Glazed earthenware
(Naraoki kilns)



Title: Chun-Type Bowl
Date: n.d.
Primary Maker: Komatsu,
Koichiro
Medium: Glazed earthenware



Title: Bowl
Date: circa 1950
Primary Maker: Kenji Funaki
Medium: Glazed earthenware
with slip-painted decoration
(Fushina Kilns)



Title: Water Dropper
Date: n.d.
Primary Maker: Bando Toko ()
Medium: Glazed earthenware
with Neritage (marbleized)
decoration



Title: Deep Bowl
Date: n.d.
Primary Maker: Sakuma
Totaro the Younger
Medium: Glazed earthenware
(Mashiko kilns)



Title: Bowl
Date: 1900 - 1976
Primary Maker: Sakuma
Totaro the Elder
Medium: Glazed earthenware
(Mashiko kilns)



Title: Deep Bowl
Date: n.d.
Primary Maker: Sakuma the
Younger, Totaro
Medium: Glazed earthenware
(Mashiko kilns)



Title: Water Dropper
Date: 1900 - 1976
Primary Maker: Sakuma Totaro the Elder
Medium: Glazed earthenware (Mashiko kilns)



Title: Water Dropper
Date: n.d.
Primary Maker: Sakuma the Younger, Totaro
Medium: Glazed stoneware (Mashiko kilns)



Title: Water Dropper
Date: n.d.
Primary Maker: Sakuma the Younger, Totaro
Medium: Glazed earthenware (Mashiko kilns)



Title: Footed Bowl
Date: n.d.
Primary Maker: Sakuma Totaro the Younger
Medium: Glazed earthenware (Mashiko kilns)



Title: Irregular-Shaped Bowl
Date: 1883 - 1959
Primary Maker: Rosanjin, Kitaji
Medium: Glazed earthenware with Beni Shino glaze decoration (Mashiko ...)



Title: Irregular-Shaped Bowl
Date: 1883 - 1959
Primary Maker: Rosanjin, Kitaji
Medium: Glazed earthenware with Beni Shino decoration (Mashiko kilns)



Title: Bowl
Date: n.d.
Primary Maker: David Garland
Medium: Glazed earthenware



Title: Platter
Date: n.d.
Primary Maker: David Garland
Medium: Glazed earthenware



Title: Square Curved Flask
Date: n.d.
Primary Maker: Shinsaku Hamada
Medium: Glazed molded and modeled stoneware



Title: Maquette for "Earth, Water, Sky"
Date: 1968 - 1969
Primary Maker: Ruth Duckworth
Medium: Glazed stoneware and wood



Title: Sake Cup
Date: 1868
Primary Maker: tagaki Rengetsu
Medium: Hand-built glazed earthenware with calligraphic poem incised through glaze



Title: Untitled [vessel]
Date: probably late 1960s
Primary Maker: Ruth Duckworth
Medium: Partially glazed stoneware



Title: Funerary Vessel
Date: 13th century
Primary Maker: Unknown Artist
Medium: Yingqi ware (glazed stoneware)



Title: Tea Cup
Date: 1905 - 1999
Primary Maker: Bunsho Gitei (Kasumi)
Medium: Glazed stoneware with underglaze slip-painted calligraphy



Title: Tea Cup
Date: 1905 - 1999
Primary Maker: Bunsho Gitei (Kasumi)
Medium: Glazed stoneware with underglaze slip-painted calligraphy



Title: Tea Cup
Date: 1905 - 1999
Primary Maker: Bunsho Gitei (Kasumi)
Medium: Glazed stoneware with underglaze slip-painted calligraphy



Title: Tea Cup
Date: 1905 - 1999
Primary Maker: Bunsho Gitei (Kasumi)
Medium: Glazed stoneware with underglaze slip-painted calligraphy



Title: Tea Cup
Date: 1905 - 1999
Primary Maker: Bunsho Gitei (Kasumi)
Medium: Glazed stoneware with underglaze slip-painted calligraphy

Title: Partial Tea
Service: Creamer with Lid
Date: circa 1930s
Primary Maker: Nymphenburg Porcelain Factory
Medium: Porcelain (white, pale yellow)

Title: Partial Tea
Service: Sugar Bowl with Lid
Date: circa 1930s
Primary Maker: Nymphenburg Porcelain Factory
Medium: Porcelain (white, pale yellow)

Title: Partial Tea
Service: Stand
Date: circa 1930s
Primary Maker: Nymphenburg Porcelain Factory
Medium: Porcelain (white, pale yellow)

Title: Partial Tea
Service: Cup and Saucer
Date: circa 1930s
Primary Maker: Nymphenburg Porcelain Factory
Medium: Porcelain (white, pale yellow)

Title: Partial Tea
Service: Cup and Saucer
Date: circa 1930s
Primary Maker: Nymphenburg Porcelain Factory
Medium: Porcelain (white, pale yellow)

Title: Partial Tea
Service: Plate
Date: circa 1930s
Primary Maker: Nymphenburg Porcelain Factory
Medium: Porcelain (white, pale yellow)

Title: Partial Tea
Service: Plate
Date: circa 1930s
Primary Maker: Nymphenburg Porcelain Factory
Medium: Porcelain (white, pale yellow)

Title: Partial "Haarlem Service": Tea Pot with Lid
Date: 1932 (design, in production since 1932, these pieces before 1945)
Primary Maker: Ursula Fesca
Medium: Glazed slip-cast earthenware with duotone (black, creamy yellow) decoration and cane tea pot handle

Title: Partial "Haarlem Service": Sugar Bowl with Lid
Date: 1932 (design, in production since 1932, these pieces before 1945)
Primary Maker: Ursula Fesca
Medium: Glazed slip-cast earthenware with duotone (black, creamy yellow) decoration



Title: Partial "Haarlem Service": Cup and Saucer
Date: 1932 (design, in production since 1932, these pieces before 1945)
Primary Maker: Ursula Fesca
Medium: Glazed slip-cast earthenware with duotone (black, creamy yellow) decoration

Title: Partial "Haarlem Service": Plate
Date: 1932 (design, in production since 1932, these pieces before 1945)
Primary Maker: Ursula Fesca
Medium: Glazed slip-cast earthenware with duotone (black, creamy yellow) decoration

Title: Partial "Haarlem Service": Tea Pot with Lid
Date: 1932 (design, in production since 1932, these pieces after 1945)
Primary Maker: Ursula Fesca
Medium: Glazed slip-cast earthenware with monochrome (pale blue) decoration and cane tea pot handle

Title: Partial "Haarlem Service": Creamer
Date: 1932 (design, in production since 1932, these pieces after 1945)
Primary Maker: Ursula Fesca
Medium: Glazed slip-cast earthenware with monochrome (pale blue) decoration

Title: Partial "Haarlem Service": Sugar Bowl with Lid
Date: 1932 (design, in production since 1932, these pieces after 1945)
Primary Maker: Ursula Fesca
Medium: Glazed slip-cast earthenware with monochrome (pale blue) decoration

Title: Partial "Haarlem Service": Cup and Saucer
Date: 1932 (design, in production since 1932, these pieces after 1945)
Primary Maker: Ursula Fesca
Medium: Glazed slip-cast earthenware with monochrome (pale blue) decoration

Title: Partial "Haarlem Service": Cup and Saucer
Date: 1932 (design, in production since 1932, these pieces after 1945)
Primary Maker: Ursula Fesca
Medium: Glazed slip-cast earthenware with monochrome (pale blue) decoration

Title: Partial "Haarlem Service": Cup and Saucer
Date: 1932 (design, in production since 1932, these pieces after 1945)
Primary Maker: Ursula Fesca
Medium: Glazed slip-cast earthenware with monochrome (pale blue) decoration

Title: Partial "Haarlem Service": Cup and Saucer
Date: 1932 (design, in production since 1932, these pieces after 1945)
Primary Maker: Ursula Fesca
Medium: Glazed slip-cast earthenware with monochrome (pale blue) decoration

Title: Partial "Haarlem Service": Cup and Saucer

Date: 1932 (design, in production since 1932, these pieces after 1945)
Primary Maker: Ursula Fesca
Medium: Glazed slip-cast earthenware with monochrome (pale blue) decoration

Title: Partial "Haarlem Service": Cup and Saucer

Date: 1932 (design, in production since 1932, these pieces after 1945)
Primary Maker: Ursula Fesca
Medium: Glazed slip-cast earthenware with monochrome (pale blue) decoration

Title: Partial "Haarlem Service": Plate

Date: 1932 (design, in production since 1932, these pieces after 1945)
Primary Maker: Ursula Fesca
Medium: Glazed slip-cast earthenware with monochrome (pale blue) decoration

Title: Partial "Haarlem Service": Plate

Date: 1932 (design, in production since 1932, these pieces after 1945)
Primary Maker: Ursula Fesca
Medium: Glazed slip-cast earthenware with monochrome (pale blue) decoration

Title: Partial "Haarlem Service": Plate

Date: 1932 (design, in production since 1932, these pieces after 1945)
Primary Maker: Ursula Fesca
Medium: Glazed slip-cast earthenware with monochrome (pale blue) decoration

Title: Partial "Haarlem Service": Plate

Date: 1932 (design, in production since 1932, these pieces after 1945)
Primary Maker: Ursula Fesca
Medium: Glazed slip-cast earthenware with monochrome (pale blue) decoration

Title: Partial "Haarlem Service": Plate

Date: 1932 (design, in production since 1932, these pieces after 1945)
Primary Maker: Ursula Fesca
Medium: Glazed slip-cast earthenware with monochrome (pale blue) decoration

Title: Partial "Haarlem Service": Plate

Date: 1932 (design, in production since 1932, these pieces after 1945)
Primary Maker: Ursula Fesca
Medium: Glazed slip-cast earthenware with monochrome (pale blue) decoration

Title: Partial "Haarlem Service": Tea Pot

Date: 1932 (design, in production since 1932, these pieces after 1945)
Primary Maker: Ursula Fesca
Medium: Mat glazed slip-cast earthenware with duotone (black, yellow) decoration and cane tea pot handle

Title: Partial "Haarlem Service": Plate
Date: 1932 (design, in production since 1932, these pieces after 1945)
Primary Maker: Ursula Fesca
Medium: Mat glazed slip-cast earthenware with duotone (black, yellow) decoration

Title: Partial "Haarlem Service": Plate
Date: 1932 (design, in production since 1932, these pieces after 1945)
Primary Maker: Ursula Fesca
Medium: Mat glazed slip-cast earthenware with duotone (black, yellow) decoration

Title: Partial "Haarlem Service": Plate
Date: 1932 (design, in production since 1932, these pieces after 1945)
Primary Maker: Ursula Fesca
Medium: Mat glazed slip-cast earthenware with duotone (black, yellow) decoration

Title: Partial "Haarlem Service": Plate
Date: 1932 (design, in production since 1932, these pieces after 1945)
Primary Maker: Ursula Fesca
Medium: Mat glazed slip-cast earthenware with duotone (black, yellow) decoration

Title: Partial "Haarlem Service": Plate
Date: 1932 (design, in production since 1932, these pieces after 1945)
Primary Maker: Ursula Fesca
Medium: Mat glazed slip-cast earthenware with duotone (black, yellow) decoration

Title: Partial "Haarlem Service": Plate
Date: 1932 (design, in production since 1932, these pieces after 1945)
Primary Maker: Ursula Fesca
Medium: Mat glazed slip-cast earthenware with duotone (black, yellow) decoration

Title: Partial Coffee Service: Creamer and Saucer
Date: circa 1929
Primary Maker: Eva Stricker Zeisel
Medium: Glazed slip-cast earthenware with polychrome decoration

Title: Partial Coffee Service: Sugar Bowl and Saucer
Date: circa 1929
Primary Maker: Eva Stricker Zeisel
Medium: Glazed slip-cast earthenware with polychrome decoration

Title: Partial Coffee Service: Cup and Saucer
Date: circa 1929
Primary Maker: Eva Stricker Zeisel
Medium: Glazed slip-cast earthenware with polychrome decoration

Title: Partial Coffee
Service: Cup and Saucer
Date: circa 1929
Primary Maker: Eva Stricker Zeisel
Medium: Glazed slip-cast earthenware with polychrome decoration

Title: Partial Coffee
Service: Cup and Saucer
Date: circa 1929
Primary Maker: Eva Stricker Zeisel
Medium: Glazed slip-cast earthenware with polychrome decoration

Title: Partial Coffee
Service: Cup and Saucer
Date: circa 1929
Primary Maker: Eva Stricker Zeisel
Medium: Glazed slip-cast earthenware with polychrome decoration

Title: Partial Coffee
Service: Cup and Saucer
Date: circa 1929
Primary Maker: Eva Stricker Zeisel
Medium: Glazed slip-cast earthenware with polychrome decoration

Title: Tea Pot and Lid
Date: 1761 - 1763
Primary Maker: Gotowski Factory
Medium: Partially glazed porcelain

Title: Milk Jug and Lid
Date: 1761 - 1763
Primary Maker: Gotowski Factory
Medium: Partially glazed porcelain

Title: Tea Caddy and Lid
Date: 1761 - 1763
Primary Maker: Gotowski Factory
Medium: Partially glazed porcelain



Title: Candlestick in Feline Form
Date: 1927 (design [and probable fabrication])
Primary Maker: Gudrun Baudisch
Medium: Glazed hand modeled earthenware with painted glaze decoration

Title: Plate
Date: circa 1928
Primary Maker: Gertrude Gutchinsky
Medium: Glazed earthenware with polychrome decoration

Title: Plate

Date: circa 1928

Primary Maker: Gertrude Gutchinsky

Medium: Glazed earthenware with polychrome decoration

Title: Plate

Date: circa 1928

Primary Maker: Gertrude Gutchinsky

Medium: Glazed earthenware with polychrome decoration

Title: Cup Saucer

Date: circa 1901 - 1902

Primary Maker: Jutta Sika

Medium: Glazed porcelain with overglaze stencil decoration

Title: Cup Saucer

Date: circa 1901 - 1902

Primary Maker: Jutta Sika

Medium: Glazed porcelain with overglaze stencil decoration



Title: Vase

Date: 1915 - 1920

Primary Maker: B. Bloch & Co., Eichwald

Medium: Glazed slip-cast? earthenware with underglaze enamel decoration



Title: Vase

Date: 1915 - 1920

Primary Maker: B. Bloch & Co., Eichwald

Medium: Glazed slip-cast? earthenware with underglaze enamel decoration

Title: Tea Cups

Date: 1905 - 1999

Primary Maker: Bunsho Gitei (Kasumi)

Medium: Glazed stoneware with underglaze slip-painted calligraphy

Title: Partial Tea Service

Date: circa 1930s

Primary Maker: Nymphenburg Porcelain Factory

Medium: Porcelain (white, pale yellow)

Title: Partial "Haarlem Service"

Date: 1932 (design, in production since 1932, these pieces before 1945)

Primary Maker: Ursula Fesca

Medium: Glazed slip-cast earthenware with duotone (black, creamy yellow) decoration and cane tea pot handle

Title: Partial "Haarlem Service"

Date: 1932 (design, in production since 1932, these pieces after 1945)
Primary Maker: Ursula Fesca
Medium: Glazed slip-cast earthenware with monochrome (pale blue) decoration and cane tea pot handle

Title: Partial "Haarlem Service"

Date: 1932 (design, in production since 1932, these pieces after 1945)
Primary Maker: Ursula Fesca
Medium: Mat glazed slip-cast earthenware with duotone (black, yellow) decoration and cane tea pot handle

Title: Partial Coffee Service

Date: circa 1929
Primary Maker: Eva Stricker Zeisel
Medium: Glazed slip-cast earthenware with polychrome decoration

Title: Partial Tea Set: Tea Pot, Milk Jug, Tea Caddy

Date: 1761 - 1763
Primary Maker: Gotowski Factory
Medium: Partially glazed porcelain



Title: Candlestick in Feline Form

Date: 1927 (design [and probable fabrication])
Primary Maker: Gudrun Baudisch
Medium: Glazed hand modeled earthenware with painted glaze decoration

Title: Plate Set

Date: circa 1928
Primary Maker: Gertrude Gutchinsky
Medium: Glazed earthenware with polychrome decoration

Title: Pair of Cup Saucers

Date: circa 1901 - 1902
Primary Maker: Jutta Sika
Medium: Glazed porcelain with overglaze stencil decoration



Title: Set of Vases

Date: 1915 - 1920
Primary Maker: B. Bloch & Co., Eichwald
Medium: Glazed slip-cast? earthenware with underglaze enamel decoration

Title: Untitled

Date: circa 1974
Primary Maker: Ruth Duckworth
Medium: Ceramic wall relief

Title: Serving Dish

Date: 15th - 16th century

Primary Maker: Unknown

Artist

Medium: Glazed porcelainous stoneware with underglaze-blue decoration

Title: Serving Dish

Date: 15th - 16th century

Primary Maker: Unknown

Artist

Medium: Glazed porcelainous stoneware with underglaze-blue decoration

Title: Footed Bowl

Date: late 15th - early 16th century

Primary Maker: Unknown
Artist

Medium: Glazed porcelainous stoneware with underglaze-blue decoration



Title: Covered Jar

Date: late 15th - early 16th century

Primary Maker: Unknown

Artist

Medium: Glazed porcelainous stoneware with underglaze-blue decoration

Title: Deep Dish

Date: late 15th - early 16th century

Primary Maker: Unknown

Artist

Medium: Glazed porcelainous stoneware with underglaze-blue decoration



Title: Footed Jar with Cover

Date: late 15th - early 16th century

Primary Maker: Unknown

Artist

Medium: Glazed porcelainous stoneware with underglaze-blue decoration

Title: Miniature Jar

Date: late 15th - early 16th century

Primary Maker: Unknown

Artist

Medium: Glazed porcelainous stoneware with underglaze-blue decoration

Title: Miniature Jar

Date: late 15th - early 16th century

Primary Maker: Unknown

Artist

Medium: Glazed porcelainous stoneware with underglaze-blue decoration

Title: Miniature Jar

Date: late 15th - early 16th century

Primary Maker: Unknown

Artist

Medium: Glazed porcelainous stoneware with underglaze-blue decoration

Title: Miniature Jar

Date: late 15th - early 16th century

Primary Maker: Unknown Artist

Medium: Glazed porcelainous stoneware with underglaze-blue decoration

Title: Miniature Jar

Date: late 15th - early 16th century

Primary Maker: Unknown Artist

Medium: Glazed porcelainous stoneware with underglaze-blue decoration



Title: Vessel Stand

Date: n.d.

Primary Maker: Unknown Artist

Medium: Unglazed earthenware with burnished slip-painted surface



Title: Red Polished Bowl

Date: 1950 - 1600 B.C.E.

Medium: Brown clay, red slip

Title: Gourd Jug

Date: 1875/1850 - 1750 B.C.E.

Medium: Slip painted earthenware, incised decoration

Title: Red Polished Gourd Juglet

Date: 1875 - 1700 B.C.E.

Medium: Yellow clay, red slip

Title: Red Polished Gourd Juglet

Date: circa 1950 - 1700 B.C.E.

Medium: Yellow clay, red slip

Title: Red Polished Gourd Jug

Date: circa 1875 - 1750 B.C.E.

Medium: Brown clay, red slip

Title: Red Polished Gourd Juglet

Date: circa 1875 - 1750 B.C.E.

Medium: Brown clay, red slip

**Title: Red Polished
Juglet**

Date: 1800 - 1750 B.C.E.

Medium: Earthenware with
slip-painted, incised decoration

Title: Red Polished Jug

Date: 1800 - 1750 B.C.E.?

Medium: Earthenware, slip-
painted with applied, incised
and punch-hole decoration

**Title: Red Polished
Juglet with Side Spout**

Date: circa 1800 - 1700 B.C.E.

Medium: Pottery

**Title: Red Polished
Coarse Ware Cooking
Dipper**

Date: circa 1875 - 1750 B.C.E.

Medium: Clay brick red,
brownish red slip



**Title: Two Tripodic
Amphorae Joined**

Date: circa 1900 - 1750 B.C.E.

Medium: Slip painted
earthenware with incised
decoration

**Title: White Painted
String Hole Jug**

Date: 1750 - 1700 B.C.E.

Medium: Clay with dark paint



Title: Black Slip Flask

Date: circa 1750 - 1700 B.C.E.

Medium: Light clay, polished
black slip

Title: White Painted Jug

Date: 1750 - 1700 B.C.E.

Medium: Buff clay with brown
to red matt paint



Title: White Painted Jug

Date: 1750 - 1700 B.C.E.

Medium: Light clay with brown
to red slightly polished paint



Title: White Painted Bowl
Date: 1750 - 1700 B.C.E.
Medium: Buff clay with brown to red matte paint



Title: White painted bowl
Date: 1750 - 1700 B.C.E.
Medium: Buff clay with matte brown paint



Title: White painted pendent line style bottle
Date: 1750 - 1700 B.C.E.
Medium: Clay with reddish-brown paint



Title: White painted bowl
Date: 1750 - 1700 B.C.E.
Medium: Light clay with brown paint



Title: White painted bowl
Date: 1750 - 1700 B.C.E.
Medium: Pottery; brown paint remains

Title: White painted bowl
Date: circa 1750 - 1700 B.C.E.
Medium: Pottery with paint remains

Title: White painted bowl
Date: circa 1750 - 1700 B.C.E.
Medium: Light clay with red paint



Title: White painted Juglet
Date: 1750 - 1700 B.C.E.
Medium: Pottery; red paint with polished surface

Title: White painted jug
Date: 1750 - 1600 B.C.E.
Medium: Buff clay with remains of matt brown paint

**Title: White Painted
String Hole Style Jug**

Date: circa 1750 - 1700 B.C.E.

Medium: Yellow ground with
red and black pattern

**Title: White painted
string hole jug**

Date: 1700 - 1600 B.C.E.

Medium: Buff clay with
remains of paint

**Title: White Painted
String Hole Jug**

Date: 1750 - 1700 B.C.E.

Medium: Light clay with red
lustrous paint



**Title: White Painted
String Hole Jug**

Date: 1750 - 1600 B.C.E.

Medium: Clay with paint

**Title: White painted
tankard**

Date: circa 1700 - 1600 B.C.E.

Medium: Light clay, brown
paint on white slip

Title: White painted jug

Date: circa 1700 - 1600 B.C.E.

Medium: Light clay with brown
matt paint

Title: White painted jug

Date: circa 1700 - 1600 B.C.E.

Medium: Light clay with brown
to red paint



**Title: White painted
animal vase**

Date: circa 1700 - 1600 B.C.E.

Medium: Light clay with brown
paint

Title: Base ring bottle

Date: 1450 - 1350 B.C.E.

Medium: Clay with white slip
and paint



Title: White slip bowl
Date: circa 1550 - 1400 B.C.E.
Medium: Red clay with whitish slip and brown paint



Title: Plain White VI Jug
Date: circa 475 - 370 B.C.E.
Medium: Earthenware (light clay) with white painted decoration

Title: Plain White VI Jug
Date: circa 475 - 370 B.C.E.
Medium: Earthenware (light buff) with white painted decoration



Title: Covered Cinerary or Reliquary (Sarira) Urn
Date: 15th - 16th century
Primary Maker: Unknown Artist
Medium: Glazed porcelain with modeled and partial green (celadon) glaze decoration



Title: Plain White VI Jug
Date: 475 - 370 B.C.E.
Medium: Earthenware (red) with light slip



Title: Jug
Date: circa 50 - 250
Medium: Clay with polished red surface

Title: Coarse Ware Cup
Date: 325 - 50 B.C.E.
Medium: Pottery

Title: Tall Pot
Date: n.d.
Medium: Clay

Title: Juglet
Date: n.d.
Medium: Pottery



Title: Sub-Mycenean Jug

Date: circa 1200 - 1075 B.C.E.

Medium: Yellow clay with black and red slip; white paint



Title: White Painted Jug

Date: 1050 - 950 B.C.E.

Medium: Earthenware (buff clay) with reddish-brown and light red accessory painted decoration

Title: White Painted Jug

Date: 1050 - 950 B.C.E.

Medium: Earthenware with buff slip with reddish-brown to dark brown painted decoration

Title: Bichrome Bowl

Date: circa 1050 - 950 B.C.E.

Medium: Reddish clay with buff slip and black and red paint



Title: Bichrome Jug

Date: circa 950 - 850 B.C.E.

Medium: Reddish clay with black and red paint

Title: Bichrome III Bowl

Date: circa 900 - 700 B.C.E.

Medium: Earthenware (red) with light-colored slip and black and red painted decoration

Title: Black-on-Red I (III) Jug

Date: circa 900 - 700 B.C.E.

Medium: Earthenware (red) with red-brown slip and matte black painted decoration

Title: Black-on-Red I (III) or II (IV) Jug

Date: circa 850 - 600 B.C.E.

Medium: Earthenware (reddish) with lustrous red slip and black accessory painted decoration



Title: Bichrome IV Amphora

Date: 700 - 475 B.C.E.

Medium: Earthenware (light buff) with light slip and black and purple painted decoration



Title: Bichrome Red I (IV) Bowl
Date: 750 - 550 B.C.E.
Medium: Earthenware (red) with buff slip and black and reddish-purple painted decoration



Title: Bichrome Red I (IV) Jug
Date: circa 700 - 550 B.C.E.
Medium: Earthenware (red) with reddish slip and red and black accessory painted decoration



Title: Vessel
Date: 200 B.C.E. - 250 C.E.
Medium: Unglazed earthenware

Title: Black-on-Red III (V) Juglet
Date: circa 600 - 475 B.C.E.
Medium: Earthenware (reddish) with red slip and black painted decoration

Title: Bronze Age Sherd
Date: n.d.
Medium: Buff clay with orange /brown paint

Title: Bronze Age Pottery Sherd
Date: n.d.
Medium: Buff clay with light and dark brown paint

Title: Bronze Age Sherd
Date: n.d.
Medium: Buff clay with slip and paint, curved spiral pattern

Title: Bronze Age Sherd with Abbreviated Spiral Pattern
Date: n.d.
Medium: Buff clay with orange /brown paint



Title: Cup
Date: 50 - 150
Medium: Unglazed earthenware (reddish clay)



Title: Unguentarium

Date: circa 50 - 150

Medium: Clay; reddish-brown surface with purple paint remains



Title: Amorial Plate (with Arms of Lee Quartering Astley)

Date: circa 1730

Primary Maker: Unknown Artist

Medium: Porcelain with overglaze enamel and gilt decoration

Title: Bronze Age Handle Fragment

Date: n.d.

Medium: Buff clay with dark orange-brown paint

Title: Bronze Age Pottery Sherd

Date: n.d.

Medium: Clay with brown glaze

Title: Lamp

Date: late 10th century (Byzantine) or 13th century

Medium: Glazed earthenware

Title: Lamp

Date: 5th - 6th century

Medium: Pink-buff terracotta with brown slip

Title: Shell Lamp

Date: mid- 7th - mid- 6th century B.C.E.

Medium: Terracotta (coarse) with brown slip



Title: Red-Figure Bell-Krater Fragment: Two Youths (Perhaps Orestes and Pylades at the Altar in Taurus)

Date: circa 435 - 425 B.C.E.

Primary Maker: Peleus Painter

Medium: Earthenware with slip-painted decoration

Title: Red Figure Skyphos Rim Fragment: Head and Shoulder of a Woman

Date: circa 450 B.C.E.

Primary Maker: Douris

Medium: Earthenware with slip-painted decoration

**Title: Red-Figure
Fragment from a Large
Vase: Part of a Woman**
Date: circa 430 B.C.E.
Primary Maker: Kleophon
Painter
Medium: Earthenware with
slip-painted decoration

**Title: Red Figure Kalyx
Krater Fragment**
Date: 450 - 420 B.C.E.
Primary Maker: Achilles
Painter
Medium: Earthenware with
slip-painted decoration



**Title: Red-Figure
Lekanis Lid Fragment:
Woman Sitting on a Rock**
Date: circa 400 - 375 B.C.E.
Primary Maker: Jena Painter
Medium: Earthenware with
slip-painted decoration



**Title: Red Figure Two
Banded Calyx-Krater
Fragment: Battle of
Kaineus and Centaur
(upper register),
Departure of a Youth
(lower registrar)**
Date: circa 440 - 430 B.C.E.
Primary Maker: Polygnotos
Medium: Earthenware with
slip-painted decoration

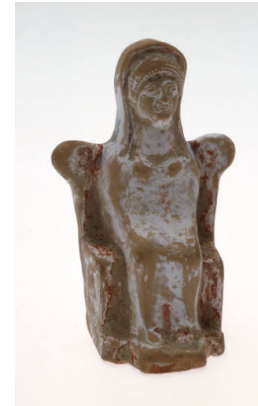
**Title: Red-Figure Pottery
Fragment**
Date: circa mid- 5th century B.
C.E.
Primary Maker: Euaion Painter
Medium: Earthenware with
slip-painted decoration

**Title: Four Fragments
from Red-Figure Open
Vase**
Date: n.d.
Primary Maker: Syleus Painter
Medium: Earthenware with
slip-painted decoration



**Title: Statuette
Fragment: Head of a
Woman with Elaborate
Coiffure**
Date: circa second half of 1st
century B.C.E.
Medium: Earthenware

**Title: Statuette
Fragment: Head of a
Woman**
Date: n.d.
Medium: Earthenware with
cold- or slip-painted decoration



Title: Enthroned Athena
Date: late 6th - early 5th
century B.C.E.
Medium: Slip-painted
earthenware with cold-painted
decoration

Title: Statuette
Fragment: Eros
Date: circa 4th century B.C.E.
Medium: Earthenware



Title: Ram-Shaped Vessel
Date: second - third quarter of 5th century B.C.E.
Medium: Earthenware with cold-painted decoration



Title: Pigeon
Date: 5th century B.C.E.
Medium: Slip-painted earthenware



Title: Statuette
Fragment: Head of the Helmeted Promachos
Athena
Date: circa 6th century B.C.E.
Medium: Slip-painted earthenware

Title: Architectural
Fragment: Antefix as a Mask of a Satyr
Date: n.d.
Medium: Earthenware with cold-painted decoration



Title: Head of a Woman
Date: 1st century
Medium: Earthenware with cold-painted decoration



Title: Horse and Rider
Date: circa 550 B.C.E.
Medium: Earthenware with slip-painted decoration

Title: Statuette
Fragment: Torso and Head of a Woman
Date: after mid 6th century B.C.E.
Medium: Earthenware



Title: Mural Relief: Nike Sacrificing a Bull
Date: 1st - 2nd century
Medium: Slip-painted molded and modeled earthenware

Title: Sherd

Date: n.d.

Medium: Buff clay with dark brown glaze

Title: Bronze Age Sherd

Date: n.d.

Medium: Buff clay with brown paint

Title: Sherd

Date: n.d.

Medium: Buff clay with brown glaze

Title: Sherd

Date: circa 1100 B.C.E.

Medium: Buff clay, brown paint



Title: Teapot

Date: circa 1800 - 1820

Primary Maker: Unknown Artist

Medium: Porcelain with five-color glaze and gilding



Title: Coffee Cup

Date: circa 1790

Primary Maker: Unknown Artist

Medium: Porcelain with blue and red/orange and gilt decoration

**Title: Argive Late
Geometric Vase
Fragment: Female
Chorus Performing a
Ring Dance**

Date: circa 725 - 700 B.C.E.

Medium: Earthenware (buff) with black painted decoration



Title: Vase

Date: 10th - 11th century

Medium: Partially glazed earthenware

Title: Vessel Sherd

Date: circa 8th century B.C.E.

Medium: Pink clay with yellow-cream slip

Title: Vase Sherd**Date:** circa 750 B.C.E.**Medium:** Pinkish-buff clay with black glaze design**Title: Lid Fragment****Date:** n.d.**Medium:** Pottery, painted in red geometric design**Title: Vase Fragment****Date:** n.d.**Medium:** Pottery

Title: Vase Fragment**Date:** mid- 7th century B.C.E.**Medium:** Dark paint on light clay**Title: Vase Fragment****Date:** n.d.**Medium:** Cream clay with black glaze design**Title: Bowl Sherd****Date:** n.d.**Medium:** Pink-orange clay with black paint

Title: Kotyle or Krater Fragment**Date:** circa early 8th century B.C.E.**Medium:** Pink-buff clay with black stripes**Title: Vase Fragment****Date:** late 7th century B.C.E.**Medium:** Clay with reddish brown and black paint**Title: Fragment of a Kylix****Date:** 1300 - 1230/1200 B.C.E.**Medium:** Earthenware with slip-painted decoration

**Title: Red Figure Kylix
Fragment from a
Lekanis (?): Warrior with
a Thracian Helmet**
Date: circa 464 - 460 B.C.E.
Primary Maker: Niobid Painter
Medium: Earthenware with
slip-painted decoration



**Title: Black-Figure
Column Krater Handle
Fragment: Two Heads
(male and female) in
Profile**
Date: 7th - early 6th century B.
C.E.
Medium: Earthenware with
slip-painted decoration



Title: Alabastron
Date: n.d.
Medium: Earthenware with
slip-painted decoration



Title: Alabastron
Date: n.d.
Medium: Earthenware with
slip-painted decoration



Title: Aryballos
Date: n.d.
Medium: Earthenware with
slip-painted decoration



Title: Alabastron
Date: n.d.
Medium: Earthenware with
slip-painted decoration



Title: Aryballos
Date: n.d.
Medium: Earthenware with
slip-painted decoration

**Title: Black-Figure Kylix:
A Satyr Carrying a
Garland and Vine
Following a Maenad with
Two Garlands and Vines**
Date: n.d.
Medium: Earthenware with
slip-painted decoration

Title: Plate
Date: n.d.
Medium: Earthenware with
slip-painted decoration



**Title: Black-Figure Plate:
Prancing Goat**

Date: circa 510 - 490 B.C.E.

Medium: Earthenware with
slip-painted decoration

**Title: Black-Figure
Vessel Sherd: Owl and
Human Foot**

Date: late 6th century B.C.E.

Medium: Earthenware with
slip-painted decoration

**Title: Black-Figure
Vessel Sherd: Part of a
Human (Shoulder and
hair)**

Date: early 5th century B.C.E.

Medium: Earthenware with
slip-painted decoration

**Title: Neck of Large
Vessel Fragment: Duck,
Roses**

Date: 7th - 6th century B.C.E.

Medium: Corinthian fabric with
black figures

**Title: Black-Figure
Panathenaic Amphora
Fragment: Letters and
Line**

Date: n.d.

Medium: Earthenware with
slip-painted decoration

**Title: Black-Figure
Sherd: Athena Featured**

Date: circa 540 - 530 B.C.E.

Primary Maker: Swing Painter

Medium: Earthenware with
slip-painted decoration



Title: Vase

Date: 5th or 6th century B.C.E.

Medium: Aryballos with
geometric design

Title: Vase

Date: n.d.

**Title: Black Figure
Vessel Sherd**

Date: n.d.

Medium: Earthenware with
slip-painted decoration



Title: Black-Figure Panathenaic Amphora Fragment: Two Runners
Date: circa 530 B.C.E.
Medium: Earthenware with slip-painted decoration

Title: Black-Figure Stand Fragment (base): Ganymede with Hoop on Back
Date: n.d.
Medium: Earthenware with slip-painted decoration

Title: Black-Figure Panathenaic Amphora Fragment: Inscription
Date: 352 - 351 B.C.E.
Medium: Earthenware with slip-painted decoration

Title: Vessel Sherd: Silen
Date: circa 550 - 530 B.C.E.
Medium: Earthenware with slip-painted decoration

Title: Small Vessel for Liquids, with Classical Stand
Date: n.d.
Medium: Terracotta

Title: Black-Figure Lekythos: Geometric and Palmette Designs
Date: circa 470 - 450 B.C.E.
Medium: Earthenware with slip-painted and cold-painted decoration



Title: Black-Figure Nikosthenic Amphora Handle Fragment: Satyr's Head with Border Design on Fragment
Date: circa 535 - 520 B.C.E.
Primary Maker: Unknown Artist
Medium: Earthenware with slip-painted decoration



Title: Aryballos
Date: late 6th century B.C.E.
Medium: Earthenware with slip-painted decoration



Title: Fragment of a Black-figure Plaque: Burial Mourning Scene (Prothesis)
Date: 500 - 480 B.C.E.
Medium: Earthenware with slip-painted decoration



Title: Black-Figure
**Lekythos: Two Pairs of
Women, Each Wearing a
Dress and Mantle, with
One Seated and One
Standing**

Date: n.d.

Medium: Earthenware with
slip-painted decoration

Title: Black-Figure
Lekythos

Date: circa 510 - 500 B.C.E.

Medium: Earthenware with
slip-painted decoration



Title: Pyxis (so-called
Lebes Gamikos)

Date: 420 - 400 B.C.E.

Medium: Earthenware with
slip-painted decoration



Title: Kabiric Pyxis
**Fragment: Odysseus's
Men Before Circe, Two
Combatants**

Date: circa 430 - 420 B.C.E.

Primary Maker: Kabiros
Painter

Medium: Earthenware with
slip-painted and incised
decoration

Title: Black-Figure
**Miniature Panathenaic
Amphora**

Date: n.d.

Medium: Earthenware with
slip-painted decoration

Title: Black-Figure Squat
Lekythos

Date: early 5th century B.C.E.

Medium: Clay with black glaze
and white and red slip
decoration



**Title: Geometric
Kantharos/Bowl**

Date: late 8th - early 7th
century B.C.E.

Medium: Earthenware with
slip-painted decoration

**Title: Black Figure
Kabiric Kantharos
Fragment: Scene of
Banqueting, Servants**

Date: 5th century B.C.E.

Medium: Earthenware with
slip-painted and incised
decoration

**Title: Black Figure
Kabiric Askos Fragment:
Goat being held by horns**

Date: 420 - 400 B.C.E.

Medium: Earthenware with slip-
painted and incised decoration

**Title: Black Figure
Kabiric Kantharos
Fragment: Procession or
Festivity, Acrobats with
Three-legged Table**

Date: 410 - 400 B.C.E.

Medium: Earthenware with
slip-painted and incised
decoration



**Title: Black-Figure Dinos
Rim Fragment: Ivy
Leaves, Chariot Race,
Warriors, Part of a
Warship**

Date: circa 540 - 530 B.C.E.

Medium: Earthenware with
slip-painted decoration



**Title: Red-Figure Kylix
Fragment: A Komos
(Party Scene)**

Date: circa 515 - 510 B.C.E.

Medium: Earthenware with
slip-painted decoration

**Title: Red-Figure
Fragment of Attic Cup-
Calyx (helmeted soldier
holding shield)**

Date: circa mid- 5th century B.
C.E.

Medium: Slip-painted
earthenware



**Title: Red-Figure Neck
Pelike Fragment:
Ephebe (Youth)**

Date: circa 510 B.C.E.

Primary Maker: Euphronios

Medium: Earthenware with
slip-painted decoration

**Title: Red Figure Hydra
Neck Fragment**

Date: n.d.

Primary Maker: Girgenti
Painter

Medium: Earthenware with
slip-painted decoration

**Title: Rim Fragment
from Red Figure Kylix**

Date: n.d.

Medium: Earthenware with
slip-painted decoration

**Title: Fragment of Red
Figure Kylix**

Date: n.d.

Medium: Earthenware with
slip-painted decoration

**Title: Fragment of Red
Figure Closed Vase**

Date: n.d.

Medium: Earthenware with
slip-painted decoration



**Title: Red Figure Vessel
Fragment (from a kylix?)**

Date: circa 430 B.C.E.

Medium: Earthenware with
slip-painted decoration

**Title: Red Figure Vessel
Fragment**

Date: second half of 5th
century B.C.E.

Medium: Earthenware with
slip-painted decoration

**Title: Fragment of Red
Figure Kylix**

Date: circa mid- 5th century B.
C.E.

Medium: Earthenware with
slip-painted decoration

**Title: Fragment of Red-
Figure Kylix**

Date: circa 450 B.C.E.

Medium: Earthenware with
slip-painted decoration

**Title: Red Figure Kylix
Fragment**

Date: circa mid- 5th century B.
C.E.

Medium: Earthenware with
slip-painted decoration

**Title: Rim Fragment
from Red Figure Vessel**

Date: n.d.

Medium: Earthenware with
slip-painted decoration

Title: Rim of Red Figure Kylix

Date: circa 475 - 450

Medium: Earthenware with slip-painted decoration

Title: Fragments of Red Figure Kylix (Nine Pieces)

Date: n.d.

Primary Maker: Painter of Brussels

Medium: Earthenware with slip-painted decoration

Title: Red Figure Kylix Sherd

Date: n.d.

Primary Maker: Penthesilea Painter

Medium: Earthenware with slip-painted decoration

Title: Red Figure Skyphos Fragment

Date: n.d.

Medium: Earthenware with slip-painted decoration



Title: Red Figure Kylix Fragments

Date: n.d.

Medium: Earthenware with slip-painted decoration

Title: Fragment of Red Figure Kylix

Date: circa 500 - 475 B.C.E.

Medium: Earthenware with slip-painted decoration

Title: Fragment of Red-Figure Kylix Rim

Date: first half of 5th century B. C.E.

Primary Maker: Brygos Painter

Medium: Earthenware with slip-painted decoration

Title: Fragment of Red Figure Jar

Date: second half of 5th century B.C.E.

Medium: Earthenware with slip-painted decoration

Title: Rim of Red Figure Kylix

Date: circa 450 B.C.E.

Medium: Earthenware with slip-painted decoration

**Title: Three Red Figure
Kylix Fragments**

Date: n.d.

Medium: Earthenware with
slip-painted decoration

**Title: Red Figure
Fragment: Head and
Shoulder of a Woman**

Date: circa 450 B.C.E.

Primary Maker: Niobid Painter

Medium: Earthenware with
slip-painted decoration



Title: Plate

Date: circa 1755

Medium: Powdered
manganese and blue tin-
glazed earthenware (delftware)

Title: Posset Pot

Date: circa 1680 - 1700

Medium: Polychrome (blue,
black and turquoise) tin-glazed
earthenware (delftware)

**Title: Red-Figure Kylix
Fragment**

Date: n.d.

Medium: Earthenware with
slip-painted decoration

**Title: Red-Figure Pot
Sherd**

Date: circa 350 B.C.E.

Medium: Earthenware with
slip-painted and cold-painted
decoration, white paint

**Title: Red-Figure Vase
Fragment**

Date: mid- 5th century B.C.E.

Primary Maker: Pan Painter

Medium: Earthenware with
slip-painted decoration

**Title: Fragment of Red-
Figure Jar (Stamnos?)**

Date: circa 460 B.C.E.

Primary Maker: Agrigento

Medium: Earthenware with
slip-painted decoration

**Title: Fragment of a Red-
Figure Cup**

Date: early 5th century B.C.E.

Medium: Earthenware with
slip-painted decoration

Title: Three Red-Figure Kylix Fragments

Date: n.d.

Medium: Earthenware with slip-painted decoration, black and white paint

Title: Red-Figure Kylix Sherd

Date: n.d.

Medium: Earthenware with slip-painted decoration

Title: Red-Figure Kylix Fragment: Draped Seated Male Figure with a Walking Stick (inside), Part of a Figure with a Walking Stick (outside)

Date: second quarter of 5th century B.C.E.

Medium: Earthenware with slip-painted decoration

Title: Red-Figure Kylix Fragments

Date: n.d.

Medium: Earthenware with slip-painted decoration

Title: Two Red-Figure Kylix Fragments

Date: n.d.

Medium: Earthenware with slip-painted decoration

Title: Red-Figure Vase Fragment

Date: n.d.

Medium: Earthenware with slip-painted decoration

Title: Red-Figure Kylix Fragments: Part of Head and Shoulder of a Youth in Conversation (a), Part of a Draped Figure with Walking Stick (b)

Date: circa second quarter of 5th century B.C.E.

Primary Maker: Angular Painter

Medium: Earthenware with slip-painted decoration

Title: Red-Figure Kylix Fragments

Date: 5th century B.C.E.

Medium: Earthenware with slip-painted decoration

Title: Baluster Jar with Cover

Date: circa 1640

Medium: White porcelain with underglaze blue decoration

Title: Red-Figure Kylix Fragment

Date: 4th century B.C.E.

Medium: Earthenware with slip-painted decoration



Title: Black-Figure Eye Kylix: Dionysos Seated Between Two Satyrs

Date: circa 510 - 100 B.C.E.

Medium: Earthenware with slip-painted decoration

Title: Red-Figure Nolan Amphora

Date: late 5th century B.C.E.

Medium: Earthenware with slip-painted decoration



Title: Red-Figure Pelike

Date: n.d.

Medium: Earthenware with slip-painted decoration



Title: Bowl

Date: circa 17th - 18th century

Primary Maker: Unknown Artist

Medium: Vietnamese stoneware with underglaze and inglaze blue decoration



Title: Black-Figure Pelike: Two Visitors to the Sphinx (Oedipus Confronting the Theban Sphinx?) (obverse), Hermes Playing the Flute to two Satyrs (reverse)

Date: circa 490 B.C.E.

Primary Maker: Eucharides Painter

Medium: Earthenware with slip-painted decoration



Title: Red-Figure Kylix:
**Standing Youth Holding
a Walking Stick and Bowl**

Date: n.d.

Primary Maker: Antiphon
Painter

Medium: Earthenware with
slip-painted decoration



Title: Black-Figure
Loutrophoros Amphora

Date: circa 480 - 470 B.C.E.

Medium: Earthenware with
slip-painted and cold-painted
decoration



Title: Red-Figure Pelike

Date: 460 B.C.E.

Medium: Earthenware with
slip-painted decoration



Title: Red-Figure
**Skyphos: Running (?)
Youth (Side A), Deer (?)
(Side B)**

Date: circa 4th century B.C.E.

Medium: Earthenware with
slip-painted decoration

Title: Black-Figure
Skyphos

Date: n.d.

Medium: Earthenware with
slip-painted decoration



Title: Red-Figure
**Alabastron: Two Running
Warriors Carrying Peltas**

Date: circa 510 - 500 B.C.E.

Primary Maker: Painter of
Berlin 2268

Medium: Earthenware with
slip-painted decoration



Title: Red-Figure Kylix: Seated Woman Juggling Balls with Flying Eros Figure
Date: circa 440 - 420 B.C.E.
Medium: Earthenware with slip-painted decoration

Title: Black-Figure Lekythos
Date: circa 510 - 500 B.C.E.
Medium: Earthenware with slip-painted decoration

Title: Red-Figure Lekythos: Flying Nike
Date: circa 450 B.C.E.
Medium: Earthenware with slip-painted decoration



Title: Red-Figure Cup
Date: circa second quarter of 4th century B.C.E.
Medium: Earthenware with slip-painted decoration



Title: Black-Figure Amphora
Date: circa 530 B.C.E.
Medium: Earthenware with slip-painted decoration



Title: Red-Figure Lekythos in Six's Technique
Date: n.d.
Medium: Earthenware with slip-painted and cold-painted (?) decoration

**Title: White-Ground
Alabastron: An Altar
Flanked by a Man and a
Standing Youth**
Date: circa 440 B.C.E.
Medium: Earthenware with
slip-painted and cold-painted
decoration

**Title: Red-Figure Vessel
Fragment**
Date: n.d.
Medium: Earthenware with
slip-painted decoration

**Title: White-Ground
Lekythos Fragment, Last
half of 5th century B.C.E.**
Date: late 5th century B.C.E.
Medium: Earthenware with
slip-painted decoration



**Title: White-Ground
Lekythos Fragment:
Profile Head of a
Woman, late 5th century
B.C.E.**
Date: Last half of 5th century B.
C.E.
Medium: Earthenware with
slip-painted decoration

**Title: White-Ground
Lekythos: Three Stelae**
Date: circa last quarter of 5th
century B.C.E.
Medium: Earthenware with
slip-painted and cold-painted
decoration

**Title: White-Ground
Lekythos Fragment**
Date: circa 5th - 1st century B.
C.E.
Medium: Earthenware with red
and yellow slip-painted (?) and
cold-painted decoration

**Title: Two Fragments
from a Small Vase**
Date: circa 2nd century
Medium: Partially glazed
earthenware

**Title: Krater Fragment:
Hercules**
Date: circa 1 - 15
Medium: Slip-glazed
earthenware with molded and
stamped decoration

Title: Bowl Fragment
Date: first half of 1st century
Medium: Slip-glazed
earthenware with stamped
decoration

**Title: Lamp Fragment
(Upper Discus): Dead or
Sleeping Male Nude**
Date: circa 25 - 75
Medium: Slip-glazed
earthenware with molded
decoration

**Title: Fragment of a Flat
Bottomed Plate**
Date: 1st century
Medium: Slip-glazed
earthenware

**Title: Bowl Fragment
with Relief of
Kalathiskos Dancer**
Date: 15 B.C.E. - 30 C.E.
Medium: Slip-glazed
earthenware with molded
decoration (Arrentine ware)



**Title: Pitcher with Trefoil
Lip and Strap Handle:
Bull**
Date: 12th century
Medium: Glazed slip-painted
earthenware with sgraffito
(incised) decoration

Title: Bowl Fragment
Date: circa 450 B.C.E.
Medium: Slip-glazed
earthenware with black glaze
and stamped decoration



**Title: Guan-shaped
Jarlet (with lotus petal
and floral decoration)**
Date: 14th - 15th century
Medium: Stoneware with
underglazed blue decoration

Title: Plate Fragment
Date: circa late 4th century B.
C.E.
Primary Maker: Unknown
Artist
Medium: Slip-glazed
earthenware with stamped
decoration

**Title: Fragment of an
Incense Burner (?)**
Date: circa 50 B.C.E. - 100 C.
E.
Medium: Earthenware

Title: Bowl Fragment
Date: n.d.
Primary Maker: Unknown
Artist
Medium: Earthenware, slip-
glazed with molded decoration
(Megarian ware)

Title: Bowl Fragment

Date: circa 250 B.C.E.

Primary Maker: Unknown

Artist

Medium: Slip-glazed earthenware with molded decoration (Megarian ware)

Title: Bowl Fragment

Date: circa 3rd century B.C.E.

Primary Maker: Unknown

Artist

Medium: Slip-glazed earthenware with black paint and molded decoration (Megarian ware)

Title: Statuette

Fragment: Head

Date: circa early 5th century B.C.E.

Medium: Earthenware with slip-painted decoration

Title: Statuette

Fragment: Head of a Woman

Date: early - mid 5th century B.C.E.

Medium: Slip-painted earthenware with cold-painted decoration



Title: Statuette

Fragment: Head of a Woman

Date: circa early 5th century B.C.E.

Medium: Slip-painted earthenware with cold-painted decoration

Title: Statuette

Fragment: Head of a Woman

Date: circa late 6th century B.C.E.

Medium: Slip-painted earthenware with cold-painted decoration

Title: Statuette

Fragment: Head of a Woman

Date: circa 5th century B.C.E.

Medium: Slip-painted earthenware with cold-painted decoration

Title: Statuette

Fragment: Head (of a Woman?)

Date: circa 5th century B.C.E.

Medium: Earthenware with cold-painted decoration

Title: Statuette

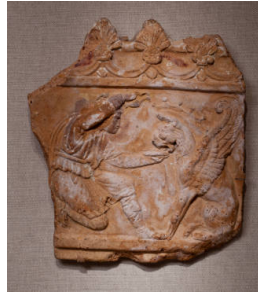
Fragment: Upper Body and Head of a Woman

Date: circa 5th century B.C.E.

Primary Maker: Unknown Artist

Medium: Earthenware with cold-painted decoration

Title: Statuette
Fragment: Head of a Woman Wearing a Headdress
Date: circa 5th century B.C.E.
Medium: Slip-painted earthenware with cold-painted decoration



Title: Mural Relief: Youth in Phrygian Hat Feeding a Griffin
Date: early 2nd century
Medium: Slip-painted molded earthenware



Title: Fusiform Unguentarium
Date: 3rd - 1st century B.C.E.
Medium: Earthenware



Title: Head
Date: 1400 - 1200 B.C.E.
Medium: Earthenware with slip-painted decoration

Title: Spindle Whorl
Date: circa early 6th century B.C.E.
Medium: Earthenware with slip-painted decoration



Title: Two-Handled Jar
Date: n.d.
Medium: Earthenware with slip-painted decoration



Title: Neck-Amphora
Date: circa late 7th century B.C.E.
Medium: Earthenware with slip-painted decoration



Title: Amphora
Date: circa late 7th century B.C.E.
Medium: Earthenware with slip-painted decoration



Title: Bull or Pig (?)
Date: n.d.
Medium: Earthenware with cold-painted decoration



Title: Bull or Pig (?)

Date: n.d.

Medium: Earthenware



Title: Bull or Pig (?)

Date: n.d.

Medium: Earthenware



Title: Bull or Pig (?)

Date: n.d.

Medium: Earthenware



Title: Bull or Pig (?)

Date: n.d.

Medium: Earthenware

Title: Lamp

Date: circa mid- 1st century B.
C.E.

Medium: Wheel made and
molded slip-painted
earthenware

Title: Statuette

**Fragment: Head of a
Woman**

Date: n.d.

Medium: Slip-painted molded
earthenware

Title: Statuette

**Fragment: Headless
Standing Draped Female
Holding Pitcher in her
Right Hand**

Date: possibly 6th century B.C.
E.

Medium: Slip-painted molded
earthenware

Title: Bull (?) or Pig (?)

Date: n.d.

Medium: Earthenware with
cold-painted decoration

Title: Bowl

Date: 5th century B.C.E.

Medium: Slip-painted (in
black) earthenware



Title: Bowl

Date: 17th century

Primary Maker: Unknown

Artist

Medium: Glazed stoneware (K: buncheong) with partial underglaze slip-painted decoration (J: Irabo type)

Title: Storage Jar

Date: 15th - 16th century

Primary Maker: Unknown

Artist

Medium: Glazed stoneware (buncheong)



Title: Bowl with Lotus Petal Decoration

Date: Late 12th - early 13th century

Primary Maker: Unknown

Artist

Medium: Stoneware with blue-green (celadon) glaze and carved and incised decoration



Title: Bowl

Date: 12th century

Primary Maker: Unknown

Artist

Medium: Stoneware with blue-green (celadon) glaze



Title: Bowl with Peony Decoration

Date: 12th century

Primary Maker: Unknown

Artist

Medium: Stoneware with blue-green (celadon) glaze and incised and molded decoration



Title: Bowl

Date: 15th - 16th century

Primary Maker: Unknown

Artist

Medium: Glazed porcelain with underglaze cobalt blue painted decoration



Title: Bowl

Date: 16th century

Primary Maker: Unknown

Artist

Medium: Glazed porcelain (white ware, baekja) (Ido type)



Title: Small Bottle

Date: 19th century

Primary Maker: Unknown

Artist

Medium: Glazed porcelain (white ware, baekja)



Title: Bowl

Date: 19th century

Primary Maker: Unknown

Artist

Medium: Glazed porcelain (white ware, baekja)

Title: Small Dish

Date: 12th - 13th century

Primary Maker: Unknown

Artist

Medium: Stoneware with bluish-green (celadon) glaze and incised decoration

Title: Small Dish

Date: 12th - 13th century

Primary Maker: Unknown

Artist

Medium: Stoneware with gray (celadon) glaze and white clay inlaid (sanggam) decoration

Title: Small Dish

Date: 12th - 13th century

Primary Maker: Unknown

Artist

Medium: Stoneware with greenish-gray (celadon) glaze and white clay inlaid (sanggam) decoration

Title: Wine Cup

Date: 12th - 13th century

Primary Maker: Unknown

Artist

Medium: Stoneware with blue-green (celadon) glaze and incised decoration



Title: Oil Bottle

Date: 12th - 13th century

Primary Maker: Unknown

Artist

Medium: Stoneware with green (celadon) glaze decoration

Title: Sauceboat-Shaped Vessel

Date: n.d.

Medium: Earthenware with cold-painted (?) decoration

Title: Vessel Sherd

Date: n.d.

Medium: Earthenware with cold-painted (?) or slip-painted (?) decoration



Title: Bowl

Date: n.d.

Primary Maker: Sakuma Family

Medium: Glazed earthenware (Mashiko kilns)



Title: Oribe-Style Tea Bowl

Date: n.d.

Medium: Glazed earthenware



Title: Pink Shino-Style Tea Bowl
Date: n.d.
Medium: Glazed earthenware

Title: Black-Figure Kylix Fragment
Date: late 6th century B.C.E.
Medium: Earthenware with slip-painted decoration



Title: Chosen Shino-Style Tea Bowl
Date: n.d.
Medium: Glazed earthenware



Title: Bowl
Date: n.d.
Medium: Glazed earthenware



Title: Karatsu-Type Bowl
Date: n.d.
Medium: Glazed earthenware



Title: Water Dropper
Date: n.d.
Medium: Glazed earthenware



Title: Water Dropper
Date: n.d.
Medium: Glazed stoneware



Title: Water Dropper
Date: n.d.
Medium: Glazed stoneware



Title: Water Dropper
Date: n.d.
Medium: Glazed earthenware with overglaze decoration



Title: Water Dropper
Date: n.d.
Medium: Glazed earthenware

Title: Eight Sherds of
Red-Figure Kylikes:
Stems and Tondo Rims
Date: n.d.
Medium: Earthenware with
slip-painted decoration

Title: Thirteen Sherds of
Red-Figure Kylikes:
Tondo Rims
Date: n.d.
Medium: Earthenware with
slip-painted decoration

Title: Twenty-Three
Sherds of Red-Figure
Kylikes: Floral
Ornaments from Armed
Handles
Date: n.d.
Primary Maker: Painter of
Berlin 2268
Medium: Earthenware with
slip-painted decoration



Title: Fragment of a
Vessel
Date: circa 11th century B.C.E.
Medium: Unglazed light buff
earthenware (whiteware?) with
incised and molded decoration

Title: Forty-Four Sherds
of Red-Figure Kylikes:
Figurative Decoration
Date: n.d.
Medium: Earthenware with
slip-painted decoration



Title: Fragment of a
Vessel
Date: circa 11th century B.C.E.
Medium: Unglazed light gray
earthenware (grayware) with
combed and coiled decoration



Title: Fragment of a
Vessel
Date: circa 11th century B.C.E.
Medium: Unglazed light gray
earthenware (grayware) with
incised and applied decoration



Title: Fragment of a
Vessel
Date: circa 11th century B.C.E.
Medium: Unglazed dark gray
earthenware (grayware) with
incised and applied decoration



Title: Fragment of a Vessel

Date: circa 11th century B.C.E.
Medium: Unglazed red earthenware (redware) with beaten paddle



Title: Fragment of a Vessel

Date: circa 11th century B.C.E.
Medium: Unglazed red earthenware (redware) with beaten paddle



Title: Fragment of a Vessel

Date: circa 11th century B.C.E.
Medium: Unglazed red earthenware (redware) with beaten paddle



Title: Fragment of a Vessel

Date: circa 11th century B.C.E.
Medium: Unglazed red earthenware (redware) with combed decoration

Title: Thirty-Two Handle Fragments from Red-Figure Kylikes

Date: n.d.
Medium: Earthenware with slip-painted decoration

Title: Plate

Date: circa 1760
Medium: Polychrome tin-glazed earthenware (delftware)

Title: Forty-Five Sherds of Red-Figure Vessels

Date: n.d.
Medium: Earthenware with slip-painted decoration and black glaze



Title: Foliate Wine Cup and Stand with Stylized Chrysanthemum Decoration

Date: circa 1200
Primary Maker: Unknown Artist
Medium: Stoneware with blue-green (celadon) glaze and carved, incised, and black-and-white clay inlaid (sanggam) decoration, with later gold lacquer repairs

Title: Oil Lamp

Date: 5th - 6th century
Medium: Terracotta

Title: Oil Lamp

Date: 5th - 6th century

Medium: Terracotta

Title: Oil Lamp

Date: 5th - 6th century

Medium: Terracotta

Title: Oil Lamp

Date: 5th - 6th century

Medium: Terracotta



Title: Mirror Plaque [so-called Tushingham Plaque]

Date: 5th - 8th century

Medium: Unglazed molded earthenware with cold-paint decoration

Title: St. Menas Ampulla

Date: 5th - 6th century

Medium: Terracotta



Title: St. Menas Ampulla

Date: circa 610 - 640

Medium: Unglazed molded earthenware



Title: Tea Bowl

Date: 12th - 13th century

Primary Maker: Unknown Artist

Medium: Jian (stoneware), with 'hare's fur' glaze



Title: Honan-Type Bowl

Date: n.d.

Primary Maker: Sakuma Family

Medium: Glazed earthenware (Mashiko kilns)



Title: Water Dropper

Date: n.d.

Primary Maker: Sakuma Family

Medium: Glazed stoneware (Mashiko kilns)



Title: Water Dropper

Date: 19th century

Primary Maker: Unknown

Artist

Medium: Porcelain with pale glaze and molded decoration of crane among clouds



Title: Water Dropper

Date: n.d.

Medium: Glazed earthenware



Title: Water Dropper

Date: n.d.

Primary Maker: Funaki Family

Medium: Glazed earthenware with slip-painted decoration (Fushina kilns)



Title: Water Dropper

Date: n.d.

Primary Maker: Funaki Family

Medium: Glazed earthenware with slip-painted decoration (Fushina kilns)



Title: Water Dropper

Date: n.d.

Primary Maker: Funaki Family

Medium: Glazed earthenware with slip-painted decoration (Fushina kilns)



Title: Water Dropper

Date: n.d.

Primary Maker: Funaki Family

Medium: Glazed earthenware with slip-painted decoration (Fushina kilns)



Title: Bowl

Date: n.d.

Medium: Glazed earthenware (Hagi kilns)



Title: Water Dropper

Date: n.d.

Medium: Porcelain with underglaze polychrome decoration in Kakiemon ...



Title: Water Dropper

Date: n.d.

Medium: Glazed earthenware



Title: Guan (bowl with lobed handles)
Date: circa 2500 - 2200 B.C.E.
Medium: Unglazed earthenware with slip-painted decoration



Title: Guan (bowl with looped handles)
Date: circa 2500 - 2200 B.C.E.
Medium: Unglazed earthenware with slip-painted decoration

Title: Seventeen Black-Figure Vessel Fragments
Date: n.d.
Medium: Earthenware with slip-painted decoration



Title: Guan (bowl with looped handles)
Date: circa 2500 - 2200 B.C.E.
Medium: Unglazed earthenware with slip-painted decoration (in red and black on buff colored body)



Title: Guan (bowl with looped handles)
Date: circa 2500 - 2200 B.C.E.
Medium: Unglazed earthenware with slip-painted decoration

Title: Base Ring Bowl
Date: 1450 - 1350 B.C.E.
Medium: Pottery



Title: Pan (basin)
Date: circa 3000 - 2800 B.C.E.
Medium: Unglazed earthenware with slip-painted decoration



Title: Guan (bowl with looped handles)
Date: circa 2500 - 2200 B.C.E.
Medium: Unglazed earthenware with slip-painted decoration



Title: Guan (bowl with looped handles)
Date: circa 2500 - 2200 B.C.E.
Medium: Unglazed earthenware with slip-painted decoration



Title: Guan (bowl)

Date: circa 2500 - 2200 B.C.E.

Medium: Unglazed earthenware with slip-painted decoration

Title: Vessel Fragment: Rim Sherd from a Plate

Date: n.d.

Medium: Earthenware with slip-painted decoration

Title: Vessel Fragment: Rim Sherd from a Plate

Date: n.d.

Medium: Earthenware with slip-painted decoration



**Title: Statuette
Fragment: Head of a Woman**

Date: circa early 5th century B.C.E.

Medium: Slip-painted earthenware with cold-painted decoration



Title: Tea Jar

Date: probably 19th century

Primary Maker: Chodo Imai

Medium: Glazed stoneware with feldspar ishihaze (Shigaraki ware)



Title: Base Ring Bowl

Date: 1450 - 1350 B.C.E.

Medium: Pottery



Title: Base-Ring Jug (or Bilbil)

Date: 1425/15 - 1340 B.C.E.

Medium: Slip-painted earthenware

Title: Lamp

Date: 5th - 6th century

Medium: Terracotta; worn surface with brown slip

Title: Fragment of a Bowl: Base with Decorative Medallion

Date: 3rd - 2nd century B.C.E.

Medium: Slip-painted earthenware with molded decoration in relief with leaves radiating from central medallion



Title: White slip bowl

Date: circa 1400 - 1275 B.C.E.

Medium: Red clay with white slip and brown paint



Title: Tripod Jar with Cover

Date: circa 2500 B.C.E.

Medium: Burnished unglazed earthenware (blackware)

Title: Vase

Date: circa 1920

Primary Maker: Unknown Artist

Medium: Underglaze and overglaze polychrome enamel decoration on porcelain

Title: Plate Fragment: Base

Date: n.d.

Medium: Earthenware

Title: Vessel Fragment

Date: 5th - 6th century

Medium: Slip-painted earthenware with roulette decoration



Title: White Slip Bowl

Date: circa 1400 - 1275 B.C.E.

Medium: Red clay with white slip and brown paint

Title: Bowl or Casserole Lid

Date: 3rd century

Medium: Earthenware



Title: Guan (bowl with looped handles)

Date: circa 2500 - 2200 B.C.E.

Medium: Unglazed earthenware with slip-painted decoration



Title: Guan (bowl with looped handles)

Date: circa 2500 - 2200 B.C.E.

Medium: Unglazed earthenware with slip-painted decoration



Title: Guan (bowl with looped handles)
Date: circa 2500 - 2200 B.C.E.
Medium: Unglazed earthenware with slip-painted decoration



Title: Guan (bowl with looped handles)
Date: circa 2500 - 2200 B.C.E.
Medium: Unglazed earthenware with slip-painted decoration



Title: Guan (bowl with looped handles)
Date: circa 2500 - 2200 B.C.E.
Medium: Unglazed earthenware with slip-painted decoration

Title: Casserole Lid Handle or Platter Fragment
Date: 1st century
Medium: Earthenware with slip-painted decoration



Title: Guan (bowl with handles)
Date: circa 2500 - 2200 B.C.E.
Medium: Unglazed earthenware with slip-painted and modeled decoration



Title: Guan (bowl with handles)
Date: circa 2500 - 2200 B.C.E.
Medium: Unglazed earthenware with slip-painted decoration



Title: Guan (bowl with handles)
Date: circa 2500 - 2200 B.C.E.
Medium: Unglazed earthenware with slip-painted decoration



Title: Hu (jug with handles)
Date: circa 2500 - 2200 B.C.E.
Medium: Unglazed earthenware with slip-painted and incised decoration

Title: Vessel Fragment: Base and Side of a Bowl
Date: n.d.
Medium: Slip-painted earthenware, micaceous fabric

**Title: Vessel Fragment:
Rim**

Date: n.d.

Medium: Earthenware with red and brown slip-painted decoration



Title: Guan (bowl)

Date: circa 2500 - 2200 B.C.E.

Medium: Unglazed earthenware with slip-painted decoration



Title: Guan (bowl with handles)

Date: circa 2500 - 2200 B.C.E.

Medium: Unglazed earthenware with slip-painted decoration



Title: Vessel Fragment

Date: 2500 - 2000 B.C.E.

Medium: Earthenware with slip-painted decoration



Title: Guan (bowl with handles)

Date: circa 2500 - 2200 B.C.E.

Medium: Unglazed earthenware with slip-painted decoration



Title: Guan (bowl with handles)

Date: circa 2500 - 2200 B.C.E.

Medium: Unglazed earthenware with slip-painted decoration



Title: Guan (bowl with handles)

Date: circa 2500 - 2200 B.C.E.

Medium: Unglazed earthenware with slip-painted decoration

Title: Guan (bowl with handles)

Date: circa 2500 - 2200 B.C.E.

Medium: Unglazed earthenware with slip-painted decoration



Title: Guan (bowl with handles)

Date: circa 2500 - 2200 B.C.E.

Medium: Unglazed earthenware with slip-painted decoration



Title: Hu (jar with handles)

Date: circa 2500 - 2200 B.C.E.

Medium: Unglazed earthenware with slip-painted decoration



Title: Pan (dish)

Date: 907 - 1125

Medium: Partially slip-painted stoneware with partial sancai lead glaze and stamped decoration

Title: Vessel Fragment: Rim

Date: 2000 - 1600 B.C.E.

Medium: Earthenware with slip-painted decoration

Title: Vessel Fragment: Stem from a Minyan Goblet

Date: 2000 - 1600 B.C.E.

Medium: Burnished earthenware with incised decoration

Title: Vessel Fragment: Base and Stem from a Kylix

Date: 1600 - 1100 B.C.E.

Medium: Earthenware

Title: Vessel Fragments: Seven Unidentified Sherds

Date: n.d.

Medium: Earthenware, with evidence of burning

Title: Vessel Fragment

Date: n.d.

Medium: Earthenware with slip-painted decoration on exterior

Title: Vessel Fragment: Rim from a Skyphos

Date: circa first half of 8th century B.C.E.

Medium: Earthenware with slip-painted decoration

Title: Vessel Fragment: Rim from a Skyphos

Date: circa first half of 7th century B.C.E.

Medium: Earthenware with slip-painted decoration

Title: White slip bowl
Date: circa 1400 - 1275
Medium: Red clay with white slip and brown paint

**Title: Vessel Fragment:
Rim from a Kotyle**
Date: circa 750 - 700 B.C.E.
Medium: Earthenware with slip-painted decoration

**Title: Vessel Fragment:
Rim from a Kotyle**
Date: circa 7th century B.C.E.
Medium: Earthenware with slip-painted decoration

**Title: Vessel Fragment:
Sherd from a Kotyle**
Date: circa 650 - 600 B.C.E.
Medium: Earthenware with slip-painted decoration

**Title: Vessel Fragment:
Sherd of Lid from a Pyxis**
Date: n.d.
Medium: Earthenware with slip-painted decoration

**Title: Vessel Fragment:
Sherd of the Body and
Rim from a Pyxis**
Date: n.d.
Medium: Earthenware with slip-painted decoration

**Title: Vessel Fragment:
Sherd from the Lid of a
Pyxis**
Date: circa late 8th - first quarter 7th century B.C.E.
Medium: Earthenware with slip-painted decoration

**Title: Vessel Fragment:
Sherd from the Body of
a Pyxis**
Date: n.d.
Medium: Earthenware with slip-painted decoration

**Title: Vessel Fragment:
Sherd of the Body, Rim
and Handle Base**
Date: n.d.
Primary Maker: Unknown Artist
Medium: Earthenware with slip-painted decoration

**Title: Vessel Fragment:
Sherd from the Body
and Foot on an Ovoid
Aryballos**

Date: n.d.

Medium: Earthenware with
slip-painted decoration

**Title: Vessel Fragment:
Sherd of the Body and
Base of a Conical
Oinochoe**

Date: circa last quarter of 8th
century B.C.E.

Medium: Earthenware with
slip-painted decoration

Title: Hu (vase)

Date: circa 1st century B.C.E.

Medium: Unglazed
earthenware (grayware) with
incised and applied molded
decoration



**Title: Bowl with Cranes,
Willow, and Lotus Plant
Decoration**

Date: 13th century

Primary Maker: Unknown
Artist

Medium: Stoneware with blue-
green (celadon) glaze and
black-and-white clay inlaid
(sanggam) decoration

**Title: Vessel Fragments:
Seventeen Sherds from
the Bodies of Aryballoi**

Date: 6th century B.C.E.

Medium: Earthenware with
slip-painted decoration

Title: Guan Jar

Date: circa 2nd - 1st century B.
C.E.

Medium: Stoneware with
beaten or impressed repeat-
pattern decoration and partial
natural ash glaze

Title: Hu Vase

Date: 206 B.C.E. - 220

Medium: Stoneware with
modeled, incised, combed, and
applied decoration with partial
natural ash glaze

**Title: Vessel Fragment:
Shoulder and Handle
from a Miniature
Aryballos**

Date: n.d.

Medium: Earthenware with
slip-painted decoration

**Title: Vessel Fragments:
Two Sherds from the
Bodies of Quatrefoil
Aryballoi**

Date: late 6th century B.C.E.

Medium: Earthenware with
slip-painted decoration

**Title: Vessel Fragments:
Four Lips from Alabastra**

Date: 6th century B.C.E.

Medium: Earthenware with
slip-painted decoration

**Title: Vessel Fragment:
Body and Base from a
Conical Oinochoe**

Date: n.d.

Medium: Earthenware with
slip-painted decoration

**Title: Vessel Fragment:
Bottom from a Conical
Oinochoe**

Date: n.d.

Medium: Earthenware with
slip-painted decoration

Title: Lamp Filler (?)

Date: circa 5th century B.C.E.

Medium: Earthenware with
slip-painted decoration

Title: White slip bowl

Date: 1400 - 1275 B.C.E.

Medium: Red clay with white
slip and brown paint

**Title: Vessel Fragment:
Side and Bottom from a
Flat-Bottomed Oinochoe**

Date: n.d.

Medium: Earthenware with
slip-painted decoration

Title: Lamp

Date: circa 5th/6th century

Medium: Earthenware with
incised decoration



**Title: Covered Cinerary
Urn**

Date: 8th - 9th century

Primary Maker: Unknown
Artist

Medium: Unglazed stoneware
with incised and impressed
decoration and natural ash
glaze deposits

**Title: Vessel Fragment:
Mouth and Neck of a
Trefoil Oinochoe**

Date: n.d.

Medium: Earthenware with
slip-painted decoration



Title: Funerary Vessel with Lid
Date: 13th century
Medium: Glazed stoneware with qingbai glaze and applied and molded and modeled decoration

Title: Vessel Fragments: Nine Shoulder, Lid and Handle Sherds from Oinochoai
Date: n.d.
Medium: Earthenware with slip-painted decoration

Title: lower torso- female
Date: 4500 - 4000 B.C.E.
Medium: Black toned unglazed terracotta

Title: Head
Date: 4500 - 4000 B.C.E.
Medium: Black unglazed terracotta

Title: Head
Date: 4500 - 4000 B.C.E.
Medium: Black unglazed terracotta

Title: Vessel Fragment: Bottom and Base from an Oinochoe
Date: n.d.
Medium: Earthenware with slip-painted decoration

Title: head and upper torso
Date: 4500 - 4000 B.C.E.
Medium: Black terracotta

Title: Head
Date: 4500 - 4000 B.C.E.
Medium: Black unglazed terracotta

Title: Head
Date: 4500 - 4000 B.C.E.
Medium: Black unglazed terracotta

**Title: Vessel Fragments:
Four Body Sherds from
Oinochoai**

Date: n.d.

Medium: Earthenware with
slip-painted decoration

**Title: Vessel Fragment:
Body and Base of a Cup**

Date: n.d.

Medium: Earthenware with
slip-painted decoration

**Title: Vessel Fragments:
Six Rim Sherds from
Cups**

Date: 6th century B.C.E.

Medium: Earthenware with
slip-painted decoration

**Title: Vessel Fragments:
Eighteen Body Sherds
from Cups**

Date: 6th century B.C.E.

Medium: Earthenware

**Title: Vessel Fragments:
Rim and Body Sherd
and Knob with Part of a
Lid of a Pyxis**

Date: n.d.

Medium: Earthenware with
slip-painted decoration

**Title: Vessel Fragments:
Five Lid Sherds from
Pyxides**

Date: 6th century B.C.E.

Medium: Earthenware with
slip-painted decoration

**Title: Vessel Fragments:
Five Knobs from Lids of
Pyxides**

Date: probably 6th century B.C.
E.

Medium: Earthenware

**Title: Vessel Fragment:
Rim from a Krater**

Date: 6th century B.C.E.

Medium: Earthenware with
slip-painted decoration

Title: fragment

Date: 4500 - 4000 B.C.E.

Medium: Black terracotta

Title: fragment, lower torso

Date: 4500 - 4000 B.C.E.

Medium: Black terracotta

Title: fragment, lower torso-female

Date: 4500 - 4000 B.C.E.

Medium: Black terracotta

Title: Vessel Fragment: Body and Handle Bases from a Kothon

Date: n.d.

Medium: Earthenware with slip-painted decoration

Title: Head

Date: 4500 - 4000 B.C.E.

Medium: Black terracotta

Title: Head

Date: 4500 - 4000 B.C.E.

Medium: Black unglazed terracotta

Title: Head

Date: 4500 - 4000 B.C.E.

Medium: Black unglazed terracotta

Title: Head

Date: 4500 - 4000 B.C.E.

Medium: Black unglazed terracotta

Title: Head

Date: 4500 - 4000 B.C.E.

Medium: Black unglazed terracotta

Title: Head

Date: 4500 - 4000 B.C.E.

Medium: Black unglazed terracotta

Title: fragment - perhaps
a bed
Date: 4500 - 4000 B.C.E.
Medium: Black unglazed
terracotta

Title: Head
Date: 4500 - 4000 B.C.E.
Medium: Black-grey terracotta

Title: female torso
Date: 4500 - 4000 B.C.E.
Medium: Black terracotta

Title: Lamp: Venus and
Cupid
Date: circa 1st or 2nd century
Medium: Molded earthenware



Title: Lamp: Europa and
the Bull
Date: circa 1st or 2nd century
Medium: Molded earthenware

Title: Lamp
Date: circa 5th century B.C.E.
Medium: Earthenware with
slip-painted decoration



Title: Fishbowl
Date: n.d.
Medium: Blue and white
ceramic



Title: Hu Vase
Date: circa 2500 - 2200 B.C.E.
Medium: Unglazed
earthenware with slip-painted
decoration

Title: Bowl with Deer,
Crane and Lingzhi
Fungus Longevity
Designs
Date: 19th century
Primary Maker: Unknown
Artist
Medium: White porcelain bowl
with underglaze blue
decoration of images of
longevity symbols: deer, crane,
and lingzhi fungus, with the
Chinese character for
'longevity' (shou) in bottom
center of basin in underglaze
blue



Title: Jar

Date: circa 1500 - 1000 B.C.E.

Medium: Unglazed burnished earthenware with incised, stamped and cord-impressed decoration

Title: Bucchero jug

Date: circa 1150 - 1075 B.C.E.

Medium: Light clay with grey slip



Title: Storage Jar (Tsubo)

Date: 14th - 15th century

Medium: Handbuilt stoneware with natural ash glaze and kiln deposits



Title: Footed Tray with 'Three Stars'

Date: 17th century

Medium: Porcelain with underglaze blue-and-white decoration



Title: Bowl with Eight Immortals

Date: Qianlong reign (1736 - 1795)

Primary Maker: Unknown Artist

Medium: Porcelain with underglaze blue decoration



Title: Bowl

Date: Qianlong reign (1736 - 1795)

Primary Maker: Unknown Artist

Medium: Porcelain with underglaze blue decoration

Title: Brush Pot

Date: 18th - 19th century

Primary Maker: Unknown Artist

Medium: Soft-paste porcelain (huashi) with molded and applied decoration

Title: Footed Tray

Date: n.d.

Medium: Porcelain with underglaze blue-and-white decoration



Title: Jar with Auspicious Chinese Characters

Date: 17th - 18th century

Primary Maker: Unknown Artist

Medium: Glazed porcelain with underglaze brown iron-oxide painted decoration

Title: Vase (Hu)

Date: 206 B.C.E. - 8 C.E.

Medium: Unglazed earthenware with remains of polychrome cold-painted decoration

Title: Tripod Cooking Vessel (Li)

Date: 3000 - 2000 B.C.E.

Medium: Red-orange earthenware

Title: Tripod Cooking Vessel (Liding)

Date: 2000 - 1300 B.C.E.

Medium: Burnished black earthenware



Title: Water Dropper in the Shape of Flower Petals and a Butterfly

Date: 19th century

Primary Maker: Unknown Artist

Medium: Glazed porcelain with underglaze cobalt blue painted decoration



Title: Pedestalled Jar

Date: 5th century - 6th century

Primary Maker: Unknown Artist

Medium: Unglazed stoneware with impressed and combed decoration and natural ash glaze deposits



Title: Liding Tripod

Date: late 2nd or early 1st millennium B.C.E.

Medium: Burnished black earthenware



Title: Tomb Figure (Bixie): Ram

Date: 317 - 419

Medium: Green-glazed (celadon) earthenware



Title: Bowl

Date: 16th century

Primary Maker: Unknown Artist

Medium: Glazed porcelain (white ware, baekja)

Title: Ritual Dish

Date: 19th century

Primary Maker: Unknown Artist

Medium: Glazed porcelain (white ware, baekja)

Title: Bottle

Date: 19th century

Primary Maker: Unknown

Artist

Medium: Glazed porcelain
(white ware, baekja)

**Title: Handled Jar**

Date: 3000 - 2000 B.C.E.

Medium: Partially glazed
earthenware with slip-painted
decoration

Title: Jar

Date: 206 B.C.E. - 220 C.E.

Medium: Glazed (green)
earthenware

Title: Jar

Date: probably 7th century

Medium: Glazed (white)
earthenware

Title: Bowl

Date: 960 - 1279

Medium: Glazed (brown)
earthenware

Title: Covered jar

Date: 960 - 1126

Medium: Glazed (white)
porcelain

Title: Bowl

Date: 960 - 1279

Medium: Glazed (brown)
earthenware

Title: Bowl

Date: 11th - 12th century

Medium: Glazed (white)
porcelain (Ding ware)

Title: Bowl

Date: 11th - 12th century

Medium: Glazed (white)
porcelain (Ding ware)



Title: Jar
Date: late 19th - early 20th century
Medium: Porcelain with underglaze decoration in blue and white



Title: Jar
Date: 7th century
Medium: Stoneware with partial natural ash glaze decoration (sue ware)



Title: Wine Bottle with Dragon and Flaming Pearl Decoration
Date: First half of 19th century
Primary Maker: Unknown Artist
Medium: Glazed porcelain with underglaze cobalt blue painted decoration

Title: Boy leaning on herm
Date: 2nd - 1st century B.C.E.
Medium: Unglazed earthenware



Title: Octopus vase
Date: n.d.
Primary Maker: Unknown Artist
Medium: Plaster

Title: Miniature bowls and cups
Date: most of late 6th or 5th century, B.C.E.

Title: Fragment from a lekanis
Date: 5th century B.C.E.



Title: Flask with Waterfowl and Plant Decoration
Date: First half of 15th century
Primary Maker: Unknown Artist
Medium: Glazed stoneware (buncheong) with black-and-white clay inlaid (sanggam) decoration



Title: Bottle with Plant Decoration
Date: Late 15th - early 16th century
Primary Maker: Unknown Artist
Medium: Glazed stoneware (buncheong) with underglaze iron-oxide (jeolwha) decoration



Title: Bowl

Date: 15th - 16th century

Primary Maker: Unknown

Artist

Medium: Glazed porcelainous stoneware with scalloped edge and underglaze-blue decoration

Title: Covered Bowl

Date: 15th - 16th century

Primary Maker: Unknown

Artist

Medium: Glazed porcelainous stoneware with underglaze-blue decoration



Title: Small Jar

Date: 15th - 16th century

Primary Maker: Unknown

Artist

Medium: Glazed porcelainous stoneware with underglaze-blue decoration

Title: Platter

Date: circa 1998

Primary Maker: Yoon Kwang-Cho (, Yun Gwang-Jo)

Medium: Glazed stoneware with incised decoration in brushed slip (buncheong ware)



Title: Vessel

Date: circa 2500 B.C.E.

Primary Maker: Unknown

Artist

Medium: Unglazed low-fired earthenware with carved, incised and applied decoration



Title: Translated Vase

Date: 2007

Primary Maker: Yeessookyung

Medium: Ceramic fragments, epoxy, and gold leaf



Title: Tea Bowl

Date: 12th - 13th century

Primary Maker: Unknown

Artist

Medium: Glazed earthenware with over-glaze decoration in ash paste and slip paste

Title: Cover for Jar

Date: 960 - 1126

Medium: Glazed (white) porcelain

Title: Two Fragments of Red Figure Calyx-Krater

Date: circa 430 B.C.E.

Primary Maker: Polion

Medium: Earthenware with slip-painted decoration



**Title: Black-Figure
Lekythos**

Date: circa late 6th - early 5th
century B.C.E.

Medium: Earthenware with
slip-painted decoration



**Title: Lid of Pyxis (so-
called Lebes Gamikos)**

Date: 420 - 400 B.C.E.

Medium: Earthenware with
slip-painted decoration



**Title: Buddhist Arhat (K:
Nahan)**

Date: 12th century

Primary Maker: Unknown
Artist

Medium: Stoneware with
celadon glaze, and underglaze
incised decoration, and inlays
of white and iron-oxide brown
slip-painted decoration
(sanggam).

**Title: Jar with Grass and
Butterfly Designs**

Date: circa 18th - early 19th
century

Primary Maker: Unknown
Artist

Medium: Glazed porcelain
with underglaze cobalt blue
painted decoration

**Title: Jar with Floral
Designs**

Date: 19th century

Primary Maker: Unknown
Artist

Medium: Glazed porcelain
with underglaze cobalt blue
painted decoration



Title: Pedestalled Jar

Date: 5th - 6th century

Primary Maker: Unknown
Artist

Medium: Unglazed stoneware
with impressed decoration and
natural ash glaze deposits



Title: Pilgrim Flask
Date: n.d.
Primary Maker: Unknown
Artist
Medium: Stoneware with partial natural ash glaze decoration (sue ware)



Title: Ritual Pitcher
Date: n.d.
Primary Maker: Unknown
Artist
Medium: Stoneware with partial natural ash glaze decoration



Title: Jar with Floral Designs
Date: 19th century
Primary Maker: Unknown
Artist
Medium: Glazed porcelain with underglaze cobalt blue painted decoration



Title: Imari Large Covered Bowl
Date: n.d.
Primary Maker: Unknown
Artist
Medium: Porcelain



Title: Brush Pot
Date: n.d.
Primary Maker: Unknown
Artist
Medium: Porcelain



Title: Jar
Date: circa 3rd - 5th century
Primary Maker: Unknown
Artist
Medium: Stoneware



Title: Storage Jar
Date: 5th - 6th century
Primary Maker: Unknown
Artist
Medium: Stoneware



Title: Dish
Date: 15th century
Primary Maker: Unknown
Artist
Medium: Stoneware with green celadon glaze



Title: Dish
Date: 15th century
Primary Maker: Unknown
Artist
Medium: Porcelain with cobalt blue underglaze

Title: Jardinière

Date: 15th century

Primary Maker: Unknown

Artist

Medium: Stoneware with celadon glaze

Title: Dish

Date: circa 1550

Primary Maker: Unknown

Artist

Medium: Porcelain with cobalt blue underglaze



Title: Meiping Vase

Date: 16th century

Primary Maker: Unknown

Artist

Medium: Porcelain with cobalt blue overglaze and white details



Title: Covered Meiping Vase

Date: 16th - early 17th century

Primary Maker: Unknown

Artist

Medium: Porcelain with cobalt blue underglaze



Title: Dish

Date: 1590 - 1610

Primary Maker: Unknown

Artist

Medium: Porcelain with cobalt blue underglaze



Title: Deep Dish

Date: late 16th century

Primary Maker: Unknown

Artist

Medium: Porcelain with cobalt blue underglaze



Title: Dish

Date: late 16th to early 17th century

Primary Maker: Unknown

Artist

Medium: Porcelain with enamel overglazes



Title: Incense Burner

Date: late 16th to early 17th century

Primary Maker: Unknown

Artist

Medium: Glazed porcelain



Title: Large Dish

Date: circa 1610 - 1620

Primary Maker: Unknown

Artist

Medium: Porcelain with cobalt blue underglaze

**Title: Rimmed Bowl
(Klapmuts)**

Date: first quarter of the 17th century

Primary Maker: Unknown
Artist

Medium: Porcelain with cobalt blue underglaze



Title: Deep Dish

Date: circa 1600

Primary Maker: Unknown

Artist

Medium: Porcelain with cobalt blue underglaze

Title: Bowl

Date: early 17th century

Primary Maker: Unknown

Artist

Medium: Porcelain with cobalt blue underglaze



Title: Libation Cup

Date: early 17th century

Primary Maker: Unknown

Artist

Medium: Glazed porcelain with molded design



**Title: Guanyin and the
Filial Parrot**

Date: 17th century

Primary Maker: Unknown

Artist

Medium: Porcelain

Title: Vase

Date: circa 1670

Primary Maker: Unknown

Artist

Medium: Porcelain with cobalt blue underglaze and enamel overglaze



Title: Vessel

Date: n.d.

Primary Maker: Unknown

Artist

Medium: Stoneware



Title: Sleeping Cat

Date: circa 1920

Primary Maker: Unknown

Artist

Medium: Porcelain, overglaze enamels (Kutani ware)