

# Basic Report

---

**Title: Blotter Corner**  
**("Pine Needle" pattern)**  
**Date:** circa 1902  
**Primary Maker:** Tiffany Studios  
**Medium:** Gilt cast bronze

**Title: Blotter Corner, in**  
**Viking Pattern**  
**Date:** 1920s  
**Primary Maker:** Marshall Field  
and Company Craft Shop  
**Medium:** Bronze

**Title: Blotter Corner, in**  
**Viking Pattern**  
**Date:** 1920s  
**Primary Maker:** Marshall Field  
and Company Craft Shop  
**Medium:** Bronze

**Title: Blotter Corner, in**  
**Viking Pattern**  
**Date:** 1920s  
**Primary Maker:** Marshall Field  
and Company Craft Shop  
**Medium:** Bronze

**Title: Blotter Corner, in**  
**Viking Pattern**  
**Date:** 1920s  
**Primary Maker:** Marshall Field  
and Company Craft Shop  
**Medium:** Bronze

**Title: Creamer**  
**Date:** circa 1905  
**Primary Maker:** Unknown  
Artist  
**Medium:** Silver

**Title: Tray**  
**Date:** circa 1910  
**Primary Maker:** Unknown  
Artist  
**Medium:** Brass

**Title: Bedside Lamp**  
**(Kandem Lamp)**  
**Date:** 1928 (design)  
**Primary Maker:** Marianne  
Brandt  
**Medium:** Lacquered steel  
plate with original electrical  
cord

**Title: Tray**  
**Date:** circa 1902  
**Primary Maker:** Jan W.  
Eisenlöffel  
**Medium:** Brass

---

**Title: Kettle****Date:** circa 1904**Primary Maker:** Jan W.

Eisenlöffel

**Medium:** Brass with wooden  
knop and wicker-bound handle

---

**Title: Letter Opener:****Crouching Panther****Date:** n.d.**Primary Maker:** Anna Vaughn  
Hyatt Huntington**Medium:** Cast bronze

---

**Title: Door Knob****Date:** 1893 - 1894**Primary Maker:** Louis H.

Sullivan

**Medium:** Painted cast iron

---

**Title: Door Knob****Date:** 1893 - 1894**Primary Maker:** Louis H.

Sullivan

**Medium:** Painted cast iron

---

**Title: Door Knob****Date:** 1893 - 1894**Primary Maker:** Louis H.

Sullivan

**Medium:** Painted cast iron

---

**Title: Ornamental Railing****Date:** n.d.**Primary Maker:** Louis H.

Sullivan

**Medium:** Iron

---

**Title: Ornamental Railing  
(section of an elevator  
screen)****Date:** n.d.**Primary Maker:** Louis H.

Sullivan

**Medium:** Iron

---

**Title: Bowl****Date:** circa 1918**Primary Maker:** Falick Novick**Medium:** Hammered silver

---

**Title: Ribbon Torque****Date:** circa 1892 (facsimile)**Primary Maker:** Edmond  
Johnson



**Title: Gold Bar Torque**

**Date:** circa 1892 (facsimile)

**Primary Maker:** Edmond Johnson

**Title: Ornamental Frieze**

**Date:** n.d.

**Primary Maker:** Louis H. Sullivan

**Medium:** Gilded cast iron

**Title: Ornamental Frieze**

**Date:** n.d.

**Primary Maker:** Louis H. Sullivan

**Medium:** Gilded cast iron



**Title: Ornamental Frieze**

**Date:** n.d.

**Primary Maker:** Louis H. Sullivan

**Medium:** Cast gilded iron

**Title: Framing Elements**

**Date:** n.d.

**Primary Maker:** Louis H. Sullivan

**Medium:** Gilded iron

**Title: Bordered Panel**

**Date:** n.d.

**Primary Maker:** Louis H. Sullivan

**Medium:** Gilded iron

**Title: 'T' Plate**

**Date:** n.d.

**Primary Maker:** Louis H. Sullivan

**Medium:** Stamped copper

**Title: 'T' Plate**

**Date:** n.d.

**Primary Maker:** Louis H. Sullivan

**Medium:** Stamped copper

**Title: Push Plate with Cast Iron Handle Added**

**Date:** n.d.

**Primary Maker:** Louis H. Sullivan

**Medium:** Painted cast iron

**Title: Two Connected  
Door Knobs**

**Date:** 1893 - 1894

**Primary Maker:** Louis H.  
Sullivan

**Medium:** Painted cast iron

**Title: Door Plate**

**Date:** 1893 - 1894

**Primary Maker:** Louis H.  
Sullivan

**Medium:** Painted cast iron

**Title: Door Plate**

**Date:** 1893 - 1894

**Primary Maker:** Louis H.  
Sullivan

**Medium:** Painted cast iron

**Title: Door Plate**

**Date:** 1893 - 1894

**Primary Maker:** Louis H.  
Sullivan

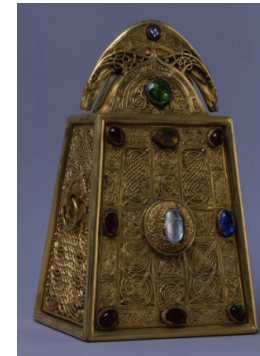
**Medium:** Painted cast iron

**Title: Door Plate**

**Date:** 1893 - 1894

**Primary Maker:** Louis H.  
Sullivan

**Medium:** Painted cast iron

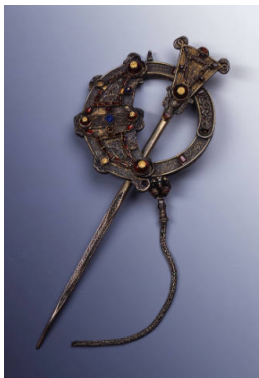


**Title: Reliquary of St.  
Patrick's Bell (after  
medieval original by  
Cudulig Ua Inmainen)**

**Date:** circa 1891 - 1892  
(facsimile, after circa 1100  
original)

**Primary Maker:** Edmond  
Johnson

**Medium:** Wrought and cast  
unidentified base metal with  
gilt, silver, and clear and  
colored glass decoration



**Title: The "Tara" Brooch**

**Date:** circa 1891 - 1892  
(facsimile, after 8th - century  
original)

**Primary Maker:** Edmond  
Johnson

**Medium:** Wrought and cast  
copper alloy with silver-gilt?,  
enamel, and colored glass  
decoration



**Title: Queen's Brooch**

**Date:** circa 1892 (facsimile)

**Primary Maker:** Edmond  
Johnson



**Title: Gold Ribbon  
Torque**

**Date:** circa 1892 (facsimile)

**Primary Maker:** Edmond  
Johnson





**Title: Gold Ribbon Torque**  
**Date:** circa 1892 (facsimile)  
**Primary Maker:** Edmond Johnson



**Title: Gold Ribbon Torque**  
**Date:** circa 1892 (facsimile)  
**Primary Maker:** Edmond Johnson



**Title: Gold Ribbon Torque**  
**Date:** circa 1892 (facsimile)  
**Primary Maker:** Edmond Johnson



**Title: Gold Ribbon Torque**  
**Date:** circa 1892 (facsimile)  
**Primary Maker:** Edmond Johnson



**Title: Gold Ribbon Torque**  
**Date:** circa 1892 (facsimile)  
**Primary Maker:** Edmond Johnson



**Title: Gold Ribbon Torque**  
**Date:** circa 1892 (facsimile)  
**Primary Maker:** Edmond Johnson



**Title: Gold Penannular Ring**  
**Date:** circa 1892 (facsimile)  
**Primary Maker:** Edmond Johnson



**Title: Gold Penannular Ring**  
**Date:** circa 1892 (facsimile)  
**Primary Maker:** Edmond Johnson



**Title: Gold Penannular Ring**  
**Date:** circa 1892 (facsimile)  
**Primary Maker:** Edmond Johnson



**Title: Gold Penannular Ring**  
**Date:** circa 1892 (facsimile)  
**Primary Maker:** Edmond Johnson



**Title: Gold Penannular Ring**  
**Date:** circa 1892 (facsimile)  
**Primary Maker:** Edmond Johnson

**Title: Gold Penannular Ring**  
**Date:** circa 1892 (facsimile)  
**Primary Maker:** Edmond Johnson



**Title: Gold Penannular Ring**  
**Date:** circa 1892 (facsimile)  
**Primary Maker:** Edmond Johnson



**Title: Gold Penannular Ring**  
**Date:** circa 1892 (facsimile)  
**Primary Maker:** Edmond Johnson



**Title: Gold Penannular Ring**  
**Date:** circa 1892 (facsimile)  
**Primary Maker:** Edmond Johnson



**Title: Gold Penannular Ring**  
**Date:** circa 1892 (facsimile)  
**Primary Maker:** Edmond Johnson



**Title: Gold Penannular Ring**  
**Date:** circa 1892 (facsimile)  
**Primary Maker:** Edmond Johnson



**Title: Gold Penannular Ring**  
**Date:** circa 1892 (facsimile)  
**Primary Maker:** Edmond Johnson



**Title: Gold Penannular Ring**  
**Date:** circa 1892 (facsimile)  
**Primary Maker:** Edmond Johnson



**Title: Gold Penannular Ring**  
**Date:** circa 1892 (facsimile)  
**Primary Maker:** Edmond Johnson



**Title: Gold Penannular Ring**  
**Date:** circa 1892 (facsimile)  
**Primary Maker:** Edmond Johnson



**Title: Gold Lunula**  
**Date:** circa 1892 (facsimile)  
**Primary Maker:** Edmond Johnson



**Title: Gold Lunula**  
**Date:** circa 1892 (facsimile)  
**Primary Maker:** Edmond Johnson



**Title: Gold Lunula**  
**Date:** circa 1892 (facsimile)  
**Primary Maker:** Edmond Johnson



**Title: Gold Lunula**  
**Date:** circa 1892 (facsimile)  
**Primary Maker:** Edmond Johnson



**Title: Gold Lunula**  
**Date:** circa 1892 (facsimile)  
**Primary Maker:** Edmond Johnson



**Title: Gold Lunula**  
**Date:** circa 1892 (facsimile)  
**Primary Maker:** Edmond Johnson



**Title: Gold Lunula**  
**Date:** circa 1892 (facsimile)  
**Primary Maker:** Edmond Johnson



**Title: Gold Gorget**  
**Date:** circa 1892 (facsimile)  
**Primary Maker:** Edmond Johnson



**Title: Gold Gorget**  
**Date:** circa 1892 (facsimile)  
**Primary Maker:** Edmond Johnson



**Title: Gold Gorget**  
**Date:** circa 1892 (facsimile)  
**Primary Maker:** Edmond Johnson



**Title: Gold Armlet**  
**Date:** circa 1892 (facsimile)  
**Primary Maker:** Edmond Johnson



**Title: Gold Heart-Shaped Bulla**  
**Date:** circa 1892 (facsimile)  
**Primary Maker:** Edmond Johnson

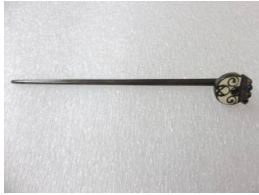
**Title: Bronze Trumpet**  
**Date:** circa 1892 (facsimile)  
**Primary Maker:** Edmond Johnson



**Title: Hand Pin or Hammer-Headed Pin**  
**Date:** circa 1892 (facsimile)  
**Primary Maker:** Edmond Johnson



**Title: Hand Pin or Hammer-Headed Pin**  
**Date:** circa 1892 (facsimile)  
**Primary Maker:** Edmond Johnson



**Title: Hand Pin or Hammer-Headed Pin**  
**Date:** circa 1892 (facsimile)  
**Primary Maker:** Edmond Johnson

**Title: Ring-Pin**  
**Date:** circa 1892 (facsimile)  
**Primary Maker:** Edmond Johnson



**Title: Hand-Pin or Hammer-Headed Pin**  
**Date:** circa 1892 (facsimile)  
**Primary Maker:** Edmond Johnson



**Title: Sunflower Pin**  
**Date:** circa 1892 (facsimile)  
**Primary Maker:** Edmond Johnson



**Title: Ardakillen Brooch**  
**Date:** circa 1892 (facsimile)  
**Primary Maker:** Edmond Johnson



**Title: Penannular Brooch**  
**Date:** circa 1892 (facsimile)  
**Primary Maker:** Edmond Johnson



**Title: Penannular Brooch**  
**Date:** circa 1892 (facsimile)  
**Primary Maker:** Edmond Johnson



**Title: Penannular Brooch from Virginia**  
**Date:** circa 1892 (facsimile)  
**Primary Maker:** Edmond Johnson



**Title: Thistle Brooch**  
**Date:** circa 1892 (facsimile)  
**Primary Maker:** Edmond Johnson



---

**Title: University Brooch**

**Date:** circa 1892 (facsimile)

**Primary Maker:** Edmond Johnson



**Title: Kilkenny Brooch**

**Date:** circa 1892 (facsimile)

**Primary Maker:** Edmond Johnson



**Title: Large Ardagh Brooch**

**Date:** circa 1892 (facsimile)

**Primary Maker:** Edmond Johnson



**Title: Penannular Brooch**

**Date:** circa 1892 (facsimile)

**Primary Maker:** Edmond Johnson



**Title: Small Ardagh Brooch**

**Date:** circa 1892 (facsimile)

**Primary Maker:** Edmond Johnson



**Title: Bronze Armlet**

**Date:** circa 1892 (facsimile)

**Primary Maker:** Edmond Johnson



**Title: Gold Penannular Ring**

**Date:** circa 1892 (facsimile)

**Primary Maker:** Edmond Johnson



**Title: Gold Penannular Ring**

**Date:** circa 1892 (facsimile)

**Primary Maker:** Edmond Johnson



**Title: Gold Penannular Ring**

**Date:** circa 1892 (facsimile)

**Primary Maker:** Edmond Johnson

---

**Title: Gold Penannular Ring**

**Date:** circa 1892 (facsimile)  
**Primary Maker:** Edmond Johnson



**Title: Gold Penannular Ring**

**Date:** circa 1892 (facsimile)  
**Primary Maker:** Edmond Johnson



**Title: Gold Penannular Ring**

**Date:** circa 1892 (facsimile)  
**Primary Maker:** Edmond Johnson



**Title: Gold Penannular Ring**

**Date:** circa 1892 (facsimile)  
**Primary Maker:** Edmond Johnson



**Title: Gold Penannular Ring**

**Date:** circa 1892 (facsimile)  
**Primary Maker:** Edmond Johnson



**Title: Gold Penannular Ring**

**Date:** circa 1892 (facsimile)  
**Primary Maker:** Edmond Johnson



**Title: Gold Penannular Ring**

**Date:** circa 1892 (facsimile)  
**Primary Maker:** Edmond Johnson



**Title: Gold Penannular Ring**

**Date:** circa 1892 (facsimile)  
**Primary Maker:** Edmond Johnson



**Title: Gold Penannular Ring**

**Date:** circa 1892 (facsimile)  
**Primary Maker:** Edmond Johnson



**Title: Gold Penannular Ring**  
**Date:** circa 1892 (facsimile)  
**Primary Maker:** Edmond Johnson



**Title: Gold Penannular Ring**  
**Date:** circa 1892 (facsimile)  
**Primary Maker:** Edmond Johnson



**Title: Gold Penannular Ring**  
**Date:** circa 1892 (facsimile)  
**Primary Maker:** Edmond Johnson



**Title: Gold Penannular Ring**  
**Date:** circa 1892 (facsimile)  
**Primary Maker:** Edmond Johnson



**Title: Gold Dress Fastener**  
**Date:** circa 1892 (facsimile)  
**Primary Maker:** Edmond Johnson



**Title: Bowl**  
**Date:** n.d.  
**Medium:** Bronze



**Title: Gold Dress Fastener**  
**Date:** circa 1892 (facsimile)  
**Primary Maker:** Edmond Johnson



**Title: Gold Dress Fastener**  
**Date:** circa 1892 (facsimile)  
**Primary Maker:** Edmond Johnson

**Title: Gold Dress Fastener**  
**Date:** circa 1892 (facsimile)  
**Primary Maker:** Edmond Johnson

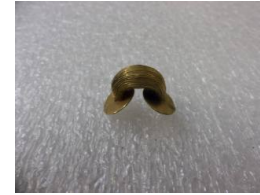




**Title: Gold Dress Fastener**  
**Date:** circa 1892 (facsimile)  
**Primary Maker:** Edmond Johnson



**Title: Gold Dress Fastener**  
**Date:** circa 1892 (facsimile)  
**Primary Maker:** Edmond Johnson



**Title: Gold Dress Fastener**  
**Date:** circa 1892 (facsimile)  
**Primary Maker:** Edmond Johnson



**Title: Gold Dress Fastener**  
**Date:** circa 1892 (facsimile)  
**Primary Maker:** Edmond Johnson



**Title: Gold Dress Fastener**  
**Date:** circa 1892 (facsimile)  
**Primary Maker:** Edmond Johnson



**Title: Gold Dress Fastener**  
**Date:** circa 1892 (facsimile)  
**Primary Maker:** Edmond Johnson



**Title: Gold Dress Fastener**  
**Date:** circa 1892 (facsimile)  
**Primary Maker:** Edmond Johnson



**Title: Spear Head**  
**Date:** n.d.  
**Medium:** Bronze



**Title: Gold Collar**  
**Date:** circa 1892 (facsimile)  
**Primary Maker:** Edmond Johnson



**Title: Gold Collar**  
**Date:** circa 1892 (facsimile)  
**Primary Maker:** Edmond Johnson



**Title: Gold Collar**  
**Date:** circa 1892 (facsimile)  
**Primary Maker:** Edmond Johnson



**Title: Gold Collar**  
**Date:** circa 1892 (facsimile)  
**Primary Maker:** Edmond Johnson



**Title: Gold Collar**  
**Date:** circa 1892 (facsimile)  
**Primary Maker:** Edmond Johnson



**Title: Gold Lunula**  
**Date:** circa 1892 (facsimile)  
**Primary Maker:** Edmond Johnson



**Title: Gold Lunula**  
**Date:** circa 1892 (facsimile)  
**Primary Maker:** Edmond Johnson



**Title: Brooch from Kilmainham (Knight Templars' Brooch)**  
**Date:** circa 1892 (facsimile)  
**Primary Maker:** Edmond Johnson



**Title: Three-Lobed Brooch**  
**Date:** circa 1892 (facsimile)  
**Primary Maker:** Edmond Johnson



**Title: Four-Lobed Brooch**  
**Date:** circa 1892 (facsimile)  
**Primary Maker:** Edmond Johnson

---

**Title: Strigil**

**Date:** circa 5th century B.C.E.

**Medium:** Bronze



**Title: Tortoise Brooch**

**Date:** circa 1892 (facsimile)

**Primary Maker:** Edmond Johnson



**Title: Tortoise Brooch**

**Date:** circa 1892 (facsimile)

**Primary Maker:** Edmond Johnson

---

**Title: Drinking Horn**

**Date:** circa 1892 (facsimile)

**Primary Maker:** Edmond Johnson

**Title: Bell of Armagh**

**Date:** circa 1892 (facsimile)

**Primary Maker:** Edmond Johnson

**Title: St. Patrick's Bell**

**Date:** circa 1891 - 1892  
(facsimile, after circa 5th -  
century or later original)

**Primary Maker:** Edmond Johnson



**Title: Vessel Fragment:**

**Foot of a Cista**

**Date:** n.d.

**Medium:** Bronze



**Title: Bronze Fibula**

**Date:** circa 1892 (facsimile)

**Primary Maker:** Edmond Johnson



**Title: Bronze Fibula**

**Date:** circa 1892 (facsimile)

**Primary Maker:** Edmond Johnson



**Title: Bronze Fibula**  
**Date:** circa 1892 (facsimile)  
**Primary Maker:** Edmond Johnson



**Title: Bronze Fibula**  
**Date:** circa 1892 (facsimile)  
**Primary Maker:** Edmond Johnson



**Title: Penannular Brooch**  
**Date:** circa 1892 (facsimile)  
**Primary Maker:** Edmond Johnson



**Title: Penannular Brooch**  
**Date:** circa 1892 (facsimile)  
**Primary Maker:** Edmond Johnson



**Title: Penannular Brooch**  
**Date:** circa 1892 (facsimile)  
**Primary Maker:** Edmond Johnson



**Title: Brooch**  
**Date:** circa 1892 (facsimile)  
**Primary Maker:** Edmond Johnson



**Title: Penannular Brooch**  
**Date:** circa 1892 (facsimile)  
**Primary Maker:** Edmond Johnson



**Title: Penannular Brooch**  
**Date:** circa 1892 (facsimile)  
**Primary Maker:** Edmond Johnson



**Title: Vessel Fragment:  
Foot of a Cista**  
**Date:** n.d.  
**Medium:** Bronze



**Title: Brooch**  
**Date:** circa 1892 (facsimile)  
**Primary Maker:** Edmond Johnson

**Title: Brooch**  
**Date:** circa 1892 (facsimile)  
**Primary Maker:** Edmond Johnson



**Title: Penannular Brooch**  
**Date:** circa 1892 (facsimile)  
**Primary Maker:** Edmond Johnson



**Title: Penannular Brooch**  
**Date:** circa 1892 (facsimile)  
**Primary Maker:** Edmond Johnson



**Title: Brooch from County Donegal**  
**Date:** circa 1892 (facsimile)  
**Primary Maker:** Edmond Johnson



**Title: Penannular Brooch**  
**Date:** circa 1892 (facsimile)  
**Primary Maker:** Edmond Johnson



**Title: Penannular Brooch**  
**Date:** circa 1892 (facsimile)  
**Primary Maker:** Edmond Johnson



**Title: Three-Lobed Brooch**  
**Date:** circa 1892 (facsimile)  
**Primary Maker:** Edmond Johnson



**Title: Penannular Brooch**  
**Date:** circa 1892 (facsimile)  
**Primary Maker:** Edmond Johnson





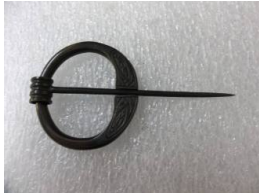
**Title: Penannular Brooch**  
**Date:** circa 1892 (facsimile)  
**Primary Maker:** Edmond Johnson



**Title: Flower**  
**Date:** n.d.  
**Medium:** Bronze



**Title: Penannular Brooch**  
**Date:** circa 1892 (facsimile)  
**Primary Maker:** Edmond Johnson



**Title: Penannular Brooch**  
**Date:** circa 1892 (facsimile)  
**Primary Maker:** Edmond Johnson



**Title: Pseudopenannular Brooch**  
**Date:** circa 1892 (facsimile)  
**Primary Maker:** Edmond Johnson



**Title: Penannular Brooch**  
**Date:** circa 1892 (facsimile)  
**Primary Maker:** Edmond Johnson



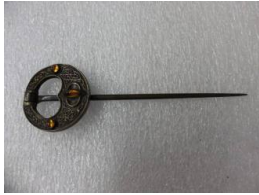
**Title: Penannular Brooch**  
**Date:** circa 1892 (facsimile)  
**Primary Maker:** Edmond Johnson



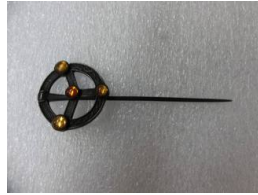
**Title: Penannular Brooch**  
**Date:** circa 1892 (facsimile)  
**Primary Maker:** Edmond Johnson



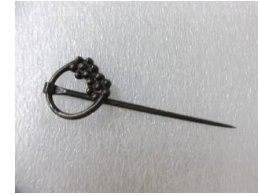
**Title: Ring Pin**  
**Date:** circa 1892 (facsimile)  
**Primary Maker:** Edmond Johnson



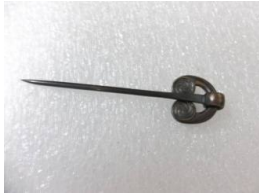
**Title: Ring Pin**  
**Date:** circa 1892 (facsimile)  
**Primary Maker:** Edmond Johnson



**Title: Penannular Brooch**  
**Date:** circa 1892 (facsimile)  
**Primary Maker:** Edmond Johnson



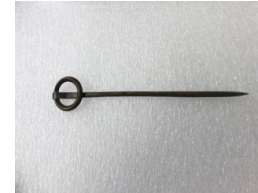
**Title: Ring Pin**  
**Date:** circa 1892 (facsimile)  
**Primary Maker:** Edmond Johnson



**Title: Ring Pin**  
**Date:** circa 1892 (facsimile)  
**Primary Maker:** Edmond Johnson



**Title: Penannular Brooch**  
**Date:** circa 1892 (facsimile)  
**Primary Maker:** Edmond Johnson



**Title: Ring Pin**  
**Date:** circa 1892 (facsimile)  
**Primary Maker:** Edmond Johnson



**Title: Ring Pin**  
**Date:** circa 1892 (facsimile)  
**Primary Maker:** Edmond Johnson



**Title: Ring Pin**  
**Date:** circa 1892 (facsimile)  
**Primary Maker:** Edmond Johnson



**Title: Ring Pin**  
**Date:** circa 1892 (facsimile)  
**Primary Maker:** Edmond Johnson



**Title: Bronze Fibula**  
**Date:** circa 1892 (facsimile)  
**Primary Maker:** Edmond Johnson



**Title: Bronze Object from County Antrim, Perhaps Part of a Brooch**  
**Date:** circa 1892 (facsimile)  
**Primary Maker:** Edmond Johnson



**Title: Bronze Disc, Incorrectly Restored as a Sunflower Pin**  
**Date:** circa 1892 (facsimile)  
**Primary Maker:** Edmond Johnson



**Title: Circular Boss, Incorrectly Restored as a Sunflower Pin**  
**Date:** circa 1892 (facsimile)  
**Primary Maker:** Edmond Johnson



**Title: Vessel Fragment: Handle Fragment**  
**Date:** n.d.  
**Medium:** Bronze

**Title: Sunflower Pin**  
**Date:** circa 1892 (facsimile)  
**Primary Maker:** Edmond Johnson



**Title: Hand Pin**  
**Date:** circa 1892 (facsimile)  
**Primary Maker:** Edmond Johnson



**Title: Hand Pin or Hammer-Headed Pin**  
**Date:** circa 1892 (facsimile)  
**Primary Maker:** Edmond Johnson



**Title: Hand Pin or Hammer-Headed Pin**  
**Date:** circa 1892 (facsimile)  
**Primary Maker:** Edmond Johnson





**Title: Hand Pin or Hammer-Headed Pin**  
**Date:** circa 1892 (facsimile)  
**Primary Maker:** Edmond Johnson



**Title: Hand Pin or Hammer-Headed Pin**  
**Date:** circa 1892 (facsimile)  
**Primary Maker:** Edmond Johnson



**Title: Hand Pin or Hammer-Headed Pin**  
**Date:** circa 1892 (facsimile)  
**Primary Maker:** Edmond Johnson



**Title: Hand Pin or Hammer-Headed Pin**  
**Date:** circa 1892 (facsimile)  
**Primary Maker:** Edmond Johnson



**Title: Hand Pin or Hammer-Headed Pin**  
**Date:** circa 1892 (facsimile)  
**Primary Maker:** Edmond Johnson



**Title: Bronze Pin**  
**Date:** circa 1892 (facsimile)  
**Primary Maker:** Edmond Johnson



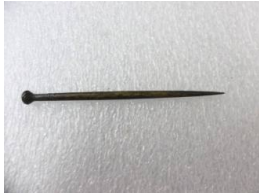
**Title: Bronze Pin**  
**Date:** circa 1892 (facsimile)  
**Primary Maker:** Edmond Johnson



**Title: Bronze Pin**  
**Date:** circa 1892 (facsimile)  
**Primary Maker:** Edmond Johnson



**Title: Bronze Pin**  
**Date:** circa 1892 (facsimile)  
**Primary Maker:** Edmond Johnson



**Title: Bronze Pin**  
**Date:** circa 1892 (facsimile)  
**Primary Maker:** Edmond Johnson



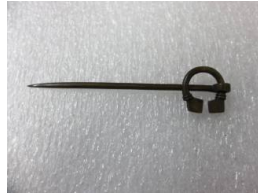
**Title: Bronze Pin**  
**Date:** circa 1892 (facsimile)  
**Primary Maker:** Edmond Johnson



**Title: Bronze Pin**  
**Date:** circa 1892 (facsimile)  
**Primary Maker:** Edmond Johnson



**Title: Small Reliquary**  
**Date:** circa 1892 (facsimile)  
**Primary Maker:** Edmond Johnson



**Title: Penannular Brooch**  
**Date:** circa 1892 (facsimile)  
**Primary Maker:** Edmond Johnson



**Title: Brooch from Dunshaughlin**  
**Date:** circa 1892 (facsimile)  
**Primary Maker:** Edmond Johnson



**Title: Penannular Brooch**  
**Date:** circa 1892 (facsimile)  
**Primary Maker:** Edmond Johnson



**Title: Hunterston Brooch**  
**Date:** circa 1892 (facsimile)  
**Primary Maker:** Edmond Johnson



**Title: Pseudopenannular Brooch**  
**Date:** circa 1892 (facsimile)  
**Primary Maker:** Edmond Johnson



**Title: Disk Ring, Silver**  
**Date:** circa 1892 (facsimile)  
**Primary Maker:** Edmond Johnson

**Title: Mether**  
**Date:** circa 1892 (facsimile)  
**Primary Maker:** Edmond Johnson  
**Medium:** Wood, brass collar at base



**Title: Vase Fragment: Handle with Head of a Satyr**  
**Date:** n.d.  
**Medium:** Bronze



**Title: Weight**  
**Date:** n.d.  
**Medium:** Bronze



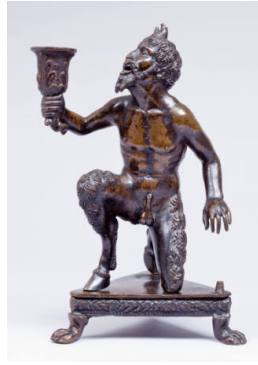
**Title: Top of a Thymiaterion**  
**Date:** 4th - 3rd century B.C.E.  
**Medium:** Bronze



**Title: Snuff Box**  
**Date:** circa 1725 - 1750  
**Primary Maker:** Unknown Artist  
**Medium:** Silver-gilt, mother-of-pearl



**Title:** Farnese Reliquary  
**Date:** circa 1550, with 17th - century and later? reworkings  
**Primary Maker:** Antonio Gentili (also called Antonio Gentili da Faenza)  
**Medium:** Cast silver gilt, lapis lazuli, rock crystal, enamel, and églomisé



**Title:** Candlestick and Inkwell (or Sandbox) Depicting a Kneeling Satyr  
**Date:** circa 1500 - 1509  
**Primary Maker:** Severo da Ravenna  
**Medium:** Cast bronze

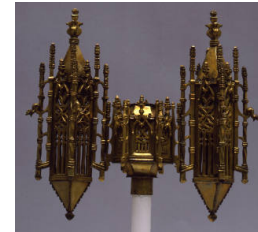


**Title:** Silver Chocolate Pot  
**Date:** 1790  
**Primary Maker:** Samuel Howland  
**Medium:** Silver with Ivory handle

**Title:** Lamp Holder (?)  
**Date:** n.d.  
**Medium:** Unidentified metal



**Title:** Sarcophagus Fragment with Imperial Portrait Medallions (of Marcus Aurelius)  
**Date:** 2nd century  
**Medium:** Lead



**Title:** Section from a Reliquary  
**Date:** 15th century  
**Primary Maker:** Unknown Artist  
**Medium:** Cast, cut and twisted gilt bronze



**Title:** Ladle  
**Date:** circa 1800  
**Primary Maker:** Joel Sayre  
**Medium:** Silver



**Title:** Tongs  
**Date:** circa 1800 - 1810  
**Primary Maker:** Unknown Artist  
**Medium:** Silver, rosettes on nippers



**Title:** Head of a Saint  
**Date:** 11th century  
**Medium:** Cloisonné enamel and gold



**Title: Spoon**

**Date:** circa mid- 19th century

**Primary Maker:** Jehu & W.L. Ward

**Medium:** Silver



**Title: Ardagh Chalice**

**Date:** circa 1891 - 1892  
(facsimile, after 8th - century original)

**Primary Maker:** Edmond Johnson

**Medium:** Wrought and cast silver with gilt, enamel, and colored glass decoration



**Title: Vase**

**Date:** circa 1930

**Primary Maker:** Camille Fauré

**Medium:** Enameled and silvered beaten copper



**Title: The Primrose (La Primvère) (after Alphonse Mucha)**

**Date:** circa 1900

**Primary Maker:** Unknown Artist

**Medium:** Cast bronze plaque with gilt and polychrome decoration

**Title: Planter**

**Date:** circa 1900

**Primary Maker:** Glasfabrik Joh. Loetz Witwe Klostermühle

**Medium:** Cast bronze, blown and trailed colored glass



**Title: Vase**

**Date:** circa 1918 - 1920

**Primary Maker:** Josef Hoffmann

**Medium:** Hand-wrought brass



---

**Title: Candlestick**

**Date:** base 18th century,  
nozzle 19th century

**Primary Maker:** Unknown  
Artist

**Medium:** Cast brass with  
stamped decoration

---

**Title: Alms Basin**

**Date:** 16th century

**Primary Maker:** Unknown  
Artist

**Medium:** Hammered brass  
with stamped decoration



---

**Title: Inkwell: Putto on a Dolphin**

**Date:** circa 1650 - 1675

**Medium:** Cast bronze

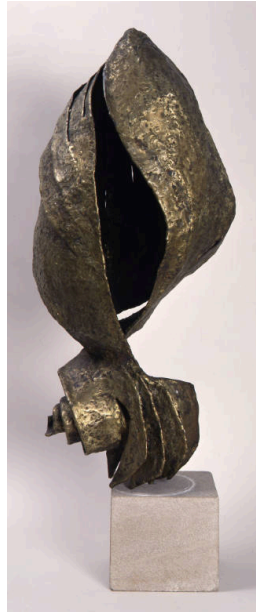


---

**Title: The Dead Christ  
Attended by Angels**

**Date:** circa 1525 - 1550

**Medium:** Cast silver-gilt  
bronze plaque



---

**Title: Carnivorous Flower**

**Date:** 1953?

**Primary Maker:** Seymour  
Lipton

**Medium:** Welded nickel-silver  
on steel



---

**Title: Louis-Philippe 1  
and Marie-Amelie, King  
and Queen of France**

**Date:** circa 1832

**Primary Maker:** Jean-Auguste  
Barre

**Medium:** Cast bronze  
medallion



**Title:** Sigismondo Pandolfo Malatesta (1417-1468), Lord of Rimini (1432-1463)  
**Date:** 1446  
**Primary Maker:** Matteo de' Pasti  
**Medium:** Cast bronze medallion



**Title:** Tsuba (Relief of Mountain, Incised Waterfall and Stream)  
**Date:** 18th - 19th century  
**Medium:** Bronze with gilt



**Title:** Tsuba (Decorative Openwork Design)  
**Date:** 18th - 19th century  
**Medium:** Bronze



**Title:** Tsuba (Relief on Monkey in Tree)  
**Date:** 18th - 19th century  
**Medium:** Bronze with copper



**Title:** Tsuba (Decorative Openwork Design)  
**Date:** 18th - 19th century  
**Medium:** Bronze



**Title:** Tsuba (Openwork Flower Design)  
**Date:** 18th - 19th century  
**Medium:** Bronze



**Title:** Tsuba (Relief of Two Figures in Landscape)  
**Date:** 18th - 19th century  
**Medium:** Bronze with copper gilt



**Title:** Tsuba (Relief of Sitting Monkey)  
**Date:** 18th - 19th century  
**Medium:** Bronze with copper and gilt



**Title:** Tsuba (Scalloped Edge)  
**Date:** 18th - 19th century  
**Medium:** Bronze

---

**Title: Sugar Shaker**

**Date:** circa 1750

**Primary Maker:** Unknown

Artist

**Medium:** Brass

**Title: Pair of  
Candlesticks**

**Date:** circa 1750

**Primary Maker:** Unknown

Artist

**Medium:** Brass

**Title: Inkwell**

**Date:** 1829

**Primary Maker:** Unknown

Artist

**Medium:** Pewter

---

**Title: Sugar Tongs**

**Date:** 1799 - 1800

**Primary Maker:** Unknown

Artist

**Medium:** Silver



**Title: Table Spoon**

**Date:** circa 1785 - 1790

**Primary Maker:** Unknown

Artist

**Medium:** Silver

**Title: Pair of  
Candlesticks with  
Matching Snuffer on  
Stand**

**Date:** circa 1750 - 1770

**Medium:** Brass

---

**Title: Four Blotter  
Corners, in Viking  
Pattern**

**Date:** 1920s

**Primary Maker:** Marshall Field  
and Company Craft Shop

**Medium:** Bronze

**Title: Commemorative  
Medallion, 1 of 77 in  
Wooden Chest with  
Drawers**

**Date:** n.d.

**Title: Liberty**

**Date:** 1907

**Primary Maker:** Augustus  
Saint-Gaudens

**Medium:** Commemorative  
medallion





**Title: Compote**  
**Date:** circa 1925  
**Primary Maker:** Georg Jensen  
**Medium:** Cast and hammered sterling silver



**Title: Knife**  
**Date:** circa 12th century B.C.E.  
**Medium:** Cast bronze



**Title: Horse Trappings for a Chariot, Pair of Bosses (for Harness Decoration)**  
**Date:** circa 12th century B.C.E.  
**Medium:** Cast bronze



**Title: Pectoral Reliquary Cross**  
**Date:** 9th - 12th century  
**Medium:** Cast copper (or high copper-content bronze) with incised decoration



**Title: Half of a Pectoral Reliquary Cross: Saint John the Evangelist**  
**Date:** 9th - 12th century  
**Medium:** Cast bronze with incised decoration

**Title: Pendant Cross**  
**Date:** 16th - 17th century?  
**Medium:** Bronze or brass (?)

**Title: Oil Lamp Fragment: Cross**  
**Date:** 4th - 5th century  
**Medium:** Bronze

**Title: Pendant Cross**  
**Date:** 6th century  
**Medium:** Bronze

**Title: Pendant Cross**  
**Date:** 12th - 14th century  
**Medium:** Bronze

**Title: Pendant Cross**

**Date:** 14th - 18th century

**Medium:** Bronze



**Title: Belt Buckle (with a Cross)**

**Date:** 6th century

**Medium:** Cast bronze



**Title: Belt Buckle (in the Shape of a Cross)**

**Date:** 6th century

**Medium:** Cast bronze



**Title: Holy Rider Amulet**

**Date:** 4th - 7th century

**Medium:** Incised bronze



**Title: Holy Rider Amulet**

**Date:** 4th - 7th century?

**Medium:** Incised bronze



**Title: Ring (with Incised Cross)**

**Date:** 6th - 8th century?

**Medium:** Bronze



**Title: Pendant:  
Unidentified Miracle of  
Archangel Michael**

**Date:** 12th century

**Medium:** Cast bronze with  
traces of enamel



**Title: Pendant: Mary  
Intercessor at Last  
Judgment?**

**Date:** 16th - 18th century

**Medium:** Bronze



**Title: Pendant: Trinity  
(after Rublyov icon)**

**Date:** 16th - 18th century

**Primary Maker:** Unknown  
Artist

**Medium:** Bronze



**Title: Buddhist Temple Bell**

**Date:** late 19th century

**Medium:** Cast bronze

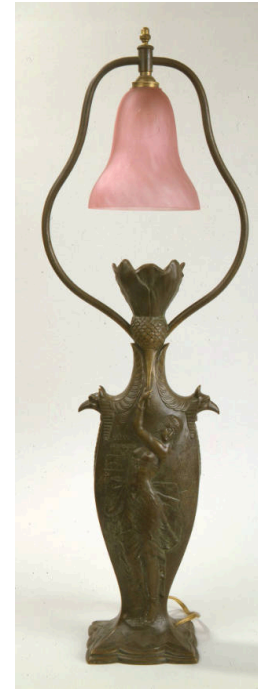


**Title: Spoon**

**Date:** circa 1910

**Primary Maker:** Kalo Shop

**Medium:** Wrought silver with semiprecious cabachon



**Title: Lamp**

**Date:** circa 1900 - 1920

**Primary Maker:** Unknown

Artist

**Medium:** Patinated cast bronze with frosted pink glass shade

**Title: Earring**

**Date:** n.d.

**Medium:** Bent bronze rod, plated with gold

**Title: Door Boss or Cymbal**

**Date:** n.d.

**Medium:** Cast bronze

**Title: Vessel Fragment: Wall and Rim of a Bowl**

**Date:** n.d.

**Medium:** Hammered bronze with incised inscription



**Title: Frog**  
**Date:** n.d.  
**Medium:** Bronze

**Title: Lid (?)**  
**Date:** n.d.  
**Medium:** Bronze with traces of wood

**Title: Disc**  
**Date:** n.d.  
**Medium:** Bronze



**Title: Biscuit Barrel**  
**Date:** circa 1903  
**Primary Maker:** Archibald Knox  
**Medium:** Cast pewter with enamel inlay

**Title: Disc with Raised Center**  
**Date:** n.d.  
**Medium:** Bronze

**Title: Ring with "Hooks"**  
**Date:** n.d.  
**Medium:** Bronze



**Title: Clock**  
**Date:** circa 1902 - 1905  
**Primary Maker:** Archibald Knox  
**Medium:** Pewter with mother-of-pearl inlay, copper hands, and original winding key

**Title: Tea Water Kettle**  
**Date:** circa 1905  
**Primary Maker:** Frank Bruder  
**Medium:** Hand-wrought silver and carved ivory



**Title: Tea Pot**  
**Date:** circa 1905  
**Primary Maker:** Frank Bruder  
**Medium:** Hammered silver and carved ivory



**Title: Quaich**

**Date:** 1884

**Primary Maker:** William Mackie

**Medium:** Wrought silver with gold, enamel, and semi-precious stone decoration

**Title: Candlestick with Globe**

**Date:** circa 1905

**Primary Maker:** Tiffany Studios

**Medium:** Patinated cast bronze and blown Favrile glass shade



**Title: Candlestick with Globe**

**Date:** circa 1905

**Primary Maker:** Tiffany Studios

**Medium:** Patinated cast bronze and blown Favrile glass shade

**Title: Stamp Box ("Zodiac" pattern)**

**Date:** circa 1902

**Primary Maker:** Tiffany Studios

**Medium:** Gilt cast bronze with cold-painted decoration

**Title: Blotter Edge ("Zodiac" pattern)**

**Date:** circa 1902

**Primary Maker:** Tiffany Studios

**Medium:** Gilt cast bronze with cold-painted decoration

**Title: Blotter Edge ("Zodiac" pattern)**

**Date:** circa 1902

**Primary Maker:** Tiffany Studios

**Medium:** Gilt cast bronze with cold-painted decoration

**Title: Garment Clasp (thistle pattern)**

**Date:** circa 1900

**Primary Maker:** Unknown Artist

**Medium:** Cast silver



**Title: Mirror**

**Date:** circa 1900

**Primary Maker:** Liberty & Co., Ltd., London

**Medium:** Beaten copper over wood, enamel (blue) appliqué, and mirror



**Title: Sugar Bowl and Shovel**

**Date:** circa 1880

**Primary Maker:** Christopher Dresser

**Medium:** Silver-plate with engraved decoration and ebony handles



**Title: Covered Bowl**  
**Date:** circa mid- 1930s  
**Primary Maker:** Hayno Focken  
**Medium:** Hammered brass  
with engraved decoration



**Title: Tudric Bowl**  
**Date:** n.d.  
**Primary Maker:** Archibald  
Knox  
**Medium:** Pewter



**Title: Tudric Bowl**  
**Date:** n.d.  
**Primary Maker:** Archibald  
Knox  
**Medium:** Pewter

**Title: Tea Pot**  
**Date:** circa 1930  
**Primary Maker:** Bernard  
Rice's Sons, Inc.  
**Medium:** Silver-plated metal  
with raffia wrapped handle



**Title: Desk Box**  
**Date:** circa 1906  
**Primary Maker:** Tiffany Studios  
**Medium:** Gilt bronze with cold  
painted decoration



**Title: Tray**  
**Date:** late 19th - early 20th  
century  
**Primary Maker:** Unknown  
Artist  
**Medium:** Hammered metal

**Title: Planter**  
**Date:** n.d.  
**Primary Maker:** Philippe-  
Laurent Roland  
**Medium:** Cast bronze with  
pink marble and gilt bronze

**Title: Inkwell ("Pine  
Needle" pattern)**  
**Date:** circa 1902  
**Primary Maker:** Tiffany Studios  
**Medium:** Gilt cast bronze and  
stained (onyx) glass

**Title: Inkwell ("Pine  
Needle" pattern)**  
**Date:** circa 1902  
**Primary Maker:** Tiffany Studios  
**Medium:** Gilt cast bronze and  
stained (onyx) glass



**Title: Inkwell ("Pine Needle" pattern)**

**Date:** circa 1902

**Primary Maker:** Tiffany Studios

**Medium:** Gilt cast bronze and stained (onyx) glass



**Title: Lough Erne Shrine**

**Date:** circa 1892 (facsimile)

**Primary Maker:** Edmond Johnson



**Title: Covered Tazza**

**Date:** circa 1500

**Primary Maker:** Unknown Artist

**Medium:** Enamel on metal (?)

**Title: Triptych: The Deisis (Intercession at the Last Judgement)**

**Date:** possibly 17th though 19th century

**Primary Maker:** Unknown Artist

**Medium:** Brass (or bronze) with blue enamel



**Title: Book Cover: Crucifixion**

**Date:** 1700 - 1750

**Primary Maker:** Unknown Artist

**Medium:** Silver repousse



**Title: Tray with Two Women**

**Date:** n.d.

**Primary Maker:** James W. Tufts

**Medium:** Silver



**Title: Tray**

**Date:** late 19th - early 20th century

**Primary Maker:** J.P. Kayser & Sohn

**Medium:** Cast pewter



**Title: Calling Card Tray with Wheat Motif**

**Date:** late 19th - early 20th century

**Primary Maker:** J.P. Kayser & Sohn

**Medium:** Cast pewter



**Title: Tray with Fish Motif**

**Date:** late 19th - early 20th century

**Primary Maker:** J.P. Kayser & Sohn

**Medium:** Cast pewter



**Title: Desk Box**  
**Date:** circa 1906  
**Primary Maker:** Tiffany Studios  
**Medium:** Gilt bronze with cold painted decoration



**Title: Letter Holder**  
**Date:** circa 1902  
**Primary Maker:** Tiffany Studios  
**Medium:** Gilt bronze with onyx stained glass



**Title: Cigarette Box**  
**Date:** circa 1902  
**Primary Maker:** Tiffany Studios  
**Medium:** Gilt bronze with onyx stained glass



**Title: Water Dropper**  
**Date:** n.d.  
**Medium:** Wrought brass and copper



**Title: Water Dropper**  
**Date:** n.d.  
**Medium:** Wrought silver



**Title: Water Dropper**  
**Date:** n.d.  
**Medium:** Wrought gilt copper



**Title: Water Dropper**  
**Date:** n.d.  
**Medium:** Wrought copper

**Title: Tea Service: Tea Pot with Lid**  
**Date:** circa 1920  
**Primary Maker:** Unknown Artist  
**Medium:** Wrought copper, brass and wood

**Title: Tea Service: Water Kettle with Lid**  
**Date:** circa 1920  
**Primary Maker:** Unknown Artist  
**Medium:** Wrought copper, brass and wood



**Title: Tea Service:  
Creamer**

**Date:** circa 1920

**Primary Maker:** Unknown  
Artist

**Medium:** Wrought copper and  
brass

**Title: Tea Service: Sugar  
Bowl**

**Date:** circa 1920

**Primary Maker:** Unknown  
Artist

**Medium:** Wrought copper and  
brass



**Title: Tea Service: Tea  
Infuser (Pot)**

**Date:** 1924 (design,  
manufactured at the Bauhaus  
between 1924 and 1929)

**Primary Maker:** Marianne  
Brandt

**Medium:** Hand-wrought  
sterling silver and ebony

**Title: Tea Service:  
Creamer**

**Date:** 1924 (design,  
manufactured at the Weimar  
Bauhaus in 1924 or 1925 or at  
the Dessau

**Primary Maker:** Marianne  
Brandt

**Medium:** Hand-wrought  
sterling silver and ebony  
(replacement handle)

**Title: Tea Service: Sugar  
Bowl**

**Date:** 1924 (design,  
manufactured at the Weimar  
Bauhaus in 1924 or 1925 or at  
the Dessau

**Primary Maker:** Marianne  
Brandt

**Medium:** Hand-wrought  
sterling silver

**Title: Tea Service: Tray**

**Date:** 1924 (design,  
manufactured at the Weimar  
Bauhaus in 1924 or 1925 or at  
the Dessau

**Primary Maker:** Marianne  
Brandt

**Medium:** Hand-wrought  
sterling silver

**Title: Elevator Enclosure  
Screen**

**Date:** circa 1894

**Primary Maker:** Louis H.  
Sullivan

**Medium:** Painted cast and  
wrought iron



**Title: Spoon**

**Date:** circa 1903 - 1904

**Primary Maker:** Charles  
Rennie Mackintosh

**Medium:** Silver electroplate



**Title: Fish Knife**

**Date:** circa 1903 - 1904

**Primary Maker:** Charles  
Rennie Mackintosh

**Medium:** Silver electroplate



**Title: Fork**  
**Date:** circa 1903 - 1904  
**Primary Maker:** Charles Rennie Mackintosh  
**Medium:** Silver electroplate



**Title: Spoon**  
**Date:** circa 1903 - 1904  
**Primary Maker:** Charles Rennie Mackintosh  
**Medium:** Silver electroplate



**Title: Spoon**  
**Date:** circa 1903 - 1904  
**Primary Maker:** Charles Rennie Mackintosh  
**Medium:** Silver electroplate



**Title: Fork**  
**Date:** circa 1903 - 1904  
**Primary Maker:** Charles Rennie Mackintosh  
**Medium:** Silver electroplate

**Title: Surtout (basket decorated with garlands and grapes)**  
**Date:** n.d.  
**Primary Maker:** Pierre-Philippe Thomire  
**Medium:** Gilt cast bronze

**Title: Candlestick Collar**  
**Date:** 1900 - 1905  
**Primary Maker:** Archibald Knox  
**Medium:** Cast and wrought pewter



**Title: Bookend**  
**Date:** circa 1906  
**Primary Maker:** Tiffany Studios  
**Medium:** Gilt bronze with cold painted decoration



**Title: Bookend**  
**Date:** circa 1906  
**Primary Maker:** Tiffany Studios  
**Medium:** Gilt bronze with cold painted decoration

**Title: Tea Service**  
**Date:** circa 1920  
**Primary Maker:** Unknown Artist  
**Medium:** Wrought copper, brass and wood



**Title: Five-Piece Tea Service: Tea Pot**  
**Date:** circa 1902 - 1904  
**Primary Maker:** Gerhardt & Co.  
**Medium:** Hand-wrought silver



**Title: Five-Piece Tea Service: Coffee Pot**  
**Date:** circa 1902 - 1904  
**Primary Maker:** Gerhardt & Co.  
**Medium:** Hand-wrought silver



**Title: Five-Piece Tea Service: Creamer**  
**Date:** circa 1902 - 1904  
**Primary Maker:** Gerhardt & Co.  
**Medium:** Hand-wrought silver



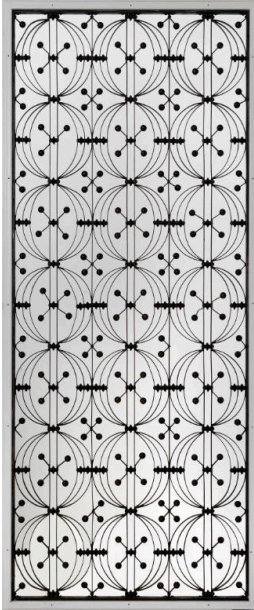
**Title: Five-Piece Tea Service: Sugar Bowl**  
**Date:** circa 1902 - 1904  
**Primary Maker:** Gerhardt & Co.  
**Medium:** Hand-wrought silver



**Title: Five-Piece Tea Service: Tray**  
**Date:** circa 1902 - 1904  
**Primary Maker:** Gerhardt & Co.  
**Medium:** Hand-wrought silver



**Title: Tea Service: Tea Infuser (Pot), Creamer, Sugar Bowl, and Tray**  
**Date:** 1924 (design, manufactured at the Weimar Bauhaus in 1924 or 1925 or at the Dessau)  
**Primary Maker:** Marianne Brandt  
**Medium:** Hand-wrought sterling silver (tea infuser and creamer also with ebony)

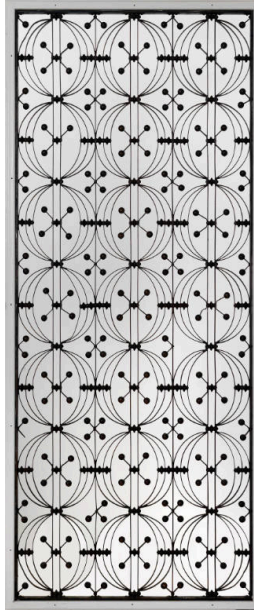


**Title: Elevator Enclosure Screen**

**Date:** circa 1894

**Primary Maker:** Louis H. Sullivan

**Medium:** Painted cast and wrought iron



**Title: Elevator Enclosure Screen**

**Date:** circa 1894

**Primary Maker:** Louis H. Sullivan

**Medium:** Painted cast and wrought iron



**Title: Cutlery**

**Date:** circa 1903 - 1904

**Primary Maker:** Charles Rennie Mackintosh

**Medium:** Silver electroplate



**Title: Table Centerpiece (Surtout de table): Two Dancing Maidens and a Youth**

**Date:** n.d.

**Primary Maker:** Pierre-Philippe Thomire

**Medium:** Gilt cast bronze

**Title: Candlestick**

**Date:** 1900 - 1905

**Primary Maker:** Archibald Knox

**Medium:** Cast and wrought pewter



**Title: Five-Piece Tea Service**

**Date:** circa 1902 - 1904

**Primary Maker:** Gerhardt & Co.

**Medium:** Hand-wrought silver



**Title: Set of Bookends**  
**Date:** circa 1906  
**Primary Maker:** Tiffany Studios  
**Medium:** Gilt bronze with cold painted decoration

**Title: Baluster**  
**Date:** circa 1899 - 1901 or 1903 - 1904  
**Primary Maker:** George Grant Elmslie  
**Medium:** Bronze-plated and painted cast iron

**Title: Baluster**  
**Date:** circa 1899 - 1901 or 1903 - 1904  
**Primary Maker:** George Grant Elmslie  
**Medium:** Painted cast iron

**Title: Baluster**  
**Date:** circa 1899 - 1901 or 1903 - 1904  
**Primary Maker:** George Grant Elmslie  
**Medium:** Painted cast iron

**Title: Baluster**  
**Date:** circa 1899 - 1901 or 1903 - 1904  
**Primary Maker:** George Grant Elmslie  
**Medium:** Painted cast iron



**Title: Candlestick**  
**Date:** circa 1900  
**Primary Maker:** Tiffany Studios  
**Medium:** Bronze



**Title: Mirror (Kagami)**  
**Date:** late 14th - early 15th century  
**Primary Maker:** Unknown Artist  
**Medium:** Cast bronze



**Title: Ding (T'ing) (Ritual Cooking Vessel)**  
**Date:** 14th - 13th century B.C. E.  
**Medium:** Cast bronze



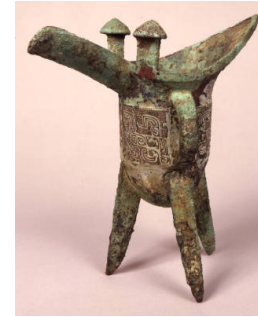
**Title: Hand Warmer**  
**Date:** late 19th or early 20th century  
**Primary Maker:** Unknown Artist  
**Medium:** Hammered and pierced brass



**Title: Cup and Saucer**  
**Date:** 1904  
**Primary Maker:** Yeoung Najun  
**Medium:** Hammered silver with enamel decoration



**Title: Ding (T'ing) (Ritual Cooking Vessel)**  
**Date:** 13th - 12th century B.C. E.  
**Medium:** Cast bronze



**Title: Jue (Chueh) (Ritual Wine Vessel)**  
**Date:** late 13th - early 12th century B.C.E.  
**Medium:** Cast bronze



**Title: Gu (Ku) (Ritual Wine Beaker)**  
**Date:** late 13th - early 12th century B.C.E.  
**Medium:** Cast bronze

**Title: Gu (Ku) (Wine Beaker)**  
**Date:** late 13th - 12th century B.C.E.  
**Medium:** Cast bronze

**Title: Ge (Ke) (Socketed Dagger-Axe)**  
**Date:** circa 12th century B.C.E.  
**Medium:** Cast bronze



**Title: Ge (Socketed Dagger-Axe)**  
**Date:** circa 12th century B.C.E.  
**Medium:** Cast bronze

**Title: Ge (Dagger-Axe)**  
**Date:** circa 12th century B.C.E.  
**Medium:** Cast bronze



**Title: Ge (Dagger-Axe)**  
**Date:** circa 12th century B.C.E.  
**Medium:** Cast bronze



---

**Title: Ge (Dagger-Axe)**

**Date:** circa 12th century B.C.E.

**Medium:** Cast bronze

---

**Title: Ge (Dagger-Axe)**

**Date:** circa 12th century B.C.E.

**Medium:** Cast bronze



---

**Title: Ge (Dagger-Axe)**

**Date:** circa 12th century B.C.E.

**Medium:** Cast bronze



---

**Title: Socketed Axe Head**

**Date:** circa 12th century B.C.E.

**Medium:** Cast bronze

---

**Title: Knife**

**Date:** circa 12th century B.C.E.

**Medium:** Cast bronze



---

**Title: Spearhead**

**Date:** circa 12th century B.C.E.

**Medium:** Cast bronze



---

**Title: Arrowhead**

**Date:** circa early first millenium

**Medium:** Cast bronze



---

**Title: Arrowhead**

**Date:** circa first millenium

**Medium:** Bronze



---

**Title: Arrowhead**

**Date:** circa early first millenium

**Medium:** Bronze



**Title: Tun (T'un), Ferrule**  
**Date:** circa 770 - 265 B.C.E.  
**Medium:** Cast bronze



**Title: Horse Trappings for a Chariot, Two-Part Bit (Snaffle)**  
**Date:** circa 12th century B.C.E.  
**Medium:** Cast bronze



**Title: Horse Trappings for a Chariot, Cheek-piece (for a Snaffle)**  
**Date:** circa 12th century B.C.E.  
**Medium:** Cast bronze



**Title: Horse Trappings for a Chariot, Cross-Tube (for Harness Decoration)**  
**Date:** circa 12th century B.C.E.  
**Medium:** Cast bronze

**Title: Horse Trappings for a Chariot, Cross-Tube (for Harness Decoration)**  
**Date:** circa 12th century B.C.E.  
**Medium:** Cast bronze



**Title: Horse Trapping for a Chariot, Boss (for Harness Decoration)**  
**Date:** circa 12th century B.C.E.  
**Medium:** Cast bronze



**Title: Luan (chariot jingle)**  
**Date:** circa 5th - 1st century B.C.E.  
**Medium:** Cast bronze



**Title: Mirror with Lion and Grapevine Motif**  
**Date:** 618 - 907  
**Medium:** Cast bronze



**Title: Vase**  
**Date:** 19th century (possibly late)  
**Medium:** Cast bronze



**Title: Oil Lamp**  
**Date:** 4th - 5th century  
**Medium:** Cast bronze



**Title: Pectoral Reliquary Cross: The Crucifixion and The Virgin**  
**Date:** 9th - 12th century  
**Medium:** Cast bronze or brass



**Title: Half of a Pectoral Reliquary Cross; The Virgin**  
**Date:** 9th - 12th century  
**Medium:** Cast bronze with incised decoration



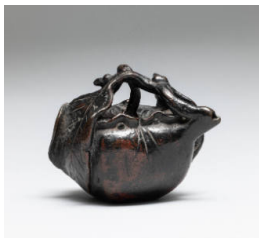
**Title: Bow Fibula**  
**Date:** 3rd - 4th century  
**Medium:** Gilt bronze



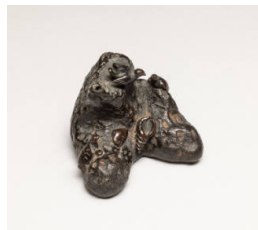
**Title: Disc (Omphalos) Fibula**  
**Date:** 4th - 5th century  
**Medium:** Bronze



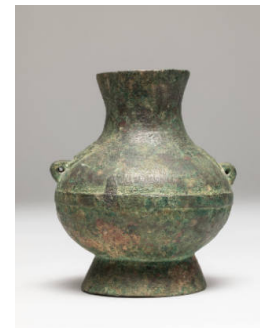
**Title: Rabbit-Shaped Water Dropper**  
**Date:** 17th - 18th century  
**Medium:** Cast bronze



**Title: Water Dropper in the Shape of a Peach with Leaves**  
**Date:** 17th - 18th century  
**Medium:** Cast bronze



**Title: Water Dropper in the Shape of a Rock with Birds and Shells**  
**Date:** 17th - 18th century  
**Medium:** Cast bronze



**Title: Hu Vase**  
**Date:** circa 1st century B.C.E.  
**Medium:** Cast bronze

**Title: Keman (Altar Pendant)**

**Date:** 1st half of 19th century

**Medium:** Gilt bronze

**Title: Keman (Altar Pendant)**

**Date:** 1st half of 19th century

**Medium:** Gilt bronze



**Title: Guimou Garment Hook**

**Date:** circa 4th - 3rd century B. C.E.

**Medium:** Cast bronze with silver and gold (?) inlay

**Title: Fang Hu Square Vase**

**Date:** circa 2nd century B.C.E.

**Medium:** Cast bronze with gold plating

**Title: Fang Hu Square Vase**

**Date:** 17th - 18th century?

**Medium:** Cast bronze



**Title: Ding Tripod with Lid**

**Date:** circa late 6th - early 5th century B.C.E.

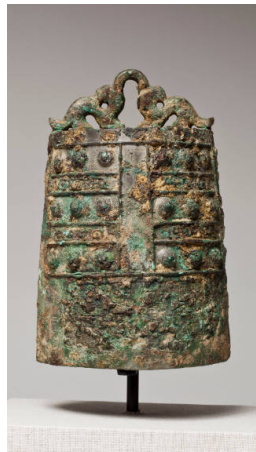
**Medium:** Cast bronze



**Title: Mirror with Decoration of Birds and Mythic Beasts**

**Date:** 206 B.C.E. - 220 C.E.

**Medium:** Cast bronze



**Title: Niuzhong Chime Bell**

**Date:** circa 6th century B.C.E.

**Medium:** Mold-cast bronze



**Title: Mirror**

**Date:** n. d.

**Primary Maker:** Unknown Artist

**Medium:** Bronze