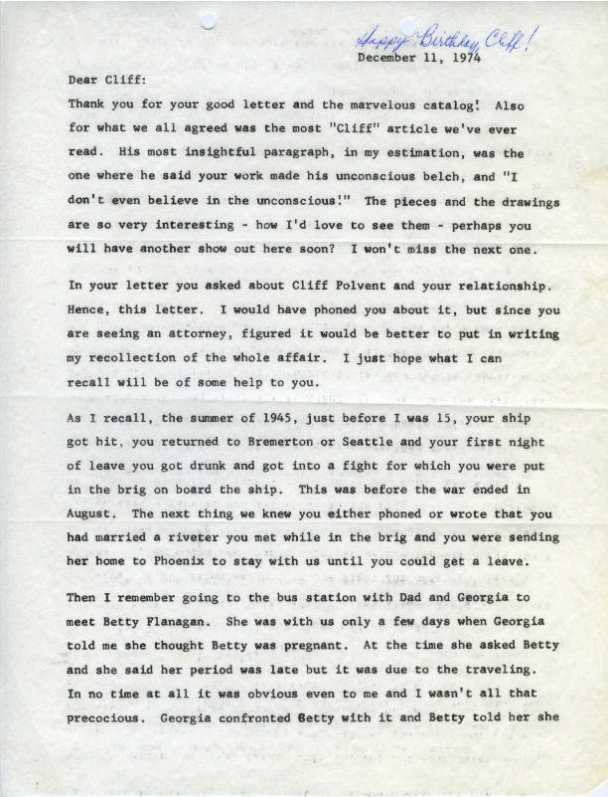


# Basic Detail Report



## letter

### Date

December 11, 1974

### Primary Maker

H. C. (Horace Clifford) Westermann

### Medium

Typewritten letter

### Description

Is responding to HCW's letter about his relationship to Clifford Polvent. The letter details her memory of the events in 1945 when HCW married Betty Flanagan. HCW sent Betty to stay with his family in Arizona until he was discharged. During her stay, it was discovered that she was at least 2 months pregnant. When confronted with this information, Betty confessed that she had been raped by two men when she was on her way out to the West Coast from her home in New Jersey. Martha feels that Polvent couldn't be HCW's son since his ship had only been in dock for a month and Betty was "farther along" (later in pregnancy) than that.

### Dimensions

a-c: letter: 11 x 8 1/2 in. (27.9 x 21.6 cm)