

# Basic Report

---



**Title: The False Image**

**Date:** 1968

**Primary Maker:** Roger Brown

**Medium:** Offset lithograph commercially printed on coated wove paper, based on two exquisite corpse drawings made for the purpose by the four artists

**Title: False Image**

**Date:** 1969

**Primary Maker:** Eleanor Dube

**Medium:** Offset lithograph commercially printed on white wove paper, based on an original drawing made for the purpose by the four artists

**Title: The False Image**

**Date:** 1968

**Primary Maker:** Eleanor Dube

**Medium:** Offset lithograph commercially printed on coated wove paper, based on two exquisite corpse drawings made for the purpose by the four artists



**Title: False Image Decal**

**Date:** 1969

**Primary Maker:** Eleanor Dube

**Medium:** Color silkscreen decals (black, blue, red) on off-white paper with blue-green recto commercially manufactured, based on original drawings made for the purpose by Roger Brown, Eleanor Dube, Philip Hanson and Christina Ramberg; for which the stencils were cut by Roger Brown and then transferred to screens for printing by the Chicago Decal Company; four separate sheets (one by each artist) enclosed in a commercial white envelope with a window opening and printed text (black silkscreen) designed and executed by the artists



**Title: False Image Decal**

**Date:** 1969

**Primary Maker:** Eleanor Dube

**Medium:** Color silkscreen decals (black, blue, red) on off-white paper with blue-green recto commercially manufactured, based on original drawings made for the purpose by Roger Brown, Eleanor Dube, Philip Hanson and Christina Ramberg; for which the stencils were cut by Roger Brown and then transferred to screens for printing by the Chicago Decal Company; four separate sheets (one by each artist). No envelope was included with this set.

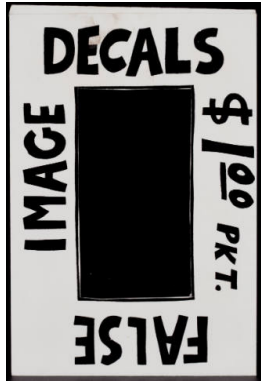


**Title: False Image Decal**

**Date:** 1969

**Primary Maker:** Eleanor Dube

**Medium:** Color silkscreen decals (black, blue, red) on off-white paper with blue-green recto commercially manufactured, based on original drawings made for the purpose by Roger Brown, Eleanor Dube, Philip Hanson and Christina Ramberg; for which the stencils were cut by Roger Brown and then transferred to screens for printing by the Chicago Decal Company; four separate sheets (one by each artist) enclosed in a commercial white envelope with a window opening and printed text (black silkscreen) designed and executed by the artists



**Title: False Image Decal Envelope**

**Date:** 1969

**Primary Maker:** Philip Hanson

**Medium:** Envelope for color silkscreen decals (black, blue, red) on off-white paper with blue-green recto commercially manufactured, based on original drawings made for the purpose by Roger Brown, Eleanor Dube, Philip Hanson and Christina Ramberg; for which the stencils were cut by Roger Brown and then transferred to screens for printing by the Chicago Decal Company; four separate sheets (one by each artist) enclosed in a commercial white envelope with a window opening and printed text (black silkscreen) designed and executed by the artists



**Title: False Image Decal Envelope**

**Date:** 1969

**Primary Maker:** Christina Ramberg

**Medium:** Color silkscreen decals (black, blue, red) on off-white paper with blue-green recto commercially manufactured, based on original drawings made for the purpose by Roger Brown, Eleanor Dube, Philip Hanson and Christina Ramberg; for which the stencils were cut by Roger Brown and then transferred to screens for printing by the Chicago Decal Company; four separate sheets (one by each artist) enclosed in a commercial white envelope with a window opening and printed text (black silkscreen) designed and executed by the artists

**Title: False Image Decals**

**Date:** 1969

**Primary Maker:** Roger Brown

**Medium:** Four separate sheets of color silkscreen decals (black, blue, red) on off-white paper with blue-green recto commercially manufactured and envelope. Based on original drawings made for the purpose by Roger Brown, Eleanor Dube, Philip Hanson and Christina Ramberg; for which the stencils were cut by Roger Brown and then transferred to screens for printing by the Chicago Decal Company; four separate sheets (one by each artist) enclosed in a commercial white envelope with a window opening and printed text (black silkscreen) designed and executed by the artists



### Title: False Image Decals

**Date:** 1969

**Primary Maker:** Roger Brown

**Medium:** Color silkscreen decals (black, blue, red) on off-white paper with blue-green recto commercially manufactured, based on original drawings made for the purpose by Roger Brown, Eleanor Dube, Philip Hanson and Christina Ramberg; for which the stencils were cut by Roger Brown and then transferred to screens for printing by the Chicago Decal Company; four separate sheets (one by each artist). No envelope was included with this set.



### Title: False Image Decals

**Date:** 1969

**Primary Maker:** Roger Brown

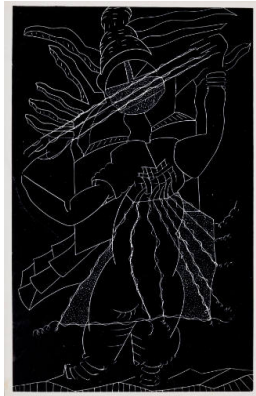
**Medium:** Color silkscreen decals (black, blue, red) on off-white paper with blue-green recto commercially manufactured, based on original drawings made for the purpose by the four artists, for which the stencils were cut by Roger Brown and then transferred to screens for printing by the Chicago Decal Company; four separate sheets (one by each artist) enclosed in a commercial white envelope with a window opening and printed text (black silkscreen) designed and executed by the artists

### Title: The False Image II

**Date:** 1969

**Primary Maker:** Eleanor Dube

**Medium:** Offset color lithograph commercially printed on coated wove paper, based on an original exquisite corpse drawing made for the purpose by the four artists

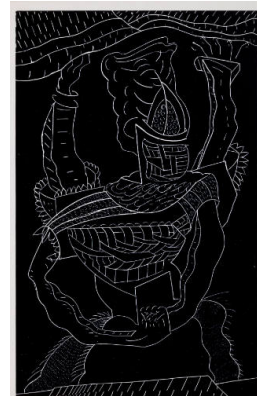


### Title: False Image Postcard

**Date:** 1968

**Primary Maker:** Eleanor Dube

**Medium:** Color offset photolithograph (black, blue) commercially printed recto and verso on thick off-white wove paper (some with a textured, coated surface on the recto), based on eight original drawings and handwritten verso text made to scale for the purpose by the four artists



### Title: False Image Postcard

**Date:** 1968

**Primary Maker:** Eleanor Dube

**Medium:** Color offset photolithograph (black, blue) commercially printed recto and verso on thick off-white wove paper (some with a textured, coated surface on the recto), based on eight original drawings and handwritten verso text made to scale for the purpose by the four artists

### Title: False Image Postcards

**Date:** 1968

**Primary Maker:** Roger Brown

**Medium:** Color offset photolithograph (black, blue) commercially printed recto and verso on thick off-white wove paper (some with a textured, coated surface on the recto), based on eight original drawings and handwritten verso text made to scale for the purpose by the four artists